

O.D.O.T. DISTRICT 2 SURVEY OFFICE (USE ONLY)

PERSONNEL

REFERENCE NO. 20

SHEET 22 OF 22

NOTES LOEHRKE

DATE 7/21/89

ROUTE US 23

H.C. HOFFMAN

WEATHER HAZY

COUNTY SENECA

R.C. BARNHISEL

TEMP. 80°

TOWNSHIP BIG SPRING

SECTION 6

DWG BY NASON

PID PT-SEN19

T 1 N R 13 E

TYPE MONUMENT SM. R.R. SPIKE

ON SURFACE - ~~BELOW~~ ON

OFFSET CL PAVEMENT ON LT : RT

- TO - EDGE PAVEMENT

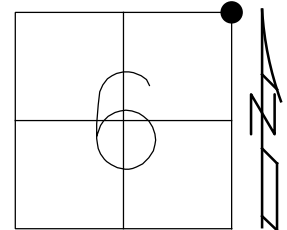
STATION: 343+86.67

HORIZ. DATUM: \_\_\_\_\_

GEOID: \_\_\_\_\_

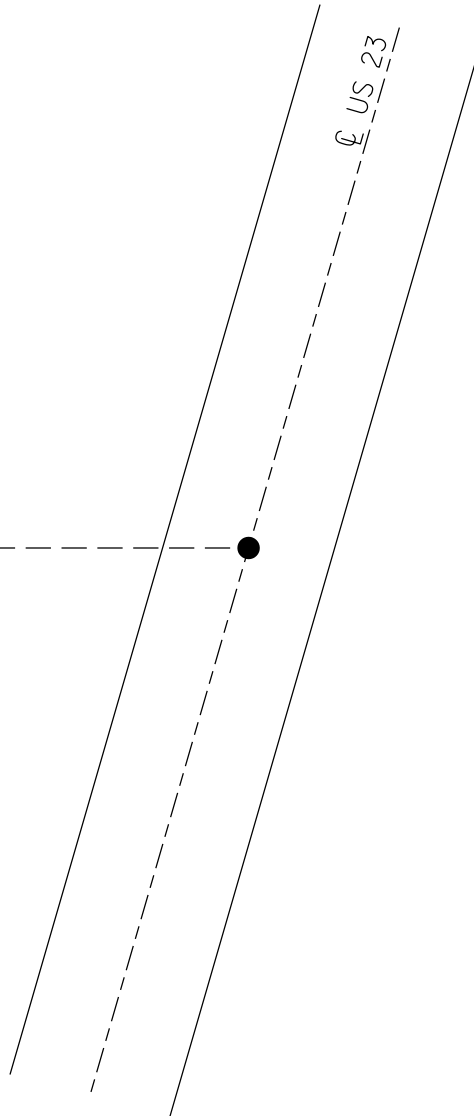
GRID: NORTHING: \_\_\_\_\_

EASTING: \_\_\_\_\_



RECORD: P.I.  
STA. 343+86.67  
 $\Delta = 2^\circ 24' \text{ LT}$   
FD SM.R.R.SPIKE  
7/21/89, CL  
SET P.K./WASHER  
11/02/89, SWH  
FD R.R.SPIKE  
9/01/09  
D.N.F.  
10/26/18, JMR  
4/15/19, JFO

-----  
LOUDEN TWP.  
BIG SPRING TWP.



O.D.O.T. DISTRICT 2 SURVEY OFFICE (USE ONLY)

PERSONNEL

REFERENCE NO. 20

SHEET 22 OF 22

NOTES LOEHRKE

DATE 7/21/89

ROUTE US 23

H.C. HOFFMAN

WEATHER HAZY

COUNTY SENECA

R.C. BARNHISEL

TEMP. 80°

TOWNSHIP BIG SPRING

SECTION 6

DWG BY NASON

PID PT-SEN19

T 1 N R 13 E

TYPE MONUMENT SM. R.R. SPIKE

ON SURFACE - ~~BELOW~~ ON

OFFSET CL PAVEMENT ON LT : RT

- TO - EDGE PAVEMENT

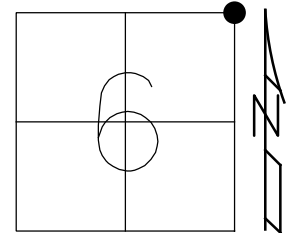
STATION: 343+86.67

HORZ. DATUM: \_\_\_\_\_

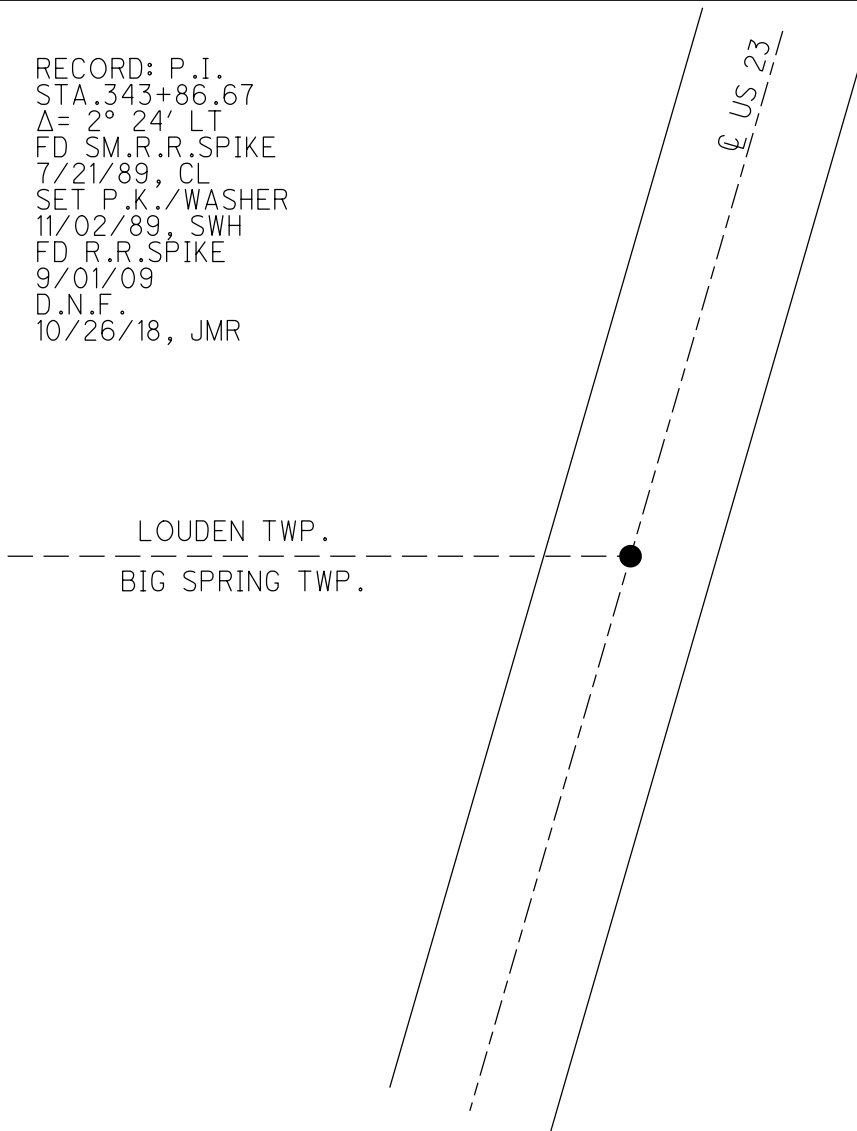
GEOID: \_\_\_\_\_

GRID: NORTHING: \_\_\_\_\_

EASTING: \_\_\_\_\_



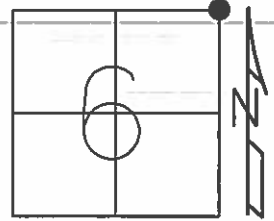
RECORD: P.I.  
STA. 343+86.67  
 $\Delta = 2^{\circ} 24' \text{ LT}$   
FD SM.R.R.SPIKE  
7/21/89, CL  
SET P.K./WASHER  
11/02/89, SWH  
FD R.R.SPIKE  
9/01/09  
D.N.F.  
10/26/18, JMR



O.D.O.T. DISTRICT 2 SURVEY OFFICE (USE ONLY)

PERSONNEL \_\_\_\_\_ REFERENCE NO. 20 SHEET 22 OF 22  
 NOTES LOHRKE DATE 07-21-89 ROUTE US 23  
 H.C. HOFFMAN WEATHER HAZY COUNTY SENECA  
 R.C. BARNHISEL TEMP. +80 TOWNSHIP BIG SPRING  
 \_\_\_\_\_ SECTION 6  
 \_\_\_\_\_ T 1 N R 13 E

TYPE MONUMENT SM. R.R. SPIKE  
 ON SURFACE - ~~BELOW~~ ON SURFACE  
~~LEFT~~ - Q PAV'T - ~~RIGHT~~ YES  
 \_\_\_\_\_ TO \_\_\_\_\_ EDGE PAVEMENT  
 S.L.M. 342+25  
 GRID: NORTHING: \_\_\_\_\_ EASTING: \_\_\_\_\_



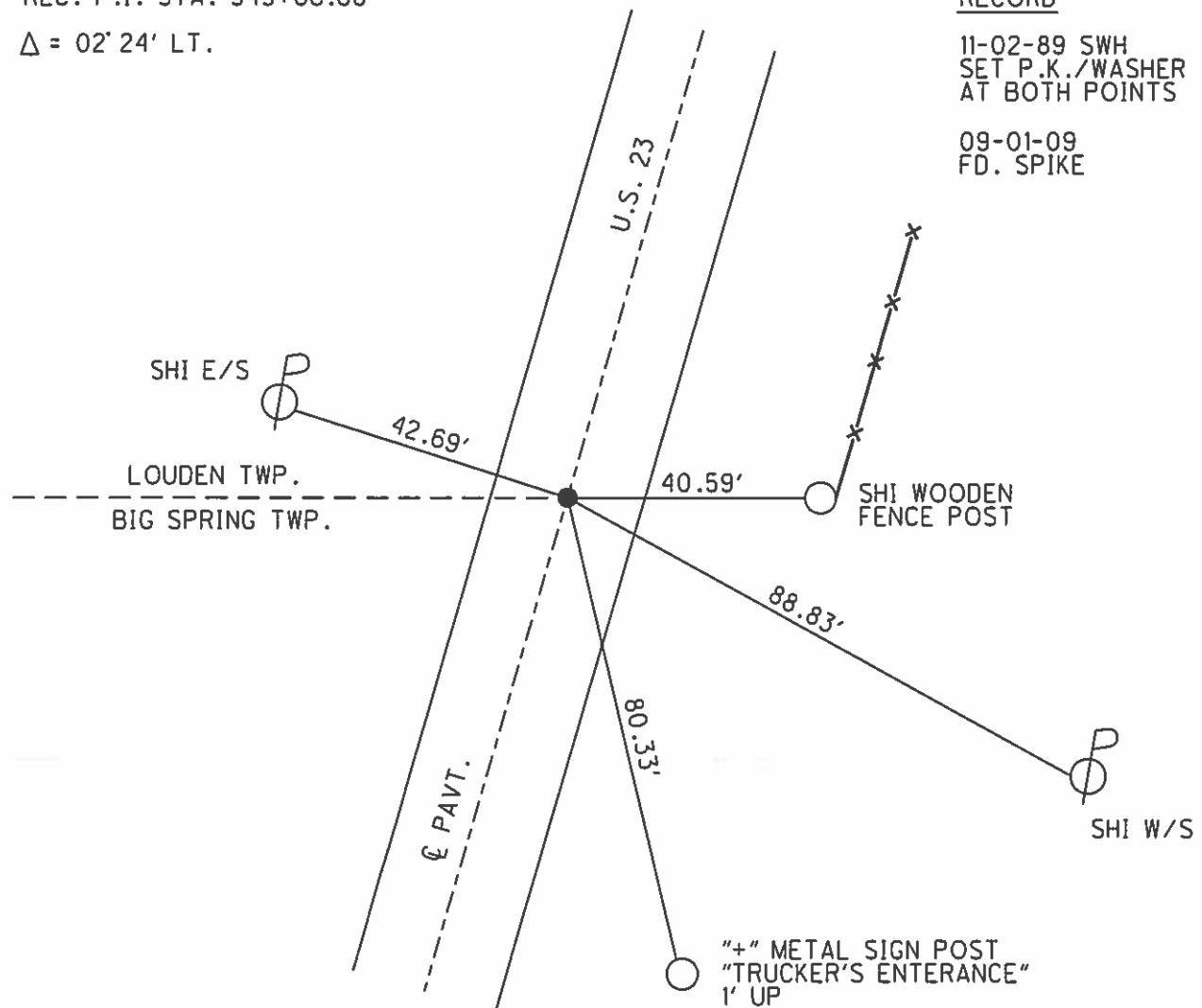
REC. P.I. STA. 343+86.68

$\Delta = 02' 24' LT.$

RECORD

11-02-89 SWH  
 SET P.K./WASHER  
 AT BOTH POINTS

09-01-09  
 FD. SPIKE



# O.D.O.T. DISTRICT 2 SURVEY OFFICE

PERSONNEL \_\_\_\_\_

REFERENCE NO. 20

SHEET \_\_\_\_\_ OF \_\_\_\_\_

NOTES LOEHRKE

H.C. Hoffman

R.C. BARNHISEL

DATE 7-21-89

WEATHER Hazy

TEMP. +80

ROUTE U.S. 23

COUNTY SENECA

TOWNSHIP BIG SPRING

SECTION 6

T \_\_\_\_\_ R \_\_\_\_\_

TYPE MONUMENT Sm. R.R. Spike

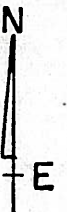
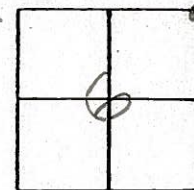
ON SURFACE - BELOW YES

LEFT - & PAV'T. - RIGHT YES

TO EDGE PAVEMENT

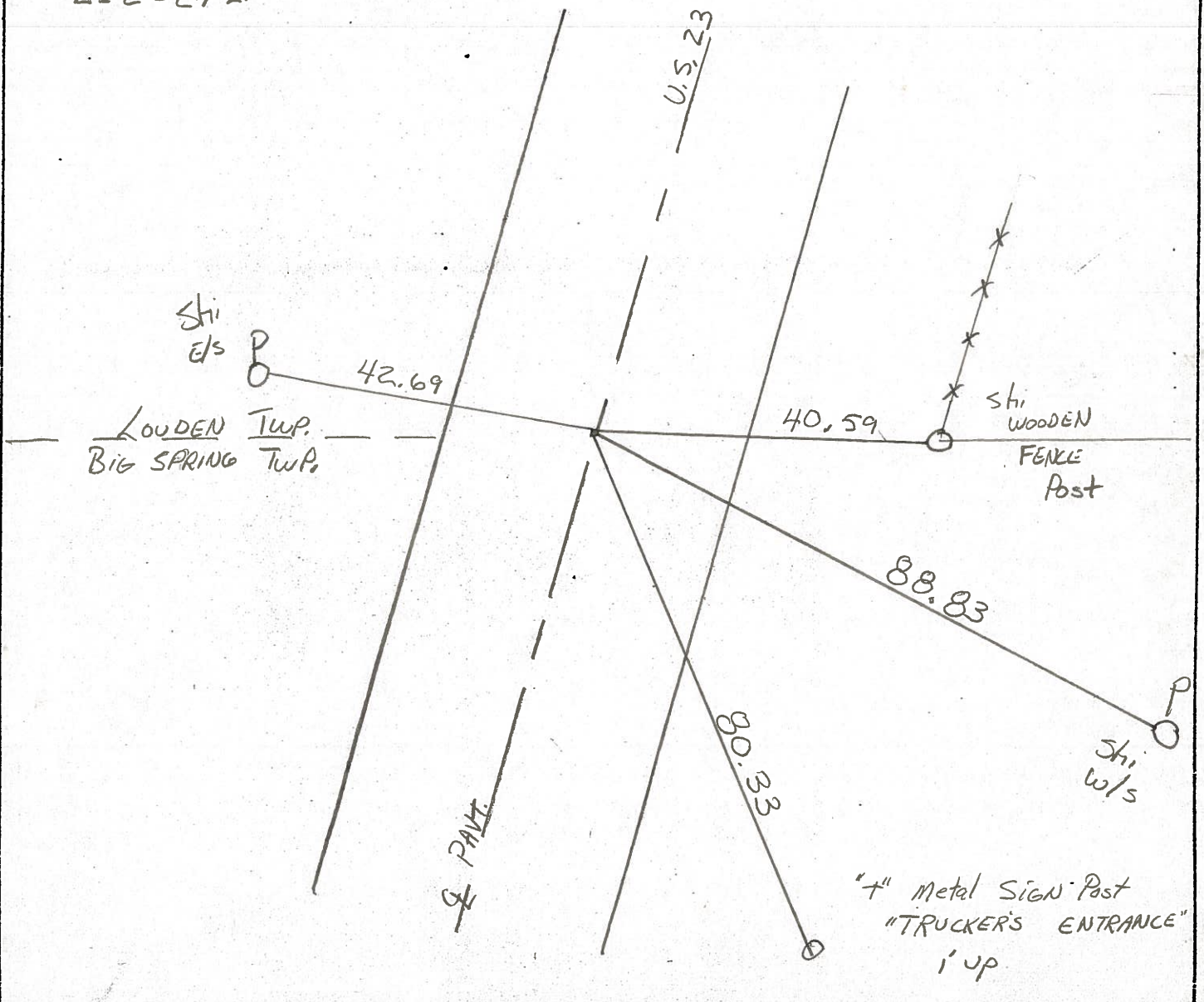
S.L.M. 342+25

Set Pk./WASHER  
11-2-89 SWH



Rec. P.I. Sta 343+86.68

$\Delta = 2^{\circ} - 24' \text{ Lt}$



County Seneca S.R. U.S. 23

Date 6-23-81

Township Big Spring/LouDon

Weather clear

Section 6 / 31

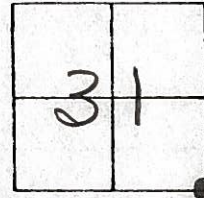
Temp. +70°

T N, R E

Personnel Hoffman

Householder

#20

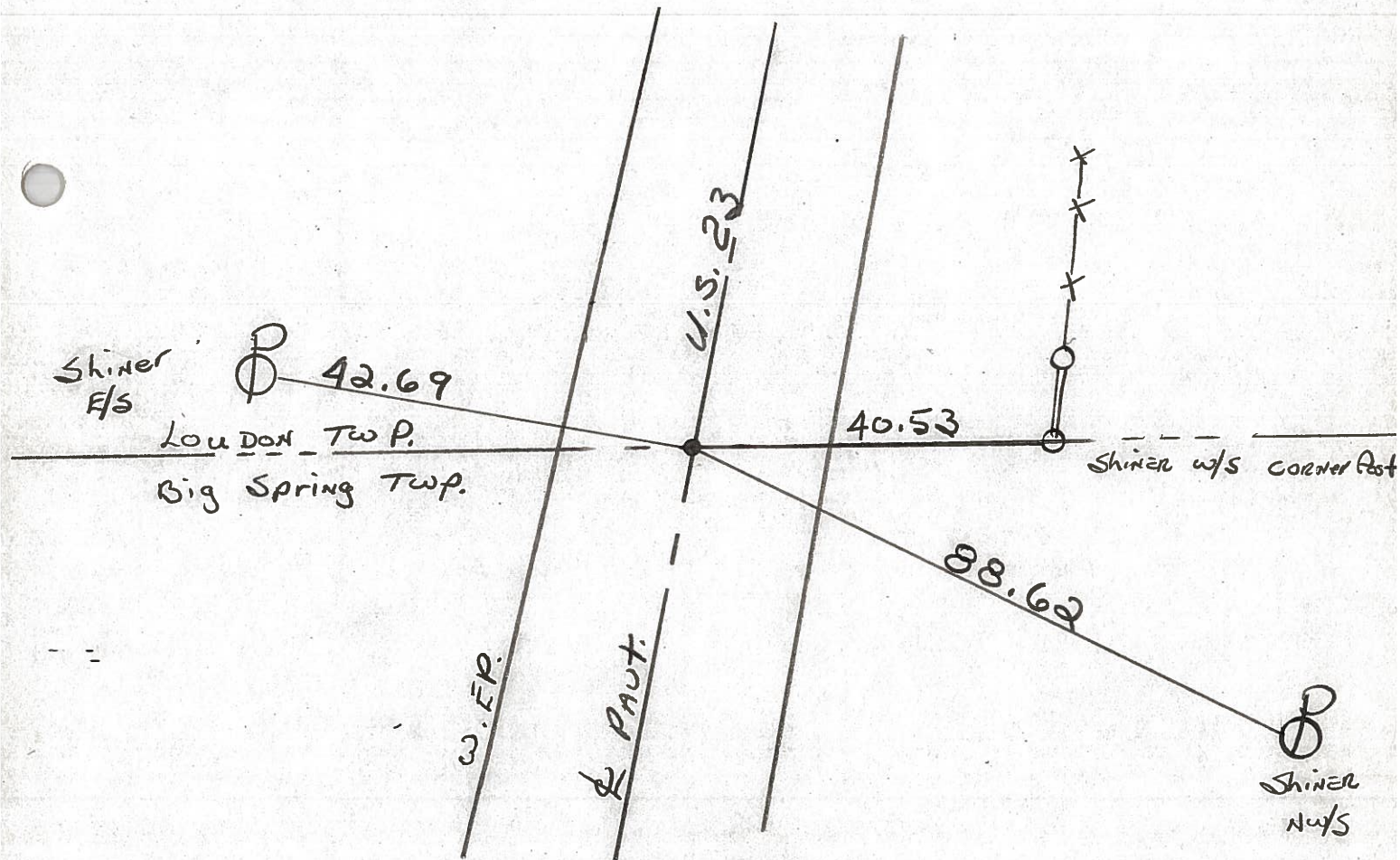


Sec. 6

Fd. Small R.R. Spk @ surface @ ctr. of paut.

PROJECT STA ± 342+51

SET SMALL R.R. SPK.  
9-30-81 SWH



P.I. STA. 343+86.68 - Δ = 2°-24' Lt. ~ REC.

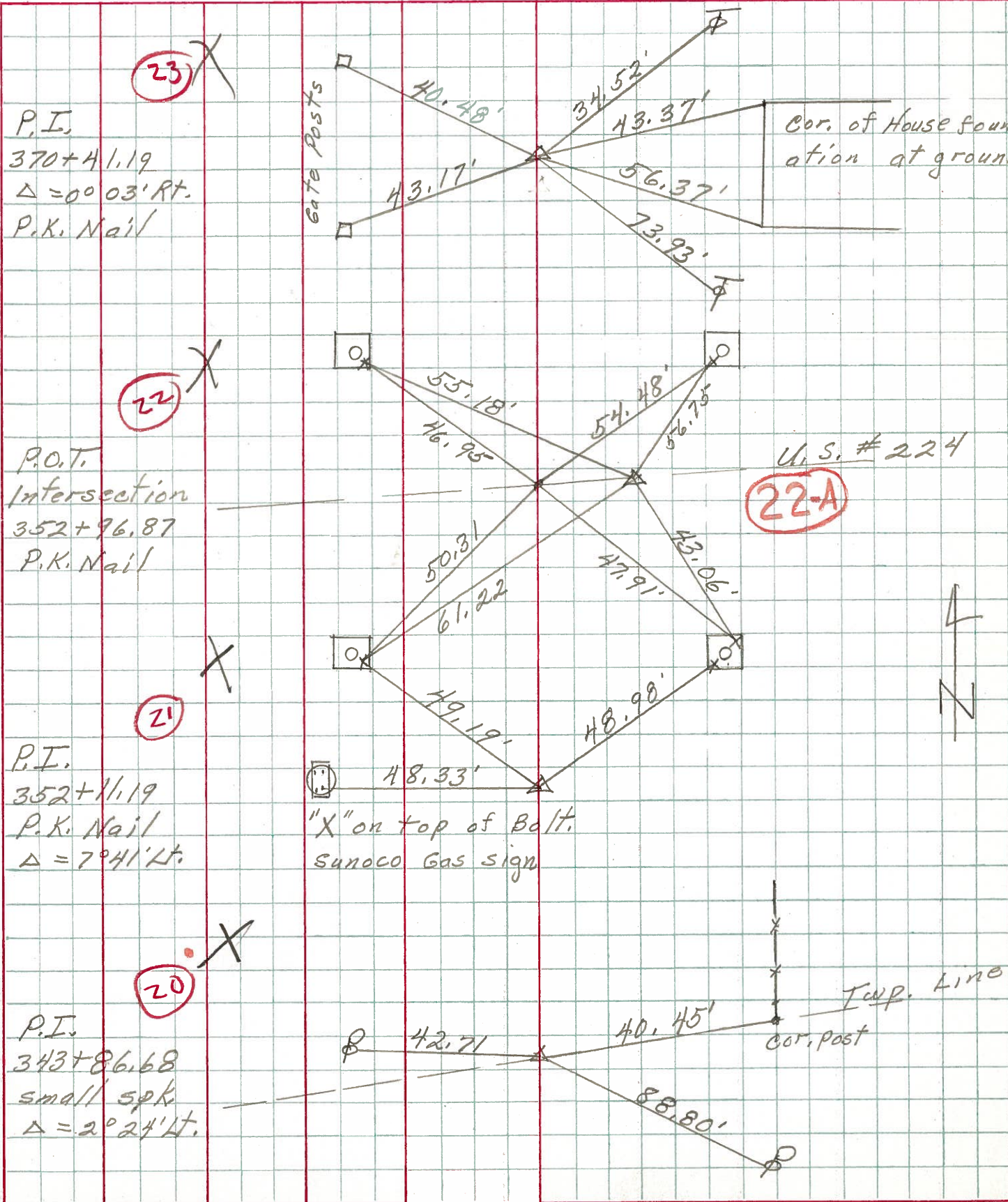
PERSONNEL TITLE PERSONNEL TITLE  
Schneider

COUNTY Seneca DATE 3-13-73

S. R. U.S. # 23 WEATHER Cloudy

SEC. Lat. U.S. 224 & 23 TEMP. 45°

DESCRIPTION Ties LEFT CENTER LINE RIGHT JOB NO.



PERSONNEL TITLE PERSONNEL TITLE

COUNTY Seneca

DATE 3-13-73

S. R. 23

WEATHER cloudy

SEC. Net. U.S. 224 & 23

TEMP. 50°

DESCRIPTION

Ties

JOB NO.

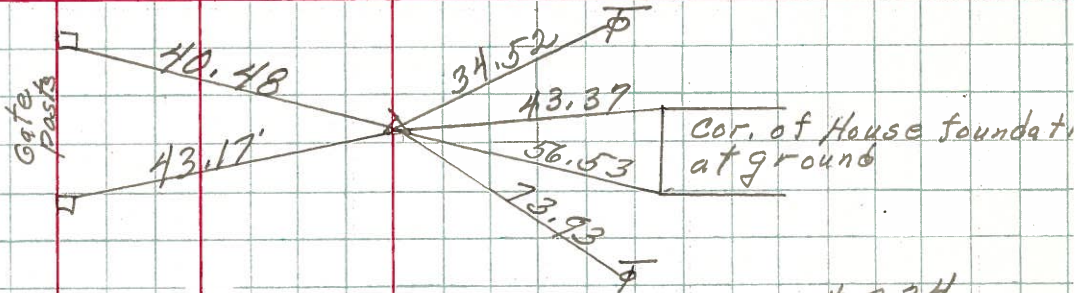
LEFT

CENTER LINE

RIGHT

23

P.I.  
370+41.49  
 $\Delta = 0^{\circ} 03' \text{ Rt.}$   
P.K. Nail

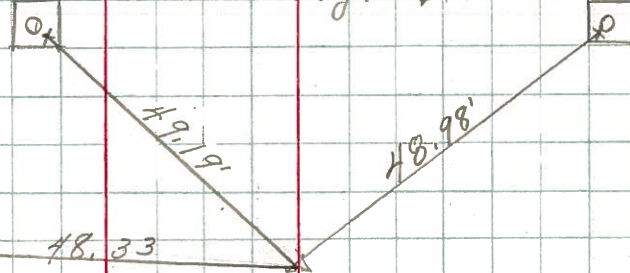


U.S. # 224

See U.S. # 224 notes for ties

8321

"X" on Traffic Light bases



21

P.I.  
352+11.19  
P.K. Nail  
 $\Delta = 7^{\circ} 41' \text{ Lt.}$

"X" on Tap bolt Sunoco Gas sign

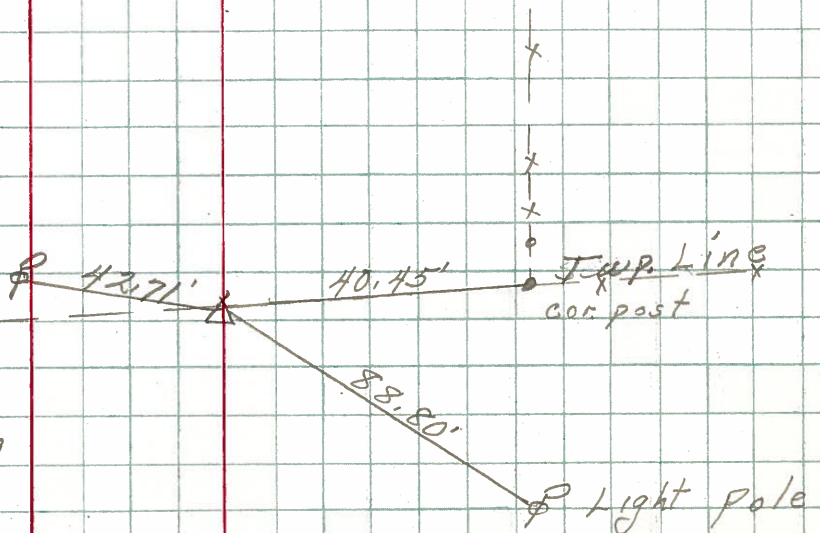


8320



20

P.I.  
343+86.68  
small spk.  
 $\Delta = 2^{\circ} 24' \text{ Lt.}$



8319

PERSONNEL	TITLE	PERSONNEL	TITLE	COUNTY	<u>Seneca</u>	DATE	<u>8-27-69</u>
<u>Schneider</u>				S. R.	<u>U.S. 23</u>	WEATHER	<u>Fair</u>
<u>Mosser</u>				SEC.		TEMP.	<u>70°</u>
<u>Barbour</u>				DESCRIPTION	<u>Ties for Control Points</u>		JOB NO.
<u>Potts</u>							

