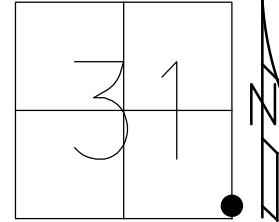


O.D.O.T. DISTRICT 2 SURVEY OFFICE (USE ONLY)

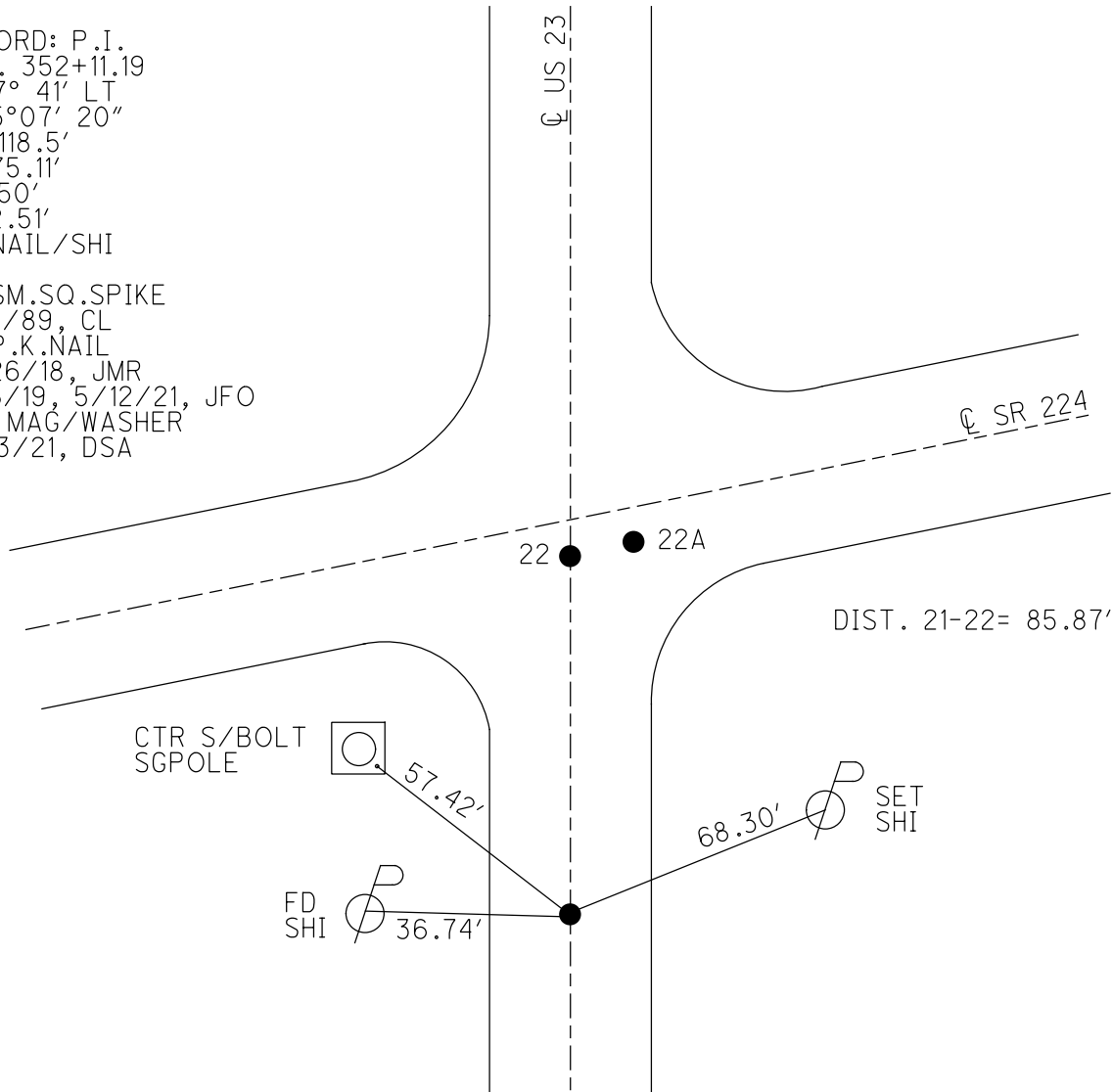
PERSONNEL _____ REFERENCE NO. 21 SHEET 1 OF 17
 NOTES O'DONNELL DATE 5/12/21 ROUTE US 23
 H.C. AUBLE WEATHER SUNNY COUNTY SENECA
 R.C. NIESE TEMP. 43° TOWNSHIP LOUDON
 DWG BY RHOADES PID 85264 SECTION 31
 T 2 N R 13 E

TYPE MONUMENT P.K.NAIL
 ON SURFACE - ~~BELOW~~ ON _____
 OFFSET CL PAVEMENT ON _____ LT : RT
12.2' TO RT EDGE PAVEMENT
 STATION: 352+11.19



HORIZ.DATUM: NAD83 2011 GEOID: 2012A
 GRID: NORTHING: 516831.242 EASTING: 1720073.291

RECORD: P.I.
 STA. 352+11.19
 $\Delta = 7^\circ 41' \text{ LT}$
 $D = 5^\circ 07' 20''$
 $R = 1118.5'$
 $T = 75.11'$
 $L = 150'$
 $E = 2.51'$
 FD NAIL/SHI
 1955
 FD SM.SQ.SPIKE
 7/21/89, CL
 FD P.K.NAIL
 10/26/18, JMR
 8/16/19, 5/12/21, JFO
 SET MAG/WASHER
 12/13/21, DSA



O.D.O.T. DISTRICT 2 SURVEY OFFICE (USE ONLY)

PERSONNEL

REFERENCE NO. 21

SHEET 1 OF 12

NOTES LEOHRKE

DATE 7/21/89

ROUTE US 23

H.C. HOFFMAN

WEATHER HAZY

COUNTY SENECA

R.C. BARNHISEL

TEMP. 80°

TOWNSHIP LOUDON

SECTION 31

DWG BY RHOADES PID PT-SEN19

T 2 N R 13 E

TYPE MONUMENT SM.R.R.SPIKE

ON SURFACE - ~~BELOW~~ ON

OFFSET CL PAVEMENT ON LT : RT

12.2' TO RT EDGE PAVEMENT

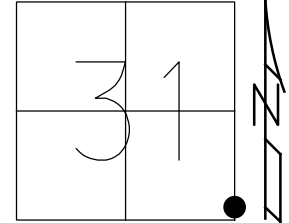
STATION: 352+11.19

HORZ.DATUM: NAD83 2011

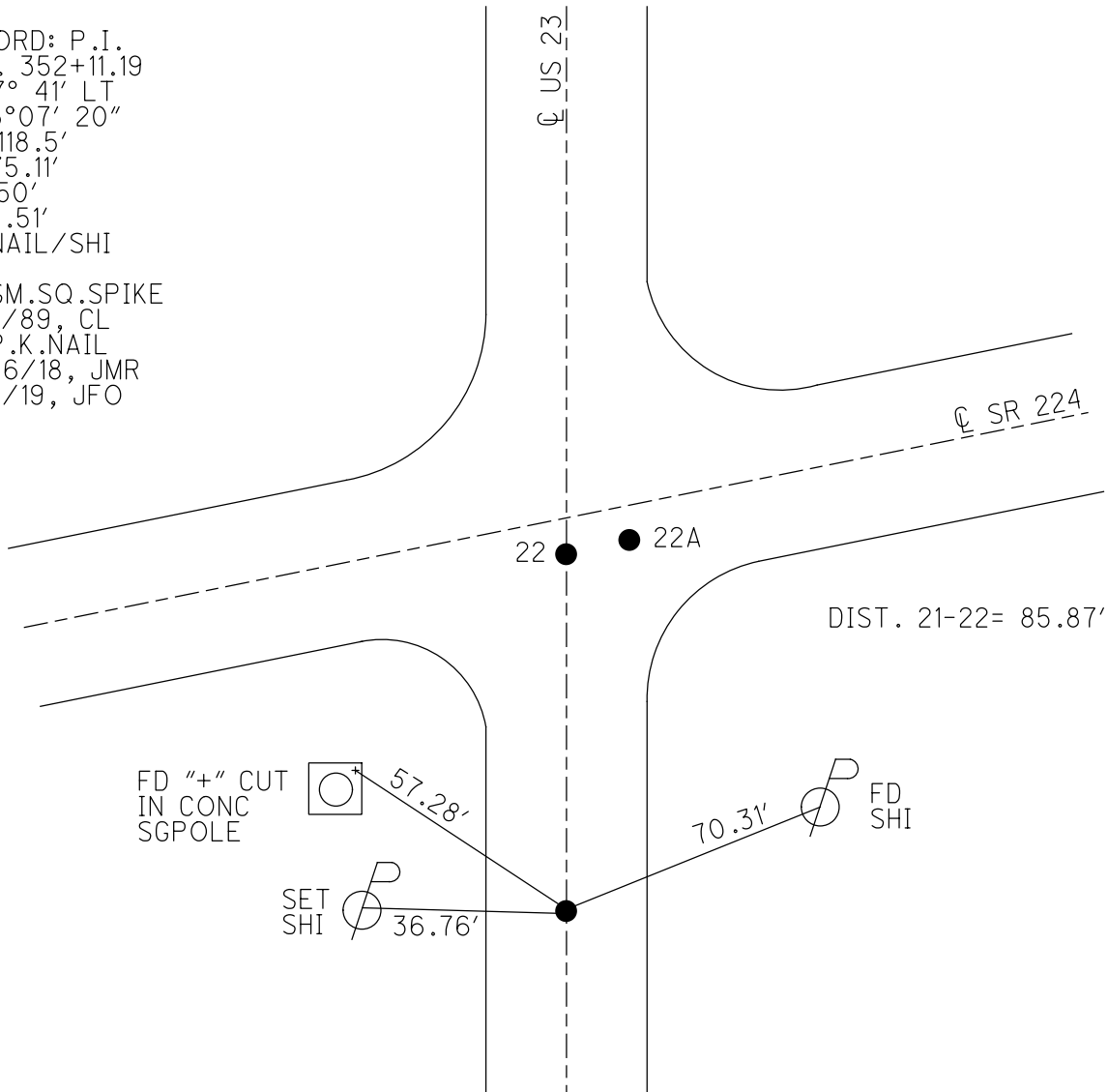
GEOID: 2012A

GRID: NORTHING: 516831.242

EASTING: 1720073.291



RECORD: P.I.
 STA. 352+11.19
 $\Delta = 7^\circ 41' \text{ LT}$
 $D = 5^\circ 07' 20''$
 $R = 1118.5'$
 $T = 75.11'$
 $L = 150'$
 $E = 2.51'$
 FD NAIL/SHI
 1955
 FD SM.SQ.SPIKE
 7/21/89, CL
 FD P.K.NAIL
 10/26/18, JMR
 8/16/19, JFO



O.D.O.T. DISTRICT 2 SURVEY OFFICE

PERSONNEL _____

REFERENCE NO. 21 & 22 SHEET _____ OF _____

NOTES LOCHRE

H.C. Hoffman

R.C. BARNHISEL

DATE 7-21-89

WEATHER HAZY

TEMP. +80

ROUTE U.S. 23

COUNTY SENECA

TOWNSHIP LOUPON

SECTION 31

T _____ R _____

TYPE MONUMENT A Sm RR Spike

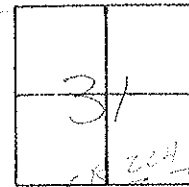
ON SURFACE - BELOW Yes

LEFT - C PAV'T. - RIGHT _____

122 TO RT EDGE PAVEMENT _____

S.L.M. 350 +52

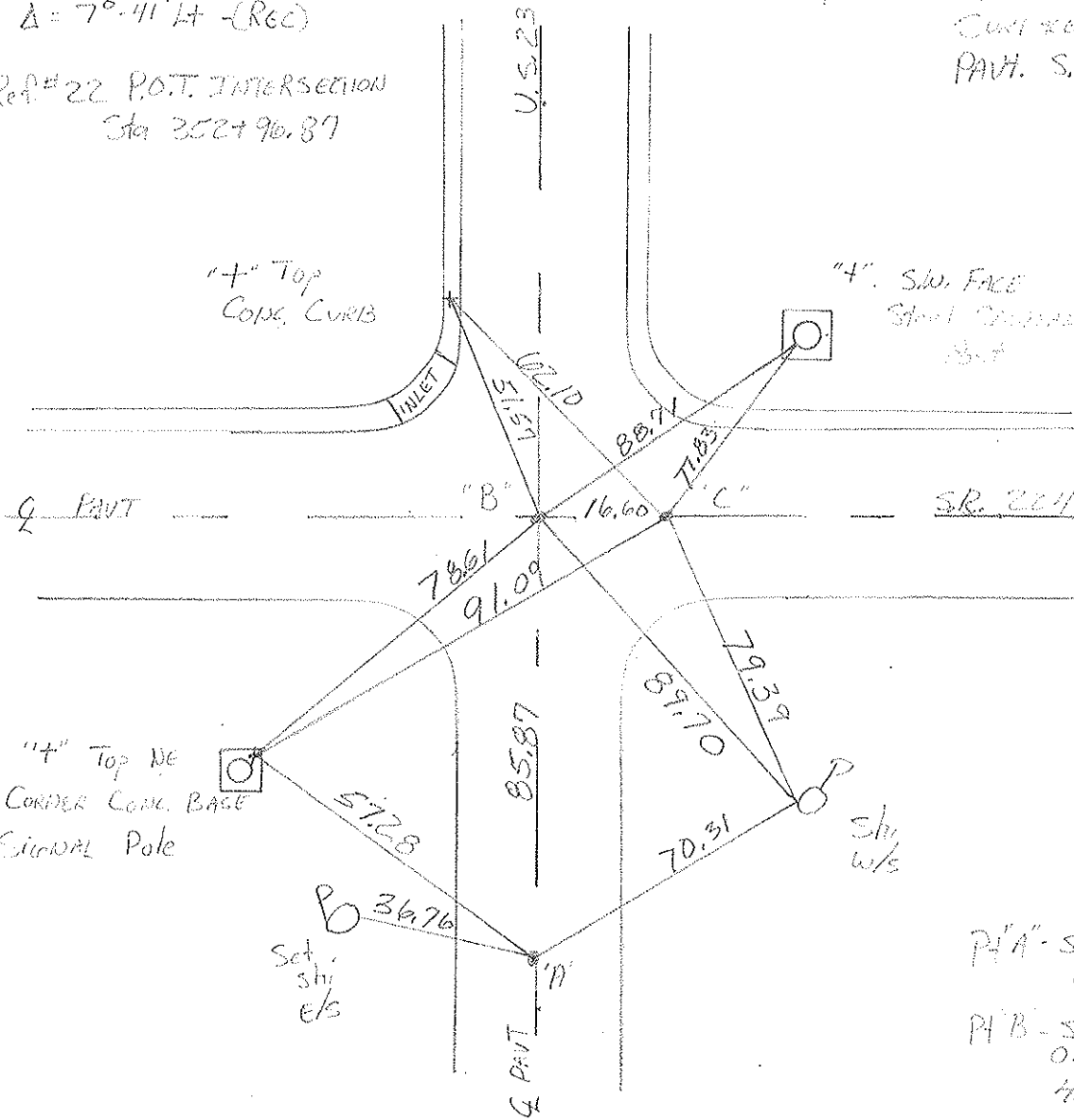
Set PK/washer
AT ALL THREE
POINTS
11-2-89 and



Pt. A Ref #21 P.I. Sta 3527 11.19
 $\Delta = 7^{\circ} 41' 14''$ (RCC)

PA'C" Fd P1 on
Curve of
PAV'T. SR, 224

Pt. B Ref #22 P.O.T. INTERSECTION
Sta 3527 90.87



"4" Top NE
CORNER CONC. BASE
SIGNAL Pole

PA'A - Sm. RR spike
ON Q 23
PA'B - Sm. "I" spike
ON Q 23
H.S.C. & PAV'T
114
PA'C - Sm. "I" spike
S.B.C. & PAV'T

County Seneca S.R. 45.23 & 224

Date 6-23-81

Township Lou Don

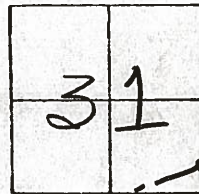
Weather clear

Section 31

Temp. +75°

T N, R E

Personnel Hoffman
Householder



21

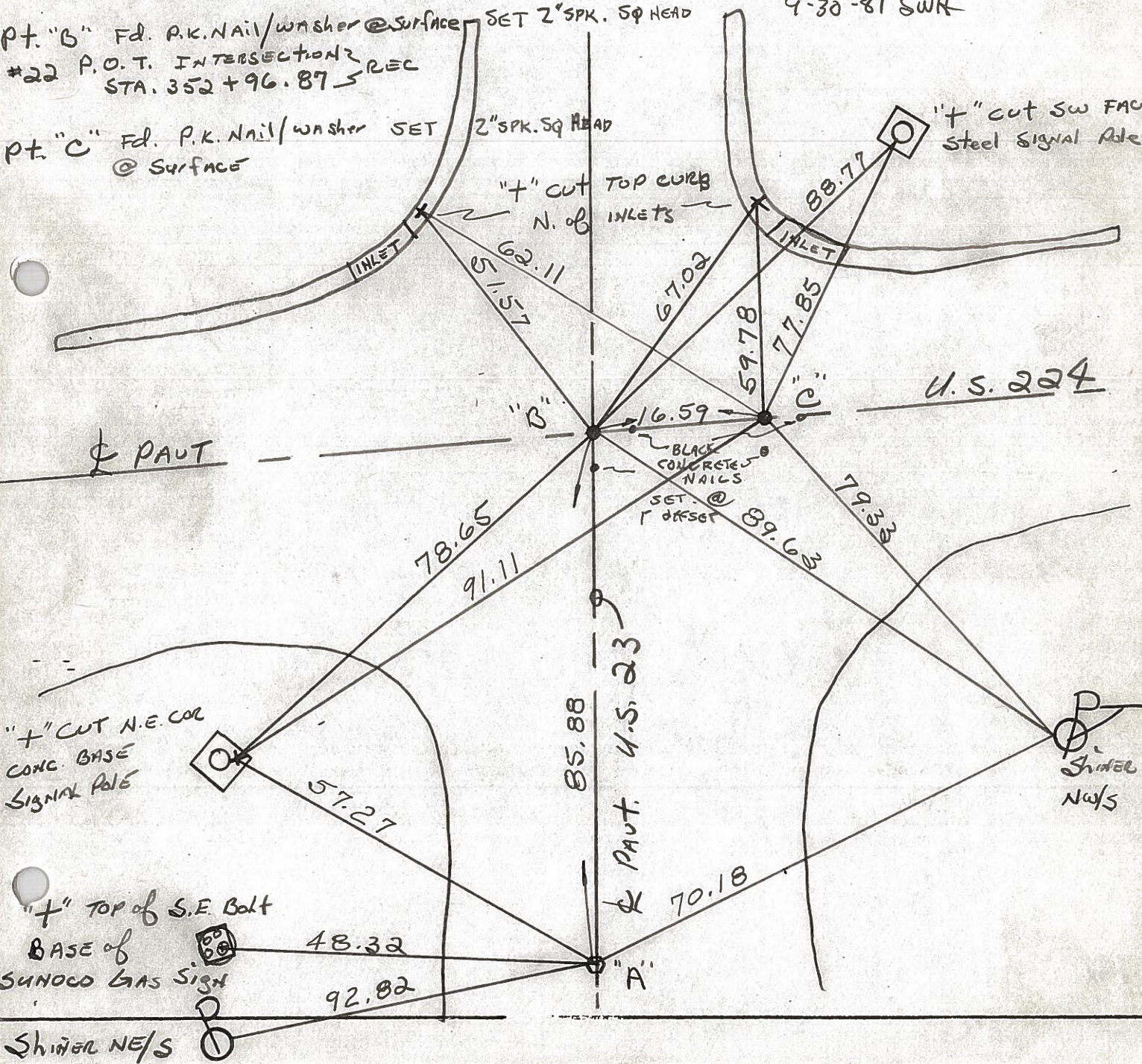
22

Pt. "A" Fd. small R.R. SPK 2" Below Surface @ ctre of PAUT., Project STA.
#21 P.I. STA. 352+11.19 - Δ=70' 41" Lt. - REC. SET SMALL R.R.SP.K. ± 350+80
9-30-81 SWH

Pt. "B" Fd. P.K. Nail/washer @ Surface SET 2" SPK. SQ HEAD

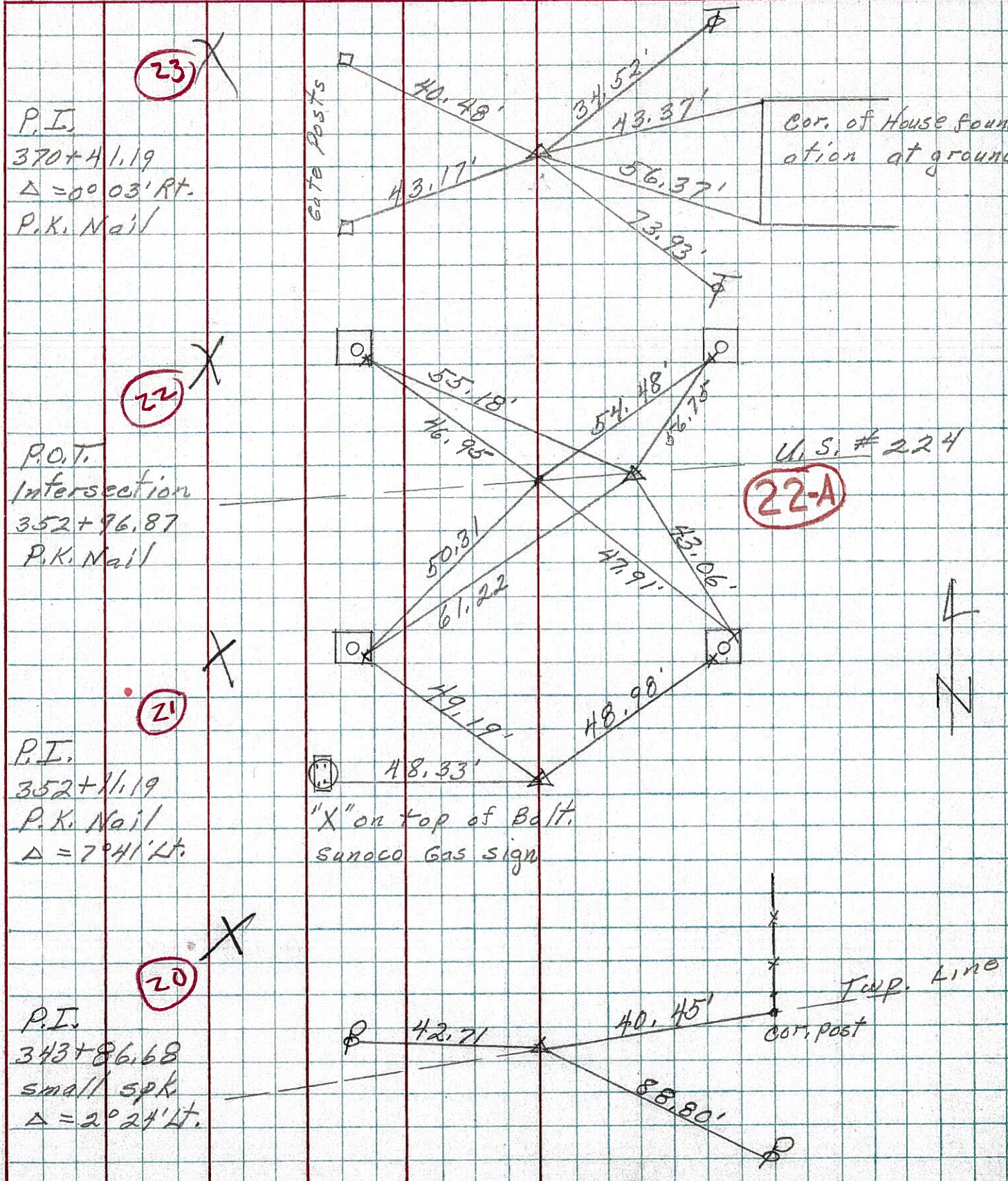
#22 P.O.T. INTERSECTION REC
STA. 352+96.87

Pt. "C" Fd. P.K. Nail/washer SET 2" SPK. SQ HEAD
@ Surface



PERSONNEL TITLE PERSONNEL TITLE COUNTY Seneca DATE 3-13-73
Schneider _____ S. R. U.S. # 23 WEATHER Cloudy
 _____ _____ SEC. Lat. U.S. 224 & 23 TEMP. 45°

DESCRIPTION Ties LEFT CENTER LINE RIGHT JOB NO. _____



PERSONNEL TITLE PERSONNEL TITLE

COUNTY Seneca

DATE 3-13-73

S. R. 23

WEATHER cloudy

SEC. Det. U.S. 224 & 23

TEMP. 50°

DESCRIPTION

Ties

JOB NO.

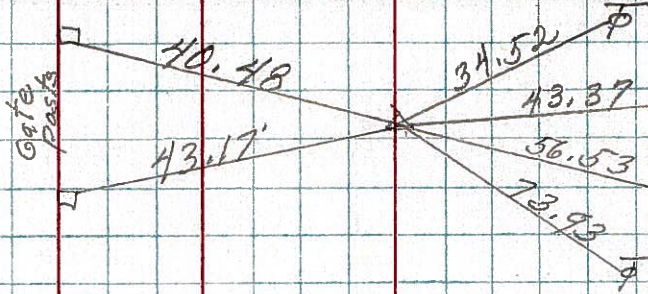
LEFT

CENTER LINE

RIGHT

23

P.I.
370+41.49
 $\Delta = 0^{\circ}03' \text{ Rt.}$
P.K. Nail



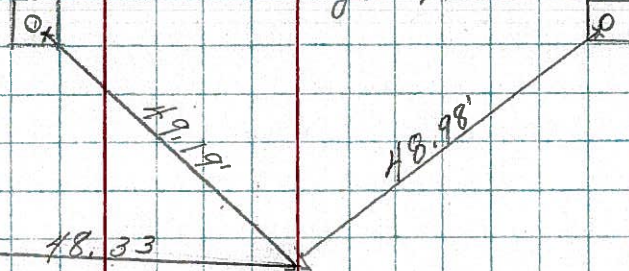
Cor. of House foundation at ground

U.S. # 224

See U.S. # 224 notes for ties

8321

"X" on Traffic Light bases



"X" on Tap bolt Sunoco Gas sign

8320

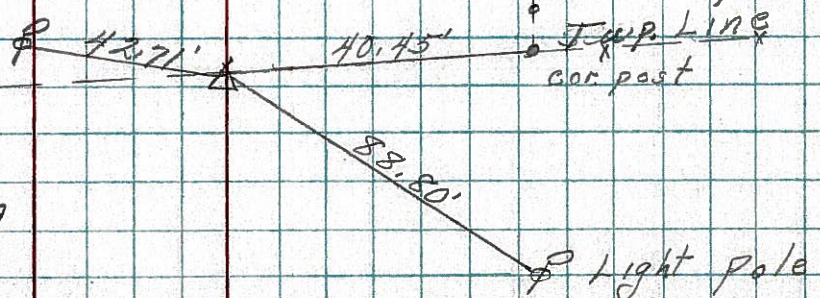


21

P.I.
352+10.19
P.K. Nail
 $\Delta = 7^{\circ}41' \text{ Lt.}$

20

P.I.
343+86.68
Small SPK.
 $\Delta = 2^{\circ}24' \text{ Lt.}$



Equip. Line car post

Light Pole

8319

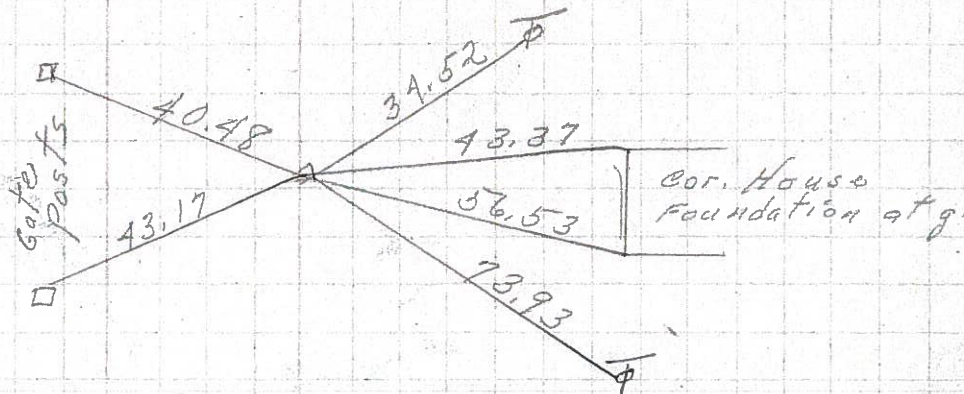
PERSONNEL	TITLE	PERSONNEL	TITLE
Schneider			
Mosser			
Barbour			
Potts			

COUNTY Seneca DATE 8-27-69
 S. R. U.S. 23 WEATHER Fair
 SEC. _____ TEMP. 70°

DESCRIPTION Ties for Control Points JOB NO. _____
 LEFT CENTER LINE RIGHT

(23) X

P.I.
 370 + 41.49
 $\Delta = 0^{\circ}03' RT.$
 P.K. Nail



(22) X did not find

(21) X did not find

(20) X did not find

U.S. 224 East

See Page 5-A FOR TIES

(19) X

P.I.
 330 + 27.51
 P.K. Nail

