

O.D.O.T. DISTRICT 2 SURVEY OFFICE (USE ONLY)

PERSONNEL

REFERENCE NO. 22

SHEET 2 OF 17

NOTES O'DONNELL

DATE 5/12/21

ROUTE US 23

H.C. AUBLE

WEATHER SUNNY

COUNTY SENECA

R.C. NIESE

TEMP. 43°

TOWNSHIP LOUDON

SECTION 31

DWG BY RHOADES

PID 85264

T 2 N R 13 E

TYPE MONUMENT MAG/WASHER

ON SURFACE - ~~BELOW~~ ON

OFFSET  $\odot$  PAVEMENT ON LT : RT

- TO - EDGE PAVEMENT 4.5' S OF US 224

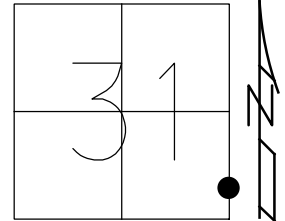
STATION: 352+96.87

HORZ.DATUM: NAD83 2011

GEOID: 2012A

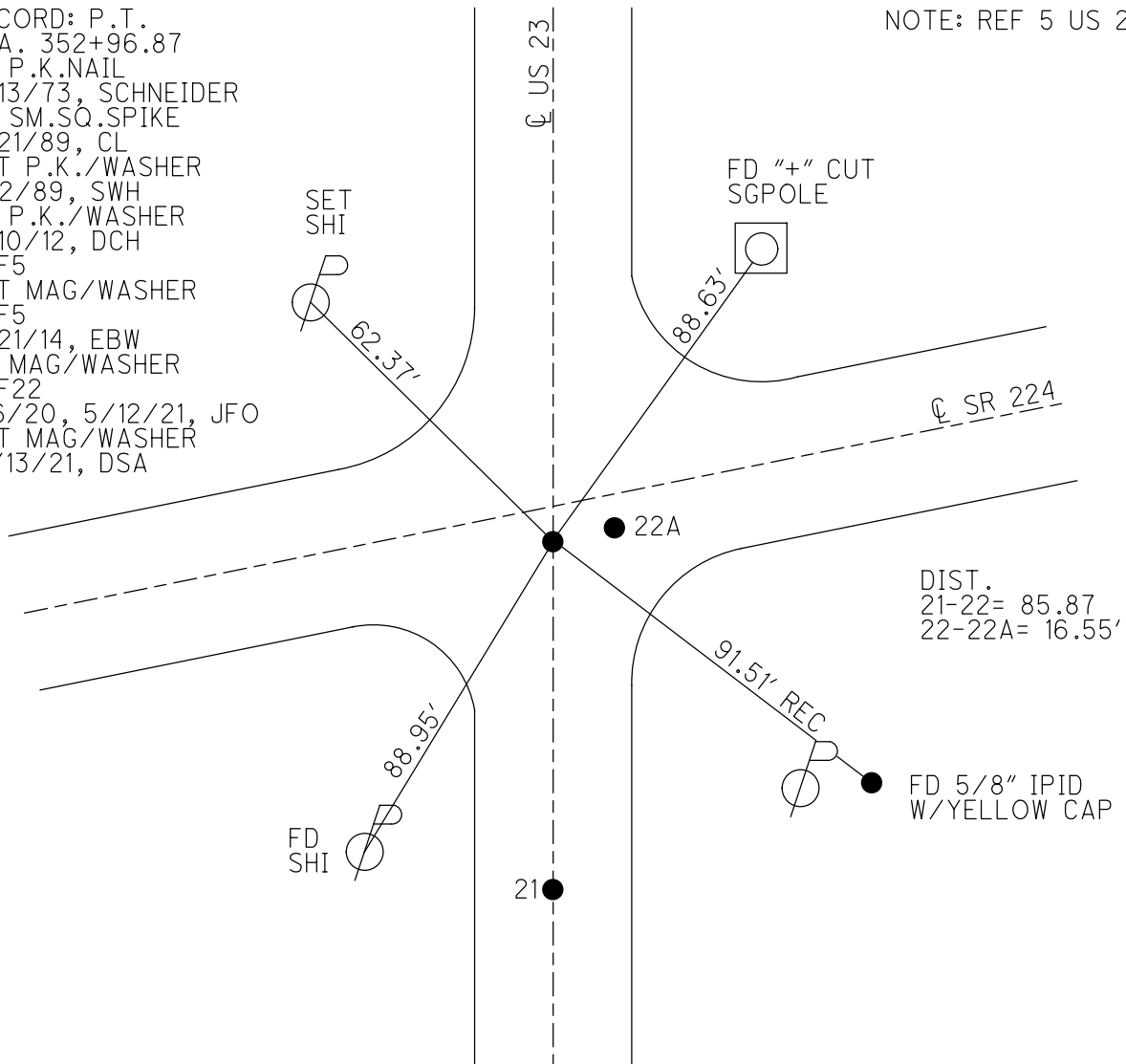
GRID: NORTHING: 516917.104

EASTING: 1720073.295



RECORD: P.T.  
 STA. 352+96.87  
 FD P.K.NAIL  
 3/13/73, SCHNEIDER  
 FD SM.SQ.SPIKE  
 7/21/89, CL  
 SET P.K./WASHER  
 11/2/89, SWH  
 FD P.K./WASHER  
 2/10/12, DCH  
 REF5  
 SET MAG/WASHER  
 REF5  
 5/21/14, EBW  
 FD MAG/WASHER  
 REF22  
 1/6/20, 5/12/21, JFO  
 SET MAG/WASHER  
 12/13/21, DSA

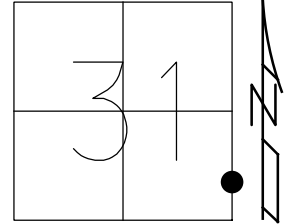
NOTE: REF 5 US 224



O.D.O.T. DISTRICT 2 SURVEY OFFICE (USE ONLY)

PERSONNEL \_\_\_\_\_ REFERENCE NO. 22 SHEET 2 OF 12  
 NOTES RHOADES DATE 6/11/13 ROUTE US 23  
 H.C. ROUSOS WEATHER CLOUDY COUNTY SENECA  
 R.C. WESTFALL TEMP. 66° TOWNSHIP LOUDON  
 \_\_\_\_\_ SECTION 31  
 \_\_\_\_\_ T 2 N R 13 E

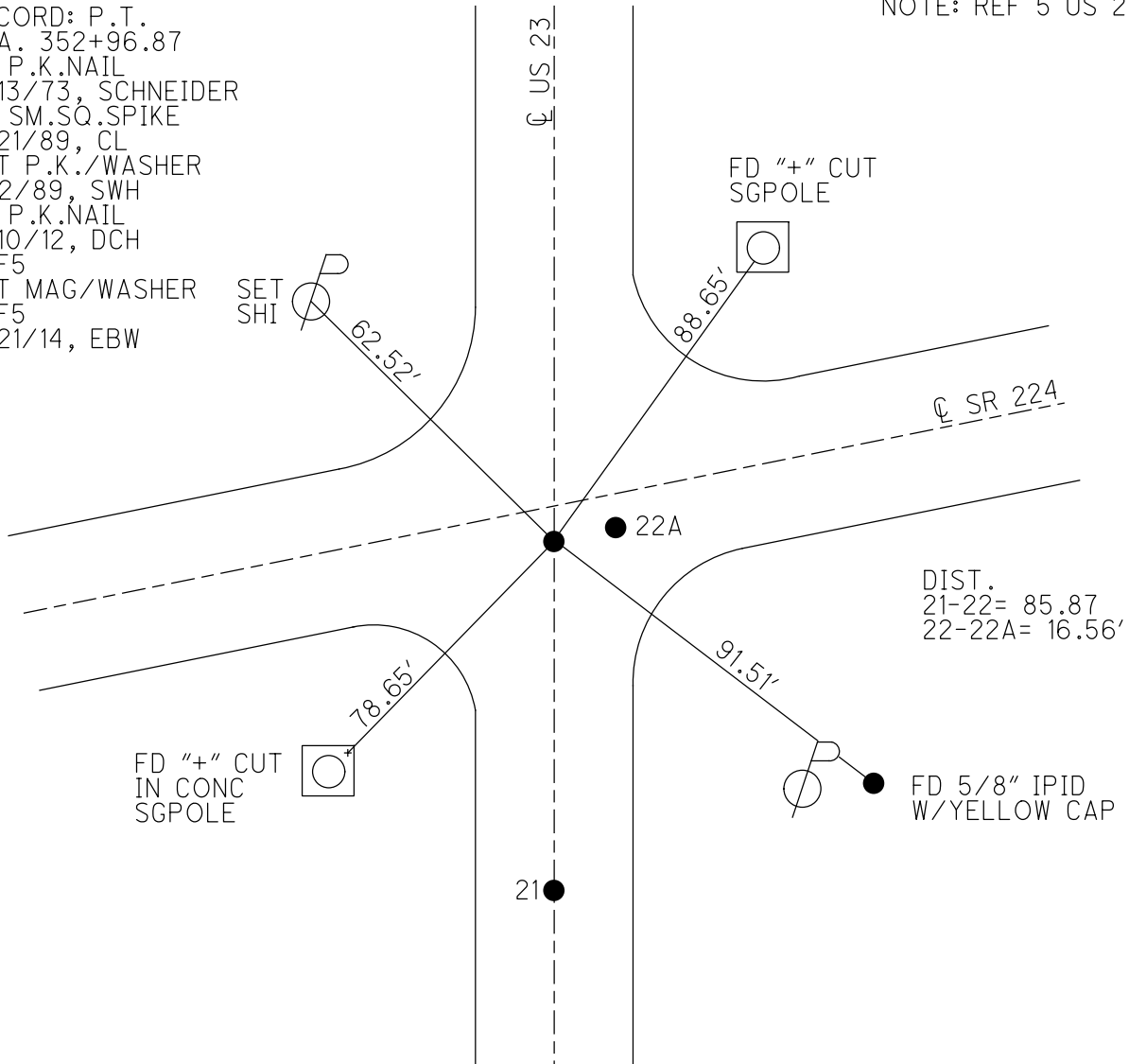
TYPE MONUMENT P.K./WASHER  
 ON SURFACE - ~~BELOW~~ ON \_\_\_\_\_  
~~LEFT~~ - CL PAV'T - RIGHT 4.5'  
 \_\_\_\_\_ TO \_\_\_\_\_ EDGE PAVEMENT  
 S.L.M. 352+96.87



Grid: Northing: 516917.099 Easting: 1720073.291

RECORD: P.T.  
 STA. 352+96.87  
 FD P.K.NAIL  
 3/13/73, SCHNEIDER  
 FD SM.SQ.SPIKE  
 7/21/89, CL  
 SET P.K./WASHER  
 11/2/89, SWH  
 FD P.K.NAIL  
 2/10/12, DCH  
 REF5  
 SET MAG/WASHER  
 REF5  
 5/21/14, EBW

NOTE: REF 5 US 224



# O.D.O.T. DISTRICT 2 SURVEY OFFICE

PERSONNEL \_\_\_\_\_

REFERENCE NO. 21 & 22 SHEET \_\_\_\_\_ OF \_\_\_\_\_

NOTES LOCHRE

H.C. Hoffman

R.C. BARNHISEL

DATE 7-21-89

WEATHER HAZY

TEMP. +80

ROUTE U.S. 23

COUNTY SENECA

TOWNSHIP LOUPDON

SECTION 31

T \_\_\_\_\_ R \_\_\_\_\_

TYPE MONUMENT A Sm RR Spike

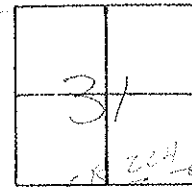
ON SURFACE - BELOW Yes

LEFT - C. PAV'T. - RIGHT \_\_\_\_\_

122 TO RT EDGE PAVEMENT \_\_\_\_\_

S.L.M. 350 +52

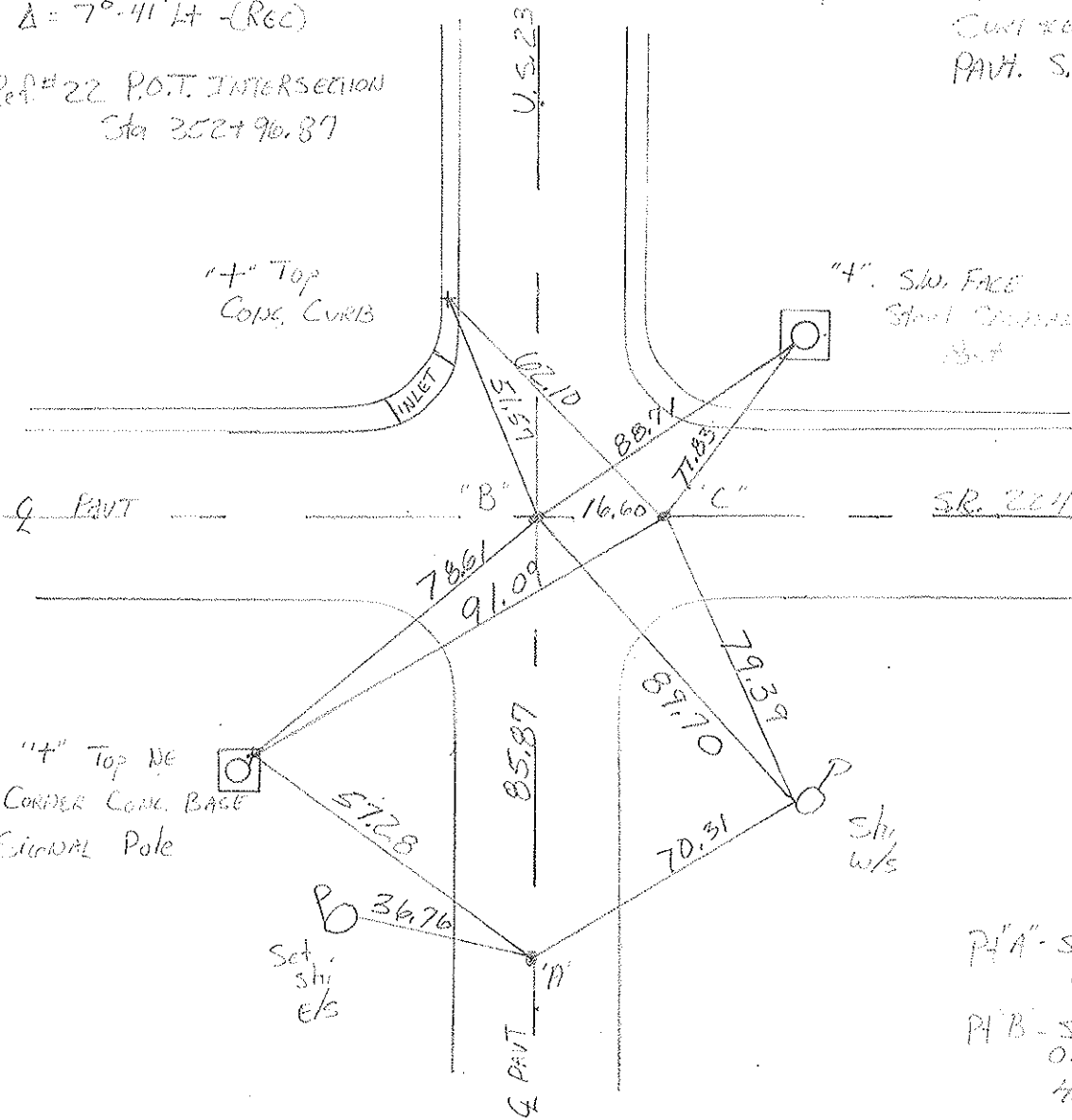
Set PK/washer  
AT ALL THREE  
POINTS  
11-2-89 and



Pt. A Ref #21 P.I. Sta 3527 11.19  
 $\Delta = 7^{\circ} 41' 14''$  (RCC)

PA'C" Fd P1 on  
Curve of  
PAV'T. SR, 224

Pt. B Ref #22 P.O.T. INTERSECTION  
Sta 3527 90.87



"4" Top NE  
CORNER CONC. BASE  
SIGNAL Pole

Set  
shj  
etc

PA'A - Sm. RR spike  
ON Q 23  
PA'B - Sm. "I" spike  
ON Q 23  
H.S.C. & PAV'  
114  
PA'C - Sm. "I" spike  
S.B.C. & PAV'

County Seneca S.R. 115.23 § 224

Date 6-23-81

Township Lou Don

Weather clear

Section 31

Temp. +75°

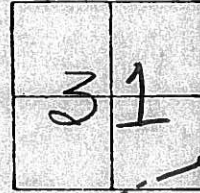
T N, R E

Personnel Hoffman

Householder

# 21

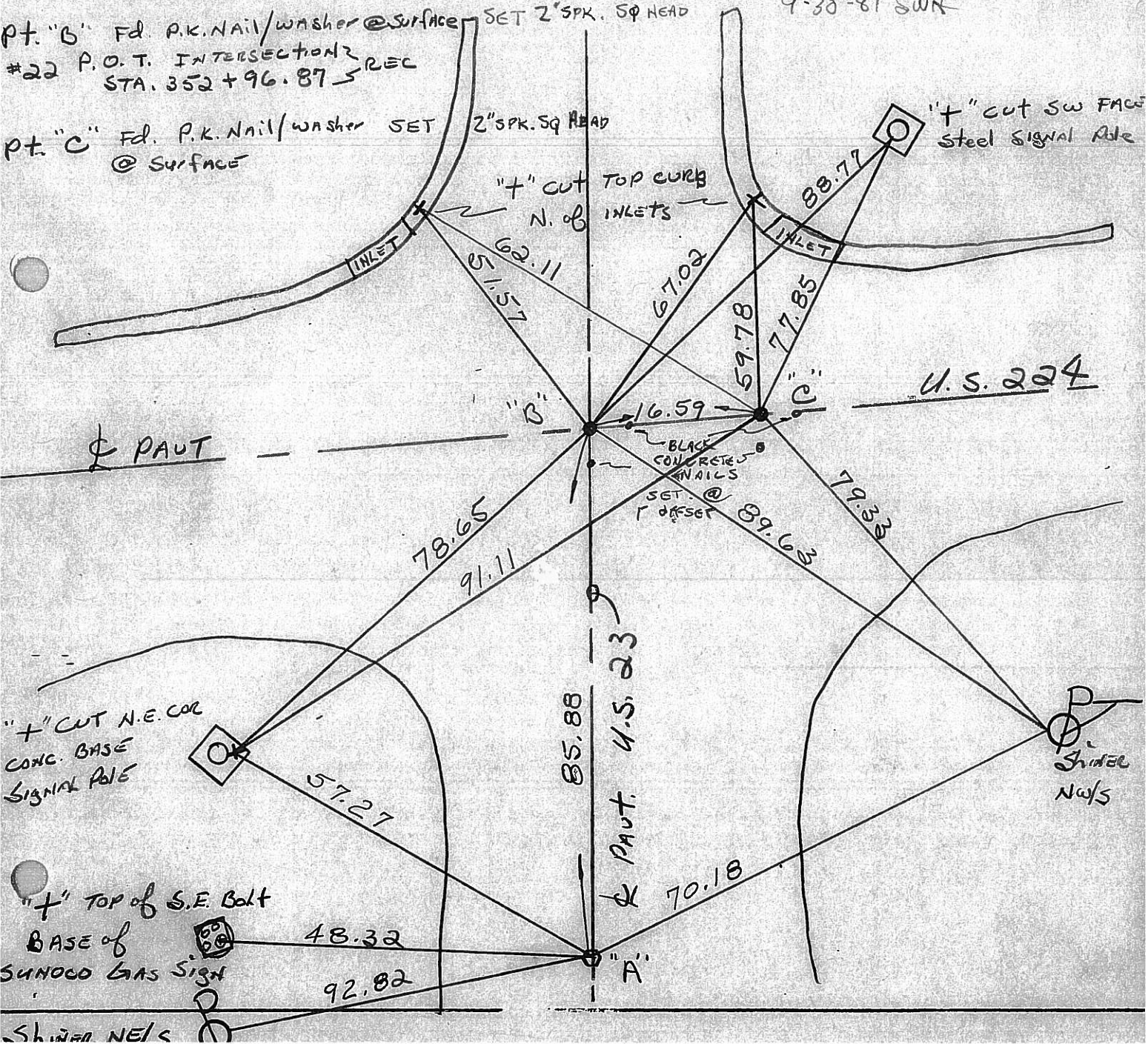
# 22



pt. "A" Fd. small R.R. SPK 2" Below Surface @ CTR of PAUT., Project STA.  
 #21 P.I. STA. 352+11.19 - Δ=70° 41' Lt. - REC. SET SMALL R.R. SPK ±350+80  
 9-30-81 SWK

pt. "B" Fd. P.K. Nail/washer @ Surface SET 2" SPK. SQ HEAD  
 #22 P.O.T. INTERSECTION REC  
 STA. 352+96.87

pt. "C" Fd. P.K. Nail/washer SET 2" SPK. SQ HEAD  
 @ Surface



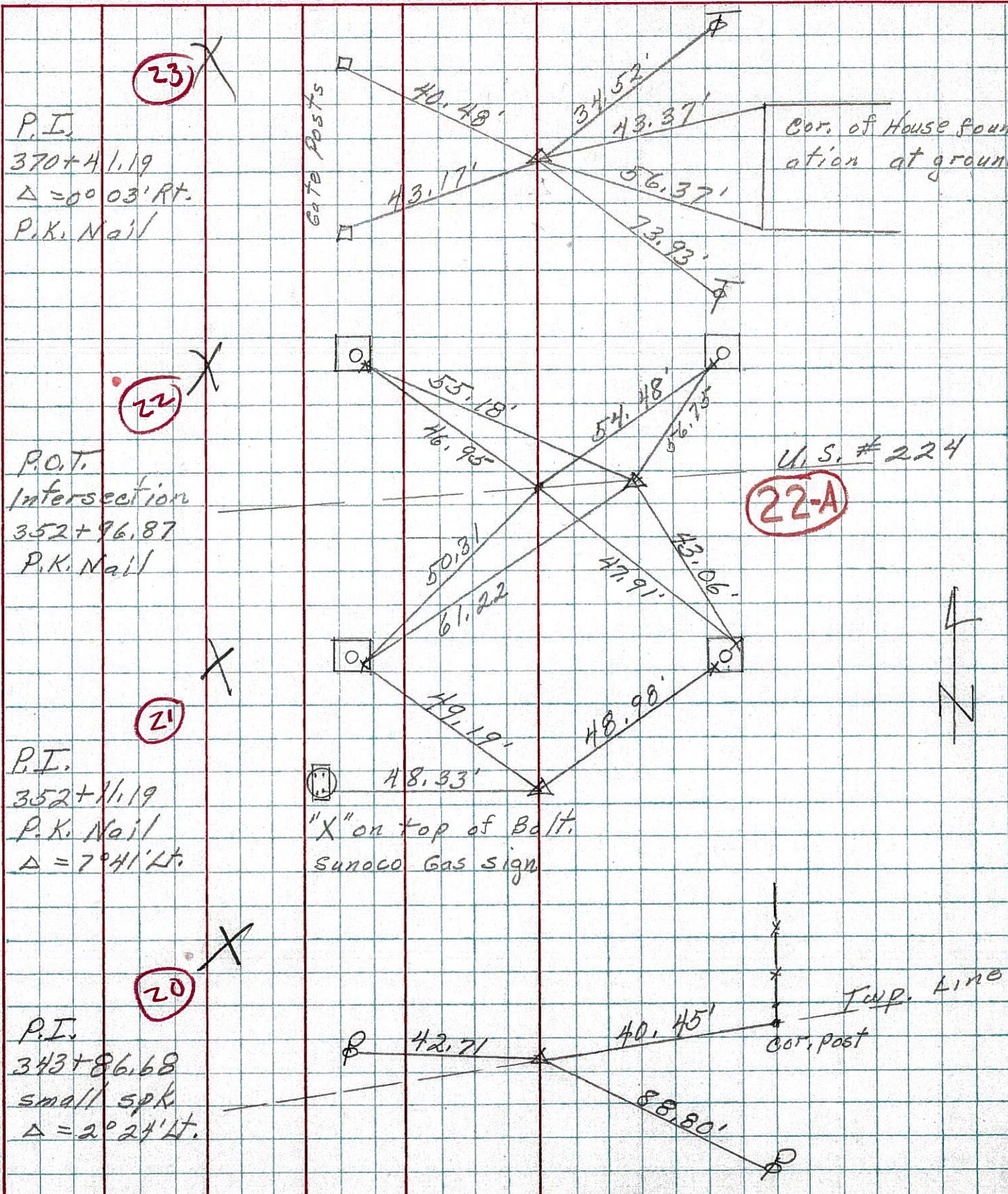
PERSONNEL TITLE PERSONNEL TITLE  
Schneider \_\_\_\_\_

COUNTY Seneca DATE 3-13-73

S. R. U.S. # 23 WEATHER Cloudy

SEC. Jct. U.S. 224 & 23 TEMP. 45°

DESCRIPTION Ties LEFT CENTER LINE RIGHT JOB NO.



P.I.  
 370+41.19  
 $\Delta = 00^{\circ} 03' \text{ Rt.}$   
 P.K. Nail

P.O.T.  
 Intersection  
 352+96.87  
 P.K. Nail

P.I.  
 352+11.19  
 P.K. Nail  
 $\Delta = 7^{\circ} 41' \text{ Lt.}$

P.I.  
 343+86.68  
 small spk  
 $\Delta = 2^{\circ} 24' \text{ Lt.}$

Cor. of House foundation at ground

U.S. # 224  
**22-A**

"X" on top of Bolt.  
 Sunoco Gas sign

Twp. Line  
 Cor. post

PERSONNEL	TITLE	PERSONNEL	TITLE	COUNTY	<u>Seneca</u>	DATE	<u>8-27-69</u>
<u>Schneider</u>				S. R.	<u>U.S. 23</u>	WEATHER	<u>Fair</u>
<u>Mosser</u>				SEC.		TEMP.	<u>70°</u>
<u>Barbour</u>							
<u>Potts</u>							

DESCRIPTION Ties for Control Points      JOB NO. \_\_\_\_\_

