

O.D.O.T. DISTRICT 2 SURVEY OFFICE (USE ONLY)

PERSONNEL

REFERENCE NO. 22 A

SHEET 1 OF 17

NOTES O'DONNELL

DATE 5/12/21

ROUTE US 23

H.C. AUBLE

WEATHER SUNNY

COUNTY SENECA

R.C. NIESE

TEMP. 43°

TOWNSHIP LOUDON

SECTION 31

DWG BY RHOADES

PID 85264

T 2 N R 13 E

TYPE MONUMENT MAG/WASHER

ON SURFACE - ~~BELOW~~ ON

OFFSET \odot PAVEMENT 16.5' ~~LT~~ : RT

- TO - EDGE PAVEMENT

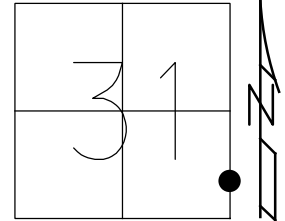
STATION: 352+96.87

HORZ.DATUM: NAD83 2011

GEOID: 2012A

GRID: NORTHING: 516918.349

EASTING: 1720089.797



RECORD: US 224 P.I.

$\Delta = 5^{\circ} 05' RT$

FD SM.R.R.SPIKE

11/26/63, EK

FD SM.SQ.SPIKE

7/21/89, CL

SET P.K./WASHER

11/2/89, SWH

FD P.K.SHANK

2/10/12, DCH

REF6

SET MAG/WASHER

REFA5

5/21/14, EBW

FD MAG/WASHER

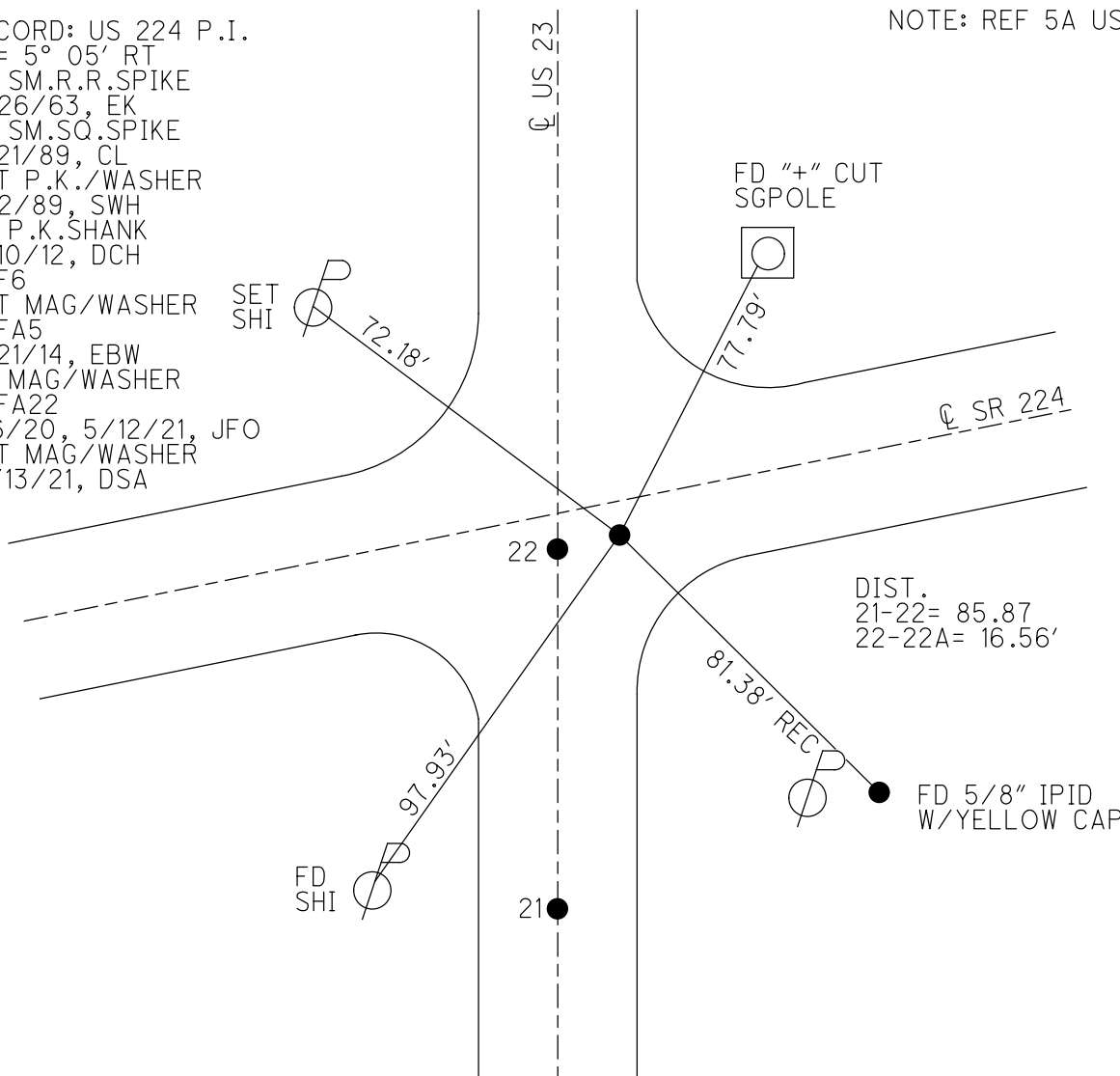
REFA22

1/6/20, 5/12/21, JFO

SET MAG/WASHER

12/13/21, DSA

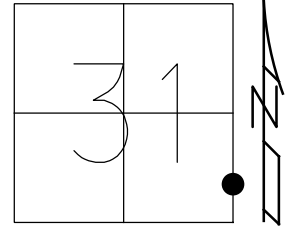
NOTE: REF 5A US 224



O.D.O.T. DISTRICT 2 SURVEY OFFICE (USE ONLY)

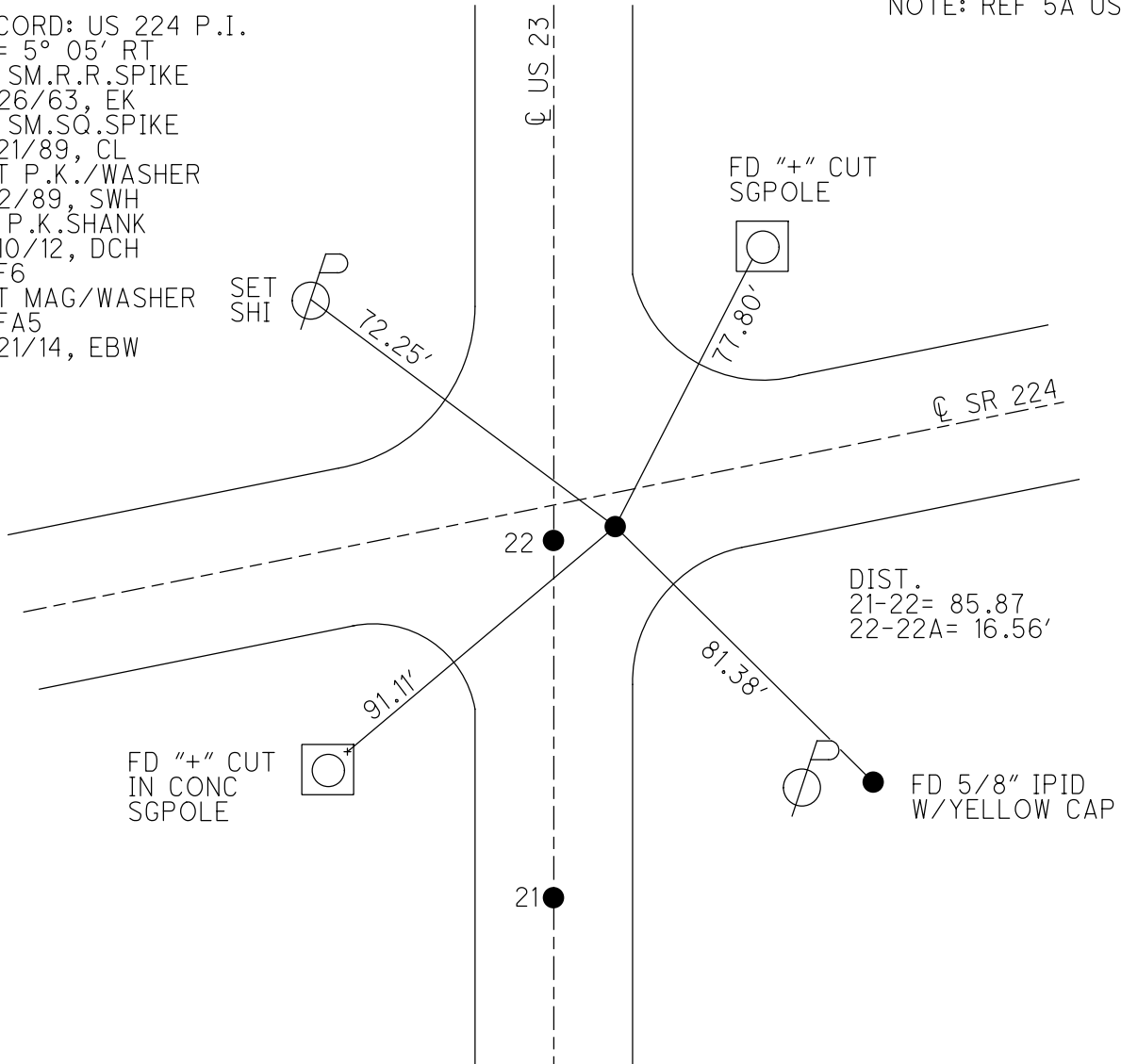
PERSONNEL _____ REFERENCE NO. 22 A SHEET 3 OF 12
 NOTES RHOADES DATE 6/11/13 ROUTE US 23
 H.C. ROUSOS WEATHER CLOUDY COUNTY SENECA
 R.C. WESTFALL TEMP. 66° TOWNSHIP LOUDON
 _____ SECTION 31
 _____ T 2 N R 13 E

TYPE MONUMENT P.K.SHANK
 ON SURFACE - ~~BELOW~~ ON _____
~~LEFT~~ - CL PAV'T - RIGHT 4.5'
 _____ TO _____ EDGE PAVEMENT
 S.L.M. 352+96.87
 Grid: Northing: 516918.324 Easting: 1720089.817



RECORD: US 224 P.I.
 $\Delta = 5^\circ 05' RT$
 FD SM.R.R.SPIKE
 11/26/63, EK
 FD SM.SQ.SPIKE
 7/21/89, CL
 SET P.K./WASHER
 11/2/89, SWH
 FD P.K.SHANK
 2/10/12, DCH
 REF6
 SET MAG/WASHER SET
 REFA5 SHI
 5/21/14, EBW

NOTE: REF 5A US 224



O.D.O.T. DISTRICT 2 SURVEY OFFICE

PERSONNEL _____

REFERENCE NO. 21 & 22 SHEET _____ OF _____

NOTES LOCHRE

H.C. Hoffman

R.C. BARNHISEL

DATE 7-21-89

WEATHER HAZY

TEMP. 78.0

ROUTE U.S. 23

COUNTY SENECA

TOWNSHIP LOUPON

SECTION 31

T _____ R _____

TYPE MONUMENT A Sm RR Spike

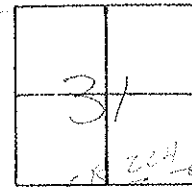
ON SURFACE - BELOW Yes

LEFT - C PAV'T. - RIGHT _____

122 TO RT EDGE PAVEMENT

S.L.M. 350 +52

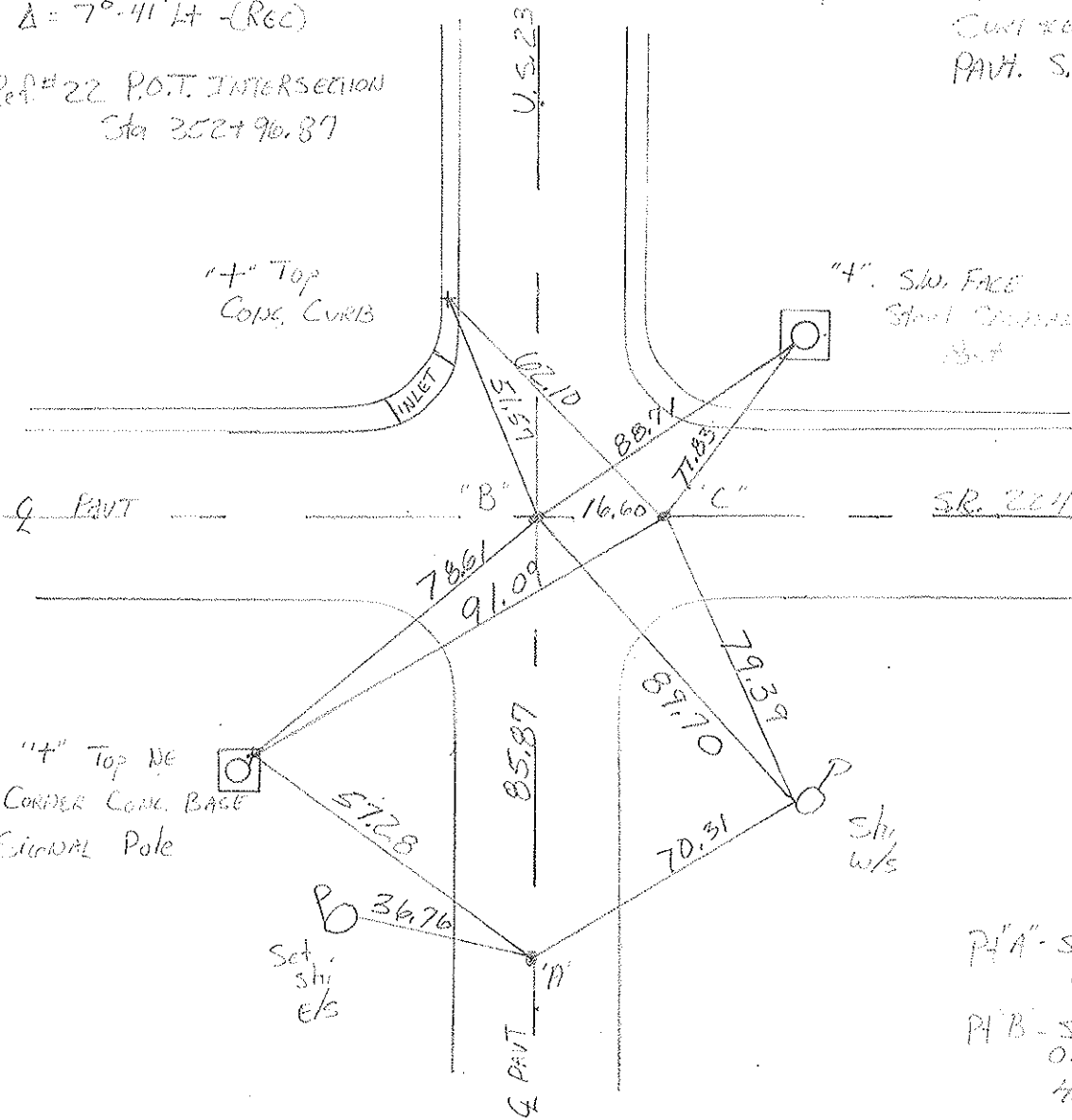
Set PK/washer
AT ALL THREE
POINTS
11-2-89 and



Pt. A Ref #21 P.I. Sta 3527+11.19
 $\Delta = 7^{\circ} 41' 14''$ (RCC)

PA'C" Fd P1 on
Curve of
PAV'T. SR, 224

Pt. B Ref #22 P.O.T. INTERSECTION
Sta 3527+90.87



"4" Top NE
CORNER CONC. BASE
SIGNAL Pole

Set
sh
e/s

PA'A - Sm. RR spike
ON Q 23
PA'B - Sm. "I" spike
ON Q 23
H.S.C. & PAV'
114
PA'C - Sm. "I" spike
S.B.C. & PAV'

County Seneca S.R. U.S. 23 & 224

Date 6-23-81

Township London

Weather clear

Section 31

Temp. +75°

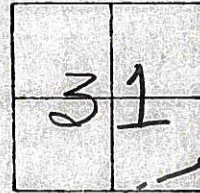
T. N. R. E

Personnel Hoffman

Householder

21 22-A

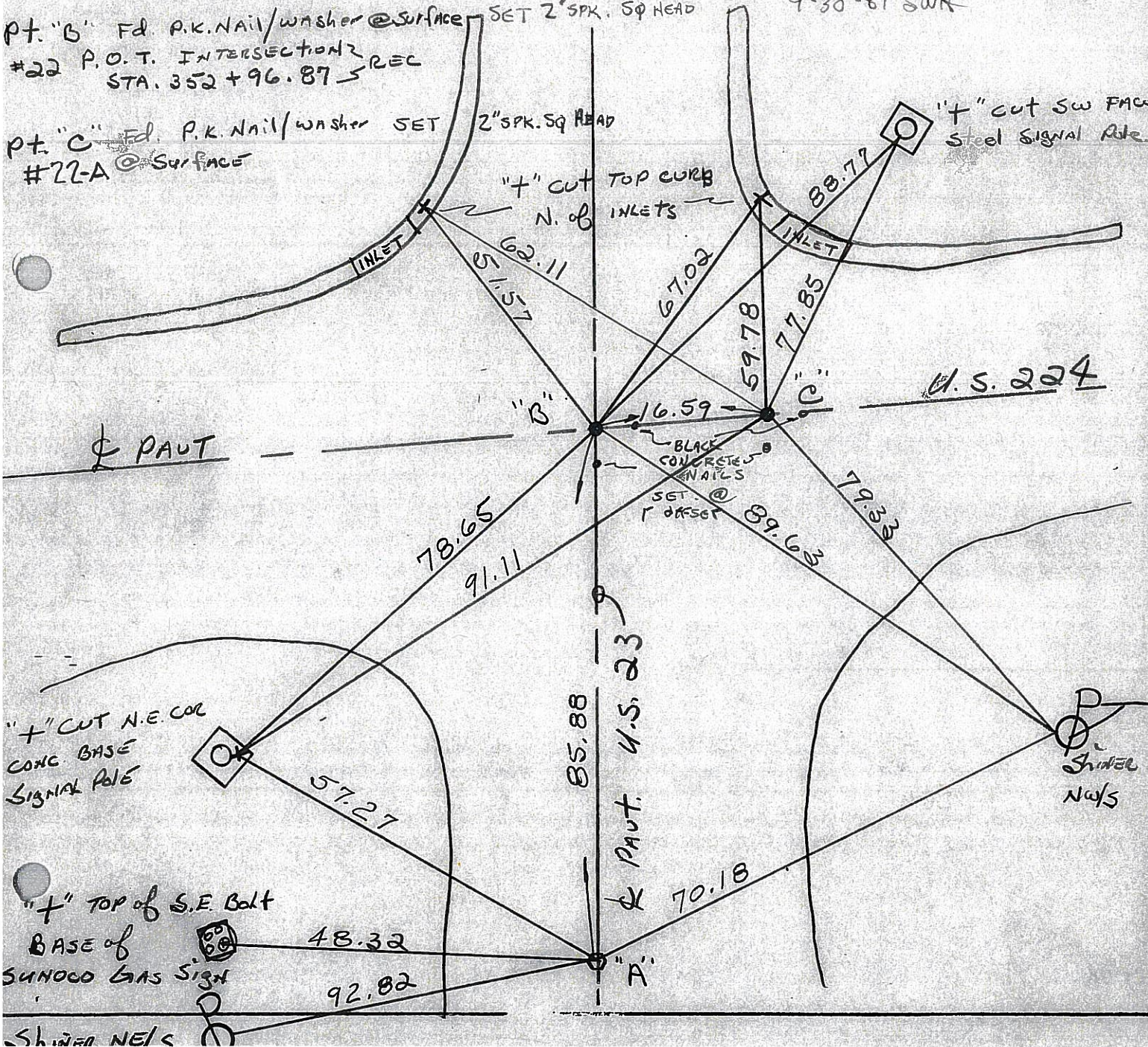
22



Pt. "A" Fd. small R.R. SPK 2" Below Surface @ Ctr of PAUT., Project STA.
 #21 P.I. STA. 352+11.19 - Δ=7° 41' Lt. - REC. SET SMALL R.R. SPK. ±350+80
 9-30-81 SWK

Pt. "B" Fd. P.K. Nail/washer @ Surface SET 2" SPK. SQ HEAD
 #22 P.O.T. INTERSECTION? STA. 352+96.87 - REC

Pt. "C" Fd. P.K. Nail/washer SET 2" SPK. SQ HEAD
 #22-A @ Surface



PERSONNEL TITLE PERSONNEL TITLE
Schneider

COUNTY Seneca DATE 3-13-73

S. R. U.S. # 23 WEATHER Cloudy

SEC. Lat. U.S. 224 & 23 TEMP. 45°

DESCRIPTION Ties LEFT CENTER LINE RIGHT JOB NO.

