

O.D.O.T. DISTRICT 2 SURVEY OFFICE (USE ONLY)

PERSONNEL

REFERENCE NO. 23

SHEET 4 OF 17

NOTES O'DONNELL

DATE 5/12/21

ROUTE US 23

H.C. AUBLE

WEATHER SUNNY

COUNTY SENECA

R.C. NIESE

TEMP. 51°

TOWNSHIP LOUDON

SECTION 31

DWG BY RHOADES PID 85264

T 2 N R 13 E

TYPE MONUMENT P.K.NAIL

ON SURFACE - ~~BELOW~~ ON

OFFSET \odot PAVEMENT 0.4' LT : ~~RT~~

11.4' TO LT EDGE PAVEMENT

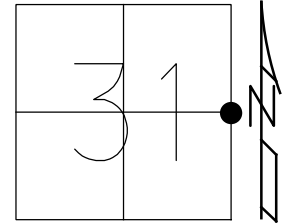
STATION: 370+41.19

HORZ.DATUM: NAD83 2011

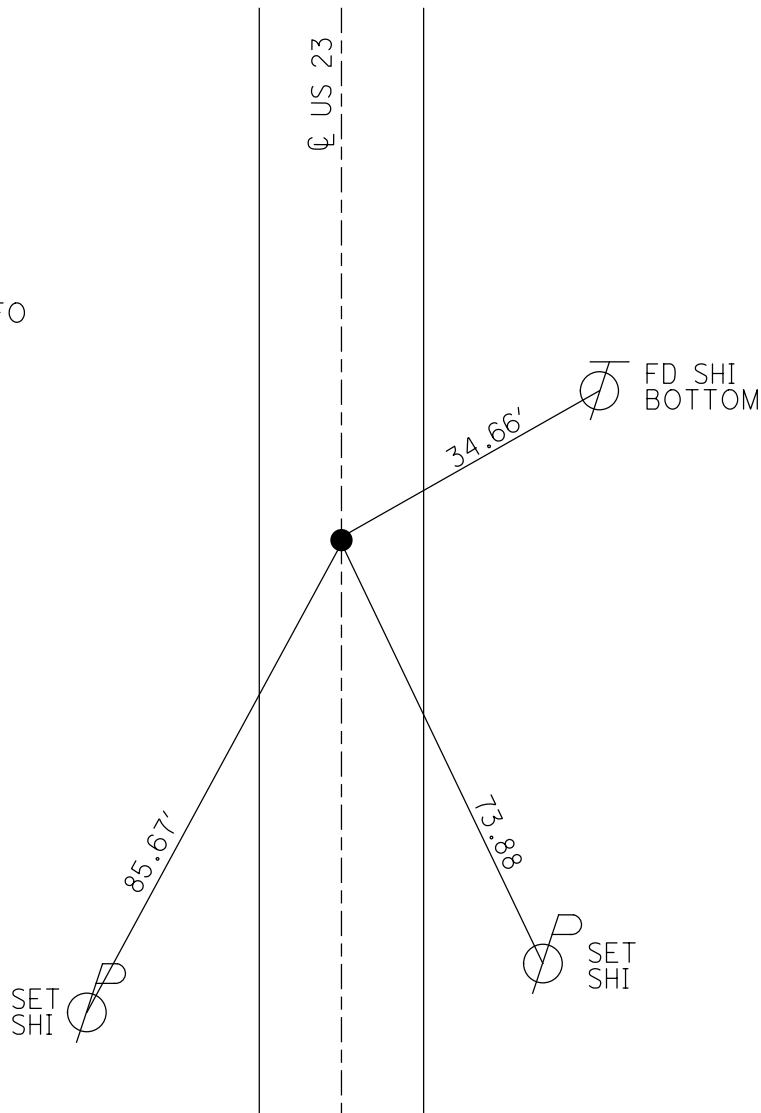
GEOID: 2012A

GRID: NORTHING: 518661.705

EASTING: 1720074.159



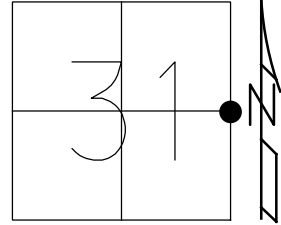
RECORD: P.I.
 STA. 370+41.19
 $\Delta = 0^\circ 03' RT$
 FD SM.R.R.SPIKE
 7/21/89, CL
 SET P.K./WASHER
 9/3/89, SWH
 FD P.K.NAIL
 REF23
 10/26/18, JMR
 8/16/19, 5/12/21, JFO
 SET MAG/WASHER
 12/13/21, DSA



O.D.O.T. DISTRICT 2 SURVEY OFFICE (USE ONLY)

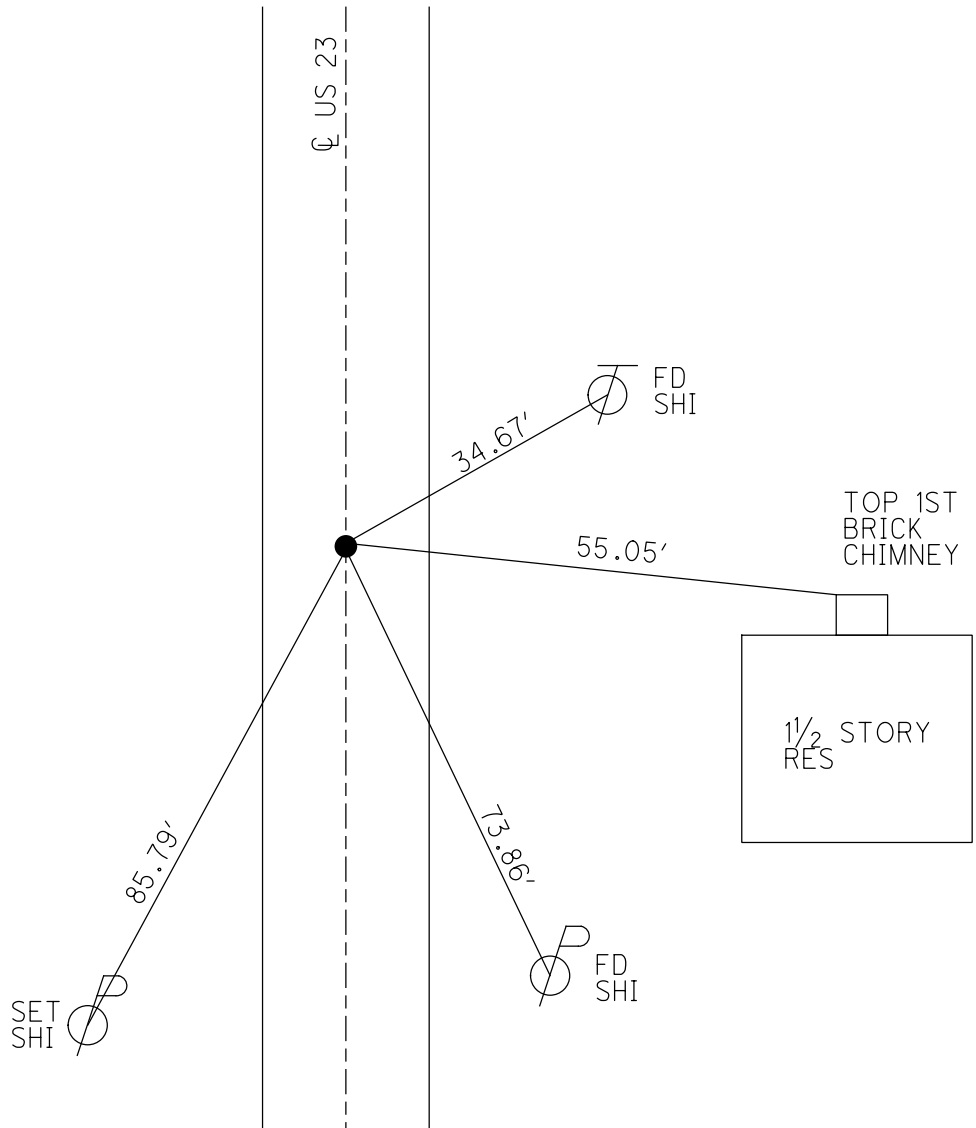
PERSONNEL _____ REFERENCE NO. 23 SHEET 4 OF 12
 NOTES LOEHRKE DATE 7/21/89 ROUTE US 23
 H.C. HOFFMAN WEATHER HAZY COUNTY SENECA
 R.C. BARNHISEL TEMP. 83 TOWNSHIP LOUDON
 _____ SECTION 31
 DWG BY RHOADES PID PT-SEN19 T 2 N R 13 E

TYPE MONUMENT SM.R.R.SPIKE
 ON SURFACE - ~~BELOW~~ ON
 OFFSET \odot PAVEMENT 0.4' LT : ~~RT~~
11.4' TO LT EDGE PAVEMENT
 STATION: 370+41.19



HORZ.DATUM: NAD83 2011 GEOID: 2012A
 GRID: NORTHING: 518661.705 EASTING: 1720074.159

RECORD: P.I.
 STA.370+41.19
 $\Delta = 0^\circ 03' RT$
 FD SM.R.R.SPIKE
 7/21/89, CL
 SET P.K./WASHER
 9/3/89, SWH
 FD P.K.NAIL
 REF23
 10/26/18, JMR
 8/16/19, JFO



O.D.O.T. DISTRICT 2 SURVEY OFFICE

PERSONNEL _____

REFERENCE NO. 23

SHEET _____ OF _____

NOTES LOEHRKE

H.C. Hoffman

R.C. BARNHISEL

DATE 7-21-89

WEATHER Hazy - Humid

TEMP. +83

ROUTE U.S. 23

COUNTY SENeca

TOWNSHIP LowDell

SECTION 31

T _____ R _____

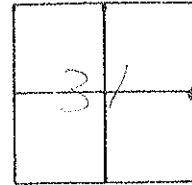
TYPE MONUMENT Sm RR spike *Set PC/warning*

ON SURFACE - BELOW Yes *7-2-89 SUR*

LEFT - C. PAV'T. - RIGHT 0.4 Lt

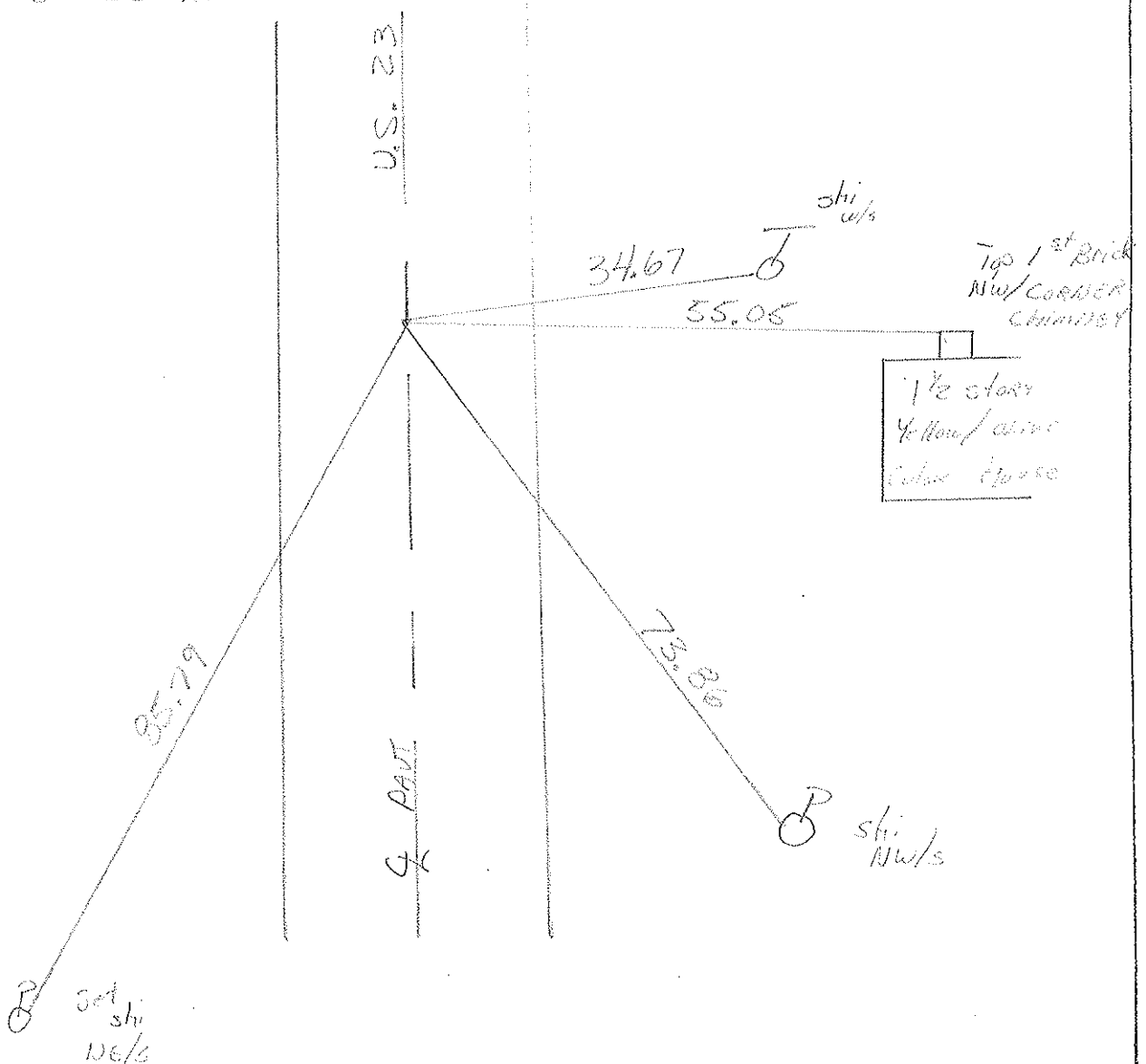
11.4 TO Lt EDGE PAVEMENT

S.L.M. 368 +89



Rec; P.I. Sta 370 + 41.19

$\Delta = 0^\circ - 03' \text{ RT}$



County Seneca S.R. U.S. 23

Township London

Section 31

T. N, R. E

Personnel Hoffman

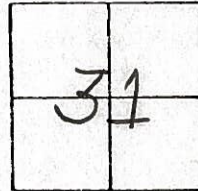
Householder

#23

Date 6-23-81

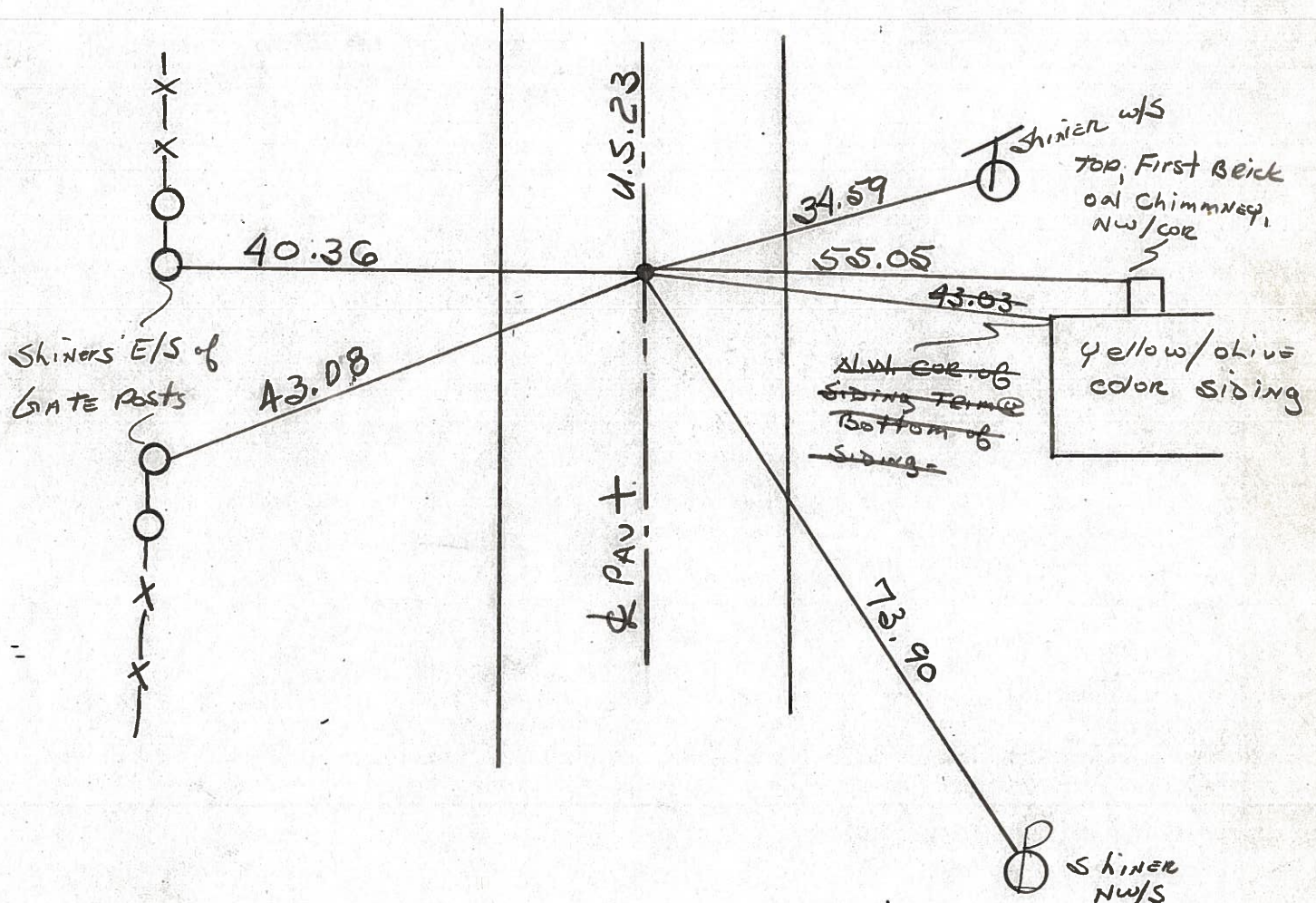
Weather Clear

Temp. +75°



Fd. P.K. NAIL/WASHER @ SURFACE @ ctr. of PAUT.

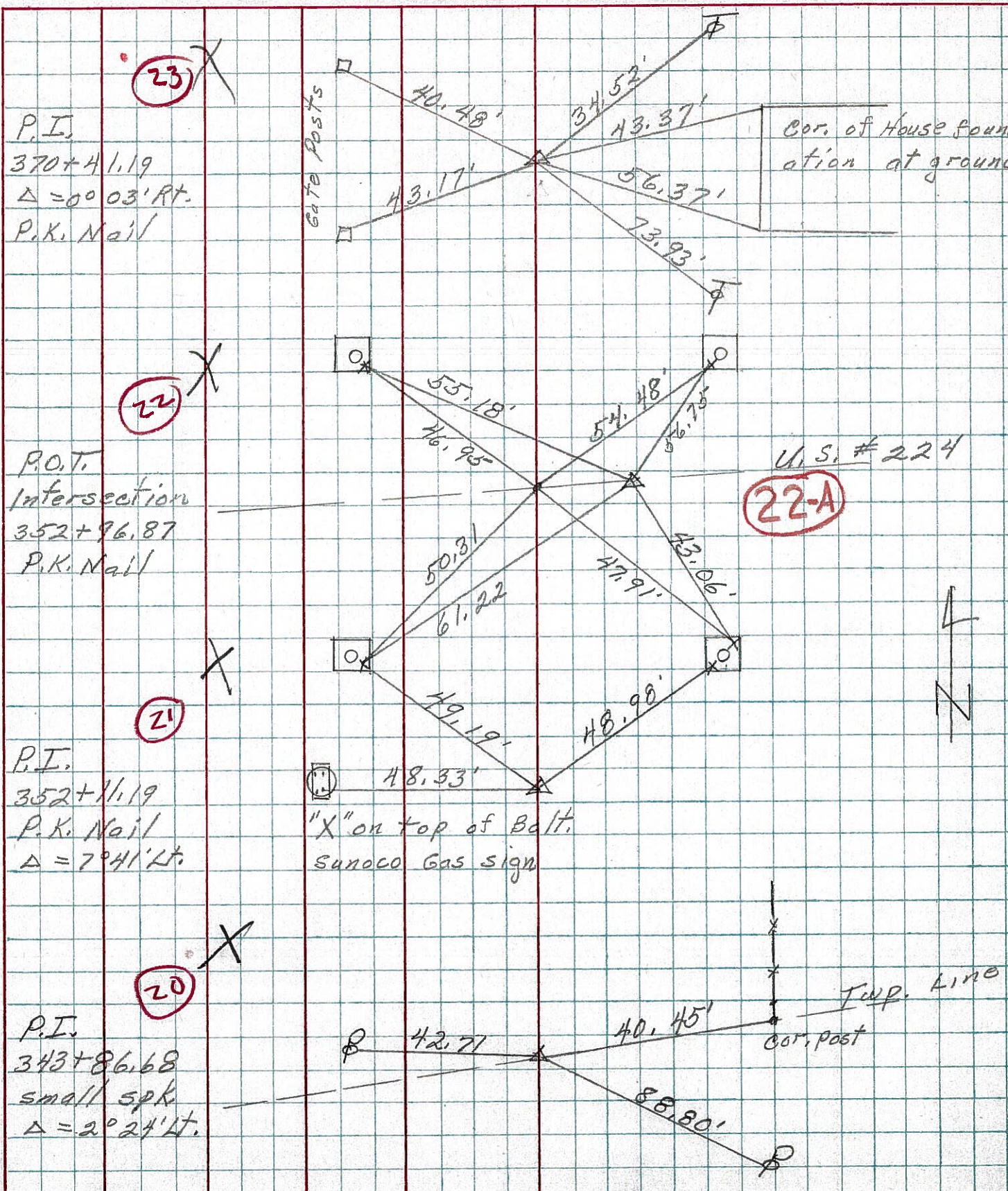
SET SMALL R.R. SPR. 9-30-81 SWH



P.I. STA. 370 + 41.19 - Δ = 0° - 03' Rt. ~ REC.

PERSONNEL TITLE PERSONNEL TITLE COUNTY Seneca DATE 3-13-73
Schneider _____ S. R. U.S. # 23 WEATHER Cloudy
 _____ _____ SEC. Lat. U.S. 224 & 23 TEMP. 45°

DESCRIPTION Ties LEFT CENTER LINE RIGHT JOB NO. _____

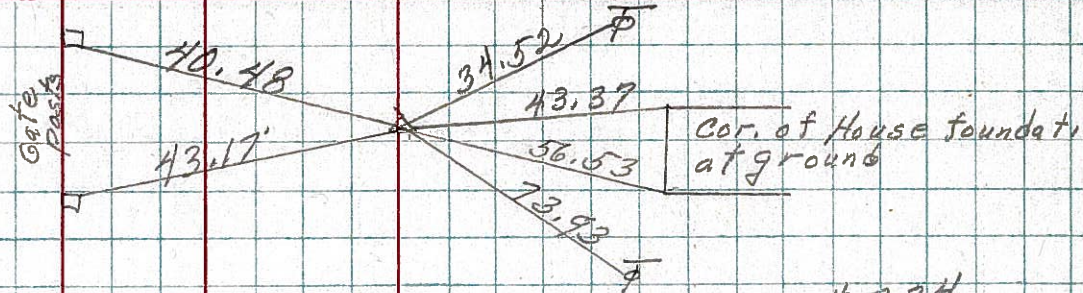


PERSONNEL	TITLE	PERSONNEL	TITLE
COUNTY <u>Seneca</u> DATE <u>3-13-73</u>			
S. R. <u>23</u> WEATHER <u>cloudy</u>			
SEC. <u>Lot. U.S. 224 & 23</u> TEMP. <u>50°</u>			

DESCRIPTION	LEFT	CENTER LINE	RIGHT	JOB NO.
-------------	------	-------------	-------	---------

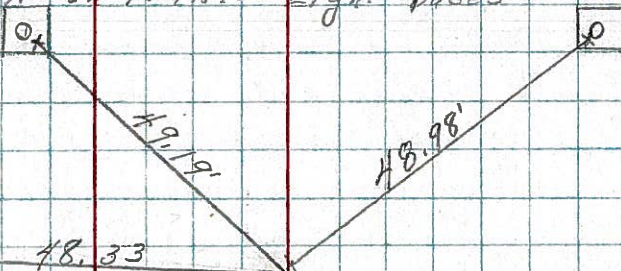
23

P.I.
370+41.49
 $\Delta = 0^{\circ} 03' \text{ Rt.}$
P.K. Nail



8321

"X" on Traffic Light bases



21

P.I.
352+11.19
P.K. Nail
 $\Delta = 7^{\circ} 41' \text{ Lt.}$

"X" on top bolt
Sunoco Gas sign

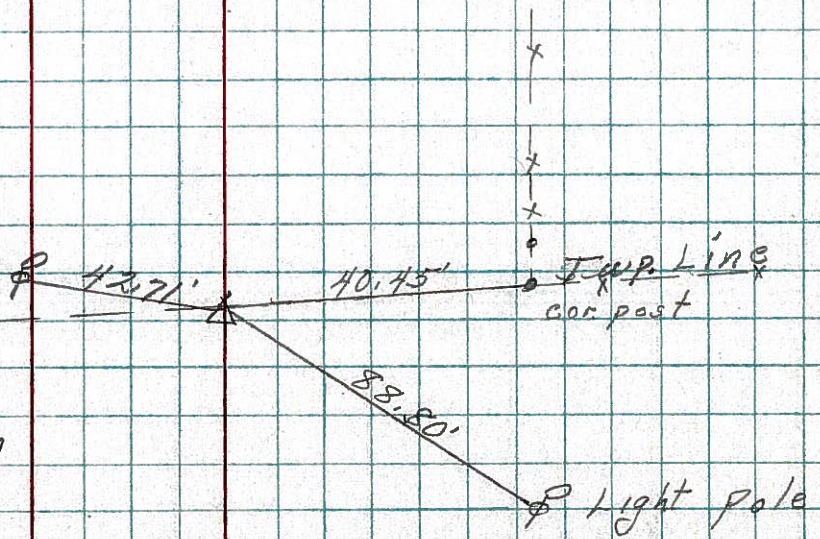
8320



20

P.I.
343+86.68
small spk.
 $\Delta = 2^{\circ} 24' \text{ Lt.}$

8319



PERSONNEL	TITLE	PERSONNEL	TITLE	COUNTY	DATE	WEATHER	TEMP.
<u>Schneider</u>				<u>Seneca</u>	<u>8-27-69</u>	<u>Fair</u>	<u>70°</u>
<u>Mosser</u>				<u>S. R. U.S. 23</u>			
<u>Barbour</u>							
<u>Potts</u>							

DESCRIPTION Ties for Control Points JOB NO. _____

