

O.D.O.T. DISTRICT 2 SURVEY OFFICE (USE ONLY)

PERSONNEL

REFERENCE NO. 24

SHEET 5 OF 17

NOTES O'DONNELL

DATE 5/12/21

ROUTE US 23

H.C. AUBLE

WEATHER SUNNY

COUNTY SENECA

R.C. NIESE

TEMP. 50°

TOWNSHIP LOUDON

SECTION 30

DWG BY RHOADES

PID 85264

T 2 N R 13 E

TYPE MONUMENT SM.R.R.SPIKE

~~ON SURFACE~~ - BELOW 3"

OFFSET C PAVEMENT ON LT : RT

- TO - EDGE PAVEMENT 1.5' S OF C CR 108

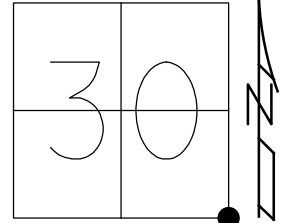
STATION: 396+88.69

HORZ.DATUM: NAD83 2011

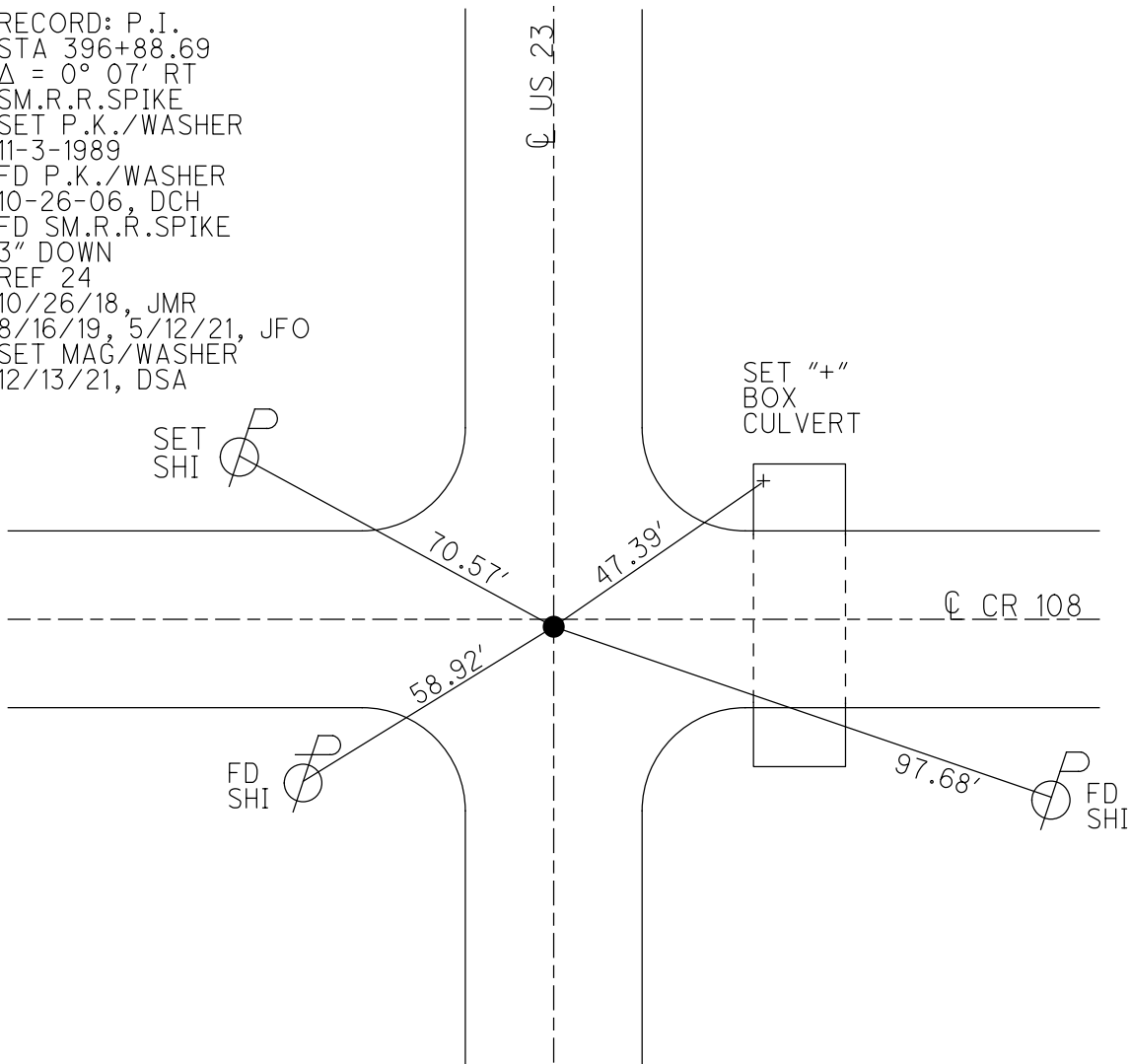
GEOID: 2012A

GRID: NORTHING: 521308.864

EASTING: 1720077.919



RECORD: P.I.
 STA 396+88.69
 $\Delta = 0^{\circ} 07' RT$
 SM.R.R.SPIKE
 SET P.K./WASHER
 11-3-1989
 FD P.K./WASHER
 10-26-06, DCH
 FD SM.R.R.SPIKE
 3" DOWN
 REF 24
 10/26/18, JMR
 8/16/19, 5/12/21, JFO
 SET MAG/WASHER
 12/13/21, DSA



O.D.O.T. DISTRICT 2 SURVEY OFFICE (USE ONLY)

PERSONNEL

REFERENCE NO. 24

SHEET 5 OF 12

NOTES HOMAN

DATE 10/26/06

ROUTE US 23

H.C. HOMAN

WEATHER SUNNY

COUNTY SENECA

R.C. MIKLOVIC

TEMP. 35°

TOWNSHIP LOUDON

SECTION 30

DWG BY NASON

PID PT-SEN19

T 2 N R 13 E

TYPE MONUMENT P.K. WASHER

ON SURFACE - ~~BELOW~~ ON

OFFSET ☉ PAVEMENT ON ~~RT~~ : RT

- TO - EDGE PAVEMENT 1.5' S OF ☉ CR 108

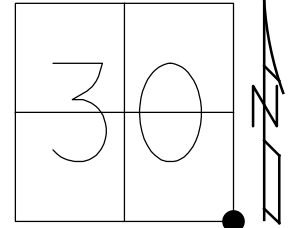
STATION: 396+88.69

HORZ. DATUM: NAD83 2011

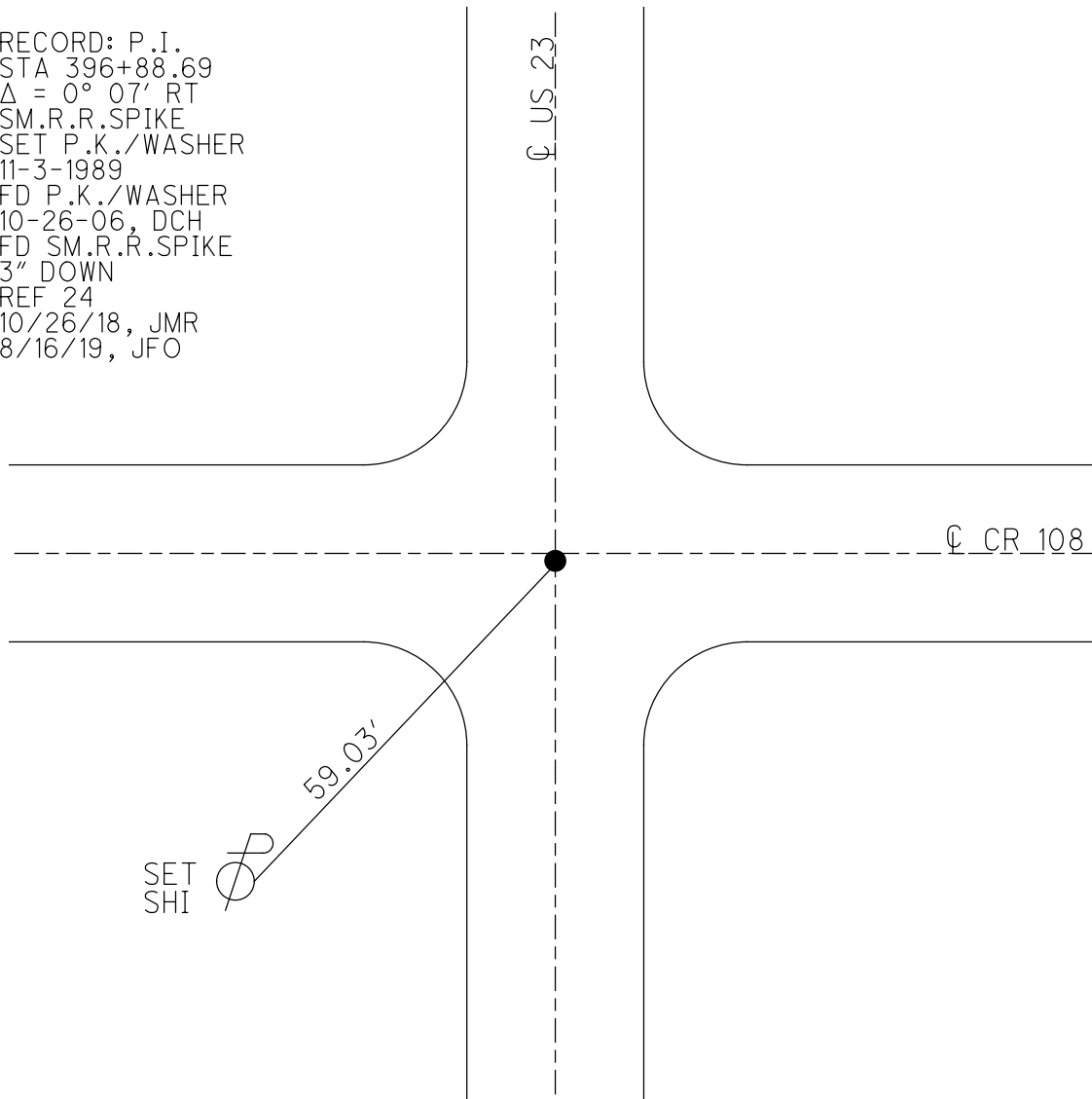
GEOID: 2012A

GRID: NORTHING: 521308.864

EASTING: 1720077.919



RECORD: P.I.
 STA 396+88.69
 $\Delta = 0^\circ 07' RT$
 SM.R.R.SPIKE
 SET P.K./WASHER
 11-3-1989
 FD P.K./WASHER
 10-26-06, DCH
 FD SM.R.R.SPIKE
 3" DOWN
 REF 24
 10/26/18, JMR
 8/16/19, JFO



O.D.O.T. DISTRICT 2 SURVEY OFFICE (USE ONLY)

PERSONNEL _____ REFERENCE NO. 24 SHEET 1 OF 8

NOTES HOMAN DATE 10-26-2006 ROUTE US 23

H.C. HOMAN WEATHER SUNNY COUNTY SENECA

R.C. MIKLOVIC TEMP. 35° F TOWNSHIP LOUDON

SECTION 30

T 2 N R 13 E

TYPE MONUMENT P.K.WASHER

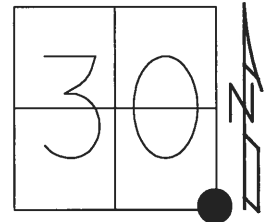
ON SURFACE - ~~BELOW~~ ON _____

~~LEFT~~ - ☉ PAV'T - RIGHT ON, 1.5' S OF ☉ CR 108

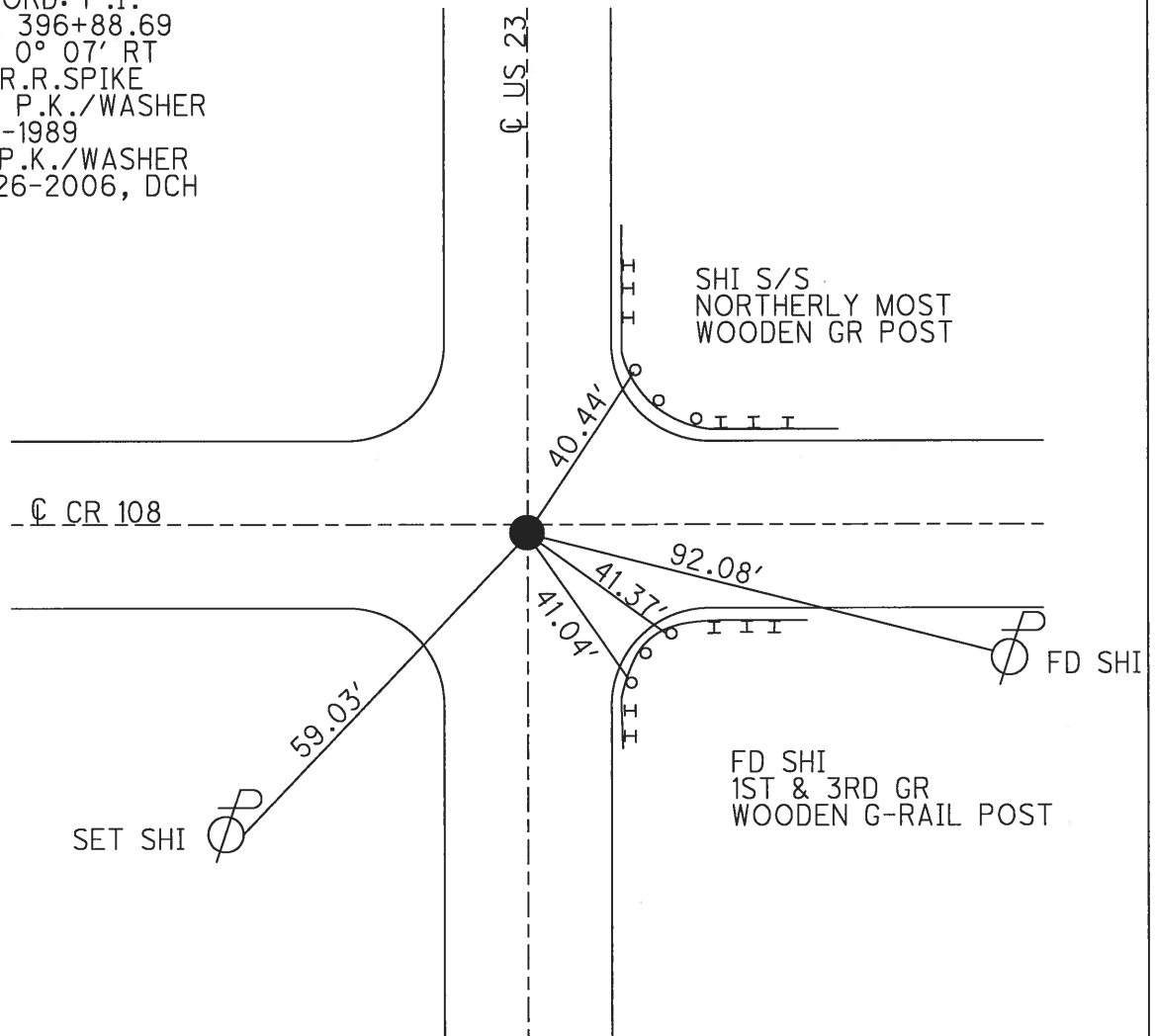
- TO - EDGE PAVEMENT

S.L.M. 395+43

GRID: NORTHING: - EASTING: -



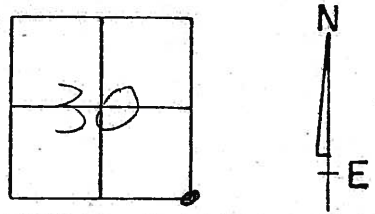
RECORD: P.I.
 STA 396+88.69
 $\Delta = 0^\circ 07' RT$
 SM.R.R.SPIKE
 SET P.K./WASHER
 11-3-1989
 FD P.K./WASHER
 10-26-2006, DCH



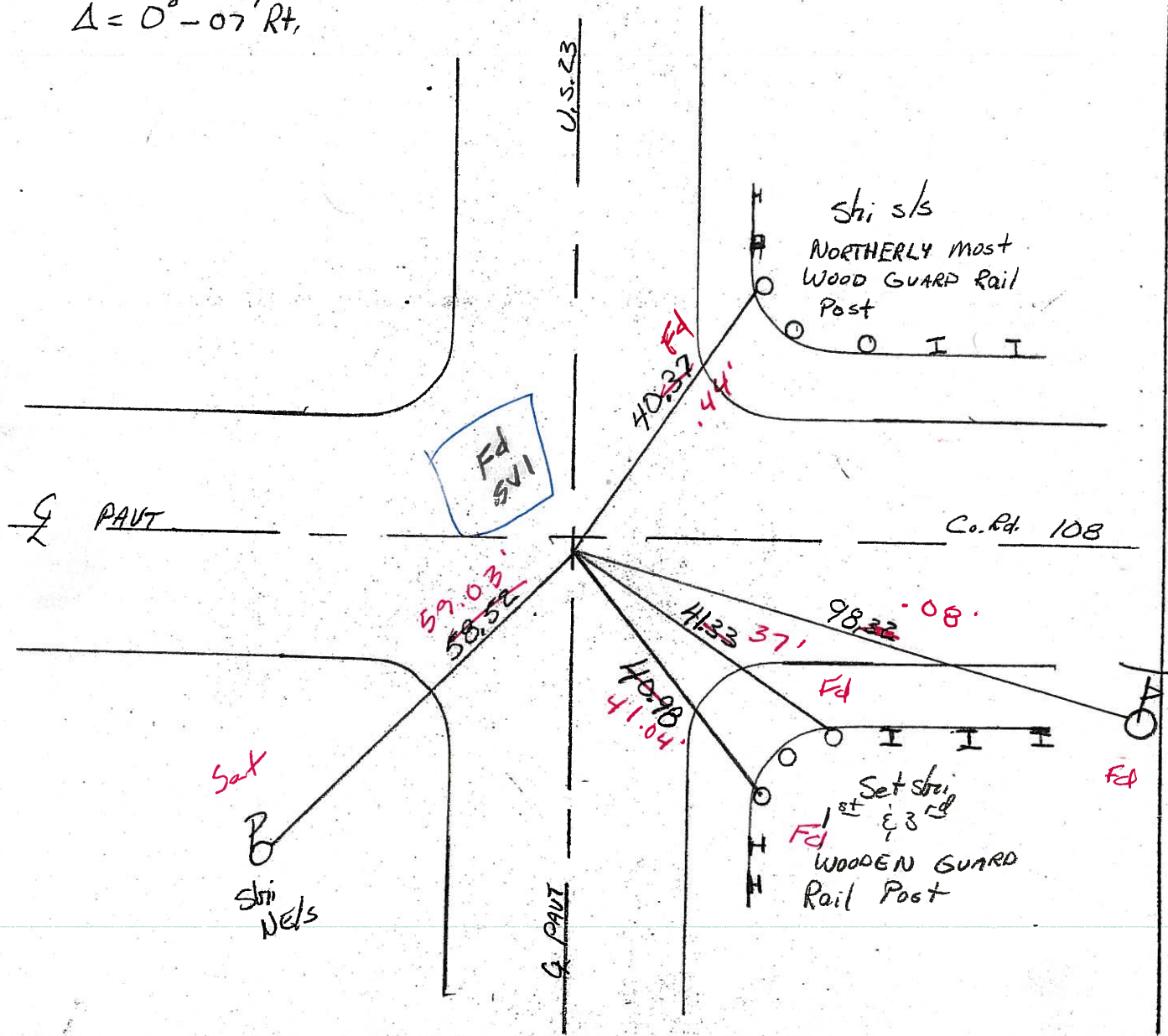
O.D.O.T. DISTRICT 2 SURVEY OFFICE

PERSONNEL _____ REFERENCE NO. 24 SHEET _____ OF _____
 NOTES LOEHRKE *Homan* 10-26-06
 H.C. HOFFMAN *Homan* DATE 7-21-89
 R.C. BARNTSEL *Miklovic* WEATHER HOT - HAZY Sunny ROUTE U.S. 23
 COUNTY SENECA
 TOWNSHIP LOVDON
 SECTION 30
 T. _____ R. _____

TYPE MONUMENT Sm. R.R. SPIKE *PK* Sat P.K./washer
 ON SURFACE - BELOW YES ✓ *11-3-89 SWM*
 LEFT - & PAVT. - RIGHT YES ✓ *1.5' S. & PAVT*
 TO _____ EDGE PAVEMENT *C.R. 108*
 S.L.M. 3957 43



REC. P.I. Sta 396+88.69
 $\Delta = 0^\circ - 07' \text{ Rt.}$



O.D.O.T. DISTRICT 2 SURVEY OFFICE

PERSONNEL _____

REFERENCE NO. 24

SHEET _____ OF _____

NOTES LOEHRKE

H.C. Hoffman

R.C. BARNHISEL

DATE 7-21-89

WEATHER Hot - HAZY

TEMP. +85

ROUTE U.S. 23

COUNTY SENECA

TOWNSHIP London

SECTION 30

T _____ R _____

TYPE MONUMENT Sm. R.R. SPIKE

ON SURFACE - BELOW YES

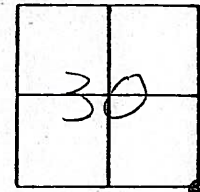
LEFT - & PAV'T. - RIGHT YES

TO _____ EDGE PAVEMENT

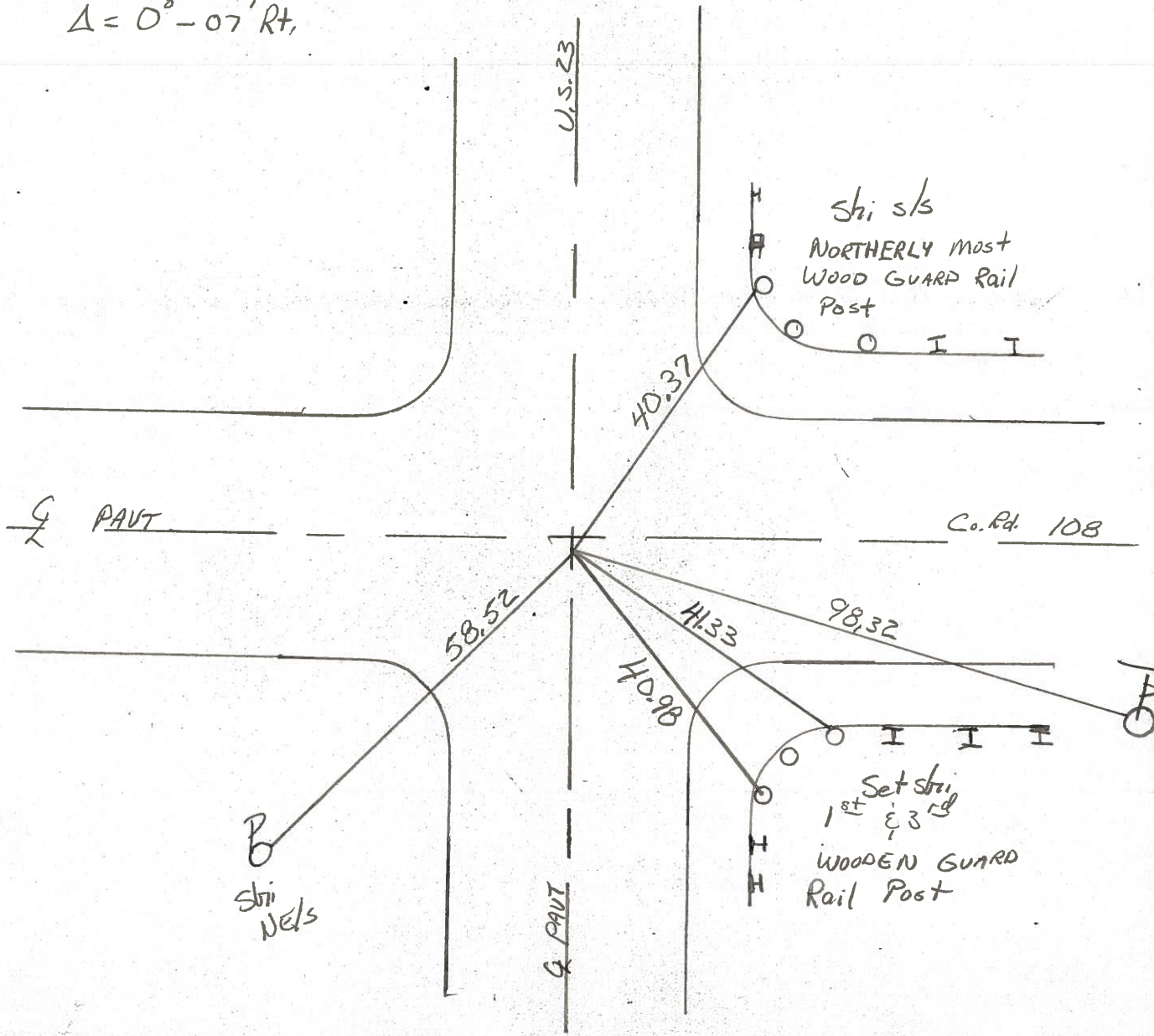
S.L.M. 3957 43

Sat P.K./Woustar
11-3-89 SWN

1.5' S. & PAVT
C.R. 108



Rec: P.I. Sta 396+88.69
 $\Delta = 0^\circ - 07' \text{ Rt.}$



County Seneca S.R. U.S. 23

Township London

Section 30

T N, R E

Personnel NoFFman

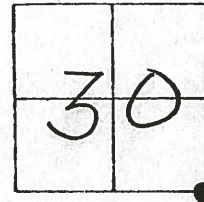
Householder

Date 6-23-81

Weather Clear

Temp. +75°

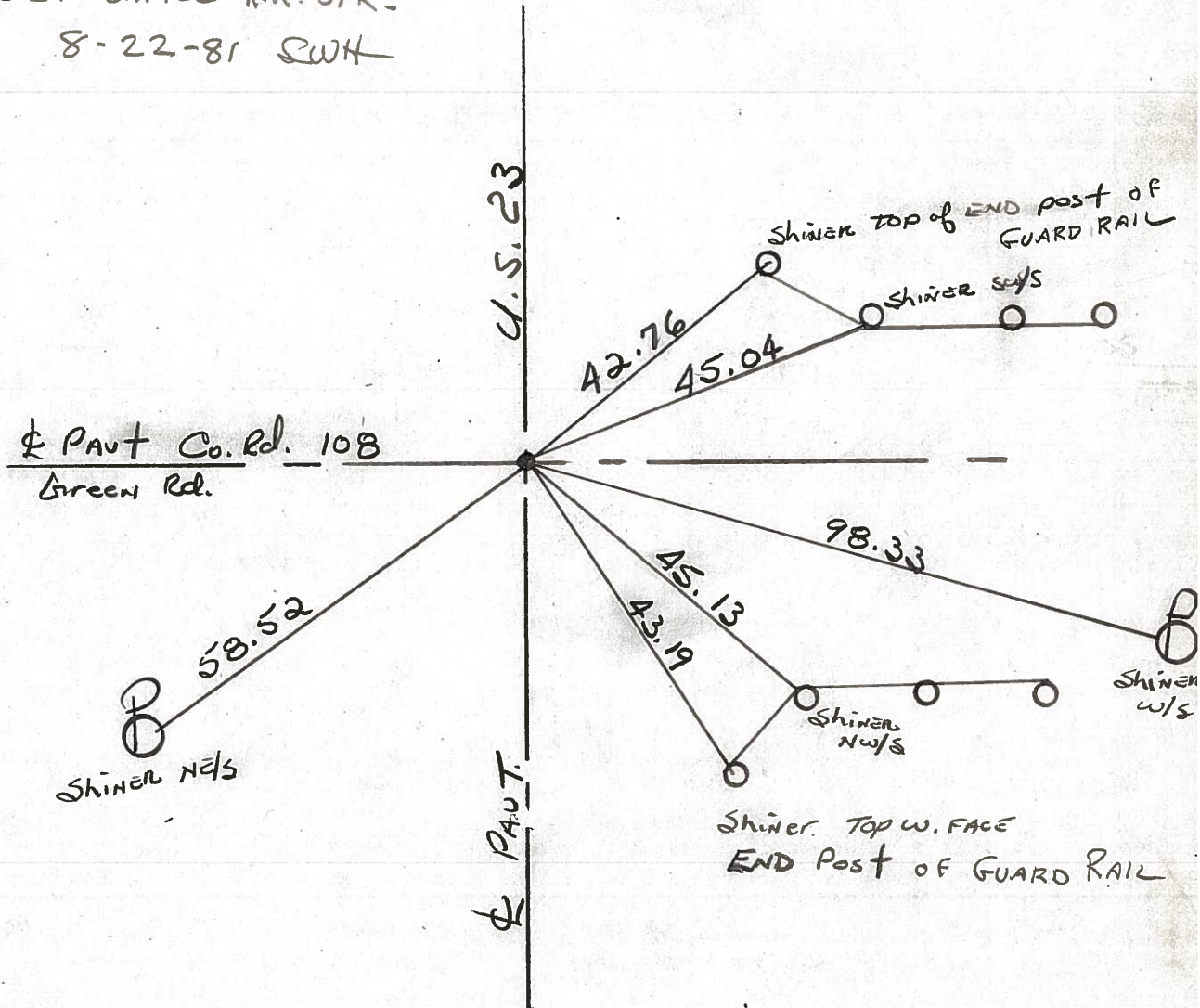
24



Fd. P.K. Nail/washer @ SURFACE
@ ctr. of PAUTS.

PROJECT STA ± 395+70

SET SMALL R.R. SPK.
8-22-81 SWH



P.I. STA. 396+88.69 - Δ = 0°-07' RT. ~ REC.

PERSONNEL	TITLE	PERSONNEL	TITLE	COUNTY	<u>Seneca</u>	DATE	<u>8-27-6</u>
<u>H. Schneider</u>				S. R.	<u>W.S. 23</u>	WEATHER	<u>Fair</u>
<u>E. Mosser</u>				SEC.	<u>Wyandot Co. line N.</u>	TEMP.	<u>70°</u>
<u>R. Barbour</u>							
<u>C. Potts</u>							

DESCRIPTION Ties for Control Points JOB NO. _____

