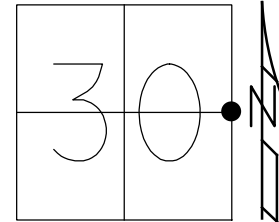


O.D.O.T. DISTRICT 2 SURVEY OFFICE (USE ONLY)

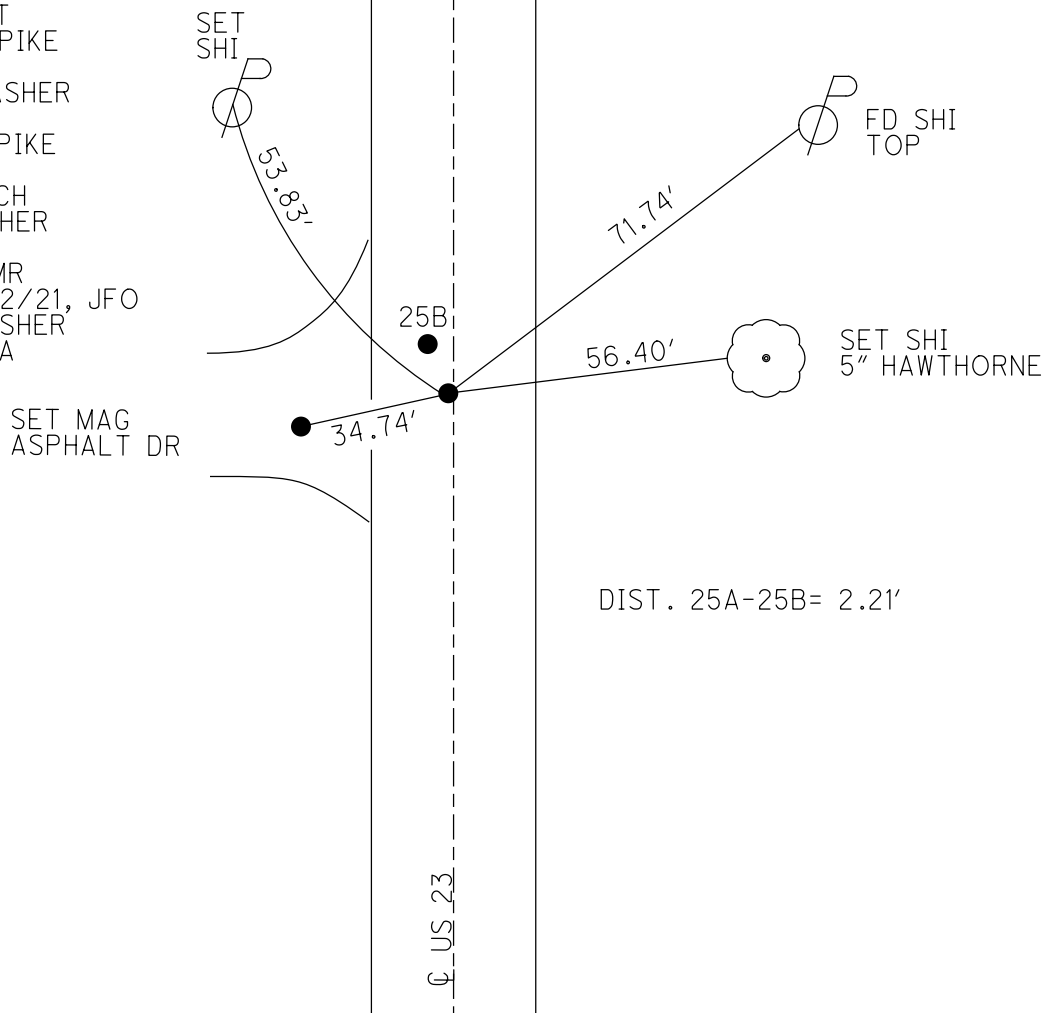
PERSONNEL \_\_\_\_\_ REFERENCE NO. 25 A SHEET 6 OF 17  
 NOTES O'DONNELL DATE 5/12/21 ROUTE US 23  
 H.C. AUBLE WEATHER SUNNY COUNTY SENECA  
 R.C. NIESE TEMP. 50° TOWNSHIP LOUDON  
 DWG BY RHOADES PID 85264 SECTION 30  
 T 2 N R 13 E

TYPE MONUMENT MAG/WASHER  
 ON SURFACE - ~~BELOW~~ ON  
 OFFSET ☐ PAVEMENT 0.4' LT : RT  
11.4' TO LT EDGE PAVEMENT  
 STATION: 423+38.99



HORZ. DATUM: NAD83 2011 GEOID: 2012A  
 GRID: NORTHING: 523958.427 EASTING: 1720087.007

RECORD: P.I.  
 STA 423+38.99  
 $\Delta = 0^\circ 05' \text{ LT}$   
 FD SM.R.R.SPIKE  
 7-4-89  
 SET P.K./WASHER  
 11-3-89  
 FD LG.R.R.SPIKE  
 11" DOWN  
 10-25-06, DCH  
 FD MAG/WASHER  
 REFA25  
 10/26/18, JMR  
 8/16/19, 5/12/21, JFO  
 SET MAG/WASHER  
 12/13/21, DSA



DIST. 25A-25B= 2.21'

O.D.O.T. DISTRICT 2 SURVEY OFFICE (USE ONLY)

PERSONNEL

REFERENCE NO. 25 A

SHEET 6 OF 12

NOTES HOMAN

DATE 10/25/06

ROUTE US 23

H.C. HOMAN

WEATHER CLOUDY

COUNTY SENECA

R.C. CORDES

TEMP. 40°

TOWNSHIP LOUDON

SECTION 30

DWG BY NASON

PID PT-SEN19

T 2 N R 13 E

TYPE MONUMENT LG.R.R.SPIKE

ON ~~SURFACE~~ - BELOW 11"

OFFSET 0.4' ~~LT~~ : ~~RT~~

11.4' TO LT. EDGE PAVEMENT

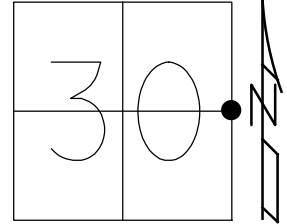
STATION: 423+38.99

HORZ.DATUM: NAD83 2011

GEOID: 2012A

GRID: NORTHING: 523958.427

EASTING: 1720087.007



RECORD: P.I.  
 STA 423+38.99  
 $\Delta = 0^\circ 05' \text{ LT}$   
 FD SM.R.R.SPIKE  
 7-4-89  
 SET P.K./WASHER  
 11-3-89  
 FD LG.R.R.SPIKE  
 11" DOWN  
 10-25-06, DCH  
 FD MAG/WASHER  
 REFA25  
 10/26/18, JMR  
 8/16/19, JFO

FD MAG  
 ASPHALT DR

1' UP  
 STEEL  
 MB POST

MB

25B

34.74'

38.83'

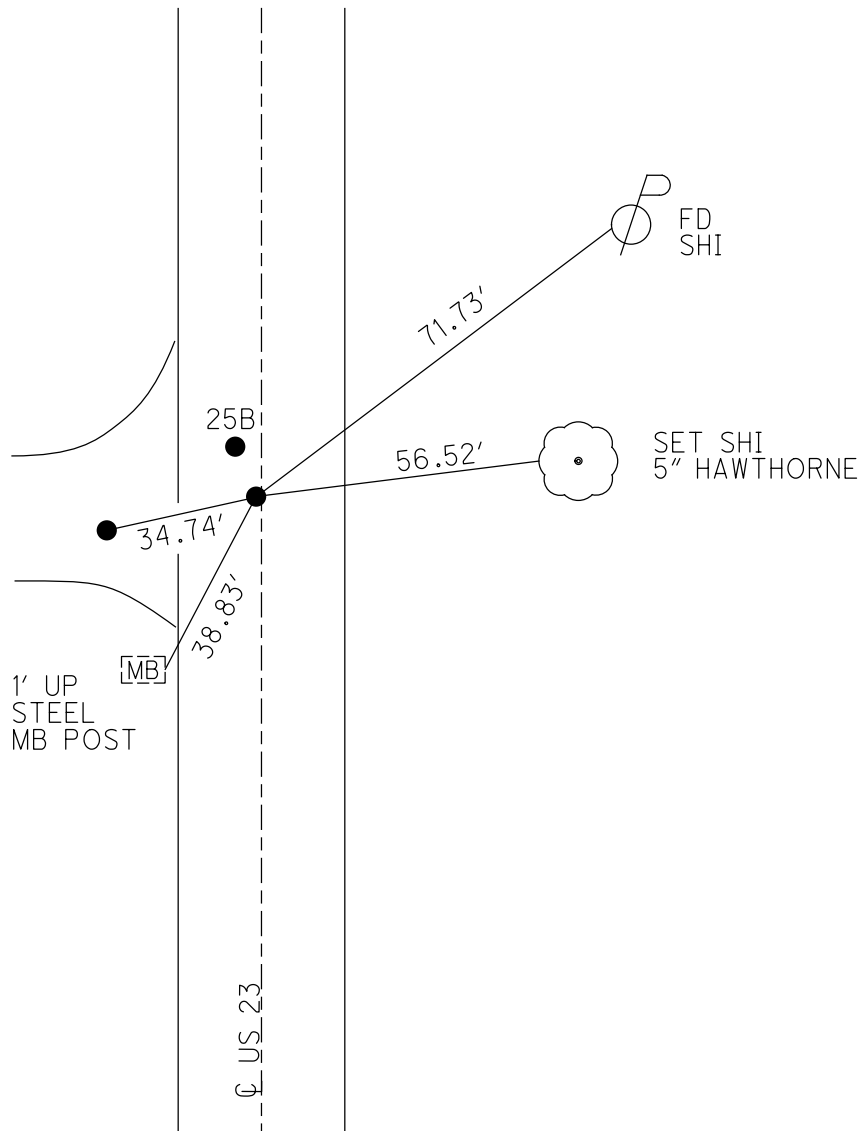
56.52'

71.73'

FD  
 SHI

SET SHI  
 5" HAWTHORNE

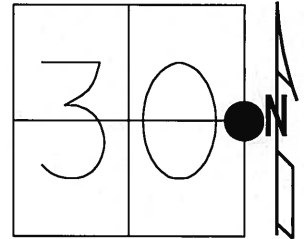
US 23



# O.D.O.T. DISTRICT 2 SURVEY OFFICE (USE ONLY)

PERSONNEL	REFERENCE NO. <u>25A</u>	SHEET	OF <u>    </u>
NOTES	DATE <u>10-25-2006</u>	ROUTE	<u>U.S. 23</u>
H.C. <u>Homan</u>	WEATHER <u>Cloudy</u>	COUNTY	<u>Seneca</u>
R.C. <u>Cordes</u>	TEMP. <u>40° F</u>	TOWNSHIP	<u>Loudon</u>
		SECTION	<u>30</u>
		T <u>2</u> N	R <u>13</u> E

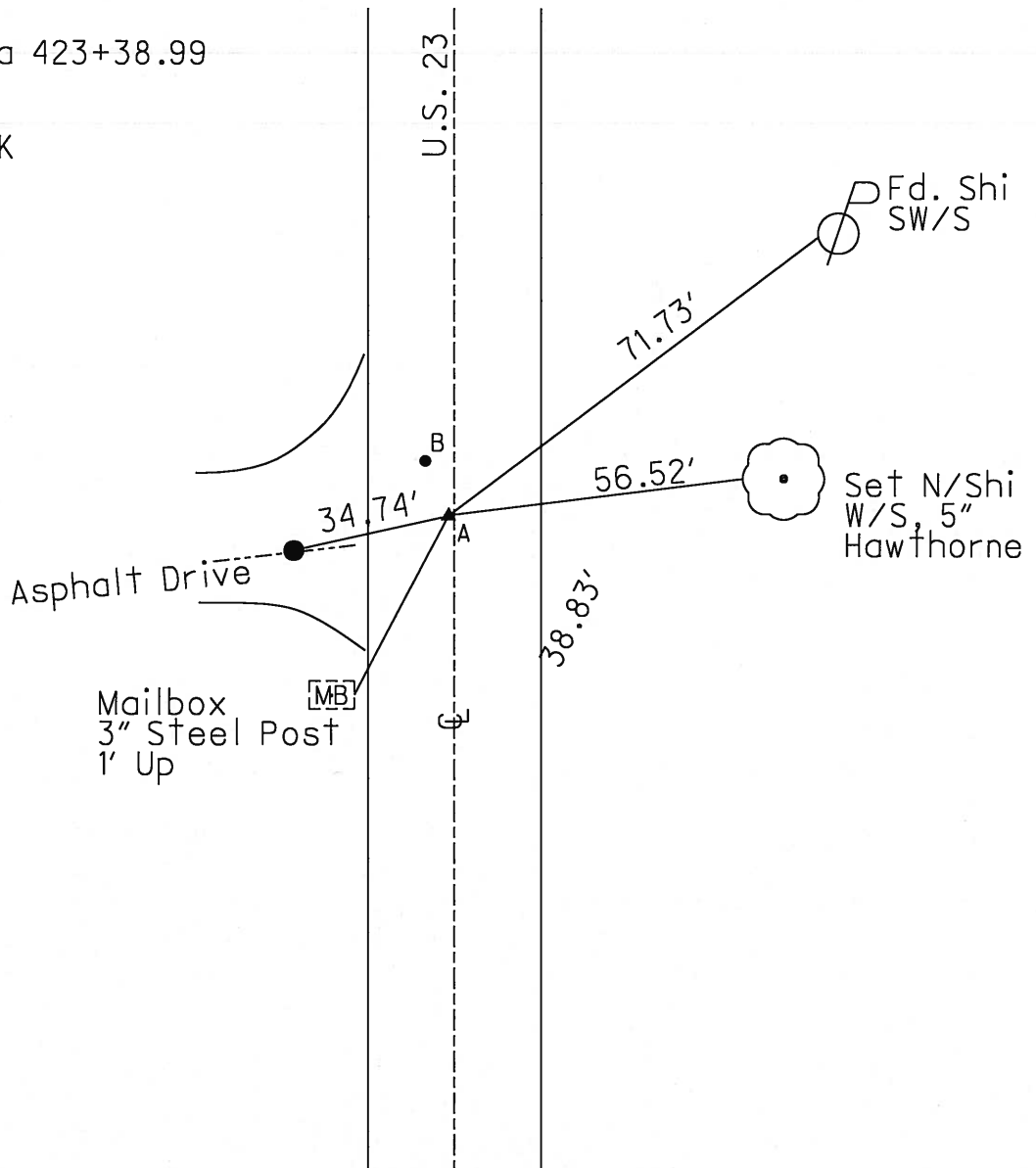
TYPE MONUMENT Lg. RSPK  
~~ON SURFACE - BELOW~~ 11"  
~~LEFT - C PAV'T - RIGHT~~ 0.4'  
     TO      EDGE PAVEMENT  
 S.I.M. 422+02



Grid: Northing:                      Easting:                     

Record

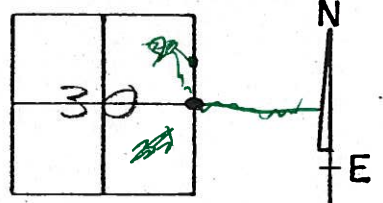
Rec: P.I. Sta 423+38.99  
 $\Delta = 0^\circ - 05'$   
 Fd. Lg. RSPK  
 11" Down  
 10-25-2006



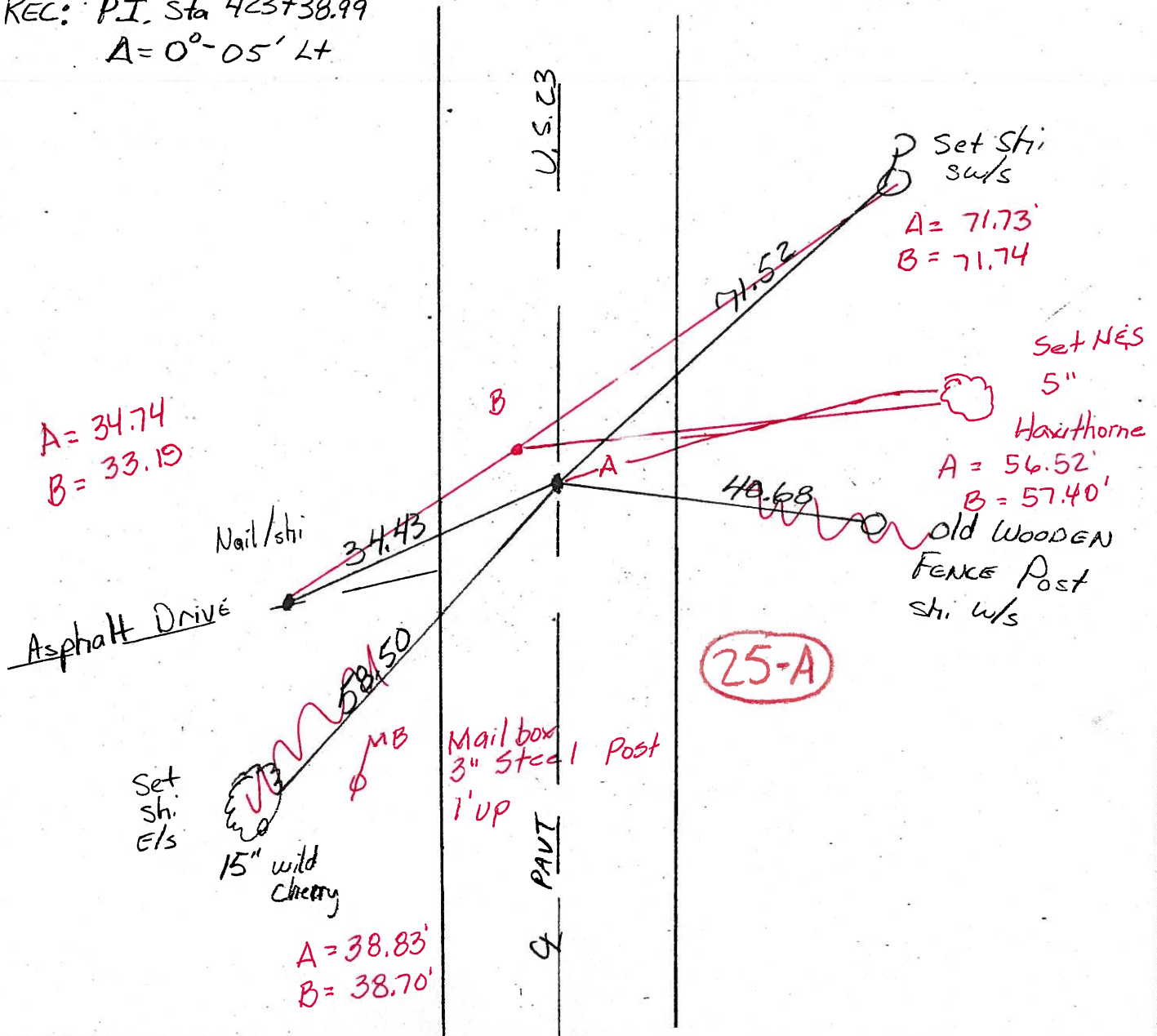
# O.D.O.T. DISTRICT 2 SURVEY OFFICE

PERSONNEL \_\_\_\_\_ REFERENCE NO. 25 SHEET \_\_\_\_\_ OF \_\_\_\_\_  
 NOTES LOENRKE Homan 10-25-06  
 H.C. Hoffman Homan DATE 7-21-89 ROUTE U.S. 23  
 R.G. BARNHISEL Cordes WEATHER Hot - Humid Cloud COUNTY SENECA  
 \_\_\_\_\_ TEMP. +85 40° TOWNSHIP LOUDON  
 \_\_\_\_\_ SECTION 30  
 \_\_\_\_\_ T 2 R 13 E

A = Lg. RR spike B = Mag Nail  
 TYPE MONUMENT Sm. RR Spike Set P.I. / WASH  
 ON SURFACE - BELOW Yes A = 11" B = 11-3-89 SWAY  
 LEFT - PAV'T. - RIGHT 0.4' Lt A = 0.4' Lt B = 2.0' Lt  
~~##~~ TO ~~LT~~ EDGE PAVEMENT  
 S.L.M. 422+02



REC: P.I. Sta 423+38.99  
 A = 0°-05' Lt



O.D.O.T. DISTRICT 2 SURVEY OFFICE

PERSONNEL \_\_\_\_\_

REFERENCE NO. 25

SHEET \_\_\_\_\_ OF \_\_\_\_\_

NOTES LOEHRKE

H.C. Hoffman

DATE 7-21-89

ROUTE U.S. 23

R.G. BARNHISEL

WEATHER Hot-Humid

COUNTY SENECA

TEMP. +85

TOWNSHIP LOUDON

SECTION 30

T \_\_\_\_\_ R \_\_\_\_\_

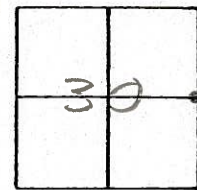
TYPE MONUMENT Sm. R.R. Spike Set P.K./WASHER

ON SURFACE - ~~BELOW~~ Yes 11-3-89 SW1/4

LEFT - C PAV'T. - ~~RIGHT~~ 0.4 Lt

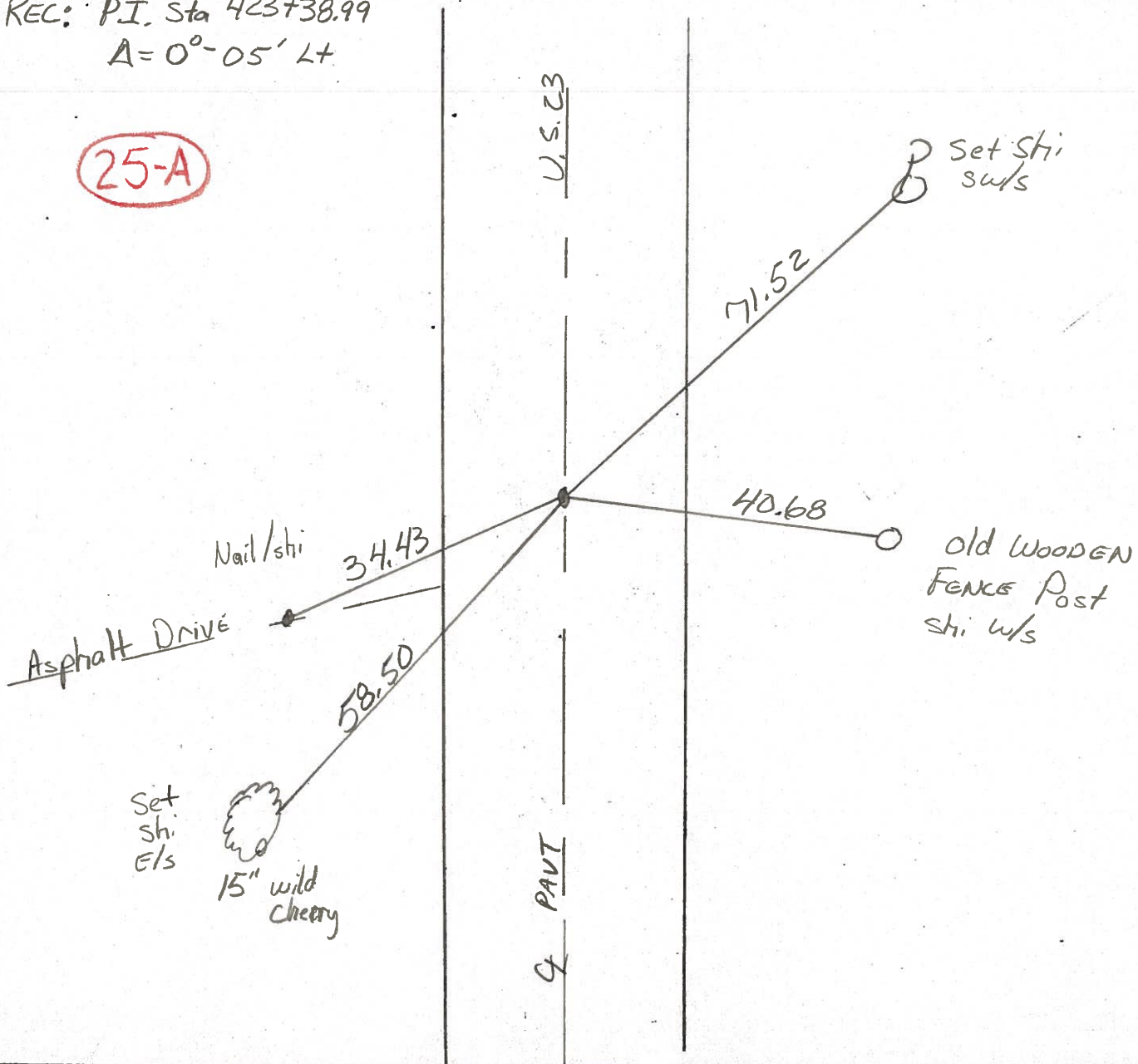
11.4 TO Lt EDGE PAVEMENT

S.L.M. 422+02



REC: P.I. Sta 423+38.99  
A = 0°-05' Lt

**25-A**



County Seneca S.R. U.S. 23

Date 6-23-81

Township Loudon

Weather clear

Section 30

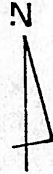
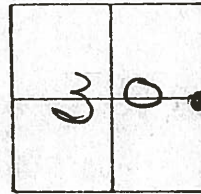
Temp. + 75°

T N, R E

Personnel Hoffman

Householder

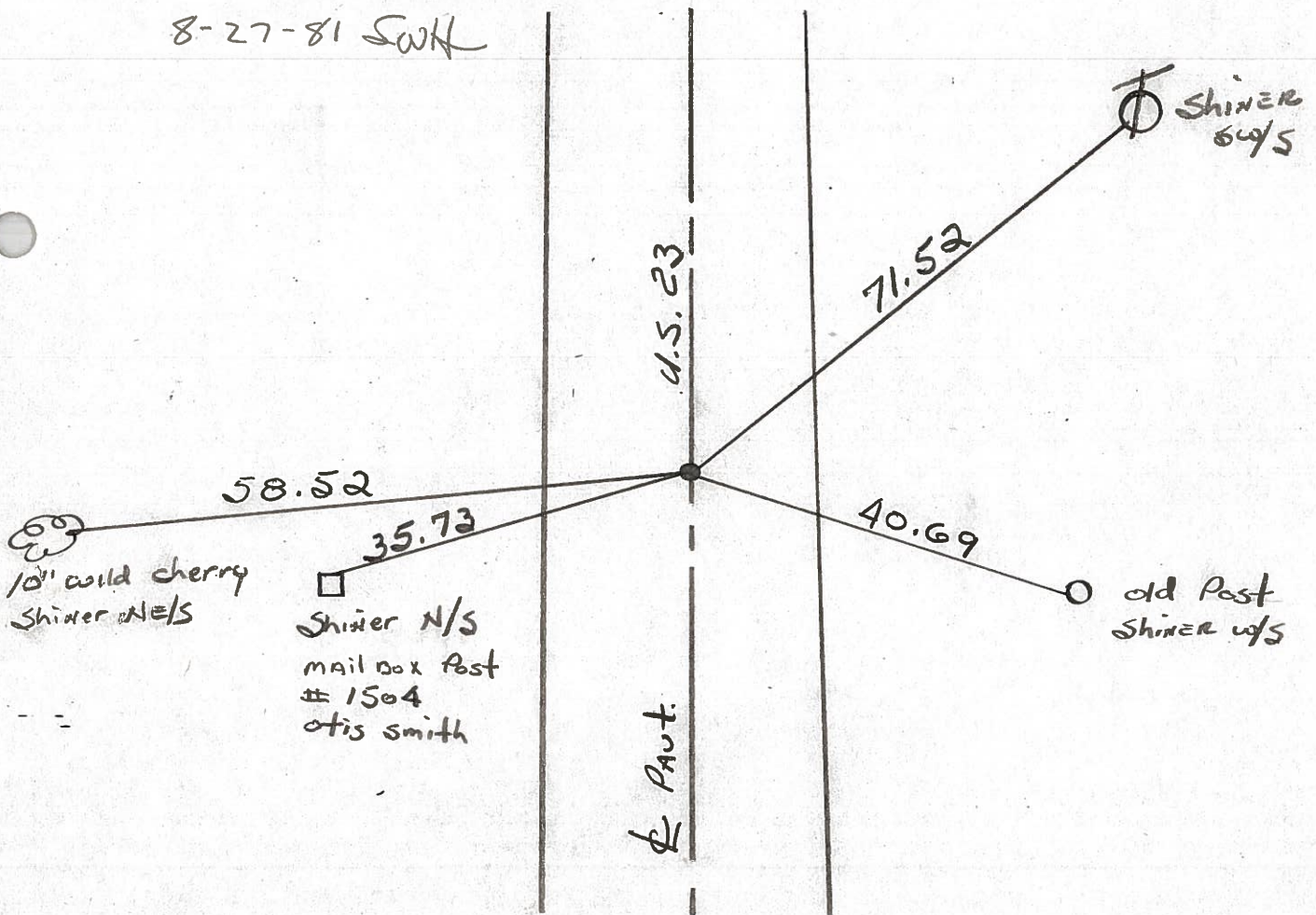
# 25-A



Fd. P.K. Nail/washer @ surface  
@ ctr PAUT.

project STA ± 422+29

SET SMALL R.R. SPK.  
8-27-81 SWH

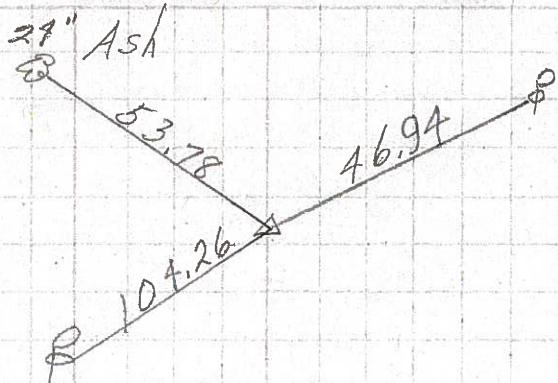


P. I. STA 423+38.99 - Δ = 0°-05' Lt ~ REC.

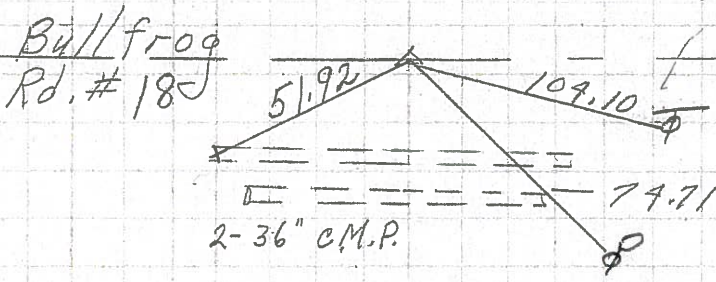
PERSONNEL	TITLE	PERSONNEL	TITLE	COUNTY	DATE	WEATHER	TEMP.
H. Schneider				Seneca	8-27-6	Fair	70°
E. Mosser				U.S. 23			
R. Barbour				SEC. Wyandot Co. line N.			
C. Potts							

DESCRIPTION Ties for Control Points LEFT CENTER LINE RIGHT JOB NO.

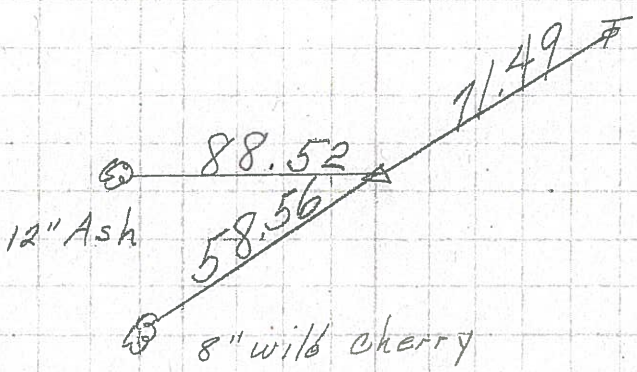
(27) X  
 P.I.  
 462+86.19  
 $\Delta = 0^\circ 13' R\angle$   
 P.K. Nail



8326  
 (26) X  
 P.I.  
 449+90.74  
 P.K. Nail



(25-A) X  
~~(25)~~  
 P.I.  
 423+38.99  
 $\Delta = 0^\circ 05' 24''$   
 P.K. Nail



(24) X  
 P.I.  
 396+88.69  
 $\Delta = 0^\circ 07' 8''$   
 P.K. Nail

