

O.D.O.T. DISTRICT 2 SURVEY OFFICE (USE ONLY)

PERSONNEL

REFERENCE NO. 28

SHEET 10 OF 17

NOTES O'DONNELL

DATE 5/12/21

ROUTE US 23

H.C. AUBLE

WEATHER SUNNY

COUNTY SENECA

R.C. NIESE

TEMP. 50°

TOWNSHIP LOUDON

DWG BY RHOADES

PID 85264

SECTION 19

T 2 N R 13 E

TYPE MONUMENT P.K./WASHER

ON SURFACE - ~~BELOW~~ ON

OFFSET Q PAVEMENT ON LT : RT

11.8' TO LT EDGE PAVEMENT

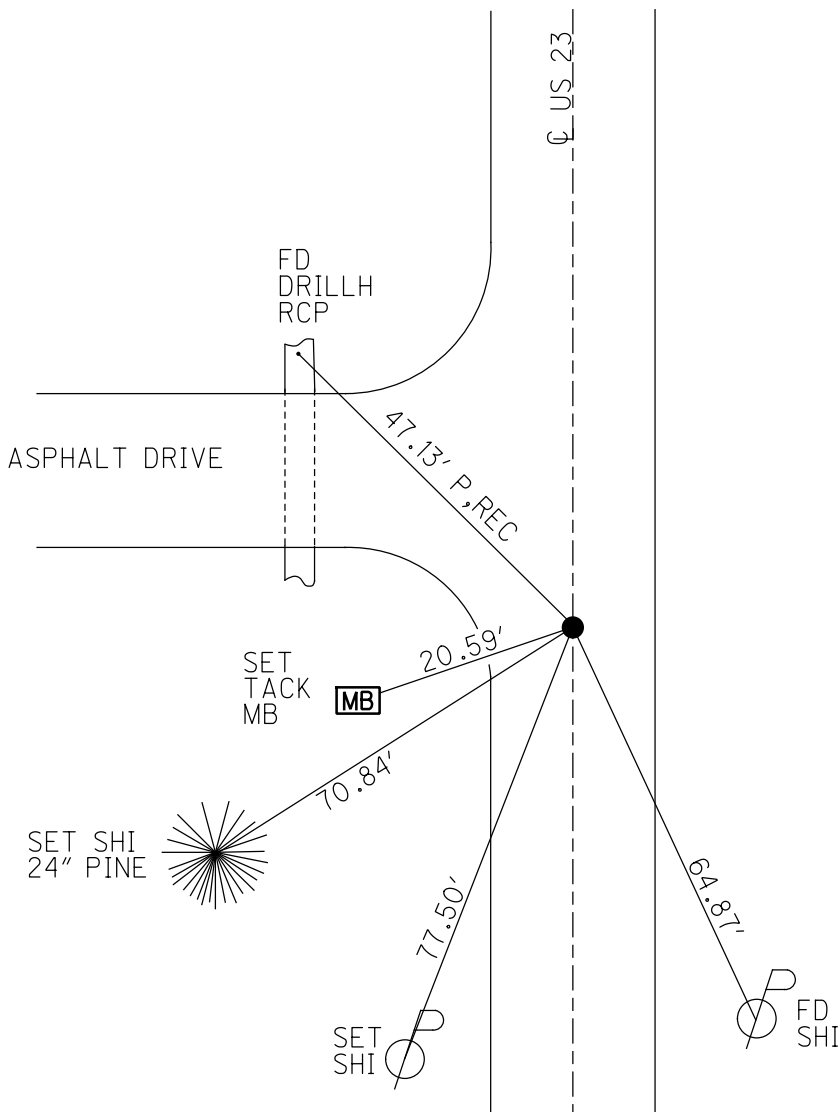
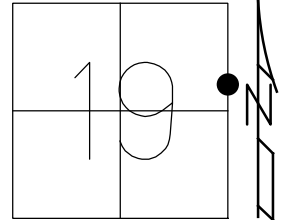
STATION: 476+86.19

HORZ.DATUM: NAD83 2011

GEOID: 2012A

GRID: NORTHING: 529305.904

EASTING: 1720102.357



RECORD: P.I.
 STA 476+86.19
 $\Delta = 0^\circ 3' \text{ LT}$
 FD SM.R.R.SPIKE
 7/24/89, CL
 SET P.K./WASHER
 11-3-1989, SWH
 FD P.K./WASHER
 10-26-06
 FD P.K./WASHER
 REF28
 10/26/18, JMR
 8/16/19, 5/12/21 JFO
 SET MAG/WASHER
 12/14/21, DSA

O.D.O.T. DISTRICT 2 SURVEY OFFICE (USE ONLY)

PERSONNEL

REFERENCE NO. 28

SHEET 10 OF 12

NOTES HOMAN

DATE 10/26/06

ROUTE US 23

H.C. HOMAN

WEATHER SUNNY

COUNTY SENECA

R.C. MIKLOVIC

TEMP. 35°

TOWNSHIP LOUDON

SECTION 19

DWG BY NASON

PID PT-SEN19

T 2 N R 13 E

TYPE MONUMENT SM.R.R.SPIKE

ON SURFACE - ~~BELOW~~ ON

OFFSET CL PAVEMENT ON LT : RT

11.8' TO LT EDGE PAVEMENT

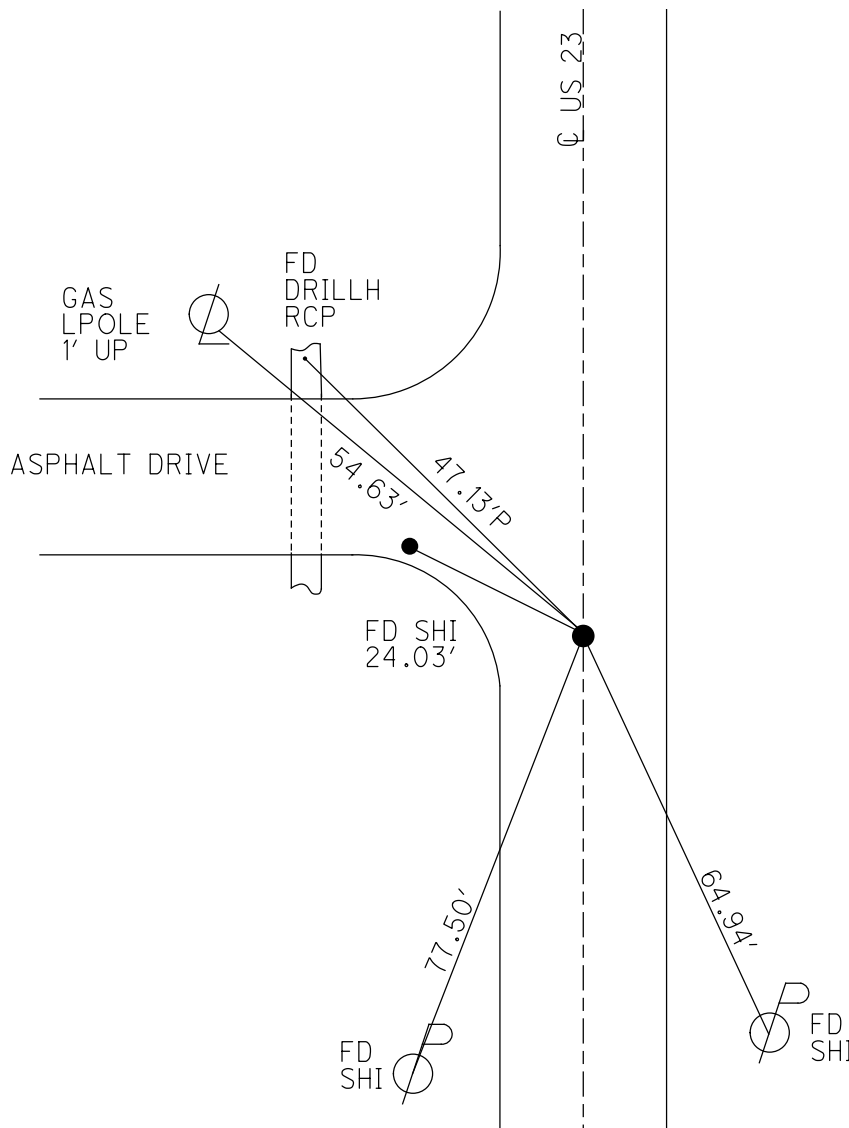
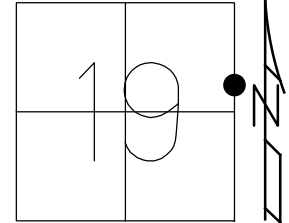
STATION: 476+86.19

HORIZ.DATUM: NAD83 2011

GEOID: 2012A

GRID: NORTHING: 529305.904

EASTING: 1720102.357

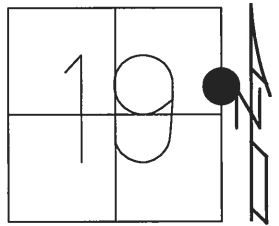


RECORD: P.I.
 STA 476+86.19
 $\Delta = 0^\circ 3' \text{ LT}$
 FD SM.R.R.SPIKE
 7/24/89, CL
 SET P.K./WASHER
 11-3-1989, SWH
 FD P.K./WASHER
 10-26-06
 FD P.K./WASHER
 REF28
 10/26/18, JMR
 8/16/19, JFO
 FD. P.K./W
 REF28
 10/26/18, JMR
 FD.
 8/16/19, JFO

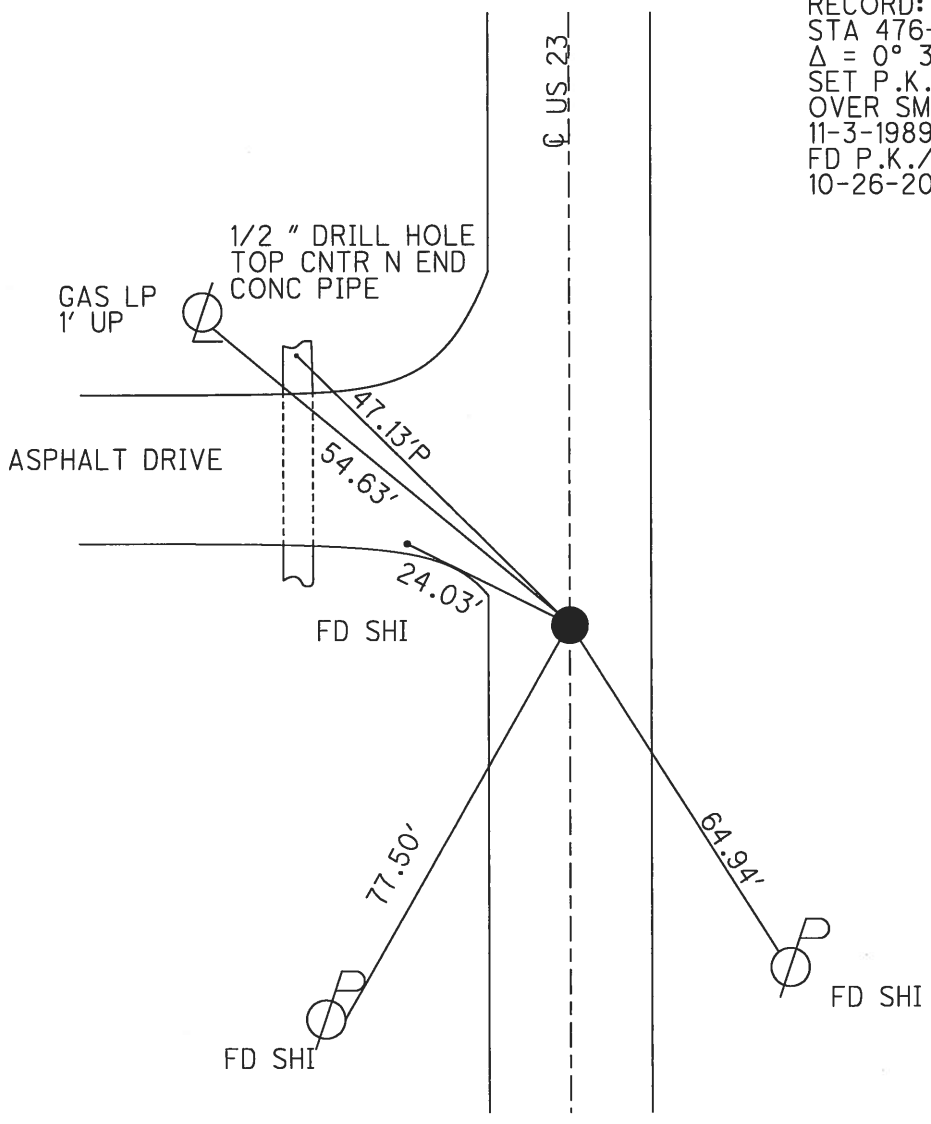
O.D.O.T. DISTRICT 2 SURVEY OFFICE (USE ONLY)

PERSONNEL	REFERENCE NO.	<u>28</u>	SHEET	<u>6</u>	OF	<u>8</u>
NOTES	<u>HOMAN</u>	DATE	<u>10-26-2006</u>	ROUTE	<u>US 23</u>	
H.C.	<u>HOMAN</u>	WEATHER	<u>SUNNY</u>	COUNTY	<u>SENECA</u>	
R.C.	<u>MIKLOVIC</u>	TEMP.	<u>35° F</u>	TOWNSHIP	<u>LOUDON</u>	
				SECTION	<u>19</u>	
				T	<u>2</u>	N
				R	<u>13</u>	E

TYPE MONUMENT SM. RSPK
 ON SURFACE - ~~BELOW~~ ON
~~LEFT~~ - Q PAV'T - ~~RIGHT~~ ON
11.8' TO LT. EDGE PAVEMENT
 S.L.M. 475+60
 GRID: NORTHING: _____ EASTING: _____



RECORD: P.I.
 STA 476+86.19
 $\Delta = 0^\circ 3' \text{ LT}$
 SET P.K./WASHER
 OVER SM RSPK
 11-3-1989, SWH
 FD P.K./WASHER
 10-26-2006

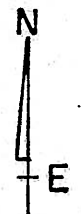
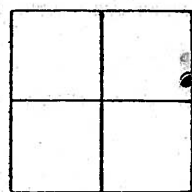


O.D.O.T. DISTRICT 2 SURVEY OFFICE

PERSONNEL Homan REFERENCE NO. 28 SHEET OF

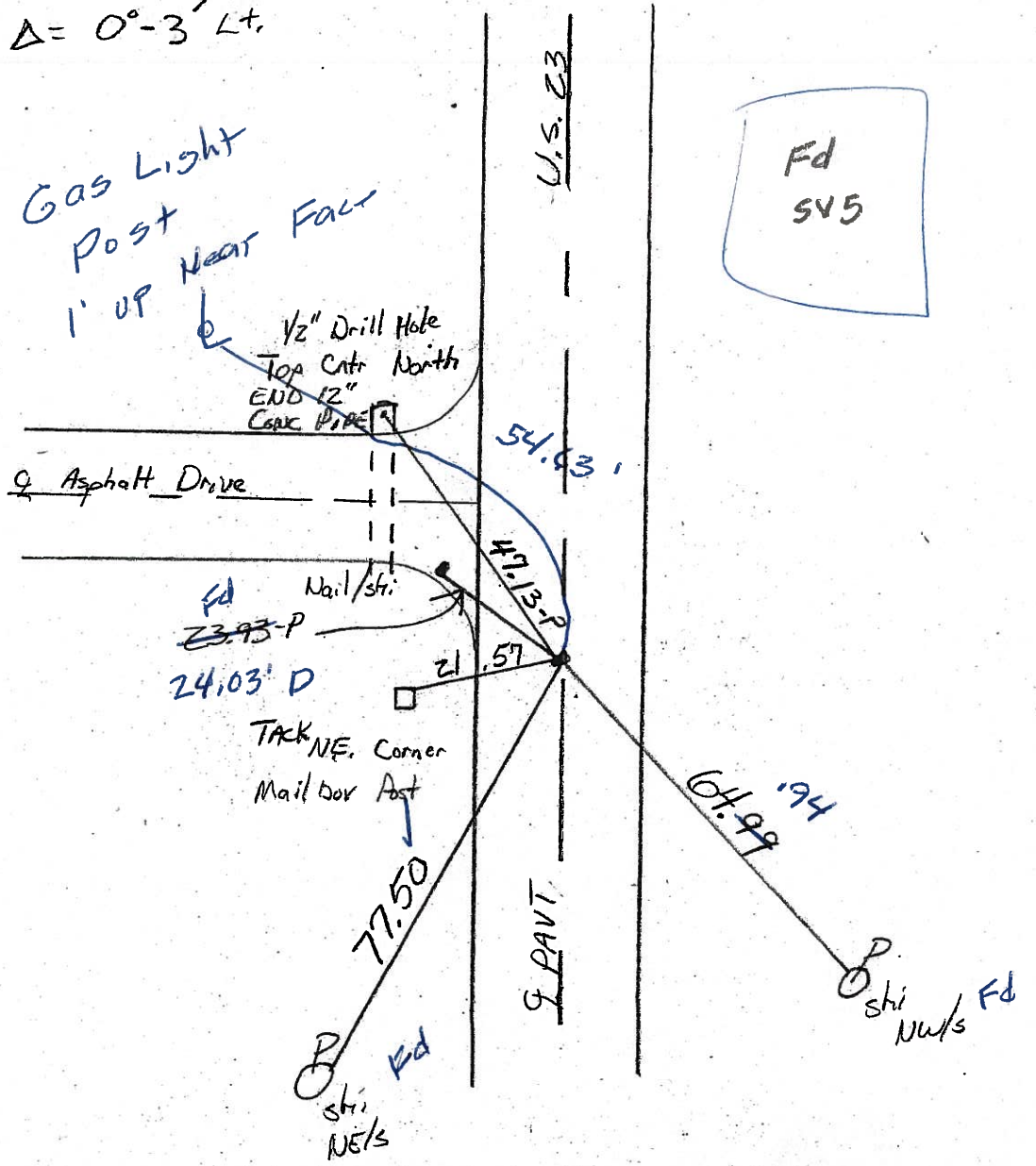
NOTES LOEHKE
 H.C. Hoffman Homan DATE 10-26-06
 R.C. SARATHISZ WEATHER Hot Hazy Sunny ROUTE U.S. 23
Miklovic TEMP. +65-35 COUNTY SENECA
 TOWNSHIP LADON
 SECTION 19
 T R

TYPE MONUMENT Sm. R.R. Spike PK Nail Set P.K./WASHER
 ON SURFACE - BELOW Yes ✓ 11-3-89 SWN
~~LEFT~~ - PAV'T. - RIGHT YES ✓
11.8 TO Lt EDGE PAVEMENT
 S.L.M. 475+60



REC. P.I. Sta 476+80.19
 $\Delta = 0^{\circ}-3' Lt.$

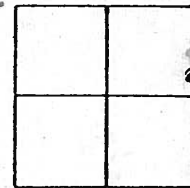
Gas Light Post
 1' up near Face



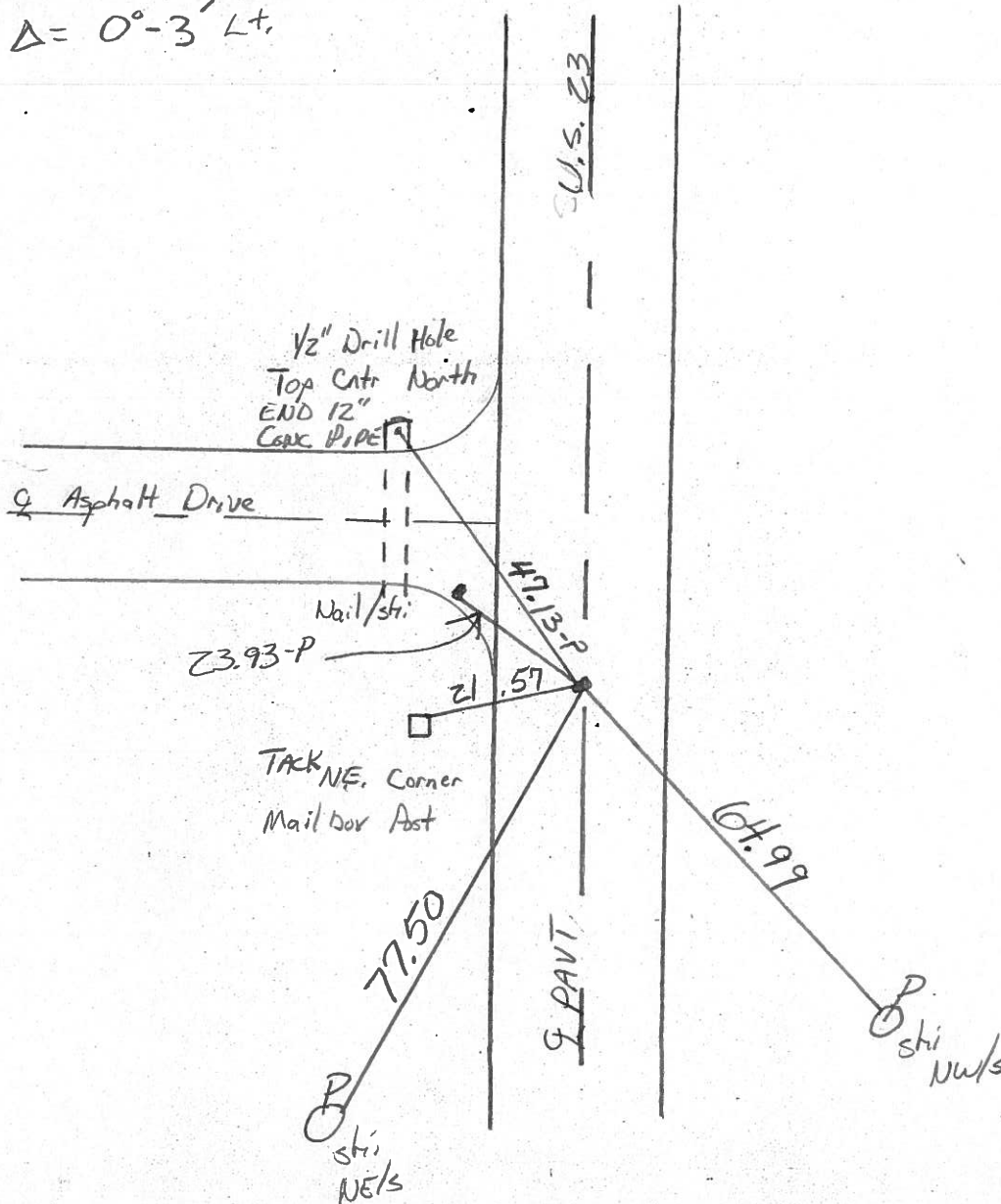
O.D.O.T. DISTRICT 2 SURVEY OFFICE

PERSONNEL _____ **REFERENCE NO.** 28 **SHEET** _____ **OF** _____
NOTES LOEHRKE
H.C. FLOPFMAN **DATE** 7-24-89 **ROUTE** U.S. 23
R.C. BARNHISEL **WEATHER** HOT - HAZY **COUNTY** SENECA
TEMP. +85 **TOWNSHIP** LONDON
SECTION 19
T _____ **R** _____

TYPE MONUMENT Sm. R.R. SPIKE Set P.K./WASHER
ON SURFACE - BELOW Yes 11-3-89 SWM
LEFT - & PAV'T. - RIGHT YES
IL. B TO Lt EDGE PAVEMENT
S.L.M. 475 + 60



Rec. P.I. Sta 476 + 80.19
 $\Delta = 0^{\circ} - 3' \text{ Lt.}$



County Seneca S.R. 4.5.23

Township London

Section 19

T N, R E

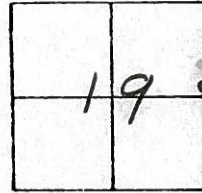
Personnel Hoffman
Householder

#28

Date 6-24-81

Weather cloudy

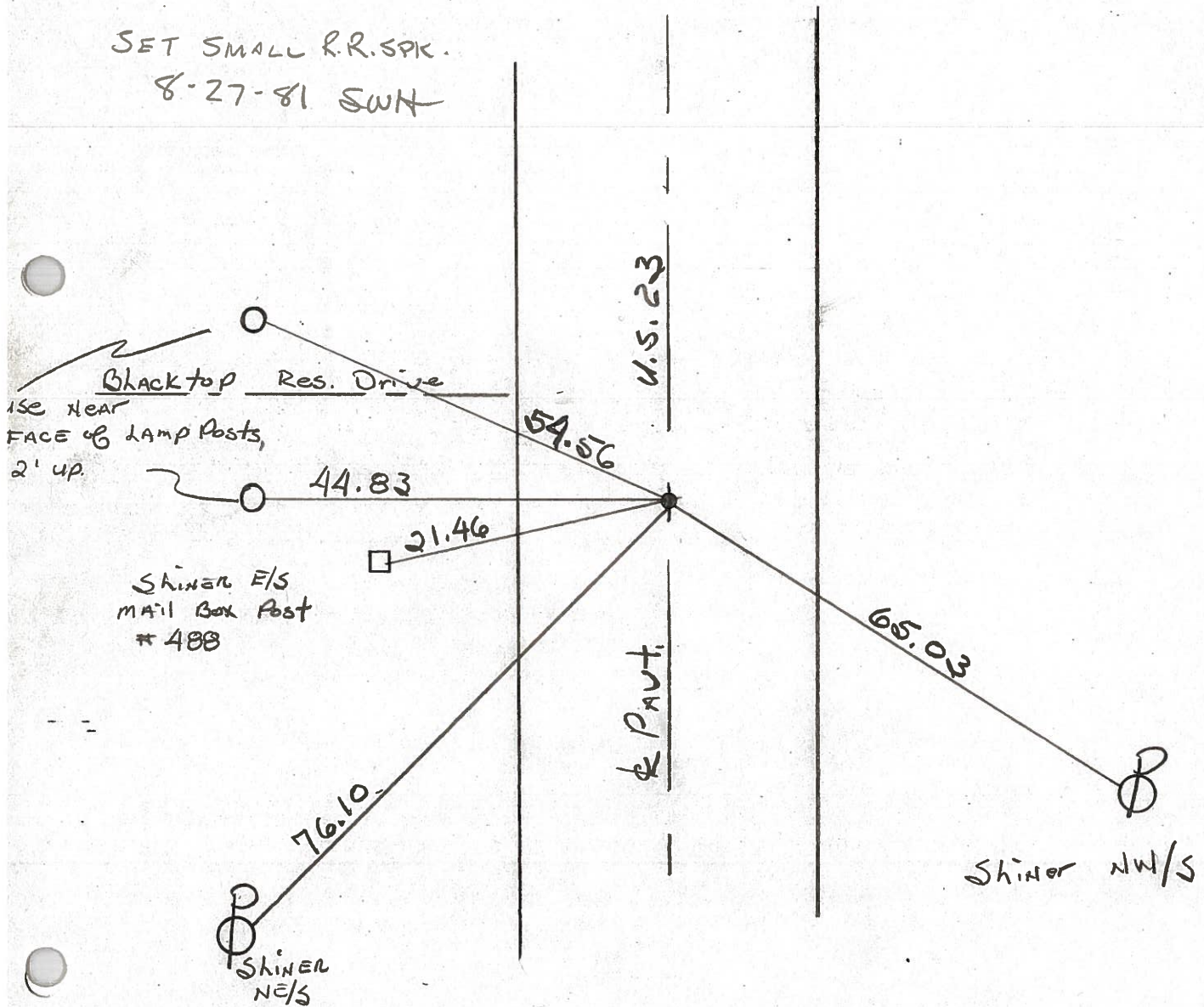
Temp. +75°



Fd. P.K. Nail/washer @ surface
@ ctr. of PAVT.

Project STA ± 475+92

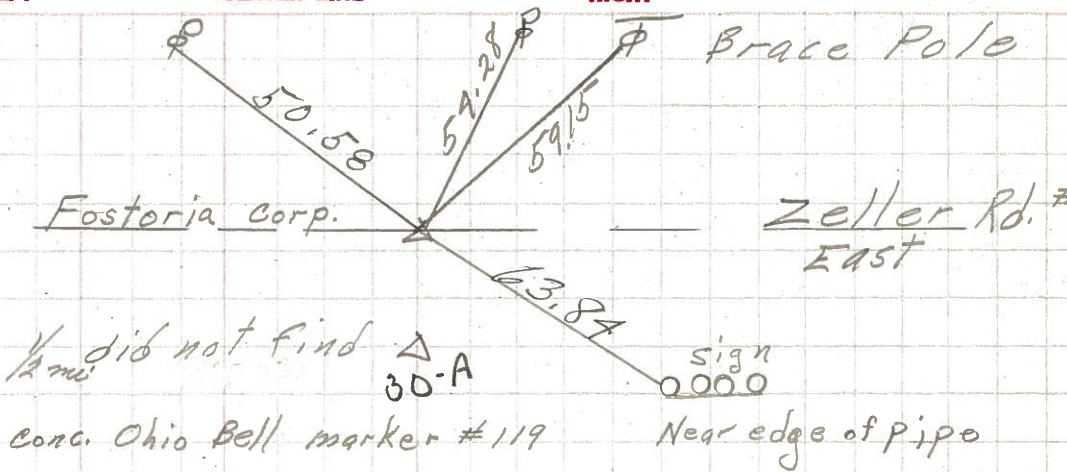
SET SMALL R.R. SPK.
8-27-81 SWH



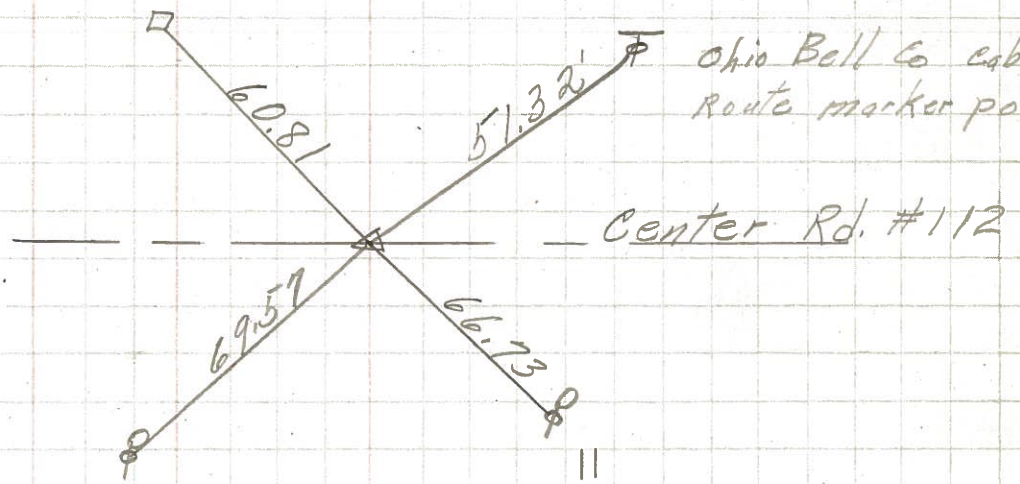
P.I. STA. 476+86.19 - Δ = 0°-03' Lt. ~ Rec.

PERSONNEL	TITLE	PERSONNEL	TITLE	COUNTY	<u>Seneca</u>	DATE	<u>8-27-6</u>
<u>Schneider</u>				S. R.	<u>U.S. 23</u>	WEATHER	<u>Fair</u>
<u>Mosser</u>				SEC.	<u>Wyandot Co. Line No.</u>	TEMP.	<u>75°</u>
<u>Barbour</u>				DESCRIPTION <u>Ties for Control Points</u>			
<u>Potts</u>				JOB NO. _____			

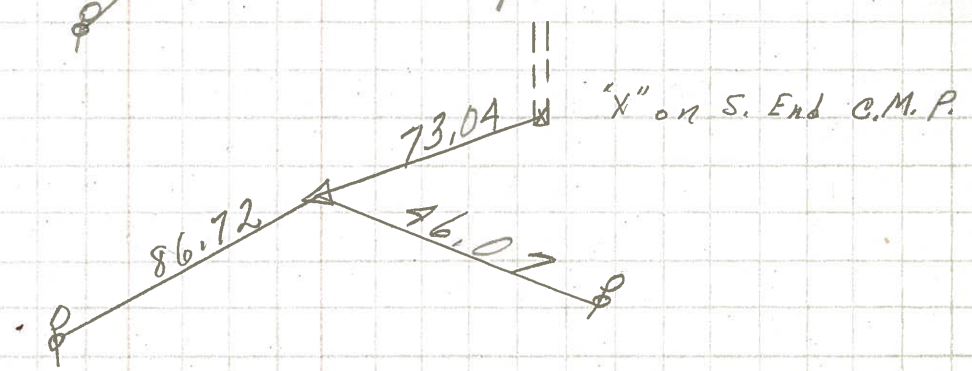
(31)
 P.I.
 555+89.19
 $\Delta = 0^{\circ} 06' \text{ Rt.}$
 P.K. Nail



(30) X
 P.I.
 502+87.19
 $\Delta = 0^{\circ} 09' \text{ Rt.}$
 P.K. Nail



(29) X
 P.I.
 489+86.19
 $\Delta = 0^{\circ} 20' \text{ Rt.}$
 P.K. Nail



(28) X
 P.I.
 476+86.19
 $\Delta = 0^{\circ} 03' \text{ Lt.}$
 P.K. Nail

