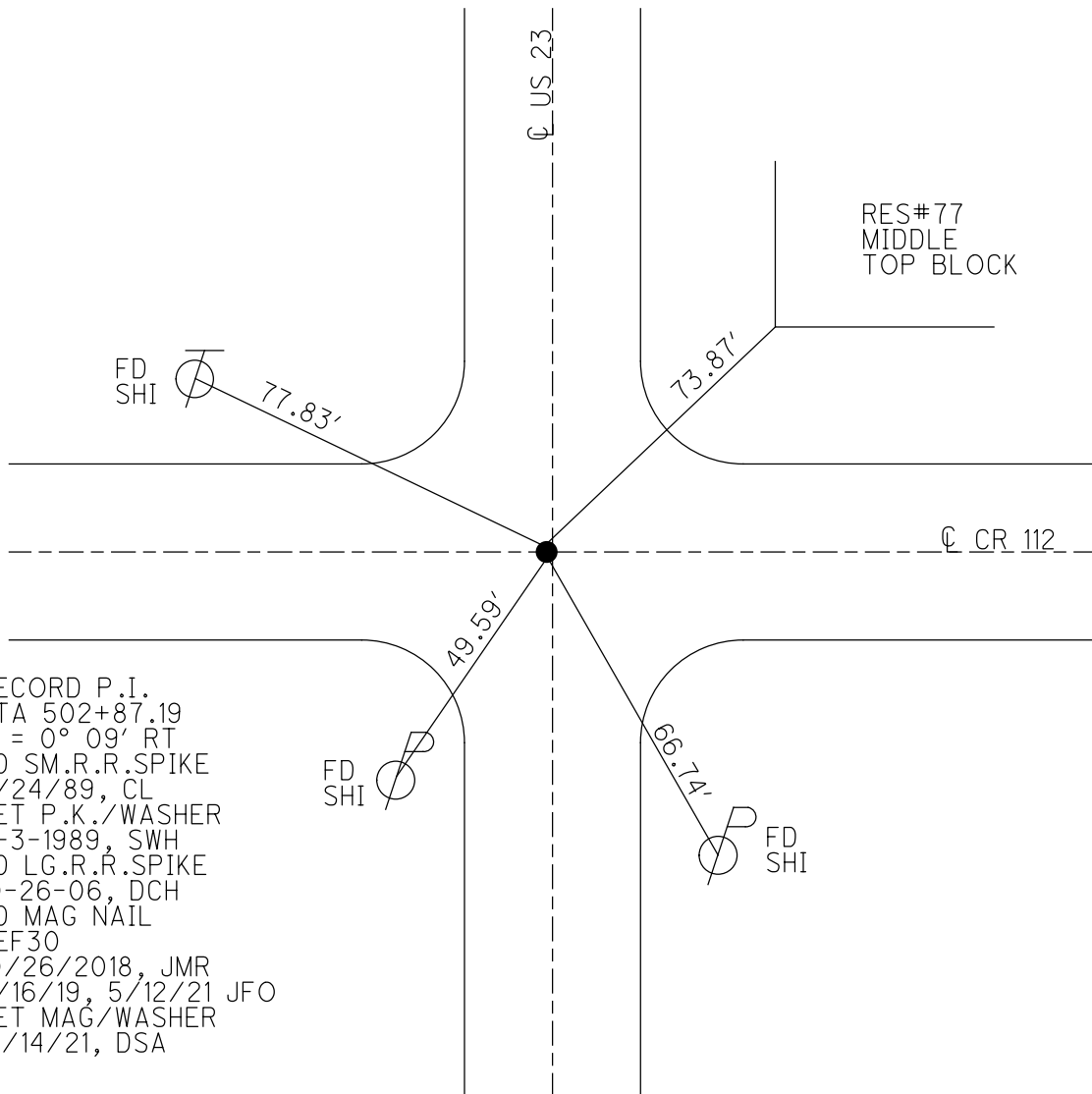
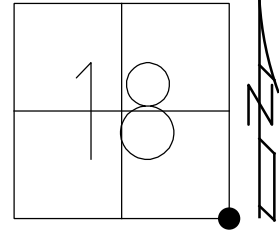


O.D.O.T. DISTRICT 2 SURVEY OFFICE (USE ONLY)

PERSONNEL \_\_\_\_\_ REFERENCE NO. 30 SHEET 12 OF 17  
 NOTES O'DONNELL DATE 5/12/21 ROUTE US 23  
 H.C. AUBLE WEATHER SUNNY COUNTY SENECA  
 R.C. NIESE TEMP. 58° TOWNSHIP LOUDON  
 DWG BY RHOADES PID 85264 SECTION 18  
 T 2 N R 13 E

TYPE MONUMENT MAG NAIL  
 ON SURFACE - ~~BELOW~~ ON  
 OFFSET Q PAVEMENT 0.5' LT : RT  
- TO - EDGE PAVEMENT  
 STATION: 501+70.95

HORIZ.DATUM: NAD83 2011 GEOID: 2012A  
 GRID: NORTHING: 531909.693 EASTING: 1720116.672



O.D.O.T. DISTRICT 2 SURVEY OFFICE (USE ONLY)

PERSONNEL \_\_\_\_\_

REFERENCE NO. 30

SHEET 12 OF 12

NOTES ELKHECHEN

DATE 10/30/18

ROUTE US 23

H.C. LEU

WEATHER BREEZY

COUNTY SENECA

R.C. MILLER

TEMP. 53°

TOWNSHIP LOUDON

DWG BY NASON

PID PT-SEN19

SECTION 18

T 2 N R 13 E

TYPE MONUMENT MAG NAIL

ON SURFACE - ~~BELOW~~ ON

OFFSET ☉ PAVEMENT 0.5' LT : ~~RT~~

- TO - EDGE PAVEMENT

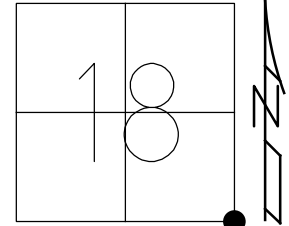
STATION: 501+70 9.5

HORZ. DATUM: NAD83 2011

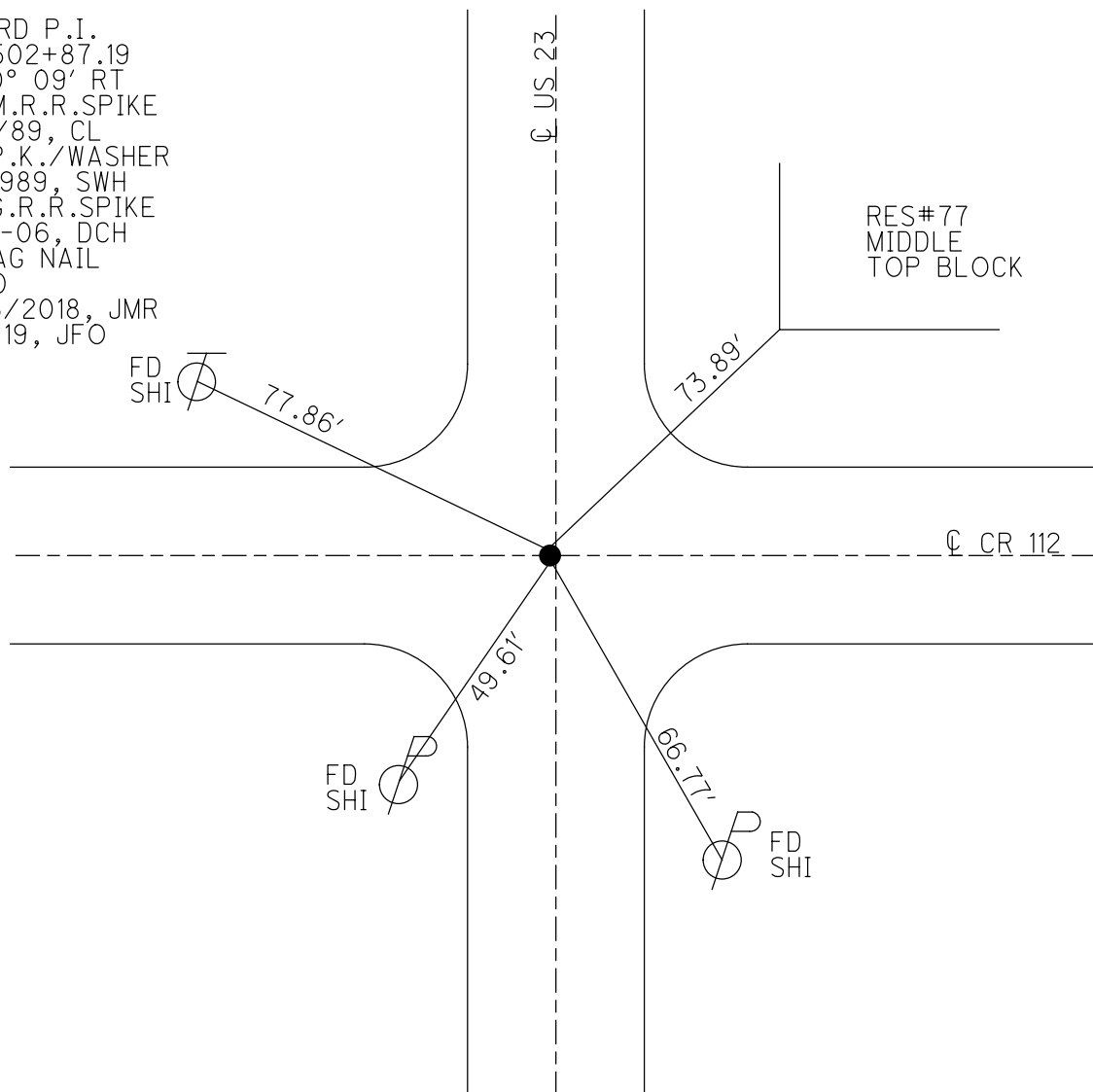
GEOID: 2012A

GRID: NORTHING: 531909.693

EASTING: 1720116.672



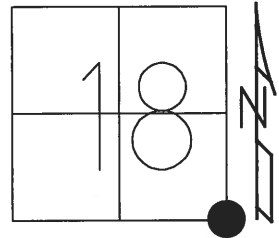
RECORD P.I.  
 STA 502+87.19  
 $\Delta = 0^\circ 09' RT$   
 FD SM.R.R.SPIKE  
 7/24/89, CL  
 SET P.K./WASHER  
 11-3-1989, SWH  
 FD LG.R.R.SPIKE  
 10-26-06, DCH  
 FD MAG NAIL  
 REF30  
 10/26/2018, JMR  
 8/16/19, JFO



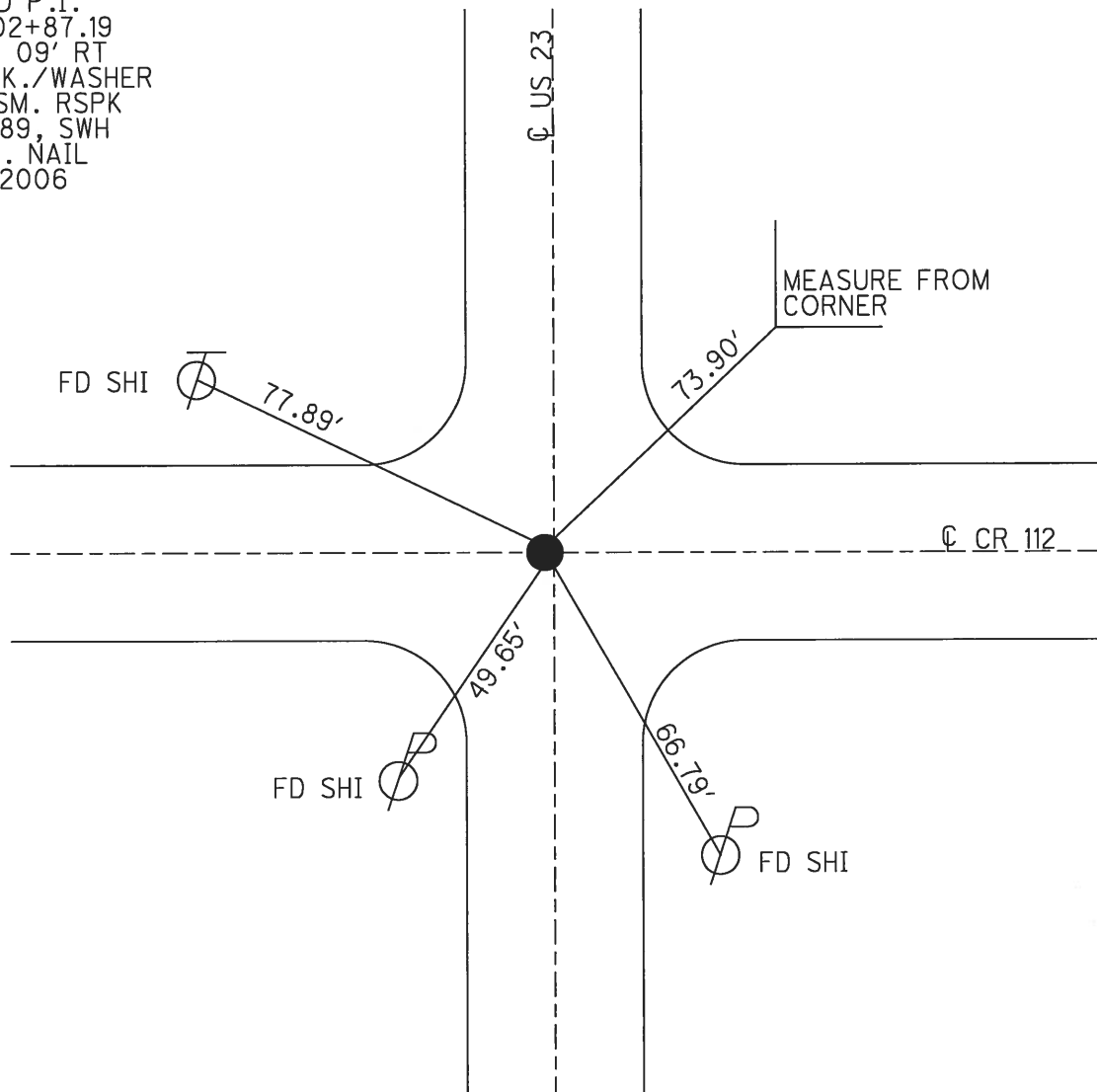
O.D.O.T. DISTRICT 2 SURVEY OFFICE (USE ONLY)

PERSONNEL	REFERENCE NO.	30	SHEET	8	OF	8
NOTES	HOMAN	DATE	10-26-2006	ROUTE	US 23	
H.C.	HOMAN	WEATHER	SUNNY	COUNTY	SENECA	
R.C.	MIKLOVIC	TEMP.	35° F	TOWNSHIP	LOUDON	
				SECTION	18	
				T	2	N
				R	13	E

TYPE MONUMENT LG. RSPK  
 ON SURFACE - ~~BELOW~~ ON  
 LEFT - CL PAV'T - ~~RIGHT~~ 0.5'  
TO EDGE PAVEMENT  
 S.L.M. 501+70  
 GRID: NORTHING: \_\_\_\_\_ EASTING: \_\_\_\_\_



RECORD P.I.  
 STA 502+87.19  
 $\Delta = 0^\circ 09' RT$   
 SET P.K./WASHER  
 OVER SM. RSPK  
 11-3-1989, SWH  
 FD P.K. NAIL  
 10-26-2006

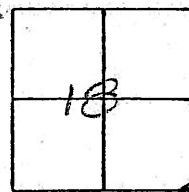


# O.D.O.T. DISTRICT 2 SURVEY OFFICE

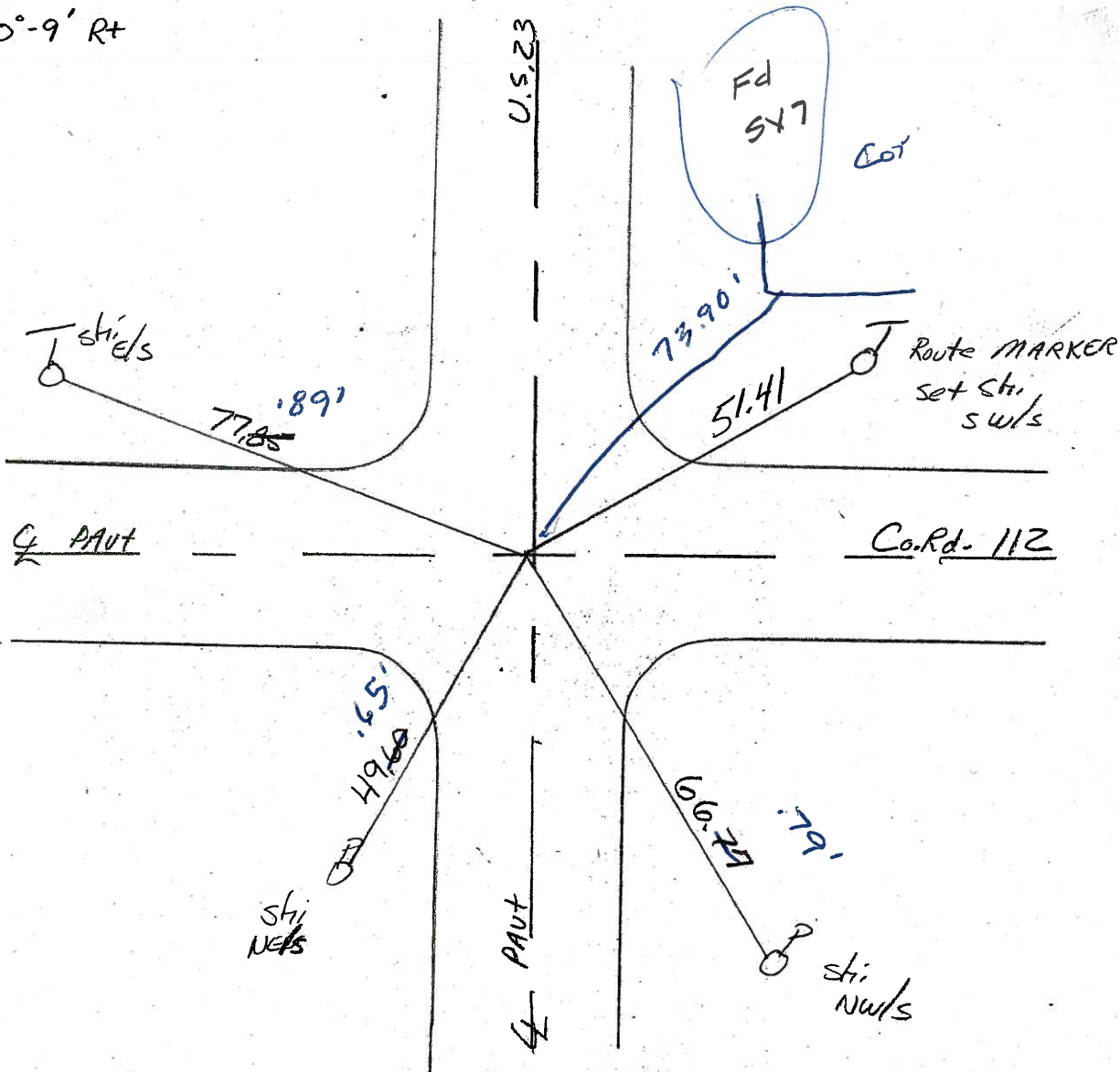
PERSONNEL Homan REFERENCE NO. 30 SHEET      OF       
 NOTES LOCHKE  
 H.C. Hoffman Homan DATE 7-24-27 10-26-04  
 R.G. BARNHISEL WEATHER Hot Humid Sunny ROUTE U.S. 23  
Miklovic TEMP. +85 35° COUNTY SENECA  
 TOWNSHIP LOWSON  
 SECTION 18  
 T      R     

TYPE MONUMENT Log RR. Spike PK  
 ON SURFACE - BELOW Yes  
 LEFT - C PAVT. - RIGHT 0.5 Lt  
     TO      EDGE PAVEMENT  
 S.L.M. 501+70

Set P.K./WASHER  
 10-3-89 SWA



Rec. P.I Sta 502+87.19  
 $\Delta = 0^{\circ}-9' \text{ Rt}$



# O.D.O.T. DISTRICT 2 SURVEY OFFICE

PERSONNEL \_\_\_\_\_

REFERENCE NO. 30

SHEET \_\_\_\_\_ OF \_\_\_\_\_

NOTES LOHRKE

H.C. Hoffman

R.C. BARNHISEL

DATE 7-24-87

WEATHER Hot Humid

TEMP. +85

ROUTE U.S. 23

COUNTY SENECA

TOWNSHIP LOUDON

SECTION 18

T \_\_\_\_\_ R \_\_\_\_\_

TYPE MONUMENT Lo RR. Spike

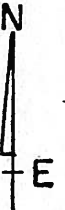
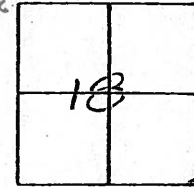
ON SURFACE - BELOW Yes

LEFT- & PAV'T. - RIGHT 0.5 Lt

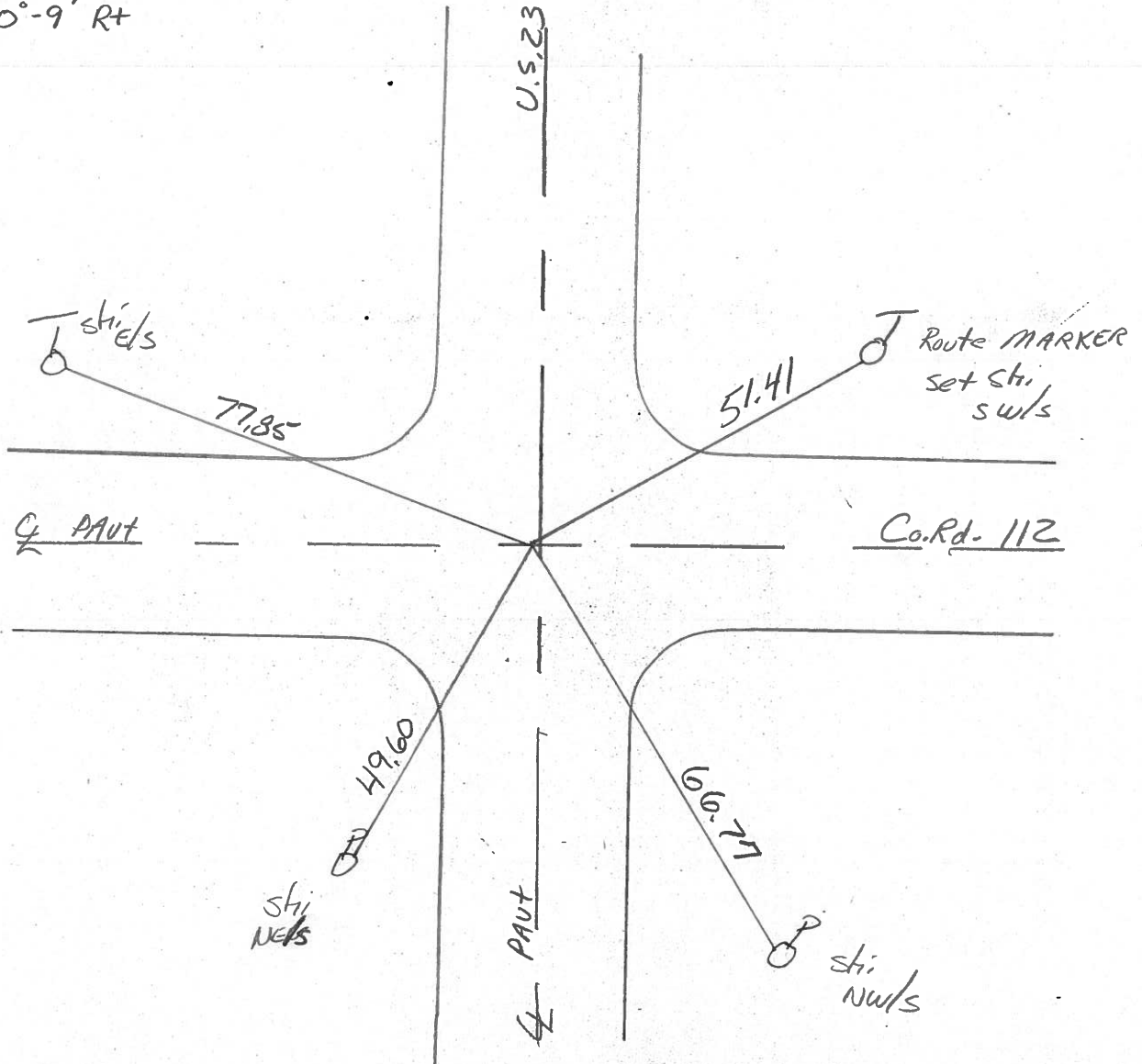
TO \_\_\_\_\_ EDGE PAVEMENT

S.L.M. 501+70

Set PK/WASHER  
10-3-89 SWA



Rec. P.I. Sta 502+87.19  
 $\Delta = 0^{\circ}-9' \text{ Rt}$





County Seneca S.R. U.S. 23

Township Loudon

Section 18

T. N, R. E

Personnel HOFFMAN

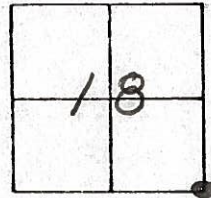
Householder

#30

Date 6-24-81

Weather cloudy

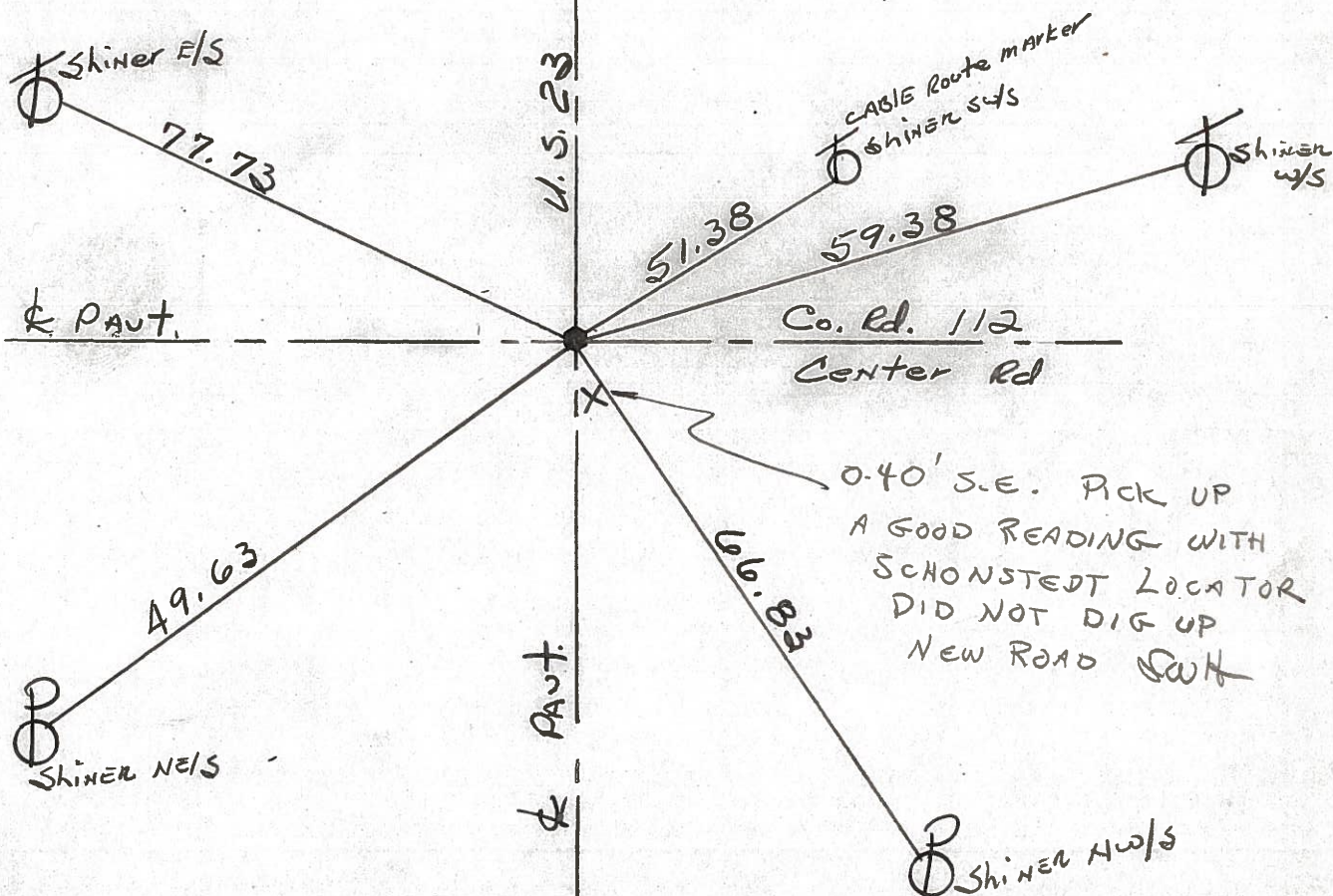
Temp. +75°



Fd. R.R. SPK @ SURFACE  
CTR. OF PAUTS.

PROJECT STA ± 502+05

SET. R.R. SPK. 8-27-81  
CUT "T" ON TOP



P.I. STA. 502 + 87.19 - Δ = 0° - 09' - RT ~ REC.



PERSONNEL	TITLE	PERSONNEL	TITLE	COUNTY	DATE	WEATHER
Schneider				Seneca	8-27-6	Fair
Mosser				S. R. U.S. 23		
Barbour				SEC. Wyandot Co. Line No.		TEMP. 75°
Potts						

DESCRIPTION Ties for Control Points JOB NO. \_\_\_\_\_

