

O.D.O.T. DISTRICT 2 SURVEY OFFICE (USE ONLY)

PERSONNEL

REFERENCE NO. 30 B

SHEET 14 OF 17

NOTES O'DONNELL

DATE 5/12/21

ROUTE US 23

H.C. AUBLE

WEATHER SUNNY

COUNTY SENECA

R.C. NIESE

TEMP. 58°

TOWNSHIP LOUDON

SECTION 18

DWG BY RHOADES

PID 85264

T 2 N R 13 E

TYPE MONUMENT LG.R.R.SPIKE

~~ON SURFACE~~ - BELOW 4"

OFFSET Q PAVEMENT ON LT : RT

11.5' TO LT EDGE PAVEMENT

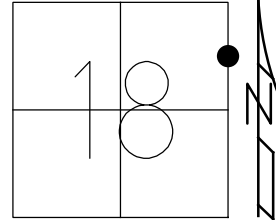
STATION: 541+55

HORZ.DATUM: NAD83 2011

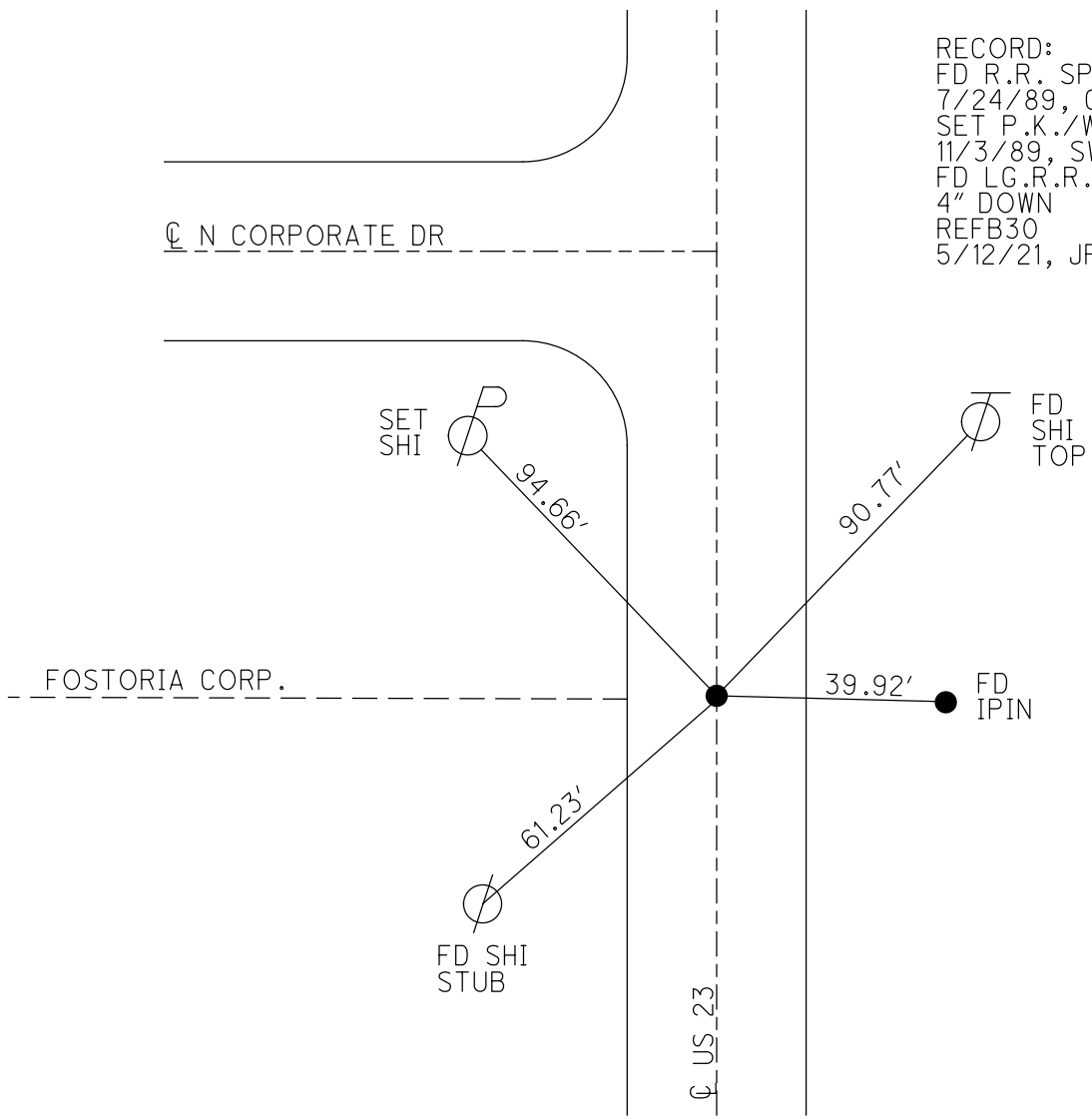
GEOID: NAVD88 2012A

GRID: NORTHING: 535885.282

EASTING: 1720137.224



RECORD:  
 FD R.R. SPIKE  
 7/24/89, CAL  
 SET P.K./WASHER  
 11/3/89, SWN  
 FD LG.R.R.SPIKE  
 4" DOWN  
 REFB30  
 5/12/21, JFO



O.D.O.T. DISTRICT 2 SURVEY OFFICE (USE ONLY)

PERSONNEL

REFERENCE NO. 30 B

SHEET 14 OF 17

NOTES LOEHRKE

DATE 7/24/89

ROUTE US 23

H.C. HOFFMAN

WEATHER HOT/HUMID

COUNTY SENECA

R.C. BARNHISEL

TEMP. 87°

TOWNSHIP LOUDON

SECTION 18

DWG BY NIESE PID \_\_\_\_\_

T 2 N R 13 E

TYPE MONUMENT R.R. SPIKE

ON SURFACE - ~~BELOW~~ ON

OFFSET Q PAVEMENT ON LT : RT

11.5' TO LT EDGE PAVEMENT

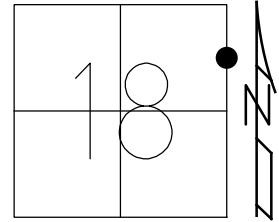
STATION: 541+55

HORZ. DATUM: \_\_\_\_\_

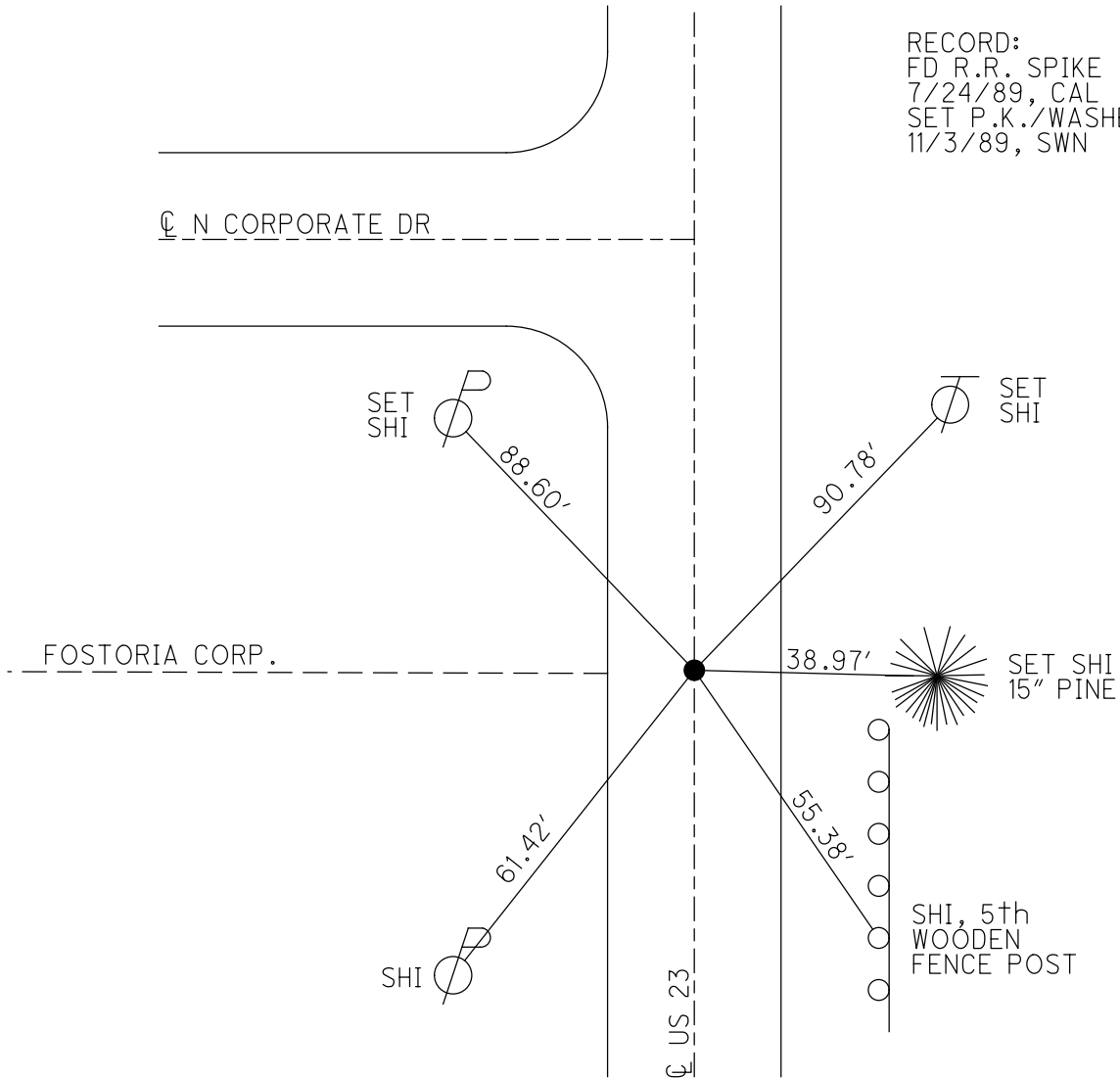
GEOID: \_\_\_\_\_

GRID: NORTHING: \_\_\_\_\_

EASTING: \_\_\_\_\_



RECORD:  
FD R.R. SPIKE  
7/24/89, CAL  
SET P.K./WASHER  
11/3/89, SWN



# O.D.O.T. DISTRICT 2 SURVEY OFFICE

PERSONNEL \_\_\_\_\_

REFERENCE NO. 30-B

SHEET \_\_\_\_\_ OF \_\_\_\_\_

NOTES LOHRKE

H.C. Hoffman

R.C. BARWISSEL

DATE 7-24-89

WEATHER Hot HUMID

TEMP. 78.7

ROUTE U.S. 23

COUNTY SENECA

TOWNSHIP Lowland

SECTION 18

T \_\_\_\_\_ R \_\_\_\_\_

TYPE MONUMENT R.P. Spike

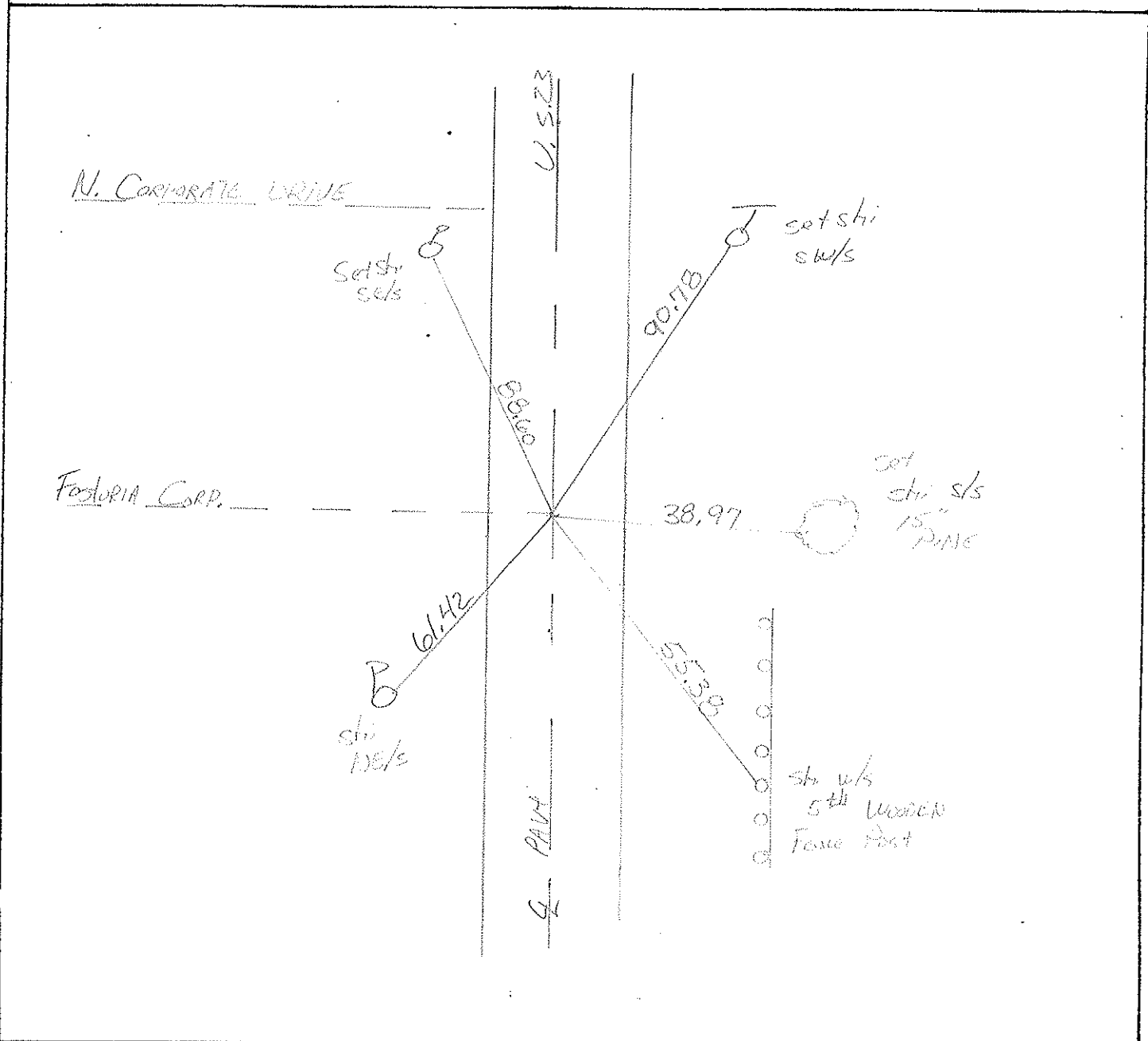
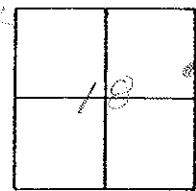
ON SURFACE - BELOW Yes

LEFT -  $\odot$  PAV'T. - RIGHT Yes

11.5 TO Lt EDGE PAVEMENT

S.L.M. 541+35

*Set PK/WOODEN  
11-3-89 SW/S*



County Seneca S. R. - U.S. 23

Date 6-24-81

Township London

Weather cloudy

Section 18

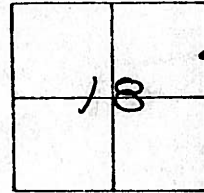
Temp. +75°

T. N, R. E

Personnel Hoffman

Householder

#30-B



Fd. R.R. SPK. @ surface  
@ ctr. of part.

PROJECT STA ± 541+94

SET R.R. SPK.

CUT "+" ON TOP

8-27-81 SWH

