

O.D.O.T. DISTRICT 2 SURVEY OFFICE (USE ONLY)

PERSONNEL

REFERENCE NO. 30 C

SHEET 15 OF 17

NOTES O'DONNELL

DATE 5/12/21

ROUTE US 23

H.C. AUBLE

WEATHER SUNNY

COUNTY SENECA

R.C. NIESE

TEMP. 58°

TOWNSHIP LOUDON

SECTION 18

DWG BY RHOADES

PID 85264

T 2 N R 13 E

TYPE MONUMENT MAG/WASHER

ON SURFACE - ~~BELOW~~ ON

OFFSET Q PAVEMENT ON LT : RT

11.0' TO RT EDGE PAVEMENT

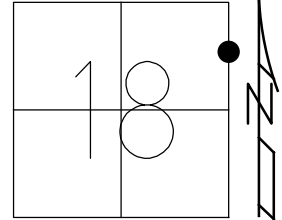
STATION: 542+74

HORIZ.DATUM: NAD83 2011

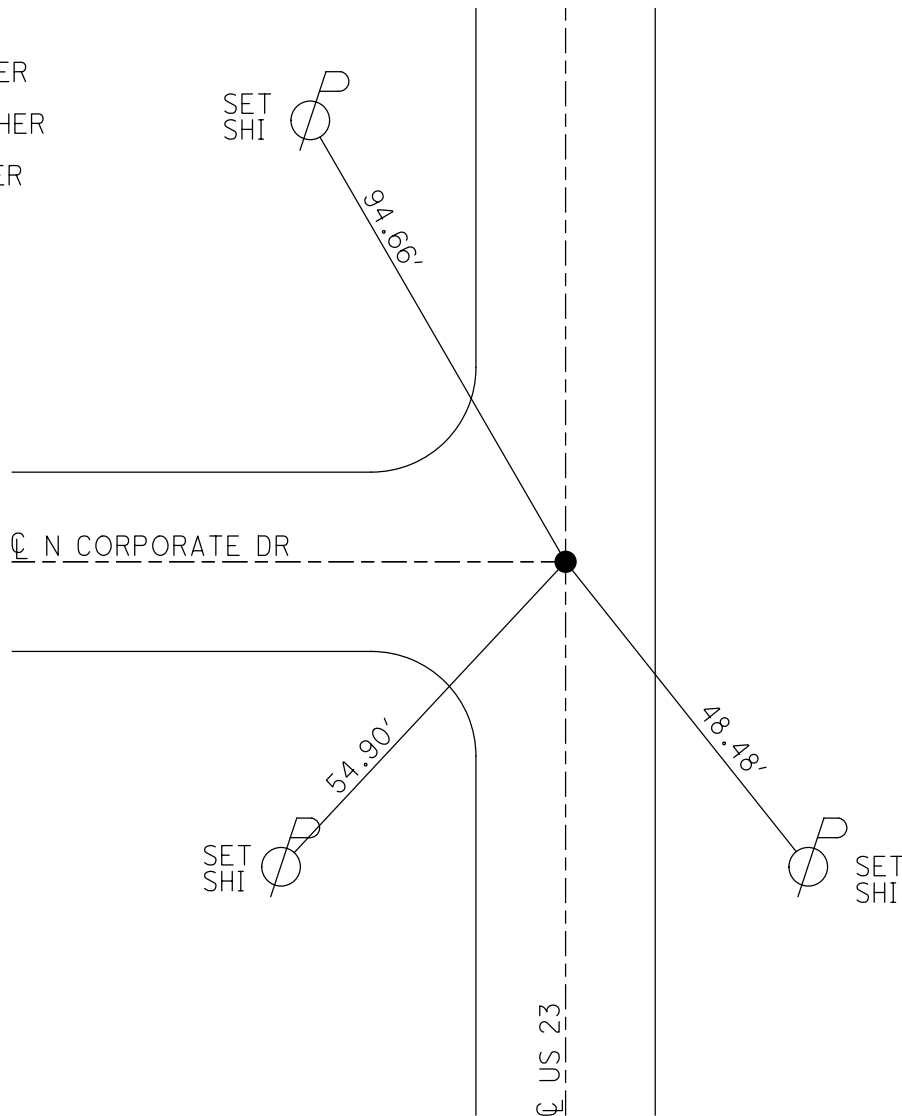
GEOID: NAVD88 2012A

GRID: NORTHING: 536004.974

EASTING: 1720137.804



RECORD:
FD P.K./WASHER
7/24/89, CAL
SET P.K./WASHER
11/3/89, SWN
FD MAG/WASHER
REFC30
1/7/20, JFO



O.D.O.T. DISTRICT 2 SURVEY OFFICE (USE ONLY)

PERSONNEL _____

REFERENCE NO. 30 C

SHEET 15 OF 17

NOTES LOEHRKE

DATE 7/24/89

ROUTE US 23

H.C. HOFFMAN

WEATHER HOT/HUMID

COUNTY SENECA

R.C. BARNHISEL

TEMP. 88°

TOWNSHIP LOUDON

SECTION 18

DWG BY NIESE PID _____

T 2 N R 13 E

TYPE MONUMENT P.K./WASHER

ON SURFACE - ~~BELOW~~ ON

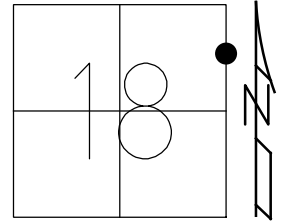
OFFSET ☐ PAVEMENT ON LT : RT

11.0' TO RT EDGE PAVEMENT

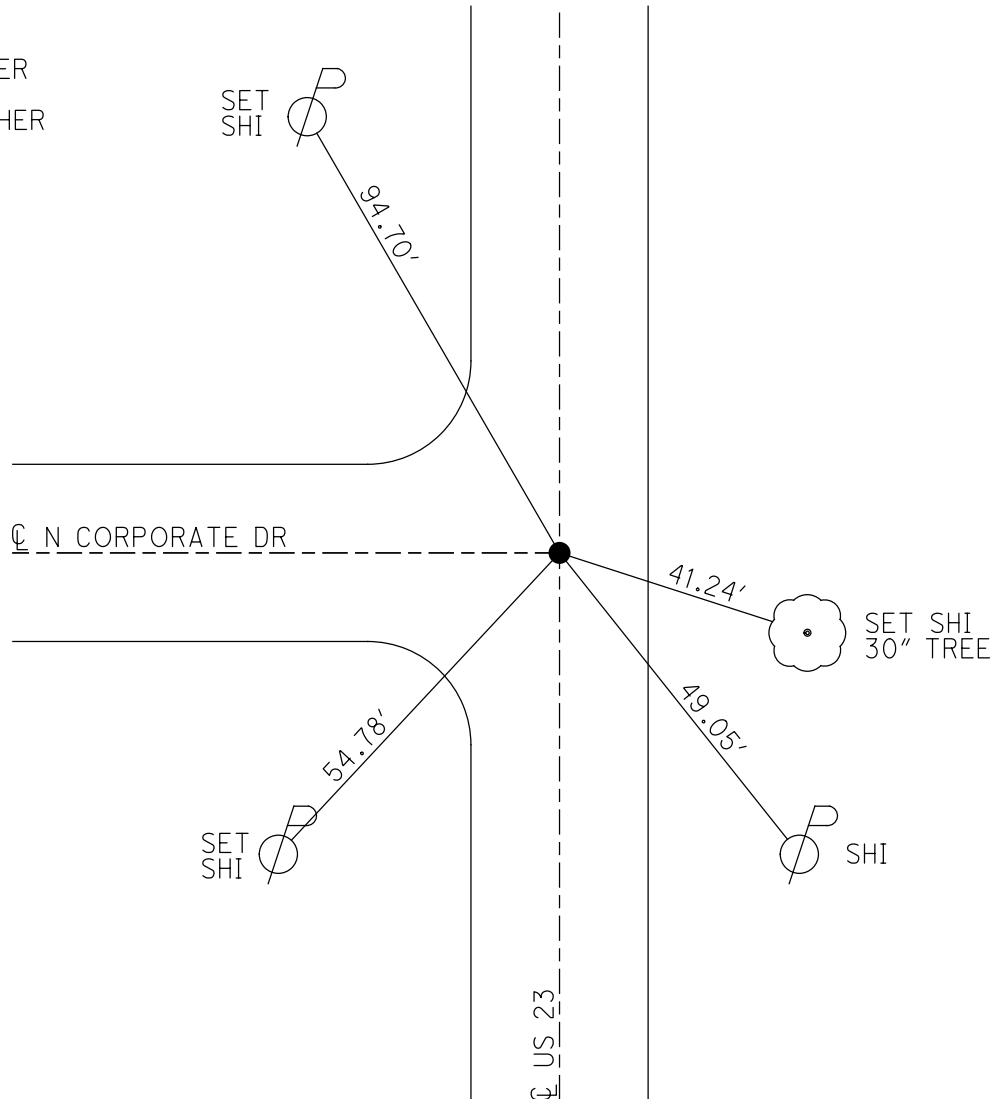
STATION: 542+74

HORZ.DATUM: _____ GEOID: _____

GRID: NORTHING: _____ EASTING: _____



RECORD:
FD P.K./WASHER
7/24/89, CAL
SET P.K./WASHER
11/3/89, SWN



O.D.O.T. DISTRICT 2 SURVEY OFFICE

PERSONNEL _____

REFERENCE NO. 30-C

SHEET _____ OF _____

NOTES LOEHRKE

H.C. Hoffman

R.C. BARNHISEL

DATE 7-24-89

WEATHER Hot - Humid

TEMP. +88

ROUTE U.S. 23

COUNTY Seneca

TOWNSHIP Loudon

SECTION 18

T. _____ R. _____

TYPE MONUMENT P.K. Nail / WASHER

ON SURFACE - BELOW Yes Set P.K./WASHER 11-3-89 2004

LEFT - C PAV'T. - RIGHT g Both PAV'Ts

LD TO RT EDGE PAVEMENT

S.L.M. 542 774

