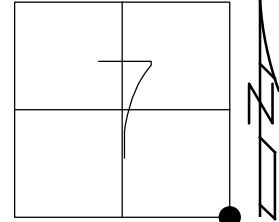


O.D.O.T. DISTRICT 2 SURVEY OFFICE (USE ONLY)

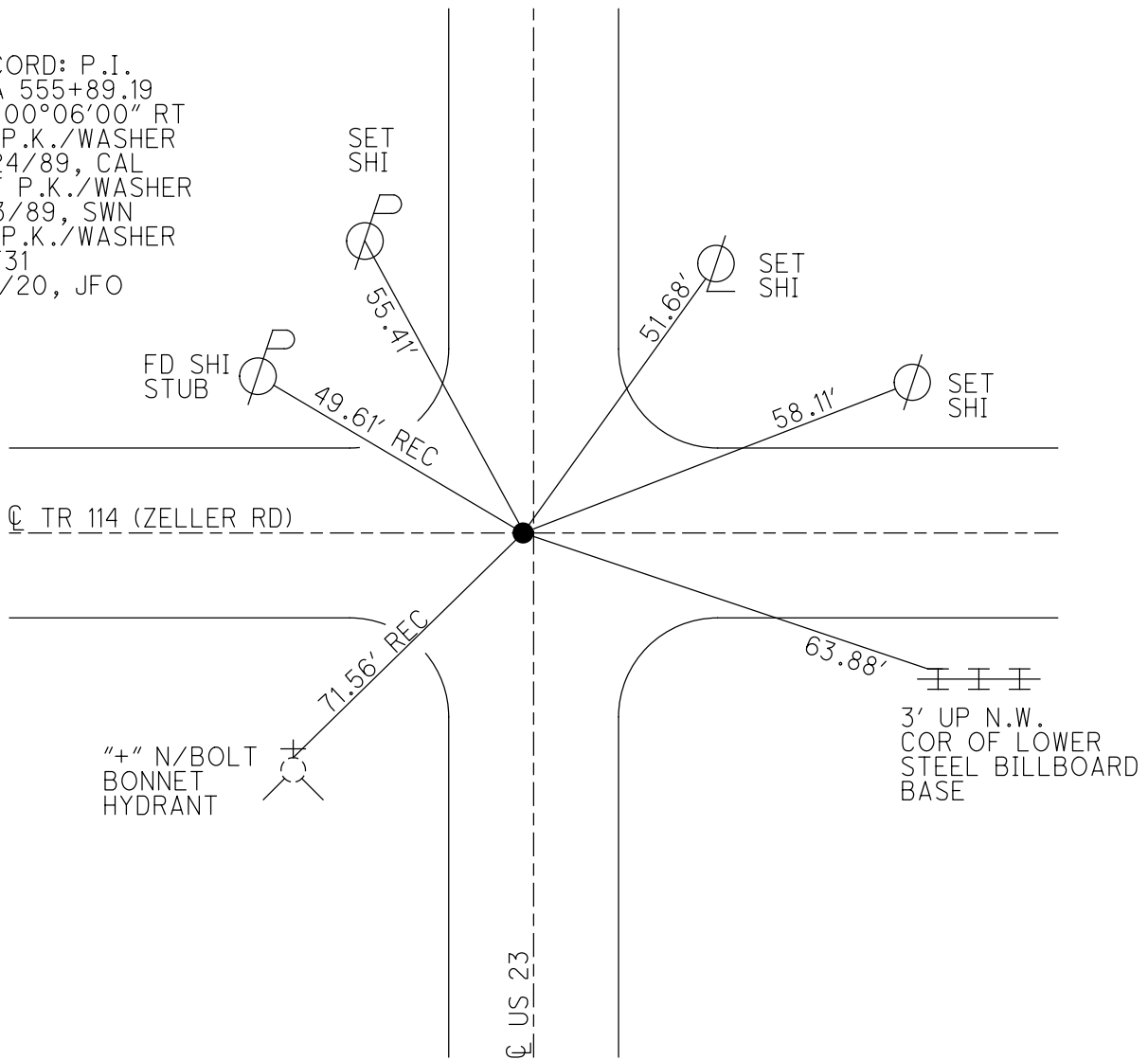
PERSONNEL _____ REFERENCE NO. 31 SHEET 16 OF 17
 NOTES O'DONNELL DATE 5/12/21 ROUTE US 23
 H.C. AUBLE WEATHER SUNNY COUNTY SENECA
 R.C. NIESE TEMP. 50° TOWNSHIP LOUDON
 DWG BY RHOADES PID 85264 SECTION 7
 T 2 N R 13 E

TYPE MONUMENT P.K./WASHER
~~ON SURFACE - BELOW~~ 1 1/2"
 OFFSET \odot PAVEMENT 0.6' LT : ~~RT~~
- TO - EDGE PAVEMENT
 STATION: 554+84



HORIZ.DATUM: NAD83 2011 GEOID: NAVD88 2012A
 GRID: NORTHING: 537210.649 EASTING: 1720143.734

RECORD: P.I.
 STA 555+89.19
 $\Delta = 00^{\circ}06'00''$ RT
 FD P.K./WASHER
 7/24/89, CAL
 SET P.K./WASHER
 11/3/89, SWN
 FD P.K./WASHER
 REF31
 1/7/20, JFO



O.D.O.T. DISTRICT 2 SURVEY OFFICE (USE ONLY)

PERSONNEL _____

REFERENCE NO. 31

SHEET 16 OF 17

NOTES LOEHRKE

DATE 7/24/89

ROUTE US 23

H.C. HOFFMAN

WEATHER HOT/HUMID

COUNTY SENECA

R.C. BARNHISEL

TEMP. 88°

TOWNSHIP LOUDON

SECTION 7

DWG BY NIESE PID _____

T 2 N R 13 E

TYPE MONUMENT P.K./WASHER

ON SURFACE - ~~BELOW~~ ON

OFFSET Q PAVEMENT 0.6' LT : ~~RT~~

- TO - EDGE PAVEMENT

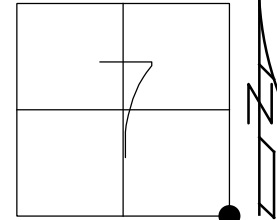
STATION: 554+84

HORZ.DATUM: _____

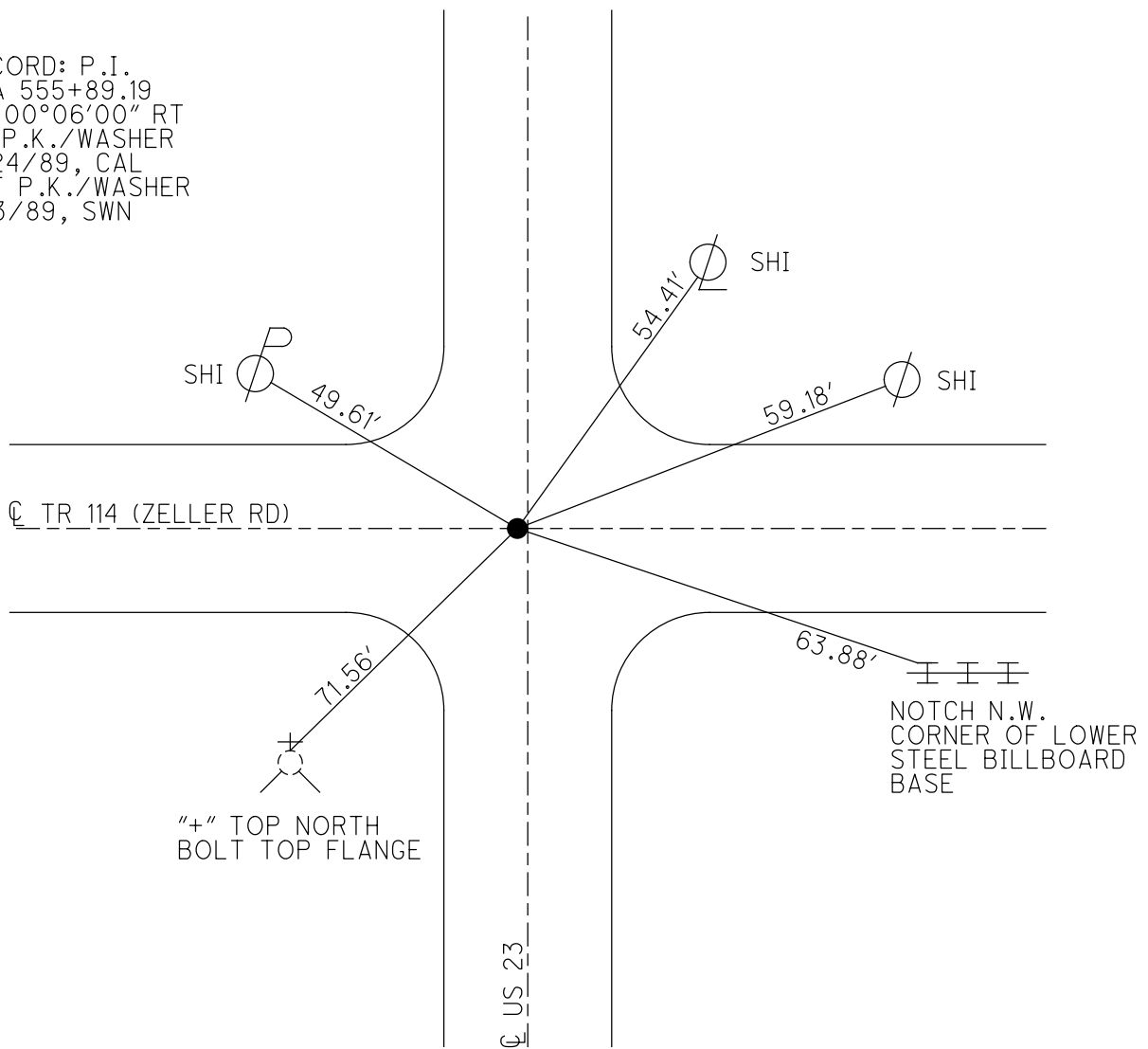
GEOID: _____

GRID: NORTHING: _____

EASTING: _____



RECORD: P.I.
 STA 555+89.19
 $\Delta = 00^{\circ}06'00''$ RT
 FD P.K./WASHER
 7/24/89, CAL
 SET P.K./WASHER
 11/3/89, SWN



O.D.O.T. DISTRICT 2 SURVEY OFFICE

PERSONNEL

REFERENCE NO. 31

SHEET OF

NOTES LOEHRKE

H.C. Hoffman

R.C. BARNHISEL

DATE 7-24-89

WEATHER Hot, Humid

TEMP. +80

ROUTE U.S. 23

COUNTY SENECA

TOWNSHIP LOUDON

SECTION 7

T R

TYPE MONUMENT P.K. & WASHER

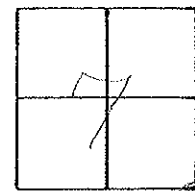
ON SURFACE - BELOW Yes

LEFT - PAV'T. - RIGHT 0.64

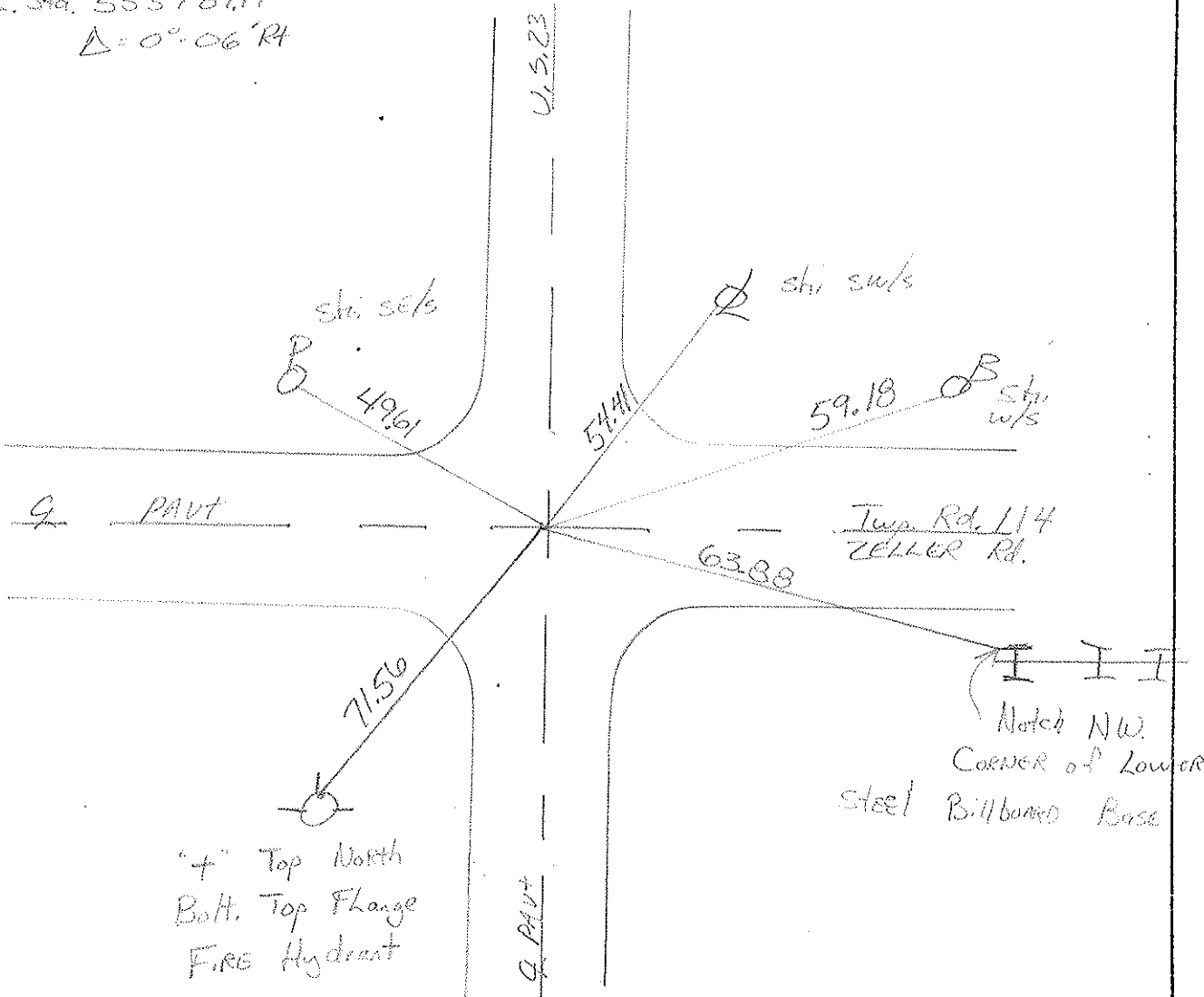
TO EDGE PAVEMENT

S.L.M. 554+84

*Set PK/washer
11-3-89
ON E
E-W PAVT.*



REC. P.I. Sta. 555789.19
 $\Delta = 0^{\circ} 06' R$



"4" Top North
Bolt, Top Flange
FIRE Hydrant

Notch NW
CORNER of Lower
Steel Billboard Base

County Seneca S.R. -U.S. 23

Township London

Section 7

T. N, R. E

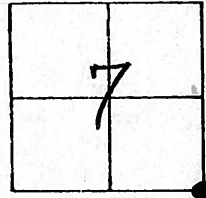
Personnel Hoffman
Householder

#31

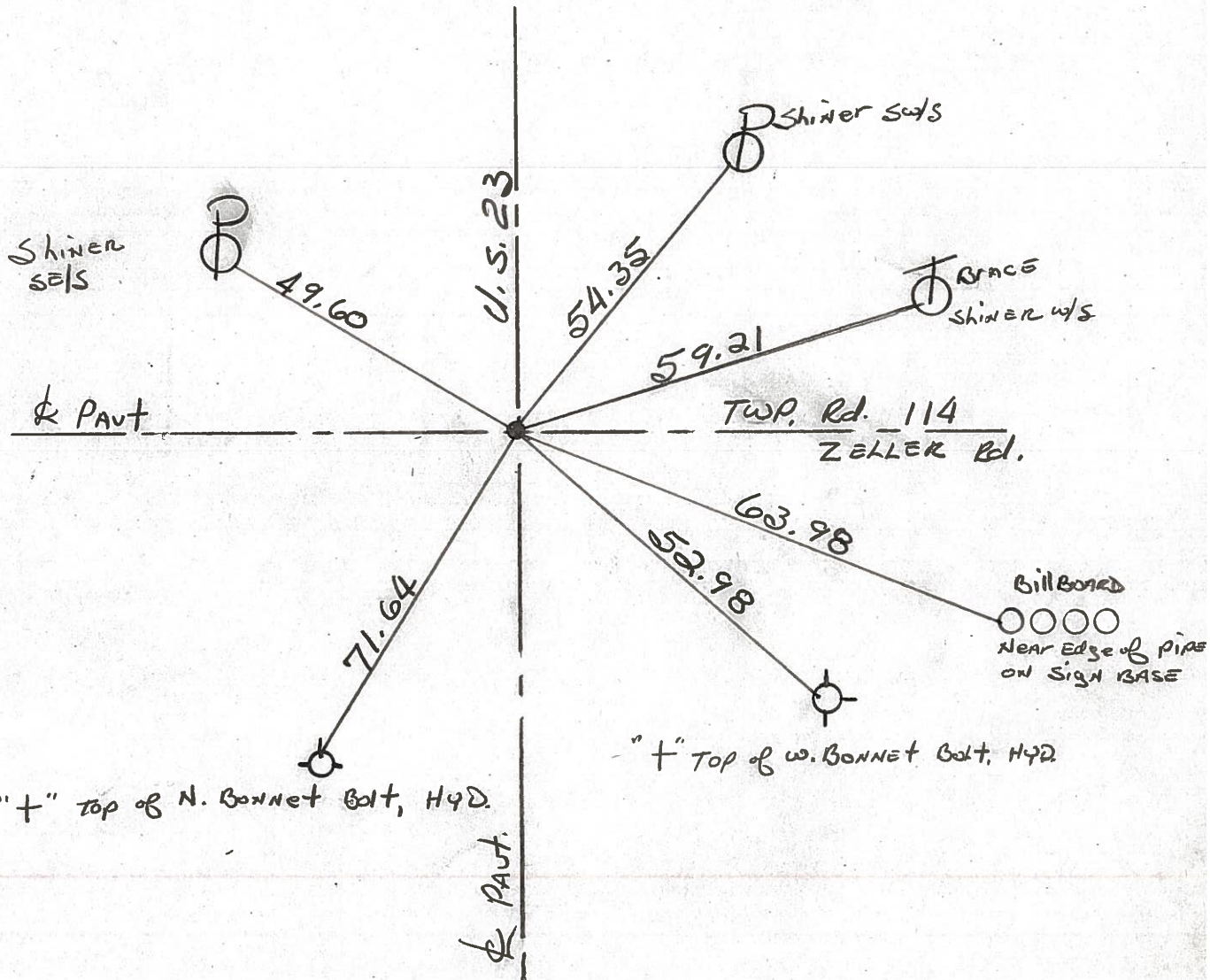
Date 6-24-81

Weather cloudy

Temp. +75°



Fd. P.K. Nail/washer @ surface @ ctr. of PAUTS



P.I. STA. 555 + 89.19 - Δ = 0° - 06' Rt. ~ Rec.

PERSONNEL	TITLE	PERSONNEL	TITLE	COUNTY	Seneca	DATE	8-27-6
Schneider				S. R.	U.S. 23	WEATHER	Fair
Mosser				SEC.	Wyandot Co. Line N.	TEMP.	75°
Barbour				DESCRIPTION <u>Ties for Control Points</u>			
Potts				JOB NO. _____			

