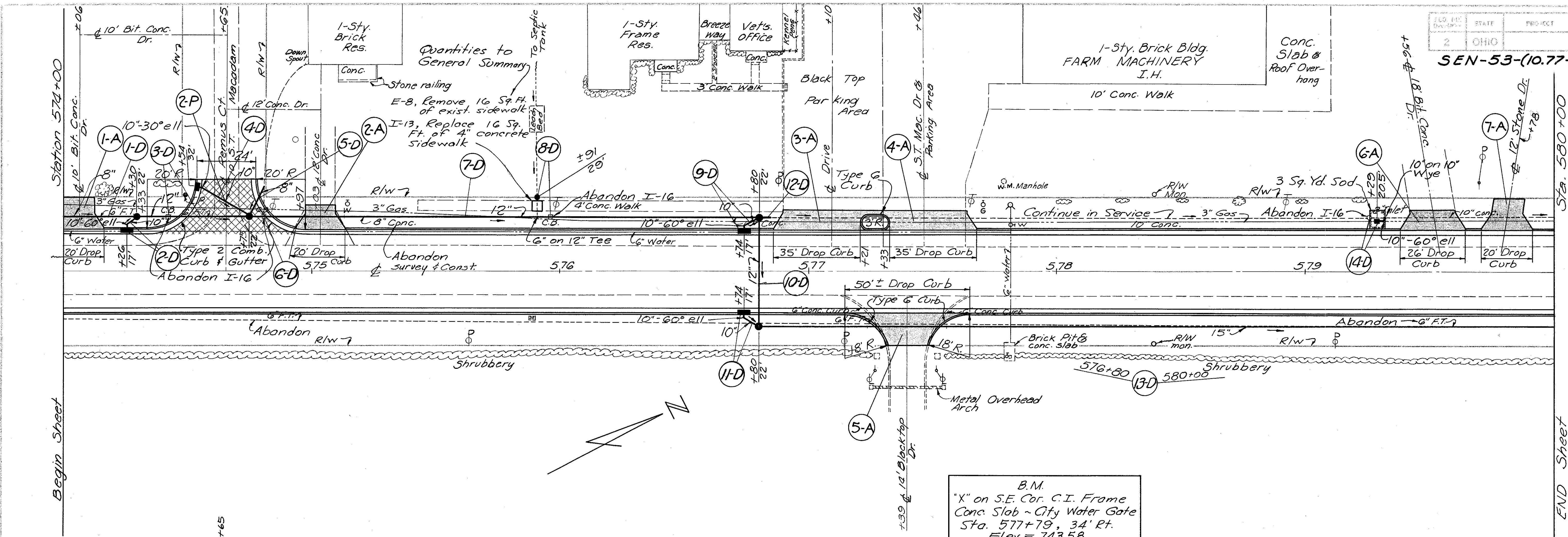






FOR ANY QUESTIONS PLEASE CONTACT ODOT DISTRICT 2 REAL ESTATE AT 419-353-8131



Station	Prop. Elev.	Prop. Gutter Elev.	Prop. Gutter Elev.	Prop. Gutter Elev.
574+00	750.67	750.37	750.17	750.37
575+00	749.68	49.38	49.78	49.38
576+00	747.49	47.92	48.32	47.92
577+00	745.73	45.43	45.83	45.43
578+00	744.71	44.03	44.33	44.03
579+00	743.65	43.35	43.75	43.35
580+00	742.97	43.02	43.42	43.02

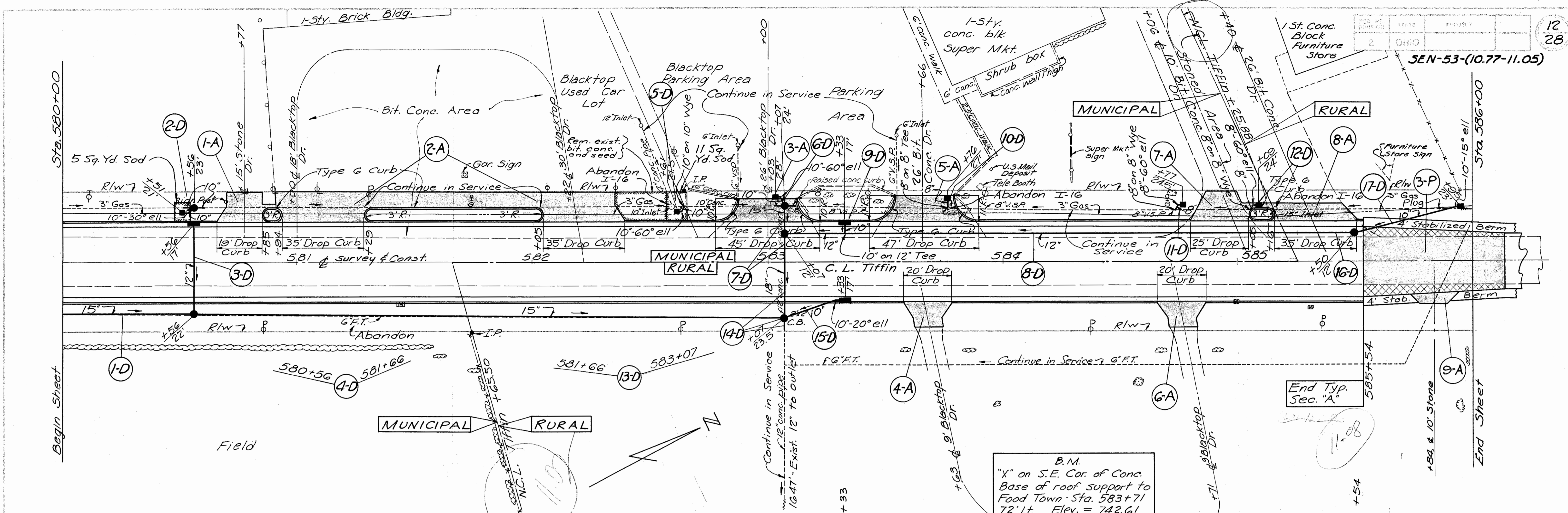
B.M.  
"X" on S.E. Cor. C.I. Frame  
Conc. Slab - City Water Gate  
Sta. 577+79, 34' Rt.  
Elev. = 743.58

NOTE: Rock elev. probed  
18' Rt. of Survey  
and Const.

Sta. 574+00 to Sta. 580+00

FOR ANY QUESTIONS PLEASE CONTACT ODOT DISTRICT 2 REAL ESTATE AT 419-353-8131

SEN-53-(10.77-11.05)



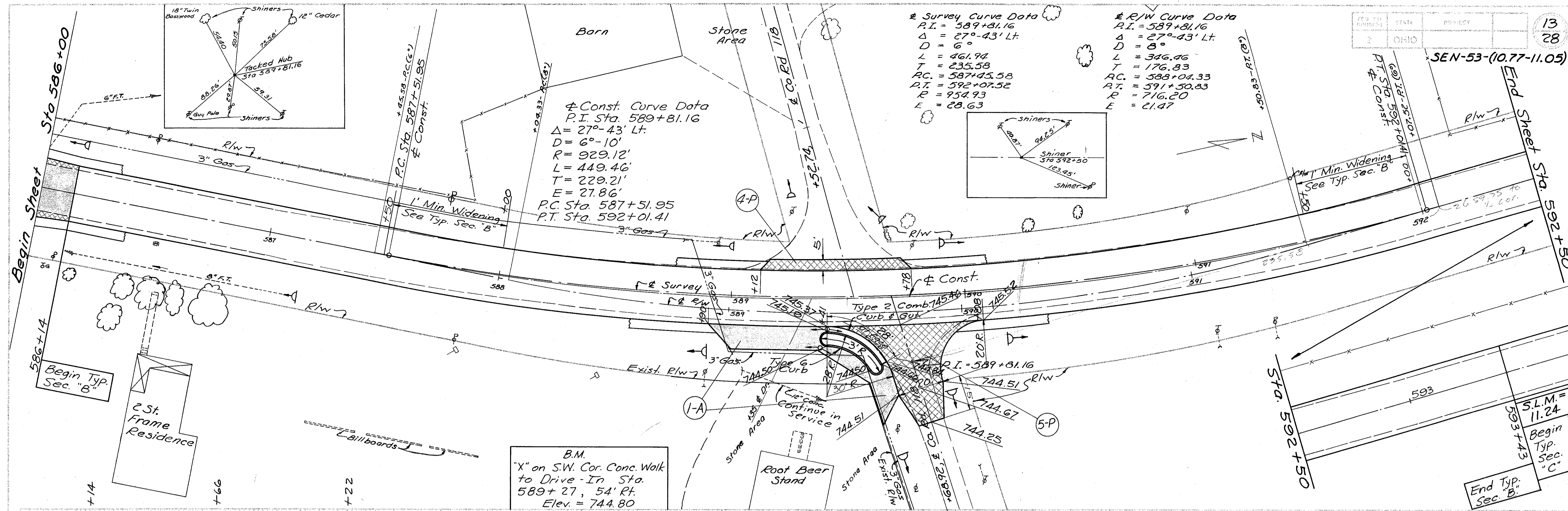
Station	Right Gutter Elev.	Left Gutter Elev.	Notes
580+00	742.67	742.67	
580+56	42.33	42.73	10" Lt. +5g (No. 1 M.H. Rt. & Lt. No. 3 C.B. (Mod) Lt.)
581+00	42.03	42.43	
581+66	41.82	42.22	
582+00	41.74	42.14	
582+07	41.47	41.87	583+07, 23.5' Rt. & Survey Build No. 1 M.H. Top M.H. = 741.0+ FL 15" of M.H. = 736.16 FL 18" of M.H. = 735.92 FL 10" of M.H. = 737.50 Connect exist. 12' east to new M.H.
583+00	41.27	41.67	
583+07	41.08	41.48	+07 (2 No. 1 M.H.'s Lt. 10" Lt. +33 (No. 3 C.B. 41.08
584+00	41.11	41.51	
584+07	41.17	41.57	
585+00	41.23	41.63	
585+09	41.29	41.69	
586+00	41.36	41.76	
586+07	741.81	741.81	

Note: Rock elev. probed 18" Rt. of & Survey and const.

B.M. "X" on S.E. Cor. of Conc. Base of roof support to Food Town Sta. 583+71 72' Lt. Elev. = 742.61

End Typ. Sec. "A"

Sta. 580+00 to Sta. 586+00



Station	Rt. Edge	Center Elevation	Lt. Edge
586+00	741.61	741.61	741.61
586+14	741.71	741.90	741.71
587+00	42.25	42.25	42.06
587+14	42.58	42.50	42.31
588+00	42.97	42.78	42.59
588+14	43.44	43.44	42.72
589+00	44.22	44.22	42.94
589+14	44.79	44.79	43.29
590+00	45.15	45.15	43.65
590+14	45.42	45.42	43.92
591+00	45.52	45.52	44.02
591+14	45.53	45.53	44.03
592+00	45.54	45.54	44.04
592+14	45.36	45.36	44.04
592+30	744.78	744.78	744.03

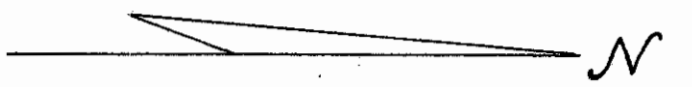
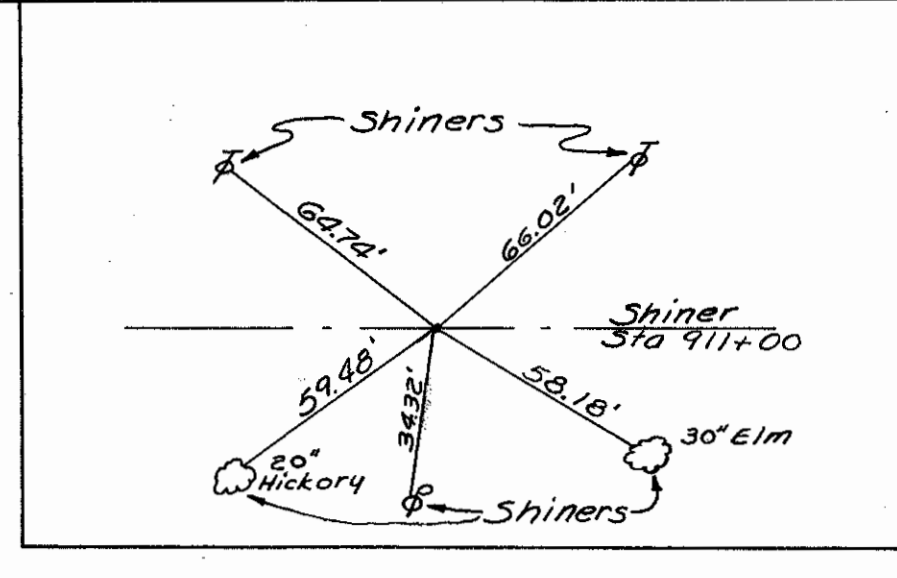
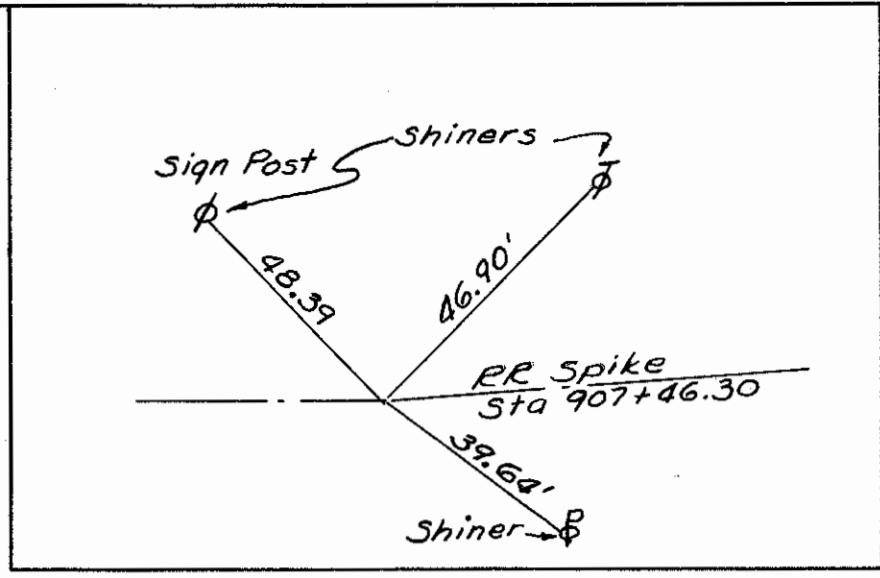
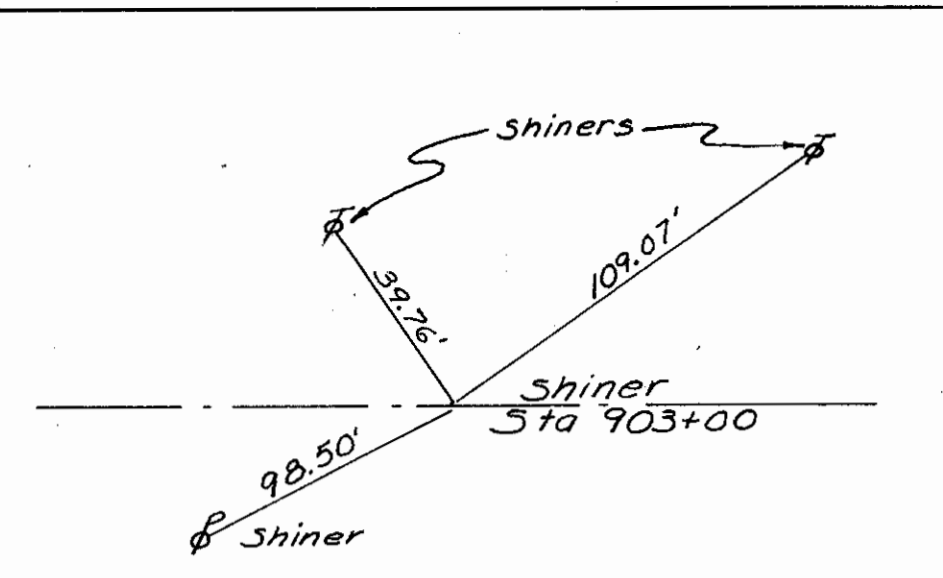
Station	Rt. Edge	Center Elevation	Lt. Edge
586+00	741.71	741.71	741.71
587+00	742.31	742.31	742.31
588+00	742.85	742.85	742.85
589+00	743.46	743.46	743.46
590+00	744.09	744.09	744.09
591+00	744.60	744.60	744.60
592+00	744.56	744.56	744.56

Sta. 586+00 to Sta. 592+00

FED. RD DIVISION	STATE	PROJECT
2	OHIO	

14  
28

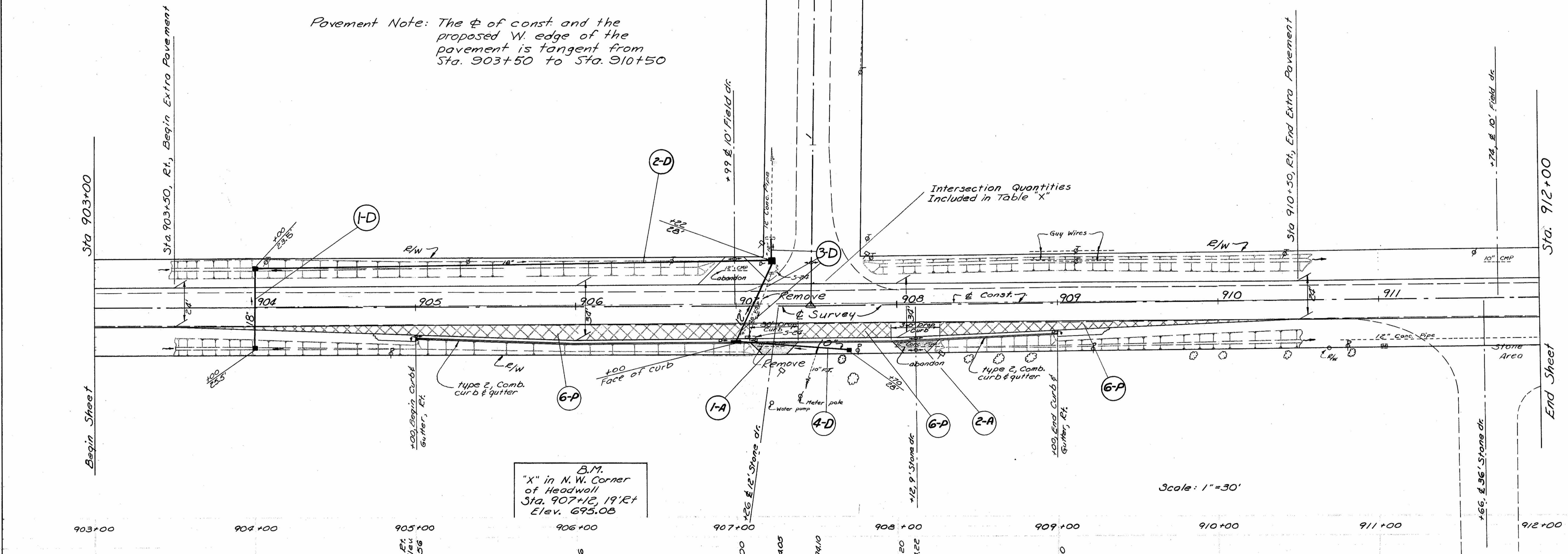
SEN-53-(10.77-11.05)



Note: All "plus's" and "outs" for drainage are from  $\pm$  Survey

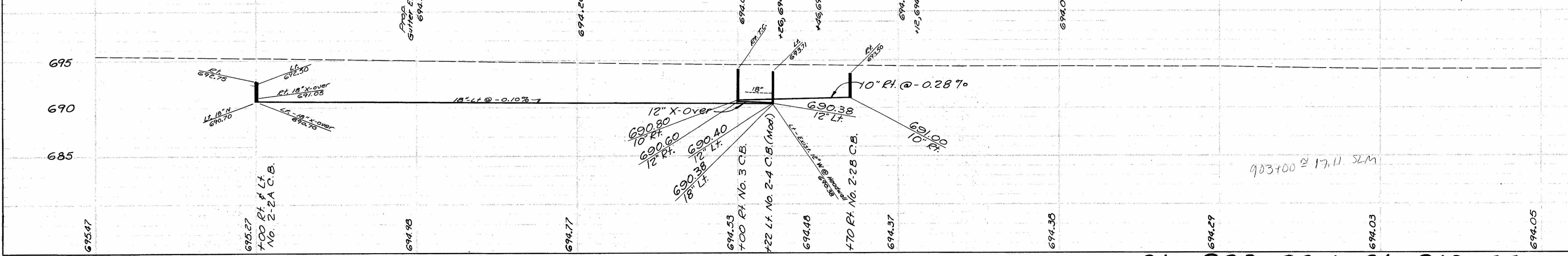
Pavement Note: The  $\phi$  of const. and the proposed W. edge of the pavement is tangent from Sta. 903+50 to Sta. 910+50

P.I. Sta. 907+46.30  
 $\Delta = 0^\circ 30' Lt.$



B.M.  
"X" in N.W. Corner  
of Headwall  
Sta. 907+12.19 Rt  
Elev. 695.08

Scale: 1"=30'



Sta. 903+00 to Sta. 912+00

903+00  $\approx$  17.11 SLM