

O.D.O.T. DISTRICT 2 SURVEY OFFICE (USE ONLY)

PERSONNEL _____ REFERENCE NO. 1 SHEET 1 OF 41

NOTES	<u>RHOADES</u>	DATE	<u>5/2/16</u>	ROUTE	<u>SR 53</u>
H.C.	<u>O'DONNELL</u>	WEATHER	<u>CLOUDY</u>	COUNTY	<u>SENECA</u>
R.C.	<u>RHOADES</u>	TEMP.	<u>48°</u>	TOWNSHIP	<u>SENECA</u>
	<u>LEU</u>			SECTION	<u>33</u>
				T	<u>1</u> N
				R	<u>14</u> E

TYPE MONUMENT P.K.NAIL

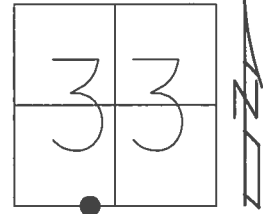
~~ON SURFACE~~ - BELOW 1"

LEFT - ☉ PAV'T - ~~RIGHT~~ 2', 12.1' S. OF ☉ E.

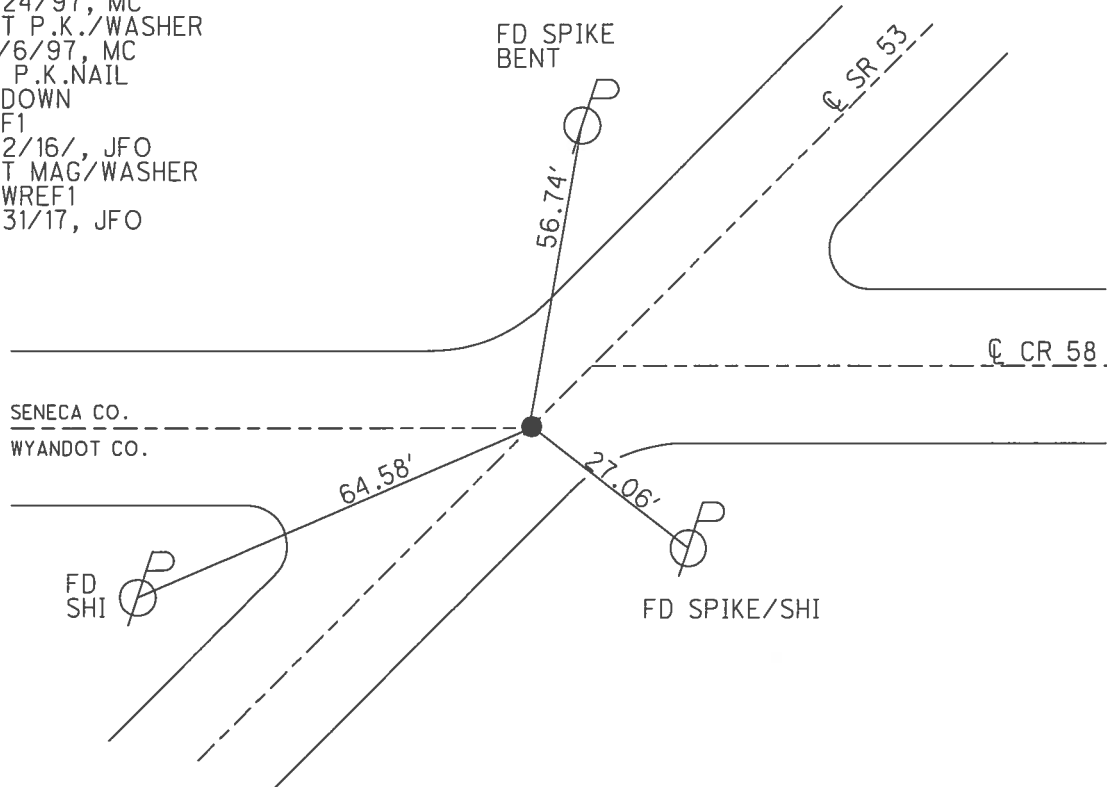
10.3' TO LT EDGE PAVEMENT

S.L.M. 0+00

Grid: Northing: 484037.842 Easting: 1759161.987



RECORD:
 STA. 0+00
 P.K.NAIL ATOP
 IPIN ± 4" DOWN
 FD P.K./WASHER
 6/24/97, MC
 SET P.K./WASHER
 10/6/97, MC
 FD P.K.NAIL
 1" DOWN
 REF1
 5/2/16/, JFO
 SET MAG/WASHER
 NEWREF1
 8/31/17, JFO



O.D.O.T. DISTRICT 2 SURVEY OFFICE

PERSONNEL _____

REFERENCE NO. 1

SHEET 1 OF 34

NOTES Rousos

H.C. Rousos

DATE 6-24-97

ROUTE 53

R.C. Canterbury

WEATHER Sunny

COUNTY Seneca

Weaver P

TEMP. +85°

TOWNSHIP Seneca

SECTION 33

T. 14 R. 19 E.

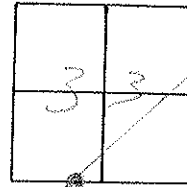
TYPE MONUMENT PK/Washer

ON SURFACE - BELOW yes

LEFT - 0 PAV'T. - RIGHT 1.0' LT / ON & C.R. "SSN

9.3 TO LT EDGE PAVEMENT

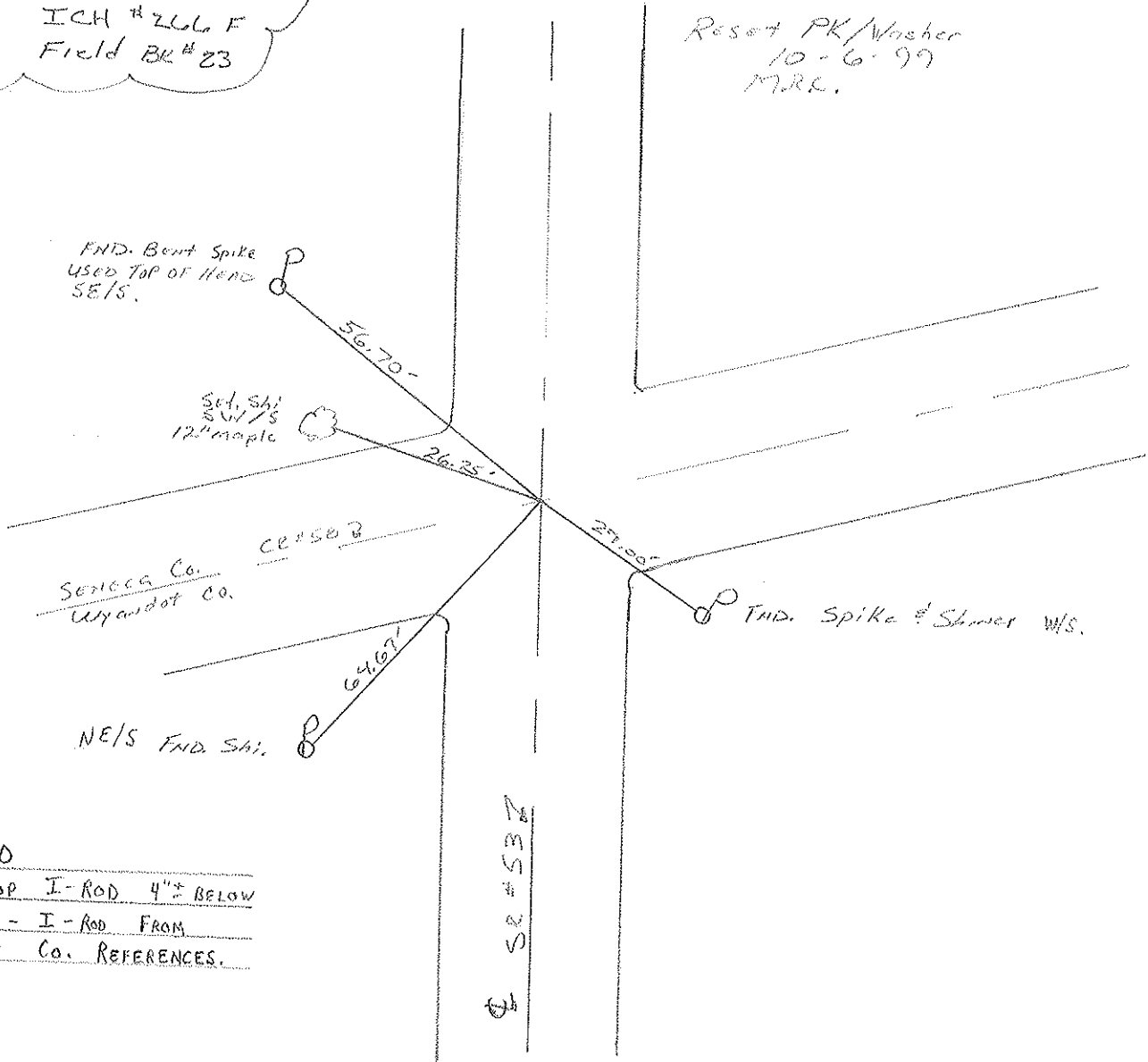
S.L.M. 0.00



Note: Ref. #1 to 15 incl.

ICH #266 F
Field BK #23

Reset PK/Washer
10-6-97
M.R.R.



RECORD:

0+00

PK ATOP I-ROD 4"± BELOW

SURFACE - I-ROD FROM

WYANDOT Co. REFERENCES.

SSN # 25

Resurfaced 1997

O.D.O.T. DISTRICT 2 SURVEY OFFICE

PERSONNEL

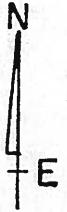
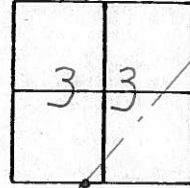
NOTES CRONIN
H.C. RIPPLE
R.C. BARBOUR
GEYMAN

REFERENCE NO. 1
DRAWN 10/27/89
DATE 8/30/88
WEATHER SUNNY
TEMP. 65°

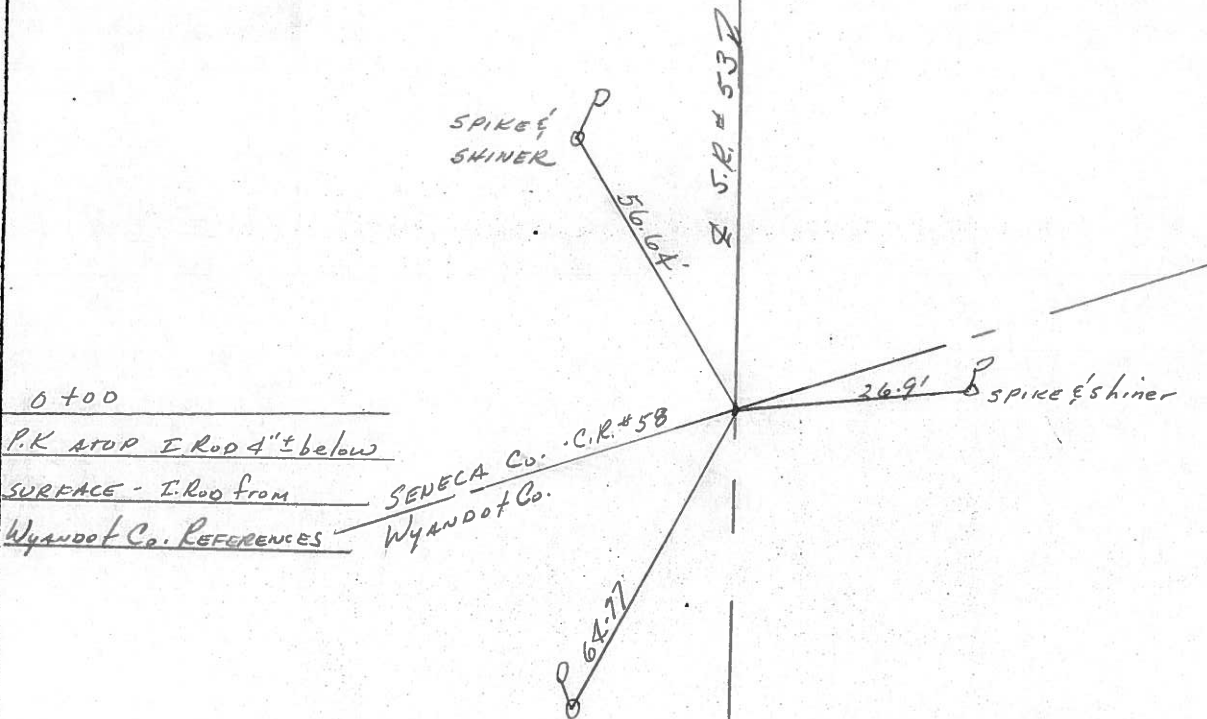
SHEET 1 OF

ROUTE #53
COUNTY SENECA
TOWNSHIP SENECA
SECTION 33
T 1 N R 14 E

TYPE MONUMENT P.K
ON SURFACE - BELOW
LEFT- & PAV'T. - RIGHT 15'
 TO EDGE PAVEMENT
S.L.M. 0.00



Note: REF. # 1 to 15 INCL
ICH # 266' F'
FIELD BK # 23

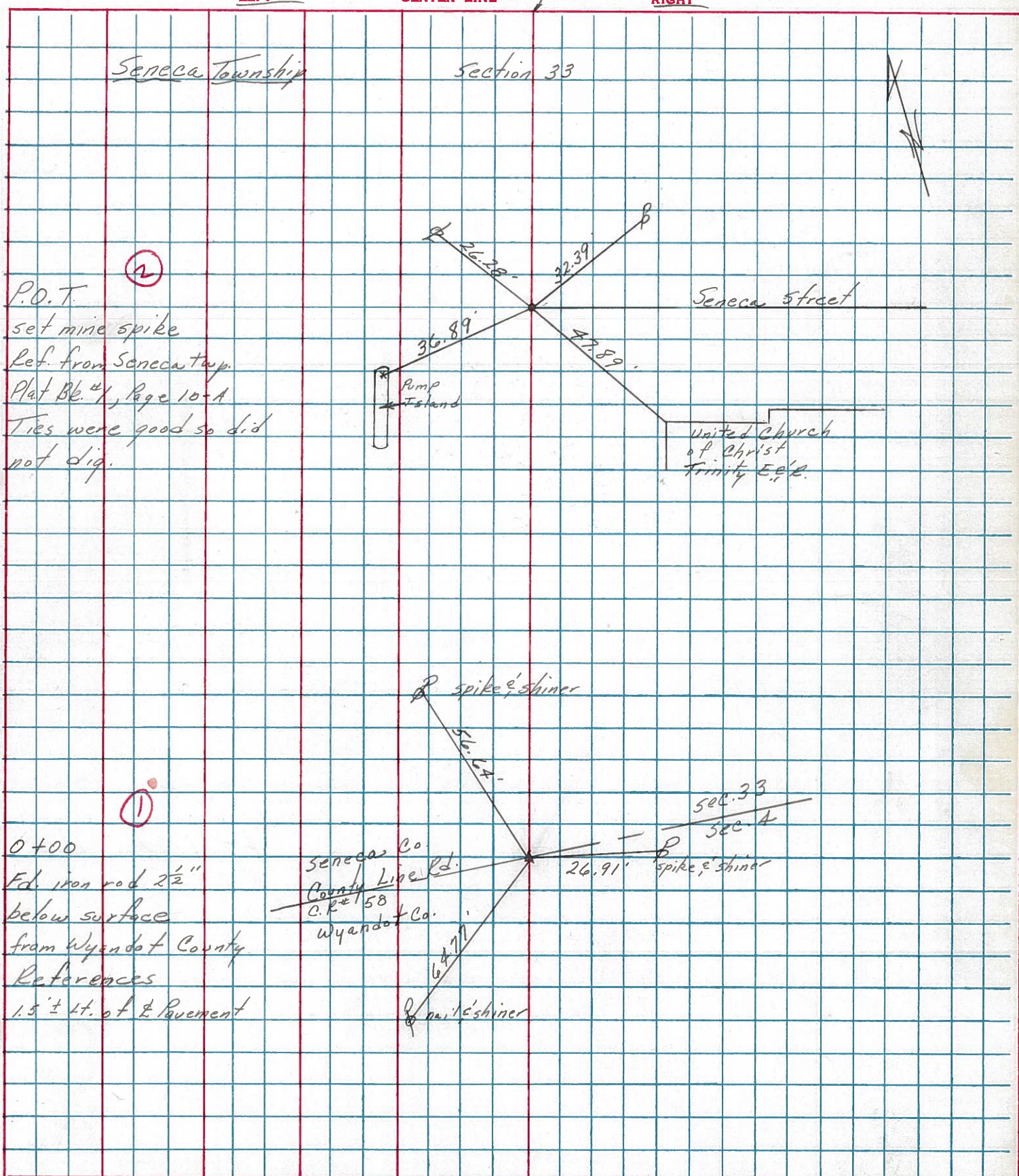


0 + 00
P.K. atop I.Rod 4"± below
SURFACE - I.Rod from
Wyandot Co. REFERENCES

SENECA Co. - C.R. # 58
Wyandot Co.

PERSONNEL	TITLE	PERSONNEL	TITLE	COUNTY	DATE
Cronin		Schneider		Seneca	12/8/75
Ripple		Masser		S. R. #53	WEATHER sunny
Geyman		Barbour		SEC. I.C.H. #266 "F"	TEMP. 33°
DESCRIPTION				Field Bk. #23	JOB NO.

Ties for Control Points



PERSONNEL TITLE PERSONNEL TITLE

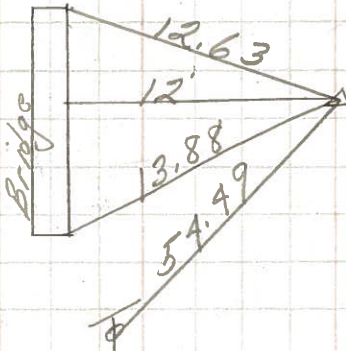
Schneider
Mosser
Barbour
Potts

COUNTY Seneca DATE 8-28-69
S. R. 53 WEATHER Fair
SEC. Wyandot Co. Line N. TEMP. 85°

DESCRIPTION Ties for Control Points LEFT CENTER LINE RIGHT JOB NO.

9

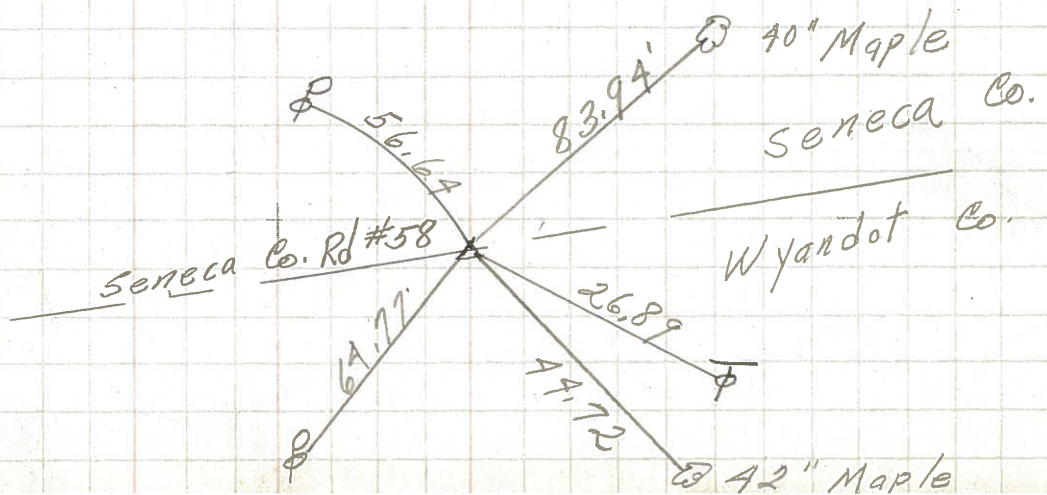
P.I.
64+28.5
 $\Delta = 0^\circ 59' \text{ Rt.}$
Br. # 01.21
Small spk.



8351

11

P.I.
0+00
 $\Delta = 7^\circ 30' \text{ Rt.}$
P.K. Nail
2" down



8350