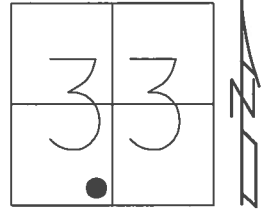


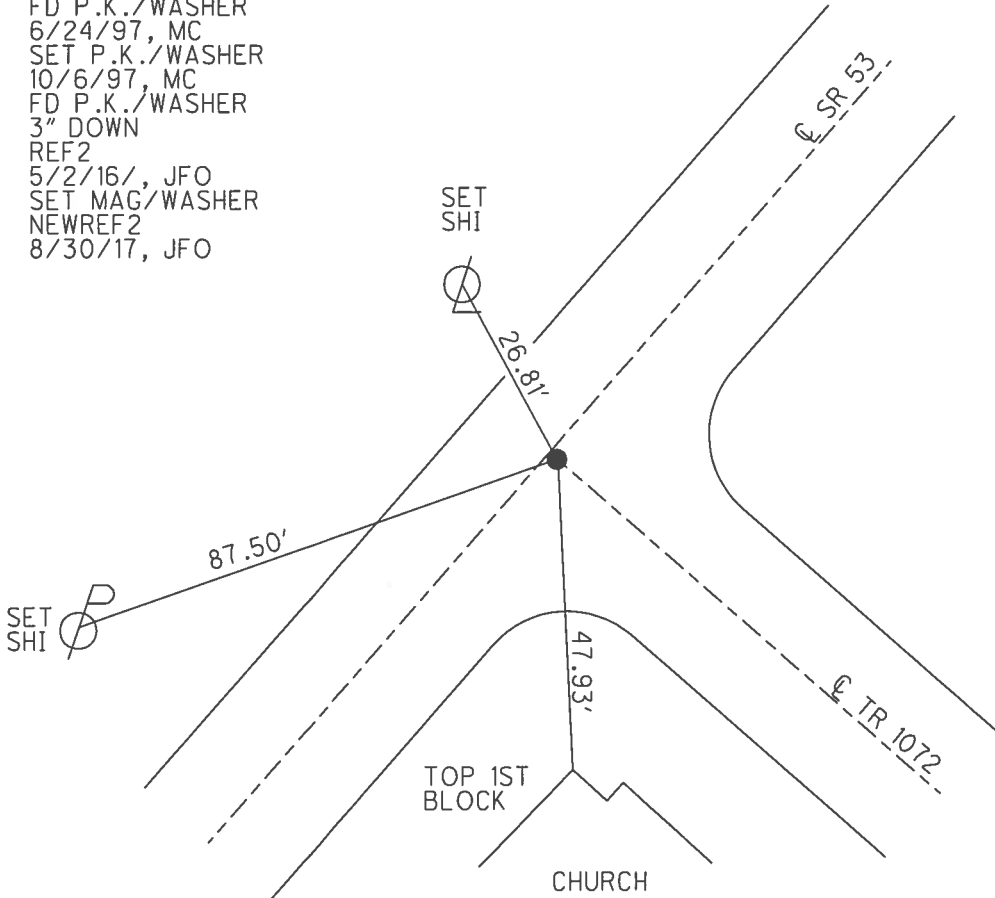
O.D.O.T. DISTRICT 2 SURVEY OFFICE (USE ONLY)

PERSONNEL _____ REFERENCE NO. 2 SHEET 2 OF 41
 NOTES RHOADES DATE 5/2/16 ROUTE SR 53
 H.C. O'DONNELL WEATHER CLOUDY COUNTY SENECA
 R.C. RHOADES TEMP. 48° TOWNSHIP SENECA
 _____ LEU _____ SECTION 33
 T 1 N R 14 E

TYPE MONUMENT P.K./WASHER
~~ON SURFACE~~ - BELOW 3"
~~LEFT~~ - Q PAV'T - RIGHT 0.8'
8.5' TO RT EDGE PAVEMENT
 S.L.M. 6+15.69
 Grid: Northing: 484521.910 Easting: 1759542.462



RECORD:
 STA. 6+16
 P.K./WASHER ATOP
 MINE SPIKE
 FD P.K./WASHER
 6/24/97, MC
 SET P.K./WASHER
 10/6/97, MC
 FD P.K./WASHER
 3" DOWN
 REF2
 5/2/16/, JFO
 SET MAG/WASHER
 NEWREF2
 8/30/17, JFO



O.D.O.T. DISTRICT 2 SURVEY OFFICE

PERSONNEL

NOTES Rousas
 H.C. Rousas
 R.C. Canterbury
W Weaver

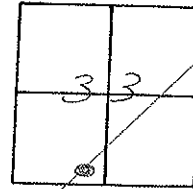
REFERENCE NO. 2

SHEET 2 OF 34

DATE 6-24-97
 WEATHER SUNNY
 TEMP. +85°

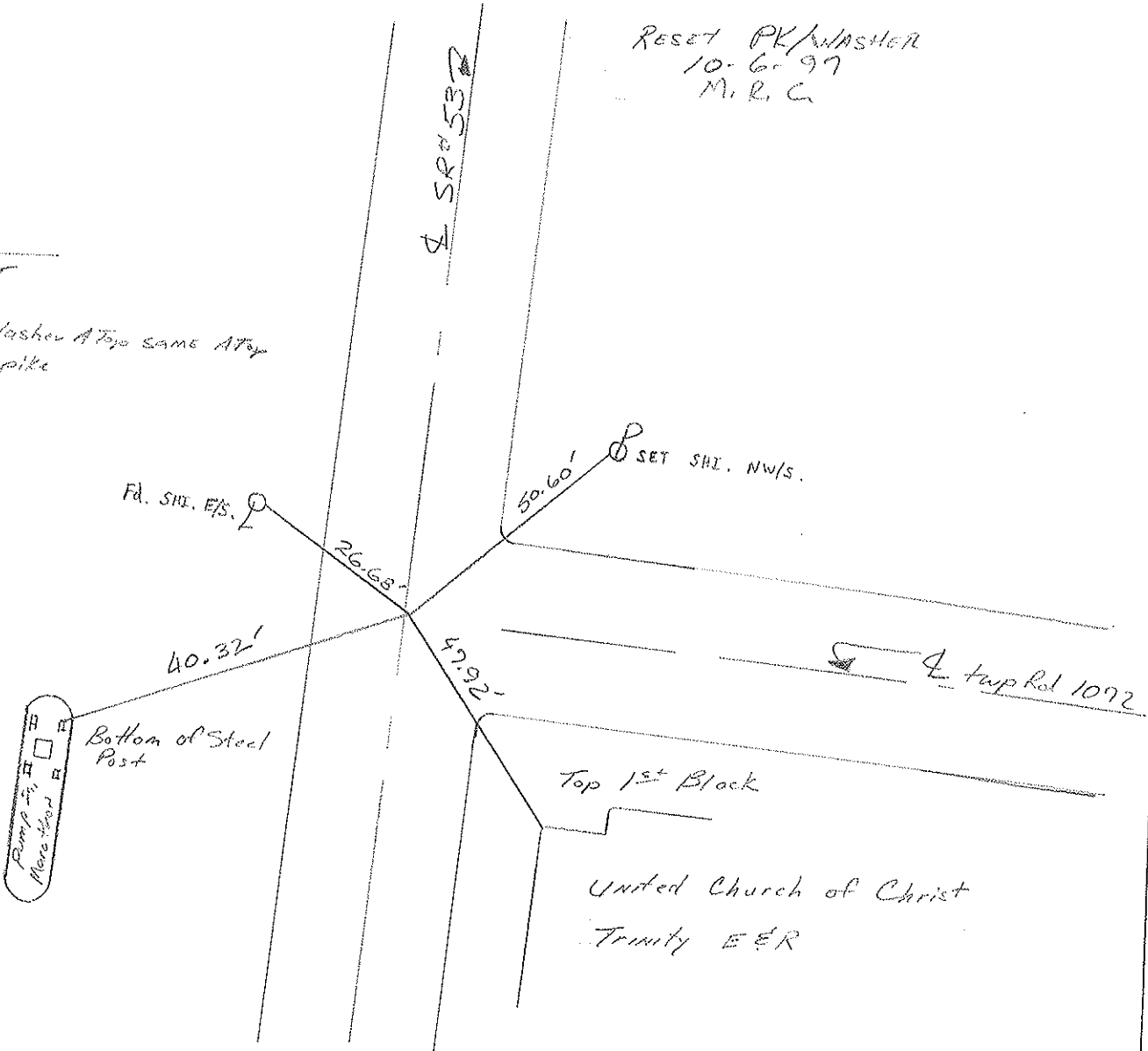
ROUTE 453
 COUNTY Seneca
 TOWNSHIP Seneca
 SECTION 33
 T₁ N₁ R 19E

TYPE MONUMENT PK & Washer
 ON SURFACE - BELOW yes
 LEFT- C PAV'T. - RIGHT 1.0' RT / ON & typ Rd 1072
B.S TO RT EDGE PAVEMENT
 S.L.M. 0+187.8 SLK



RECORD:

P.O.T.
 Lot 16
 PK & Washer A Top same A Top
 more spike



O.D.O.T. DISTRICT 2 SURVEY OFFICE

PERSONNEL

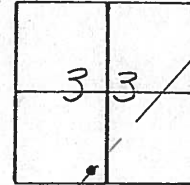
NOTES CROWIN
 H.C. RIPPLE
 R.C. BARBOUR
GEYMAN

REFERENCE NO. 2
 DRAWN 10/27/89
 DATE 8/30/88
 WEATHER SUNNY
 TEMP. 65°

SHEET 2 OF _____

ROUTE # 53
 COUNTY SENECA
 TOWNSHIP SENECA
 SECTION 33
T 1 N R 14 E

TYPE MONUMENT P.K. & WASHER
 ON SURFACE - BELOW _____
 LEFT- & PAV'T. - RIGHT 1'
 TO _____ EDGE PAVEMENT
 S.L.M. 0.00117



P.O.T
616 t
P.K. & WASHER ATOP SAME ATOP
MINE SPIKE. ORIG. REFERENCES
FROM SEN. CO. PLAT BK. #1, Pg. 10-A

