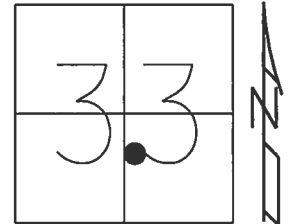


O.D.O.T. DISTRICT 2 SURVEY OFFICE (USE ONLY)

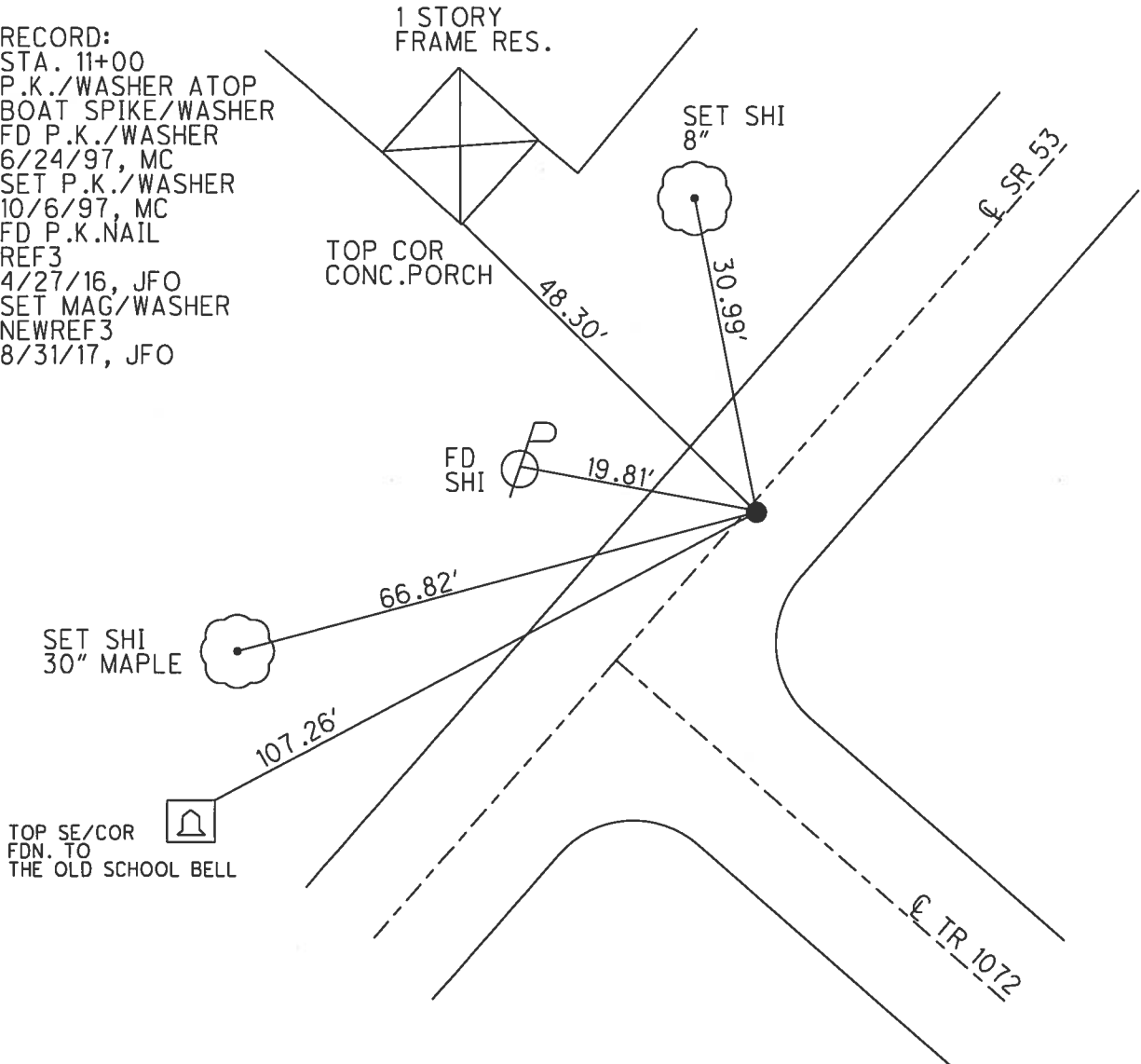
PERSONNEL _____ REFERENCE NO. 3 SHEET 3 OF 41
 NOTES RHOADES DATE 4/26/17 ROUTE SR 53
 H.C. O'DONNELL WEATHER SUNNY COUNTY SENECA
 R.C. RHOADES TEMP. 64° TOWNSHIP SENECA
 _____ SECTION 33
 _____ T 1 N R 14 E

TYPE MONUMENT P.K.NAIL
 ON SURFACE - ~~BELOW~~ ON _____
~~LEFT~~ - C PAV'T - RIGHT 0.6'
8.3' TO RT EDGE PAVEMENT
 S.L.M. 10+99.84



Grid: Northing: 484902.525 Easting: 1759841.662

RECORD:
 STA. 11+00
 P.K./WASHER ATOP
 BOAT SPIKE/WASHER
 FD P.K./WASHER
 6/24/97, MC
 SET P.K./WASHER
 10/6/97, MC
 FD P.K.NAIL
 REF3
 4/27/16, JFO
 SET MAG/WASHER
 NEWREF3
 8/31/17, JFO



O.D.O.T. DISTRICT 2 SURVEY OFFICE

PERSONNEL

REFERENCE NO. 3

SHEET 3 OF 34

NOTES Canterbury

H.C. Rousos

R.C. Canterbury

P Weaver

Rousos - DRAWING

DATE 6-24-97

WEATHER SUNNY

TEMP. 85

ROUTE 53

COUNTY Seneca

TOWNSHIP Seneca

SECTION 33

T.L.N.R. 14E

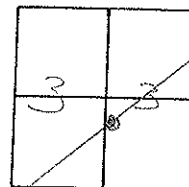
TYPE MONUMENT PK & WASHER

ON SURFACE - BELOW yes

LEFT- & PAV'T. - RIGHT 0.9' RT

8.3 TO RT. EDGE PAVEMENT

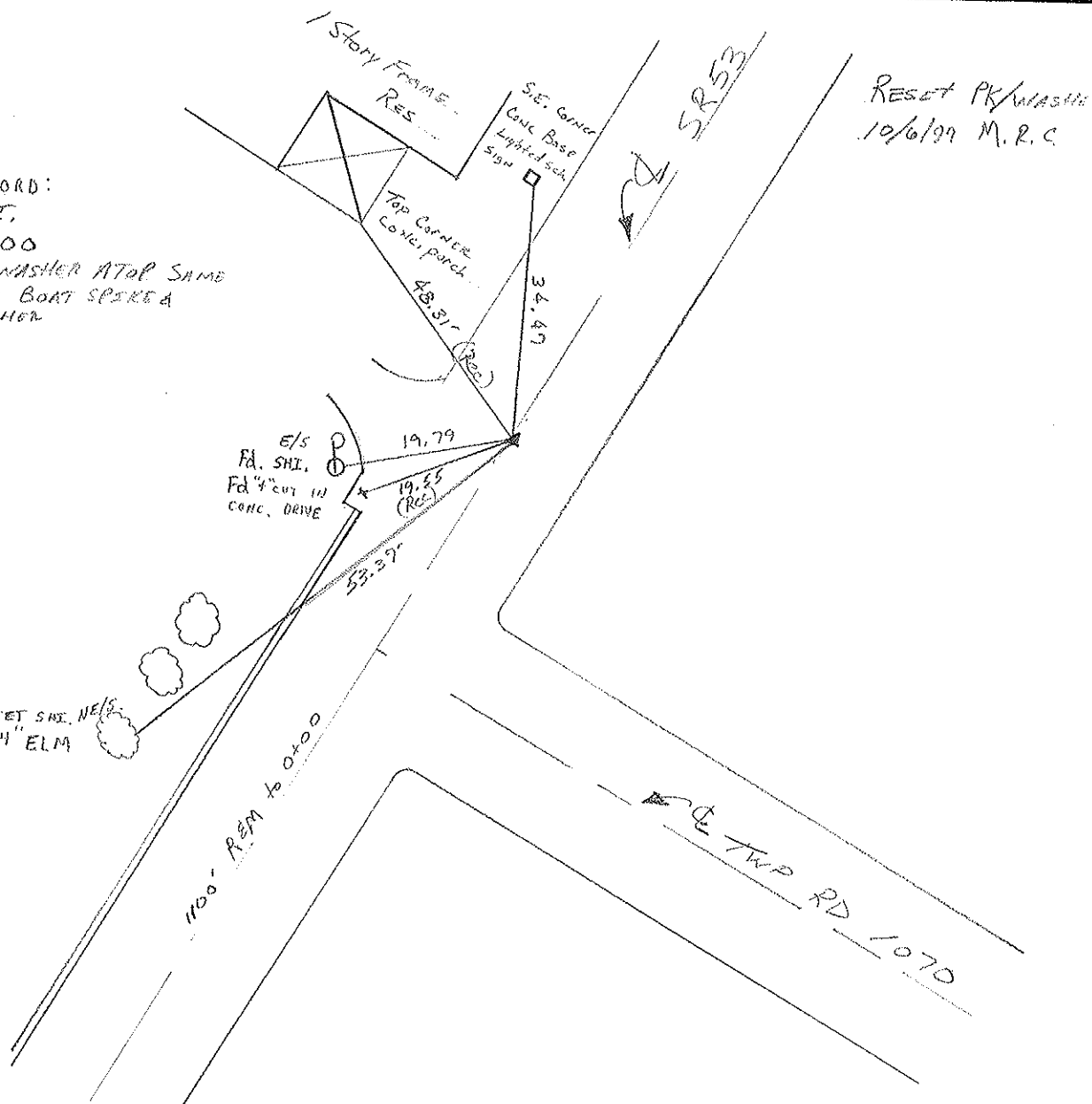
S.L.M. 0+335.98 SLK



RECORD:

P.I.
11:00
PK/WASHER ATOP SAME
ATOP BOAT SPEAKER
WASHER

SET SHI. NEIS
24" ELM



O.D.O.T. DISTRICT 2 SURVEY OFFICE

PERSONNEL

REFERENCE NO. 3

SHEET 3 OF

NOTES CROWN

DRAWN 10/27/89

H.C. RIPPLE

DATE 8/30/88

R.C. BARBOUR

WEATHER SUNNY

CROWN

TEMP. 65°

ROUTE # 53

COUNTY SENECA

TOWNSHIP SENECA

SECTION 33

T I N R I A E

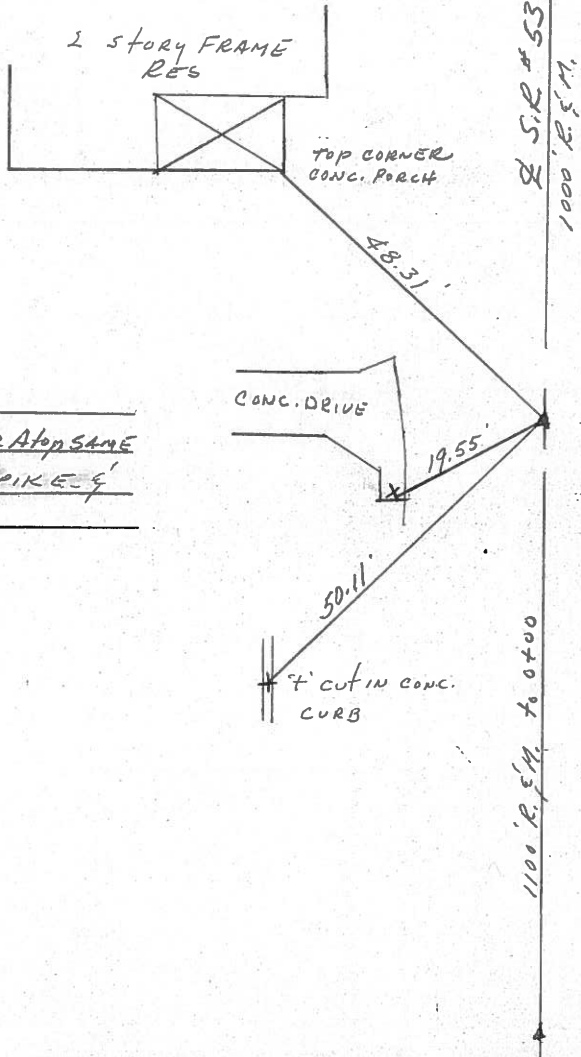
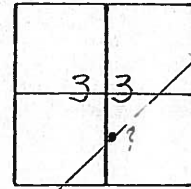
TYPE MONUMENT P.K. & WASHER

ON SURFACE - BELOW

LEFT - € PAV'T. - RIGHT 1

TO EDGE PAVEMENT

S.L.M. 0.2083



P.I.
11+00
P.K. & WASHER ATop SAME
ATop BOAT SPIKE &
WASHER

PERSONNEL	TITLE	PERSONNEL	TITLE
Cranin		Schneider	
Ripple		Mosser	
Geyman		Barbour	

COUNTY Seneca

DATE 12/8/75

S. R. #53

WEATHER sunny

SEC. I.C.H. #266 - "F"
Field Bk. #23

TEMP. 33°

DESCRIPTION Ties for Control Points

JOB NO.

