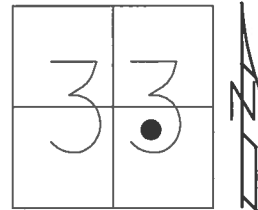


O.D.O.T. DISTRICT 2 SURVEY OFFICE (USE ONLY)

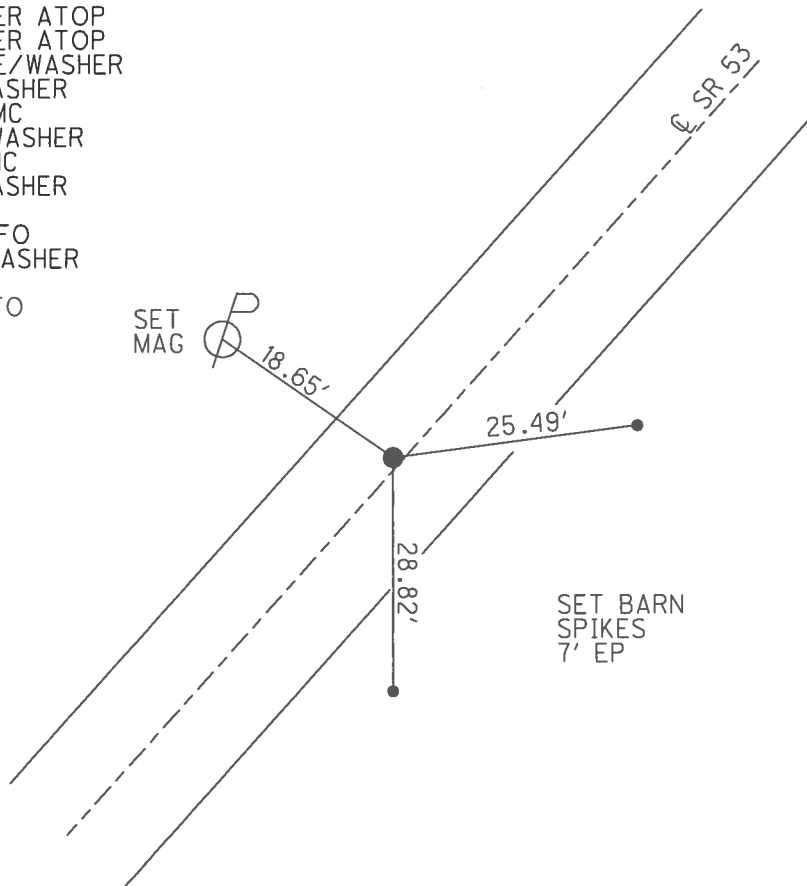
PERSONNEL _____ REFERENCE NO. 4 SHEET 4 OF 41
 NOTES RHOADES DATE 4/26/17 ROUTE SR 53
 H.C. O'DONNELL WEATHER SUNNY COUNTY SENECA
 R.C. RHOADES TEMP. 64° TOWNSHIP SENECA
 _____ SECTION 33
 _____ T 1 N R 14 E

TYPE MONUMENT P.K./WASHER
 ON SURFACE - ~~BELOW~~ ON
 LEFT - C PAV'T - ~~RIGHT~~ 0.5'
10.7' TO RT EDGE PAVEMENT
 S.L.M. 20+99.70



Grid: Northing: 485694.629 Easting: 1760451.798

RECORD:
 STA. 21+00
 P.K./WASHER ATOP
 P.K./WASHER ATOP
 BOAT SPIKE/WASHER
 FD P.K./WASHER
 6/24/97, MC
 SET P.K./WASHER
 10/6/97, MC
 FD P.K./WASHER
 REF4
 4/27/16, JFO
 SET MAG/WASHER
 NEWREF4
 8/31/17, JFO



O.D.O.T. DISTRICT 2 SURVEY OFFICE

PERSONNEL

REFERENCE NO. 4 SHEET 4 OF 34

NOTES Canterbury

H.C. Rousos

R.C. Canterbury

P. Weaver

Rousos - DRAWING

DATE 6/24/99

WEATHER SUNNY

TEMP. +85°F

ROUTE 53

COUNTY SENECA

TOWNSHIP SENECA

SECTION 33

T. 1 N. R. 14 E.

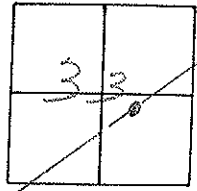
TYPE MONUMENT PK/WASHER

ON SURFACE - BELOW Surface

LEFT - CL PAV'T. - RIGHT ON CL

10.7 TO RT. EDGE PAVEMENT

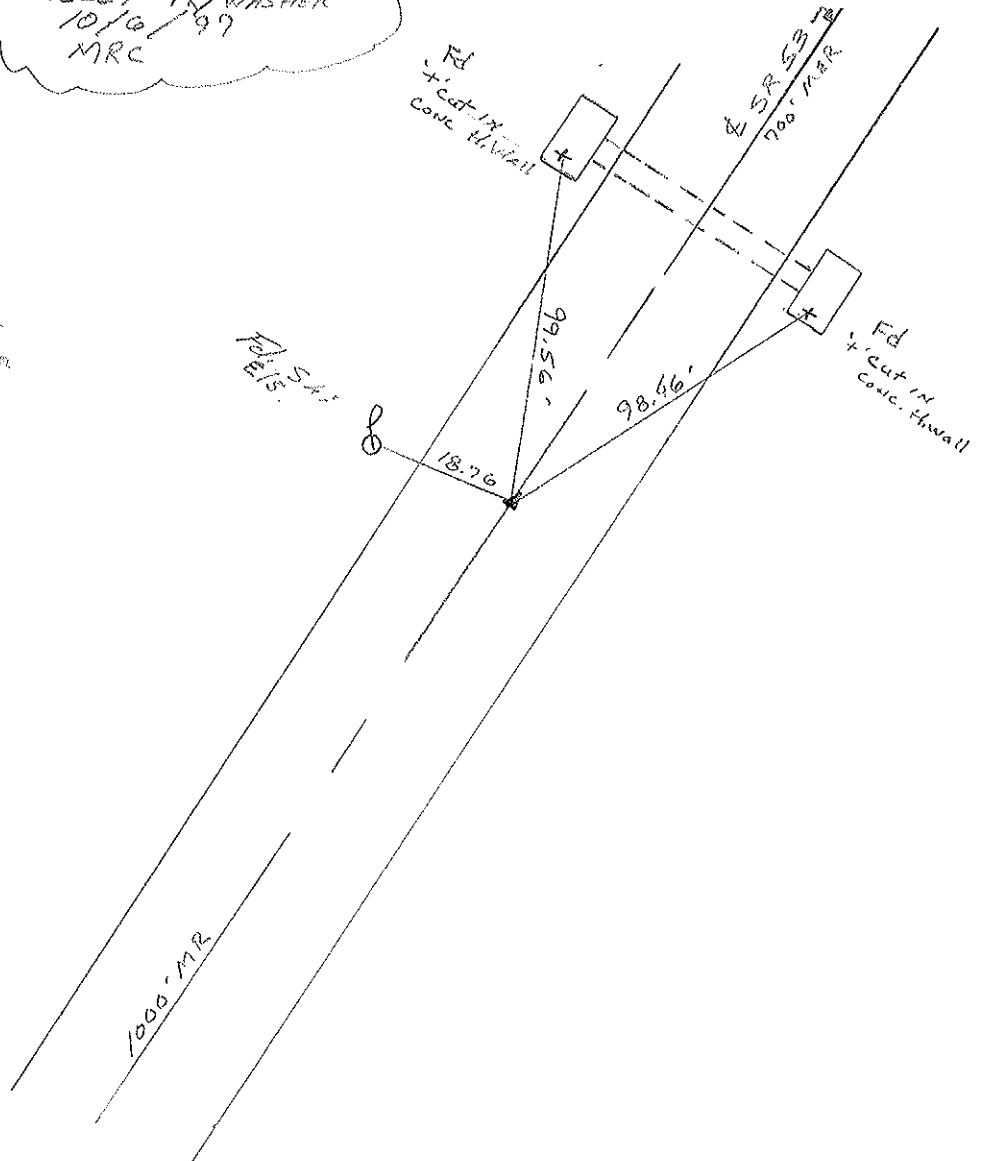
S.L.M. 0+641.77 SLK



RESET PK/WASHER
 10/10/99
 MRC

RECORD:

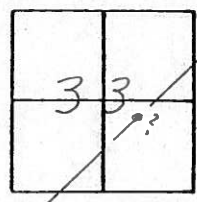
Pit
21100
 PK & WASHER AFD P. SAME
 ATOP BOAT SPACE & WASHER



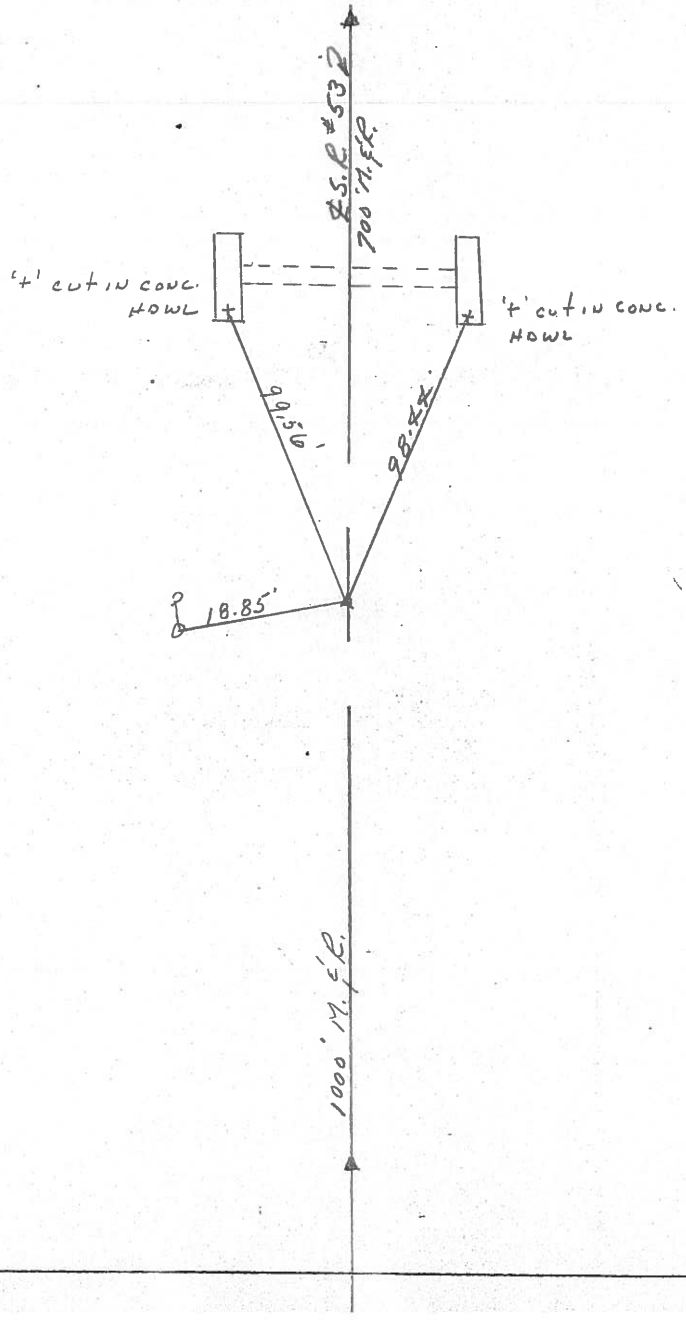
O.D.O.T. DISTRICT 2 SURVEY OFFICE

PERSONNEL _____ REFERENCE NO. 4 SHEET 4 OF _____
 NOTES CRONIN DRAWN 10/27/89
 H.C. RIPPLE DATE 8/30/88 ROUTE # 53
 R.C. BARBOUR WEATHER SUNNY COUNTY SENECA
GEYMAN TEMP. 65° TOWNSHIP SENECA
 SECTION 33
 T I N R I A E

TYPE MONUMENT P.K. & WASHER
 ON SURFACE - BELOW _____
 LEFT - ☉ PAV'T. - RIGHT _____
 TO _____ EDGE PAVEMENT
 S.L.M. 0.3977



P.I.
21+00
P.K. & WASHER ATOP SAME
ATOP BOAT SPIKE & WASHER



1000' M.F.R.

