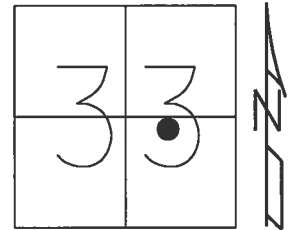


O.D.O.T. DISTRICT 2 SURVEY OFFICE (USE ONLY)

PERSONNEL _____ REFERENCE NO. 5 SHEET 5 OF 41

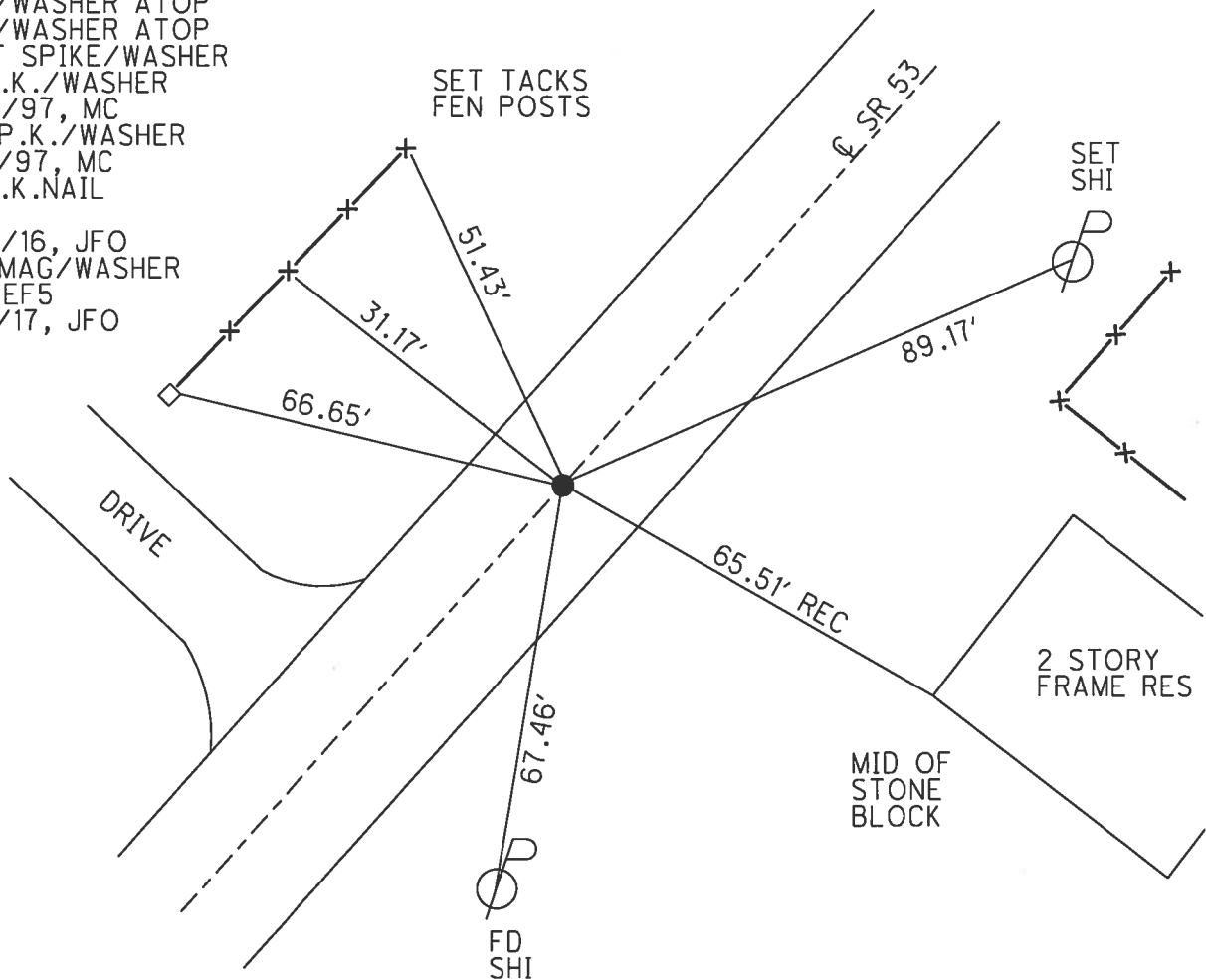
| | | | | | |
|-------|------------------|---------|----------------|----------|---------------|
| NOTES | <u>RHOADES</u> | DATE | <u>4/26/17</u> | ROUTE | <u>SR 53</u> |
| H.C. | <u>O'DONNELL</u> | WEATHER | <u>SUNNY</u> | COUNTY | <u>SENECA</u> |
| R.C. | <u>RHOADES</u> | TEMP. | <u>64°</u> | TOWNSHIP | <u>SENECA</u> |
| | | | | SECTION | <u>33</u> |
| | | | | T | <u>1</u> N |
| | | | | R | <u>14</u> E |

TYPE MONUMENT P.K.NAIL
 ON SURFACE - ~~BELOW~~ ON _____
 LEFT - ℄ PAV'T - ~~RIGHT~~ 0.4'
8.8' TO LT EDGE PAVEMENT
 S.L.M. 27+99.62



Grid: Northing: 486243.857 Easting: 1760885.706

RECORD:
 STA. 28+00
 P.K./WASHER ATOP
 P.K./WASHER ATOP
 BOAT SPIKE/WASHER
 FD P.K./WASHER
 6/24/97, MC
 SET P.K./WASHER
 10/6/97, MC
 FD P.K.NAIL
 REF5
 4/27/16, JFO
 SET MAG/WASHER
 NEWREF5
 8/31/17, JFO



O.D.O.T. DISTRICT 2 SURVEY OFFICE

PERSONNEL

REFERENCE NO. 5

SHEET 5 OF 34

NOTES Canterbury

H.C. Rousos

R.C. Canterbury

J Weaver

Rousos - DRAWING

DATE 6/24/97

WEATHER Sunny

TEMP. +85°F

ROUTE #53

COUNTY SENECA

TOWNSHIP SENECA

SECTION 33

T1 N R 14 E

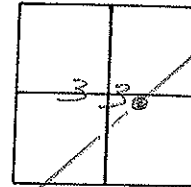
TYPE MONUMENT P.K. & WASHER

ON SURFACE - BELOW Surface

LEFT - C - PAV'T. - RIGHT 0.8' Lt

8.8 TO Lt EDGE PAVEMENT

S.L.M. 0+855.94 SLR

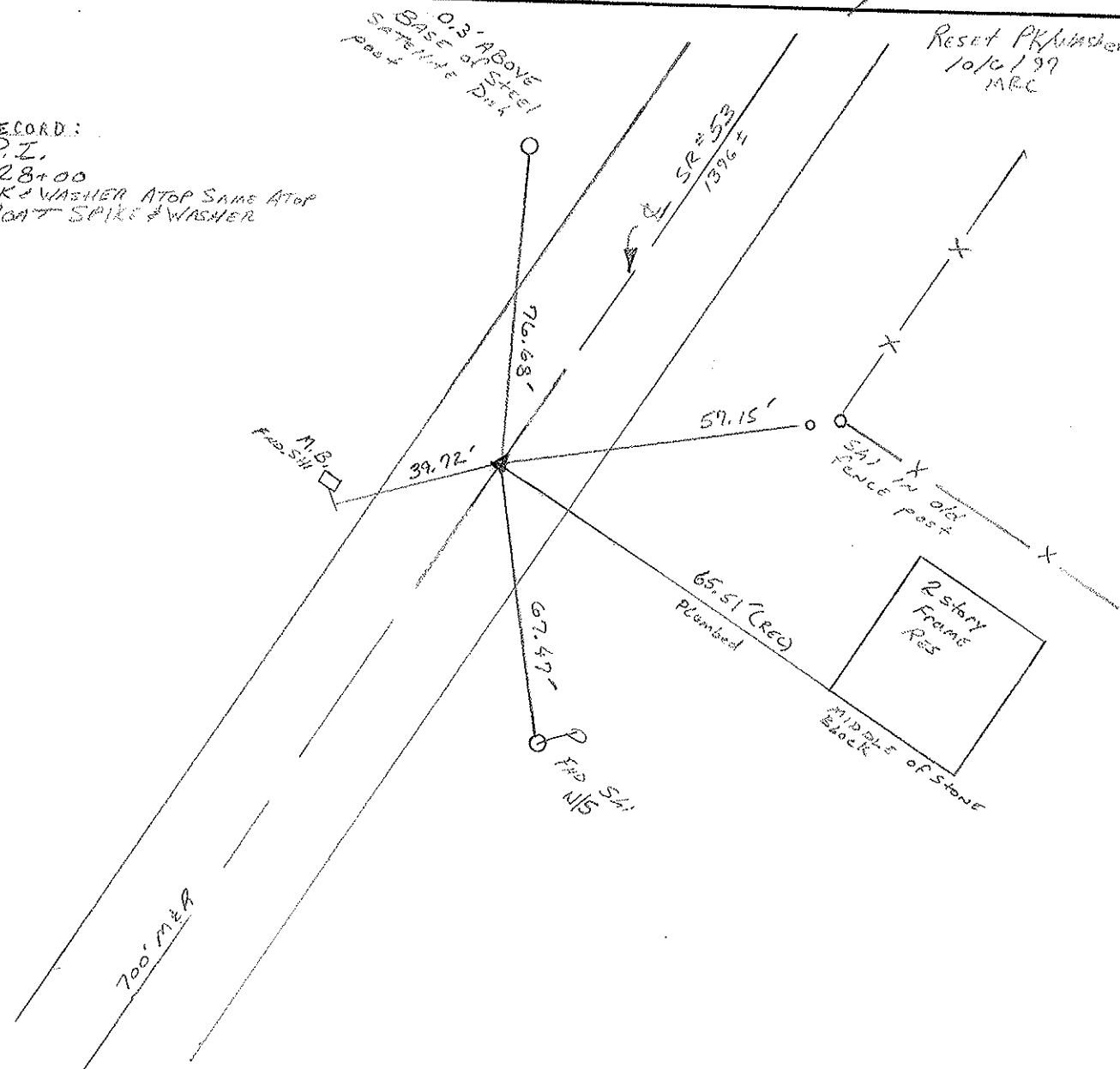


RECORD:

P.Z.

28+00

PK & WASHER ATOP SAME ATOP
BOAT SPIKE & WASHER



O.D.O.T. DISTRICT 2 SURVEY OFFICE

PERSONNEL

REFERENCE NO. 5

SHEET 5 OF

NOTES CRONIN

DRAWN 10/27/89

H.C. RIPPLE

DATE 8/30/88

ROUTE #53

R.C. BARBOUR

WEATHER SUNNY

COUNTY SENECA

GEYMAN

TEMP. 68°

TOWNSHIP SENECA

SECTION 33

T 1 N R 14 E

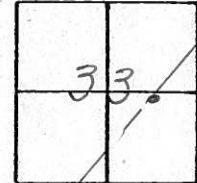
TYPE MONUMENT P.K. & WASHER

ON SURFACE - BELOW

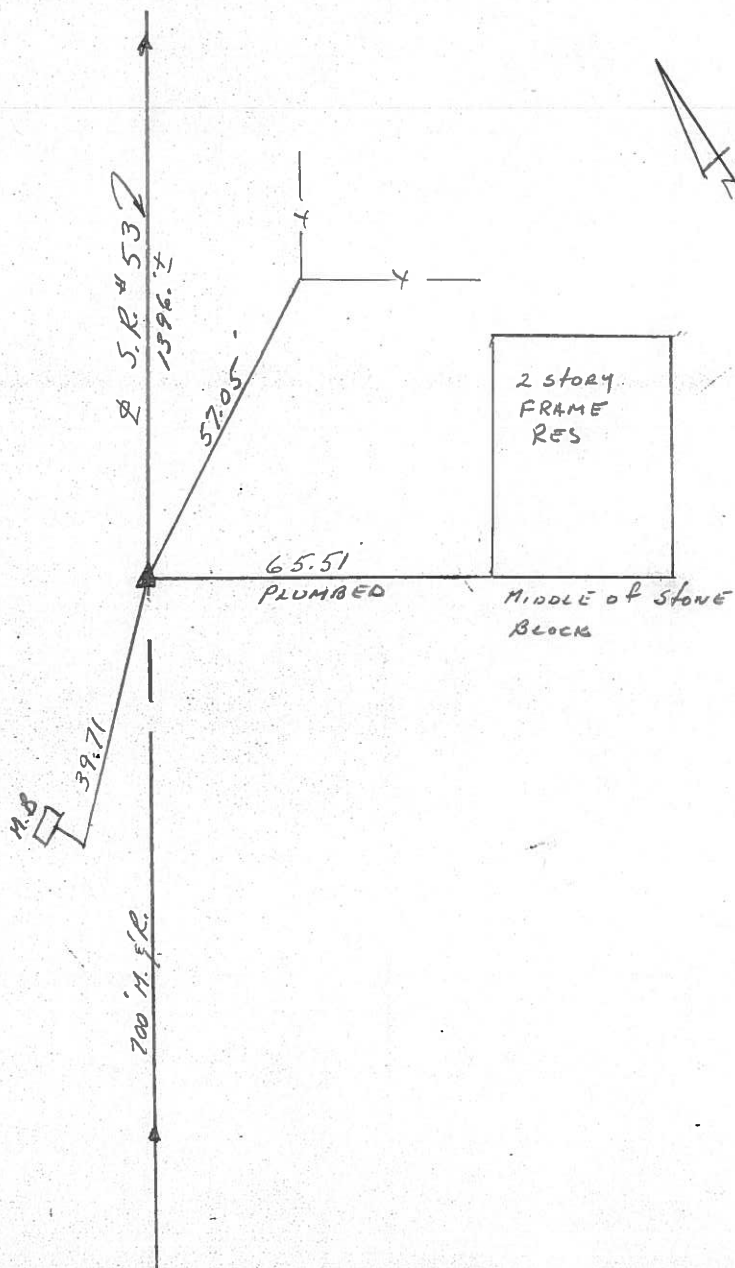
LEFT - PAV'T. - RIGHT

 TO EDGE PAVEMENT

S.L.M. 0.5303



P.F.
28+00
P.K. & WASHER ATOP SAME ATOP
BOAT SPIKE & WASHER



| PERSONNEL | TITLE | PERSONNEL | TITLE |
|-----------|-------|-----------|-------|
| Cronin | | Schneider | |
| Ripple | | Mosser | |
| Geyman | | Barbour | |

COUNTY Seneca DATE 12/8/75

S. R. #53 WEATHER sunny

SEC. I.C.H. #266 "F" TEMP. 36°
Field Bk. #23

DESCRIPTION Ties for Control Points

JOB NO. _____

