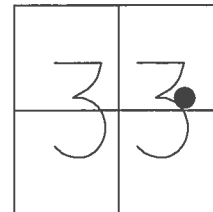


O.D.O.T. DISTRICT 2 SURVEY OFFICE (USE ONLY)

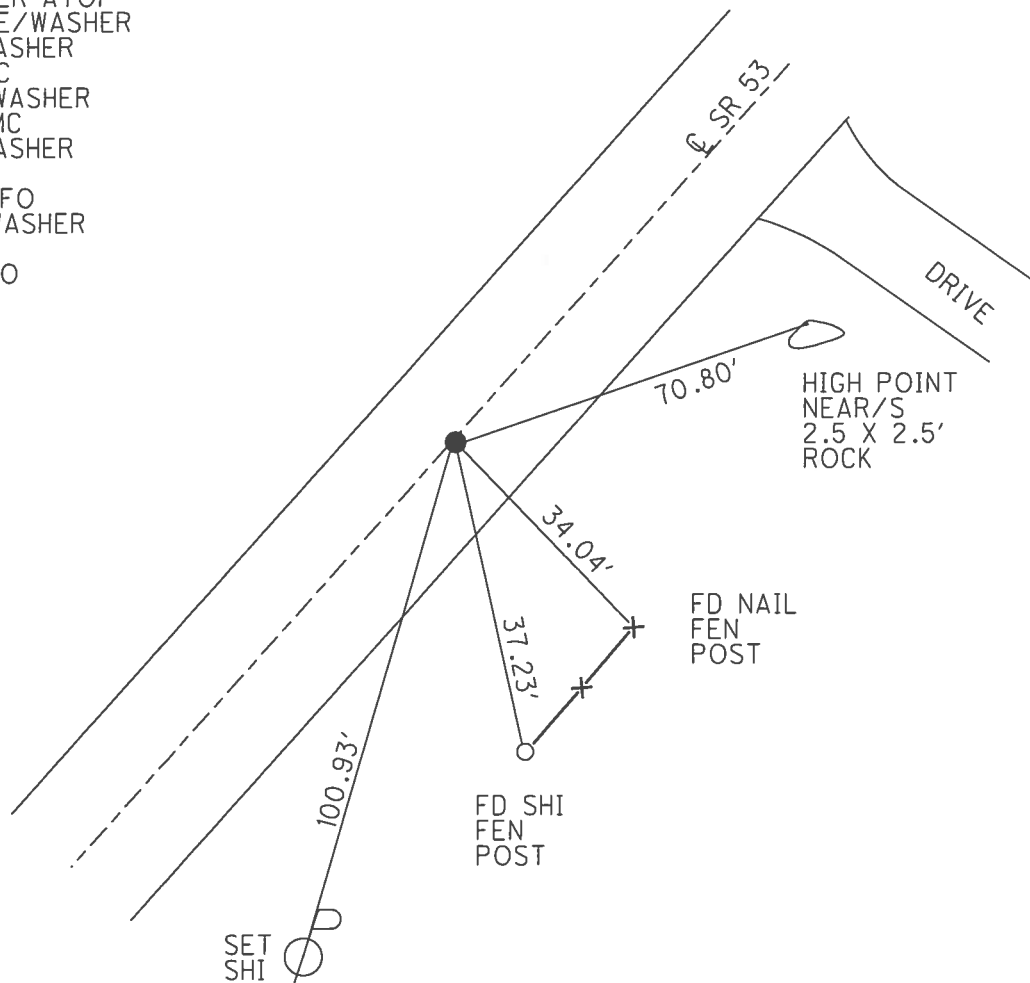
PERSONNEL _____ REFERENCE NO. 6 SHEET 6 OF 41
 NOTES RHOADES DATE 4/26/17 ROUTE SR 53
 H.C. O'DONNELL WEATHER SUNNY COUNTY SENECA
 R.C. RHOADES TEMP. 64° TOWNSHIP SENECA
 _____ SECTION 33
 _____ T 1 N R 14 E

TYPE MONUMENT P.K./WASHER
 ON SURFACE ~~BELOW~~ ON _____
~~LEFT~~ - CL PAV'T - RIGHT 0.2'
10.0' TO RT EDGE PAVEMENT
 S.L.M. 41+96.15

Grid: Northing: 487329.481 Easting: 1761764.213



RECORD:
 STA. 42+00
 P.K./WASHER ATOP
 BOAT SPIKE/WASHER
 FD P.K./WASHER
 7/8/97, MC
 SET P.K./WASHER
 10/6/97, MC
 FD P.K./WASHER
 REF6
 4/27/16, JFO
 SET MAG/WASHER
 NEWREF6
 9/5/17, JFO



O.D.O.T. DISTRICT 2 SURVEY OFFICE

PERSONNEL

REFERENCE NO. 6

SHEET 6 OF 34

NOTES Canterbury

H.C. Rousos

R.C. Canterbury

M Weaver

ROUSOS - DRAWING

DATE 7. 8. 99

WEATHER Sunny

TEMP. + 80°

ROUTE 53

COUNTY SENECA

TOWNSHIP SENECA

SECTION 33

T1 N R 14 E

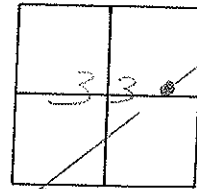
TYPE MONUMENT P.K. Washer

ON SURFACE - BELOW 4" BELOW

LEFT - 0 PAV'T. - RIGHT 0.2' RT

10.0 TO RT EDGE PAVEMENT

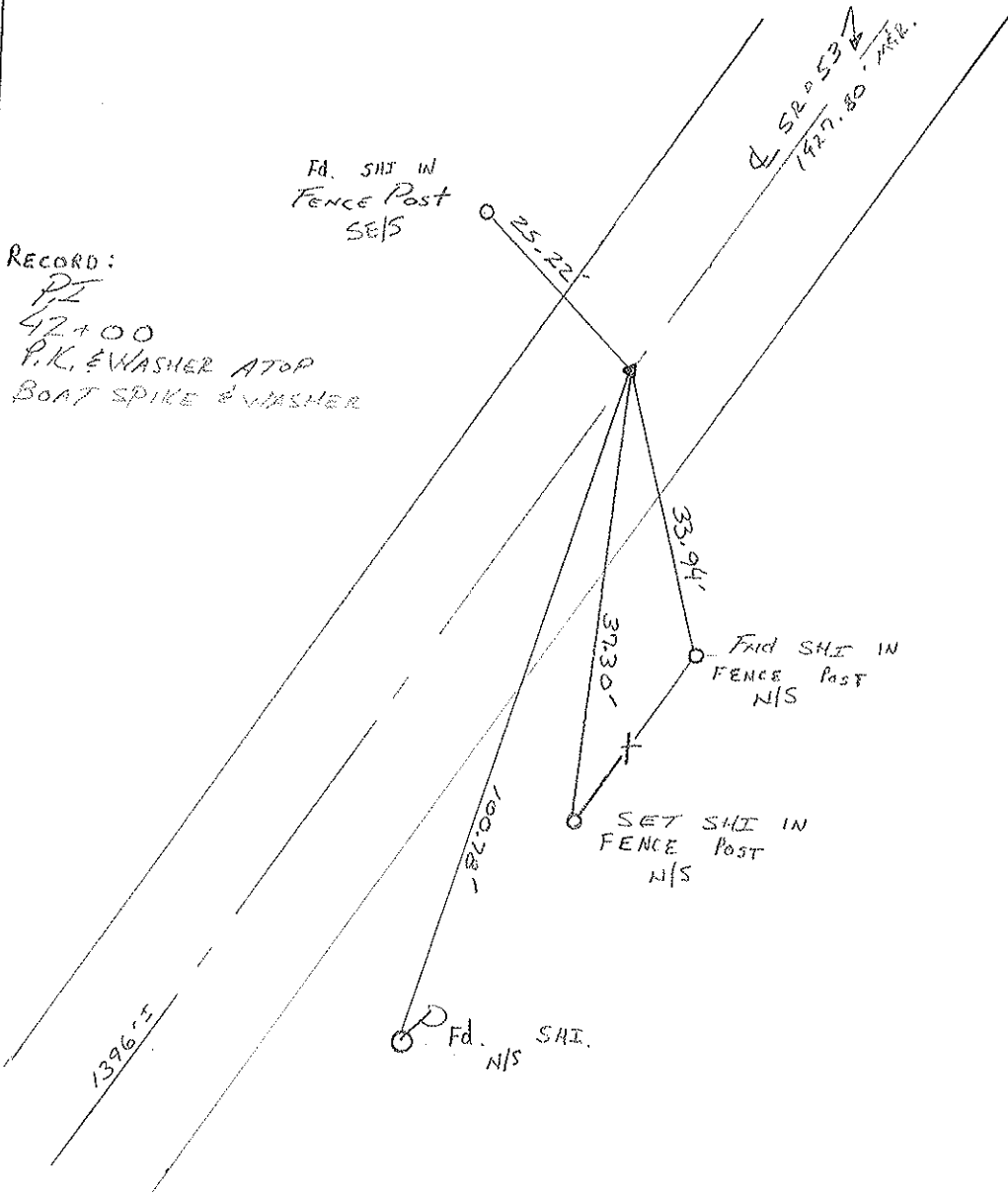
S.L.M. 1 + 283.24 SLK



RECORD:

PZ
42+00
P.K. & WASHER ATOP
BOAT SPIKE & WASHER

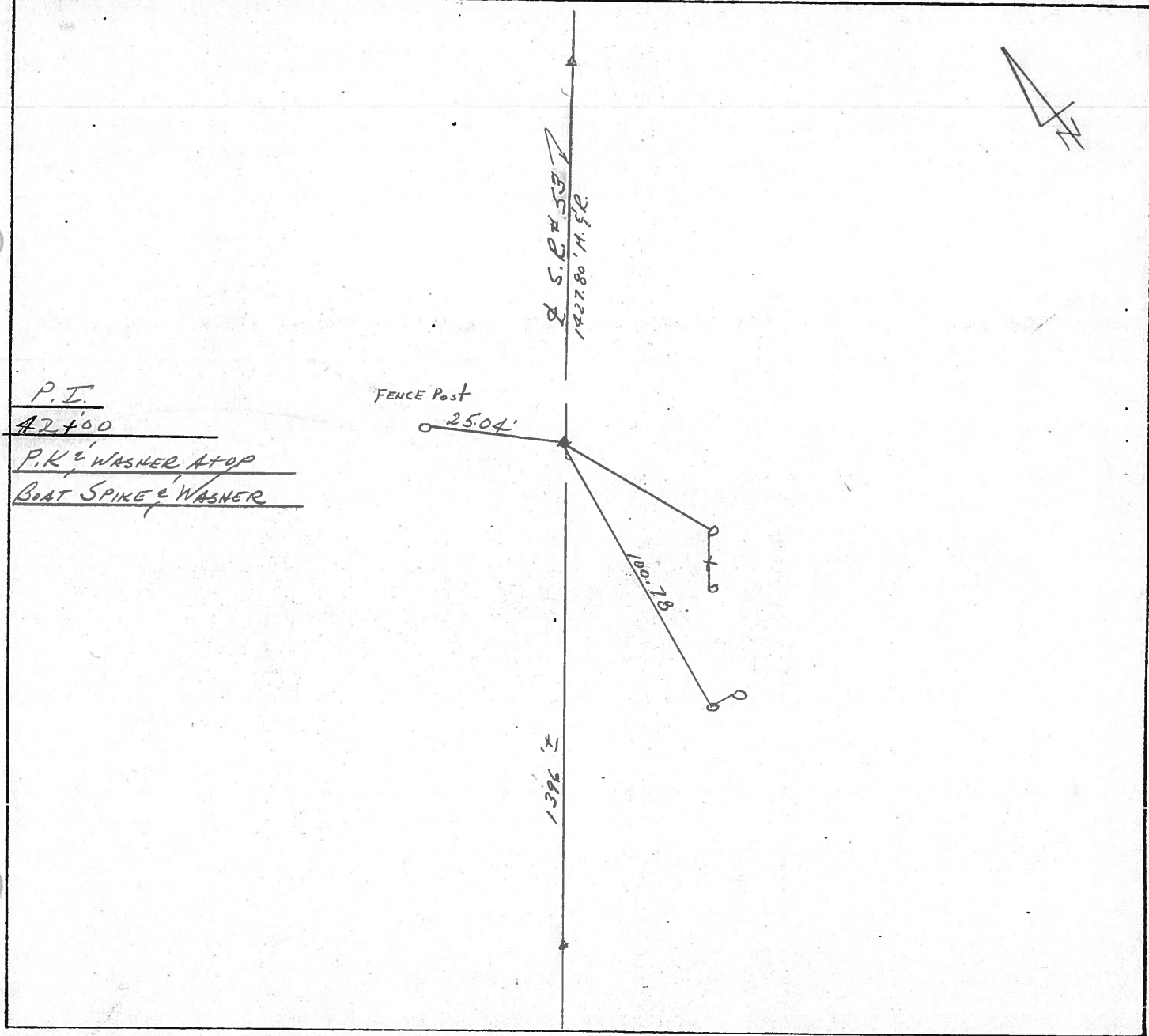
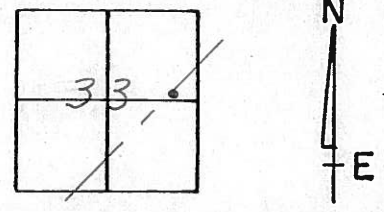
Reset P.K. & Washer
 10/10/99
 MRC



O.D.O.T. DISTRICT 2 SURVEY OFFICE

PERSONNEL _____ **REFERENCE NO.** 6 **SHEET** 6 **OF** _____
NOTES CRONIN **DRAWN** 10/27/89
H.C. RIPPLE **DATE** 8/30/89 **ROUTE** #53
R.C. BARBOUR **WEATHER** SUNNY **COUNTY** SENECA
GEYMAN **TEMP.** 68° **TOWNSHIP** SENECA
SECTION 33
T I N R I A E

TYPE MONUMENT P.K. & WASHER
ON SURFACE - BELOW 2"
LEFT - & PAV'T. - RIGHT _____
TO EDGE PAVEMENT
S.L.M. 0.7954



PERSONNEL	TITLE	PERSONNEL	TITLE
Cronin		Schneider	
Ripple		Mosser	
Geyman		Barbour	

COUNTY Seneca

DATE 12/8/75

S. R. #53

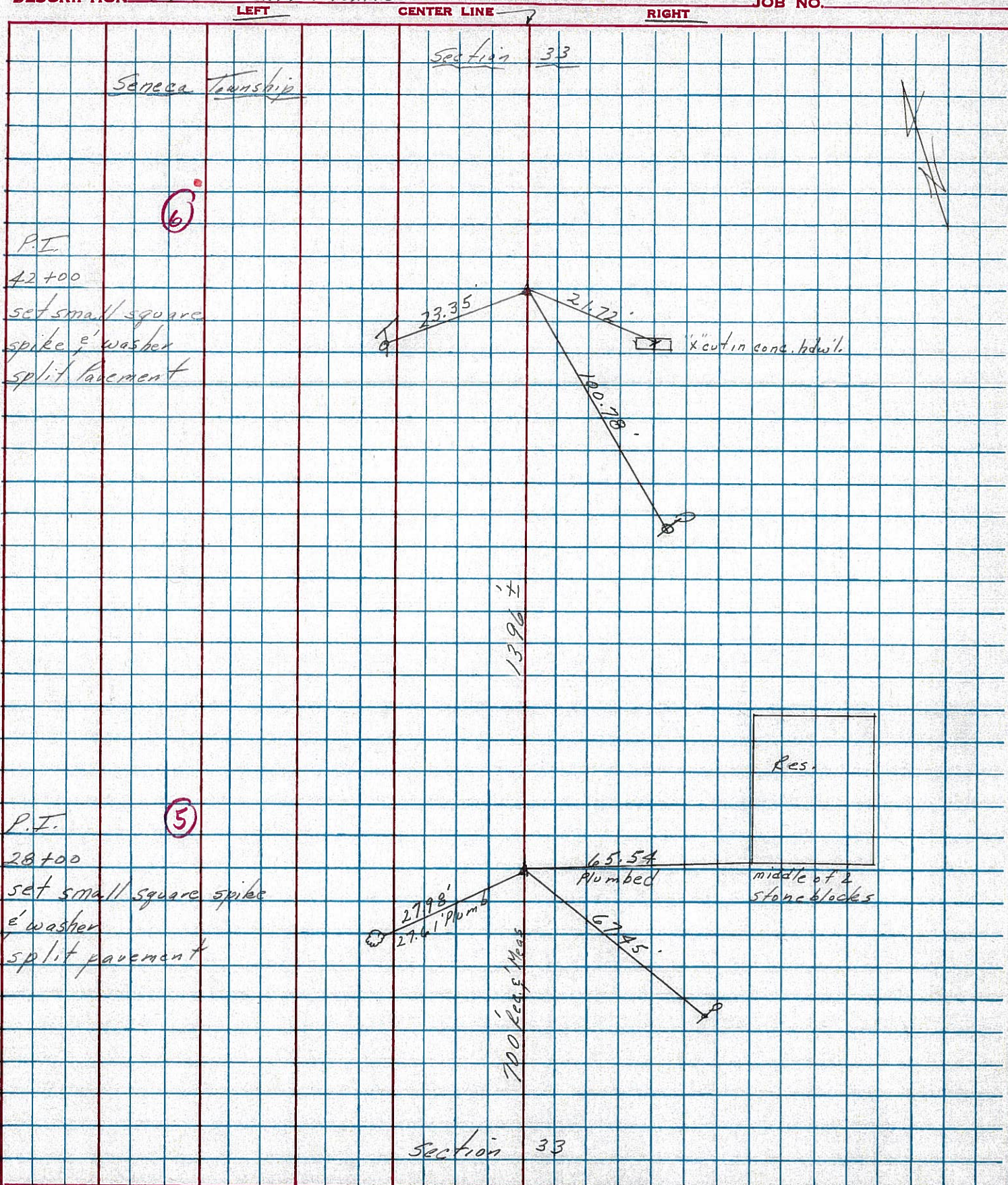
WEATHER sunny

SEC. I.C.H. #266 "F"
Field Bk. #23

TEMP 36°

DESCRIPTION Ties for Control Points

JOB NO.



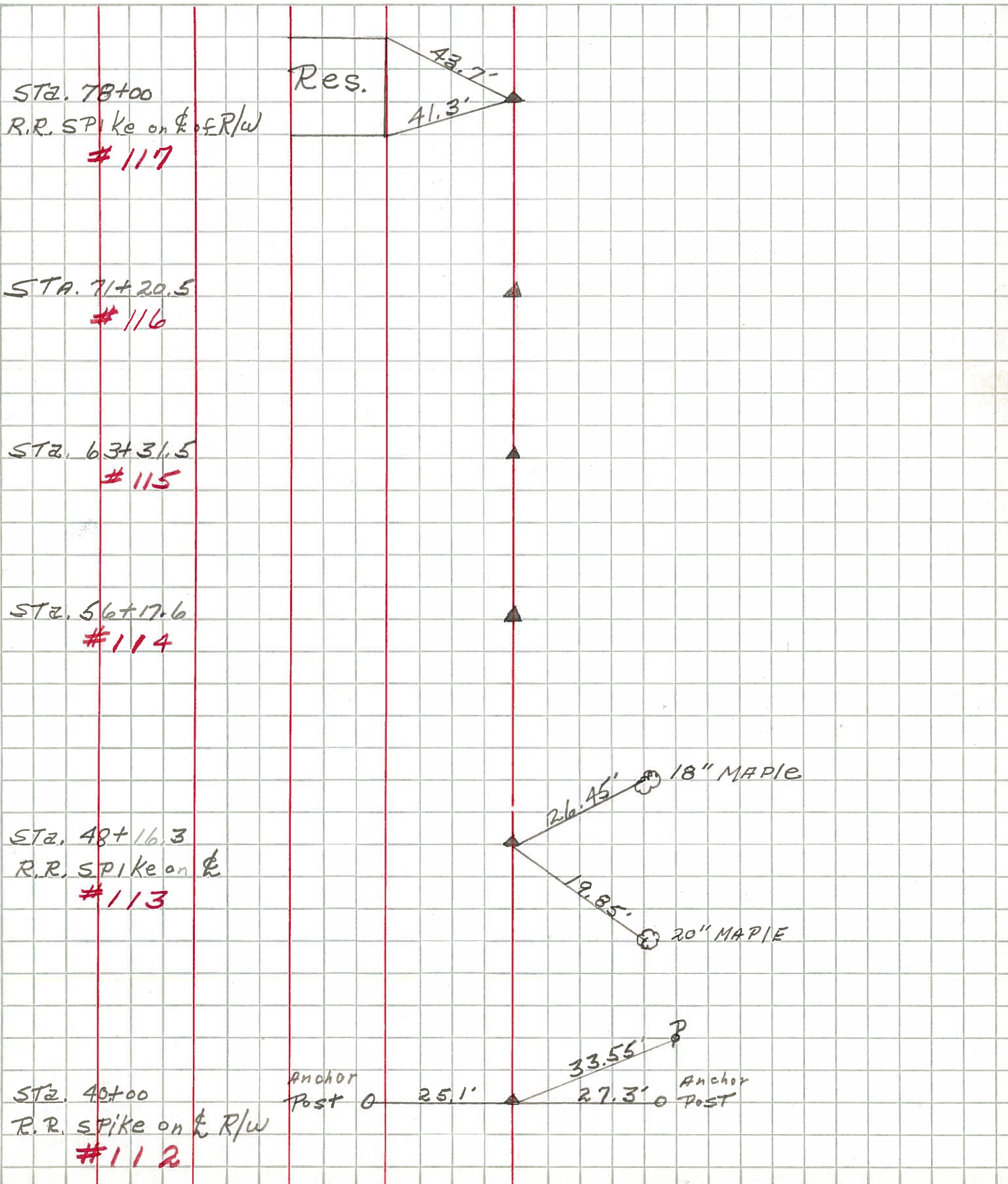
PERSONNEL TITLE PERSONNEL TITLE

COUNTY Seneca DATE 1-17-63

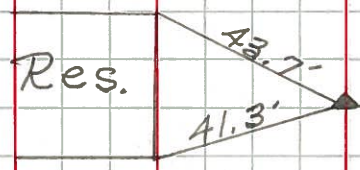
S. R. # 53 WEATHER

SEC. 016 53 TEMP.

DESCRIPTION LEFT CENTER LINE RIGHT JOB NO.



Sta. 78+00
R.R. SPIKE on E. of R/W
#117

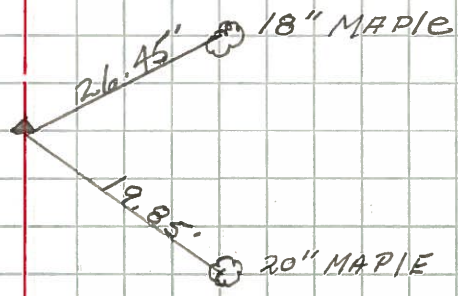


Sta. 71+20.5
#116

Sta. 63+31.5
#115

Sta. 56+17.6
#114

Sta. 48+16.3
R.R. SPIKE on E.
#113



Sta. 40+00
R.R. SPIKE on E. of R/W
#112

