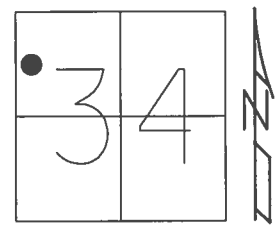


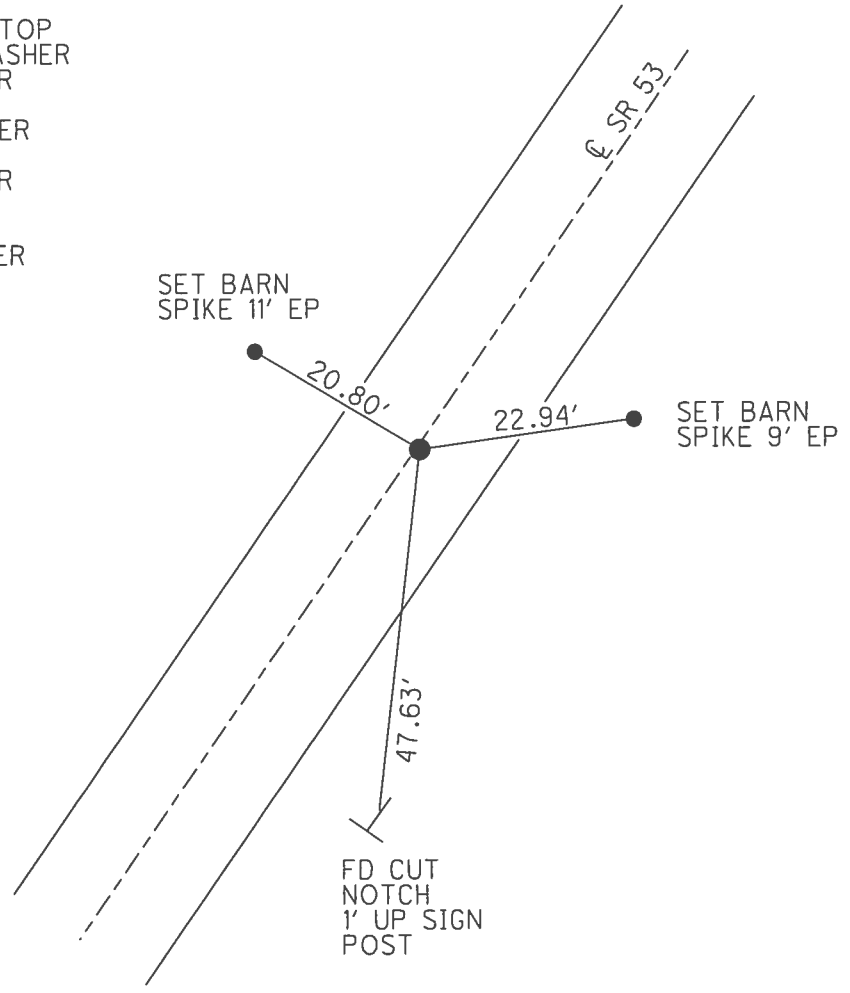
O.D.O.T. DISTRICT 2 SURVEY OFFICE (USE ONLY)

PERSONNEL \_\_\_\_\_ REFERENCE NO. 8 SHEET 8 OF 41  
 NOTES RHOADES DATE 4/26/17 ROUTE SR 53  
 H.C. O'DONNELL WEATHER SUNNY COUNTY SENECA  
 R.C. RHOADES TEMP. 64° TOWNSHIP SENECA  
 \_\_\_\_\_ SECTION 34  
 \_\_\_\_\_ T 1 N R 14 E

TYPE MONUMENT P.K./WASHER  
 ON SURFACE - ~~BELOW~~ ON  
~~LEFT~~ - C PAV'T - RIGHT 0.2'  
9.4' TO RT EDGE PAVEMENT  
 S.L.M. 58+93.41  
 Grid: Northing: 488677.295 Easting: 1762793.213



RECORD: P.I.  
 $\Delta = 00^\circ 21' 00''$   
 STA. 58+97.50  
 P.K./WASHER ATOP  
 BOAT SPIKE/WASHER  
 FD P.K./WASHER  
 6/24/97, MC  
 SET P.K./WASHER  
 10/6/97, MC  
 FD P.K./WASHER  
 REF8  
 4/27/16, JFO  
 SET MAG/WASHER  
 NEWREF8  
 9/5/17, JFO



# O.D.O.T. DISTRICT 2 SURVEY OFFICE

PERSONNEL

REFERENCE NO. 8

SHEET 8 OF 34

NOTES Canterbury

H.C. Rousas

R.C. Canterbury

M. Weaver  
ROUSAS - DRAWING

DATE 6/24/99

WEATHER Sunny

TEMP. 89°

ROUTE #53

COUNTY SENECA

TOWNSHIP SENECA

SECTION 34

T I N R I E

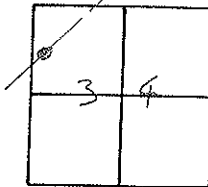
TYPE MONUMENT PK, WASHER

ON SURFACE - BELOW SURFACE

LEFT - 0 PAV'T. - RIGHT 0.2' RT

9.4' TO RT EDGE PAVEMENT

S.L.M. 1+803.5 SLK

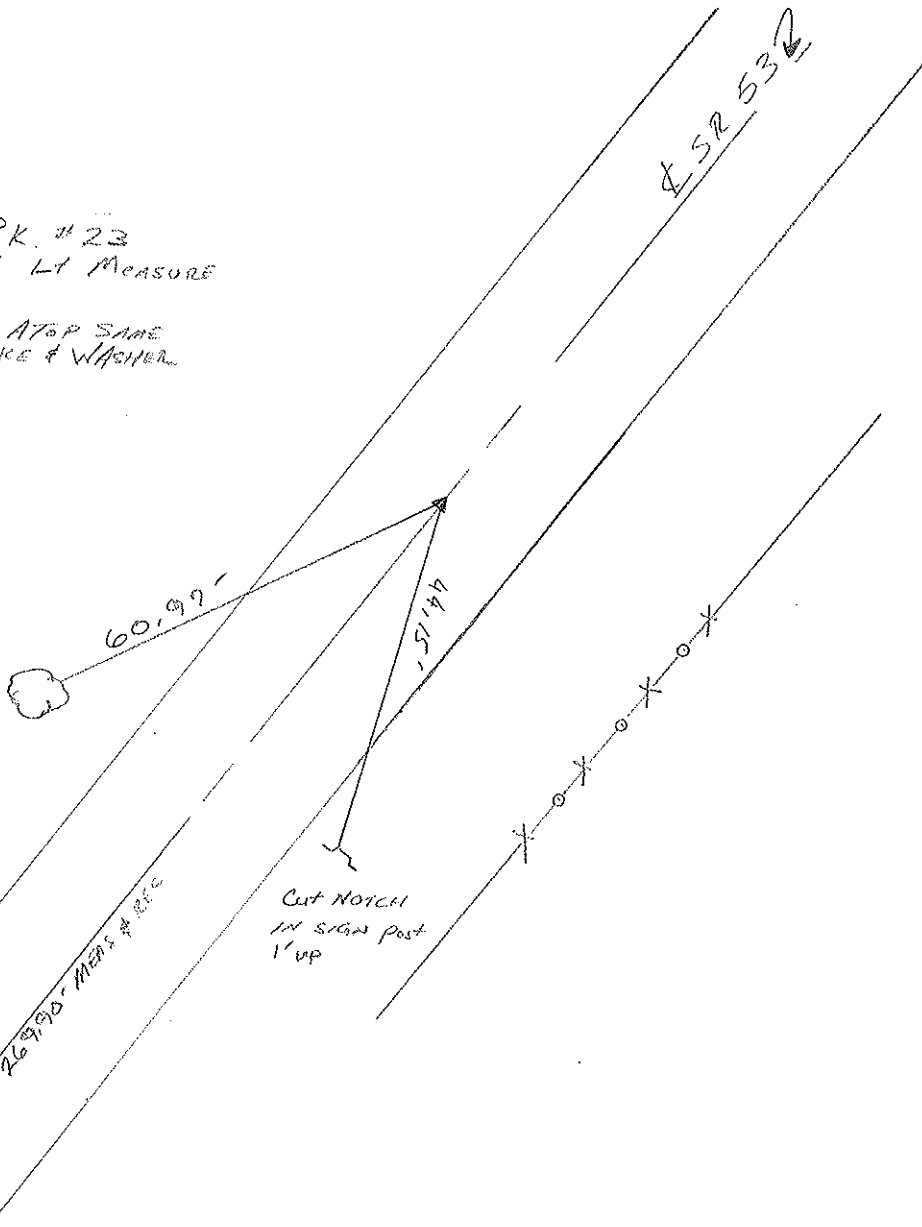


RECORD:

Ref. Field BK. #23  
 $\Delta = 0.0^\circ 21' 00''$  LT MEASURE  
 P.I.  
 SB+99.50  
 P.K. # WASHER ATOP SAME  
 ATOP BOAT SPIKE & WASHER

RESET P.K. WASHER  
 10/6/99  
 M.R.C.

SET SHI.  
 IN TRIPLE  
 BLM CLUSTER  
 NELS



# O.D.O.T. DISTRICT 2 SURVEY OFFICE

PERSONNEL

NOTES CRONIN  
 H.C. RIPPLE  
 R.C. BARBOUR  
GEYMAN

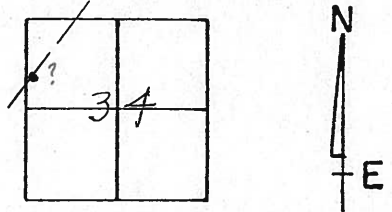
REFERENCE NO. 8

DRAWN 10/27/89  
 DATE 8/30/88  
 WEATHER SUNNY  
 TEMP. 70°

SHEET 8 OF     

ROUTE #53  
 COUNTY SENECA  
 TOWNSHIP SENECA  
 SECTION 34  
T 1 N R 14 E

TYPE MONUMENT P.K. & WASHER  
 ON SURFACE - BELOW       
 LEFT -      PAV'T. - RIGHT       
     TO      EDGE PAVEMENT  
 S.L.M. 1.117

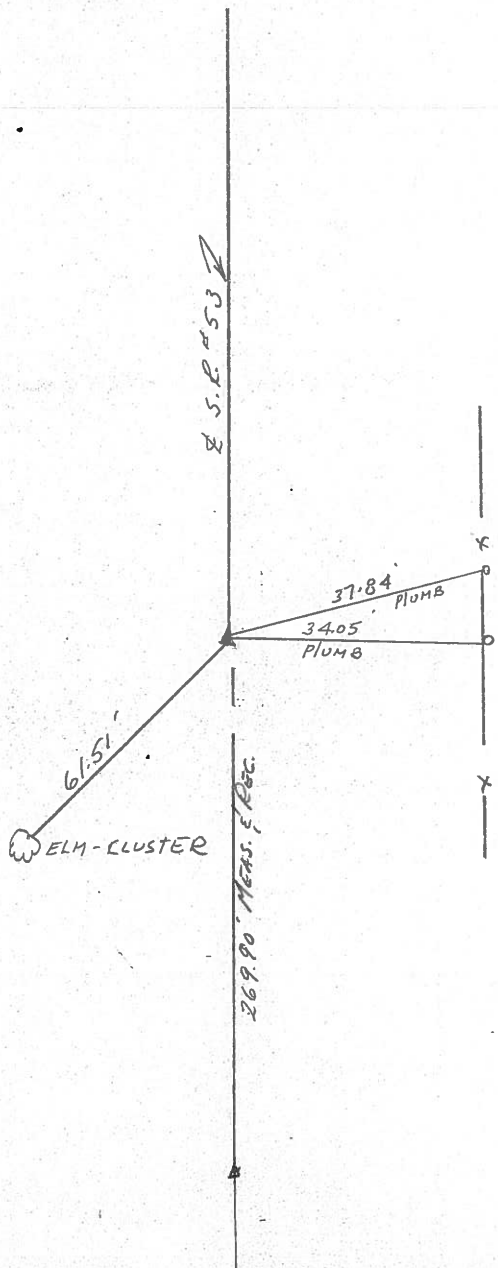


REF. FIELD BK. #23

$\Delta = 0^{\circ} 21' 00''$  LT. MEAS.

P.I.  
 58497.50

P.K. & WASHER ATOP SAME  
 ATOP BOAT SPIKE & WASHER





PERSONNEL	TITLE	PERSONNEL	TITLE
Cronin		Schneider	
Ripple		Messer	
Geyman		Barbour	

COUNTY Seneca DATE 12/8/75

S. R. # 53 WEATHER sunny

SEC. I.C.H #266 "F" TEMP. 36°

Field Bk # 23

DESCRIPTION Ties for Control Points

JOB NO. \_\_\_\_\_

