

O.D.O.T. DISTRICT 2 SURVEY OFFICE (USE ONLY)

PERSONNEL _____ REFERENCE NO. 9 SHEET 9 OF 41

NOTES RHOADES DATE 4/26/17 ROUTE SR 53
 H.C. O'DONNELL WEATHER SUNNY COUNTY SENECA
 R.C. RHOADES TEMP. 64° TOWNSHIP SENECA
 _____ SECTION 34
 _____ T 1 N R 14 E

TYPE MONUMENT MONBOX

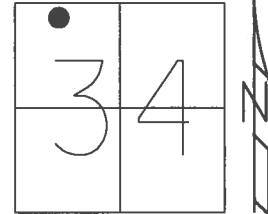
ON SURFACE - ~~BELOW~~ ON _____

LEFT - ☉ PAV'T - ~~RIGHT~~ 1.1'

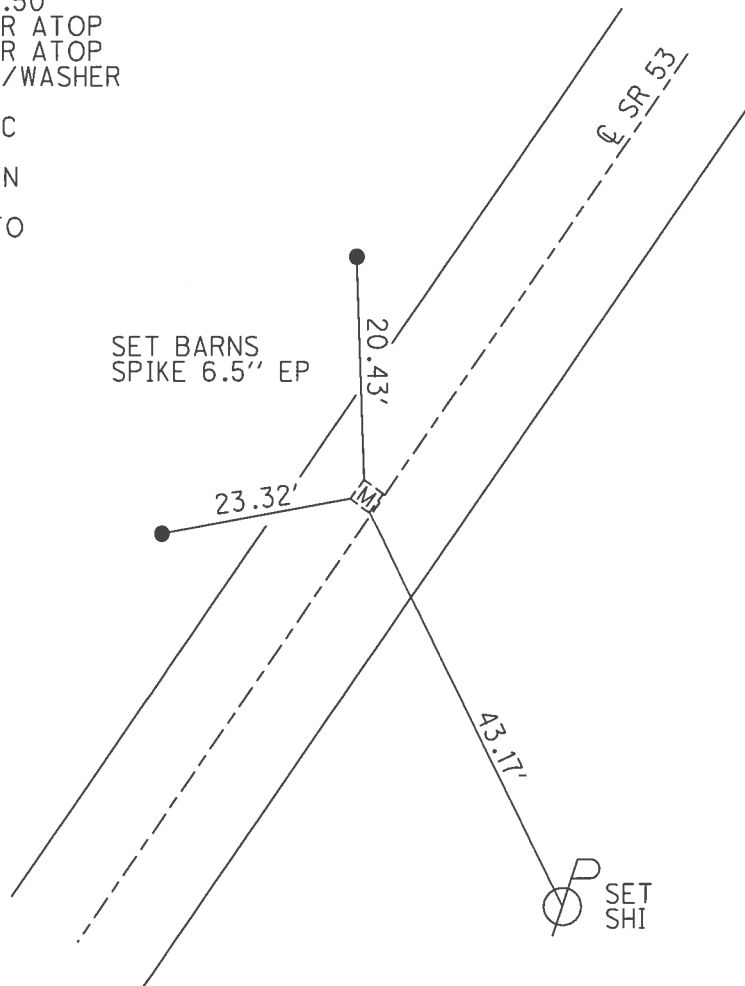
10.5' TO LT EDGE PAVEMENT

S.L.M. 64+24.13

Grid: Northing: 489131.801 Easting: 1763067.292



RECORD: P.I.
 STA. 64+28.50
 P.K./WASHER ATOP
 P.K./WASHER ATOP
 BOAT SPIKE/WASHER
 FD MONBOX
 6/24/97, MC
 FD MONBOX
 W/ 3/4" IPIN
 REF9
 4/27/16, JFO



O.D.O.T. DISTRICT 2 SURVEY OFFICE

PERSONNEL

REFERENCE NO. 9

SHEET 9 OF 34

NOTES Canterbury

H.C. Rousos

DATE 6/24/97

ROUTE #53

R.C. Canterbury

WEATHER Sunny

COUNTY SENECA

M. Weaver

TEMP. 90°

TOWNSHIP SENECA

Rousos - DRAWING

SECTION 34

T. 1 N. R. 14 W.

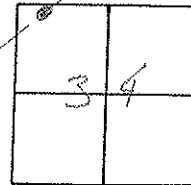
TYPE MONUMENT Mon. Box

ON SURFACE - BELOW SURFACE

LEFT - 0 PAV'T. - RIGHT 1.1' Lt

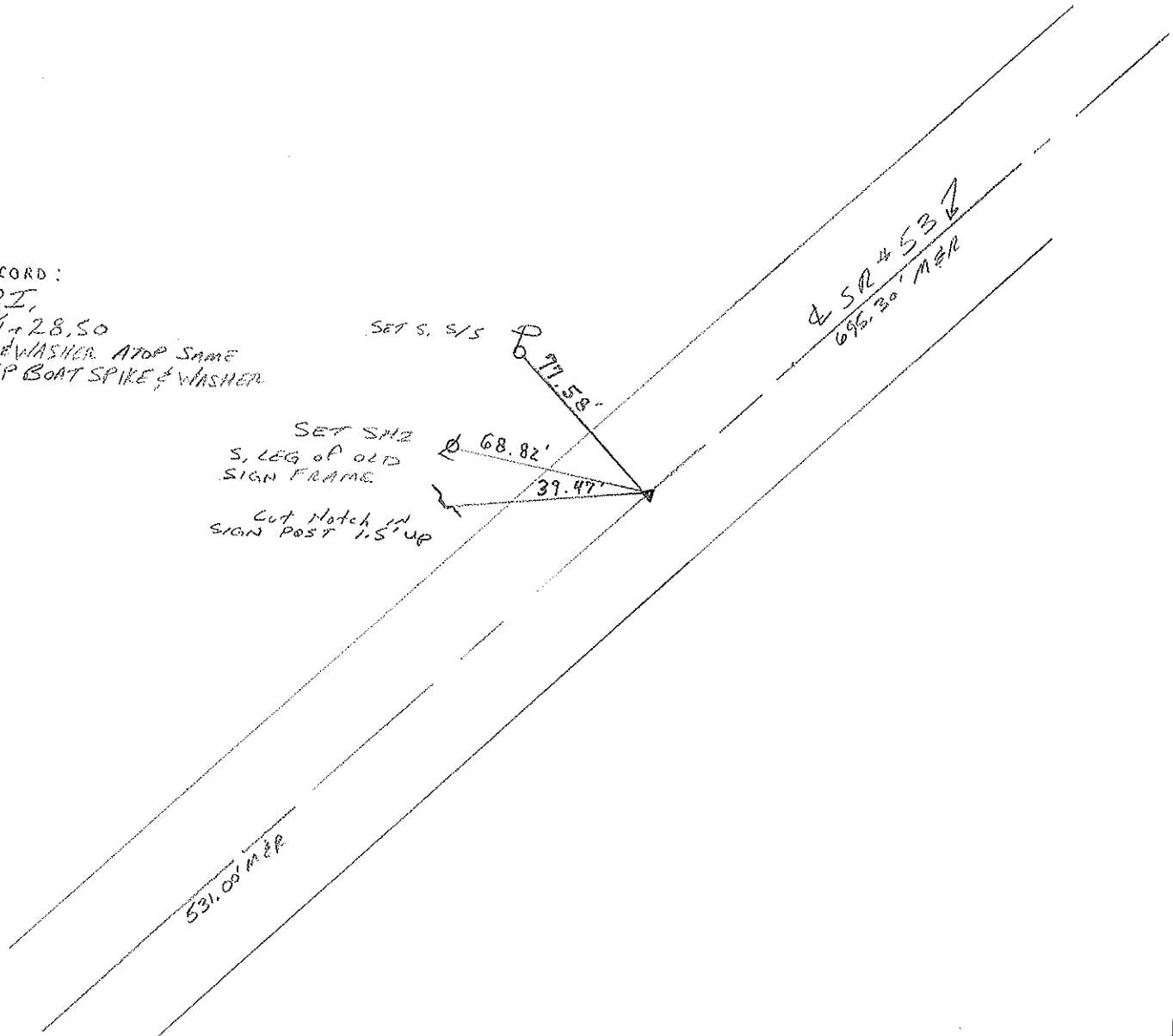
10.5' to Lt EDGE PAVEMENT

S.L.M. 1+965.24 SLK



RECORD:

P.I.
69+28.50
PK WASHER ATOP SAME
ATOP BOAT SPIKE & WASHER



O.D.O.T. DISTRICT 2 SURVEY OFFICE

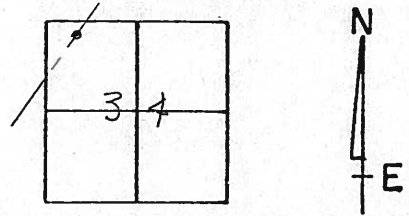
PERSONNEL

NOTES CRONIN
 H.C. RIPPLE
 R.C. BARBOUR
GEYMAN

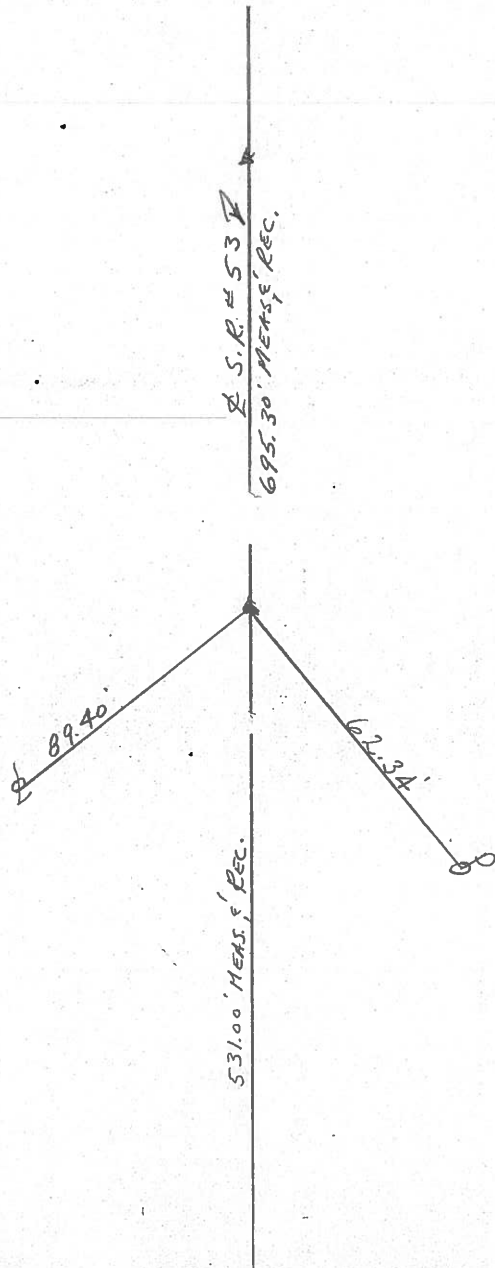
REFERENCE NO. 9
 DRAWN 10/27/89
 DATE 8/30/88
 WEATHER SUNNY
 TEMP. 70°

SHEET 9 OF _____
 ROUTE # 53
 COUNTY SENECA
 TOWNSHIP SENECA
 SECTION 34
T 1 N R 14 E

TYPE MONUMENT P.K. WASHER
 ON SURFACE - BELOW _____
 LEFT - CL PAV'T. - RIGHT _____
 TO _____ EDGE PAVEMENT
 S.L.M. 1.2175



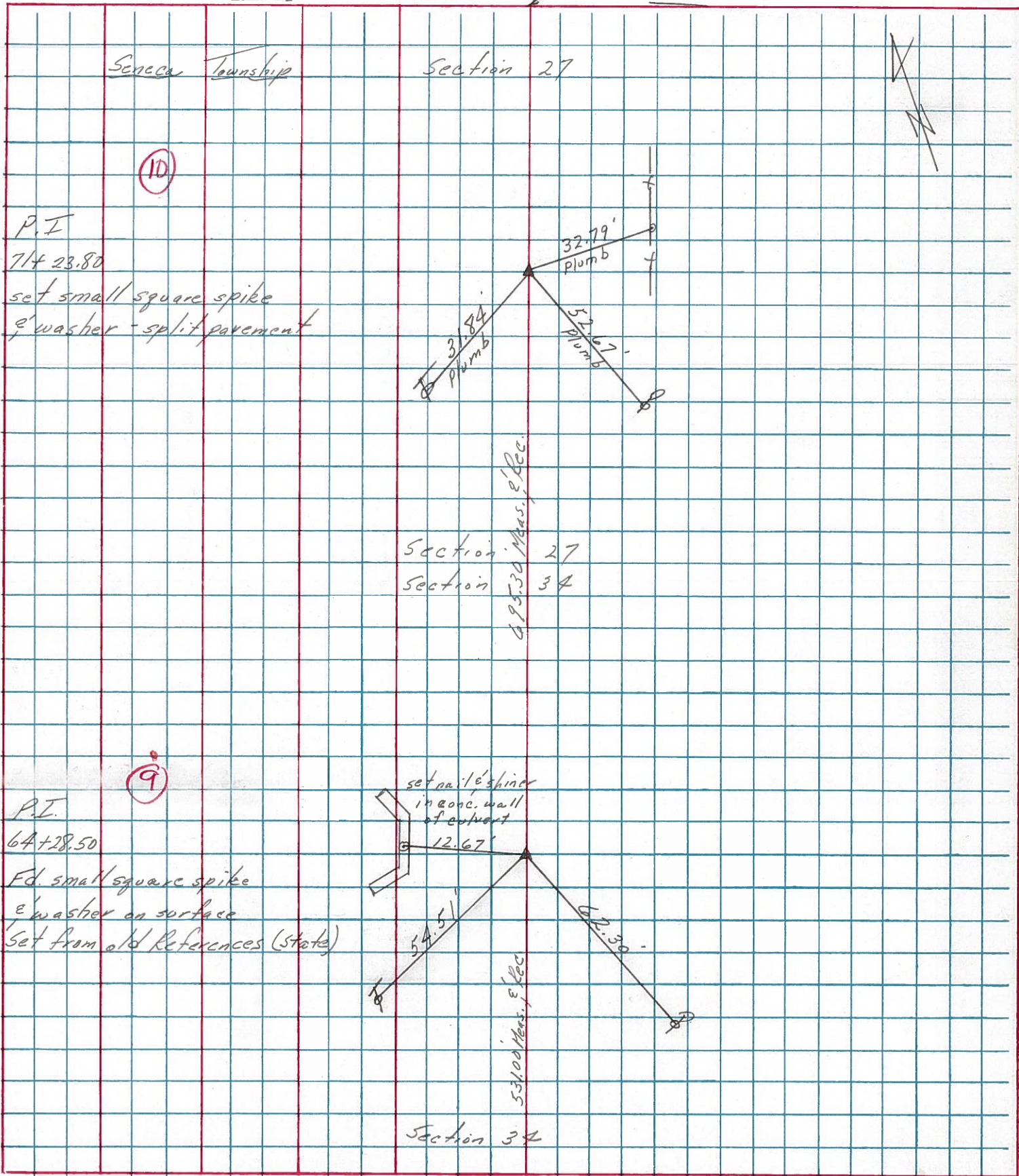
P.I.
64+28.50
P.K. WASHER ATOP SAME
ATOP BOAT SPIKE WASHER



PERSONNEL	TITLE	PERSONNEL	TITLE
Cronin		Schneider	
Ripple		Mosser	
Geyman		Barbour	

COUNTY Seneca DATE 12/8/75
 S. R. #53 WEATHER Sunny
 SEC. I.C.H #266 "F" TEMP. 36°
Field Bk. #23

DESCRIPTION Ties for Control Point JOB NO. _____

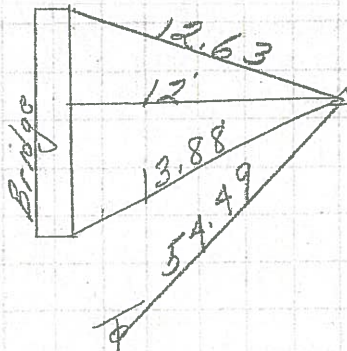


PERSONNEL	TITLE	PERSONNEL	TITLE	COUNTY	DATE
<u>Schneider</u>				<u>Seneca</u>	<u>8-28-69</u>
<u>Masser</u>				S. R. <u>53</u>	WEATHER <u>Fair</u>
<u>Barbour</u>				SEC. <u>Wyandot Co. Line N.</u>	TEMP. <u>85°</u>
<u>Potts</u>					

DESCRIPTION Ties for Control Points JOB NO. _____

9

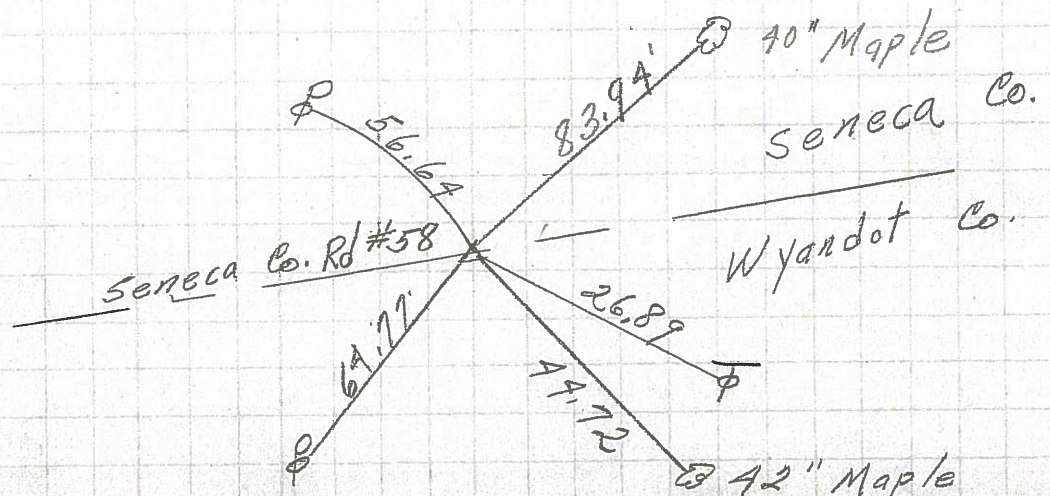
P.I.
 64+28.5
 $\Delta = 0^{\circ}59'$ Rt.
 Br. # 01.21
 Small spk.



8351

1

P.I.
 0+00
 $\Delta = 70^{\circ}30'$ Rt.
 P.K. Nail
 2" down



8350