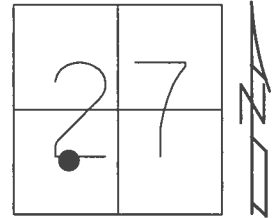


O.D.O.T. DISTRICT 2 SURVEY OFFICE (USE ONLY)

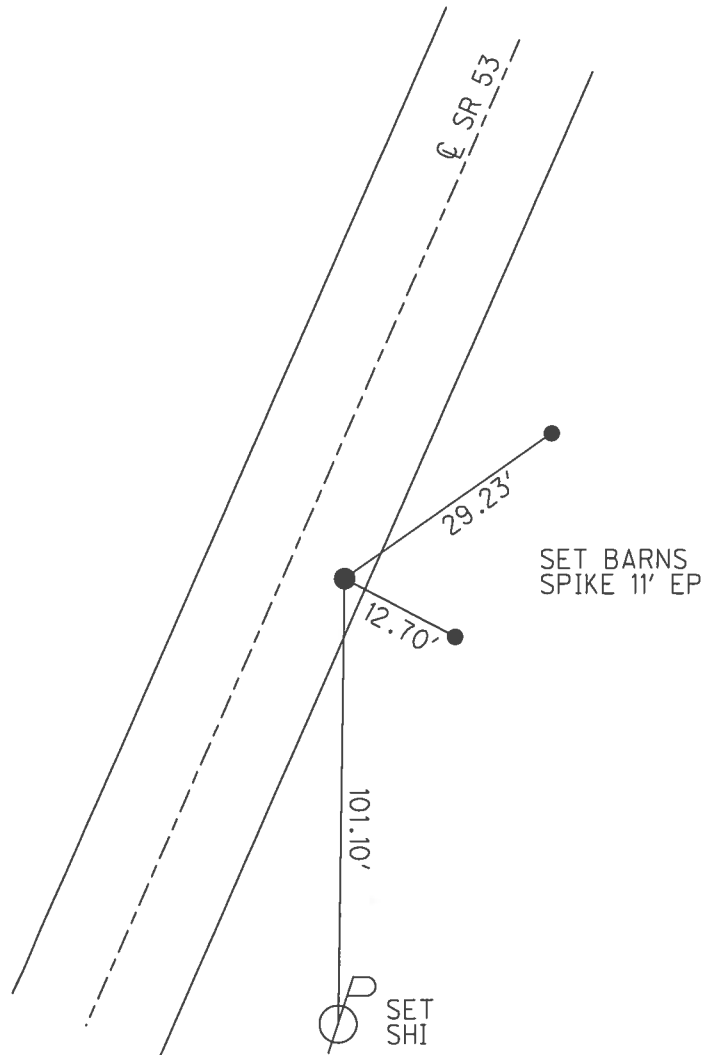
PERSONNEL _____ REFERENCE NO. 11 SHEET 11 OF 41
 NOTES RHOADES DATE 4/25/17 ROUTE SR 53
 H.C. O'DONNELL WEATHER SUNNY COUNTY SENECA
 R.C. RHOADES TEMP. 71° TOWNSHIP SENECA
 _____ SECTION 27
 _____ T 1 N R 14 E

TYPE MONUMENT P.K./WASHER
 ON SURFACE - ~~BELOW~~ ON _____
~~LEFT~~ - C PAV'T - RIGHT 7.7'
2' TO RT EDGE PAVEMENT
 S.L.M. 78+98.89



Grid: Northing: 490385.888 Easting: 1763843.301

RECORD: P.I.
 STA. 79+03.30
 P.K./WASHER ATOP
 P.K./WASHER ATOP
 BOAT SPIKE
 FD P.K./WASHER
 6/24/97, MC
 SET P.K./WASHER
 10/6/97, MC
 FD P.K./WASHER
 REF11
 4/27/16, JFO
 SET MAG/WASHER
 NEWREF11
 9/5/17, JFO



O.D.O.T. DISTRICT 2 SURVEY OFFICE

PERSONNEL

REFERENCE NO. 11

SHEET 11 OF 34

NOTES CANTERBURY

H.C. ROUSOS

R.C. BARNHISEL

WEAVER

DATE 6/24/97

WEATHER SUN

TEMP. +90°

ROUTE # 53

COUNTY SENECA

TOWNSHIP SENECA

SECTION 27

T 1 N R 14 E

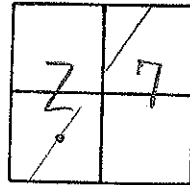
TYPE MONUMENT PK/WASHER

ON SURFACE - BELOW SURFACE

LEFT - 0 PAV'T. - RIGHT 7.7' RT 9

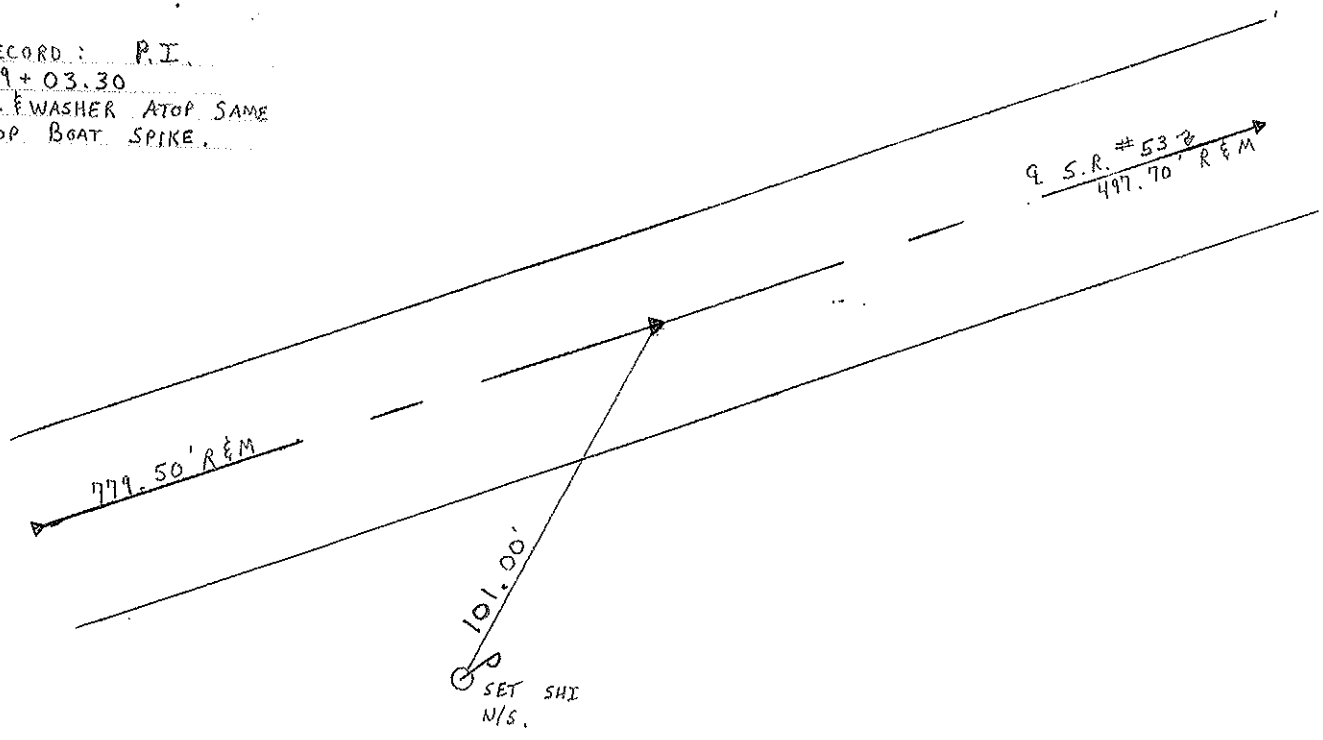
2' TO RT EDGE PAVEMENT

S.L.M. 2 + 416.76 SLK



RESET PK/WASHER
 10/6/97
 M.R.C

RECORD: P.I.
79 + 03.30
 PK. WASHER ATOP SAME
 ATOP BOAT SPIKE.



O.D.O.T. DISTRICT 2 SURVEY OFFICE

PERSONNEL

NOTES CROWIN
 H.C. RIPPLE
 R.C. BARBOUR
GEYMAN

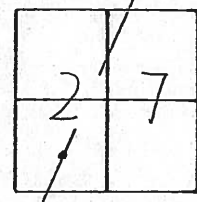
REFERENCE NO. 11

DRAWN 10/27/89
 DATE 8/30/88
 WEATHER SUNNY
 TEMP. 70°

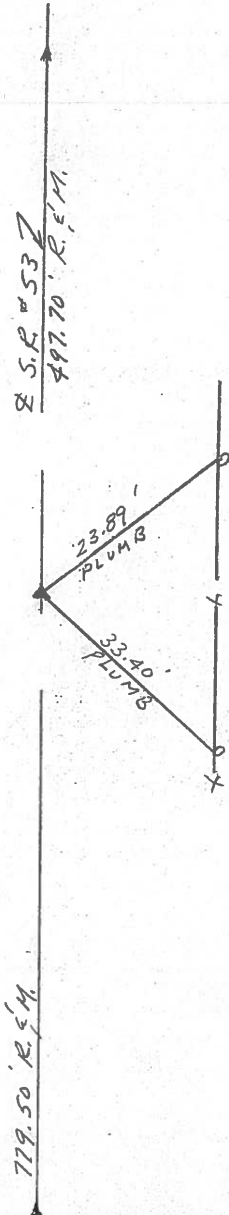
SHEET 11 OF

ROUTE #53
 COUNTY SENECA
 TOWNSHIP SENECA
 SECTION 27
T 1 N R 14 E

TYPE MONUMENT P.K. WASHER
 ON SURFACE - BELOW
 LEFT - ☉ PAV'T. - RIGHT 7.4
 TO EDGE PAVEMENT
 S.L.M.



P.I.
79+03.30
P.K. WASHER ATOP SAME
ATOP BOAT SPIKE



PERSONNEL	TITLE	PERSONNEL	TITLE
Cronin		Schneider	
Ripple		Mosser	
Geyman		Barbour	

COUNTY Seneca DATE 12/16/75
 S. R. # 53 WEATHER cloudy
 Field Bk. # 23
 SEC. I.C.H. #266 "F" TEMP. 33°

DESCRIPTION Ties for Control Points JOB NO. _____

