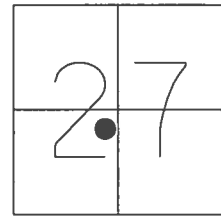


O.D.O.T. DISTRICT 2 SURVEY OFFICE (USE ONLY)

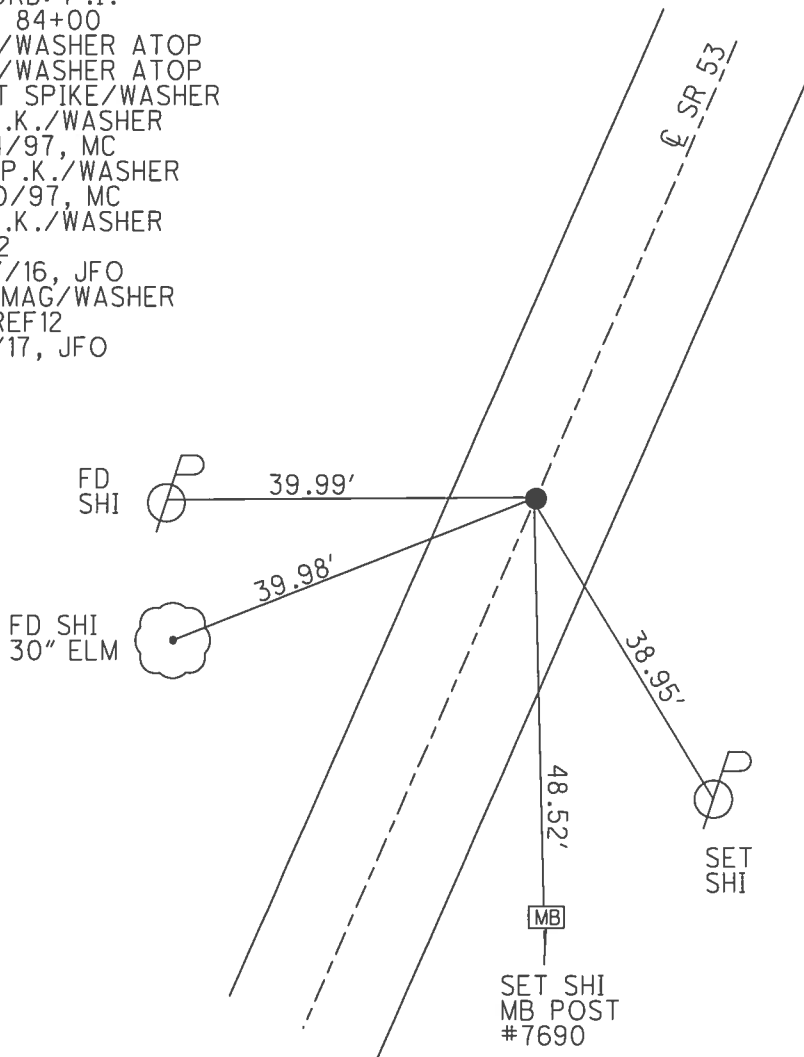
PERSONNEL _____ REFERENCE NO. 12 SHEET 12 OF 41
 NOTES RHOADES DATE 4/25/17 ROUTE SR 53
 H.C. O'DONNELL WEATHER SUNNY COUNTY SENECA
 R.C. RHOADES TEMP. 71° TOWNSHIP SENECA
 _____ SECTION 27
 _____ T 1 N R 14 E

TYPE MONUMENT P.K./WASHER
 ON SURFACE - ~~BELOW~~ ON
 LEFT - ☉ PAV'T - RIGHT ON
9.1' TO LT EDGE PAVEMENT
 S.L.M. 83+95.97



Grid: Northing: 490849.225 Easting: 1764025.837

RECORD: P.I.
 STA. 84+00
 P.K./WASHER ATOP
 P.K./WASHER ATOP
 BOAT SPIKE/WASHER
 FD P.K./WASHER
 6/24/97, MC
 SET P.K./WASHER
 10/10/97, MC
 FD P.K./WASHER
 REF12
 4/27/16, JFO
 SET MAG/WASHER
 NEWREF12
 9/5/17, JFO



O.D.O.T. DISTRICT 2 SURVEY OFFICE

PERSONNEL

REFERENCE NO. 12

SHEET 12 OF 34

NOTES CANTERBURY

H.C. ROUSOS

R.C. BARNHISEL

WEAVER

DATE 6/24/97

WEATHER SUN

TEMP. +90°

ROUTE # 53

COUNTY SENECA

TOWNSHIP SENECA

SECTION 27

T. 1 N. R 14 E

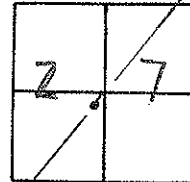
TYPE MONUMENT P.K. & WASHER

ON SURFACE - BELOW SURFACE

LEFT - ☉ PAV'T. - RIGHT ON ♀

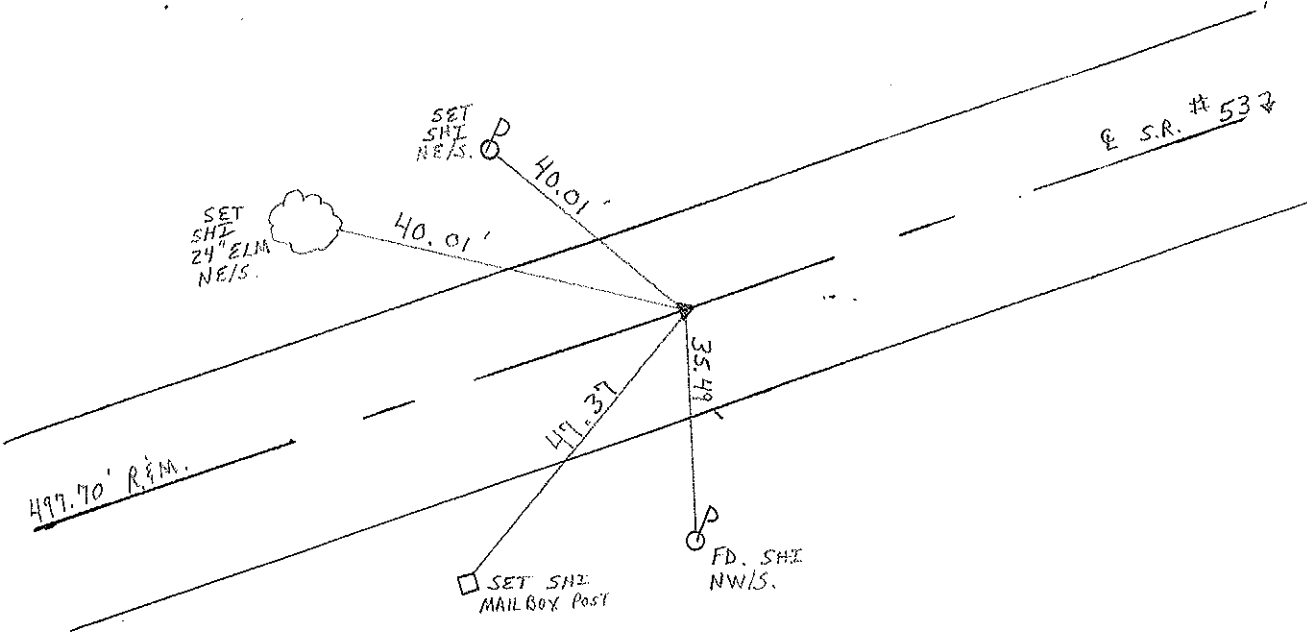
9.1' TO LT EDGE PAVEMENT

S.L.M. Z+568.29 SLK



RESET P.K./WASHER
 10/10/97
 M.R.C.

RECORD: P.I.
84+00
P.K. & WASHER ATOP SAME
ATOP BOAT SPIRE & WASHER



O.D.O.T. DISTRICT 2 SURVEY OFFICE

PERSONNEL

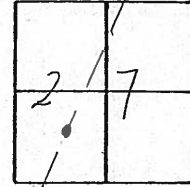
NOTES CROWN
 H.C. RIPPLE
 R.C. BARBOUR
GEYMAN

REFERENCE NO. 12
 DRAWN 11/03/89
 DATE 8/30/88
 WEATHER SUNNY
 TEMP. 70°

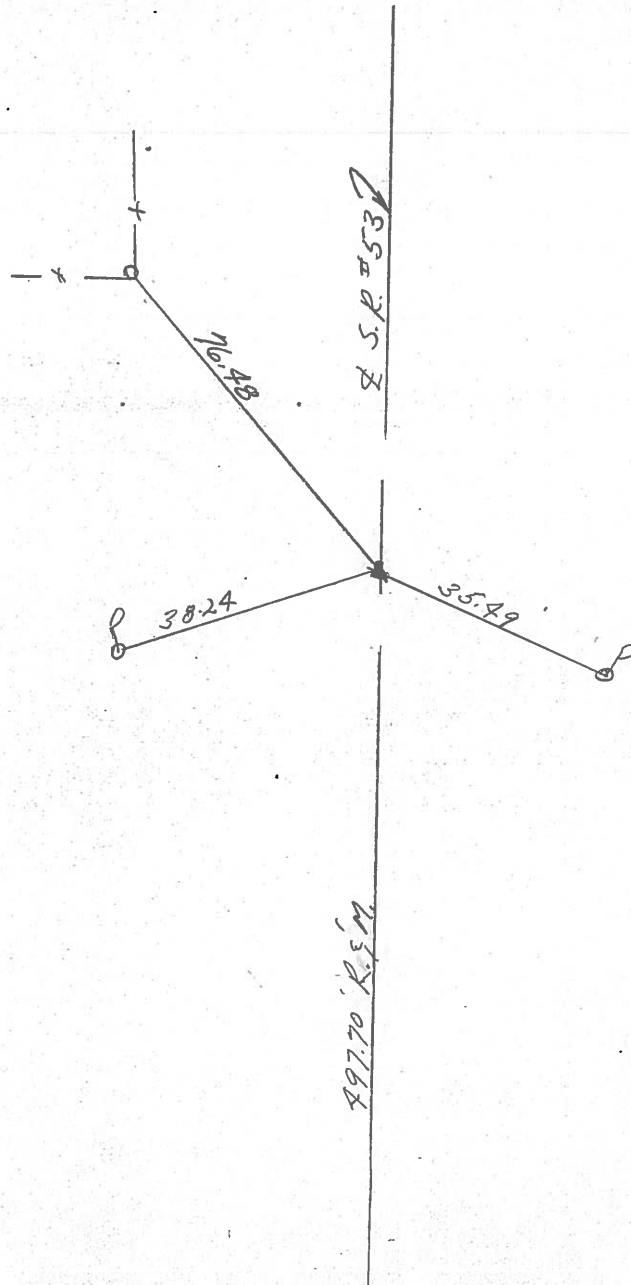
SHEET 12 OF

ROUTE #53
 COUNTY SENECA
 TOWNSHIP SENECA
 SECTION 27
T I N R I T E

TYPE MONUMENT P.K. & WASHER
 ON SURFACE - BELOW
 LEFT - PAV'T. - RIGHT
 TO EDGE PAVEMENT
 S.L.M. 1.5909



P.I.
84400
P.K. & WASHER ATOP SAME
ATOP BOAT SPIKE & WASHER



PERSONNEL	TITLE	PERSONNEL	TITLE
Cronin		Schneider	
Ripple		Mosser	
Geyman		Barbour	

COUNTY Seneca

DATE 12/16/75

S. R. # 53

WEATHER cloudy

Field Bk. # 23

SEC. I.C.H. #266 "F"

TEMP. 33°

DESCRIPTION Ties for Control Points

JOB NO.

