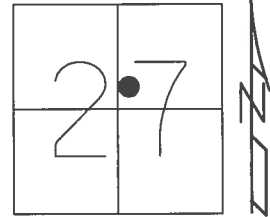


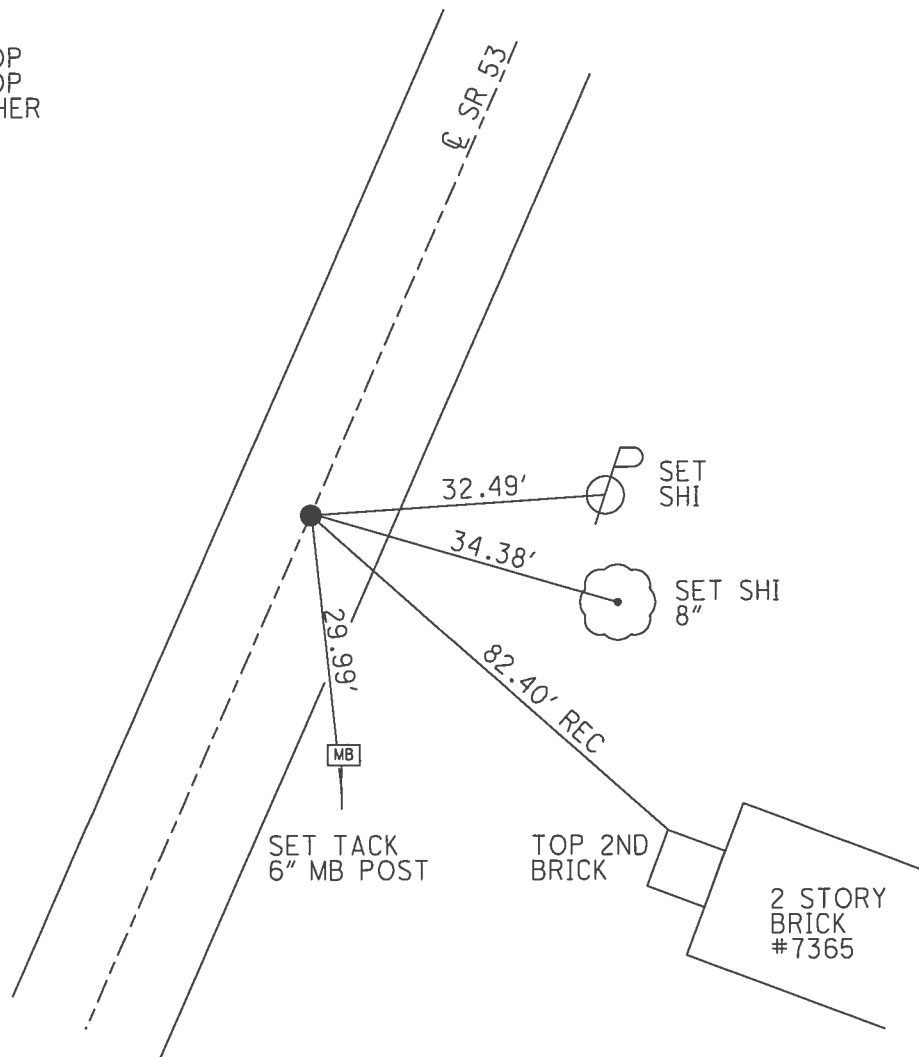
O.D.O.T. DISTRICT 2 SURVEY OFFICE (USE ONLY)

PERSONNEL _____ REFERENCE NO. 13 SHEET 13 OF 41
 NOTES RHOADES DATE 4/25/17 ROUTE SR 53
 H.C. O'DONNELL WEATHER PTLY.CLOUDY COUNTY SENECA
 R.C. RHOADES TEMP. 58° TOWNSHIP SENECA
 _____ SECTION 27
 _____ T 1 N R 14 E

TYPE MONUMENT P.K.NAIL
 ON SURFACE - ~~BELOW~~ ON _____
 LEFT - ☉ PAV'T - RIGHT ON _____
9.7' TO RT EDGE PAVEMENT
 S.L.M. 103+42.64
 Grid: Northing: 492666.486 Easting: 1764723.767



RECORD: P.I.
 STA. 103+51.10
 P.K./WASHER ATOP
 P.K./WASHER ATOP
 BOAT SPIKE/WASHER
 FD P.K./WASHER
 6/25/97, MC
 SET P.K./WASHER
 10/10/97, MC
 FD P.K.NAIL
 REF13
 4/27/16, JFO
 SET MAG/WASHER
 NEWREF13
 9/5/17, JFO



O.D.O.T. DISTRICT 2 SURVEY OFFICE

PERSONNEL

REFERENCE NO. 13

SHEET 13 OF 34

NOTES CANTERBURY

H.C. ROUSOS

R.C. BARNHISEL

P WEAVER

DATE 6/25/97

WEATHER SUN

TEMP. +90°

ROUTE # 53

COUNTY SENECA

TOWNSHIP SENECA

SECTION 27

T 1 N R 14 E

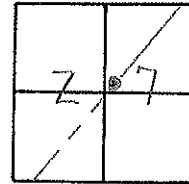
TYPE MONUMENT P.K. & WASHER

ON SURFACE - BELOW SURFACE

LEFT - CL PAV'T. - RIGHT ON CL

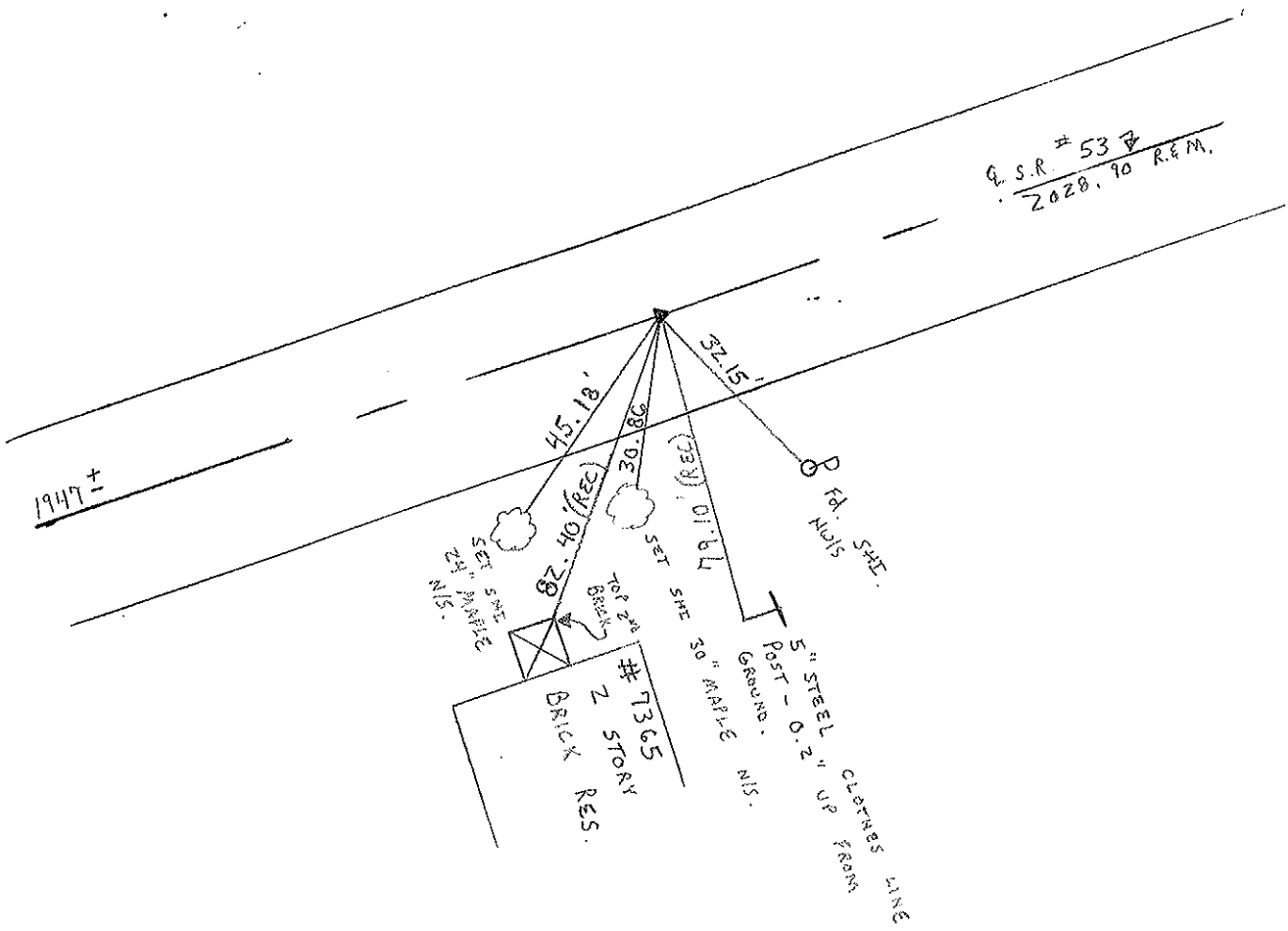
9.7' TO RT EDGE PAVEMENT

S.L.M. 3+166.15 SLK



RESET P.K./WASHER
 10/10/99
 M.R.C.

RECORD: P.I.
103+51.10
 P.K. & WASHER ATOP SAME
 ATOP BOAT SPIKE & WASHER

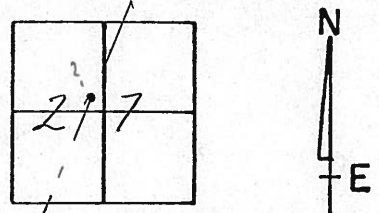


Q.S.R. # 53
 2028.90 R&M.

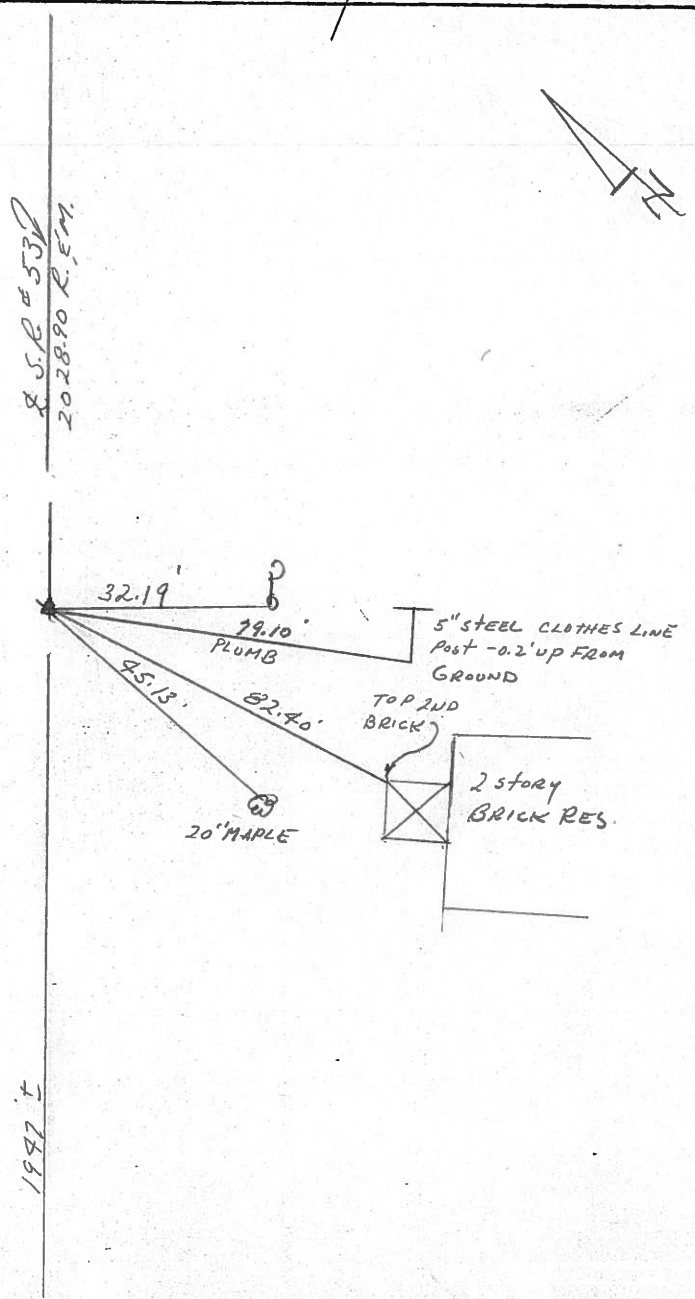
O.D.O.T. DISTRICT 2 SURVEY OFFICE

PERSONNEL _____ REFERENCE NO. 13 SHEET 13 OF _____
 NOTES CRONIN DRAWN 11/03/89
 H.C. RIPPLE DATE 8/30/88 ROUTE #53
 R.G. BARBOUR WEATHER _____ COUNTY SENECA
GEYMAN TEMP. _____ TOWNSHIP SENECA
 SECTION 27
T 1 N R 14 E

TYPE MONUMENT P.K. & WASHER
 ON SURFACE - BELOW _____
 LEFT - PAV'T. - RIGHT _____
 TO _____ EDGE PAVEMENT
 S.L.M. 1.9604



P.I.
103+51.10
P.K. & WASHER MOD SAME
AT OP BOAT SPIKE & WASHER



1987

PERSONNEL	TITLE	PERSONNEL	TITLE
Cronin		Schneider	
Ripple		Masser	
Geyman		Barbour	

COUNTY Seneca

DATE 12/16/75

S. R. # 53

WEATHER cloudy

Field Bk. #23

SEC. I.C.H. #266 'F'

TEMP. 33°

DESCRIPTION Ties for Control Points

JOB NO.

14-A

Seneca Township

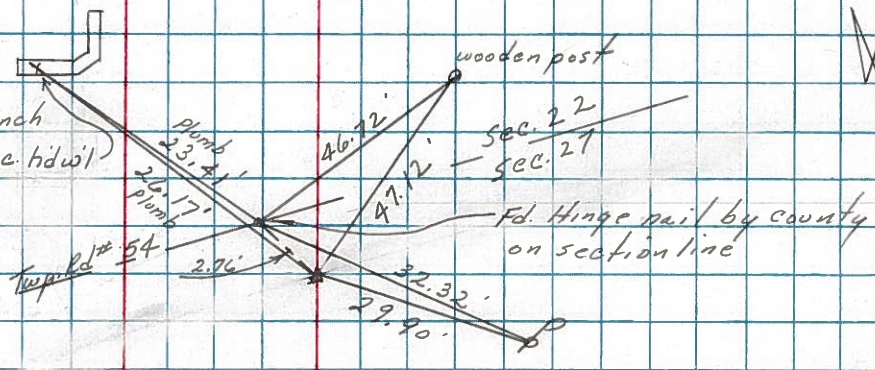
Section 22

14

'x' out & punch hole in conc. hdwl

P.I. 123+80

set small square spike & washer split of pavement & 2' south of Sec. Line

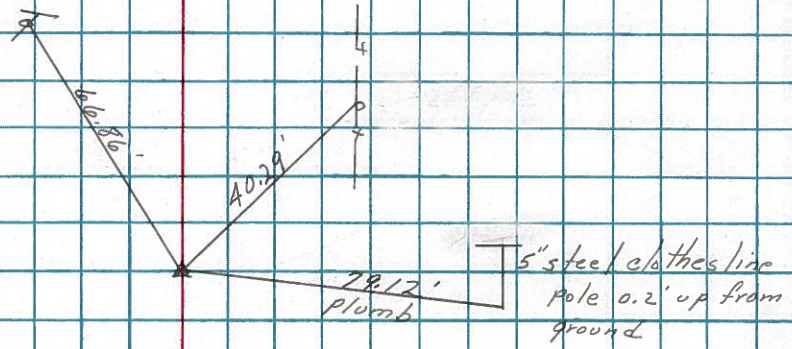


2028.90' Mas. & Loc.

13

P.T. 103+51.10

set small square spike & washer split pavement



1947 'F'

Section 27