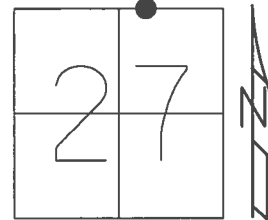


O.D.O.T. DISTRICT 2 SURVEY OFFICE (USE ONLY)

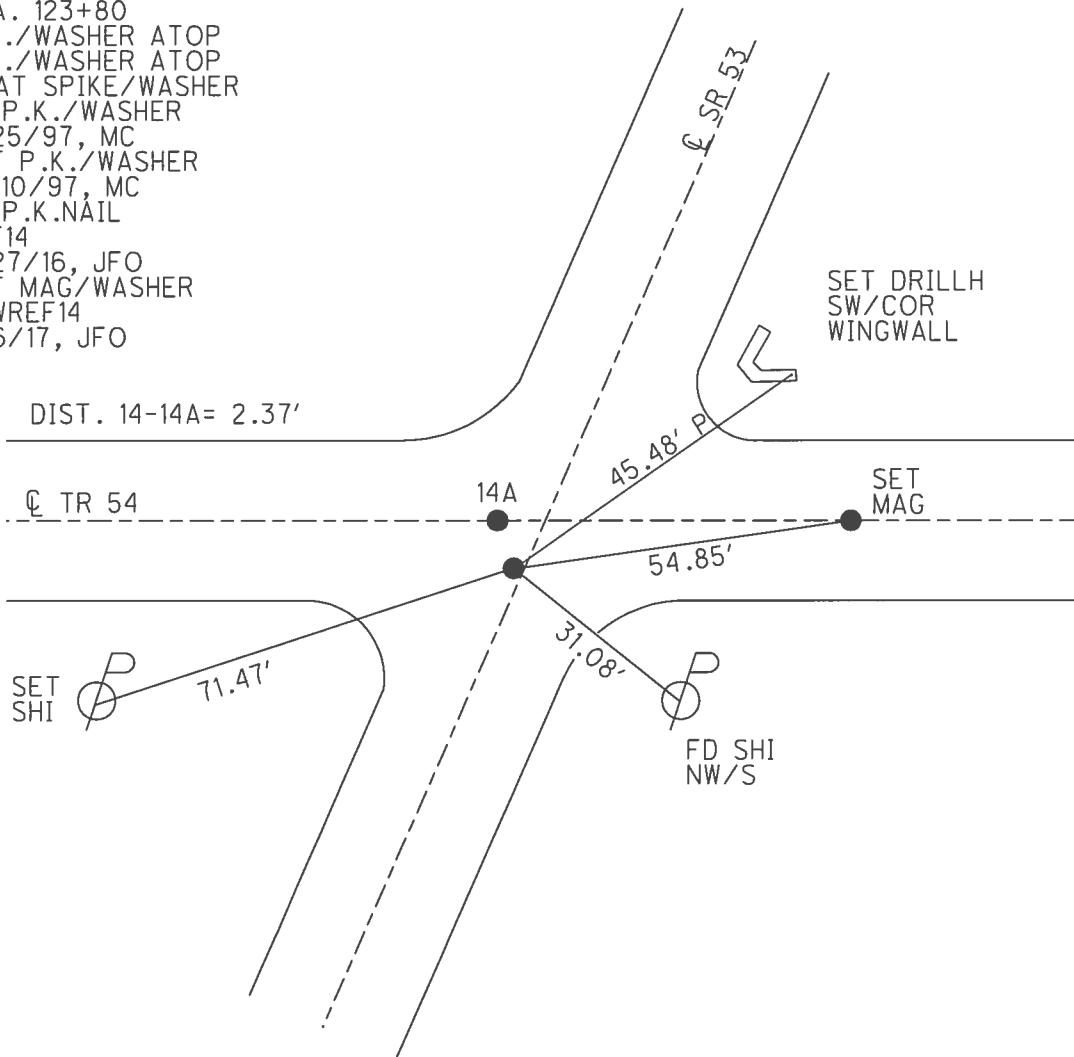
PERSONNEL \_\_\_\_\_ REFERENCE NO. 14 SHEET 14 OF 41  
 NOTES RHOADES DATE 4/25/17 ROUTE SR 53  
 H.C. O'DONNELL WEATHER PTLY.CLOUDY COUNTY SENECA  
 R.C. RHOADES TEMP. 58° TOWNSHIP SENECA  
 \_\_\_\_\_ SECTION 27  
 \_\_\_\_\_ T 1 N R 14 E

TYPE MONUMENT P.K.NAIL  
 ON SURFACE - ~~BELOW~~ ON \_\_\_\_\_  
 LEFT - ☉ PAV'T - ~~RIGHT~~ 0.5'  
9.1' TO LT EDGE PAVEMENT  
 S.L.M. 123+71.46



Grid: Northing: 494567.808 Easting: 1765431.721

RECORD: P.I.  
 STA. 123+80  
 P.K./WASHER ATOP  
 P.K./WASHER ATOP  
 BOAT SPIKE/WASHER  
 FD P.K./WASHER  
 6/25/97, MC  
 SET P.K./WASHER  
 10/10/97, MC  
 FD P.K.NAIL  
 REF14  
 4/27/16, JFO  
 SET MAG/WASHER  
 NEWREF14  
 9/6/17, JFO



# O.D.O.T. DISTRICT 2 SURVEY OFFICE

PERSONNEL

REFERENCE NO. 14

SHEET 14 OF 34

NOTES CANTERBURY

H.C. Rousos

DATE 6/25/97

ROUTE # 53

R.C. BARNHISEL

WEATHER SUN

COUNTY SENECA

F WEAVER

TEMP. + 90°

TOWNSHIP SENECA

SECTION 27

T 1 N 14 E

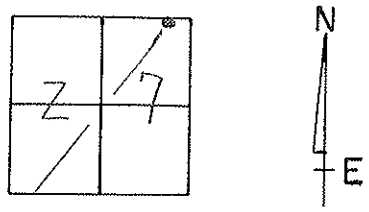
TYPE MONUMENT P.K. & WASHER

ON SURFACE - BELOW SURFACE

LEFT - C PAV'T. - RIGHT PT "B" 0.9' LT

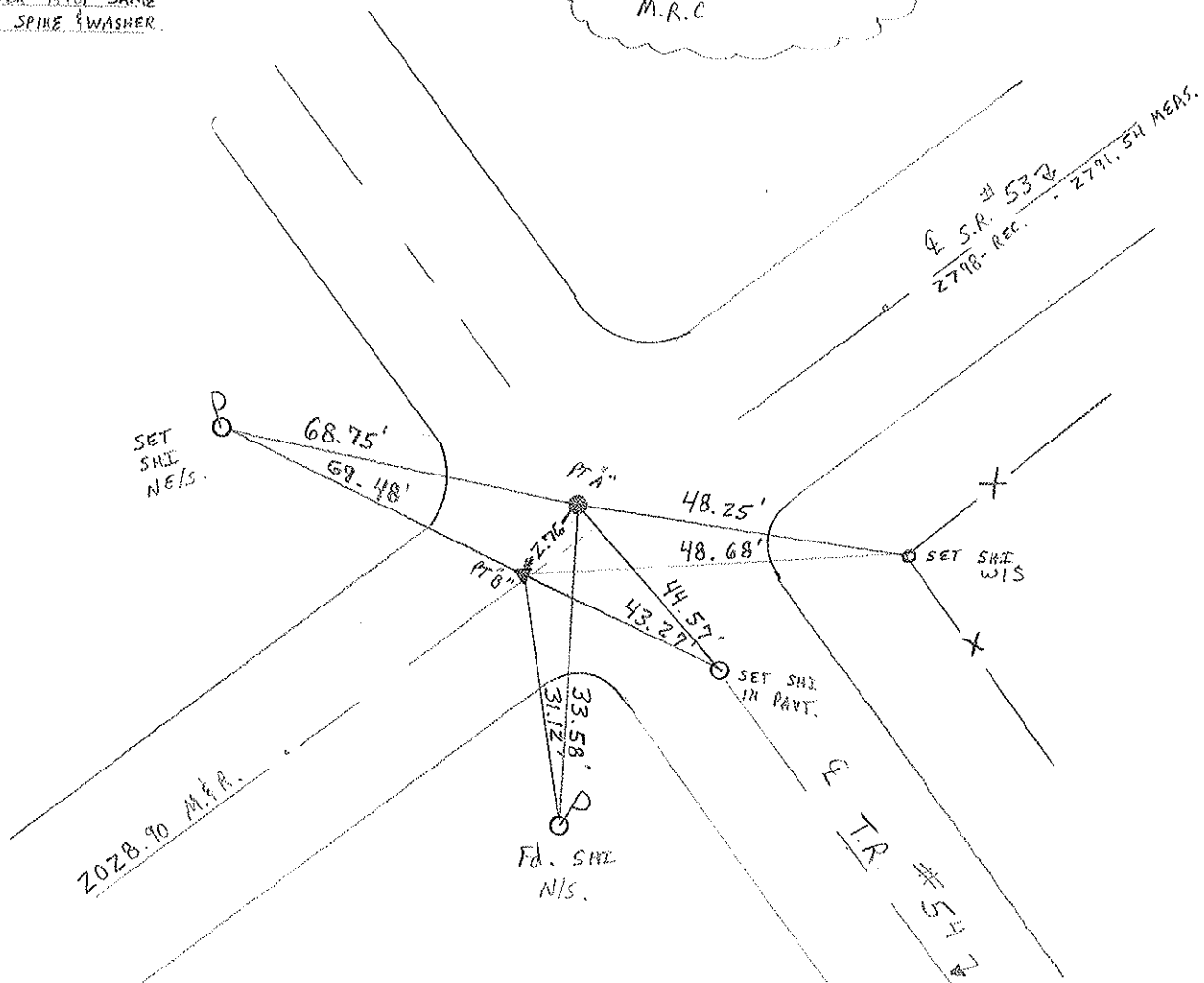
8.7' TO LT EDGE PAVEMENT

S.L.M. 3+787.81 SLK



RECORD: P.I.  
123 + 80  
P.K. & WASHER ATOP SAME  
ATOP BOAT SPIKE & WASHER.

RESET P.K. / WASHER @ BOTH  
 10/10/97  
 M.R.C.



NOTE: PT "A" - WAS A HINGE NAIL BY COUNTY ON  
E & W SECTION LINE. STA 3+788.11  
2.9' LT OF E - 6.6' TO LT EOP. (1988) NOTES

# O.D.O.T. DISTRICT 2 SURVEY OFFICE

PERSONNEL \_\_\_\_\_

REFERENCE NO. 14

SHEET 14 OF 34

NOTES CANTERBURY

H.C. Rousos

R.C. BARNHISEL

WEAVER

DATE 6/25/97

WEATHER SUN

TEMP. + 90°

ROUTE # 53

COUNTY SENECA

TOWNSHIP SENECA

SECTION 27

T 1 N R 14 E

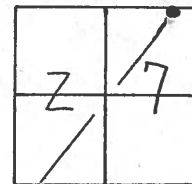
TYPE MONUMENT P.K. & WASHER

ON SURFACE - ~~BELOW~~ SURFACE

LEFT - ~~C~~ PAV'T. - RIGHT PT "B" 0.9' LT

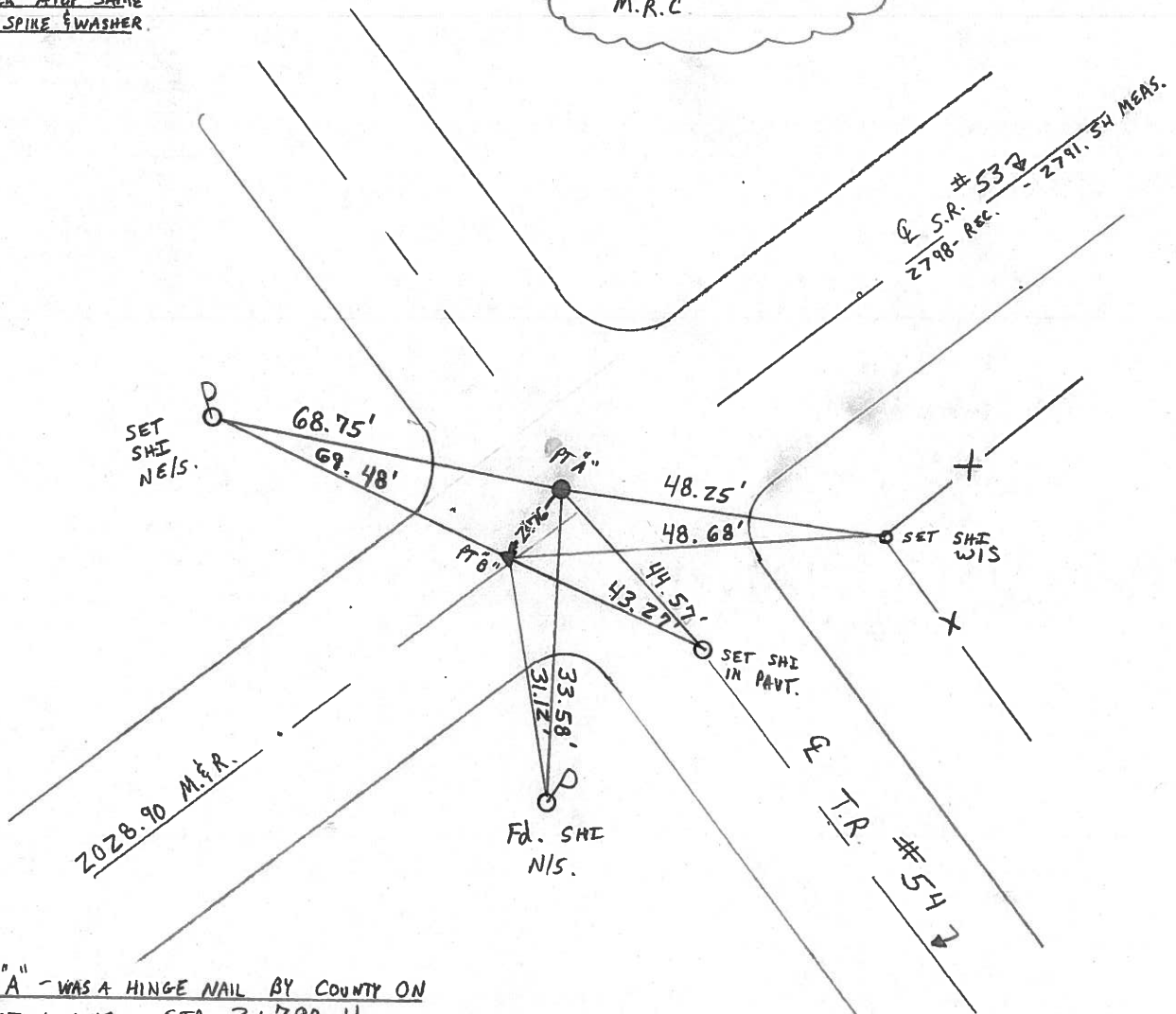
8.7 TO LT EDGE PAVEMENT

S.L.M. 3+787.81 SLK



RECORD: P.I.  
173 + 80  
P.K. & WASHER ATOP SAME  
ATOP BOAT SPIKE & WASHER.

RESET P.K. / WASHER @ BOTH  
 10/10/97  
 M.R.C.



NOTE: PT "A" - WAS A HINGE NAIL BY COUNTY ON  
E & W SECTION LINE. STA 3+788.11  
2.9 LT OF E - 6.6' TO LT EOP. (1988) NOTES

# O.D.O.T. DISTRICT 2 SURVEY OFFICE

PERSONNEL

REFERENCE NO. 14

SHEET 14 OF       

NOTES CROVIN

DRAWN 11/03/89

H.C. RIPPLE

DATE 8/30/88

ROUTE #53

R.C. BARBOUR

WEATHER SUNNY

COUNTY SENECA

GEYMAN

TEMP. 70°

TOWNSHIP SENECA

SECTION 27

T. 1 N. R. 14 E.

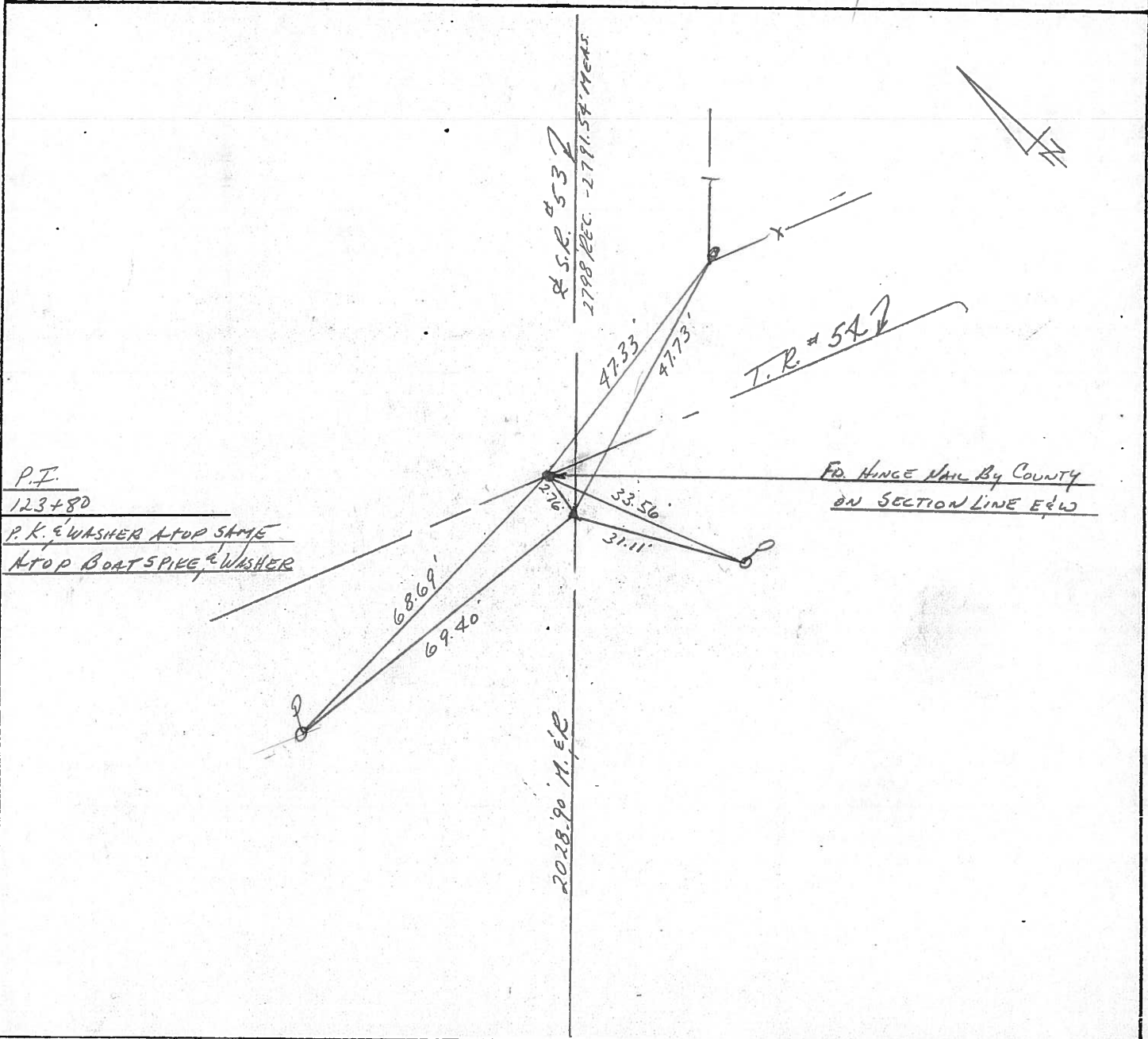
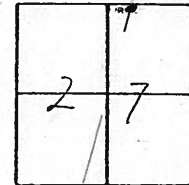
TYPE MONUMENT P.K. & WASHER

ON SURFACE - BELOW       

LEFT -    PAV'T. - RIGHT       

       TO        EDGE PAVEMENT

S.L.M. 23447





PERSONNEL	TITLE	PERSONNEL	TITLE
Cronin		Schneider	
Ripple		Masser	
Geyman		Barbour	

COUNTY Seneca

DATE 12/16/75

S. R. # 53  
 Field Bk. # 23  
 SEC. I.C.H. # 266 'F'

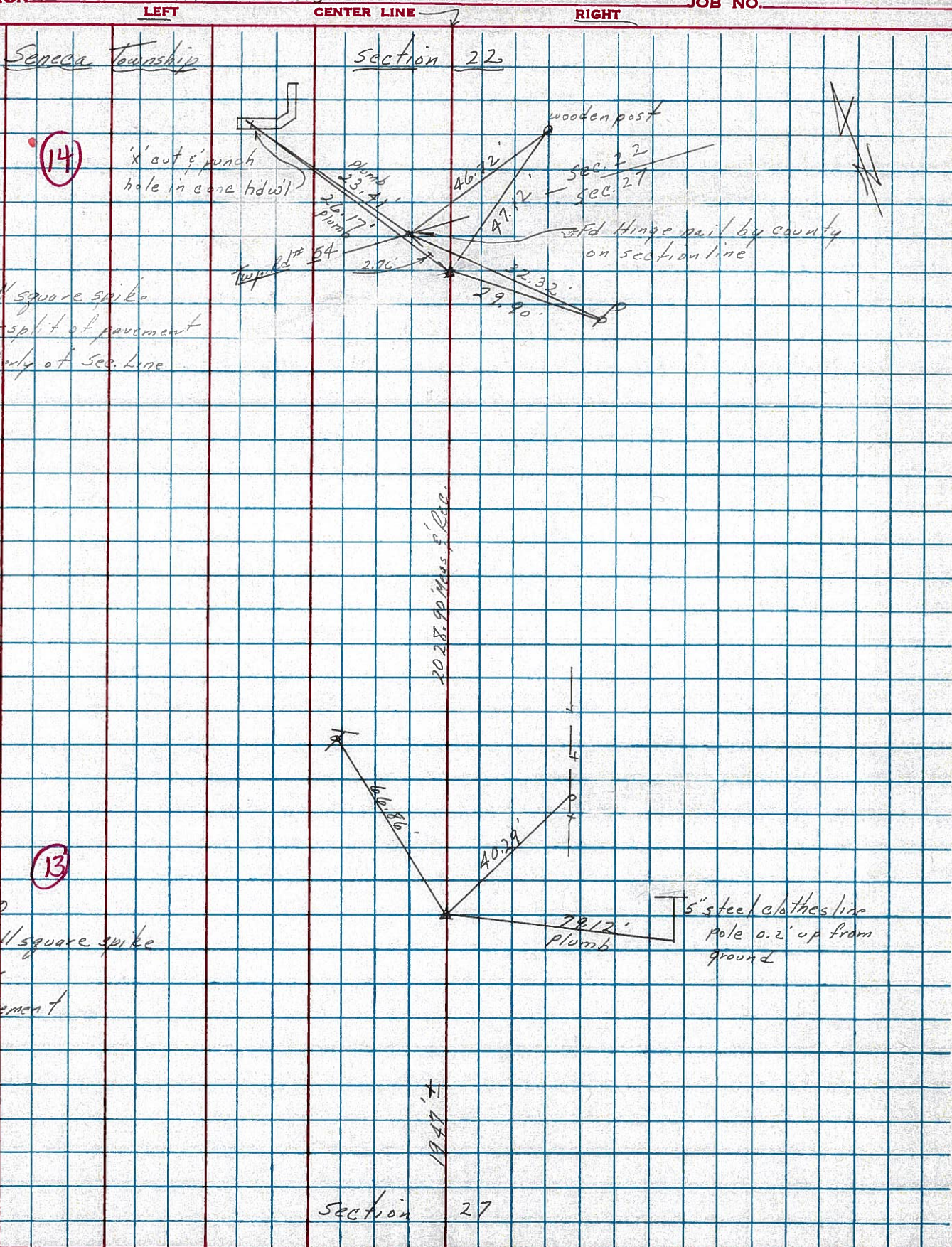
WEATHER cloudy

TEMP. 33°

DESCRIPTION Ties for Control Points

JOB NO.

14-A



P.I.  
 123+80  
 set small square spike  
 & washer split of pavement  
 & 2' southerly of Sec. Line

P.T. 13  
 103+51.10  
 set small square spike  
 & washer  
 split pavement

Section 27



PERSONNEL TITLE PERSONNEL TITLE

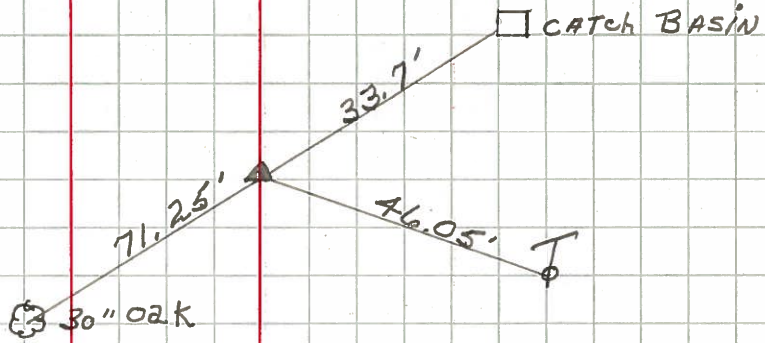
COUNTY Seneca DATE 1-17-63

S. R. # 53 WEATHER

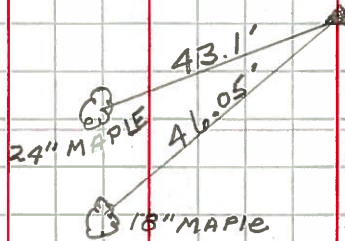
SEC 016 53 TEMP.

DESCRIPTION LEFT CENTER LINE RIGHT JOB NO.

STA. 122+74  
R.R. SPIKE on R  
#122



STA. 109+52.1  
R.R. SPIKE on R/W  
#121



STA. 90+92.5  
#120



STA. 85+70  
#119



STA. 80+30  
#118

