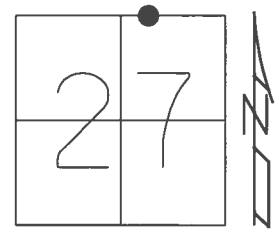


O.D.O.T. DISTRICT 2 SURVEY OFFICE (USE ONLY)

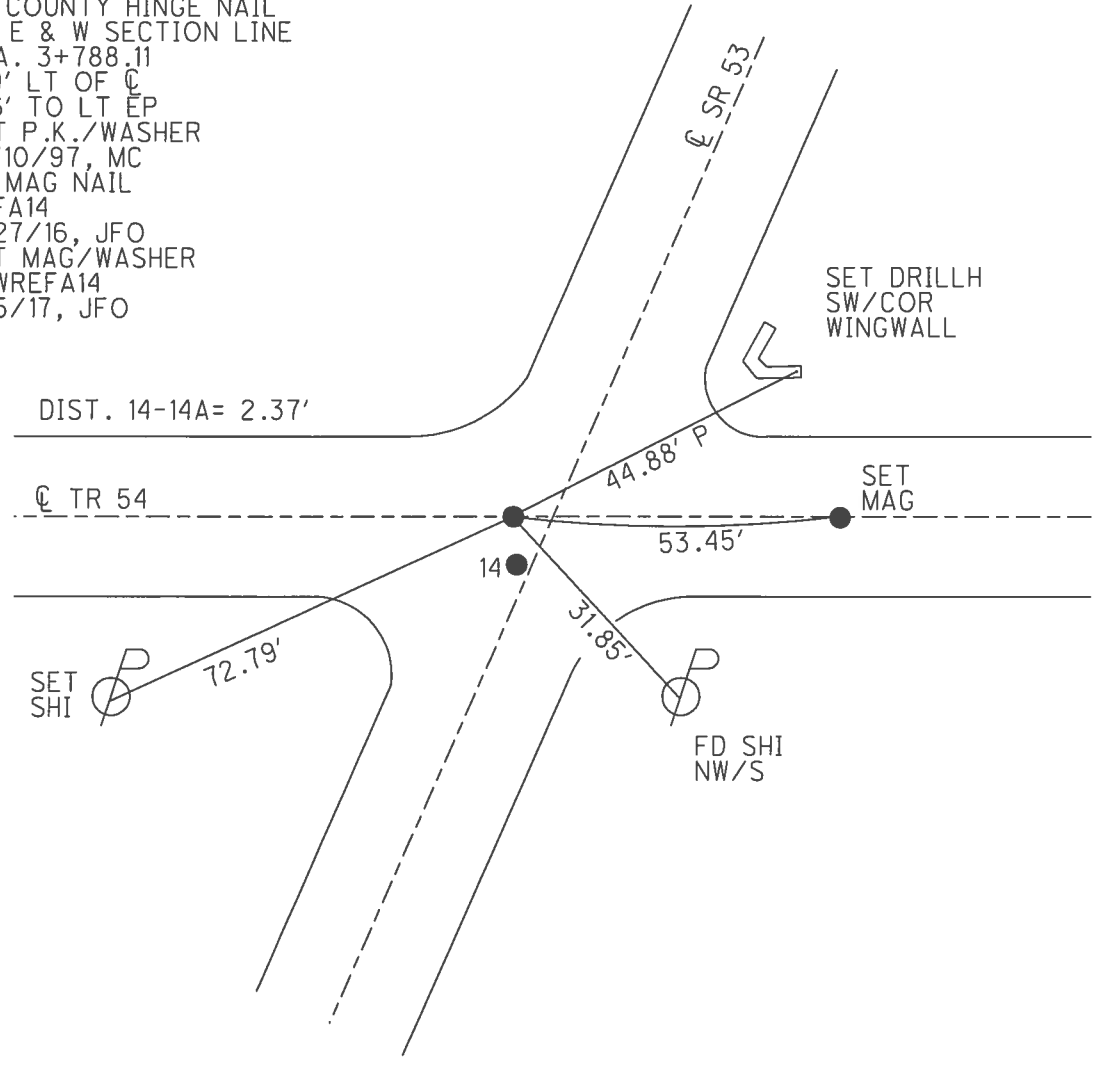
PERSONNEL \_\_\_\_\_ REFERENCE NO. 14 A SHEET 15 OF 41

NOTES RHOADES DATE 4/25/17 ROUTE SR 53  
 H.C. O'DONNELL WEATHER PTLY.CLOUDY COUNTY SENECA  
 R.C. RHOADES TEMP. 58° TOWNSHIP SENECA  
 \_\_\_\_\_ SECTION 27  
 \_\_\_\_\_ T 1 N R 14 E

TYPE MONUMENT MAG NAIL  
 ON SURFACE - ~~BELOW~~ ON \_\_\_\_\_  
 LEFT - C PAV'T - ~~RIGHT~~ 0.9'  
8.7' TO LT EDGE PAVEMENT  
 S.L.M. 123+74.22  
 Grid: Northing: 494570.009 Easting: 1765432.407



RECORD: 1988  
 FD COUNTY HINGE NAIL  
 ON E & W SECTION LINE  
 STA. 3+788.11  
 2.9' LT OF C  
 6.6' TO LT EP  
 SET P.K./WASHER  
 10/10/97, MC  
 FD MAG NAIL  
 REFA14  
 4/27/16, JFO  
 SET MAG/WASHER  
 NEWREFA14  
 9/5/17, JFO



# O.D.O.T. DISTRICT 2 SURVEY OFFICE

PERSONNEL

REFERENCE NO. 14

SHEET 14 OF 34

NOTES CANTERBURY

H.C. Rousos

R.C. BARNHISEL

F WEAVER

DATE 6/25/97

WEATHER SUN

TEMP. +90°

ROUTE #53

COUNTY SENECA

TOWNSHIP SENECA

SECTION 27

T 1 N 14 E

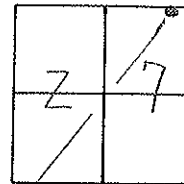
TYPE MONUMENT P.K. & WASHER

ON SURFACE - BELOW SURFACE

LEFT - C PAV'T. - RIGHT PT "B" 0.9' LT

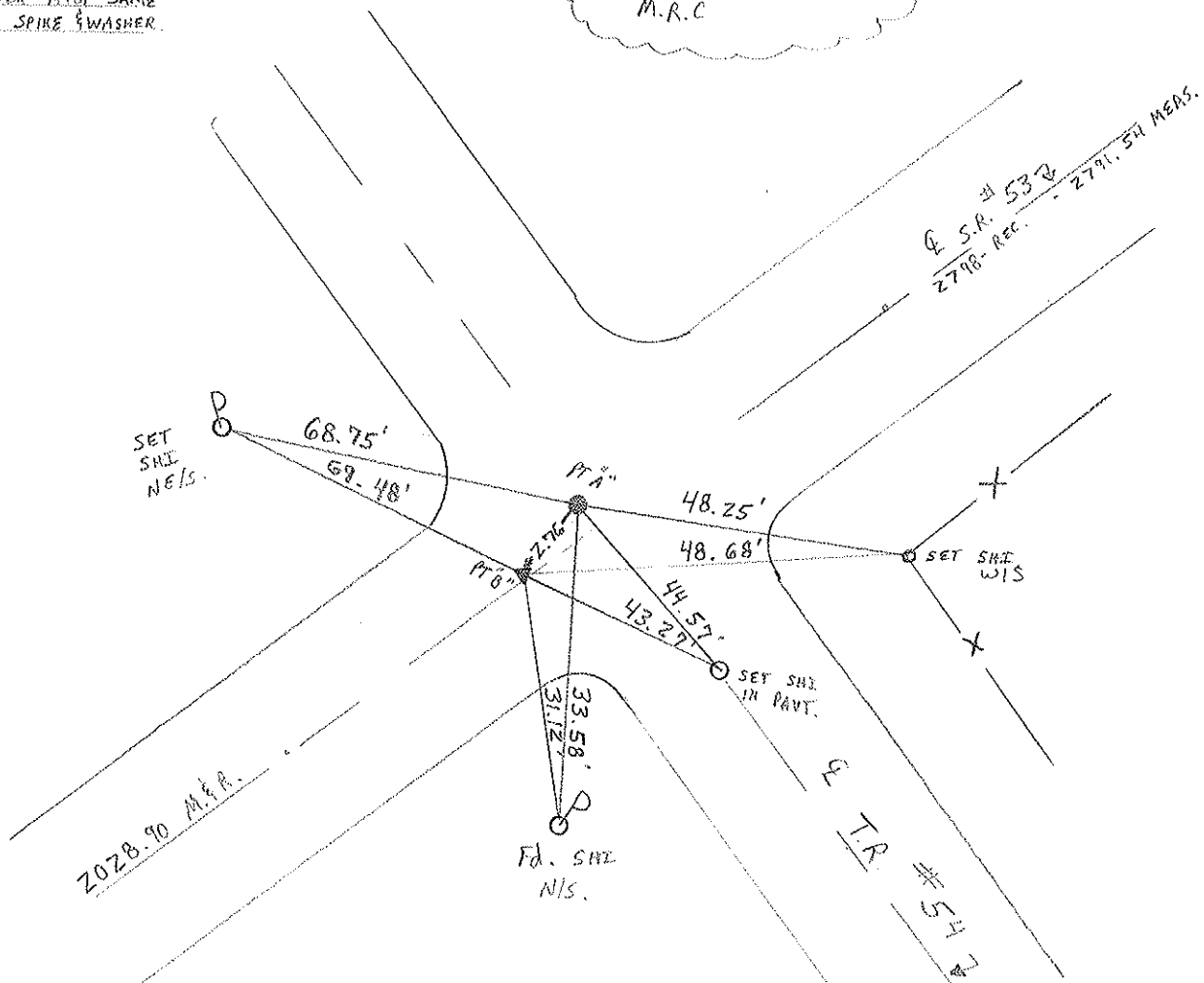
8.7' TO LT EDGE PAVEMENT

S.L.M. 3+787.81 SLK



RECORD: P.J.  
1/23 + 80  
P.K. & WASHER ATOP SAME  
ATOP BOAT SPIKE & WASHER.

RESET P.K. / WASHER @ BOTH  
 10/10/97  
 M.R.C.



NOTE: PT "A" - WAS A HINGE NAIL BY COUNTY ON  
 E & W SECTION LINE. STA 3+788.11  
 2.9' LT OF E - 6.6' TO LT EOP. (1988) NOTES

# O.D.O.T. DISTRICT 2 SURVEY OFFICE

PERSONNEL \_\_\_\_\_

REFERENCE NO. 14

SHEET 14 OF \_\_\_\_\_

NOTES CROWN

DRAWN 11/03/89

H.C. RIPPLE

DATE 8/30/88

ROUTE #53

R.G. BARBOUR

WEATHER SUNNY

COUNTY SENECA

GEYMAN

TEMP. 70°

TOWNSHIP SENECA

SECTION 27

T. 1 N. R. 14 E.

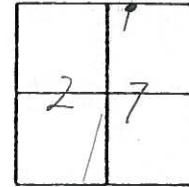
TYPE MONUMENT P.K. & WASHER

ON SURFACE - BELOW \_\_\_\_\_

LEFT - PAV'T. - RIGHT \_\_\_\_\_

TO \_\_\_\_\_ EDGE PAVEMENT

S.L.M. 23447

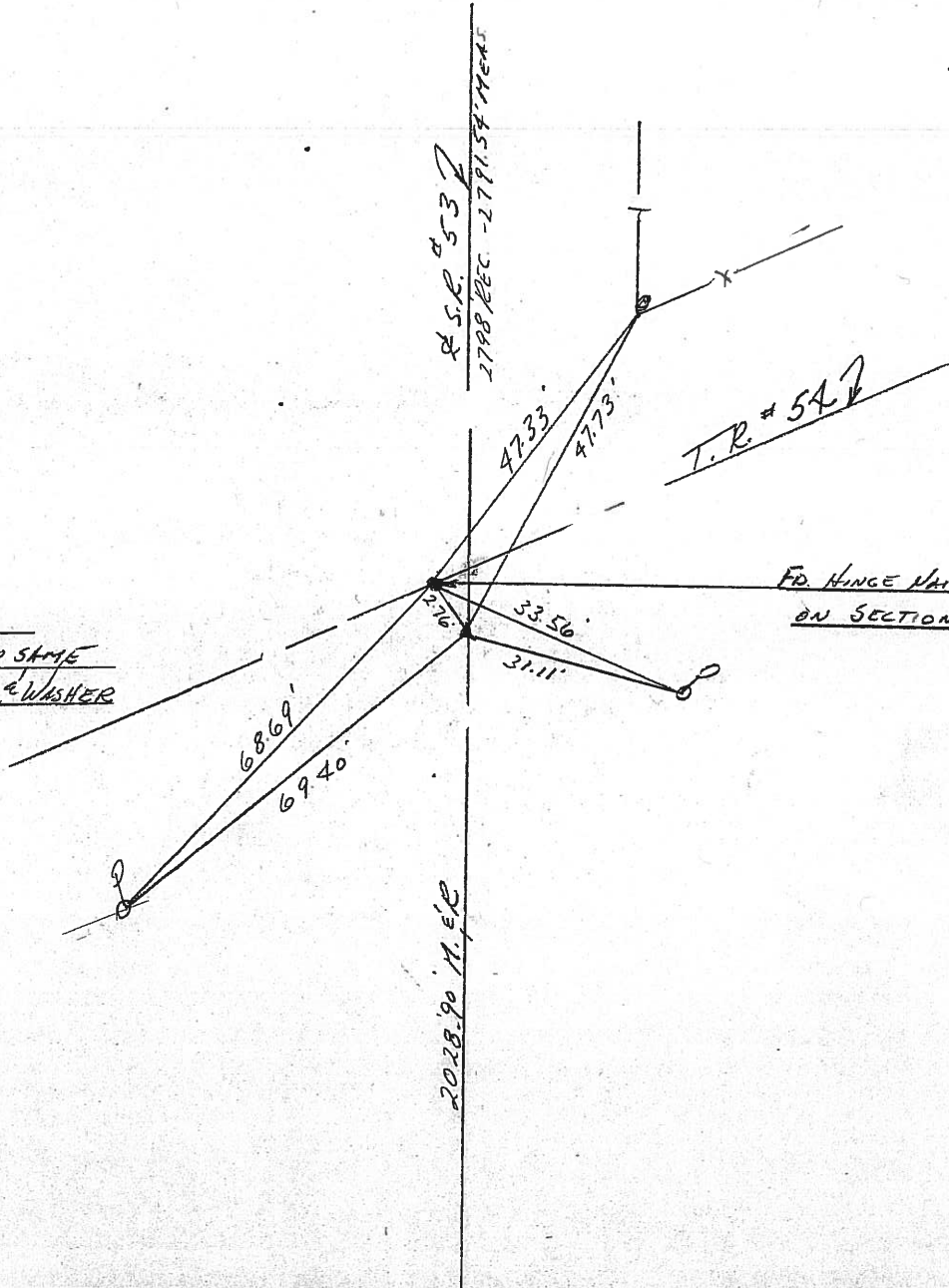


14-A

P.F.  
123+80

P.K. & WASHER ATOP STAKE  
ATOP BOAT SPIKE & WASHER

FD. HINGE NAIL BY COUNTY  
ON SECTION LINE E&W



PERSONNEL TITLE PERSONNEL TITLE  
 Cronin Schneider  
 Ripple Masser  
 Geyman Barbour

COUNTY Seneca

DATE 12/16/75

S. R. # 53  
Field Bk. # 23

WEATHER cloudy

SEC. I.C.H. # 266 'F'

TEMP. 33°

DESCRIPTION Ties for Control Points

LEFT CENTER LINE RIGHT JOB NO.

14-A

Seneca Township

Section 22

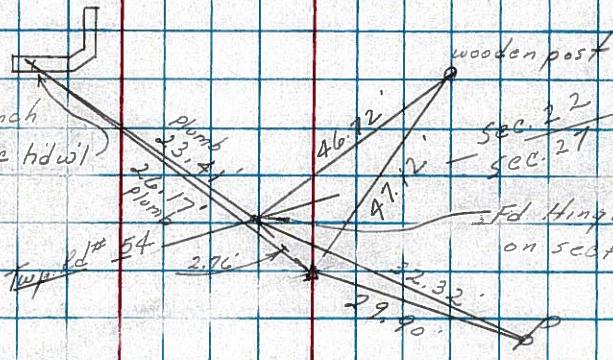
14

'x' out of punch hole in core tidwell

P.I.

123+80

set small square spike & washer - split of pavement & 2' south of Sec. Line



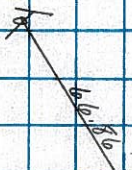
13

P.T.

103+51.10

set small square spike & washer split pavement

2028.00 mas. P.P.C.



5" steel clothes line pole 0.2' up from ground

1947'

Section 27