

O.D.O.T. DISTRICT 2 SURVEY OFFICE (USE ONLY)

PERSONNEL \_\_\_\_\_ REFERENCE NO. 15 SHEET 16 OF 41

NOTES BALBAUGH DATE 4/28/2020 ROUTE SR 53

H.C. LEU WEATHER PTLY CLOUDY COUNTY SENECA

R.C. AUBLE TEMP. 55° TOWNSHIP SENECA

SECTION 22

DWG BY GARRETT PID 104747 T 1 N R 14 E

TYPE MONUMENT MONBOX W/ 1" IPIN

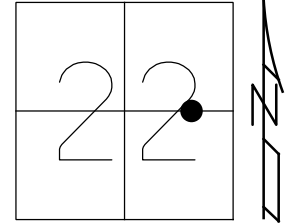
ON SURFACE - ~~BELOW~~ ON

LEFT - ☉ PAV'T - ~~RIGHT~~ 0.7'

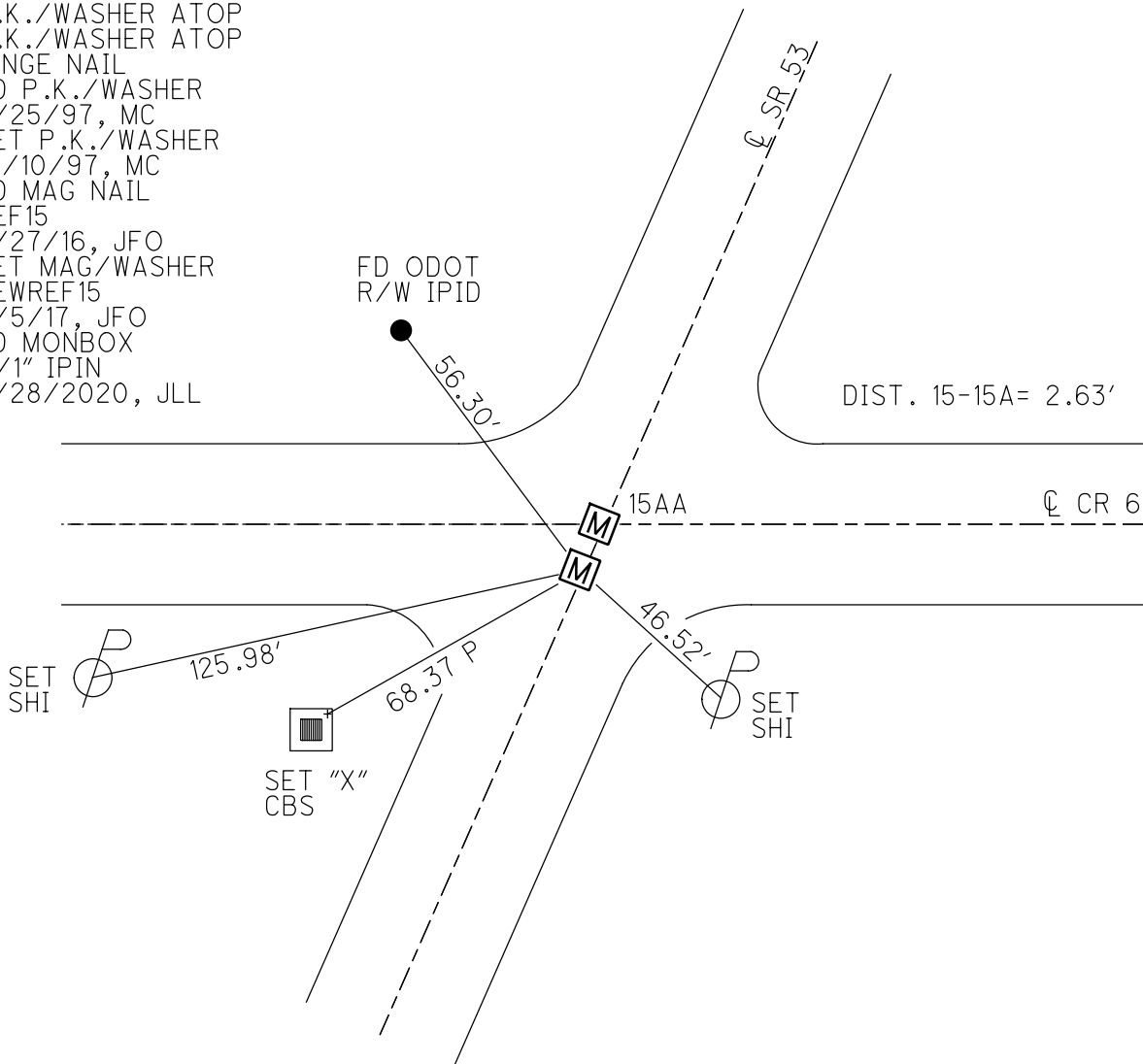
- TO - EDGE PAVEMENT

S.L.M. 151+62.36

Grid: Northing: 497178.711 Easting: 1766417.863



RECORD: P.I.  
 STA. 151+78=0+00  
 P.K./WASHER ATOP  
 P.K./WASHER ATOP  
 HINGE NAIL  
 FD P.K./WASHER  
 6/25/97, MC  
 SET P.K./WASHER  
 10/10/97, MC  
 FD MAG NAIL  
 REF15  
 4/27/16, JFO  
 SET MAG/WASHER  
 NEWREF15  
 9/5/17, JFO  
 FD MONBOX  
 W/1" IPIN  
 4/28/2020, JLL

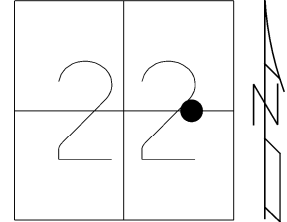


O.D.O.T. DISTRICT 2 SURVEY OFFICE (USE ONLY)

PERSONNEL \_\_\_\_\_ REFERENCE NO. 15 SHEET 16 OF 41

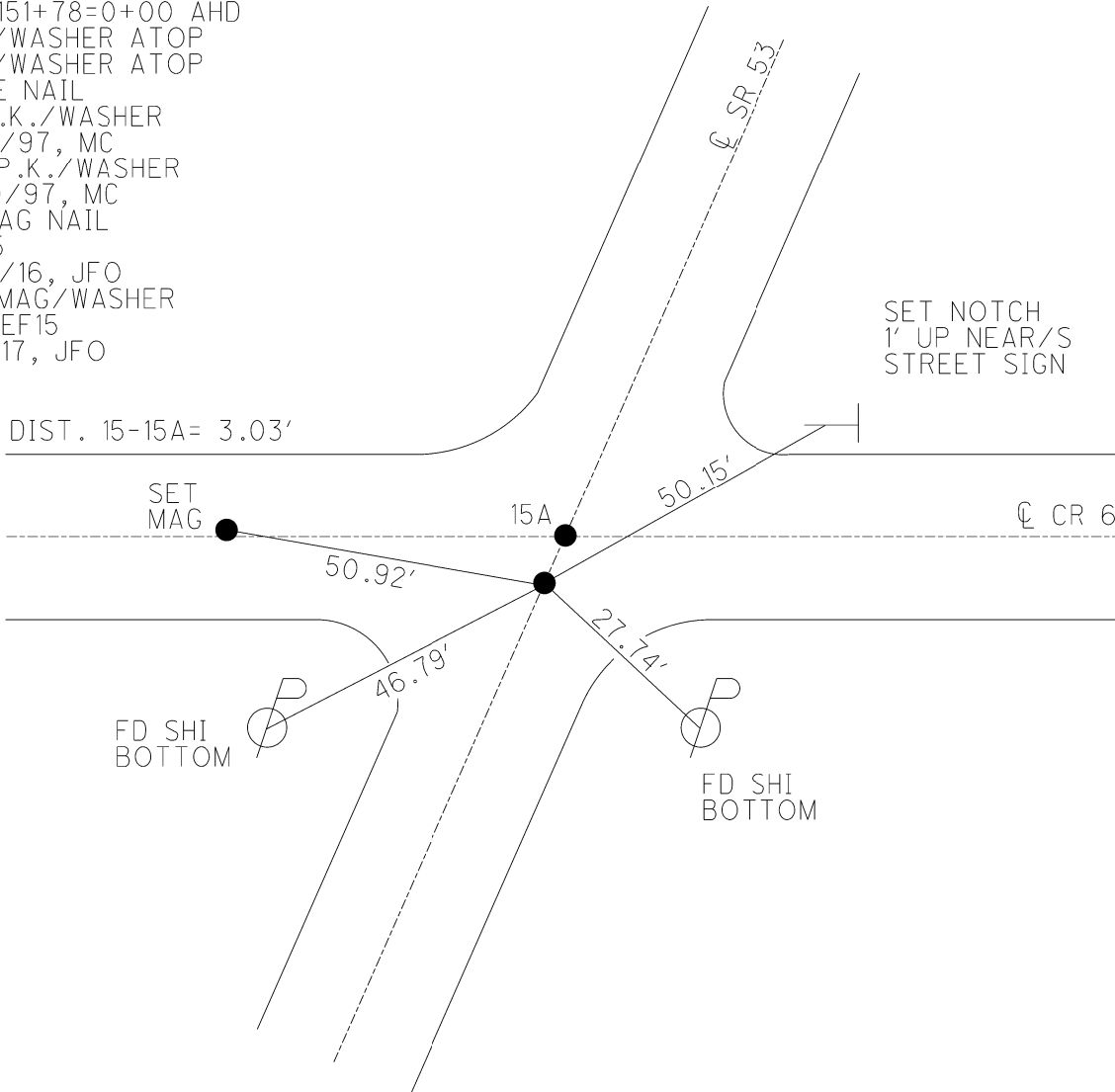
NOTES	<u>RHOADES</u>	DATE	<u>4/25/17</u>	ROUTE	<u>SR 53</u>
H.C.	<u>O'DONNELL</u>	WEATHER	<u>CLOUDY</u>	COUNTY	<u>SENECA</u>
R.C.	<u>RHOADES</u>	TEMP.	<u>58°</u>	TOWNSHIP	<u>SENECA</u>
_____	_____	_____	_____	SECTION	<u>22</u>
_____	_____	_____	_____	T	<u>1</u> N
_____	_____	_____	_____	R	<u>14</u> E

TYPE MONUMENT MAG/WASHER  
 ON SURFACE - ~~BELOW~~ ON  
 LEFT - ☉ PAV'T - RIGHT ON  
9.2' TO LT EDGE PAVEMENT  
 S.L.M. 151+62.36



Grid: Northing: 497178.681 Easting: 1766417.885

RECORD: P.I.  
 STA. 151+78=0+00 AHD  
 P.K./WASHER ATOP  
 P.K./WASHER ATOP  
 HINGE NAIL  
 FD P.K./WASHER  
 6/25/97, MC  
 SET P.K./WASHER  
 10/10/97, MC  
 FD MAG NAIL  
 REF15  
 4/27/16, JFO  
 SET MAG/WASHER  
 NEWREF15  
 9/5/17, JFO



# O.D.O.T. DISTRICT 2 SURVEY OFFICE

PERSONNEL

REFERENCE NO. 15

SHEET 15 OF 34

NOTES CANTERBURY

H.C. ROUSOS

R.C. BARNHISEL

P WEAVER

DATE 6/25/97

WEATHER SUN

TEMP. +90°

ROUTE #53

COUNTY SENECA

TOWNSHIP SENECA

SECTION 22

T. 1 N. R 14 E

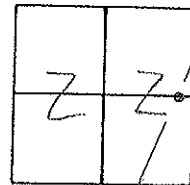
TYPE MONUMENT P.K. & WASHER

ON SURFACE - BELOW SURFACE

LEFT - & PAVT. - RIGHT ON &

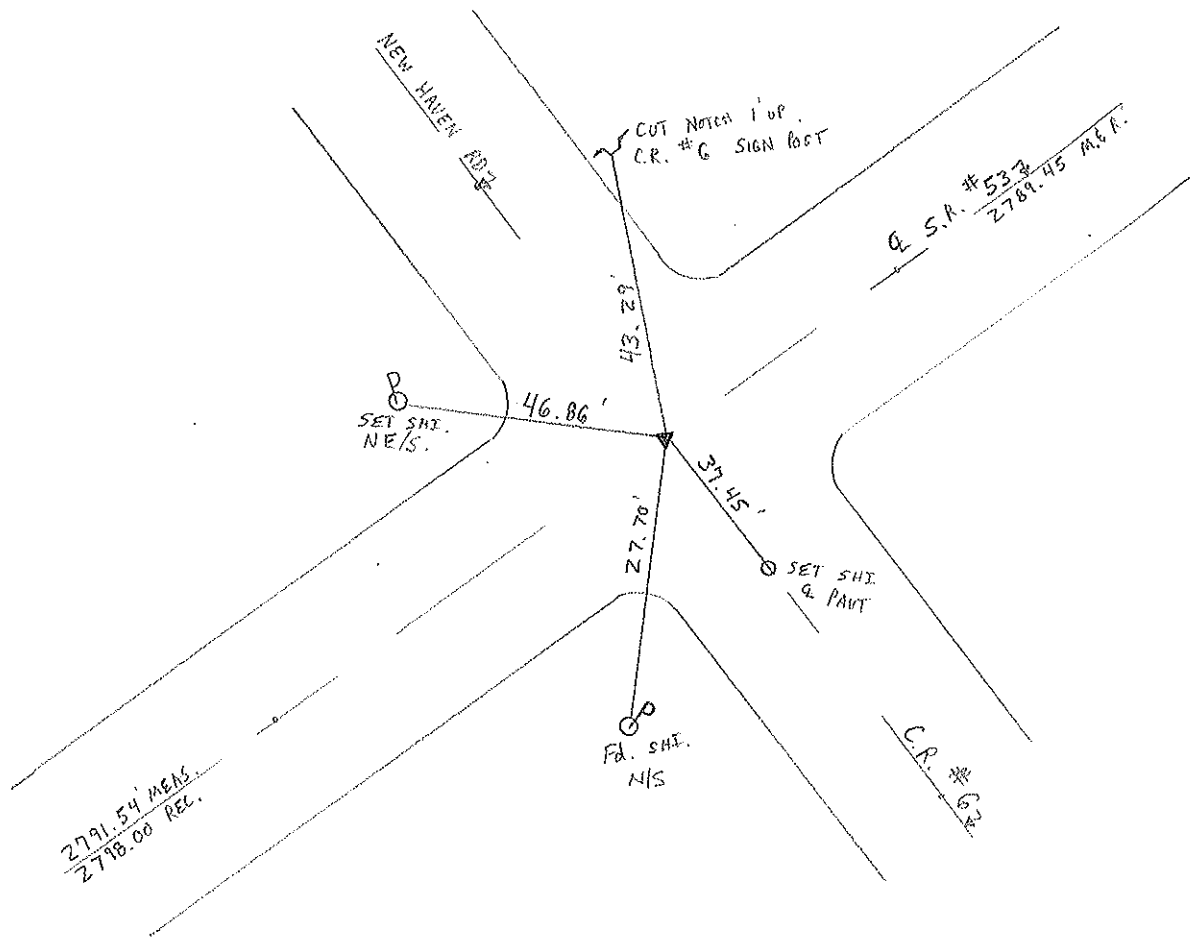
9.2' TO LT. EDGE PAVEMENT

S.L.M. 4+641.16 SLK



RECORD: P.I.  
151+78 = 0.00 AHD.  
PK+WASHER ATOP SAME  
ATOP HINGE NAIL FD.

RESET P.K./WASHER  
 10/10/97  
 M.R.C



# O.D.O.T. DISTRICT 2 SURVEY OFFICE

PERSONNEL

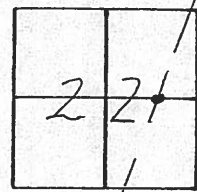
NOTES ALVIN  
 H.C. RIPPLE  
 R.C. BARBOUR  
GEYMAN

REFERENCE NO. 15  
 DRAWN 11/03/89  
 DATE 8/30/88  
 WEATHER SUNNY  
 TEMP. 70°

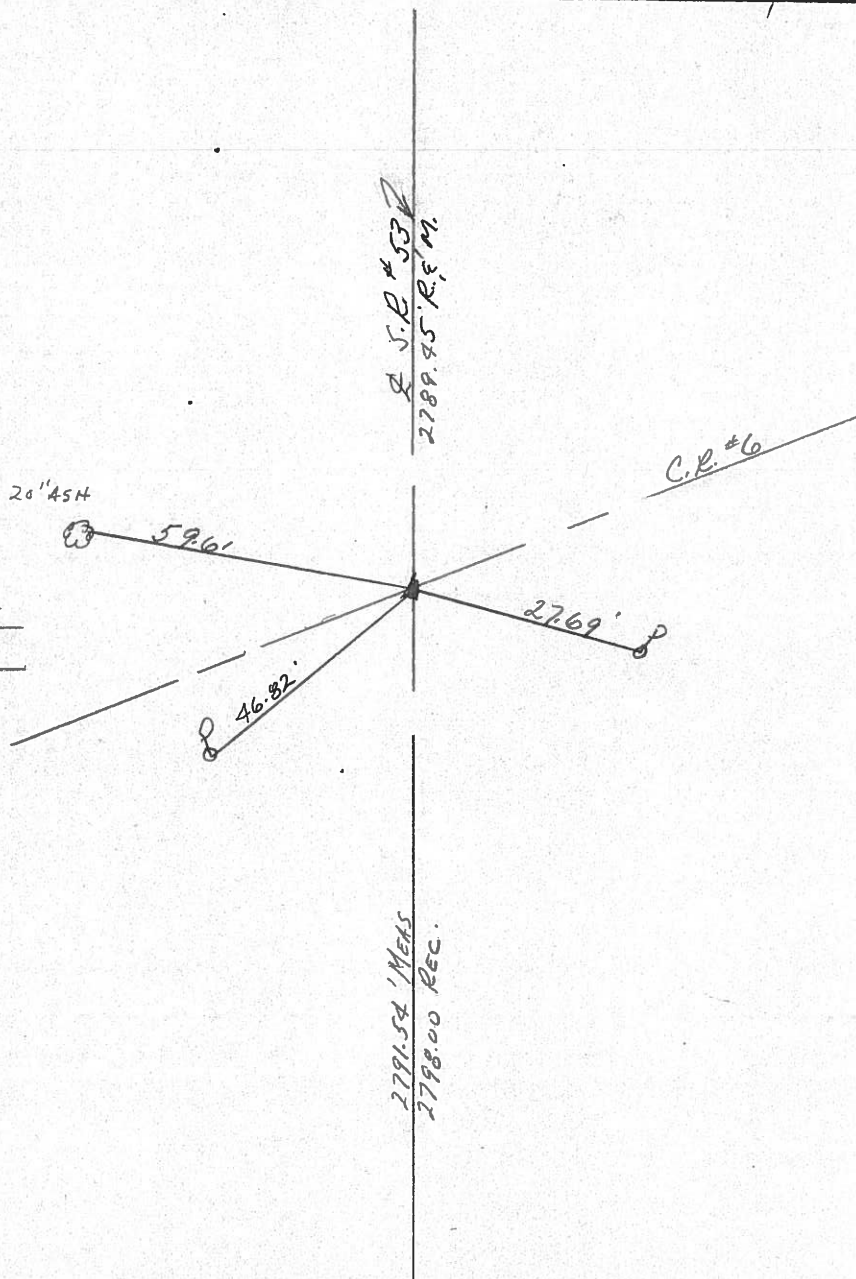
SHEET 15 OF \_\_\_\_\_

ROUTE #53  
 COUNTY SENECA  
 TOWNSHIP SENECA  
 SECTION 22  
T I N R I A E

TYPE MONUMENT P.K. & WASHER  
 ON SURFACE - BELOW \_\_\_\_\_  
 LEFT - C. PAV'T. - RIGHT \_\_\_\_\_  
 \_\_\_\_\_ TO \_\_\_\_\_ EDGE PAVEMENT  
 S.L.M. 2.8746



P.I.  
151+78 = 0+00 AHD  
P.K. & WASHER ATOP SAME  
ATOP HINGE NAIL FD.

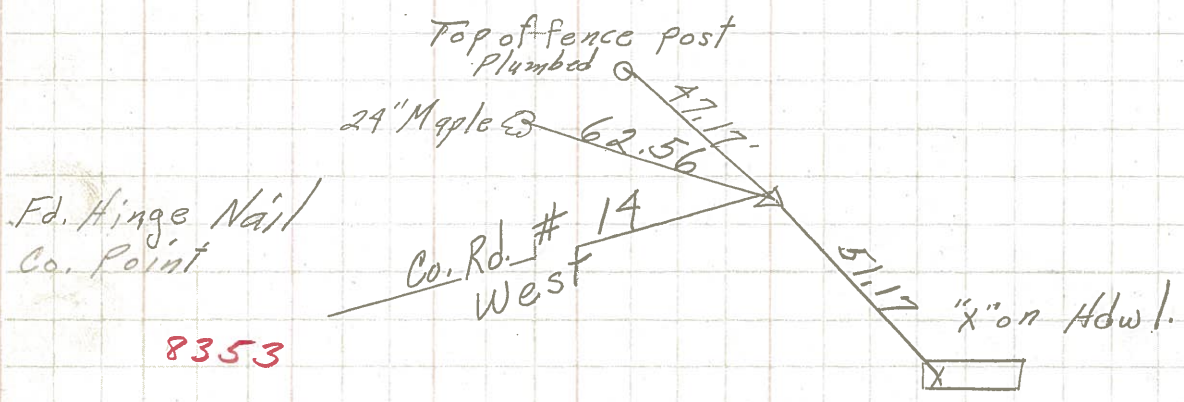




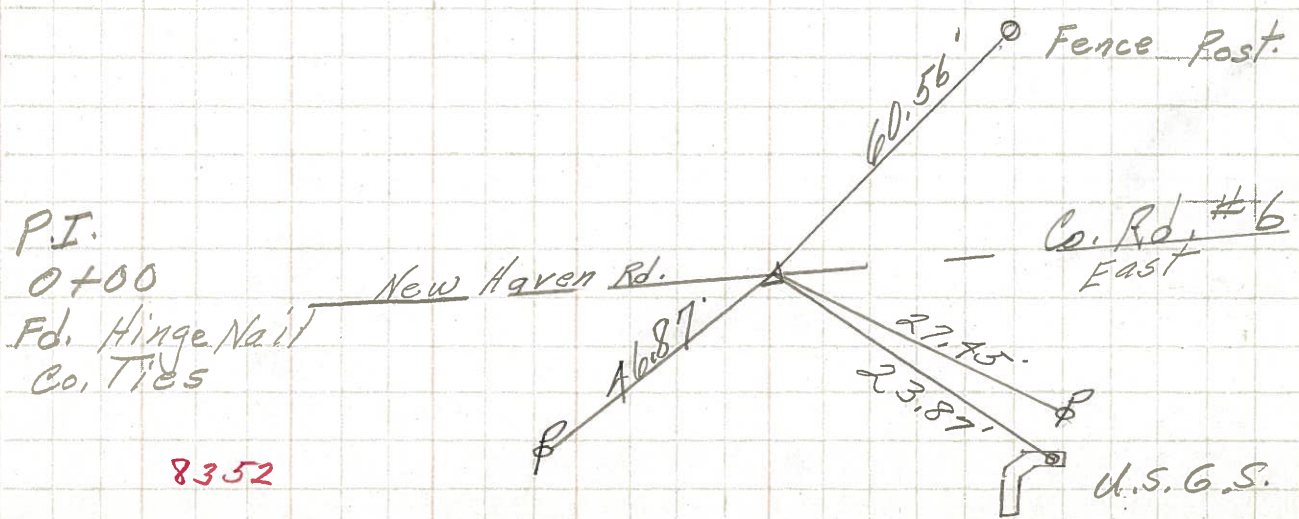
PERSONNEL	TITLE	PERSONNEL	TITLE	COUNTY	DATE
<u>Schneider</u>				<u>Seneca</u>	<u>8-29-69</u>
<u>Mosser</u>				S. R. <u>53</u>	WEATHER <u>Fair</u>
<u>Barbour</u>				SEC. <u>Wyandot Co. Line N.</u>	TEMP. <u>70°</u>
<u>Potts</u>					

DESCRIPTION Ties for Control Points JOB NO. \_\_\_\_\_

(24)



(15)



Fd. Hinge Nail  
Co. Point

P.I.  
0+00  
Fd. Hinge Nail  
Co. Ties