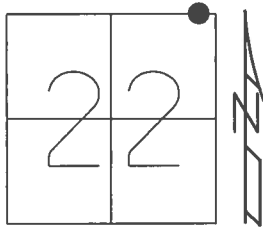


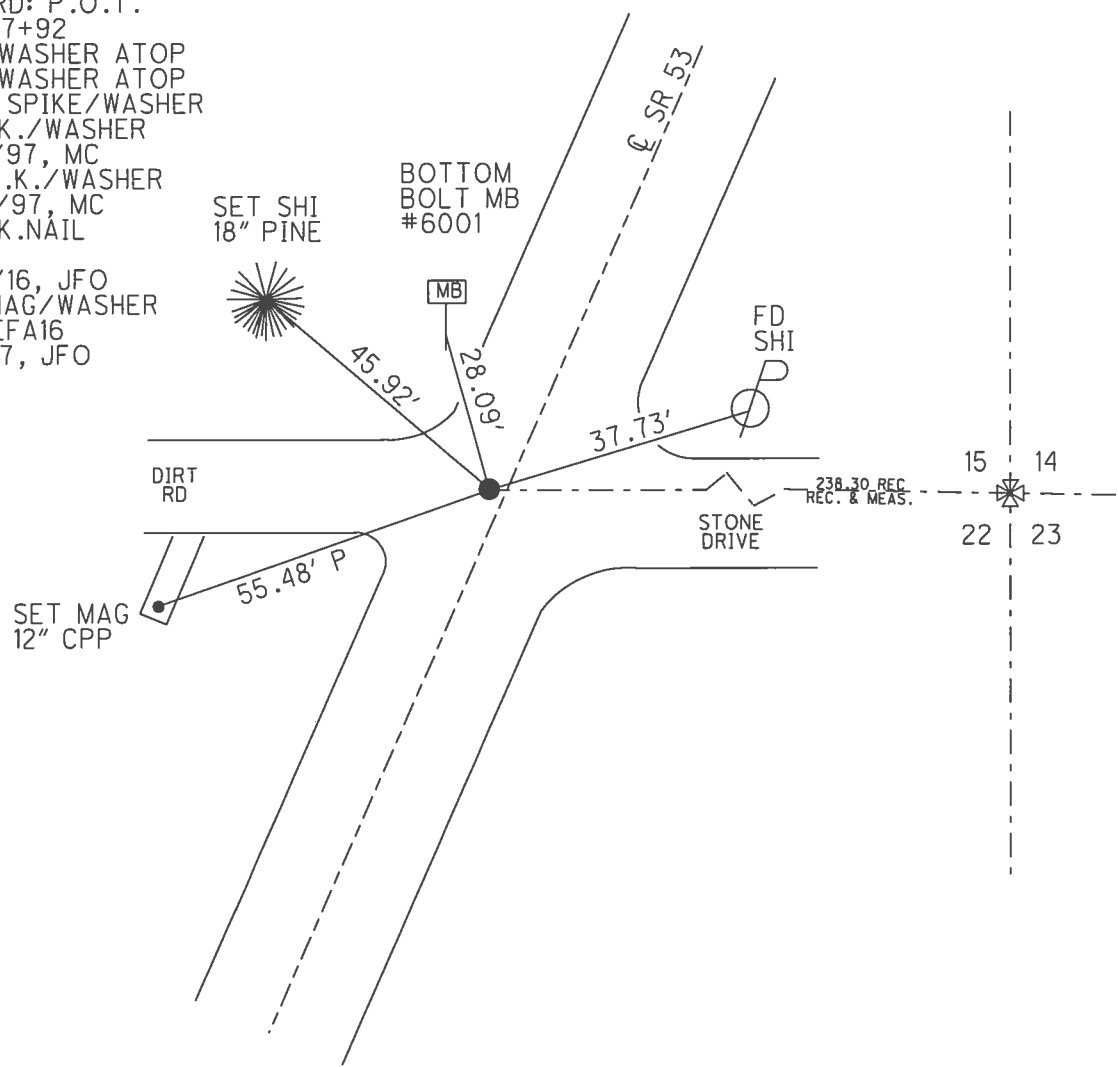
O.D.O.T. DISTRICT 2 SURVEY OFFICE (USE ONLY)

PERSONNEL _____ REFERENCE NO. 16 SHEET 18 OF 41
 NOTES RHOADES DATE 4/25/17 ROUTE SR 53
 H.C. O'DONNELL WEATHER CLOUDY COUNTY SENECA
 R.C. RHOADES TEMP. 58° TOWNSHIP SENECA
 _____ SECTION 22
 _____ T 1 N R 14 E

TYPE MONUMENT P.K.NAIL
 ON SURFACE - ~~BELOW~~ ON _____
 LEFT - ☑ PAV'T - ~~RIGHT~~ 1.4'
9.0' TO LT EDGE PAVEMENT
 S.L.M. 179+52.05
 Grid: Northing: 499792.807 Easting: 1767391.793



RECORD: P.O.T.
 STA.27+92
 P.K./WASHER ATOP
 P.K./WASHER ATOP
 BOAT SPIKE/WASHER
 FD P.K./WASHER
 6/25/97, MC
 SET P.K./WASHER
 10/10/97, MC
 FD P.K.NAIL
 REF16
 4/29/16, JFO
 SET MAG/WASHER
 NEWREF A16
 9/5/17, JFO



O.D.O.T. DISTRICT 2 SURVEY OFFICE

PERSONNEL

REFERENCE NO. 16

SHEET 16 OF 34

NOTES CANTERBURY

H.C. Rousos

R.C. BARNHISEL

WEAVER

DATE 6/25/97

WEATHER SUN

TEMP. +90°

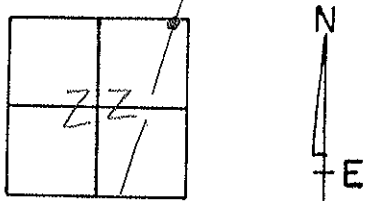
ROUTE #53

COUNTY SENECA

TOWNSHIP SENECA

SECTION 22

T. 1 N. 14 E.



TYPE MONUMENT P.K. & WASHER

ON SURFACE - BELOW SURFACE

LEFT - 6 PAV'T. - RIGHT 1.4' LT &

9.0' TO LT EDGE PAVEMENT

S.L.M. 5+494.10 SLK

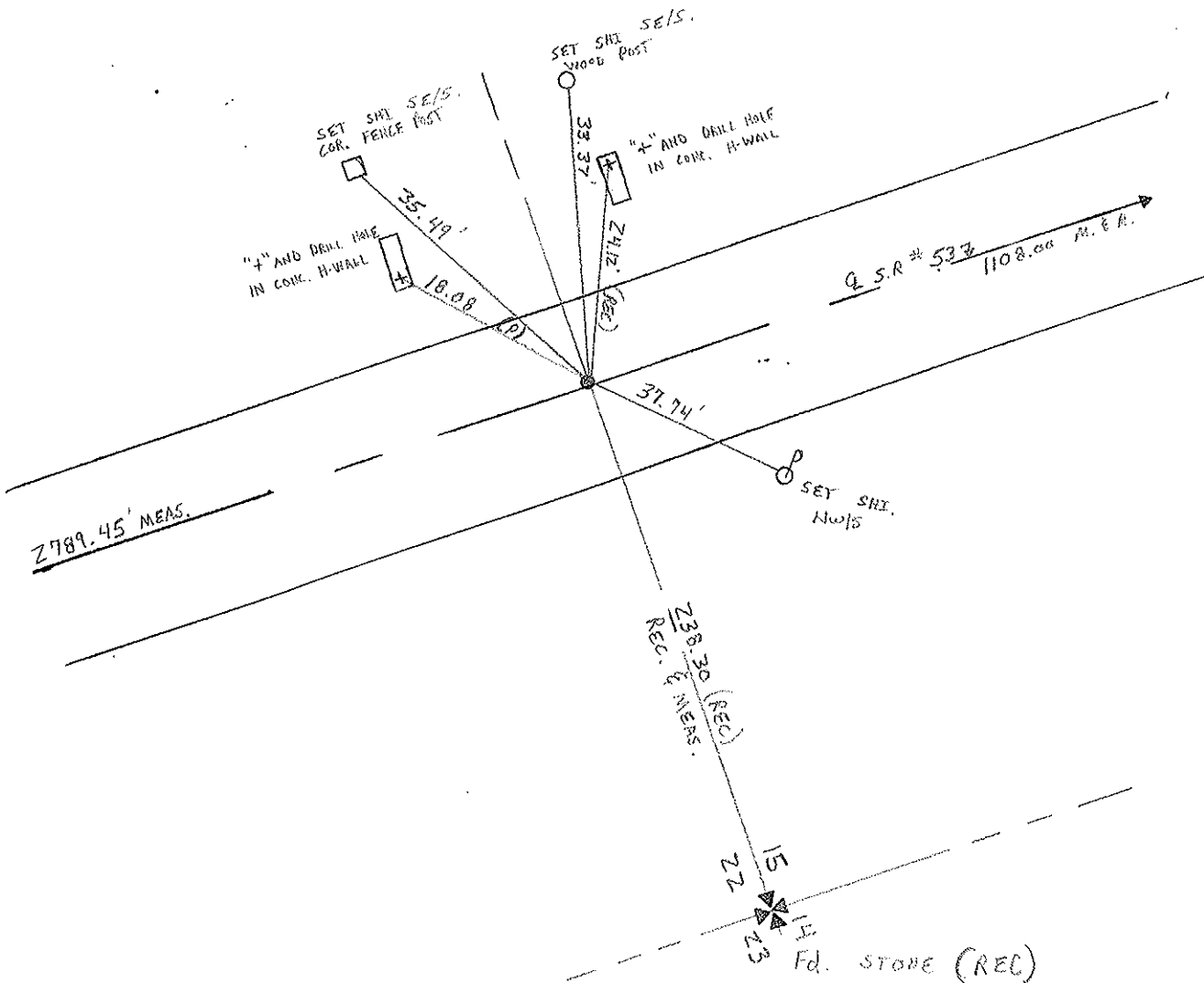
RECORD: P.O.T.

27+92

P.K. + WASHER ATOP SAME

ATOP BOAT SPIRE & WASHER

RESET P.K. & WASHER
 10/10/97
 M.R.C.



O.D.O.T. DISTRICT 2 SURVEY OFFICE

PERSONNEL

REFERENCE NO. 16

SHEET 16 OF

NOTES IRONIN (DRAW)

DRAWN 11/06/89

H.C. RIPPLE

DATE 12/8/89

R.C. BARBOUR } work

WEATHER Cloudy

GEYMAN

TEMP. 25°

ROUTE #53

COUNTY SENECA

TOWNSHIP SENECA

SECTION 22

T 1 N 14 E

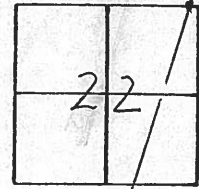
TYPE MONUMENT PK + Washer

ON SURFACE - BELOW SURFACE

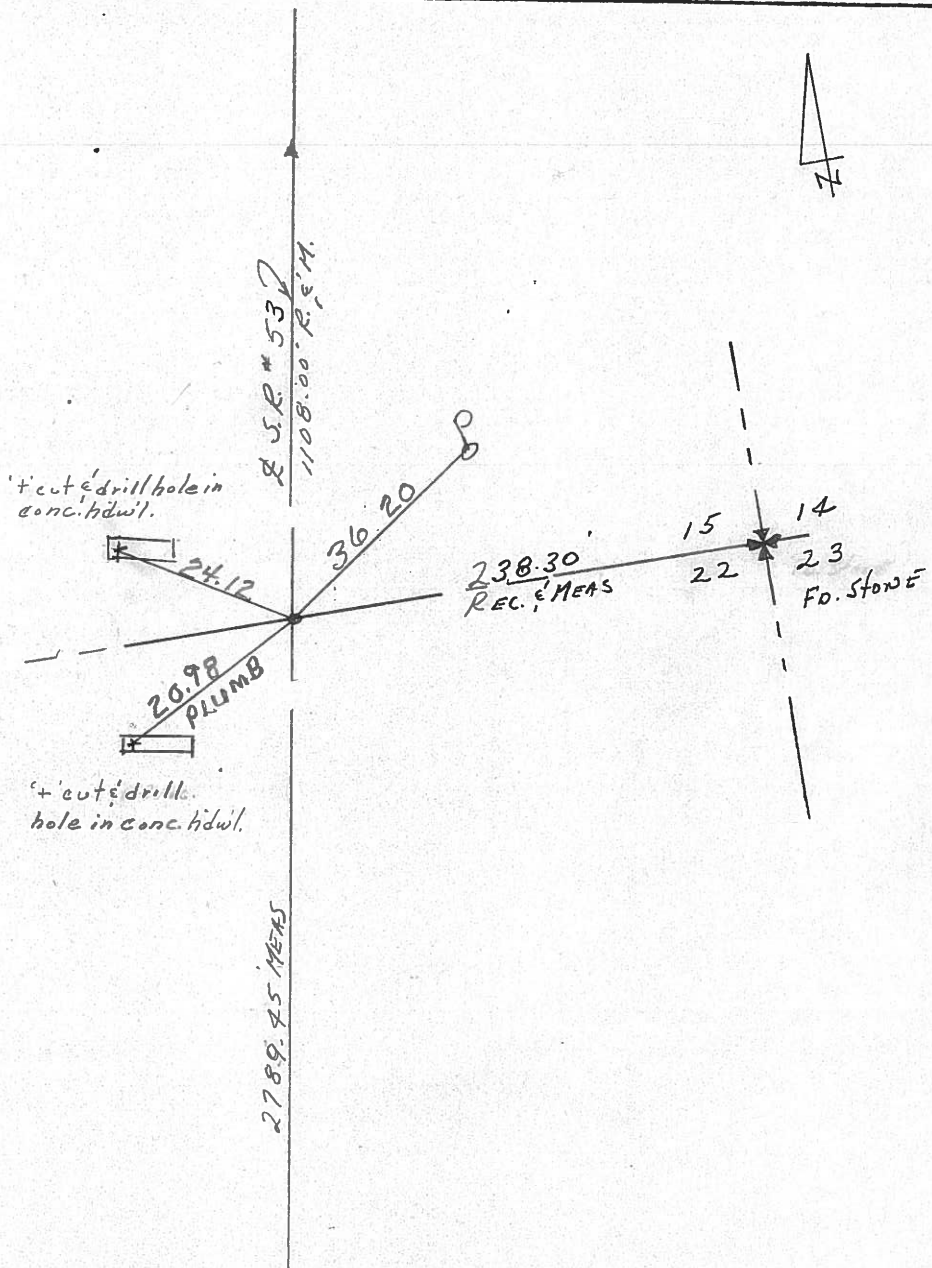
LEFT - 1.3' LEFT

TO EDGE PAVEMENT

S.L.M. 3.4034



P.O.T
27+92
PK + WASHER ATOP
SAME ATOP BOAT SPIKE &
WASHER



County Seneca S.R. 53

Date 8/10/82

Township Seneca

Weather overcast

Section 15 & 22

Temp. 65°

T1N, R14E

Personnel Cronin

Ripple

Geyman

Mosser

Barbour

15	14
22	23



#16

Sec. 'G'

P.O.T.

27+92

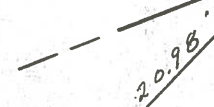
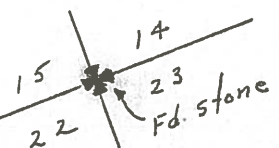
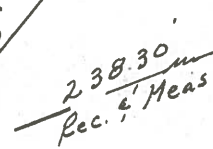
set P.K. & washer atop boat

spike & washer - 1.3 Lt. & P.V.T.

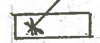
drill hole and
'x' cut in conc. hdwl.



1108' Meas. & Rec.



'x' cut & drill hole
in conc. hdwl.



& R/W S.R. # 537

PERSONNEL	TITLE	PERSONNEL	TITLE
Cronin		Schneider	
Ripple		Mosser	
Geyman		Barbour	

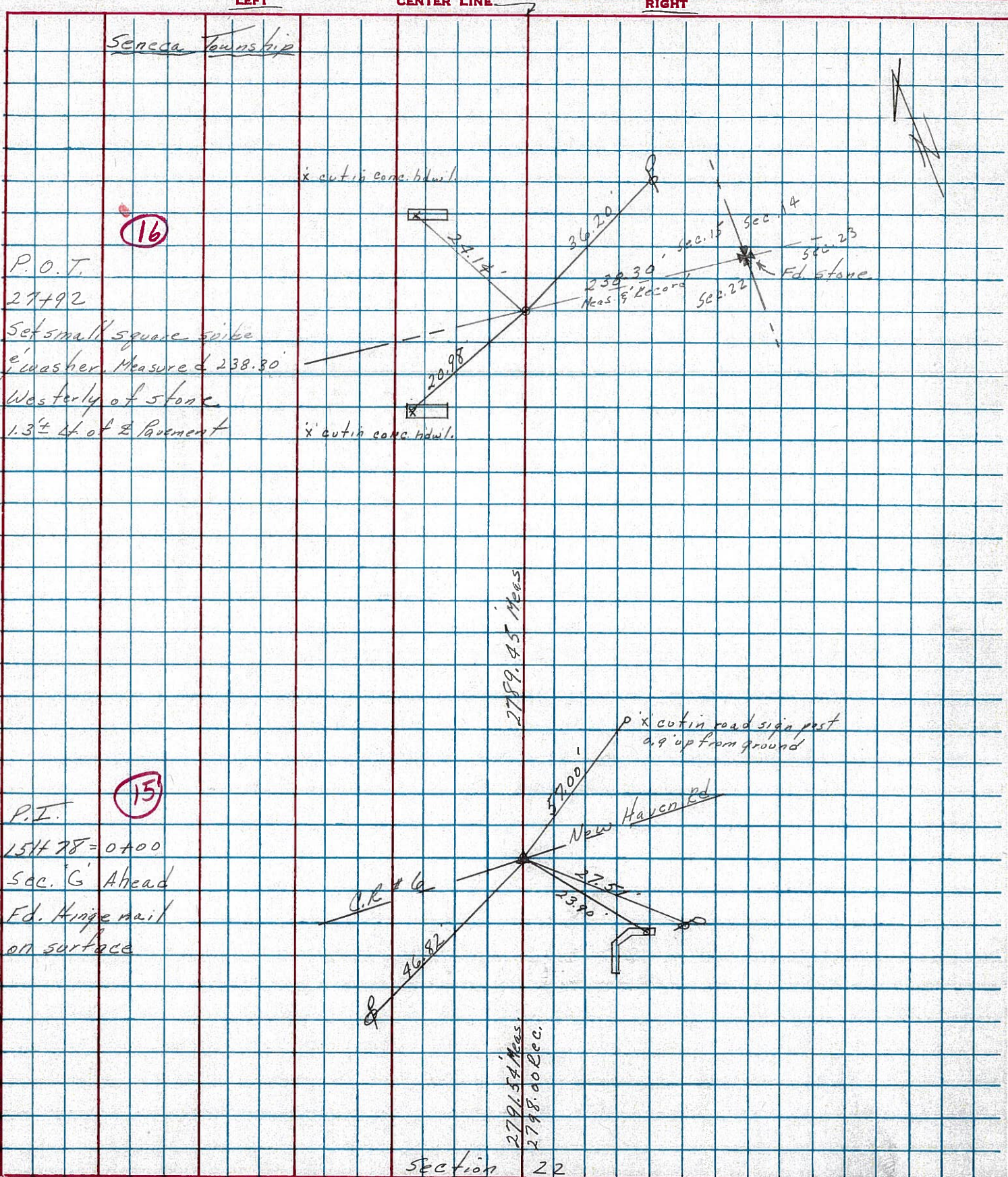
COUNTY Seneca DATE 12/16/75

S. R. # 53 WEATHER cloudy
Field Bk # 23

SEC. I.C.H. #266 F' & G' TEMP. 35°

DESCRIPTION Ties for Control Points

JOB NO.



Section 22

PERSONNEL TITLE PERSONNEL TITLE

COUNTY Seneca DATE

S. R. # 53 WEATHER

SEC. Old 53 TEMP.

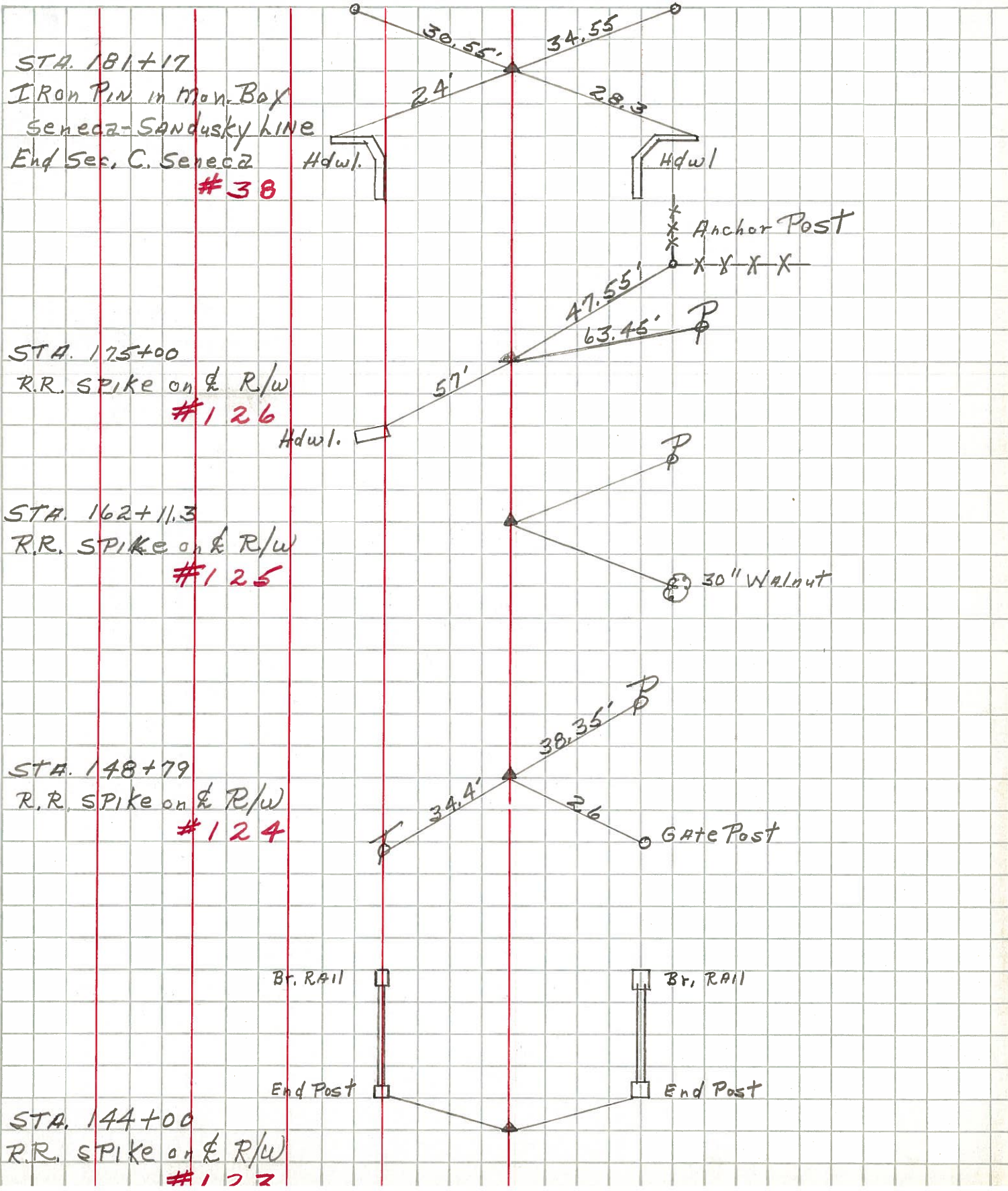
DESCRIPTION

LEFT

CENTER LINE

RIGHT

JOB NO.



STA. 181+17
IRON PIN in Man. Box
Seneca-SANDUSKY LINE
End Sec. C. Seneca
38

STA. 175+00
R.R. SPIKE on & R/w
126

STA. 162+11.3
R.R. SPIKE on & R/w
125

STA. 148+79
R.R. SPIKE on & R/w
124

STA. 144+00
R.R. SPIKE on & R/w
123