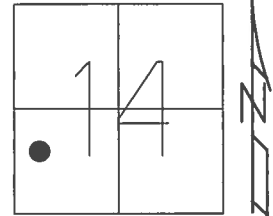


O.D.O.T. DISTRICT 2 SURVEY OFFICE (USE ONLY)

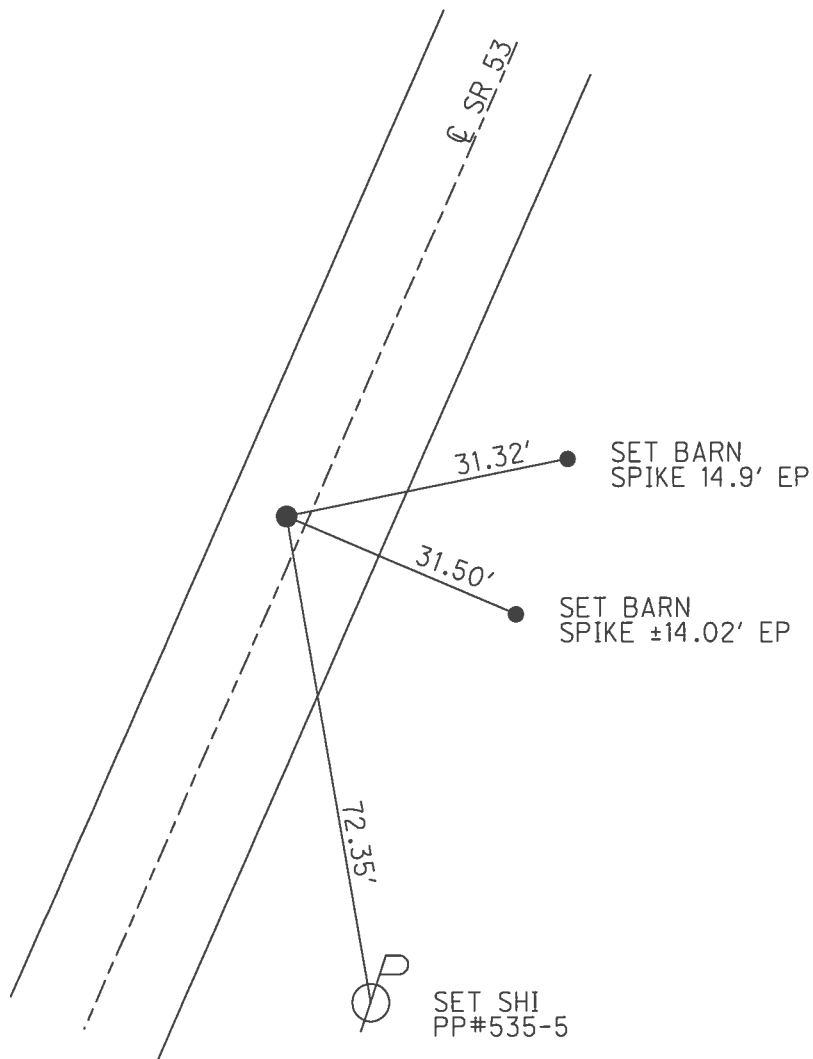
PERSONNEL \_\_\_\_\_ REFERENCE NO. 17 SHEET 19 OF 41  
 NOTES RHOADES DATE 4/25/17 ROUTE SR 53  
 H.C. O'DONNELL WEATHER CLOUDY COUNTY SENECA  
 R.C. RHOADES TEMP. 58° TOWNSHIP SENECA  
 \_\_\_\_\_ SECTION 14  
 \_\_\_\_\_ T 1 N R 14 E

TYPE MONUMENT P.K./WASHER  
~~ON SURFACE~~ - BELOW 3"  
 LEFT - ☉ PAV'T - ~~RIGHT~~ 2'  
9.2' TO LT EDGE PAVEMENT  
 S.L.M. 190+59.88



Grid: Northing: 500830.932 Easting: 1767778.579

RECORD: P.I.  
 $\Delta = 00^\circ 26' \text{ RT}$   
 STA. 39+00  
 P.K./WASHER ATOP  
 P.K./WASHER ATOP  
 BOAT SPIKE/WASHER  
 FD P.K./WASHER  
 6/25/97, MC  
 SET P.K./WASHER  
 10/10/97, MC  
 FD P.K./WASHER  
 3" DOWN  
 REF17  
 5/2/16, JFO  
 SET MAG/WASHER  
 NEWREF17  
 9/6/17, JFO



# O.D.O.T. DISTRICT 2 SURVEY OFFICE

PERSONNEL \_\_\_\_\_

REFERENCE NO. 17

SHEET 17 OF 34

NOTES CANTERBURY

H.C. Rousos

DATE 6/25/97

ROUTE #53

R.C. BARNHISEL

WEATHER SUN

COUNTY SENECA

P WEAVER

TEMP. +90°

TOWNSHIP SENECA

SECTION 14

T I N R H E

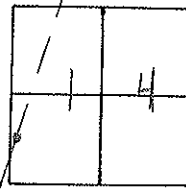
TYPE MONUMENT P.K. + WASHER

ON SURFACE - BELOW SURFACE

LEFT - 0 PAV'T. - RIGHT 2' LT &

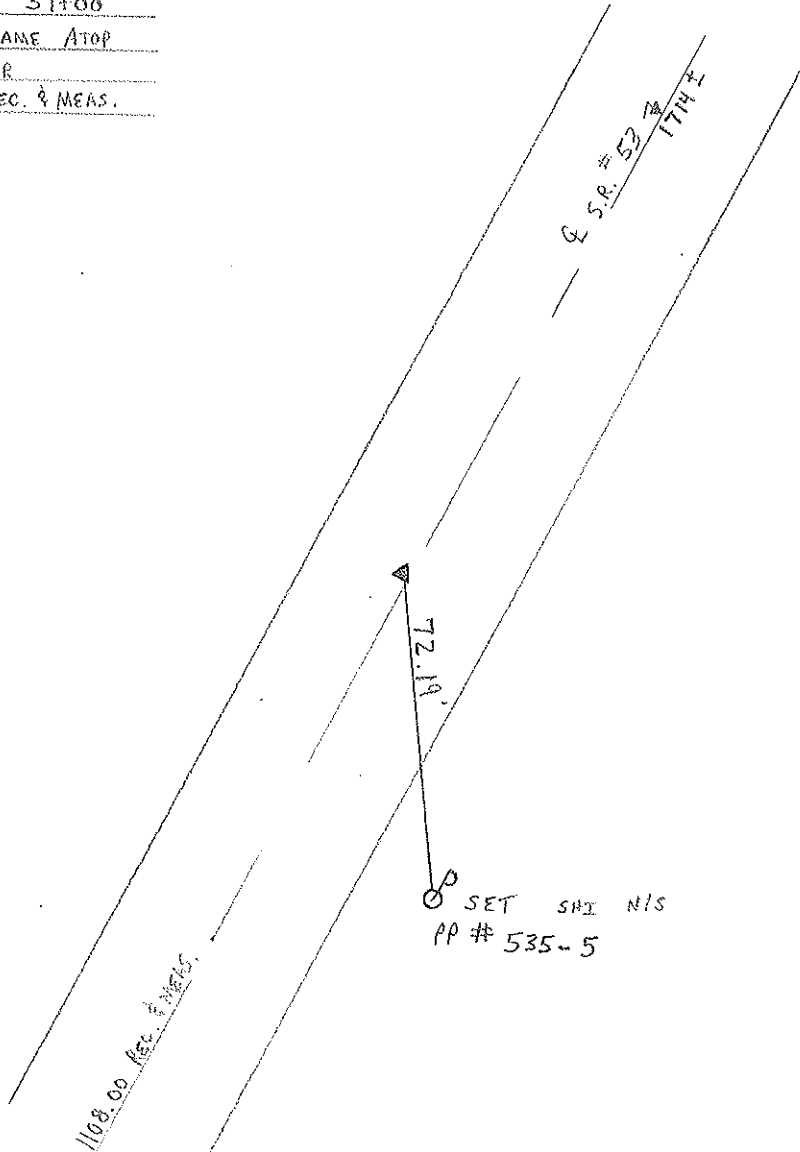
9.2' TO LT EDGE PAVEMENT

S.L.M. 5+832.93 SLK



RECORD: P.I. 39+00  
PK + WASHER ATOP SAME ATOP  
BOAT SPIKE / WASHER  
Δ = 00-26 RT REC. & MEAS.

RESET PK. / WASHER  
 10/10/97  
 M.R.G.



# O.D.O.T. DISTRICT 2 SURVEY OFFICE

PERSONNEL

REFERENCE NO. 17

SHEET 17 OF       

NOTES CROWN (DRAW)

DRAWN 11/06/89

H.C. LIPPLE

DATE 12-8-89

ROUTE #53

R.G. BARBOUR WORK

WEATHER SUNNY

COUNTY SENECA

GEYMAN

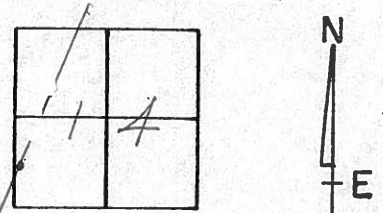
TEMP. 25°

TOWNSHIP SENECA

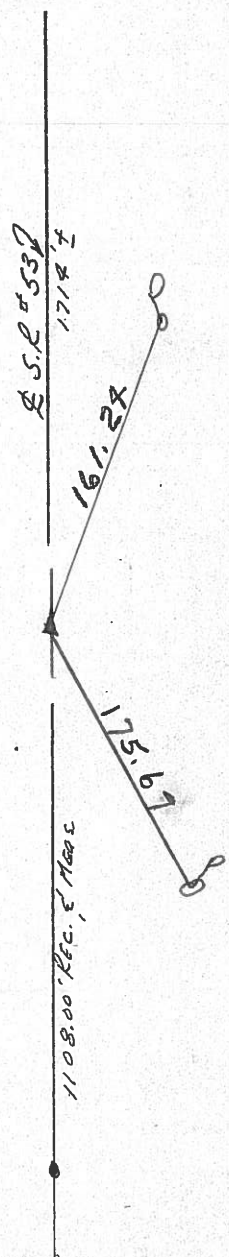
SECTION 14

T. 1 N. R. 14 E.

TYPE MONUMENT PK + Washer  
 ON SURFACE - BELOW SURFACE  
 LEFT - CL PAV'T. - RIGHT 2' LT  
TO EDGE PAVEMENT  
 S.L.M. 3.6132



A = 00° 26' RT. REC. & MEAS.  
P.I. - 39+00  
P.K. + Washer  
ATOP SAME ATOP BOAT SPIKE  
& WASHER



County Seneca S.R. #53

Township Seneca

Section 14

T1N, R14E

Personnel Cronin

Ripple

Geyman

Mosser

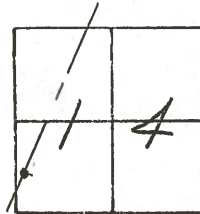
Barbour

#17

Date 8/10/82

Weather overcast

Temp. 6.5°



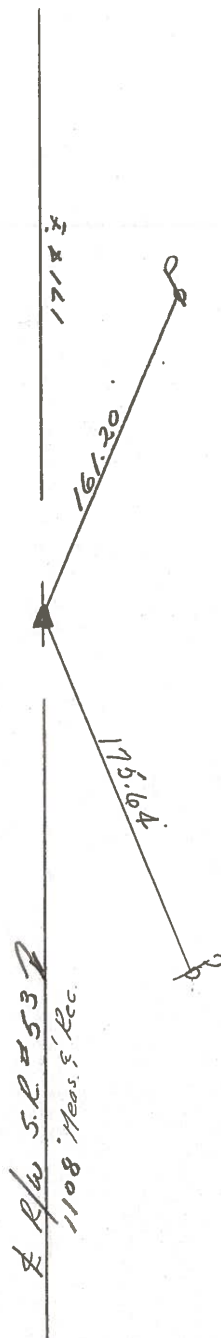
$\Delta = 00^{\circ}26'$  Rt. Plan & Meas

P.I. \_\_\_\_\_

39+00

set P.K. & washer at top boat

spike & washer - 2.3' Lt. & Permit.



PERSONNEL	TITLE	PERSONNEL	TITLE
Cronin		Schneider	
Ripple		Mosser	
Geyman		Barbour	

COUNTY Seneca

DATE 12/17/75

S. R. # 53

WEATHER overcast

SEC. I.C.H. #266 'G'

TEMP. 30°

DESCRIPTION Ties for Control Points

JOB NO. \_\_\_\_\_

