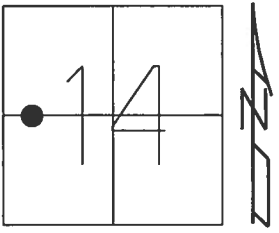


O.D.O.T. DISTRICT 2 SURVEY OFFICE (USE ONLY)

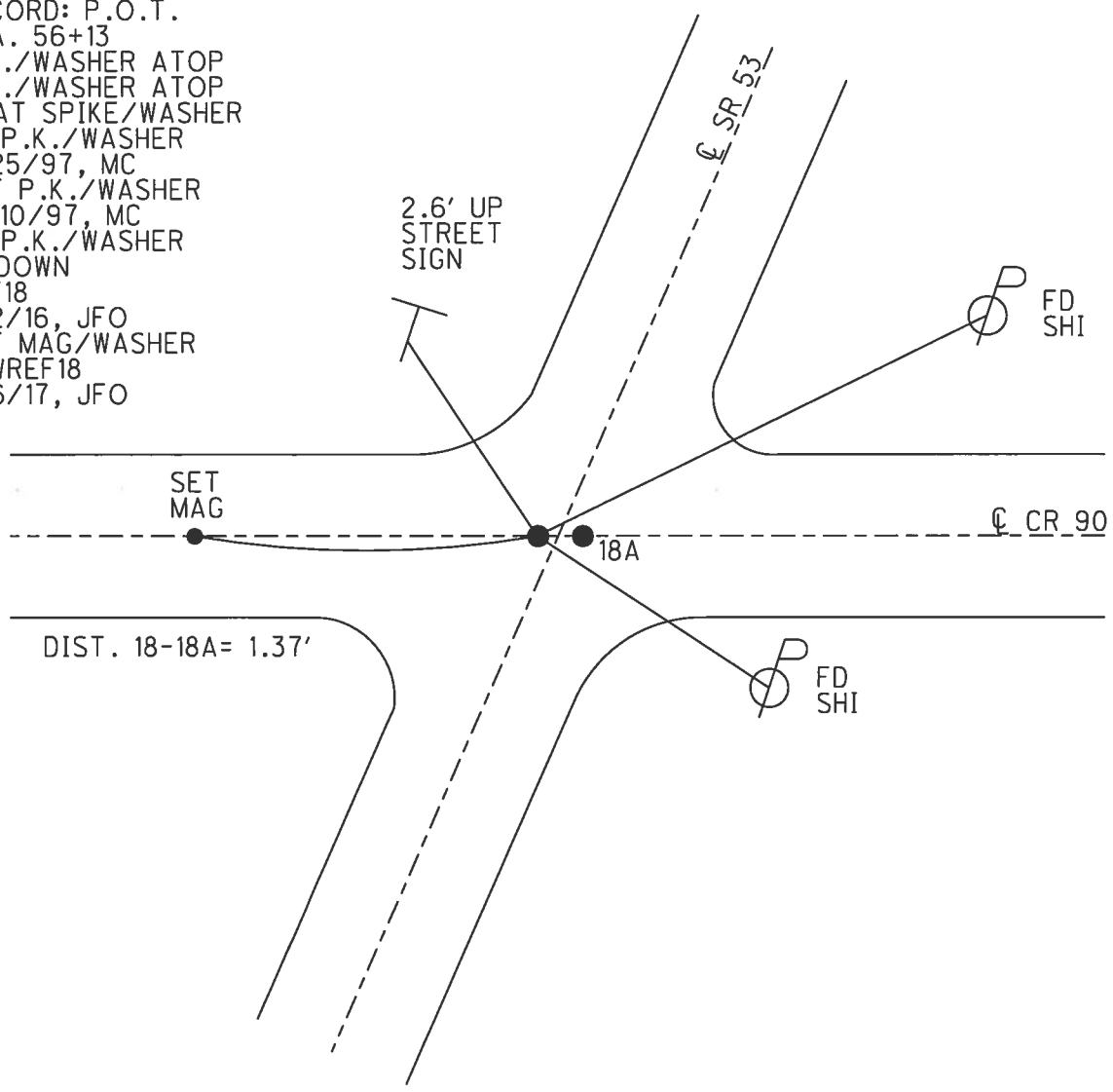
PERSONNEL _____ REFERENCE NO. 18 SHEET 20 OF 41
 NOTES RHOADES DATE 4/25/17 ROUTE SR 53
 H.C. O'DONNELL WEATHER CLOUDY COUNTY SENECA
 R.C. RHOADES TEMP. 58° TOWNSHIP SENECA
 _____ SECTION 14
 _____ T 1 N R 14 E

TYPE MONUMENT P.K./WASHER
~~ON SURFACE~~ - BELOW 3"
 LEFT - ☉ PAV'T - ~~RIGHT~~ 0.3'
11.2' TO RT EDGE PAVEMENT
 S.L.M. 207+76.05



Grid: Northing: 502434.549 Easting: 1768389.818

- RECORD: P.O.T.
- STA. 56+13
- P.K./WASHER ATOP
- P.K./WASHER ATOP
- BOAT SPIKE/WASHER
- FD P.K./WASHER
- 6/25/97, MC
- SET P.K./WASHER
- 10/10/97, MC
- FD P.K./WASHER
- 3" DOWN
- REF18
- 5/2/16, JFO
- SET MAG/WASHER
- NEWREF18
- 9/6/17, JFO



O.D.O.T. DISTRICT 2 SURVEY OFFICE

PERSONNEL

REFERENCE NO. 18

SHEET 18 OF 34

NOTES CANTERBURY

H.C. Rousos

R.C. BARNHISEL

F WEAVER

DATE 6/25/97

WEATHER SUN

TEMP. +90°

ROUTE # 53

COUNTY SENECA

TOWNSHIP SENECA

SECTION 14

T 1 N R 14 E

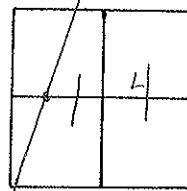
TYPE MONUMENT P.K. + WASHERS

ON SURFACE - BELOW SURFACE

LEFT - 0 PAV'T. - RIGHT 0.3' LT & PT=A

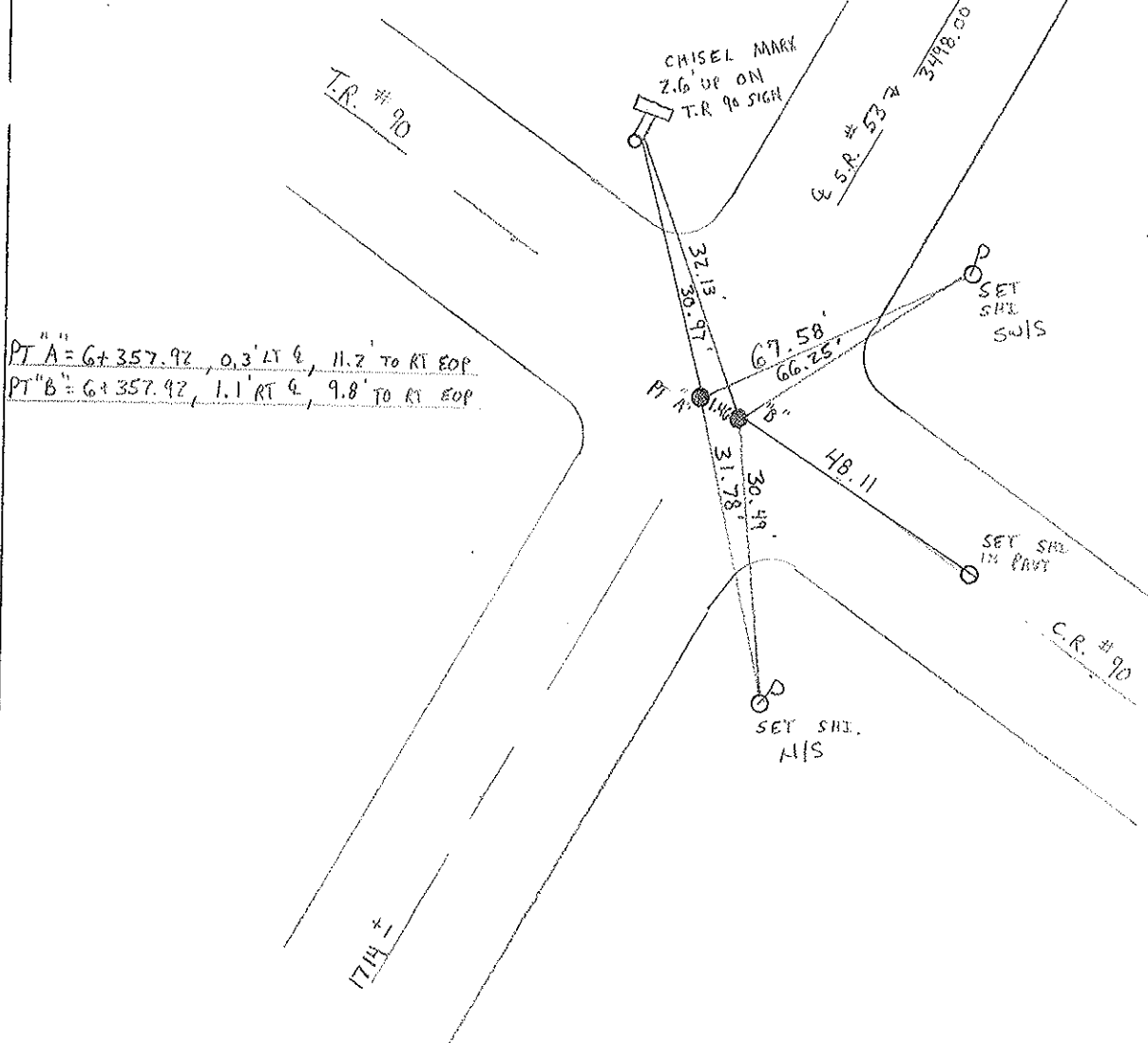
11.2' TO RT EDGE PAVEMENT

S.L.M. 6+357.92



RECORD: POT 56+13
 PK + WASHER ATOP SAME
 ATOP BOAT SPIKE AND
 WASHER.

RESET PK/WASHER @
 BOON 10/10/97
 M.R.C.



PT "A" = 6+357.92, 0.3' LT &, 11.2' TO RT EOP
 PT "B" = 6+357.92, 1.1' RT &, 9.8' TO RT EOP

O.D.O.T. DISTRICT 2 SURVEY OFFICE

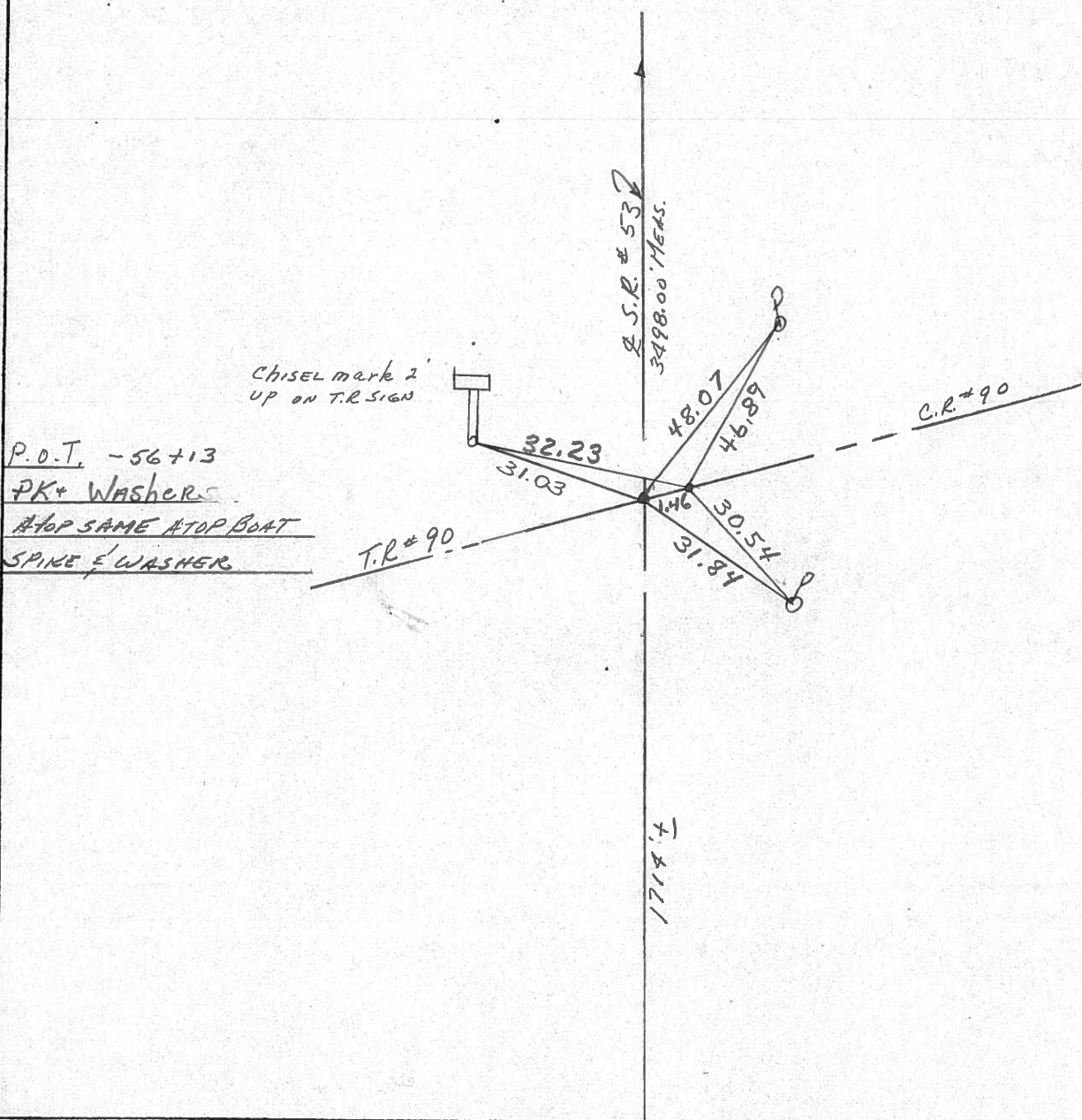
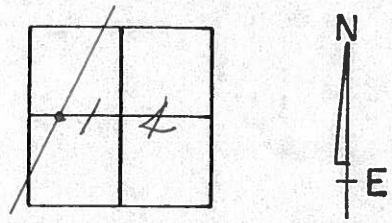
PERSONNEL

NOTES CRONIN (DRAW)
 H.C. RIPPLE
 R.C. BARBOUR WORK
GEYMAN

REFERENCE NO. 18
 DRAWN 11/06/89
 DATE 12/8/89
 WEATHER SUNNY
 TEMP. 25

SHEET 18 OF _____
 ROUTE #53
 COUNTY SENECA
 TOWNSHIP SENECA
 SECTION 14
T 1 N R 14 E

TYPE MONUMENT P.K. + Washer
 ON SURFACE - BELOW SURFACE
 LEFT - ☉ PAV'T. - RIGHT ☉ 1.1' RT.
 TO EDGE PAVEMENT
 S.L.M. 3.9379



County Seneca S.R. 53

Date 8/10/82

Township Seneca

Weather overcast

Section 14

Temp. 65°

T/N, R/E
Personnel Cronin

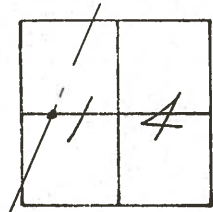
Ripple

Geyman

Mosser

Barbour

#18



P.O.T.

56+13

set P.K. & washer at top boat
spike & washer - 1.5' Lt. & Pavmt.

'x' cut in
conc. hdwl.



plumbed
24.95'

23.98'

Twp. Rd. #90

3498' Meas from
Sta. 39400 to 74400

48.02'

46.84'

Co. Rd. #90

1.46'

30.54'

31.84'

S.R. #53
1719'



PERSONNEL TITLE PERSONNEL TITLE
 Cronin _____ Schneider _____
 Ripple _____ Mosser _____
 Geyman _____ Barbour _____

COUNTY Seneca DATE 12/17/75
 S. R. # 53 WEATHER overcast
 SEC. I.C.H. # 266 'G' TEMP. 30°

DESCRIPTION Ties for Control Points LEFT CENTER LINE RIGHT JOB NO.

