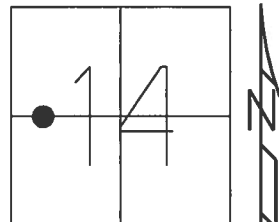


O.D.O.T. DISTRICT 2 SURVEY OFFICE (USE ONLY)

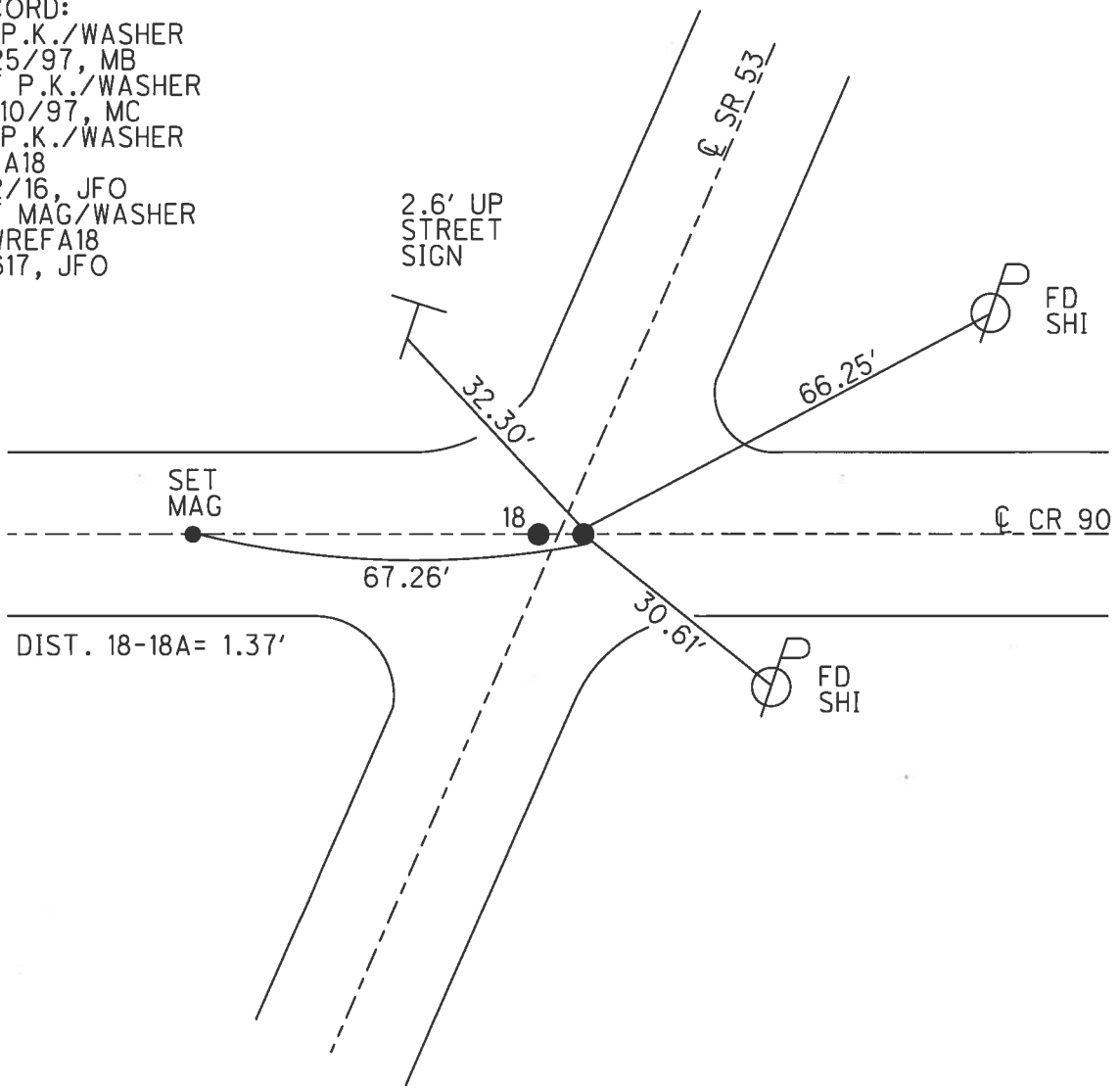
PERSONNEL _____ REFERENCE NO. 18 A SHEET 21 OF 41
 NOTES RHOADES DATE 4/25/17 ROUTE SR 53
 H.C. O'DONNELL WEATHER CLOUDY COUNTY SENECA
 R.C. RHOADES TEMP. 58° TOWNSHIP SENECA
 _____ SECTION 14
 _____ T 1 N R 14 E

TYPE MONUMENT P.K./WASHER
~~ON SURFACE~~ - BELOW 3"
~~LEFT~~ - ☉ PAV'T - RIGHT 1'
9.8' TO RT EDGE PAVEMENT
 S.L.M. 207+76.05



Grid: Northing: 502434.602 Easting: 1768391.212

RECORD:
 FD P.K./WASHER
 6/25/97, MB
 SET P.K./WASHER
 10/10/97, MC
 FD P.K./WASHER
 REFA18
 5/2/16, JFO
 SET MAG/WASHER
 NEWREFA18
 9/6/17, JFO



O.D.O.T. DISTRICT 2 SURVEY OFFICE

PERSONNEL

REFERENCE NO. 18

SHEET 18 OF 34

NOTES CANTERBURY

H.C. Rousos

R.C. BARNHISEL

F WEAVER

DATE 6/25/97

WEATHER SUN

TEMP. +90°

ROUTE # 53

COUNTY SENECA

TOWNSHIP SENECA

SECTION 14

T 1 N R 14 E

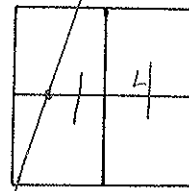
TYPE MONUMENT P.K. + WASHERS

ON SURFACE - BELOW SURFACE

LEFT - 0 PAV'T. - RIGHT 0.3' LT & PT=A

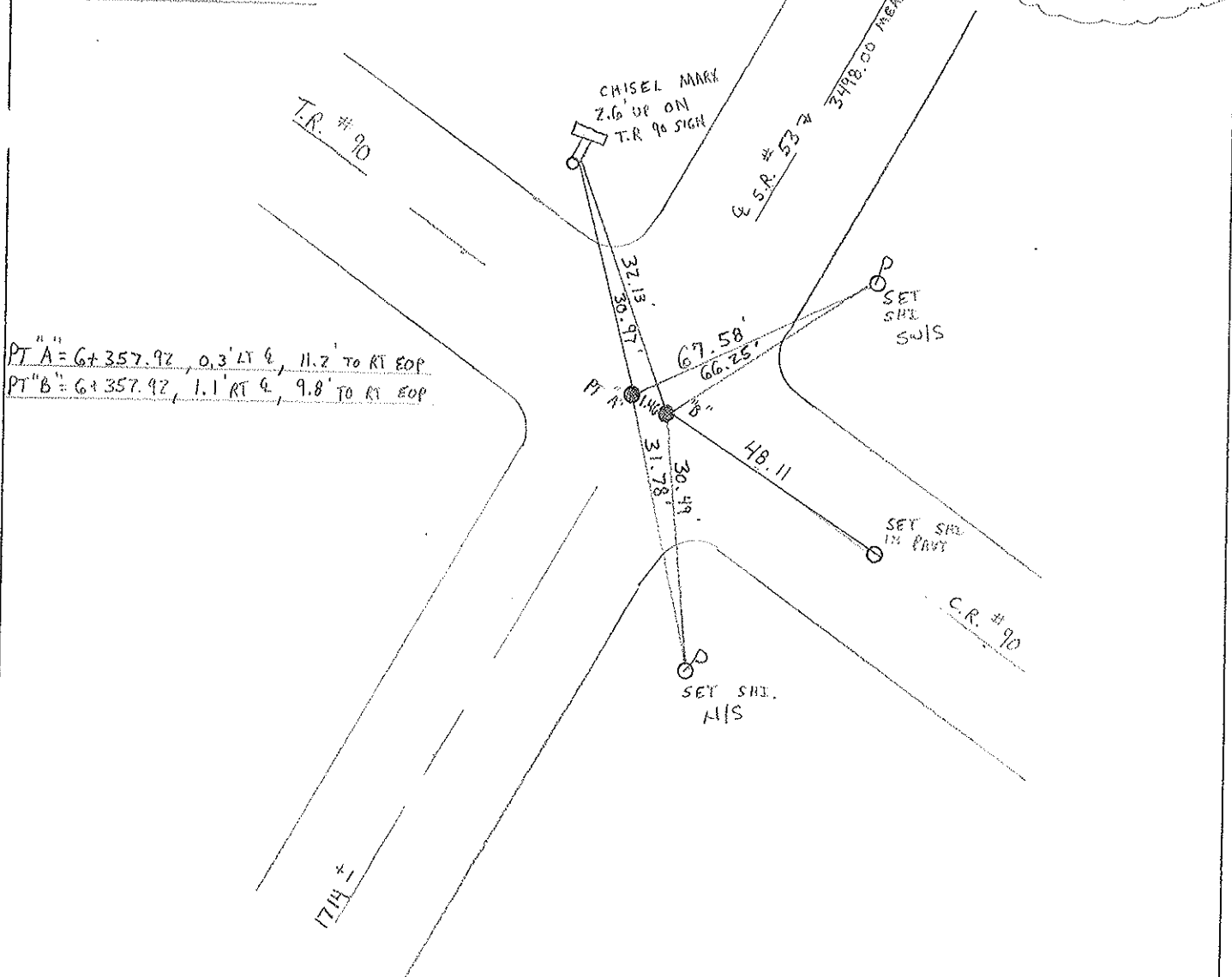
11.2' TO RT EDGE PAVEMENT

S.L.M. 6+357.92



RECORD: POT 56+13
 PK + WASHER ATOP SAME
 ATOP BOAT SPIKE AND
 WASHER.

RESET PK/WASHER @
 BOON 10/10/97
 M.R.C.



PT "A" = 6+357.92, 0.3' LT &, 11.2' TO RT EOP
 PT "B" = 6+357.92, 1.1' RT &, 9.8' TO RT EOP

O.D.O.T. DISTRICT 2 SURVEY OFFICE

PERSONNEL

REFERENCE NO. 18

SHEET 18 OF

NOTES CRONIN (DRAW)

DRAWN 11/06/89

H.C. RIPPLE

DATE 12/8/89

R.G. BARBOUR } WORK

WEATHER SUNNY

GEYMAN

TEMP. 25°

ROUTE #53

COUNTY SENECA

TOWNSHIP SENECA

SECTION 14

T 1 N R 14 E

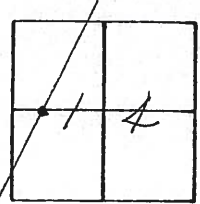
TYPE MONUMENT P.K. + Washer

ON SURFACE - BELOW SURFACE

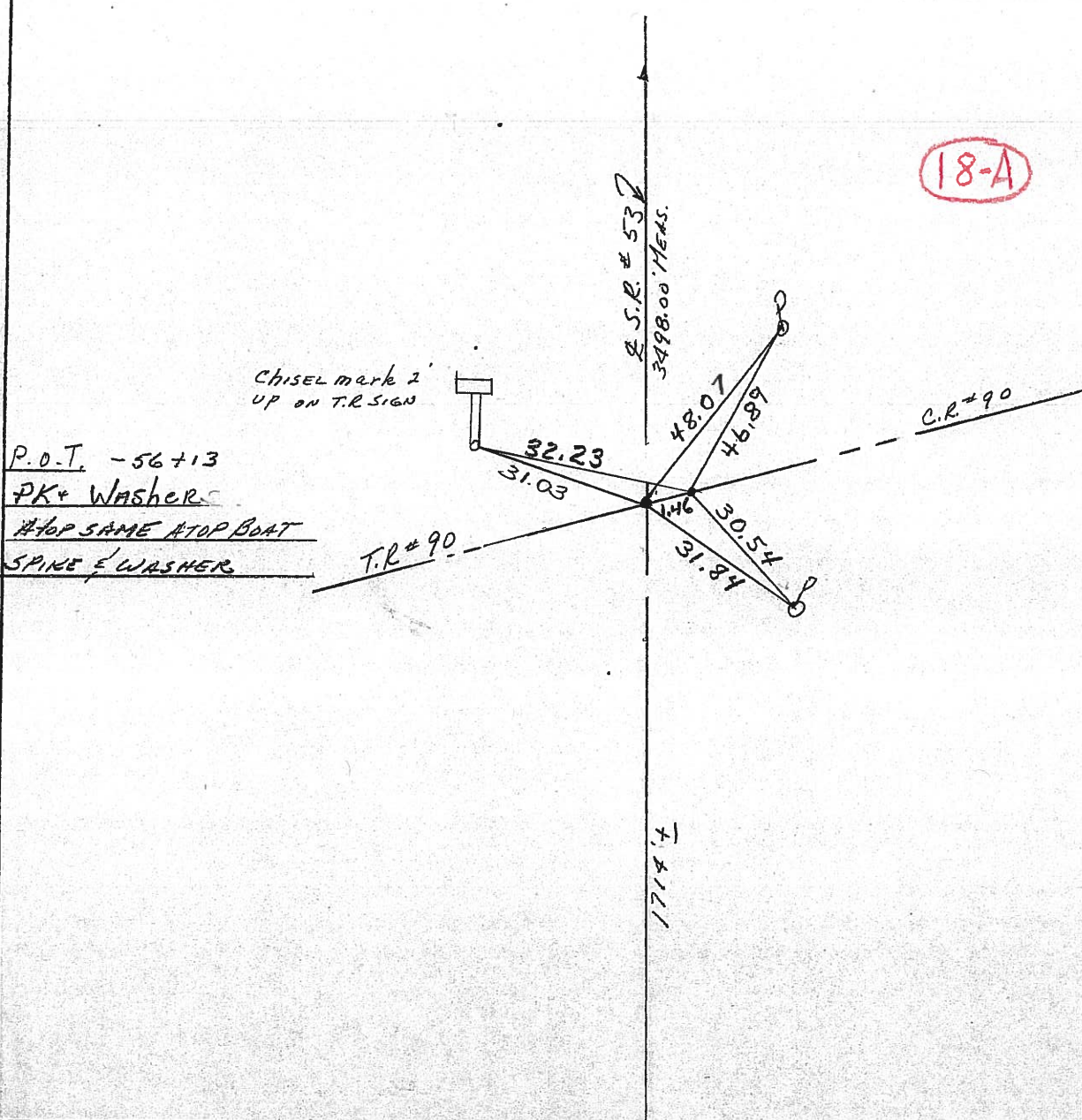
LEFT- & PAV'T. - RIGHT 1.1' RT.

 TO EDGE PAVEMENT

S.L.M. 3.9379



18-A



O.D.O.T. DISTRICT 2 SURVEY OFFICE

SHEET

OF

County Seneca S. R. 53

Date 8/10/82

Township Seneca

Weather overcast

Section 14

Temp. 65°

T1N, R14E

Personnel Cronin

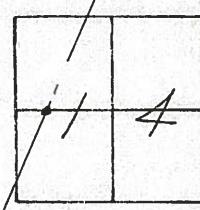
Ripple

Geyman

Mosser

Barbour

~~#18~~

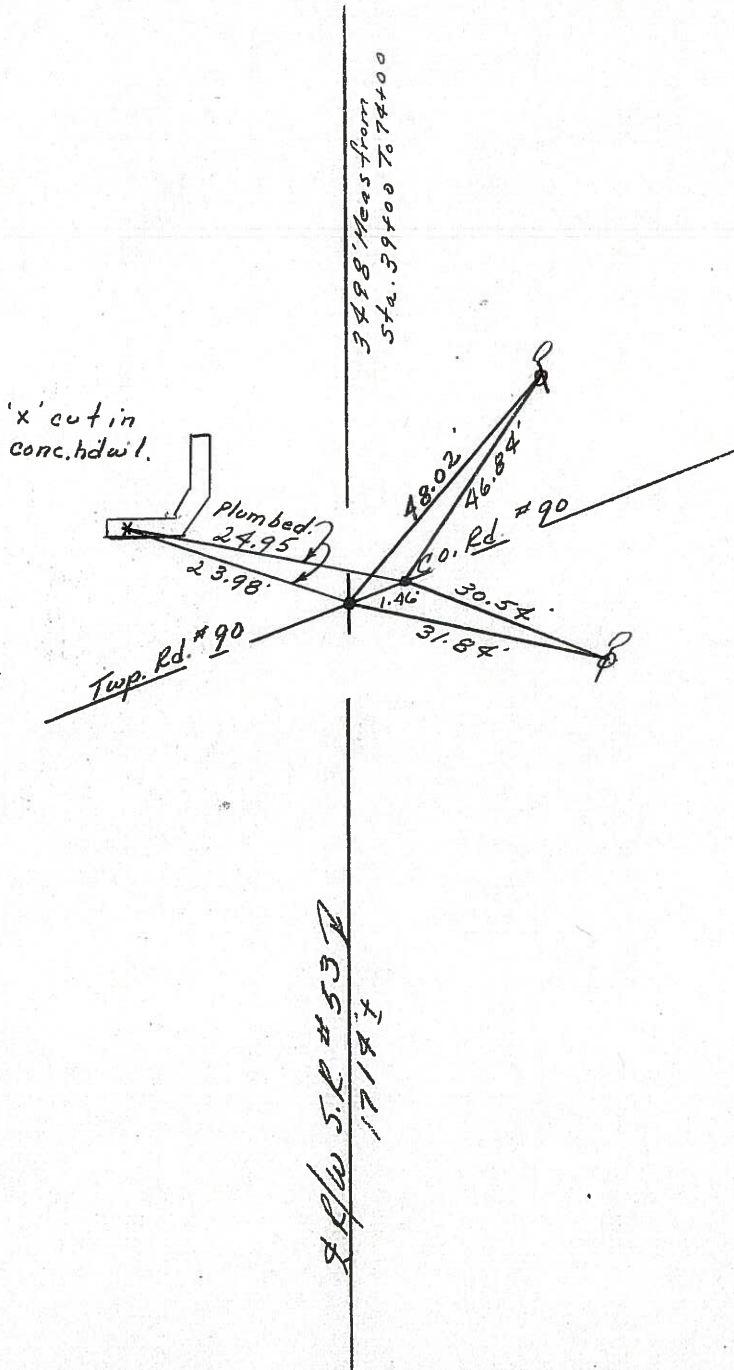


(18-A)

P.O.T.

56+13

set P.K. & washer atop boat
spike & washer - 1.5' Lt. & Paint



S.R./W S.R. #53
17171

PERSONNEL TITLE PERSONNEL TITLE

Cronin Schneider
Ripple Mosser
Geyman Barbour

COUNTY Seneca

DATE 12/17/75

S. R. # 53

WEATHER overcast

SEC. I.C.H. #266 'G'

TEMP. 30°

DESCRIPTION Ties for Control Points

JOB NO.

LEFT

CENTER LINE

RIGHT

Seneca Township

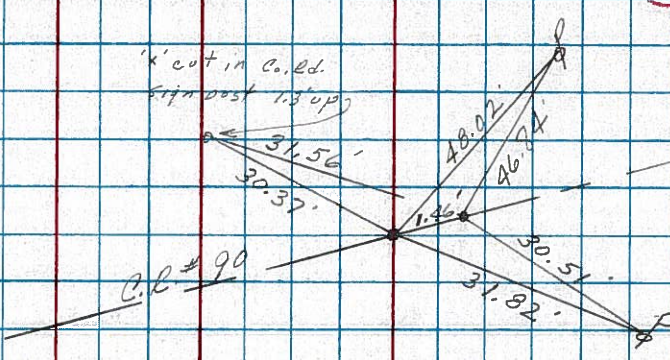
Section 14

18-A

16

P.O.T.
56+13
set small square
spike & washer
1.5' ± Lt. of Pavement

'cut in c. l. d.
sign post 1.5' up

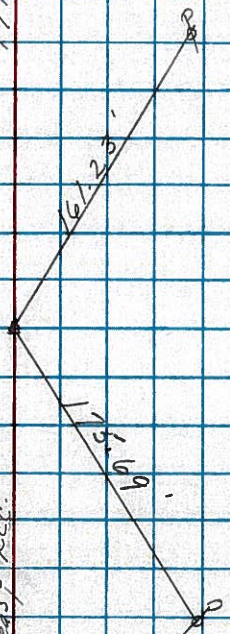


17

Δ = 00° 26' Rt Plan & Meas
P.I.
39+00
set small square
spike & washer
2.3' ± Lt. of Pavement

1718 ±

1108' Meas & Rec.



Section 14