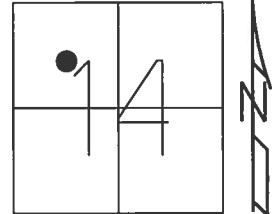


O.D.O.T. DISTRICT 2 SURVEY OFFICE (USE ONLY)

PERSONNEL \_\_\_\_\_ REFERENCE NO. 19 SHEET 22 OF 41

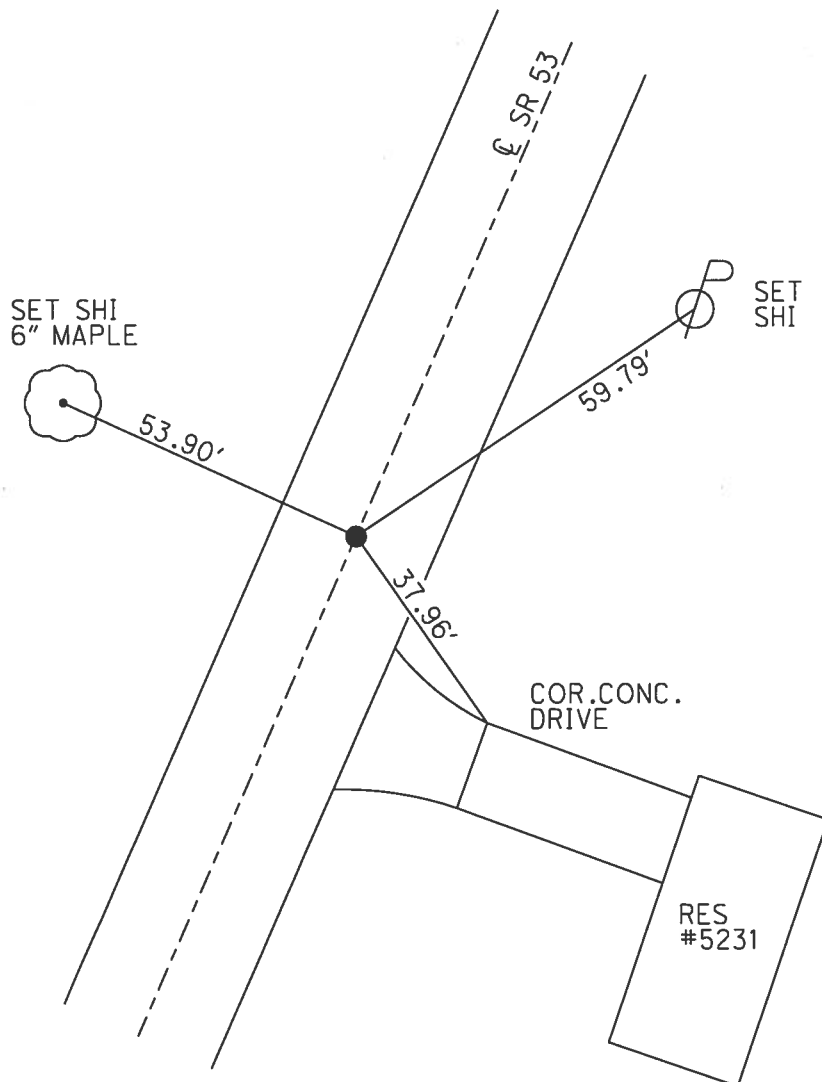
NOTES RHOADES DATE 4/21/17 ROUTE SR 53  
 H.C. O'DONNELL WEATHER CLOUDY COUNTY SENECA  
 R.C. RHOADES TEMP. 54° TOWNSHIP SENECA  
 \_\_\_\_\_ SECTION 14  
 \_\_\_\_\_ T 1 N R 14 E

TYPE MONUMENT P.K./WASHER  
 ON SURFACE - ~~BELOW~~ ON  
 LEFT - ☉ PAV'T - RIGHT ON  
11.0' TO RT EDGE PAVEMENT  
 S.L.M. 225+24.63



Grid: Northing: 5040683.488 Easting: 1769012.566

RECORD: P.O.T.  
 STA. 74+00  
 P.K./WASHER ATOP  
 P.K./WASHER ATOP  
 BOAT SPIKE  
 FD P.K./WASHER  
 6/26/97, MC  
 SET P.K./WASHER  
 10/16/97, MC  
 FD P.K./WASHER  
 REF19  
 4/29/16, JFO  
 SET MAG/WASHER  
 NEWREF19  
 9/6/17, JFO



# O.D.O.T. DISTRICT 2 SURVEY OFFICE

PERSONNEL \_\_\_\_\_

REFERENCE NO. 19

SHEET 19 OF 34

NOTES CANTERBURY

H.C. Rousos

DATE 6/26/97

ROUTE # 53

R.C. BARNHISEL

WEATHER SUN

COUNTY SENECA

P WEAVER

TEMP. +80°

TOWNSHIP SENECA

SECTION 14

T. 1 N. R 14 E

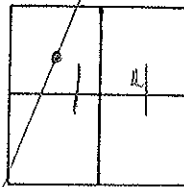
TYPE MONUMENT P.K. + WASHER

ON SURFACE - ~~BELOW~~ SURFACE

LEFT - ~~Q~~ PAV'T. - RIGHT ON Q

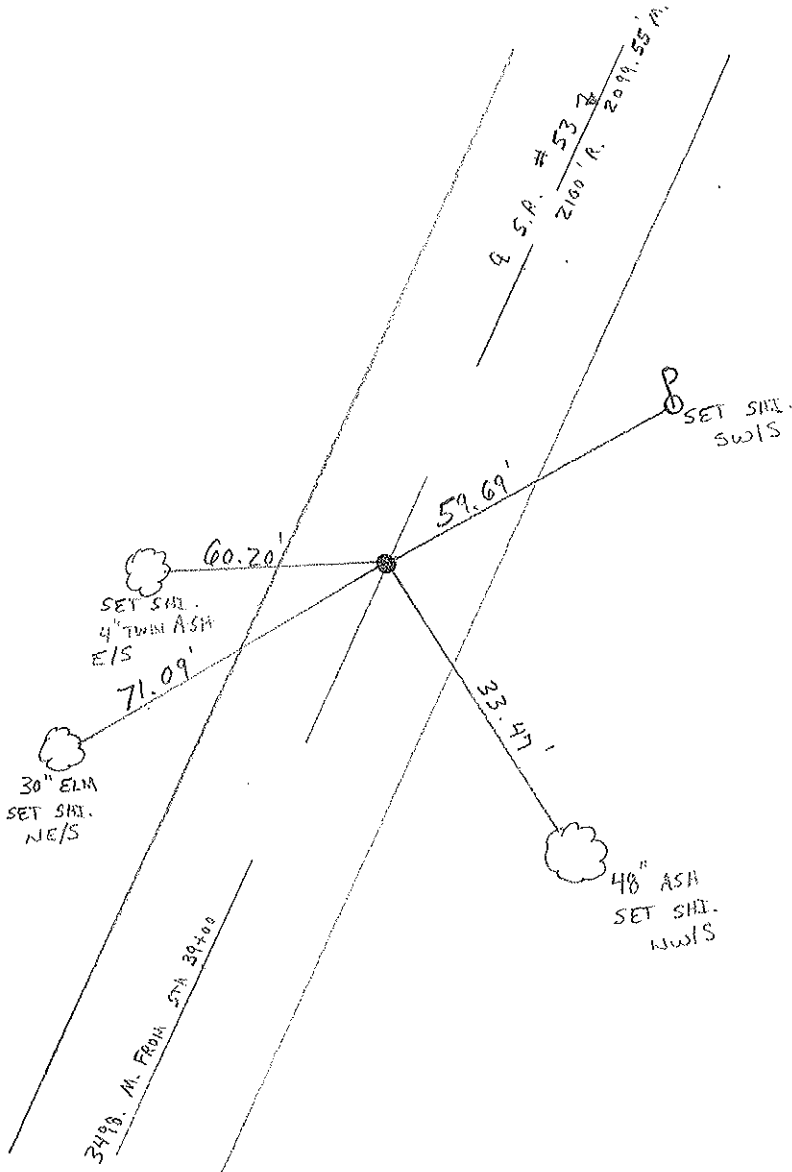
11.0' TO RT EDGE PAVEMENT

S.L.M. G+892.08 SLK



RECORDS: ROJ  
74+00  
P.K. WASHER ATOP  
SAME ATOP BOAT SPIRE

RESET PK/WASHER  
 10/16/97  
 M.R.C.



# O.D.O.T. DISTRICT 2 SURVEY OFFICE

PERSONNEL

REFERENCE NO. 19

SHEET 19 OF     

NOTES CRONIN (DRAW)

DRAWN 11/06/89

H.C. RIPPLE

DATE 12/8/89

ROUTE #53

R.C. BARBOUR WORK

WEATHER SUNNY

COUNTY SENECA

GEYMAN

TEMP. 26°

TOWNSHIP SENECA

SECTION     

T I N R I A E

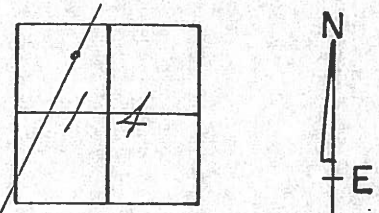
TYPE MONUMENT P.K. + WASHER

ON SURFACE - BELOW SURFACE

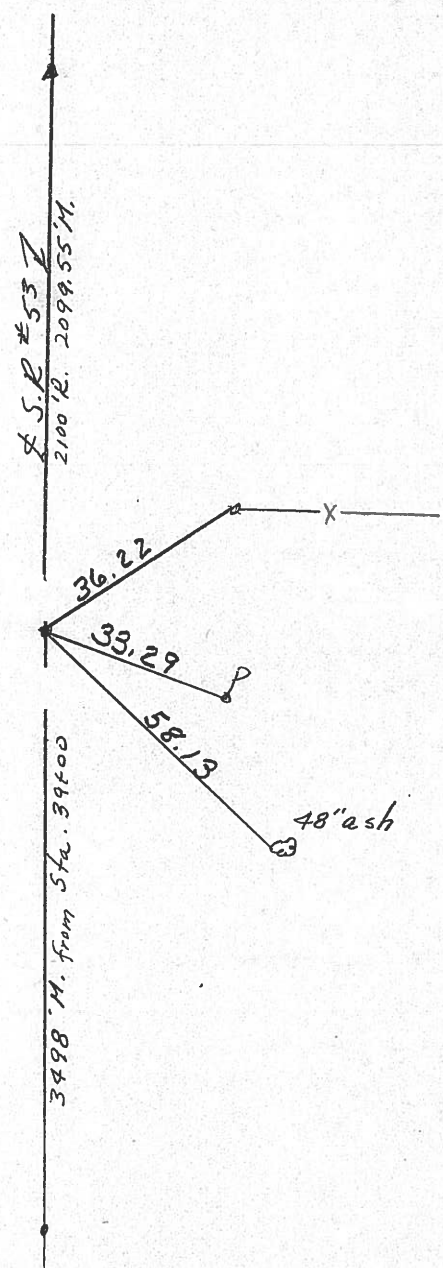
LEFT - ☉ PAV'T. - RIGHT ☉

     TO      EDGE PAVEMENT

S.L.M. 4.2758



P.O.T.  
74+00  
P.K. WASHER TOP  
SAME ATOP BOAT SPIKE



O.D.O.T. DISTRICT 2 SURVEY OFFICE

SHEET

OF

7

County Seneca S.R. 53

Township Seneca

Section 14

T/N, R/E

Personnel Cronin

Ripple

Geyman

Mosser

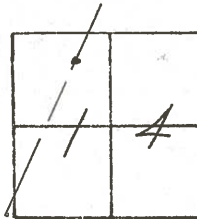
Barbour

#19

Date 8/10/82

Weather overcast

Temp. 65°



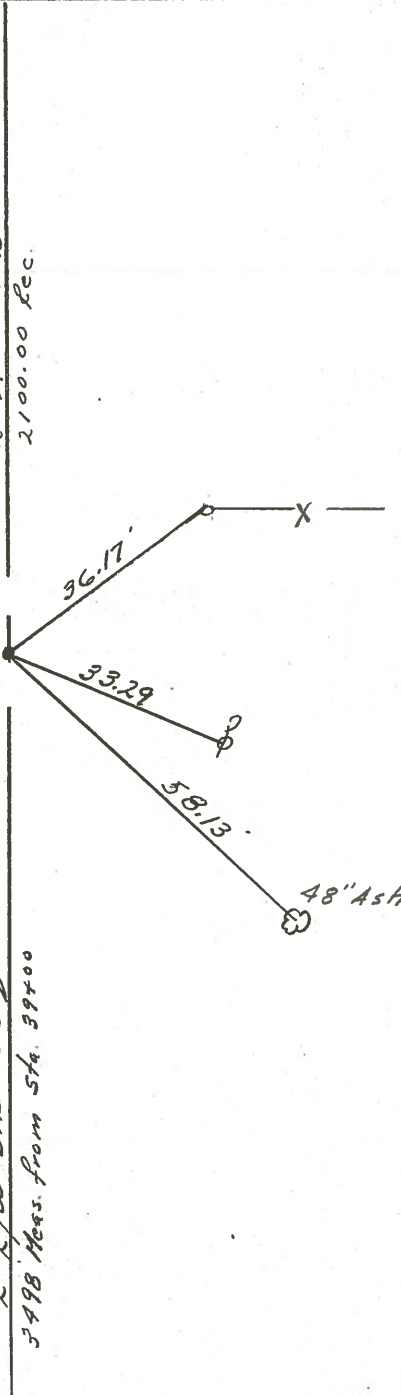
P.O.T

74+00

set P.K. & washer atop post  
spike.

2099.55 Meas  
2100.00 Rec.

R/W S.L. #53  
3498 Meas. from Sta. 39+00



PERSONNEL	TITLE	PERSONNEL	TITLE	COUNTY	Seneca	DATE	12/17/75
Cronin		Schneider		S. R.	#53	WEATHER	overcast
Ripple		Mosser		SEC.	I.C.H. #266 'G'	TEMP.	30°
Geyman		Barbour					

DESCRIPTION Ties for Control Points JOB NO. \_\_\_\_\_

