

O.D.O.T. DISTRICT 2 SURVEY OFFICE (USE ONLY)

PERSONNEL _____ REFERENCE NO. 20 SHEET 23 OF 41

NOTES RHOADES DATE 5/3/16 ROUTE SR 53
 H.C. O'DONNELL WEATHER CLOUDY COUNTY SENECA
 R.C. RHOADES TEMP. 51° TOWNSHIP SENECA
 _____ LEU _____ SECTION 11
 _____ T 1 N R 14 E

TYPE MONUMENT P.K.NAIL

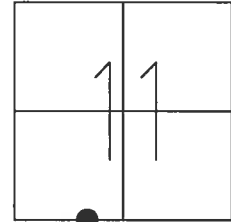
~~ON SURFACE~~ - BELOW 3"

~~LEFT~~ - Q PAV'T - RIGHT 0.2'

9.9' TO RT EDGE PAVEMENT

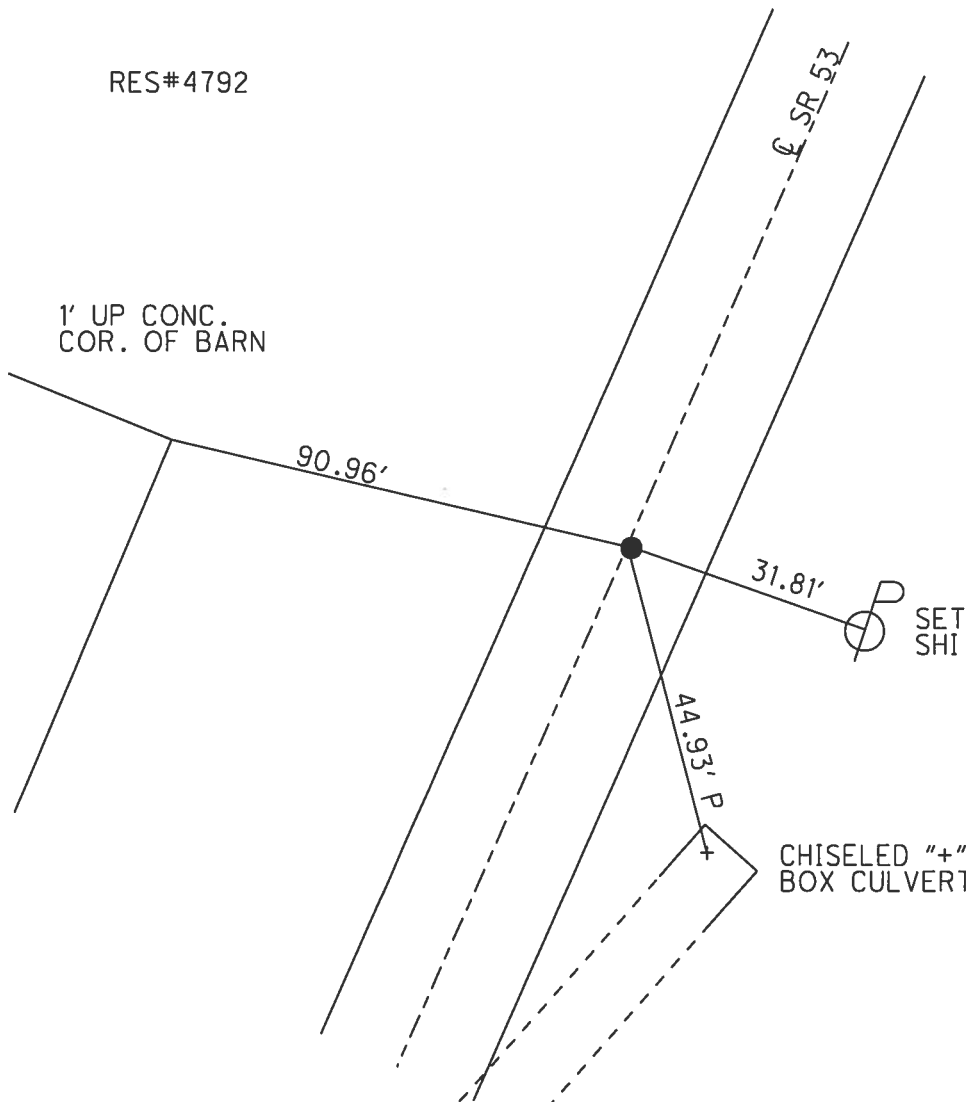
S.L.M. 246+56.81

Grid: Northing: 506060.915 Easting: 1769771.791



RES#4792

1' UP CONC.
COR. OF BARN



RECORD: P.I.
 $\Delta = 00^\circ 28' \text{ LT}$
 STA. 95+00
 P.K./WASHER ATOP
 P.K./WASHER ATOP
 BOAT SPIKE
 FD P.K.NAIL
 6/26/97, MC
 SET P.K./WASHER
 10/16/97, MC
 FD P.K.NAIL
 3" DOWN
 REF20
 5/2/16, JFO
 SET MAG/WASHER
 NEWREF20
 9/6/17, JFO

SET
SHI

CHISELED "+"
BOX CULVERT

O.D.O.T. DISTRICT 2 SURVEY OFFICE

PERSONNEL

REFERENCE NO. 20

SHEET 20 OF 34

NOTES Canterbury

H.C. Rousos

DATE 6-26-97

ROUTE 53

R.C. Baehisel

WEATHER Sunny

COUNTY Seneca

P Weaver

TEMP. + 80° F

TOWNSHIP Seneca

Rousos - DRAWING

SECTION 11

T 1 N 14 E

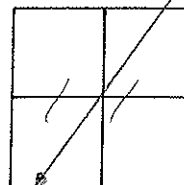
TYPE MONUMENT P.K. WASHER

ON SURFACE - ~~BELOW~~ Surface

LEFT - C. PAV'T. - RIGHT 0.2' RT &

9.9' TO RT. EDGE PAVEMENT

S.L.M. 7+543.90 SLK



RESET P.K. Washer
10/16/97
MRC

$\Delta = 00^{\circ} 28' \text{ Lt. RECA MEAS.}$

P.I. / 95+00

P.K. WASHER 1/2' RT

ATOP P.K. & WASHER ATOP

BOAT SPIKE

SET SH1 IN SIDING
OF BARN; RES. #4792

46.829m
153.64'

SET SH2
IN 6" CMP

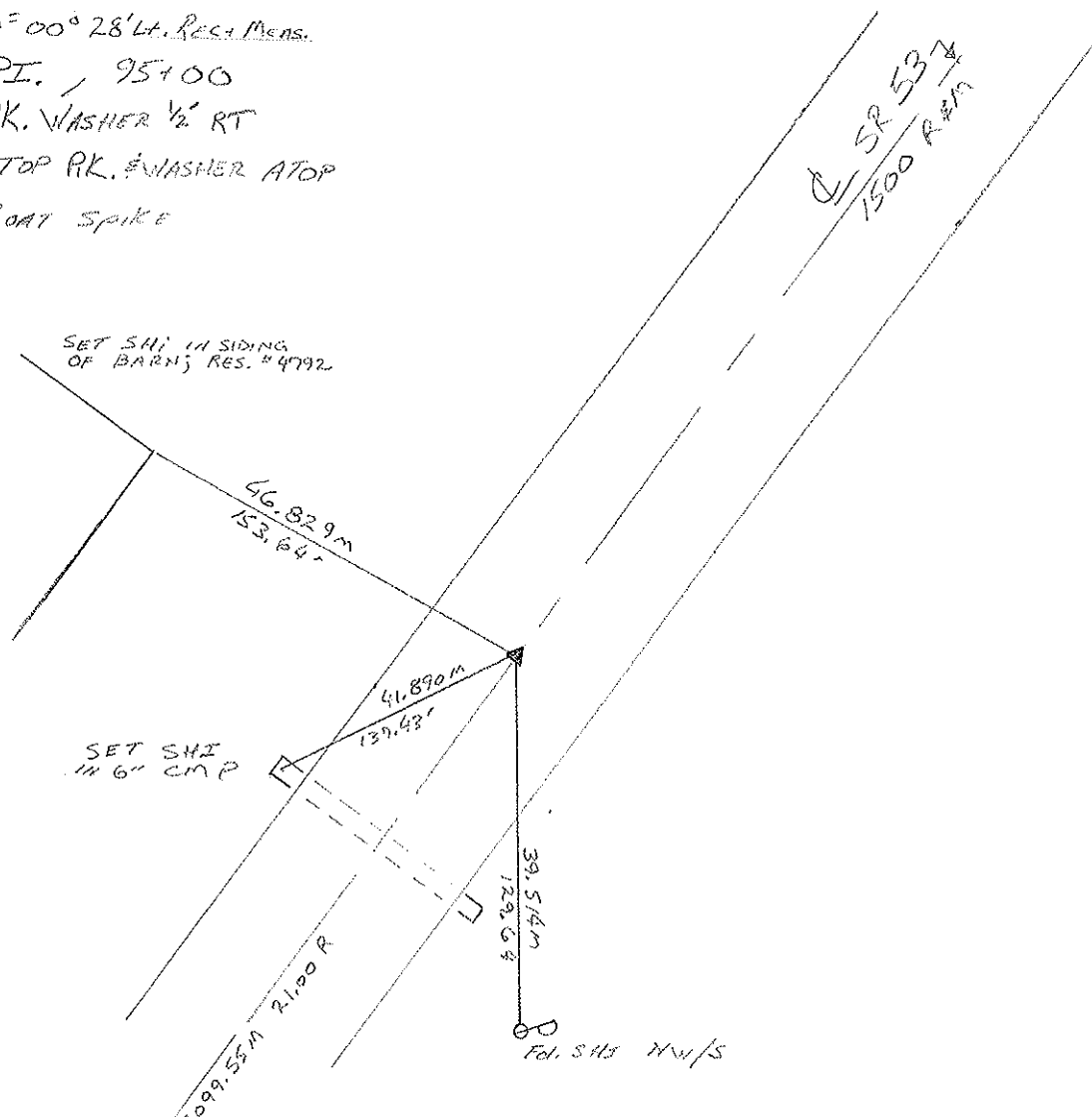
41.890m
137.43'

2099.55m 21100 R

39.514m
129.68'

Fed. SH5 NW/S

SR 53
1500 R&M



O.D.O.T. DISTRICT 2 SURVEY OFFICE

PERSONNEL

REFERENCE NO. 20

SHEET 20 OF

NOTES CRONIN (DRAW)

DRAWN 11/06/89

H.C. RIPPLE

DATE 12/8/89

R.C. BARBOUR WORK

WEATHER SUNNY

GEYMAN

TEMP. 26°

ROUTE # 53

COUNTY SENECA

TOWNSHIP SENECA

SECTION 11

T. 1 N. R. 14 E.

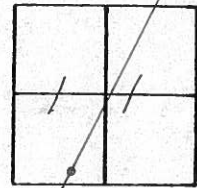
TYPE MONUMENT P.K. Washer

ON SURFACE - BELOW SURFACE

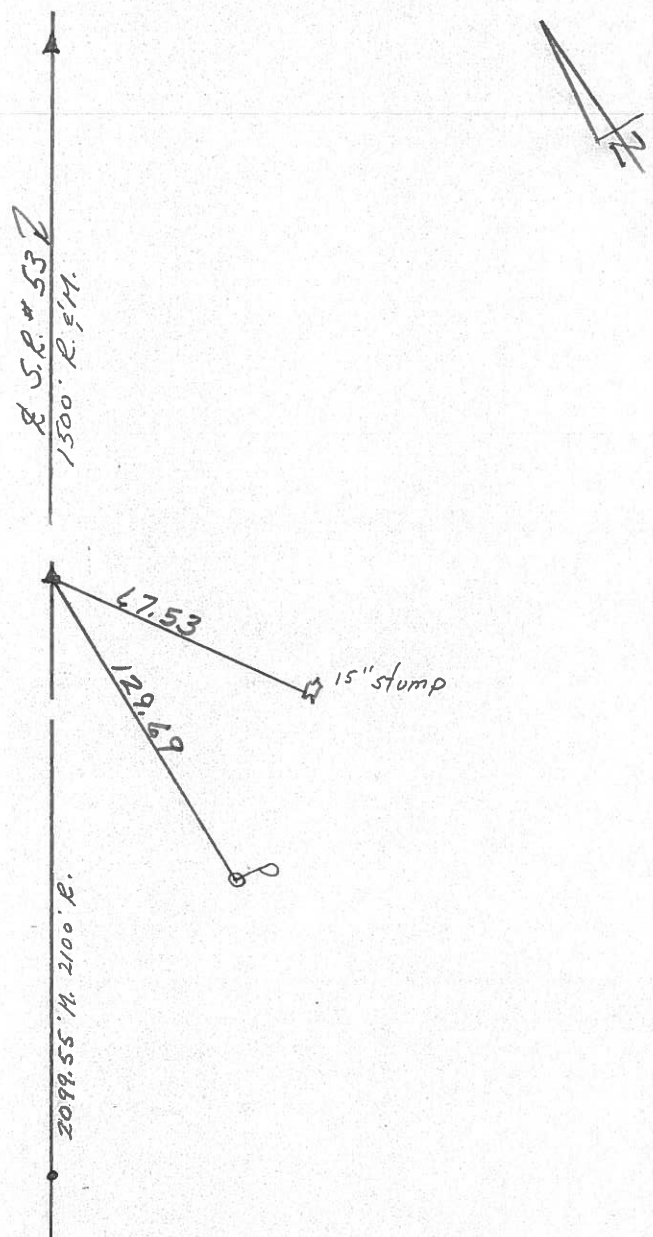
LEFT - ☉ PAV'T. - RIGHT ☉ RT. ☉

 TO EDGE PAVEMENT

S.L.M. 4.6735



A=00°28' Lt. Rec. & Mens.
P.F.
95+00
PK. Washer 1/2' RT.
ATOP P.K. & WASHER ATOP
BOAT SPIKE



O.D.O.T. DISTRICT 2 SURVEY OFFICE

SHEET

OF

5

County Seneca S.R. 53

Date 8/10/82

Township Seneca

Weather overcast

Section 11

Temp. 65°

T1N, R14E

Personnel Cronin

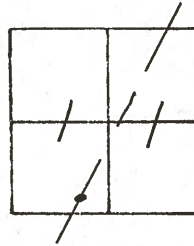
Ripple

Geyman

Mosser

Barbour

#20



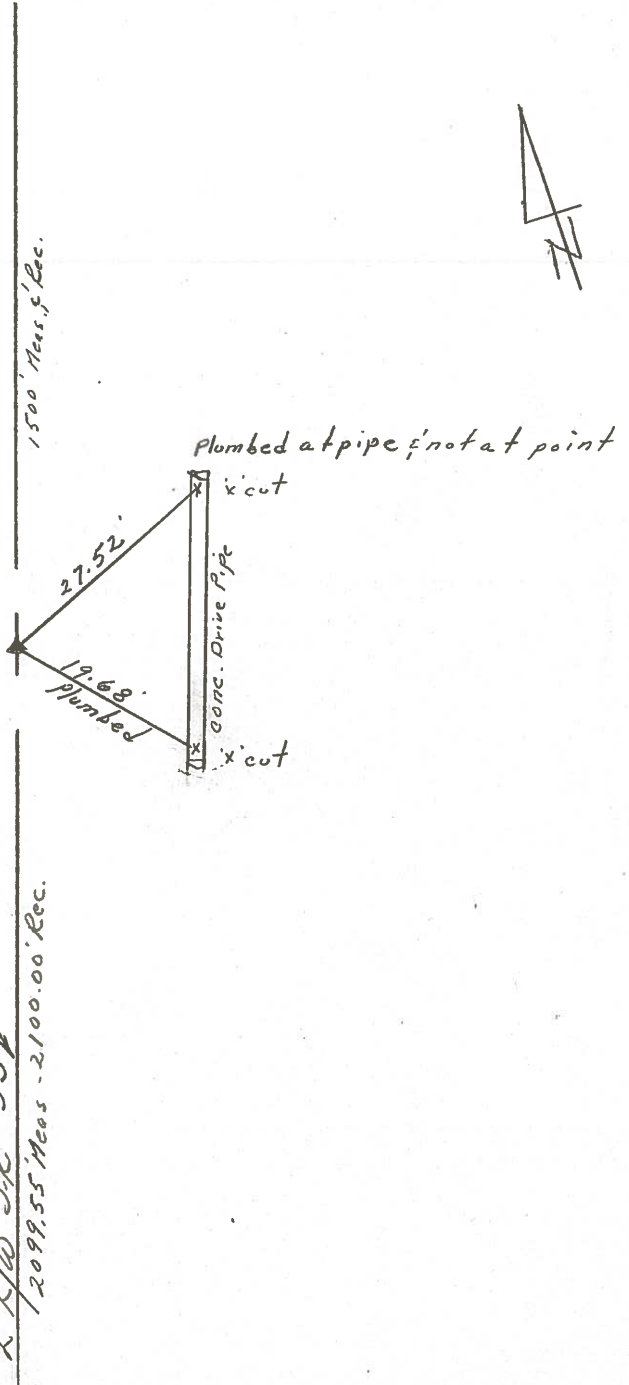
$\Delta = 00^\circ 28' \text{ Lt. Plan \& Meas.}$

P.I.

95700

set P.K. \& washer a top boat

spike -



R/R/W S.R. #537
2099.55' Meas. - 2100.00' Rec.

PERSONNEL	TITLE	PERSONNEL	TITLE
Cronin		Schneider	
Ripple		Mosser	
Geyman		Barbour	

COUNTY Seneca

DATE 12/17/95

S. R. # 53

WEATHER overcast

SEC. I.C.H. #246 'G'

TEMP. 30°

DESCRIPTION Ties for Control Points

JOB NO.

