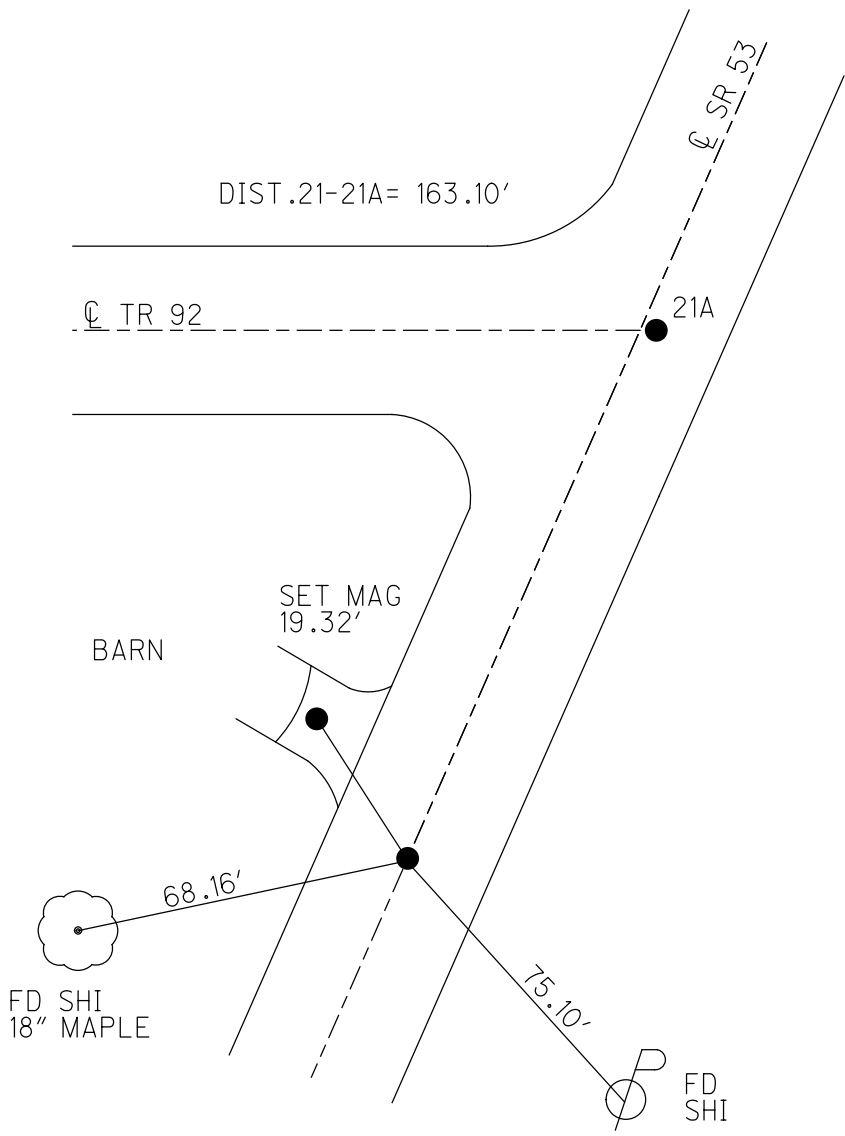
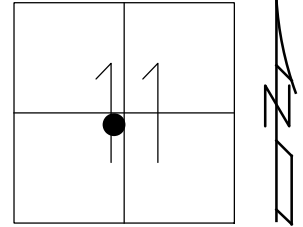


O.D.O.T. DISTRICT 2 SURVEY OFFICE (USE ONLY)

PERSONNEL _____ REFERENCE NO. 21 SHEET 24 OF 47
 NOTES MILLER DATE 12/28/23 ROUTE SR 53
 H.C. RHOADES WEATHER RAIN COUNTY SENECA
 R.C. MILLER TEMP. 46° TOWNSHIP SENECA
 DWG BY RHOADES PID PAVING TRAIN SECTION 11
 T 1 N R 14 E

TYPE MONUMENT MAG/WASHER
 ON SURFACE - ~~BELOW~~ ON
 OFFSET \odot PAVEMENT 1.0' ~~LT~~ : RT
9.6' TO RT EDGE PAVEMENT
 STATION: 261+56.97

HORZ.DATUM: NAD83 2011 GEOID: NAVD88 2018
 GRID: NORTHING: 507467.077 EASTING: 1770294.596



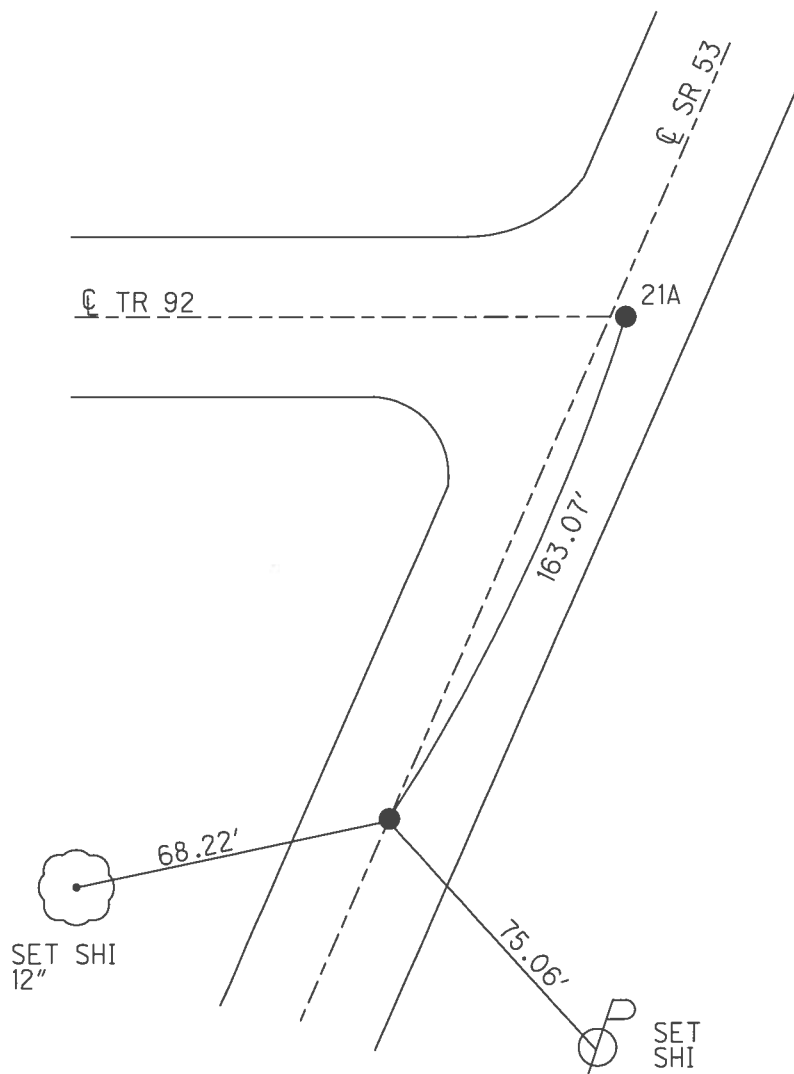
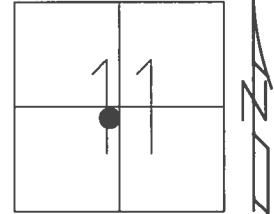
RECORD: P.I.
 STA. 110+00
 $\Delta = 00^\circ 12' RT$
 P.K./WASHER ATOP
 P.K./WASHER ATOP
 BOAT SPIKE
 FD P.K./WASHER
 6/26/97, MC
 SET P.K./WASHER
 10/16/97, MC
 FD P.K./WASHER
 REF21
 5/11/16, JFO
 SET MAG/WASHER
 NEWREF21
 9/6/17, JFO
 FD MAG/WASHER
 REF21
 9/15/23,
 12/28/23, JMR

O.D.O.T. DISTRICT 2 SURVEY OFFICE (USE ONLY)

PERSONNEL	REFERENCE NO.	21	SHEET	24	OF	41
NOTES	RHOADES	DATE	4/21/17	ROUTE	SR 53	
H.C.	O'DONNELL	WEATHER	CLOUDY	COUNTY	SENECA	
R.C.	RHOADES	TEMP.	52°	TOWNSHIP	SENECA	
				SECTION	11	
				T	1	N
				R	14	E

TYPE MONUMENT P.K./WASHER
 ON SURFACE - ~~BELOW~~ ON
~~LEFT~~ - CL PAV'T - RIGHT 1.0'
9.6' TO RT EDGE PAVEMENT
 S.L.M. 261+56.97

Grid: Northing: 507467.077 Easting: 1770294.596



RECORD: P.I.
 $\Delta = 00^\circ 12' RT$
 STA. 110+00
 P.K./WASHER ATOP
 P.K./WASHER ATOP
 BOAT SPIKE
 FD P.K./WASHER
 6/26/97, MC
 SET P.K./WASHER
 10/16/97, MC
 FD P.K./WASHER
 REF21
 5/11/16, JFO
 SET MAG/WASHER
 NEWREF21
 9/6/17, JFO

O.D.O.T. DISTRICT 2 SURVEY OFFICE

PERSONNEL

REFERENCE NO. 21

SHEET 21 OF 34

NOTES CANTERBURY

H.C. ROUSOS

DATE 6/26/99

ROUTE 53

R.C. BARBISAL

WEATHER SUNNY

COUNTY SENECA

WEAVER

TEMP. +80°

TOWNSHIP SENECA

ROUSOS - DRAWING

SECTION 11

T. 1 N. R. 14 E.

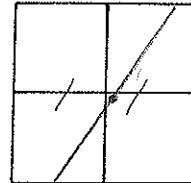
TYPE MONUMENT P.K. WASHER

ON SURFACE - BELOW SURFACE

LEFT - 0 PAV'T. - RIGHT 1.0 RT

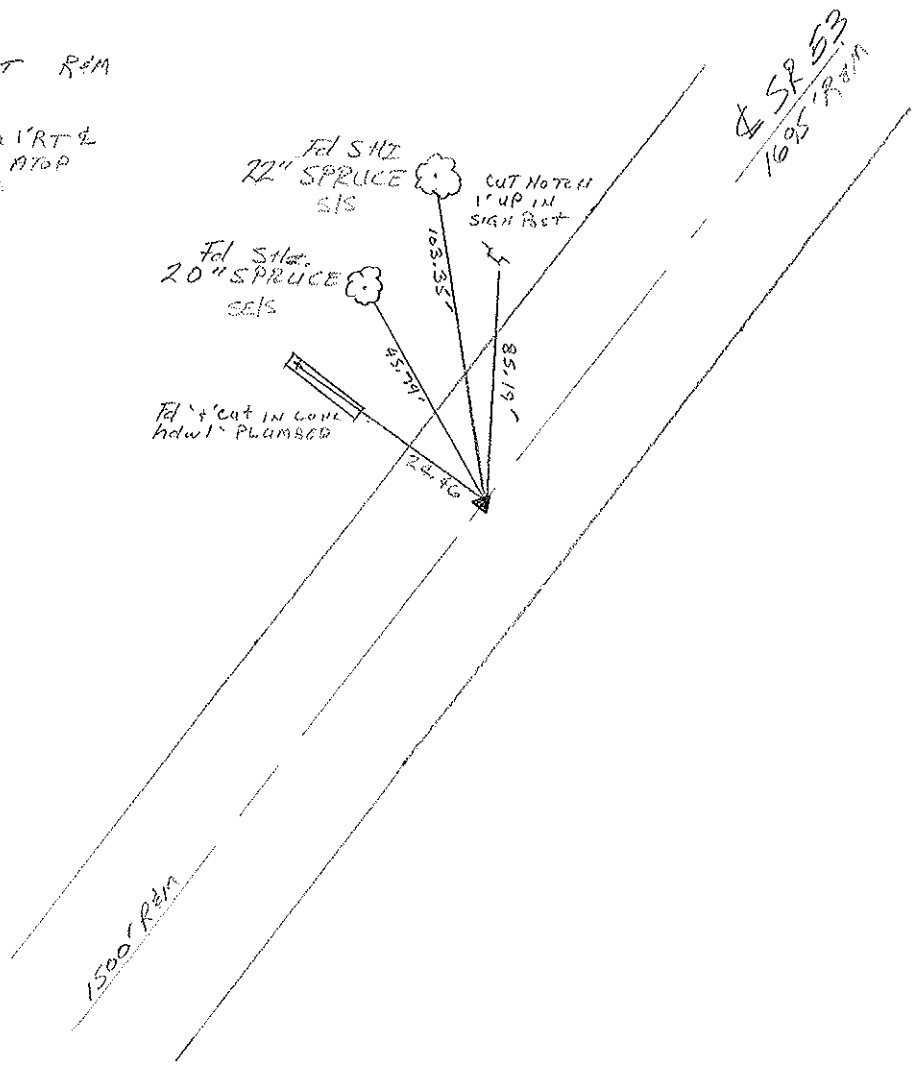
9.6' TO RT EDGE PAVEMENT

S.L.M. 8+002.13 SLK



RESET P.K. WASHER
 10/16/99
 M.R.C.

$\Delta = 00^{\circ} 12' \text{ LT}$ R&M
 PZ
 110100
 P.K. WASHER 1' RT &
 ATOP SAME ATOP
 BOAT SPIKE



Fol 5 1/2
 22" SPRUCE
 SETS
 CUT NOTED
 1' UP IN
 SIGN POST
 103.55'
 85.19'
 Fol 5' cut in conc
 hdw/ PLUMBER
 22.16'
 16.54'

Δ SP 53
 1695' R&M

1500' R&M

O.D.O.T. DISTRICT 2 SURVEY OFFICE

PERSONNEL

REFERENCE NO. 21

SHEET 21 OF

NOTES Cronin (Draw)

DRAWN 11/06/89

H.C. RIPPLE

DATE 12/8/89

R.C. BARBOUR WORK

WEATHER SUNNY

GEYMAN

TEMP. 26°

ROUTE #53

COUNTY SENECA

TOWNSHIP SENECA

SECTION 11

T 1 N R 14 E

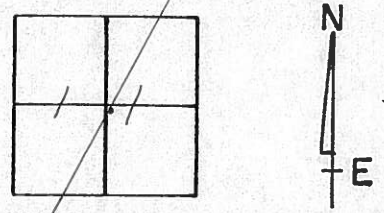
TYPE MONUMENT PK - Washer

ON SURFACE - BELOW Surface

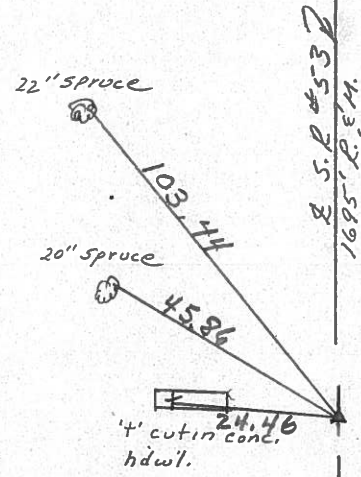
LEFT - ☉ PAV'T. - RIGHT 1' RT. &

 TO EDGE PAVEMENT

S.L.M. 49576



Δ = 00°12' Lt. R. & M.
P.I.
110+00
PK. Washer 1' RT &
ATOP SAME ATOP BOAT
SPIKE



O.D.O.T. DISTRICT 2 SURVEY OFFICE

SHEET

OF

County Seneca S. R. 53

Date 8/10/82

Township Seneca

Weather overcast

Section 11

Temp. 65°

T1N, R14E

Personnel Cronin

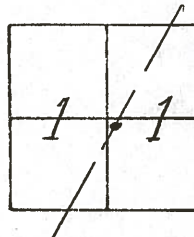
Ripple

Geyman

Mosser

Barbour

#21



$\Delta = 00^{\circ}12'$ Lt. Plan & Meas.

P.I.

110+00

set P.K. & washer a top boat spike

18" spruce

17" spruce

103.52'

45.96'

1695' Meas. & Rec.

97.81'

E. R/W S.R. # 53

1500' Meas. & Rec.



X

PERSONNEL	TITLE	PERSONNEL	TITLE
Cronin		Schneider	
Ripple		Mosser	
Gyman		Barbour	

COUNTY Seneca

DATE 12/17/75

S. R. # 53

WEATHER Overcast

SEC. I.C.H. #266 'G'

TEMP. 30°

DESCRIPTION Ties for Control Points

JOB NO.

