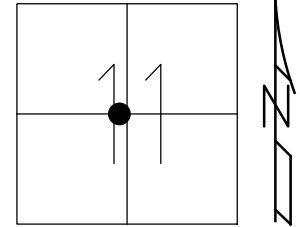


O.D.O.T. DISTRICT 2 SURVEY OFFICE (USE ONLY)

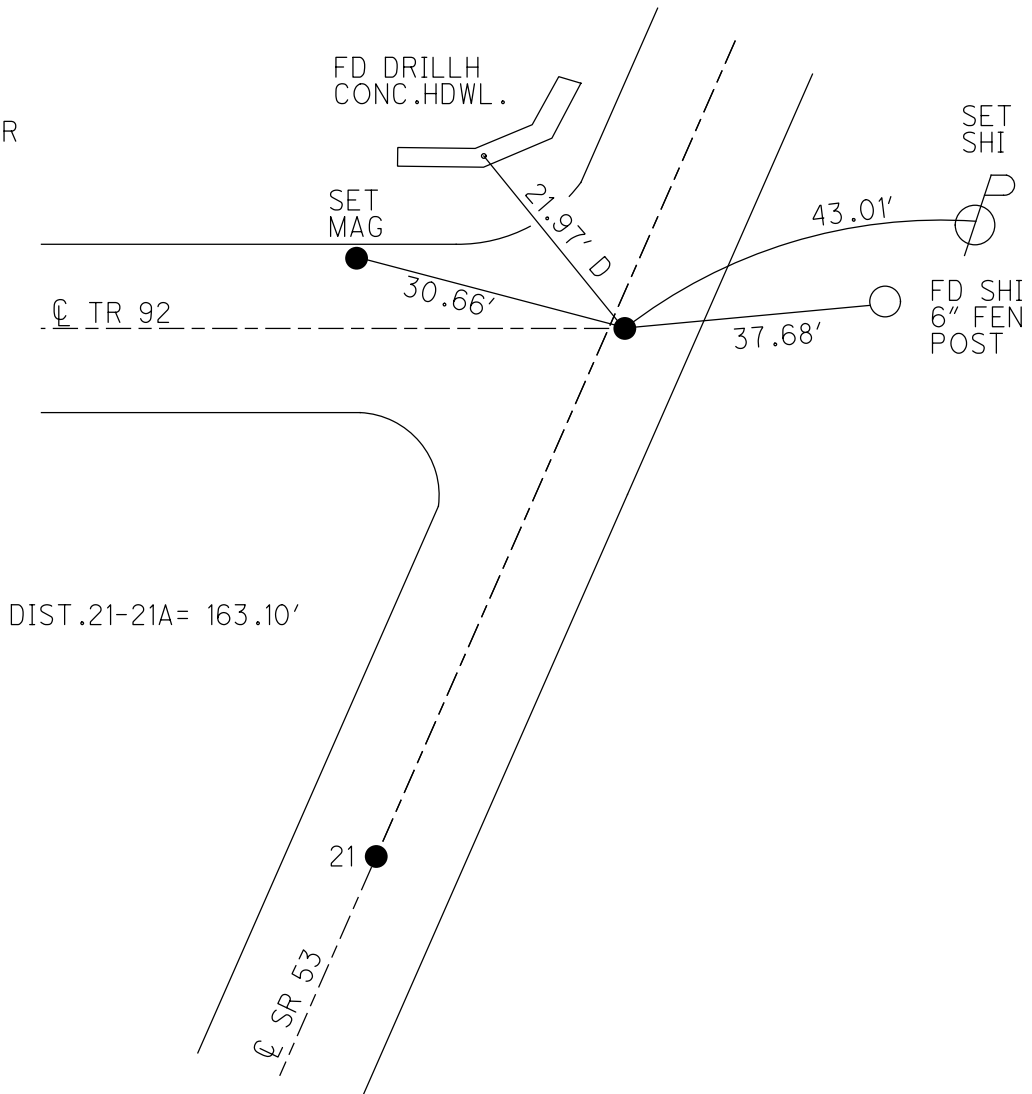
PERSONNEL \_\_\_\_\_ REFERENCE NO. 21 A SHEET 25 OF 47  
 NOTES MILLER DATE 12/28/23 ROUTE SR 53  
 H.C. RHOADES WEATHER RAIN COUNTY SENECA  
 R.C. MILLER TEMP. 46° TOWNSHIP SENECA  
 DWG BY RHOADES PID PAVING TRAIN SECTION 11  
 T 1 N R 14 E

TYPE MONUMENT MAG/WASHER  
 ON SURFACE - ~~BELOW~~ ON \_\_\_\_\_  
 OFFSET  $\odot$  PAVEMENT 1.0' ~~LT~~ : RT  
9.6' TO RT EDGE PAVEMENT  
 STATION: 263+20.04



HORIZ.DATUM: NAD83 2011 GEOID: NAVD88 2018  
 GRID: NORTHING: 507620.120 EASTING: 1770350.820

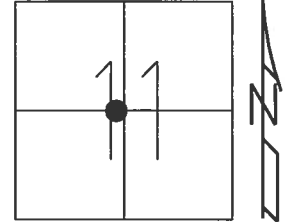
RECORD:  
 FD SM.P.K.NAIL  
 REFA21  
 4/29/16, JFO  
 SET MAG/WASHER  
 NEWREFA21  
 9/6/17, JFO  
 FD MAG/WASHER  
 REF21A  
 9/15/23,  
 12/28/23, JMR



O.D.O.T. DISTRICT 2 SURVEY OFFICE (USE ONLY)

PERSONNEL \_\_\_\_\_ REFERENCE NO. 21 A SHEET 25 OF 41  
 NOTES RHOADES DATE 4/21/17 ROUTE SR 53  
 H.C. O'DONNELL WEATHER CLOUDY COUNTY SENECA  
 R.C. RHOADES TEMP. 52° TOWNSHIP SENECA  
 \_\_\_\_\_ SECTION 11  
 \_\_\_\_\_ T 1 N R 14 E

TYPE MONUMENT SM.P.K.NAIL  
 ON SURFACE - ~~BELOW~~ ON \_\_\_\_\_  
~~LEFT~~ - ☉ PAV'T - RIGHT 1.0'  
9.6' TO RT EDGE PAVEMENT  
 S.L.M. 263+20.04  
 Grid: Northing: 507620.120 Easting: 1770350.820



RECORD:  
 FD SM.P.K.NAIL  
 REFA21  
 4/29/16, JFO  
 SET MAG/WASHER  
 NEWREFA21  
 9/6/17, JFO

