

O.D.O.T. DISTRICT 2 SURVEY OFFICE (USE ONLY)

PERSONNEL

REFERENCE NO. 22

SHEET 26 OF 47

NOTES MILLER

DATE 12/28/23

ROUTE SR 53

H.C. RHOADES

WEATHER RAIN

COUNTY SENECA

R.C. MILLER

TEMP. 46°

TOWNSHIP SENECA

DWG BY RHOADES PID PAVING TRAIN

SECTION 11

T 1 N R 14 E

TYPE MONUMENT MAG/WASHER

ON SURFACE - ~~BELOW~~ ON

OFFSET C PAVEMENT 0.6' ~~LT~~ : RT

9.9' TO RT EDGE PAVEMENT

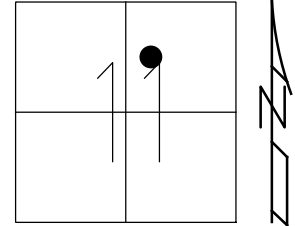
STATION: 278+51.94

HORZ. DATUM: NAD83 2011

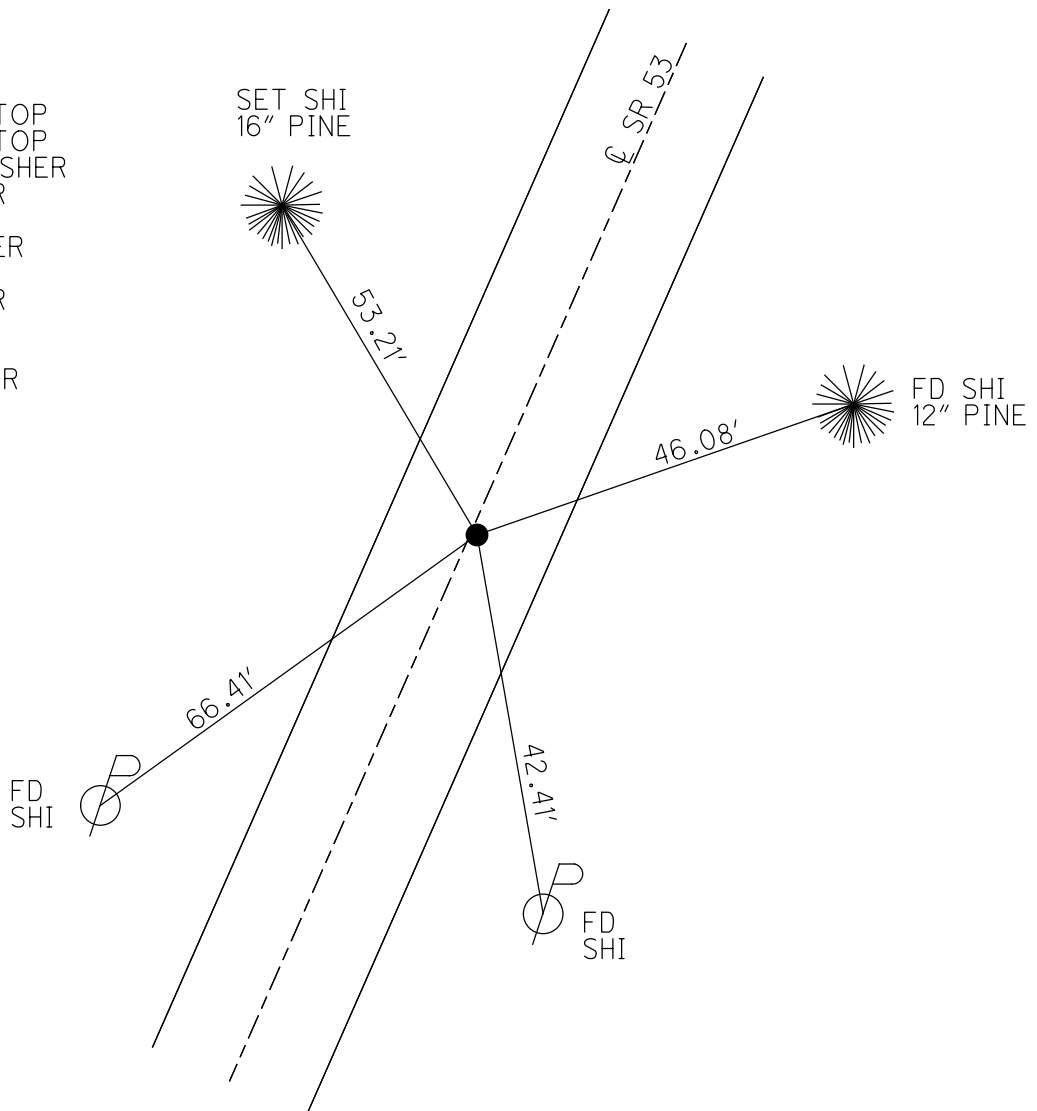
GEOID: NAVD88 2018

GRID: NORTHING: 509057.845

EASTING: 1770879.750



RECORD: P.I.
 STA. 126+95
 $\Delta = 00^{\circ}23' RT$
 P.K./WASHER ATOP
 P.K./WASHER ATOP
 BOAT SPIKE/WASHER
 FD P.K./WASHER
 6/26/97, MC
 SET P.K./WASHER
 10/16/97, MC
 FD P.K./WASHER
 REF22
 4/29/16, JFO
 SET MAG/WASHER
 NEWREF22
 9/7/17, JFO
 FD MAG/WASHER
 REF22
 9/15/23,
 12/28/23, JMR

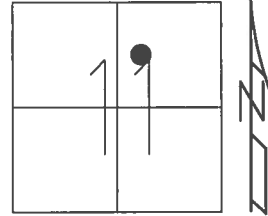


O.D.O.T. DISTRICT 2 SURVEY OFFICE (USE ONLY)

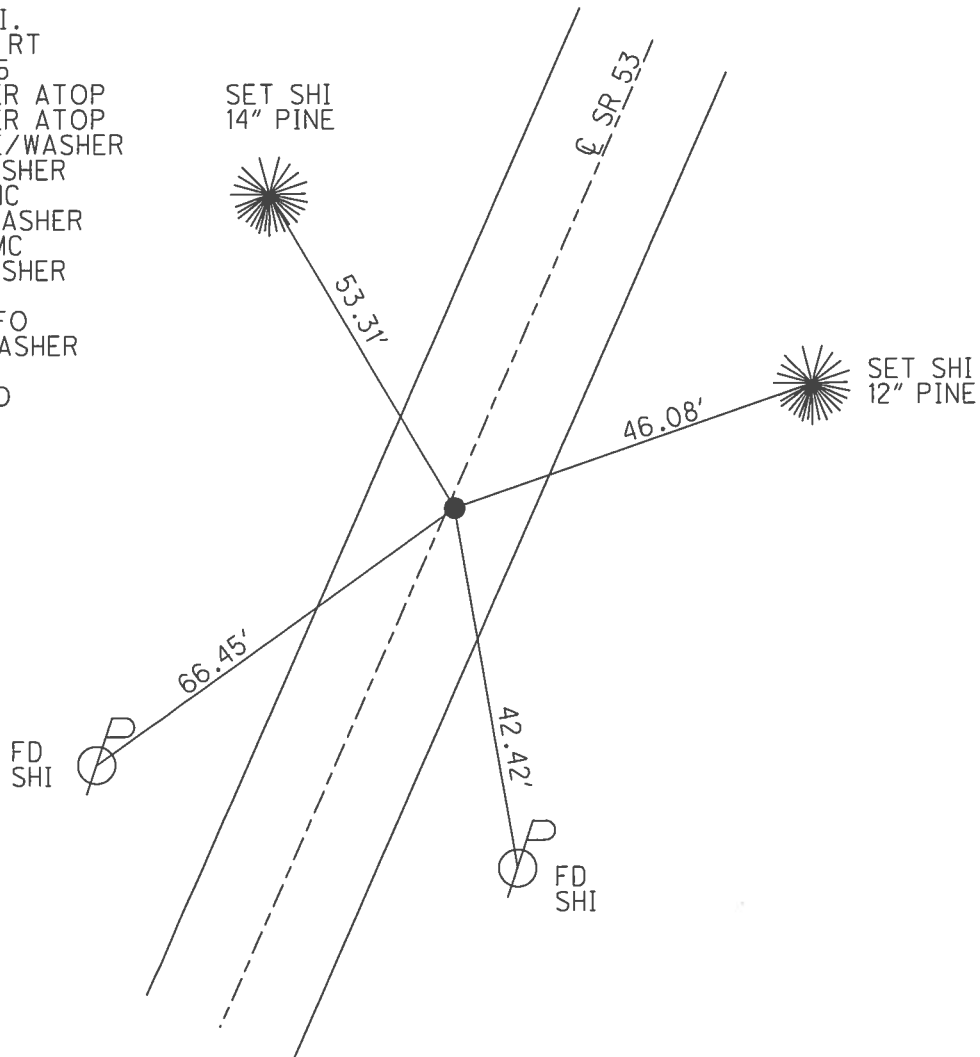
PERSONNEL _____ REFERENCE NO. 22 SHEET 26 OF 41

NOTES RHOADES DATE 4/21/17 ROUTE SR 53
 H.C. O'DONNELL WEATHER CLOUDY COUNTY SENECA
 R.C. RHOADES TEMP. 52° TOWNSHIP SENECA
 _____ SECTION 11
 _____ T 1 N R 14 E

TYPE MONUMENT P.K./WASHER
 ON SURFACE - ~~BELOW~~ ON
~~LEFT~~ - CL PAV'T - RIGHT 0.6'
9.9' TO RT EDGE PAVEMENT
 S.L.M. 278+51.94
 Grid: Northing: 509057.845 Easting: 1770879.750



RECORD: P.I.
 $\Delta = 00^{\circ}23' RT$
 STA. 126+95
 P.K./WASHER ATOP
 P.K./WASHER ATOP
 BOAT SPIKE/WASHER
 FD P.K./WASHER
 6/26/97, MC
 SET P.K./WASHER
 10/16/97, MC
 FD P.K./WASHER
 REF22
 4/29/16, JFO
 SET MAG/WASHER
 NEWREF22
 9/7/17, JFO



O.D.O.T. DISTRICT 2 SURVEY OFFICE

PERSONNEL

REFERENCE NO. 22

SHEET 22 OF 34

NOTES CANTERBURY

H.C. Rousos

R.C. Barnhisel

W/FAVER

ROUSOS - DRAWING

DATE 6/26/99

WEATHER SUNNY

TEMP. +80°

ROUTE 53

COUNTY SENECA

TOWNSHIP SENECA

SECTION 11

T. 1 N. R 19 E

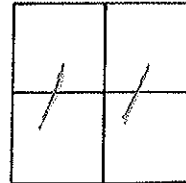
TYPE MONUMENT PK/WASHER

ON SURFACE - BELOW SURFACE

LEFT-¢ PAV'T. - RIGHT 0.6' RT

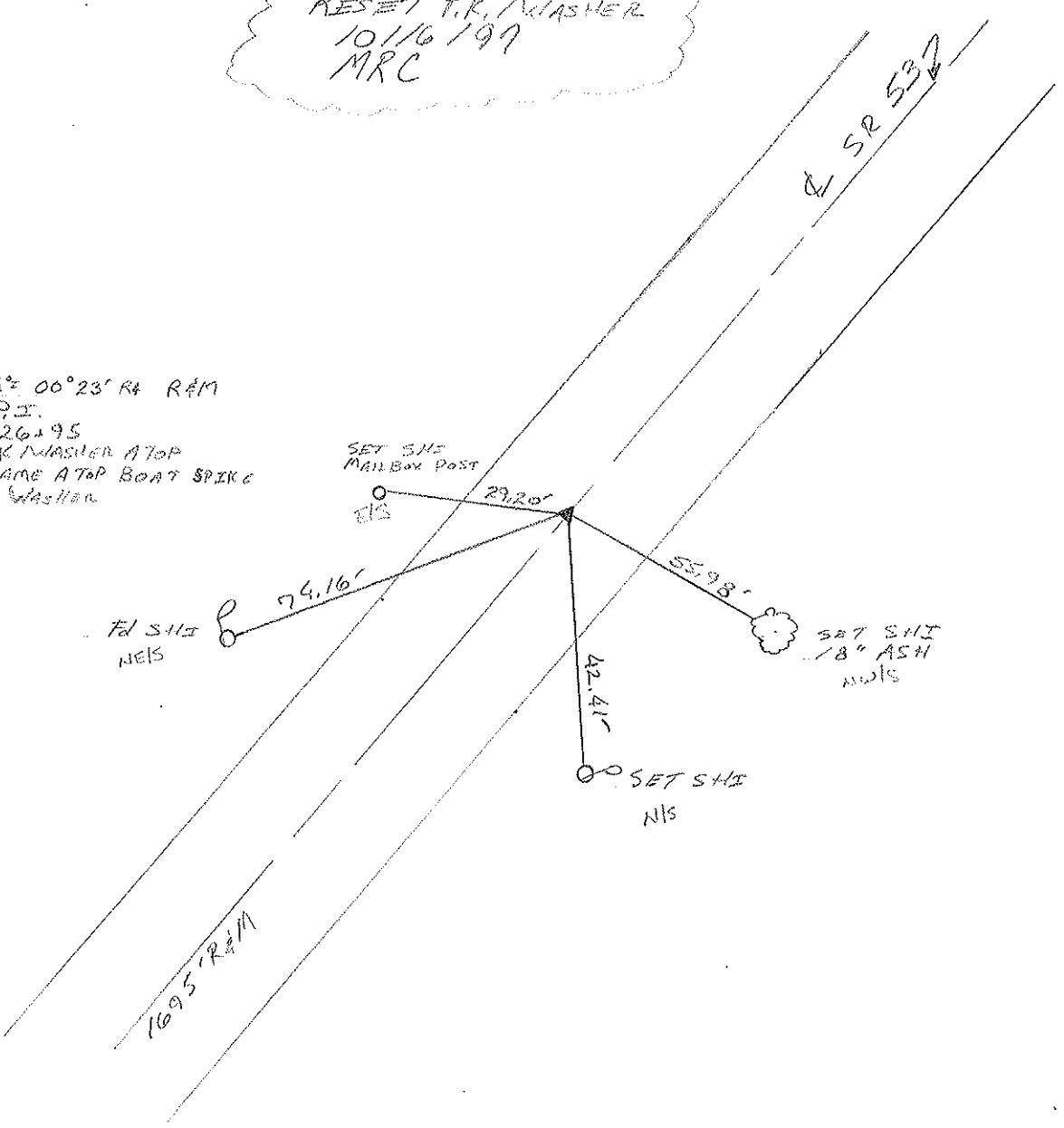
9.9 TO RT EDGE PAVEMENT

S.L.M. 8+520.12 SLK



RESET P.K./WASHER
 10/16/99
 MRC

$\Delta = 00^{\circ}23' R4$ REM
 P.I.
 126+95
 PK WASHER ATOP
 SAME ATOP BOAT SPIKE
 & WASHER



O.D.O.T. DISTRICT 2 SURVEY OFFICE

PERSONNEL

NOTES CRONIN (DRAW)
 H.C. RIPPLE
 R.C. BARBOUR WORK
GEYMAN

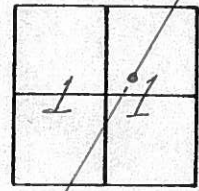
REFERENCE NO. 22

DRAWN 11/08/89
 DATE 12/18/89
 WEATHER SUNNY
 TEMP. 27°

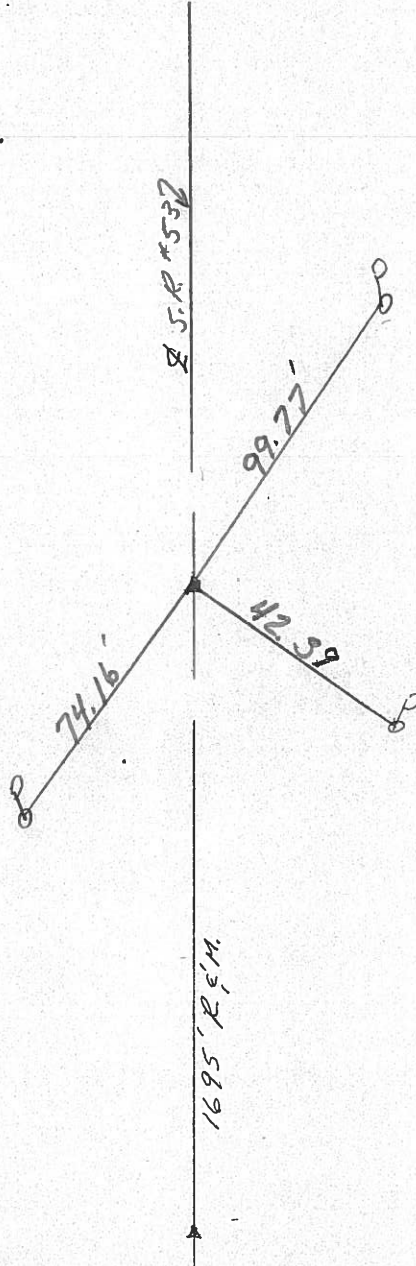
SHEET 22 OF

ROUTE #53
 COUNTY SENECA
 TOWNSHIP SENECA
 SECTION 11
T 1 N R 14 E

TYPE MONUMENT PK Washer
 ON SURFACE - BELOW SURFACE
 LEFT - <math>\frac{1}{2}</math> RT. - RIGHT $\frac{1}{2}$ RT. &
 TO EDGE PAVEMENT
 S.L.M. 5.2786



A=00°23' RT. R. <math>\frac{1}{2}</math> M.
P.I.
126+95
PK Washer ATOP
SAME ATOP BOAT SPIKE
<math>\frac{1}{2}</math> WASHER



①

County Seneca S.R. 53

Township Seneca

Section 11

T1N, R14E

Personnel Cronin

Ripple

Geyman

Mosser

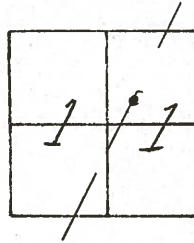
Barbour

#22

Date 8/10/82

Weather sunny

Temp. 65°



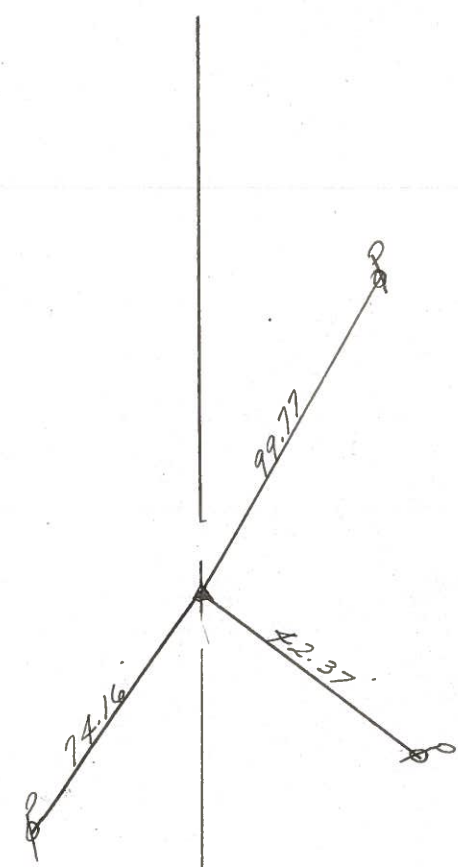
1 = 00° 23' Rt. Plan. & Meas

126 + 95

P.I

set P.K. & washer atop boat

spike & washer - .8 ft. to limit.



2 R/W S.R. # 53
1695' Meas. & Rec.

PERSONNEL	TITLE	PERSONNEL	TITLE
Cronin		Schneider	
Ripple		Masser	
Geyman		Barboor	

COUNTY Seneca

DATE 12/17/75

S. R. # 53

WEATHER Overcast

SEC. I.C.H. # 266 'G'

TEMP. 30°

DESCRIPTION Ties for Control Points

JOB NO.

