

O.D.O.T. DISTRICT 2 SURVEY OFFICE (USE ONLY)

PERSONNEL _____ REFERENCE NO. 20 SHEET 23 OF 41

NOTES RHOADES DATE 5/3/16 ROUTE SR 53
 H.C. O'DONNELL WEATHER CLOUDY COUNTY SENECA
 R.C. RHOADES TEMP. 51° TOWNSHIP SENECA
 _____ LEU _____ SECTION 11
 _____ T 1 N R 14 E

TYPE MONUMENT P.K.NAIL

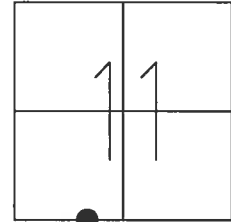
~~ON SURFACE~~ - BELOW 3"

~~LEFT~~ - Q PAV'T - RIGHT 0.2'

9.9' TO RT EDGE PAVEMENT

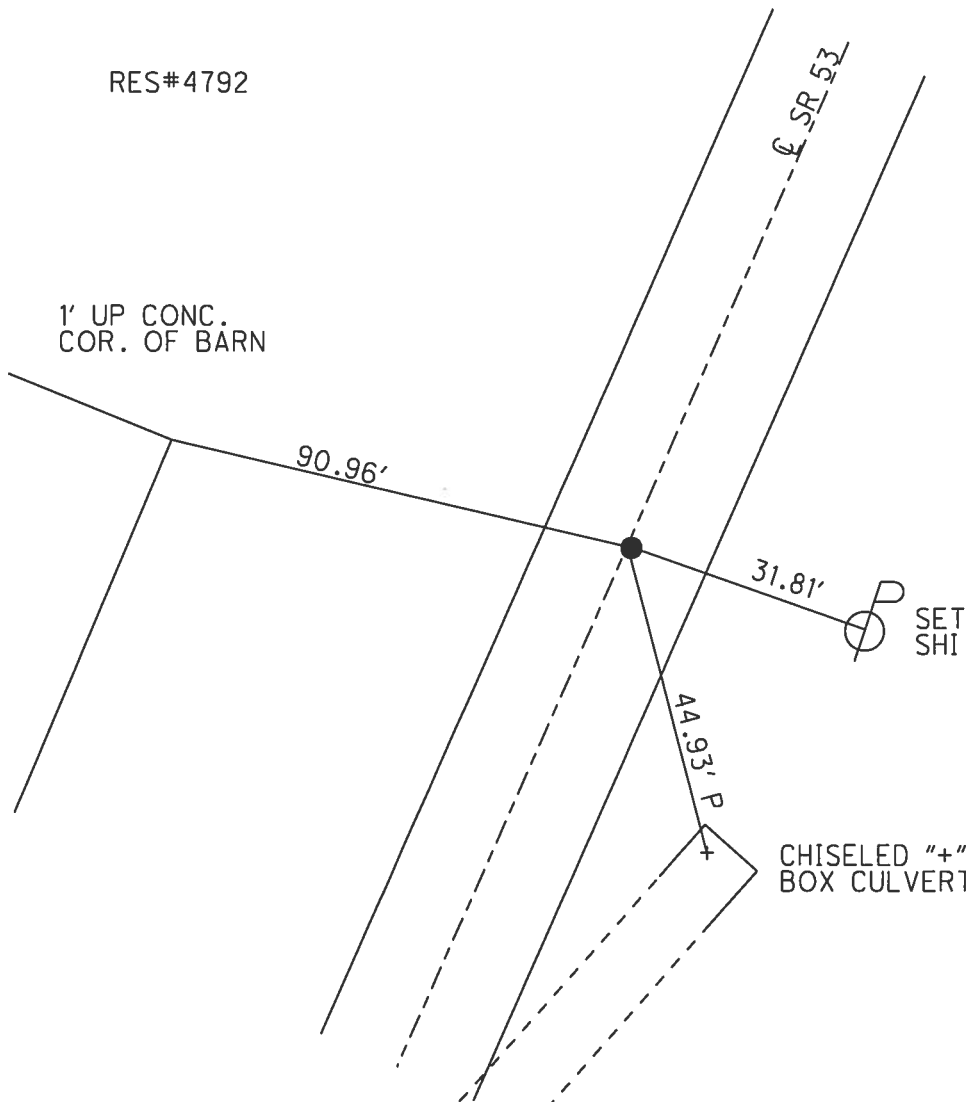
S.L.M. 246+56.81

Grid: Northing: 506060.915 Easting: 1769771.791



RES#4792

1' UP CONC.
COR. OF BARN



RECORD: P.I.
 $\Delta = 00^\circ 28' \text{ LT}$
 STA. 95+00
 P.K./WASHER ATOP
 P.K./WASHER ATOP
 BOAT SPIKE
 FD P.K.NAIL
 6/26/97, MC
 SET P.K./WASHER
 10/16/97, MC
 FD P.K.NAIL
 3" DOWN
 REF20
 5/2/16, JFO
 SET MAG/WASHER
 NEWREF20
 9/6/17, JFO

CHISELED "+"
BOX CULVERT

O.D.O.T. DISTRICT 2 SURVEY OFFICE

PERSONNEL

REFERENCE NO. 23

SHEET 23 OF 34

NOTES Canterbury

H.C. Rousos

DATE 6/26/97

ROUTE 53

R.C. Barnhisel

WEATHER Sunny

COUNTY SENECA

W WRAVER

TEMP. 82°

TOWNSHIP SENECA

ROUSOS - DRAWING

SECTION 11

T. 1 N. R. 19 E.

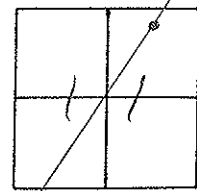
TYPE MONUMENT P.K. WASHER

ON SURFACE - ~~BELOW~~ SURFACE

LEFT - ~~C~~ PAV'T. - RIGHT 1.0' RT &

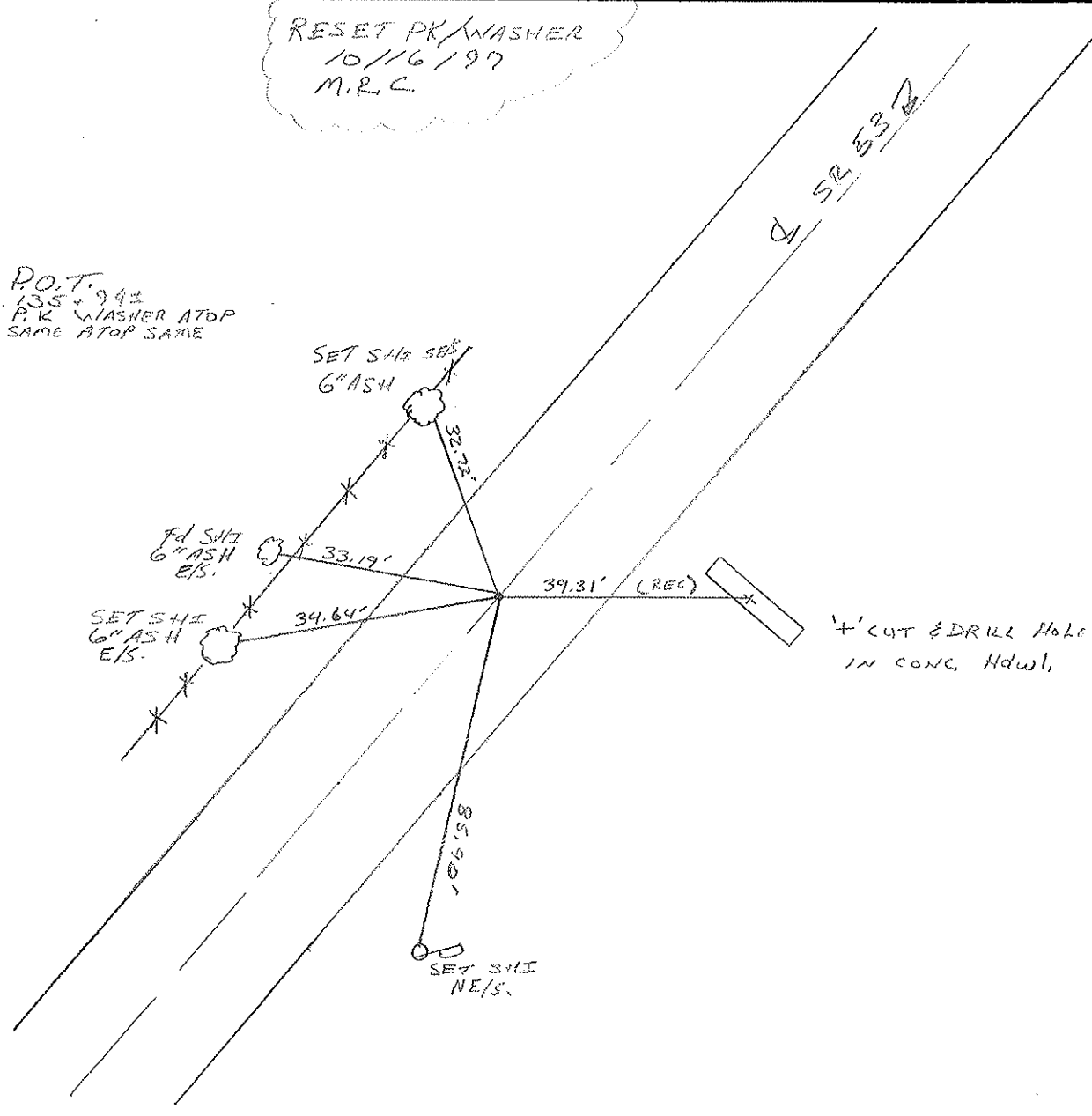
9.1' TO RT EDGE PAVEMENT

S.L.M. 8+797.56 SLK



RESET PK/WASHER
 10/16/97
 M.R.C.

P.O.T.
 135+94±
 P.K. WASHER ATOP
 SAME ATOP SAME



4' CUT & DRILL HOLE
 IN CONC. HDWL.

O.D.O.T. DISTRICT 2 SURVEY OFFICE

PERSONNEL

NOTES CRONIN (Draw)

H.C. RIPPLE

R.C. BARBOUR (work)

GEYMAN

REFERENCE NO. 23

DRAWN 11/08/89

DATE 12/8/89

WEATHER SUNNY

TEMP. 27°

SHEET 23 OF

ROUTE #53

COUNTY SENECA

TOWNSHIP SENECA

SECTION 11

T 1 N R 14 E

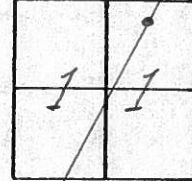
TYPE MONUMENT P.K. WASHER

ON SURFACE - BELOW SURFACE

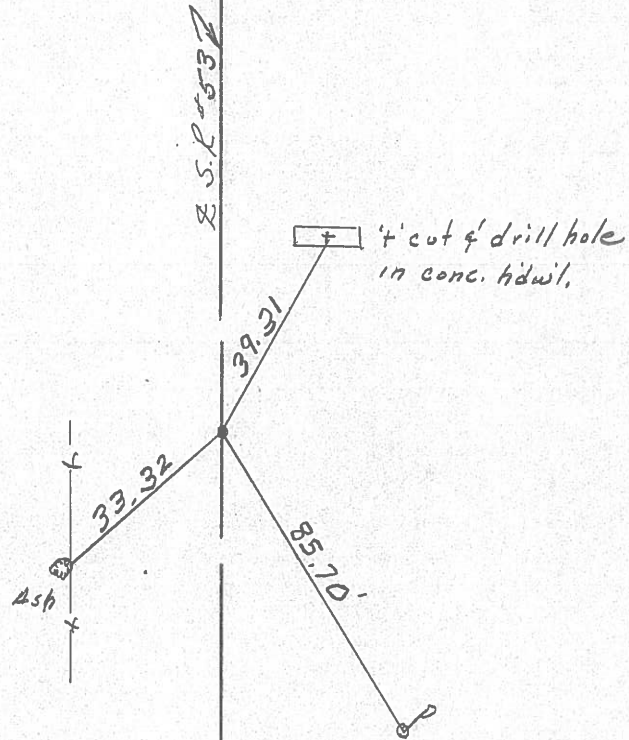
LEFT - & PAV'T. - RIGHT 1' RT. &

 TO EDGE PAVEMENT

S.L.M.



P.O.T.
135494 ±
P.K. WASHER ATOP
SAME ATOP SAME



County Seneca S.R. 53

Date 8/10/82

Township Seneca

Weather sunny

Section 11

Temp. 65°

T1N, R14E

Personnel Cronin

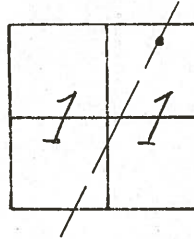
Ripple

Geyman

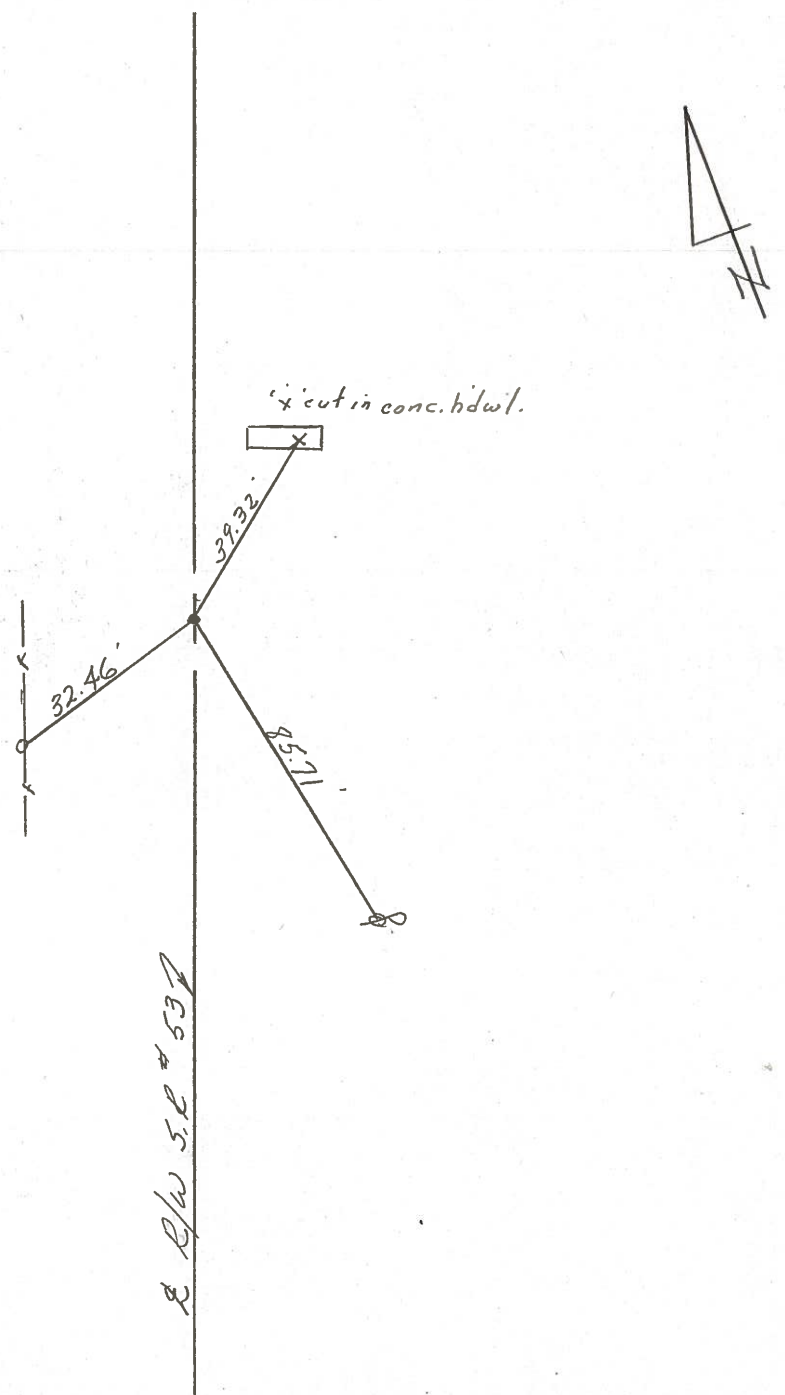
Masser

Barbour

#23



P.O.T.
135494±
set P.K. & washer atop P.K.
& washer - 1' Rt. & Paint.



PERSONNEL	TITLE	PERSONNEL	TITLE
Cronin		Schneider	
Pipple		Mosser	
Geyman		Barbour	

COUNTY Seneca DATE 12/17/75
 S. R. # 53 WEATHER overcast
 I.C.H. # 266 A-2
 SEC. I.C.H. # 266 G TEMP. 30°

DESCRIPTION Ties for Control Points

JOB NO. _____

