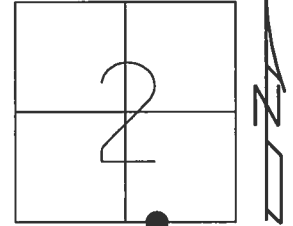


O.D.O.T. DISTRICT 2 SURVEY OFFICE (USE ONLY)

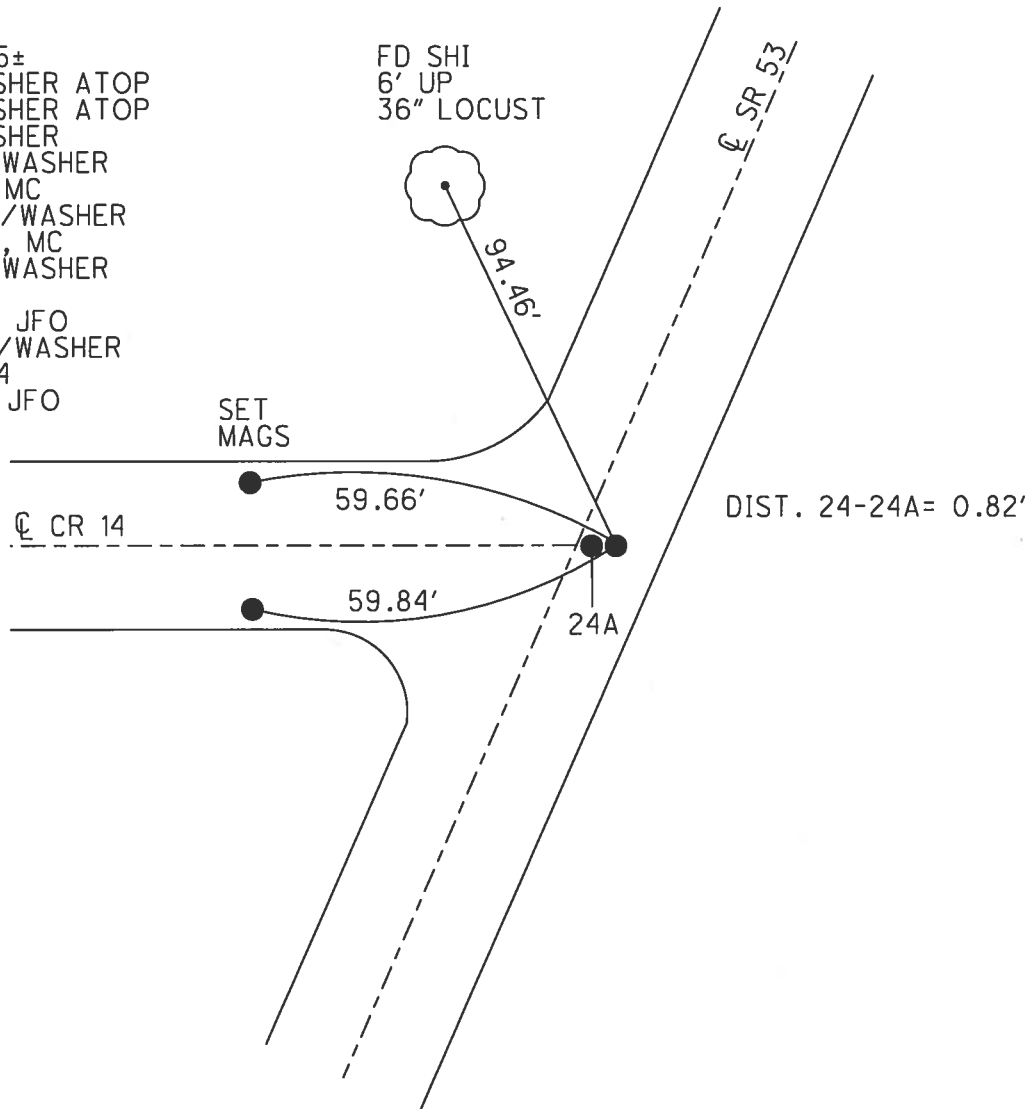
PERSONNEL _____ REFERENCE NO. 24 SHEET 28 OF 41
 NOTES RHOADES DATE 4/25/17 ROUTE SR 53
 H.C. O'DONNELL WEATHER CLOUDY COUNTY SENECA
 R.C. RHOADES TEMP. 57° TOWNSHIP SENECA
 _____ SECTION 2
 _____ T 1 N R 14 E

TYPE MONUMENT P.K./WASHER
 ON SURFACE - ~~BELOW~~ ON _____
~~LEFT~~ - CL PAV'T - RIGHT 1.5'
9.0' TO RT EDGE PAVEMENT
 S.L.M. 291+28.33

Grid: Northing: 510253.047 Easting: 1771328.218



RECORD:
 STA.0+55±
 P.K./WASHER ATOP
 P.K./WASHER ATOP
 P.K./WASHER
 FD P.K./WASHER
 7/2/97, MC
 SET P.K./WASHER
 10/16/97, MC
 FD P.K./WASHER
 REF24
 4/29/16, JFO
 SET MAG/WASHER
 NEWREF24
 8/31/17, JFO



O.D.O.T. DISTRICT 2 SURVEY OFFICE

PERSONNEL

REFERENCE NO. 24

SHEET 24 OF 34

NOTES Canterbury

H.C. Branham

R.C. Werner

Rousos - DRAWING

DATE 7/2/97

WEATHER SUNNY

TEMP. +75°

ROUTE 53

COUNTY SENECA

TOWNSHIP SENECA

SECTION 2

T. 1 N. R. 14 E.

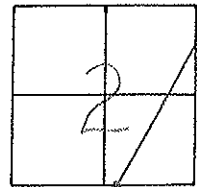
TYPE MONUMENT P.K. WASHER (Both)

ON SURFACE - BELOW SURFACE

LEFT = C. PAV'T. - RIGHT A: 15' RT & / B: 0.7 RT &

A 9.0 TO RT EDGE PAVEMENT

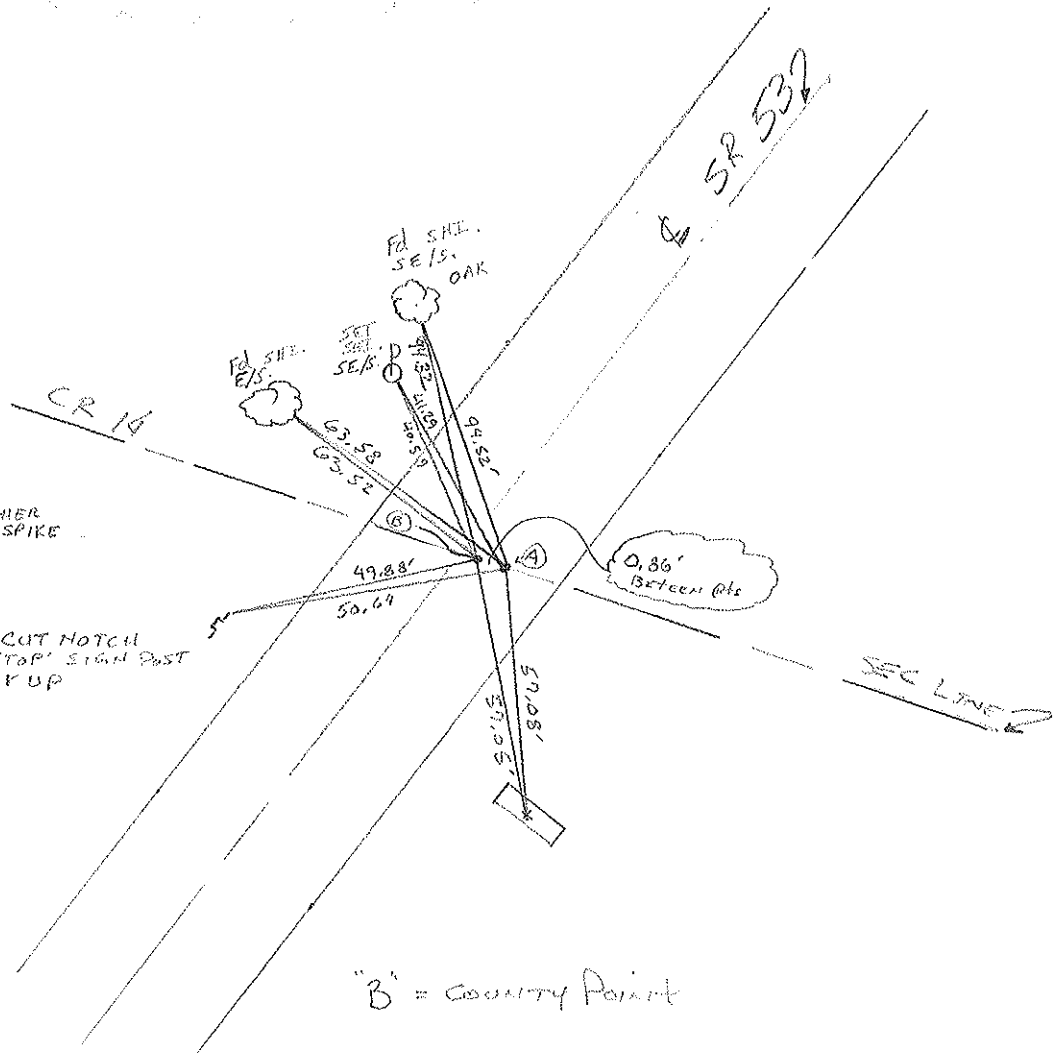
B 9.8 TO RT S.L.M. A 8+910.36 SLK / B 8+910.36 SLK



RESET P.K. WASHER @ BOTH PTS
 10/16/99
 M. R. C.

0+55±
 PK/WASHER ATOP
 SAME ATOP SAME
 CO. POINT = PK/WASHER
 ATOP SAME ATOP RR SPIKE

CUT NOTCH
 IN 'STOP' SIGN POST
 YUP



"B" = COUNTY POINT

O.D.O.T. DISTRICT 2 SURVEY OFFICE

PERSONNEL

REFERENCE NO. 24

SHEET 24 OF

NOTES CRONIN (DRAW)

DRAWN 11/08/89

H.C. RIDDLE

DATE 12/8/89

R.C. BARBOUR WORK

WEATHER SUNNY

GEYMAN

TEMP. 27°

ROUTE # 53

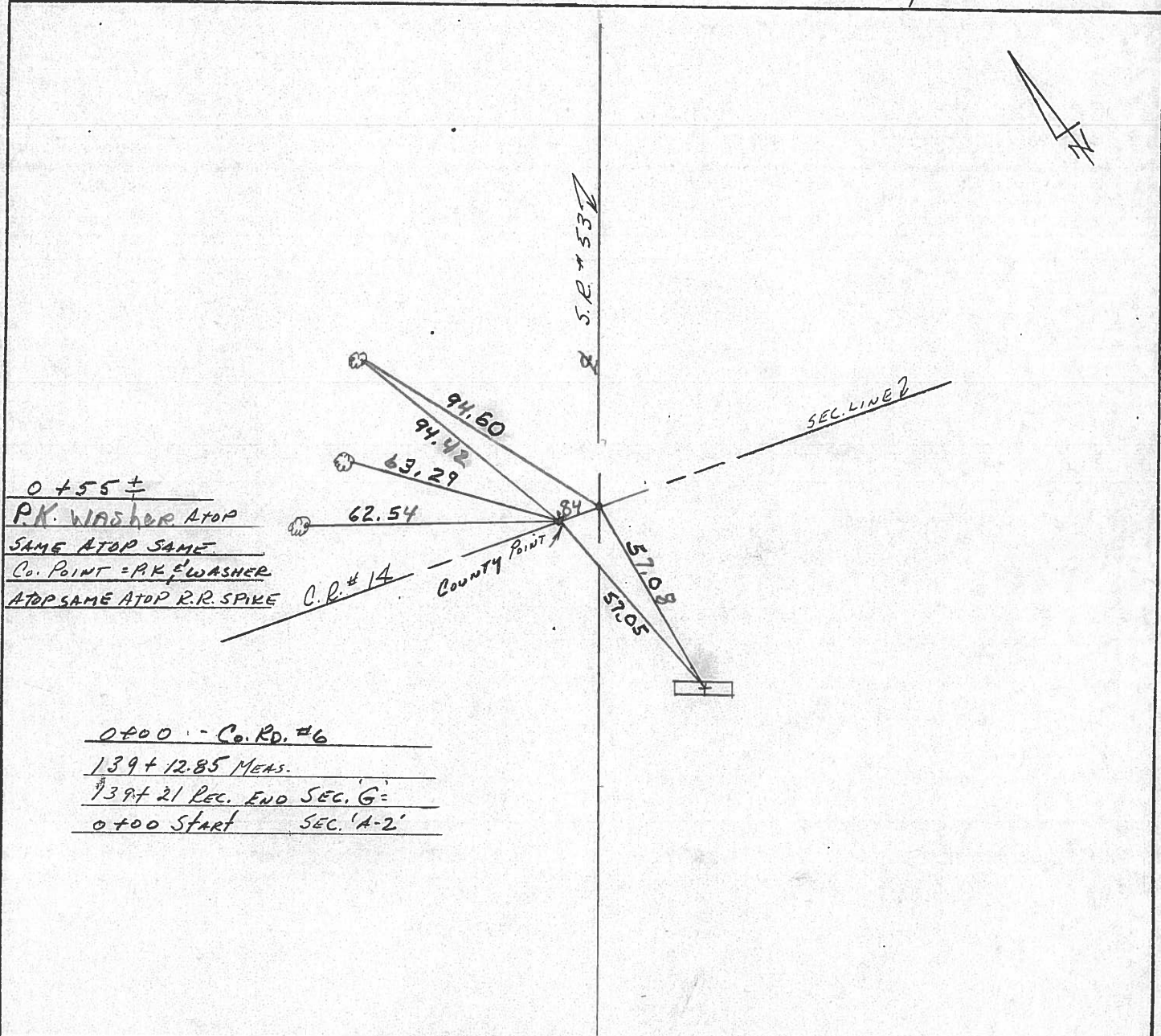
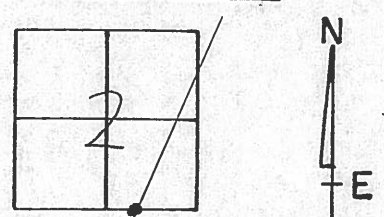
COUNTY SENECA

TOWNSHIP SENECA

SECTION 2

T 1 N R 14 E

TYPE MONUMENT P.K. Washer
 ON SURFACE - BELOW SURFACE
 LEFT - ☉ PAV'T. - RIGHT 1/4" x 1/4" ON E
 TO EDGE PAVEMENT
 S.L.M. 5.5188



0 + 55 ±
P.K. WASHER ATOP
SAME ATOP SAME
Co. POINT = P.K. WASHER
ATOP SAME ATOP R.R. SPIKE

0 + 00 - Co. Rd. #6
139 + 12.85 MEAS.
139 + 21 REC. END SEC. 'G'
0 + 00 Start SEC. 'A-2'

County Seneca S.R. 53

Date 8/10/82

Township Seneca

Weather sunny

Section 2

Temp. 65°

T/N, R/E

Personnel Cronin

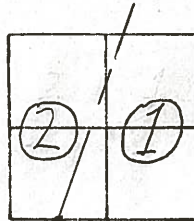
Ripple

Geyman

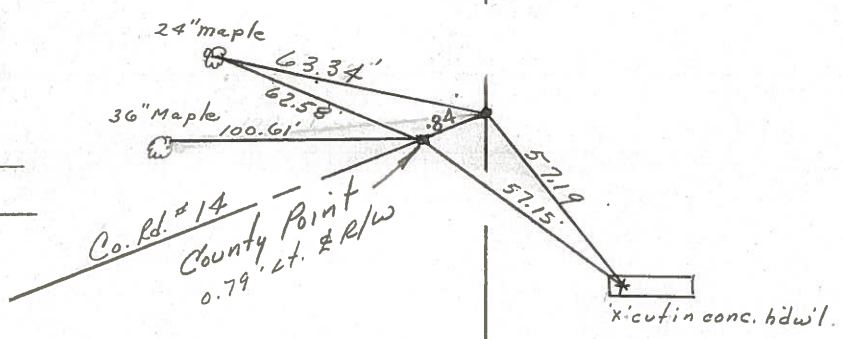
Mosser

Barbour

#24



0+55 ±
Set P.K.s, E washers atop
P.R. spike & P.K. washer



139+12.85 Meas
 139+21 Rec END Sec. G =
 0+00 Start Sec. A-2'

R/W S.R. #53A

PERSONNEL	TITLE	PERSONNEL	TITLE
Cronin		Schneider	
Epple		Mosser	
Geyman		Barbour	

COUNTY Seneca

DATE 12/17/75

S. R. # 53

WEATHER overcast

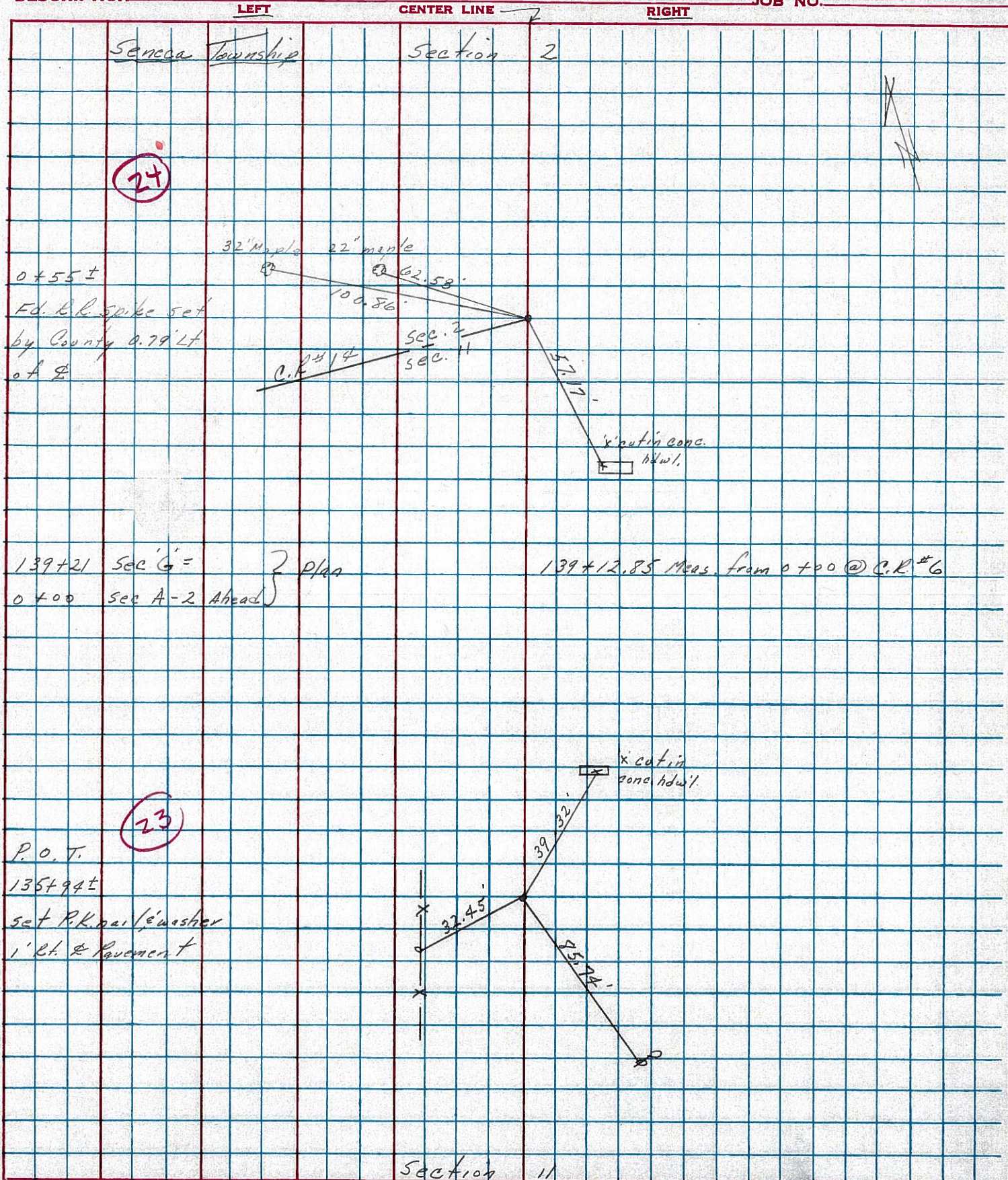
I.C.H. # 266 A-2

SEC. I.C.H. # 266 G

TEMP. 30°

DESCRIPTION Ties for Control Points

JOB NO.

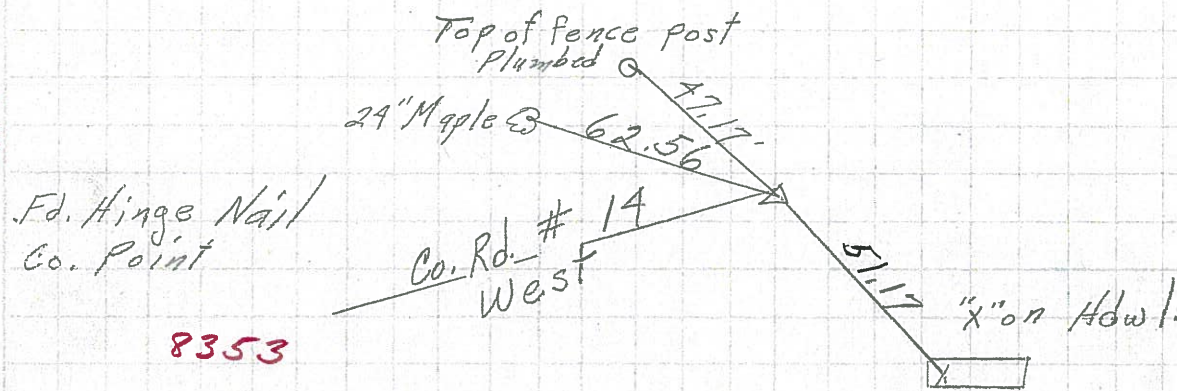


PERSONNEL	TITLE	PERSONNEL	TITLE	COUNTY	DATE
Schneider				Seneca	8-29-69
Mosser				S. R. 53	WEATHER Fair
Barbour				SEC. Wyandot Co. Line N.	TEMP. 70°
Potts					

DESCRIPTION Ties for Control Points JOB NO. _____

LEFT CENTER LINE RIGHT

24



15

