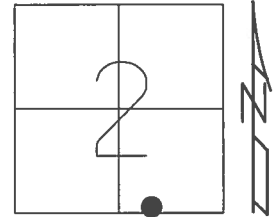


O.D.O.T. DISTRICT 2 SURVEY OFFICE (USE ONLY)

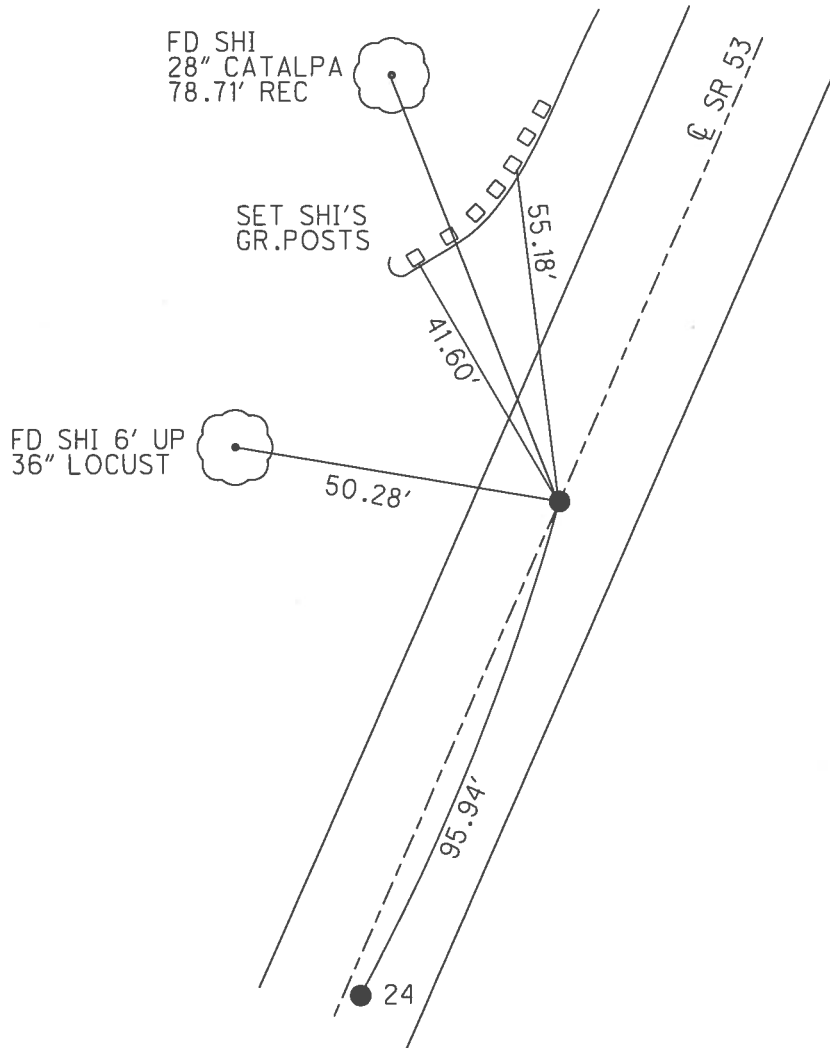
PERSONNEL _____ REFERENCE NO. 25 SHEET 30 OF 41

NOTES	<u>RHOADES</u>	DATE	<u>4/21/17</u>	ROUTE	<u>SR 53</u>
H.C.	<u>O'DONNELL</u>	WEATHER	<u>CLOUDY</u>	COUNTY	<u>SENECA</u>
R.C.	<u>RHOADES</u>	TEMP.	<u>52°</u>	TOWNSHIP	<u>SENECA</u>
				SECTION	<u>2</u>
				T	<u>1</u> N
				R	<u>14</u> E

TYPE MONUMENT P.K./WASHER
 ON SURFACE - ~~BELOW~~ ON
 LEFT - ☉ PAV'T - RIGHT ON
10.5' TO LT EDGE PAVEMENT
 S.L.M. 292+24.49
 Grid: Northing: 510342.753 Easting: 1771362.214



RECORD: P.I.
 $\Delta = 01^{\circ} 14' RT$
 STA. 1+50
 P.K./WASHER ATOP
 P.K./WASHER ATOP
 BOAT SPIKE/WASHER
 FD P.K./WASHER
 7/2/97, MC
 SET P.K./WASHER
 10/16/97, MC
 FD P.K./WASHER
 REF25
 4/29/16, JFO
 SET MAG/WASHER
 NEWREF25
 9/7/17, JFO



O.D.O.T. DISTRICT 2 SURVEY OFFICE

PERSONNEL

REFERENCE NO. 25

SHEET 25 OF 34

NOTES CANTERBURY

H.C. BARNHISEL

R.C. WEAVER

DATE 7/2/97

WEATHER SUNNY

TEMP. +72°F

ROUTE S.R. #53

COUNTY SENECA

TOWNSHIP SENECA

SECTION 2

T.L.N.R. 14 E

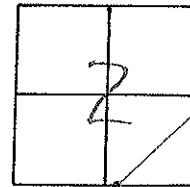
TYPE MONUMENT P.K./WASHER

ON SURFACE - BELOW SURFACE

LEFT - ☉ PAV'T. - RIGHT ON ☉

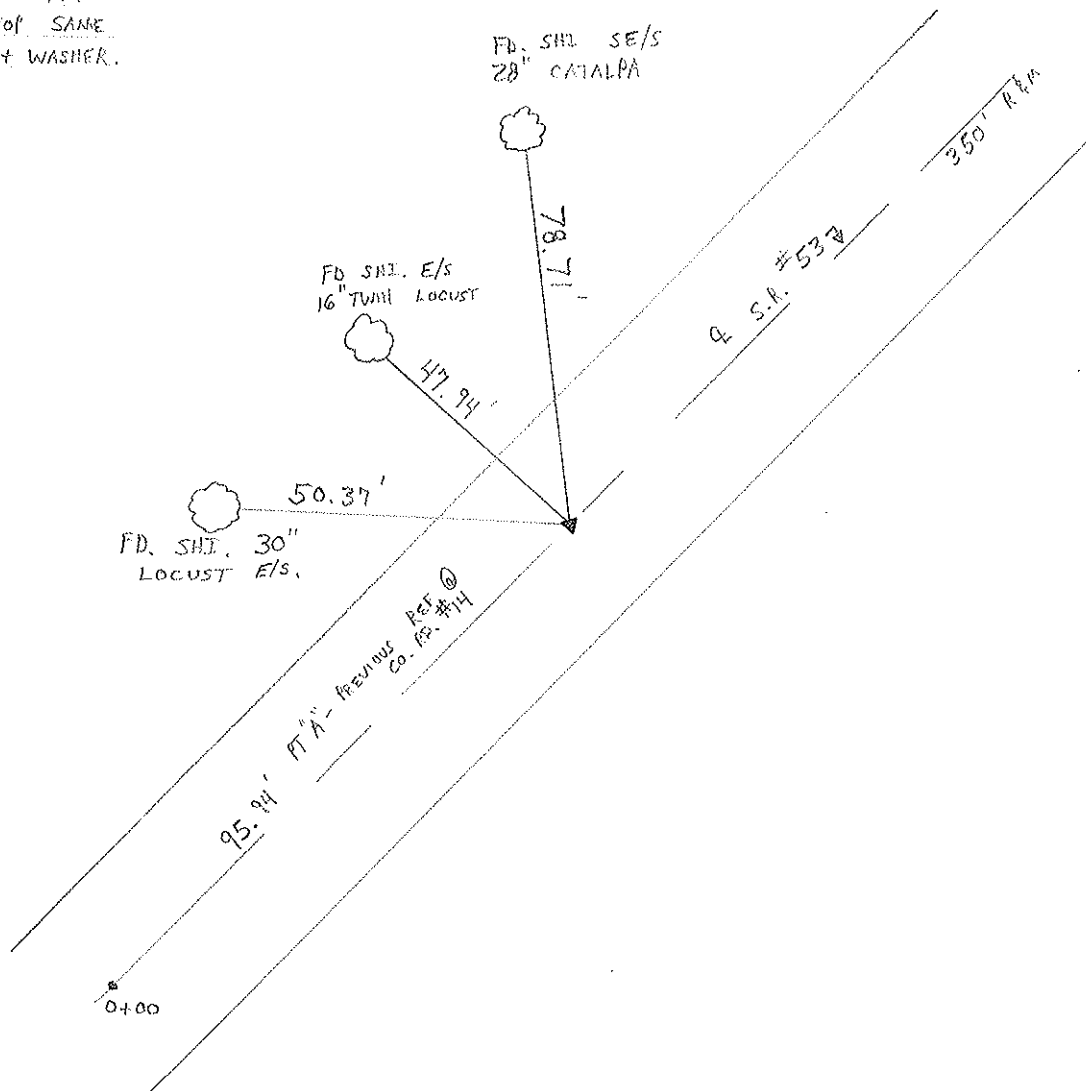
10.5 TO LT. EDGE PAVEMENT

S.L.M. 8 + 939.60 SLK



RECORD: P.I. STA 1+50
 $\Delta = 01^\circ 14'$ RT R&M
 P.K. + WASHER ATOP SAME
 ATOP BOAT SPIKE + WASHER.

RESET P.K./WASHER
 10/16/97
 M.R.C.



O.D.O.T. DISTRICT 2 SURVEY OFFICE

PERSONNEL

REFERENCE NO. 25

SHEET 25 OF _____

NOTES CRONIN (DRAW)

DRAWN 11/08/89

H.C. RIPPLE

DATE 12/8/89

ROUTE #53

R.C. BARBOUR

WEATHER SUNNY

COUNTY SENECA

GEYMAN

TEMP. 27°

TOWNSHIP SENECA

SECTION 2

T 1 N R 14 E

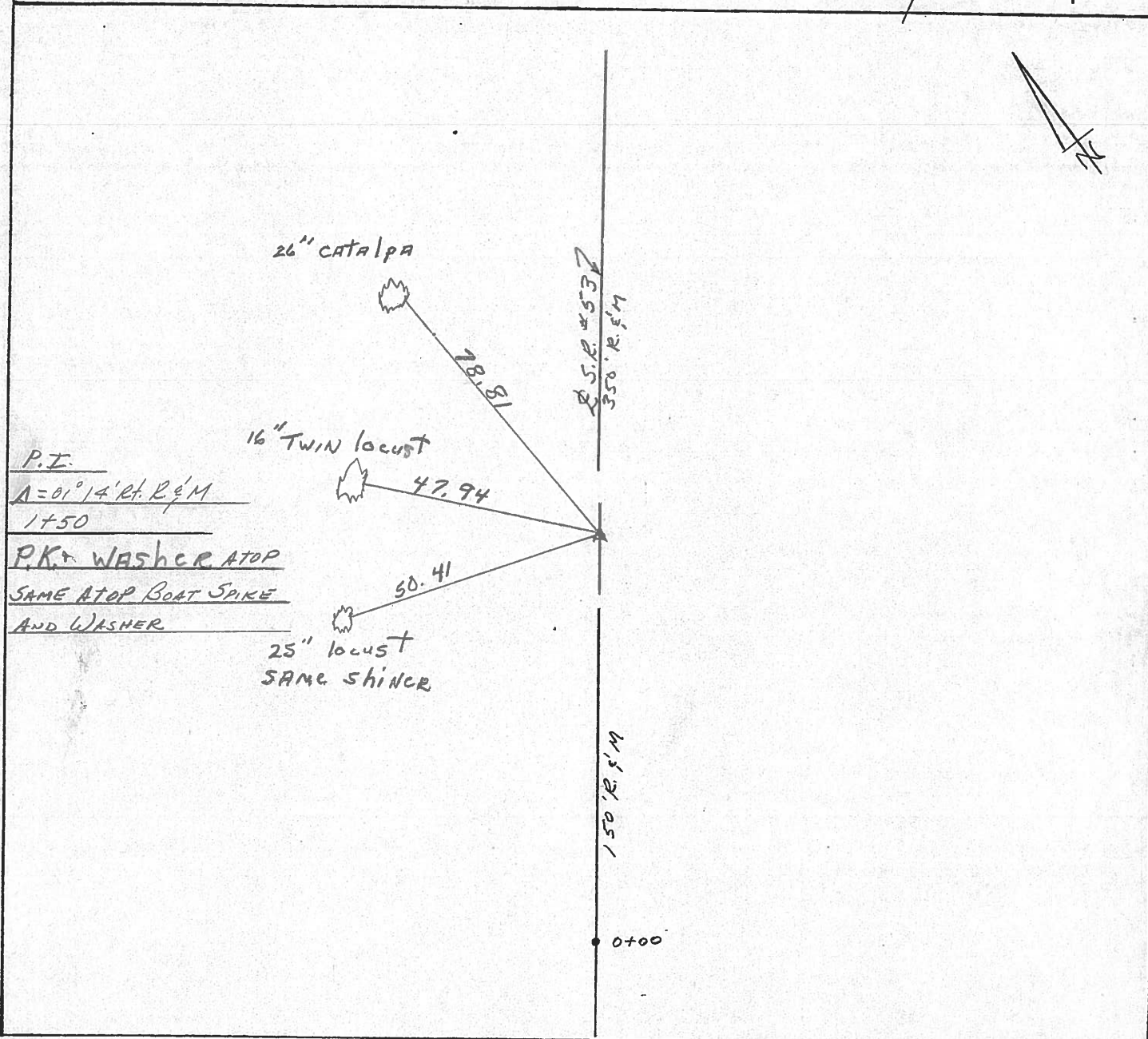
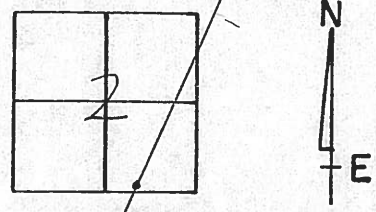
TYPE MONUMENT P.K. WASHER

ON SURFACE - BELOW SURFACE

LEFT- & PAV'T. - RIGHT &

TO EDGE PAVEMENT

S.L.M. _____



Q.D.O.T. DISTRICT 2 SURVEY OFFICE

Sht. ___ of ___

10

County Seneca S.R. # 53

Date 8/10/82

Township Seneca

Weather sunny

Section # 2

Temp. 65°

T1N, R14E

Personnel Cronin

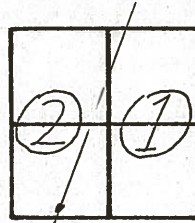
Ripple

Geyman

Barbour

Mosser

#25



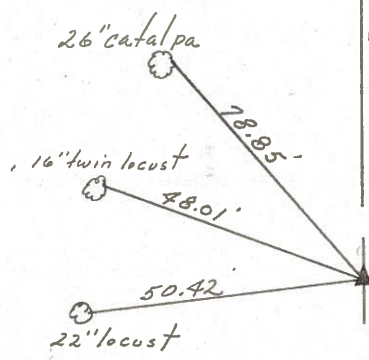
$\Delta = 01^{\circ}14' \text{ Rt Plan \& Meas}$

P.I.

1+50

set P.K. \& washer at top boat

spike \& washer



350.00' Rec. \& Meas.

S.R. # 53
150.00' Rec. \& Meas.



PERSONNEL TITLE PERSONNEL TITLE

Cronin Schneider
Ripple Mosser
Geyman Barbour

COUNTY Seneca DATE 12/17/75

S. R. # 53 WEATHER overcast

SEC. I. C. H. # 266 A-2 TEMP. 30°

DESCRIPTION Ties for Control Points

JOB NO.

LEFT

CENTER LINE

RIGHT

Seneca Township

Section 2

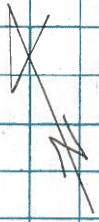
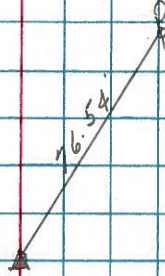
26

$\Delta = 01^{\circ}32'$ Lt. Plan & Meas.

P.I.

5x00

Set small square spike & washer



350.00 Rec. & Meas.

25

23" Ash

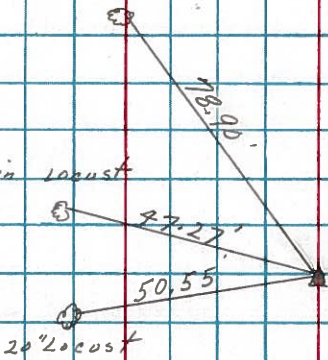
$\Delta = 01^{\circ}14'$ Rt. Plan & Meas.

14" Twin Locust

P.I.

1x50

Set small square spike & washer



150.00 Rec. & Meas.

Section 2