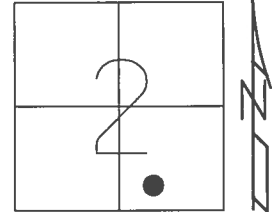


O.D.O.T. DISTRICT 2 SURVEY OFFICE (USE ONLY)

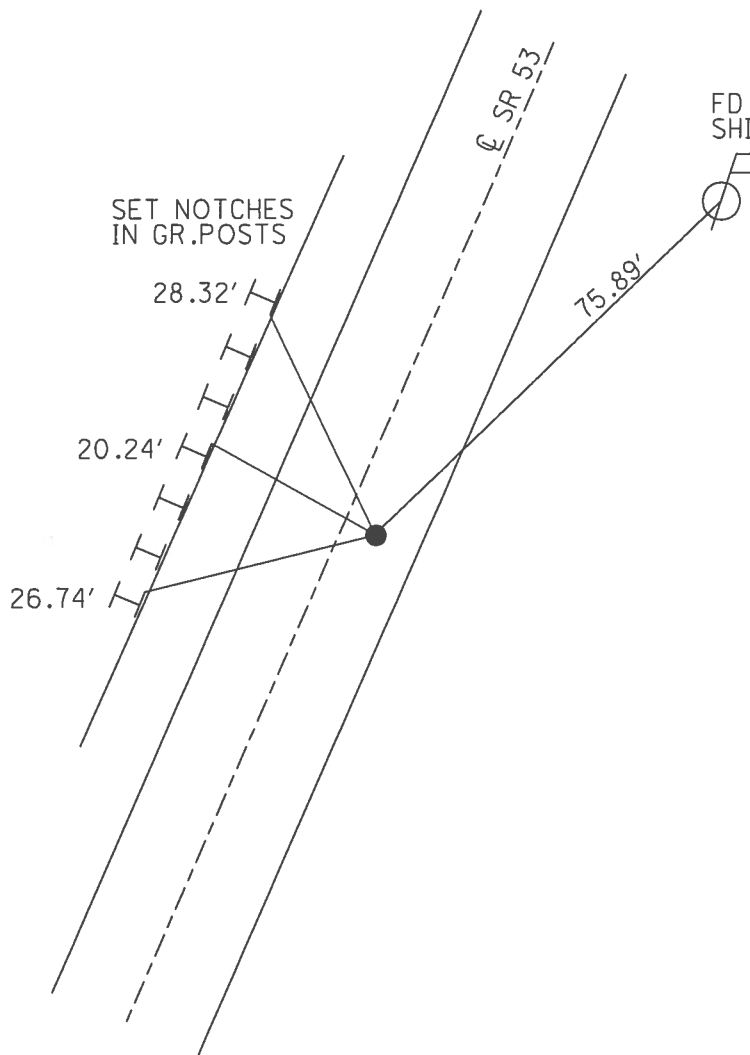
PERSONNEL _____ REFERENCE NO. 26 SHEET 31 OF 41
 NOTES RHOADES DATE 4/21/17 ROUTE SR 53
 H.C. O'DONNELL WEATHER CLOUDY COUNTY SENECA
 R.C. RHOADES TEMP. 53° TOWNSHIP SENECA
 _____ SECTION 2
 _____ T 1 N R 14 E

TYPE MONUMENT P.K./WASHER
 ON SURFACE - ~~BELOW~~ ON _____
~~LEFT~~ - C PAV'T - RIGHT 1.8'
8.8' TO RT EDGE PAVEMENT
 S.L.M. 295+74.35



Grid: Northing: 510667.674 Easting: 1771491.948

RECORD: P.I.
 $\Delta = 01^{\circ}32' \text{ LT}$
 STA. 5+00
 P.K./WASHER
 FD P.K./WASHER
 7/2/97, MC
 SET P.K./WASHER
 10/16/97, MC
 FD P.K./WASHER
 REF26
 4/29/16, JFO
 SET MAG/WASHER
 NEWREF26
 9/7/17, JFO



O.D.O.T. DISTRICT 2 SURVEY OFFICE

PERSONNEL

REFERENCE NO. 26

SHEET 26 OF 34

NOTES CANTERBURY

H.C. BARNHISEL

R.C. WEAVER

DATE 7/2/94

WEATHER SUN

TEMP. +75°F

ROUTE #53

COUNTY SENECA

TOWNSHIP SENECA

SECTION 2

T 1 N R 14 E

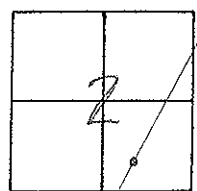
TYPE MONUMENT P.K. / WASHER

ON SURFACE - ~~BELOW~~ SURFACE

LEFT-~~CL~~ PAV'T. - RIGHT 1.8' RT ♀

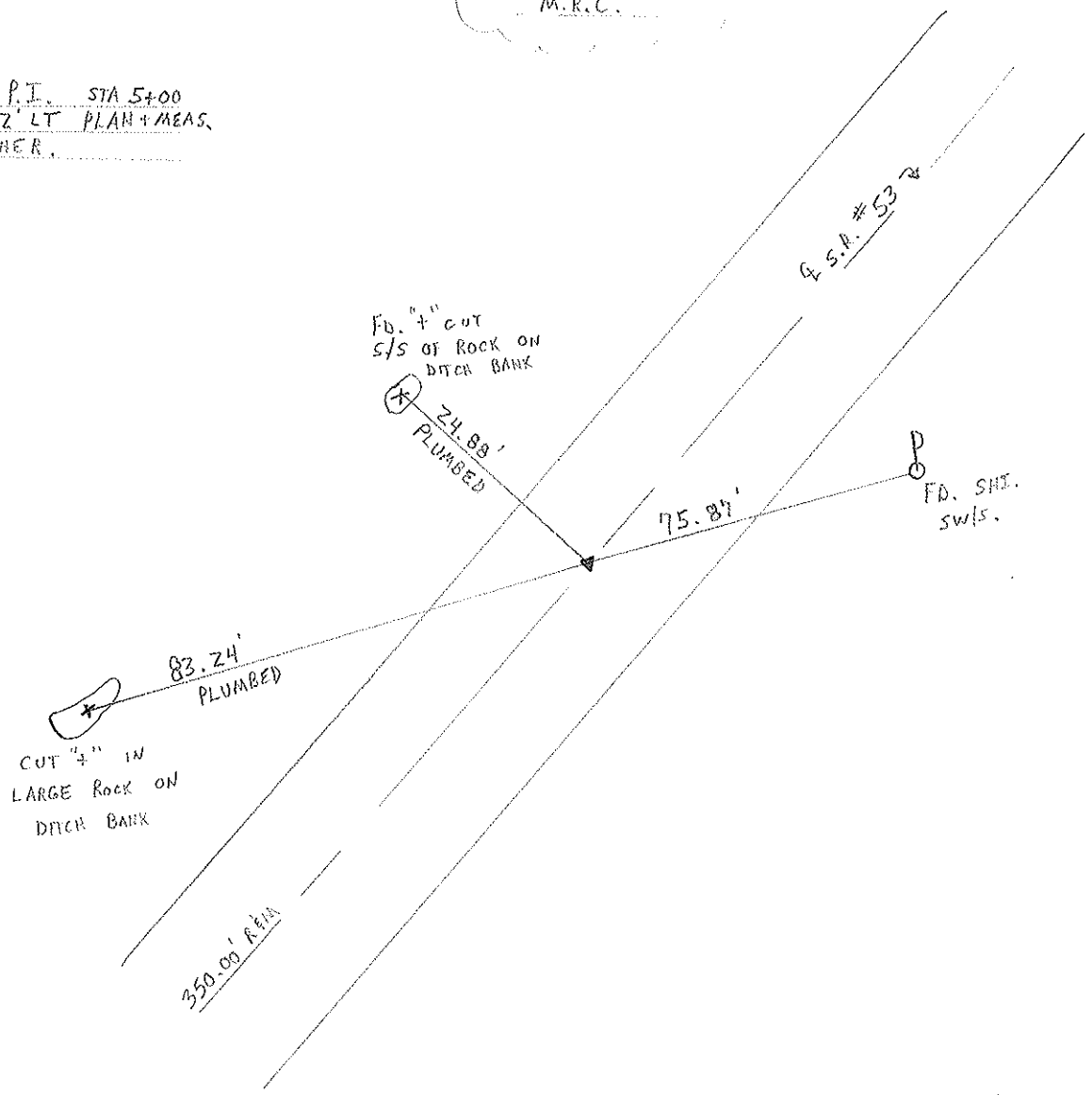
8.8' TO RT EDGE PAVEMENT

S.L.M. 9+046.28 SLK



RESET P.K. + WASHER
 10/16/97
 M.R.C.

RECORD: P.I. STA 5+00
 A= 01° 32' LT PLAN + MEAS.
 P.K. + WASHER.



O.D.O.T. DISTRICT 2 SURVEY OFFICE

PERSONNEL

REFERENCE NO. 26

SHEET 26 OF

NOTES Cronin (DRAW)

DRAWN 11/08/89

H.C. RIPPLE

DATE 12/8/89

R.C. BARBOUR WORK
GEYMAN

WEATHER SUNNY

TEMP. 27°

ROUTE #53

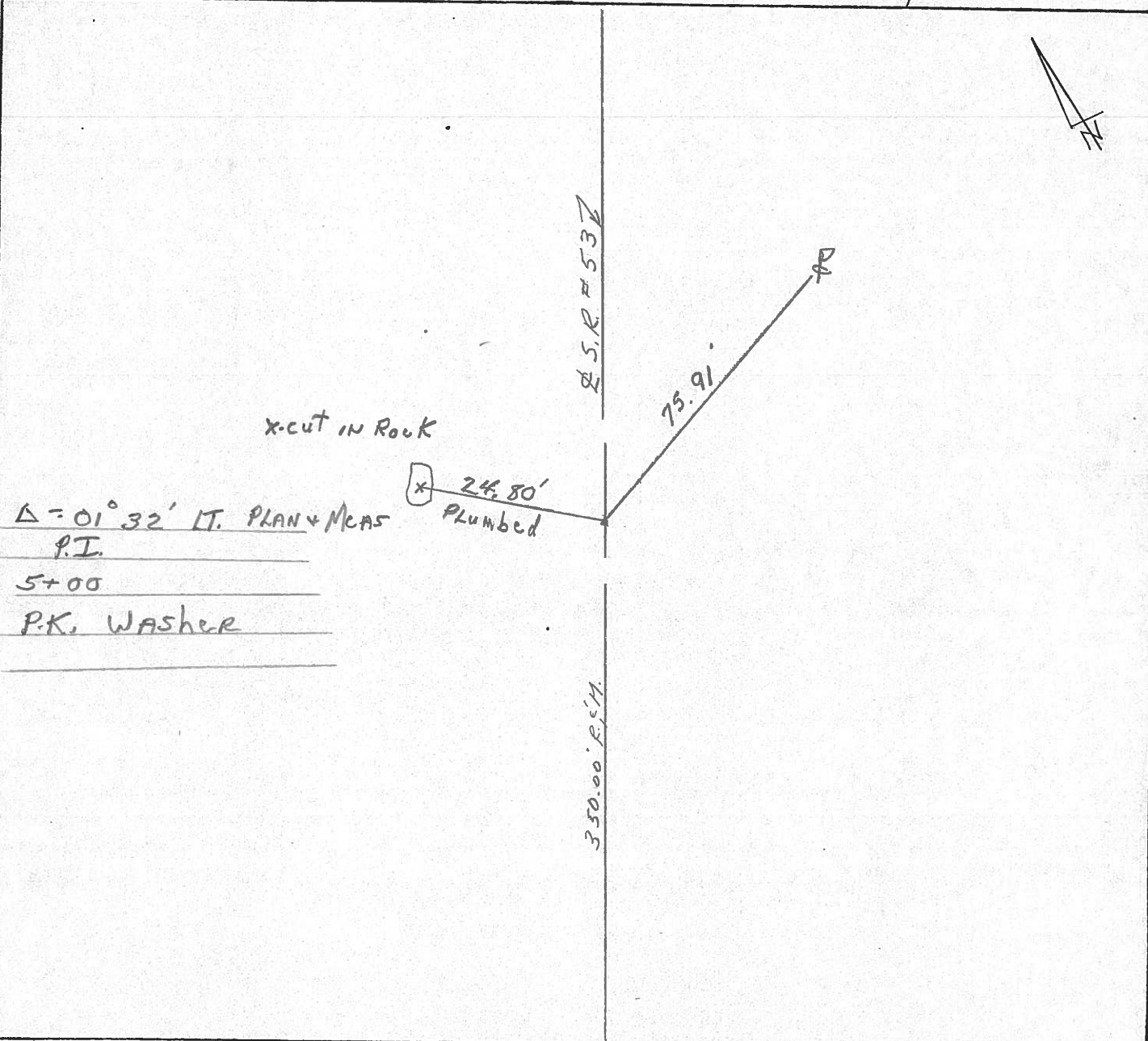
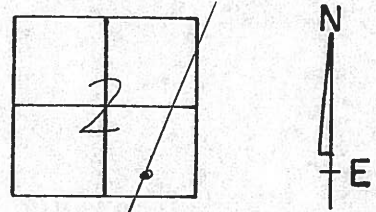
COUNTY SENECA

TOWNSHIP SENECA

SECTION 2

T. 1 N. R. 14 E.

TYPE MONUMENT P.K. WASHER
ON SURFACE - BELOW SURFACE
LEFT - ¢ PAV'T. - RIGHT 2' RT. E
TO EDGE PAVEMENT
S.L.M.



Q.D.O.T. DISTRICT 2 SURVEY OFFICE

Sht. ___ of ___

County Seneca S.R. #53

Date 8/10/82

Township Seneca

Weather sunny

Section 2

Temp. 65°

T1N, R14E

Personnel Cronin

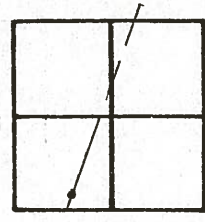
Ripple

Geyman

Mosser

Barbour

#26



$\Delta = 01^{\circ}32'$ Lt. Plan. & Meas

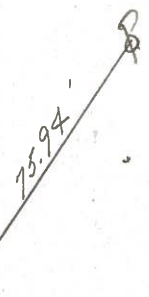
P.I.

5700

set P.I. washer about
spike & washer 2' Lt. & point.

cut in rock

24.77
plumbed



S.R. #53
350.00' Rec. & Meas.

PERSONNEL TITLE PERSONNEL TITLE

Cronin Schneider
Ripple Mosser
Geyman Barbour

COUNTY Seneca

DATE 12/17/75

S. R. # 53

WEATHER overcast

SEC. I. C. H. # 266 A-2

TEMP. 30°

DESCRIPTION Ties for Control Points

JOB NO.

