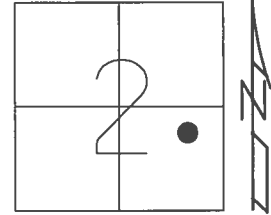


O.D.O.T. DISTRICT 2 SURVEY OFFICE (USE ONLY)

PERSONNEL _____ REFERENCE NO. 27 SHEET 32 OF 41

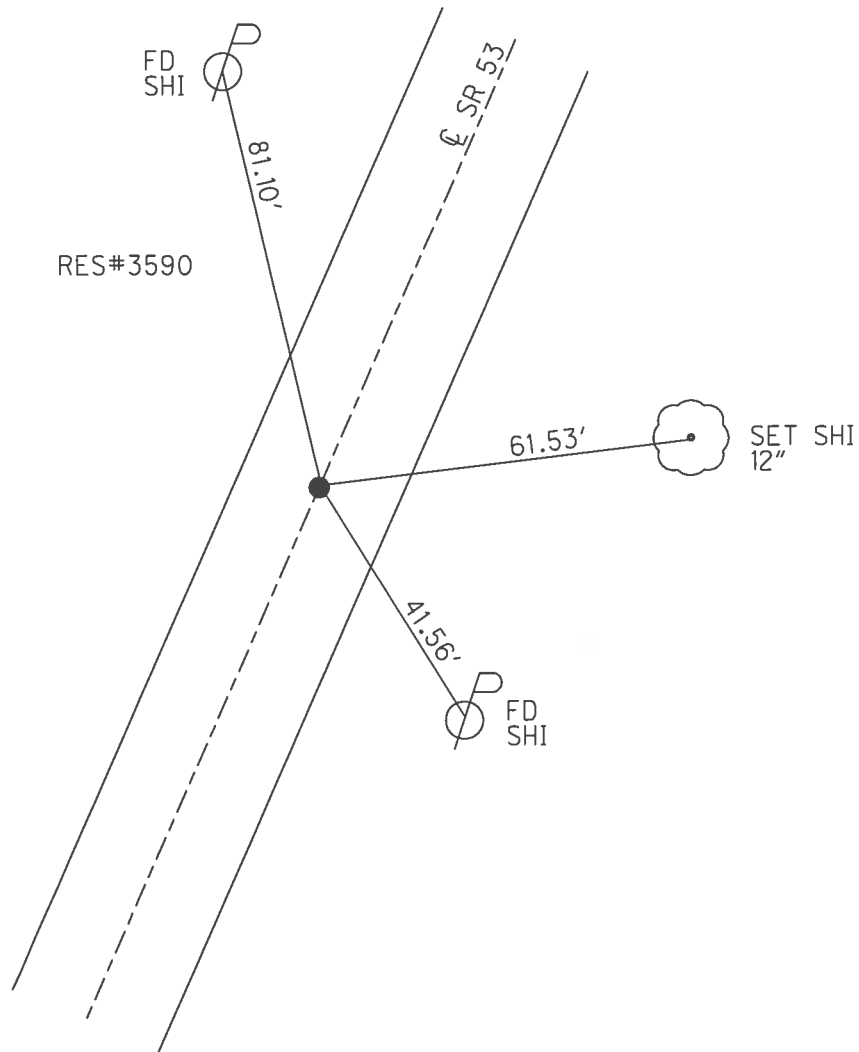
NOTES	RHOADES	DATE	<u>4/20/17</u>	ROUTE	<u>SR 53</u>
H.C.	<u>O'DONNELL</u>	WEATHER	<u>WINDY</u>	COUNTY	<u>SENECA</u>
R.C.	<u>RHOADES</u>	TEMP.	<u>79°</u>	TOWNSHIP	<u>SENECA</u>
				SECTION	<u>2</u>
				T	<u>1</u> N
				R	<u>14</u> E

TYPE MONUMENT P.K./WASHER
 ON SURFACE - ~~BELOW~~ ON
 LEFT - ☉ PAV'T - RIGHT ON
10.5' TO LT EDGE PAVEMENT
 S.L.M. 315+74.60



Grid: Northing: 512544.462 Easting: 1772183.888

RECORD: P.I.
 $\Delta = 00^{\circ}22' RT$
 STA. 25+00
 P.K./WASHER ATOP
 P.K./WASHER ATOP
 BOAT SPIKE/WASHER
 FD P.K./WASHER
 7/2/97, MC
 SET P.K./WASHER
 10/16/97, MC
 FD P.K./WASHER
 REF27
 4/29/16, JFO
 SET MAG/WASHER
 NEWREF27
 9/7/17, JFO



O.D.O.T. DISTRICT 2 SURVEY OFFICE

PERSONNEL

REFERENCE NO. 27

SHEET 27 OF 34

NOTES CANTERBURY

H.C. BARNHISEL

R.C. WEAVER

DATE 7/2/97

WEATHER SUN

TEMP. +78° F

ROUTE #53

COUNTY SENECA

TOWNSHIP SENECA

SECTION Z

T. 1 N. R 14 E

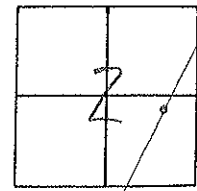
TYPE MONUMENT P.K. + WASHER

ON SURFACE - BELOW SURFACE

~~LEFT - & PAV'T. - RIGHT~~ ON &

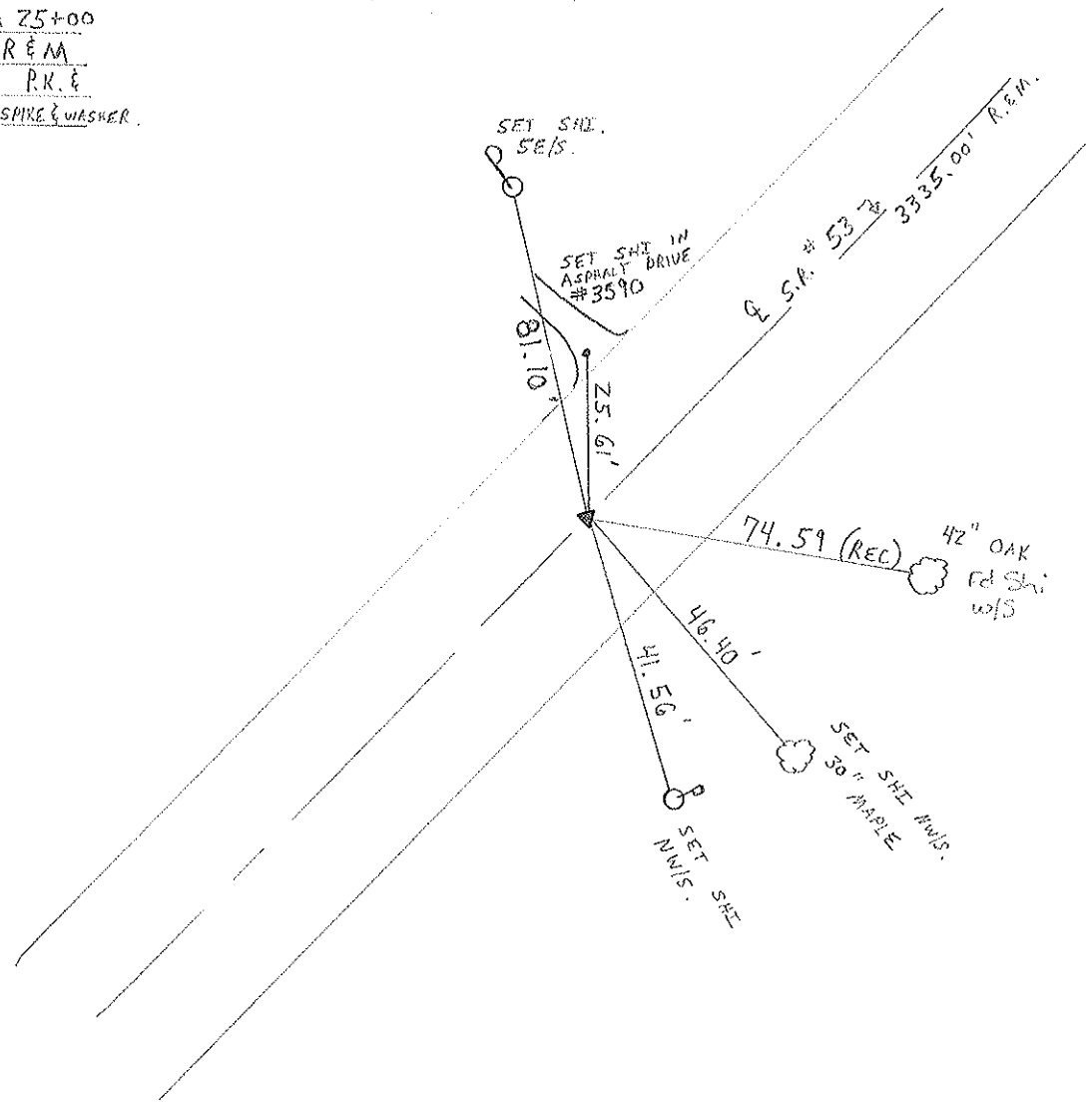
10.5 TO LT EDGE PAVEMENT

S.L.M. 9+658.53 SLK



RESET P.K./WASHER
 10/16/97
 M.R.C.

RECORD: P.I. STA 25+00
 $\Delta = 00^\circ 22' RT. REM.$
 P.K. & WASHER ATOP P.K. &
 WASHER ATOP BONY SPIRE & WASHER.



O.D.O.T. DISTRICT 2 SURVEY OFFICE

PERSONNEL

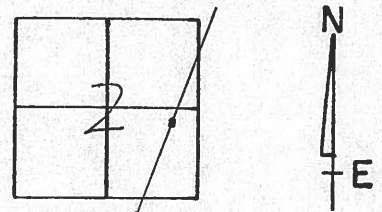
NOTES CRONIN (DRAW)
 H.C. RIPPLE
 R.C. BARBOUR WORK
GEYMAN

REFERENCE NO. 27
 DRAWN 11/08/89
 DATE 12/8/89
 WEATHER SUNNY
 TEMP. 27°

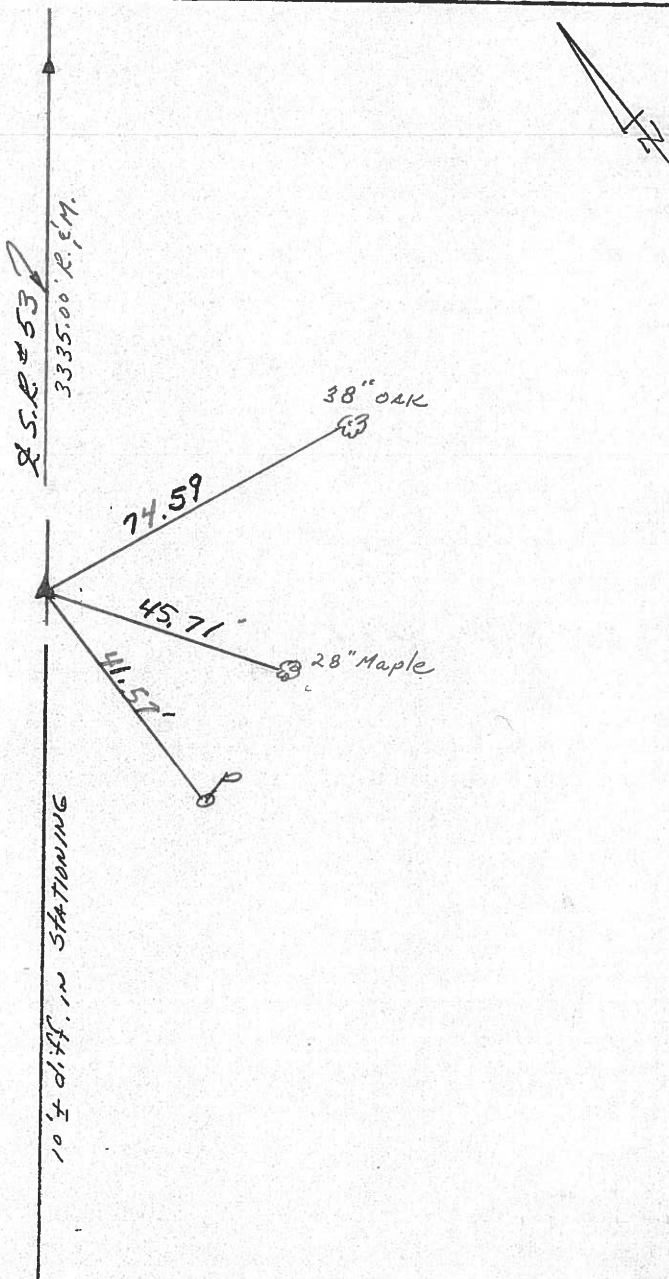
SHEET 27 OF

ROUTE #53
 COUNTY SENECA
 TOWNSHIP SENECA
 SECTION 2
T 1 N R 14 E

TYPE MONUMENT P.K. WASHER
 ON SURFACE - BELOW SURFACE
 LEFT- & PAV'T. - RIGHT &
 TO EDGE PAVEMENT
 S.L.M. 5.9812



A = 00°22' RT. R. & M.
P.I.
25+00
P.K. WASHER ATOP
P.K. & WASHER ATOP
BOAT SPIKE & WASHER



Q.D.O.T. DISTRICT 2 SURVEY OFFICE

Sht. of

County Seneca S.R.#53

Date 8/10/82

Township Seneca

Weather sunny

Section 2

Temp. 60°

T1N, R14E

Personnel Cronin

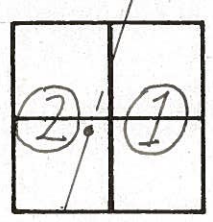
Ripple

Geyman

Mosser

Barbour

#27



$\Delta = 00^{\circ}22'$ Rt. Plan, & Meas.

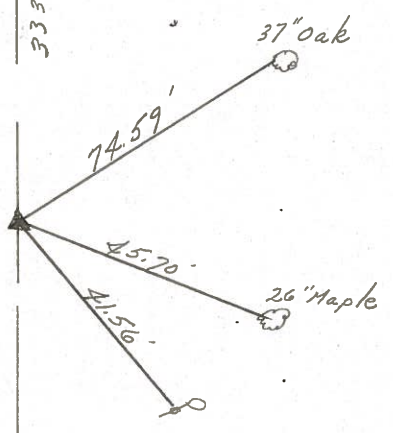
P.I.

25+00

set P.K. & washer atop boat

spike & washer

3335.00 Rec. & Meas.



S.R.#53
10.00 ± bust in stationing

PERSONNEL	TITLE	PERSONNEL	TITLE
Cronin		Schneider	
Ripple		Masser	
Geyman		Barbour	

COUNTY Seneca DATE 1/6/76
 S. R. # 53 WEATHER sunny-cold
 SEC. I.C.H. # 266 A-2 TEMP. 22°

DESCRIPTION Ties for Control Points JOB NO. _____

