

O.D.O.T. DISTRICT 2 SURVEY OFFICE (USE ONLY)

PERSONNEL _____ REFERENCE NO. 29 SHEET 34 OF 41

NOTES RHOADES DATE 4/20/17 ROUTE SR 53
 H.C. O'DONNELL WEATHER WINDY COUNTY SENECA
 R.C. RHOADES TEMP. 71° TOWNSHIP HOPEWELL
 _____ SECTION 36
 _____ T 2 N R 14 E

TYPE MONUMENT P.K.NAIL

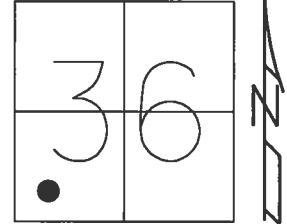
ON SURFACE - ~~BELOW~~ ON _____

~~LEFT~~ - ℄ PAV'T - RIGHT 0.7'

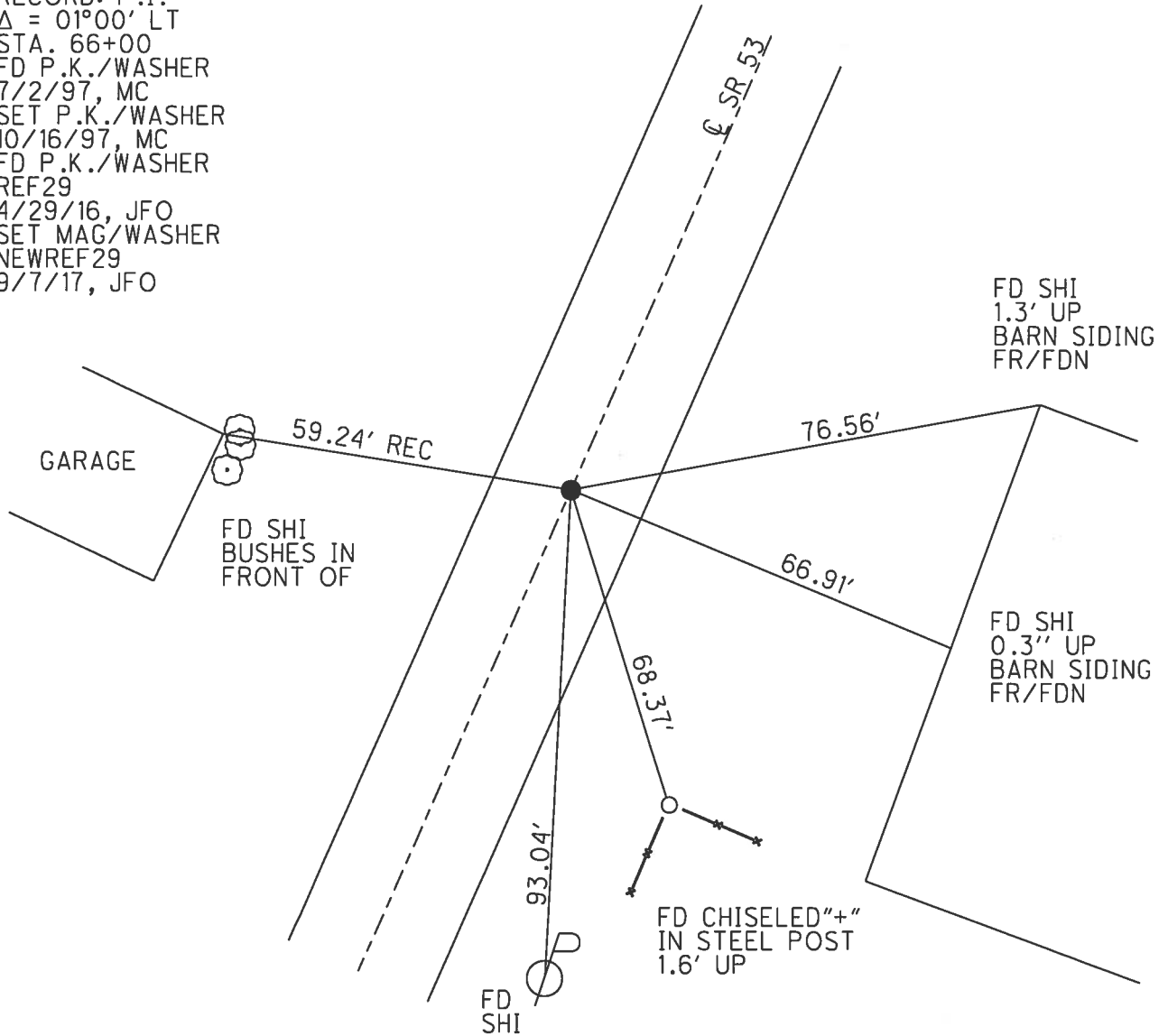
9.7' TO RT EDGE PAVEMENT

S.L.M. 356+73.69

Grid: Northing: 516392.505 Easting: 1773594.728



RECORD: P.I.
 $\Delta = 01^{\circ}00' \text{ LT}$
 STA. 66+00
 FD P.K./WASHER
 7/2/97, MC
 SET P.K./WASHER
 10/16/97, MC
 FD P.K./WASHER
 REF29
 4/29/16, JFO
 SET MAG/WASHER
 NEWREF29
 9/7/17, JFO



O.D.O.T. DISTRICT 2 SURVEY OFFICE

PERSONNEL

REFERENCE NO. 29

SHEET 29 OF 34

NOTES CANTERBURY

H.C. BARNHISEL

R.C. WEAVER

DATE 7/2/97

WEATHER SUN

TEMP. +78° F

ROUTE #53

COUNTY SENECA

TOWNSHIP HOPWELL

SECTION 36

T Z N R 14 E

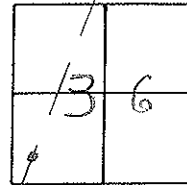
TYPE MONUMENT P.K. WASHER

ON SURFACE - BELOW 1 1/2" DOWN

LEFT - 0 PAV'T. - RIGHT 0.7' RT &

9.7' TO RT EDGE PAVEMENT

S.L.M. 10 + 911.89

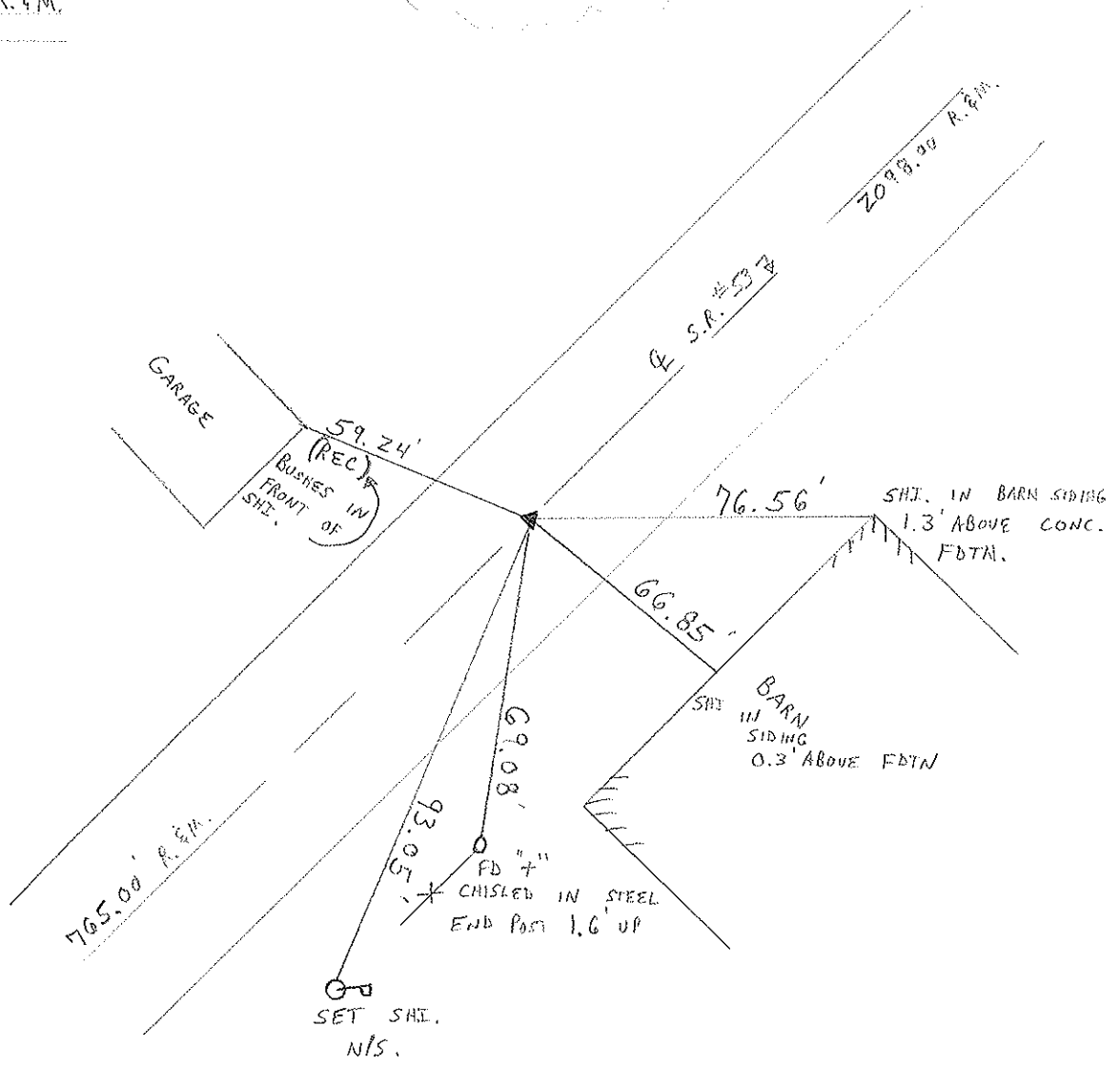


RECORD: P.I. STA 66+00
A = 01° 00' LT R.F.M.

RESET P.K. WASHER

10/16/97

M.R.C.



O.D.O.T. DISTRICT 2 SURVEY OFFICE

PERSONNEL

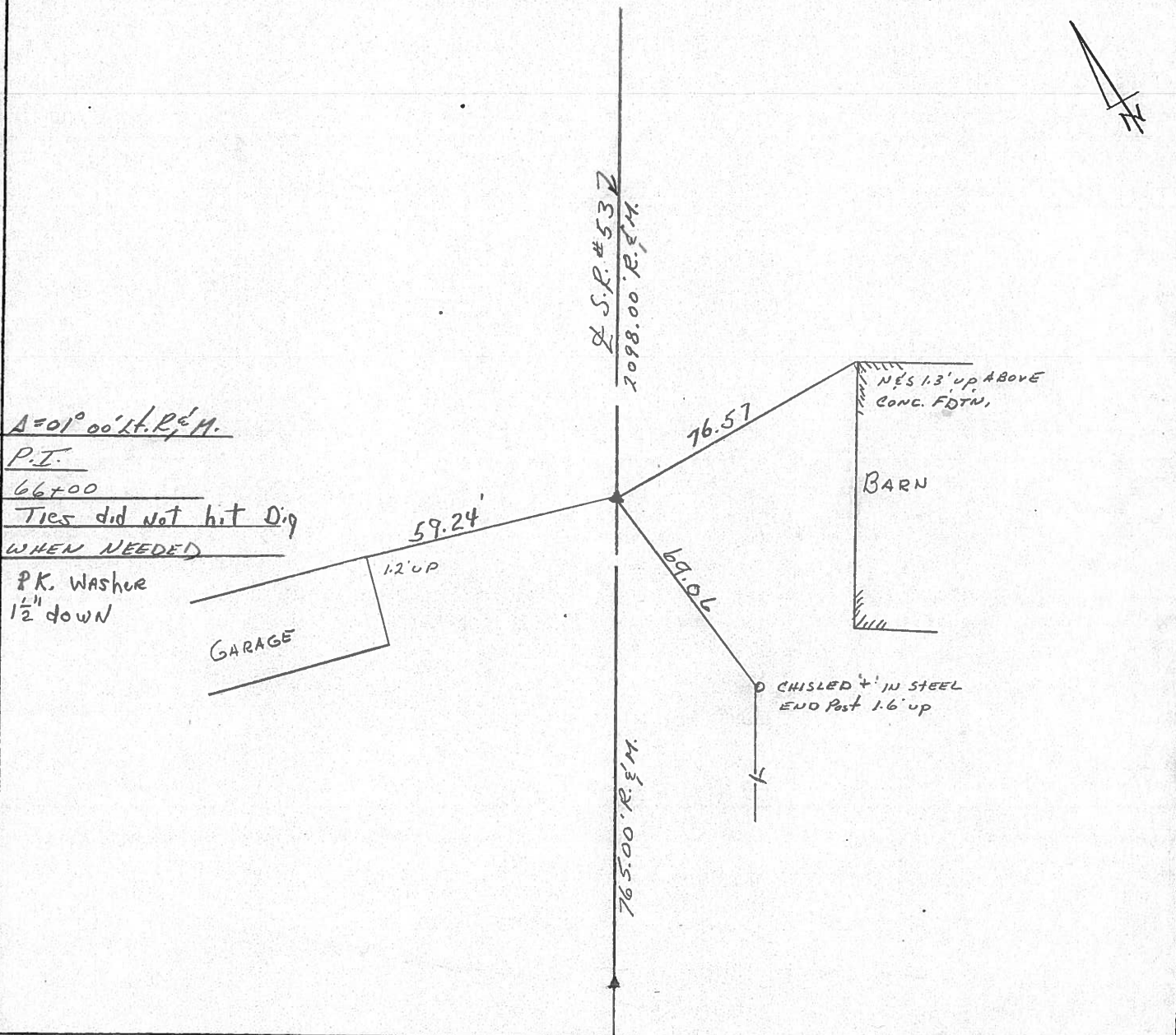
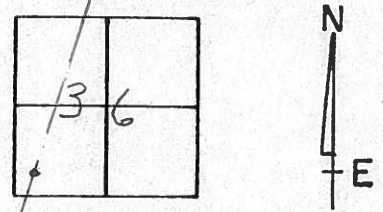
NOTES CLONIN (DRAW)
 H.C. RIPPE
 R.C. BARBOUR & WORK
GEYMAN

REFERENCE NO. 29
 DRAWN 11/09/89
 DATE 12-12-89
 WEATHER SUNNY
 TEMP. 22°

SHEET 29 OF

ROUTE #53
 COUNTY SENECA
 TOWNSHIP HOPEWELL
 SECTION 36
T 2 N R 14 E

TYPE MONUMENT P.K. Washer
 ON SURFACE - BELOW 1 1/2" below surface
 LEFT - ☉ PAV'T. - RIGHT ☉
 TO EDGE PAVEMENT
 S.L.M. 6-7578



Q.D.O.T. DISTRICT 2 SURVEY OFFICE

Sht. of

County Seneca S.R.#53

Date 8/10/82

Township Hopewell

Weather sunny

Section 36

Temp. 60°

T2N, R4E

Personnel Cronin

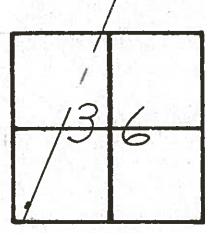
Ripple

Geyman

Messer

Barbour

#29



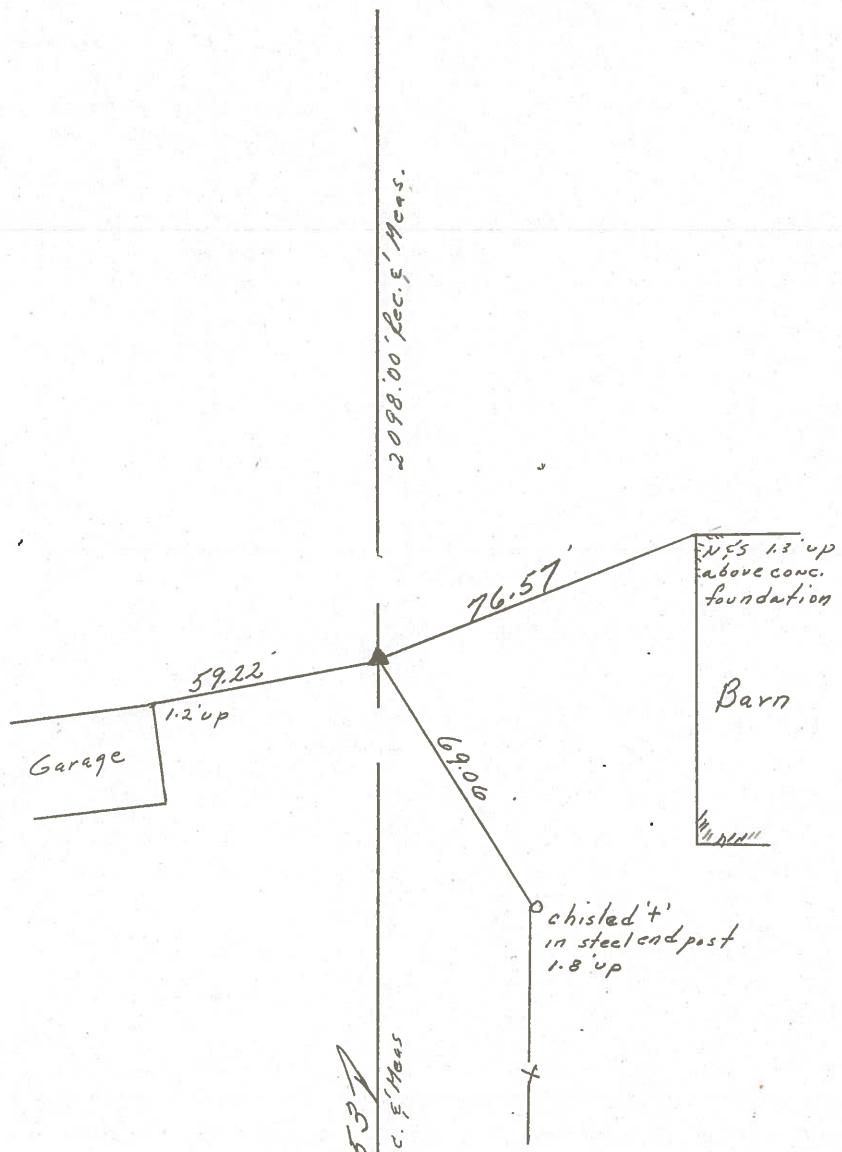
A = 01°00' Lt. Plan & Meas

P.I.

66 + 00

Set P.K. & washer atop boat spike

& washer



S.R./W S.R.#53
765.00 Rec. & Meas

PERSONNEL TITLE PERSONNEL TITLE
 Cronin Schneider
 Ripple Mosser
 Geyman Barboor

COUNTY Seneca DATE 1/6/76
 S. R. # 53 WEATHER sunny-cold
 SEC. I. C. H. # 266 A-2 TEMP. 24°

DESCRIPTION Ties for Control Points LEFT CENTER LINE RIGHT JOB NO.

