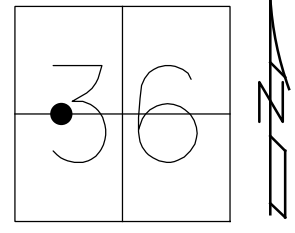


O.D.O.T. DISTRICT 2 SURVEY OFFICE (USE ONLY)

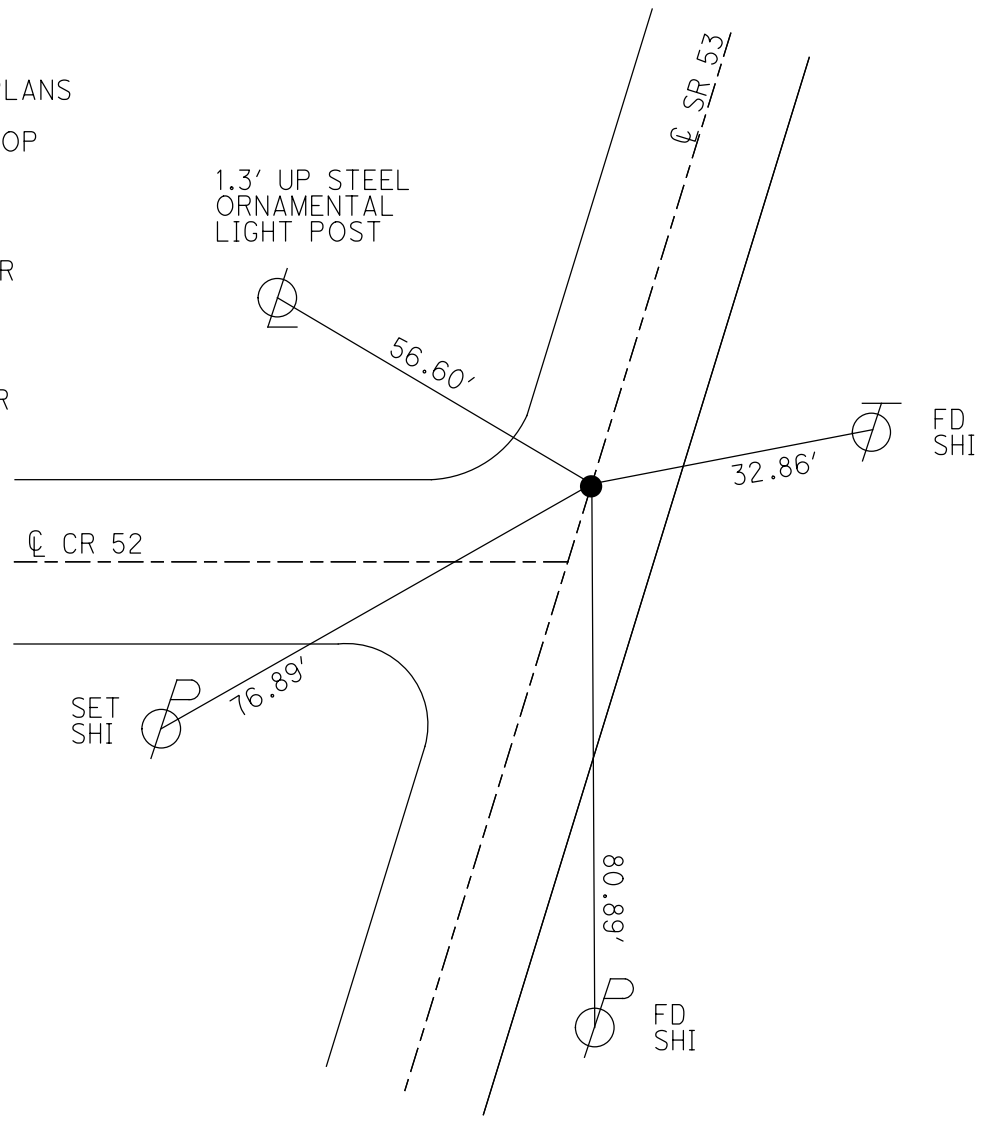
PERSONNEL _____ REFERENCE NO. 30 SHEET 35 OF 47
 NOTES ASTON DATE 9/8/23 ROUTE SR 53
 H.C. NIESE WEATHER DRIZZLE COUNTY SENECA
 R.C. RHOADES TEMP. 66° TOWNSHIP HOPEWELL
 _____ SECTION 36
 DWG BY RHOADES PID R/W T 2 N R 14 E

TYPE MONUMENT MAG/WASHER
 ON SURFACE - ~~BELOW~~ ON
 OFFSET ☉ PAVEMENT ON LT : RT
10.4' TO RT EDGE PAVEMENT
 STATION: 377+71.02



HORIZ.DATUM: NAD83 2011 GEOID: NAVD88 2018
 GRID: NORTHING: 518396.796 EASTING: 1774212.342

RECORD: P.I.
 $\Delta = 00^\circ 52' \text{ LT}$
 $\Delta = 00^\circ 52' \text{ LT PLANS}$
 STA. 86+98
 P.K./WASHER ATOP
 BRONZE PLATE
 6" BELOW
 FD P.K./WASHER
 7/2/97, MC
 SET P.K./WASHER
 10/16/97, MC
 FD P.K./WASHER
 REF30
 4/29/16, JFO
 SET MAG/WASHER
 NEWREF30
 9/7/17, JFO
 FD MAG/WASHER
 REF30
 9/8/23, TDN

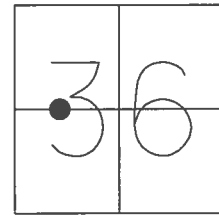


SENECA LPD:
 N: 287065.470
 E: 148919.475

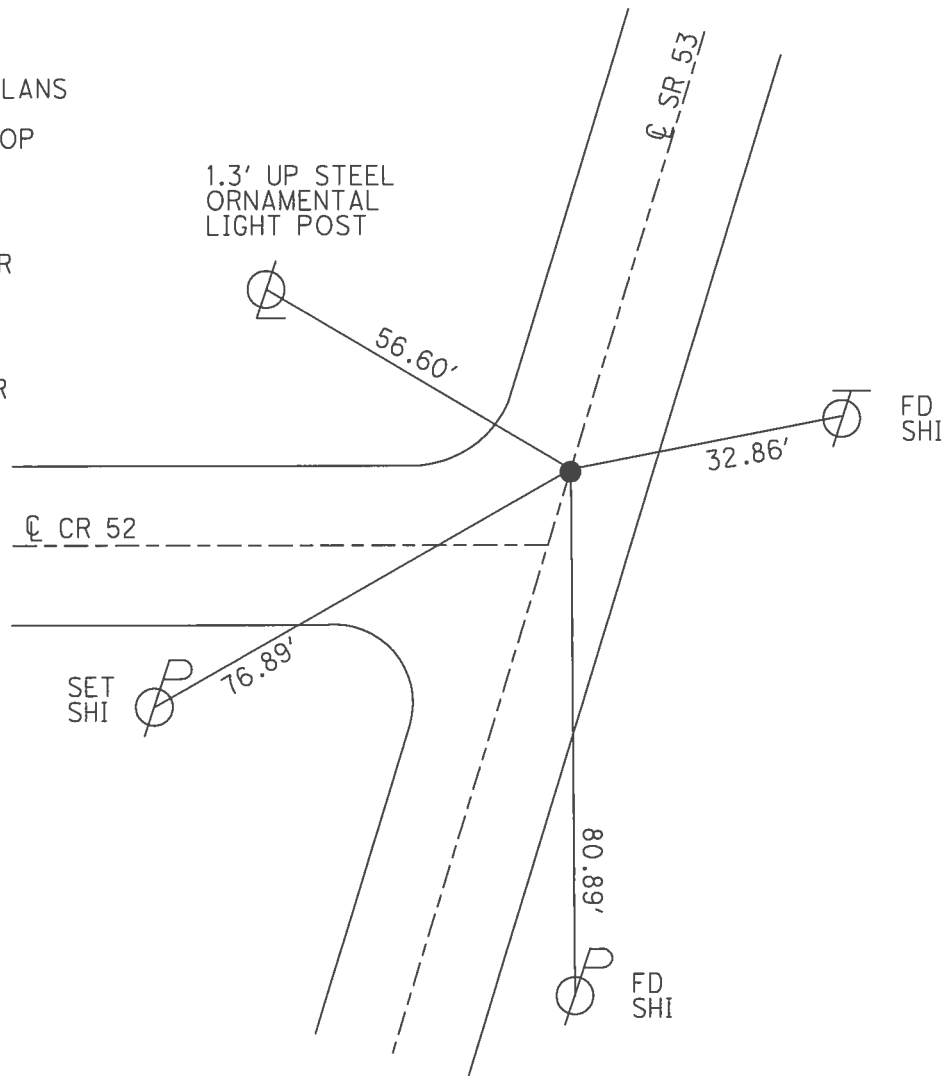
O.D.O.T. DISTRICT 2 SURVEY OFFICE (USE ONLY)

PERSONNEL _____ REFERENCE NO. 30 SHEET 35 OF 41
 NOTES RHOADES DATE 4/20/17 ROUTE SR 53
 H.C. O'DONNELL WEATHER WINDY COUNTY SENECA
 R.C. RHOADES TEMP. 71° TOWNSHIP HOPEWELL
 _____ SECTION 36
 _____ T 2 N R 14 E

TYPE MONUMENT P.K./WASHER
 ON SURFACE - ~~BELOW~~ ON
 LEFT - ☉ PAV'T - RIGHT ON
10.4' TO RT EDGE PAVEMENT
 S.L.M. 377+71.02
 Grid: Northing: 518396.796 Easting: 1774212.342



RECORD: P.I.
 $\Delta = 00^\circ 52' \text{ LT}$
 $\Delta = 00^\circ 52' \text{ LT PLANS}$
 STA. 86+98
 P.K./WASHER ATOP
 BRONZE PLATE
 6" BELOW
 FD P.K./WASHER
 7/2/97, MC
 SET P.K./WASHER
 10/16/97, MC
 FD P.K./WASHER
 REF30
 4/29/16, JFO
 SET MAG/WASHER
 NEWREF30
 9/7/17, JFO



O.D.O.T. DISTRICT 2 SURVEY OFFICE

PERSONNEL

REFERENCE NO. 30

SHEET 30 OF 34

NOTES CANTERBURY

H.C. BARNHISEL

R.C. WEAVER

DATE 7/2/97

WEATHER SUN

TEMP. +79° F

ROUTE #53

COUNTY SENECA

TOWNSHIP HOPEWELL

SECTION 36

T Z N R 14 E

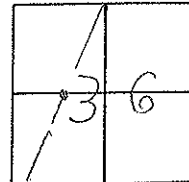
TYPE MONUMENT P.R. + WASHER

ON SURFACE - BELOW SURFACE

LEFT - & PAV'T. - RIGHT ON 9

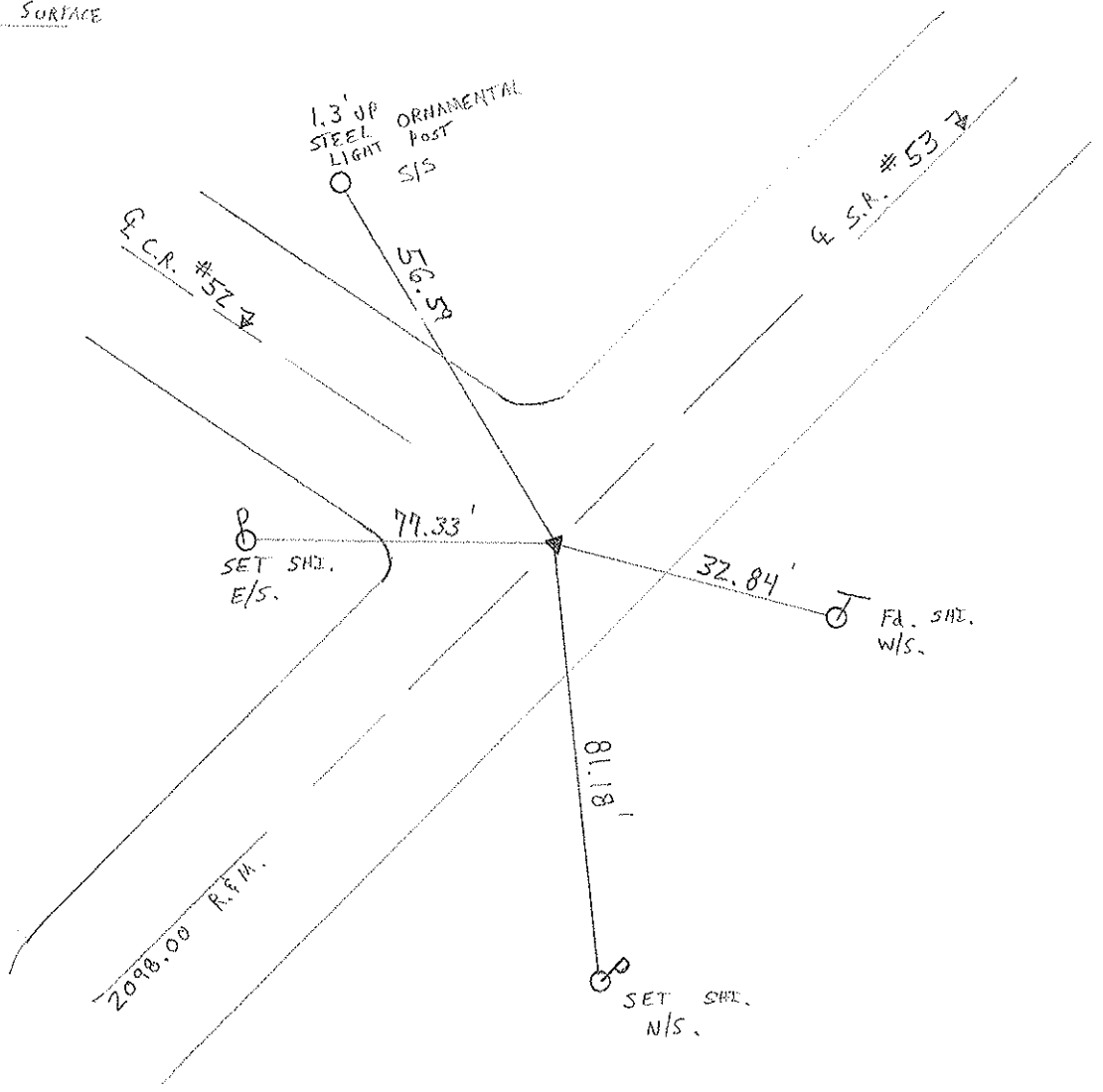
10.4' TO RT. EDGE PAVEMENT

S.L.M. 11 + 551.52



RECORD: P.T. STA 86+98
 $\Delta = 00^\circ 55' \text{ LT}$ & $\Delta = 00^\circ 52' \text{ LT PLANS.}$
 P.R. + WASHER AND BRONZE
 PLATE 6" BELOW SURFACE

RESET P.R. + WASHER
 10/16/97
 M.R.C.



O.D.O.T. DISTRICT 2 SURVEY OFFICE

PERSONNEL

REFERENCE NO. 30

SHEET 30 OF

NOTES CRONIN (DRAW)

DRAWN 11/09/89

H.C. RIPPLE

DATE 12-12-89

ROUTE #53

R.C. BARGOURF (WORK)

WEATHER SUNNY

COUNTY SENECA

GEYMAN

TEMP. 22

TOWNSHIP HOPEWELL

SECTION 36

T 2 N R 14 E

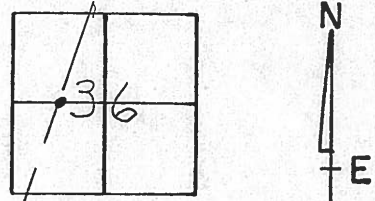
TYPE MONUMENT P.K. Washer

ON SURFACE - BELOW SURFACE

LEFT - ☉ PAV'T. - RIGHT ☉

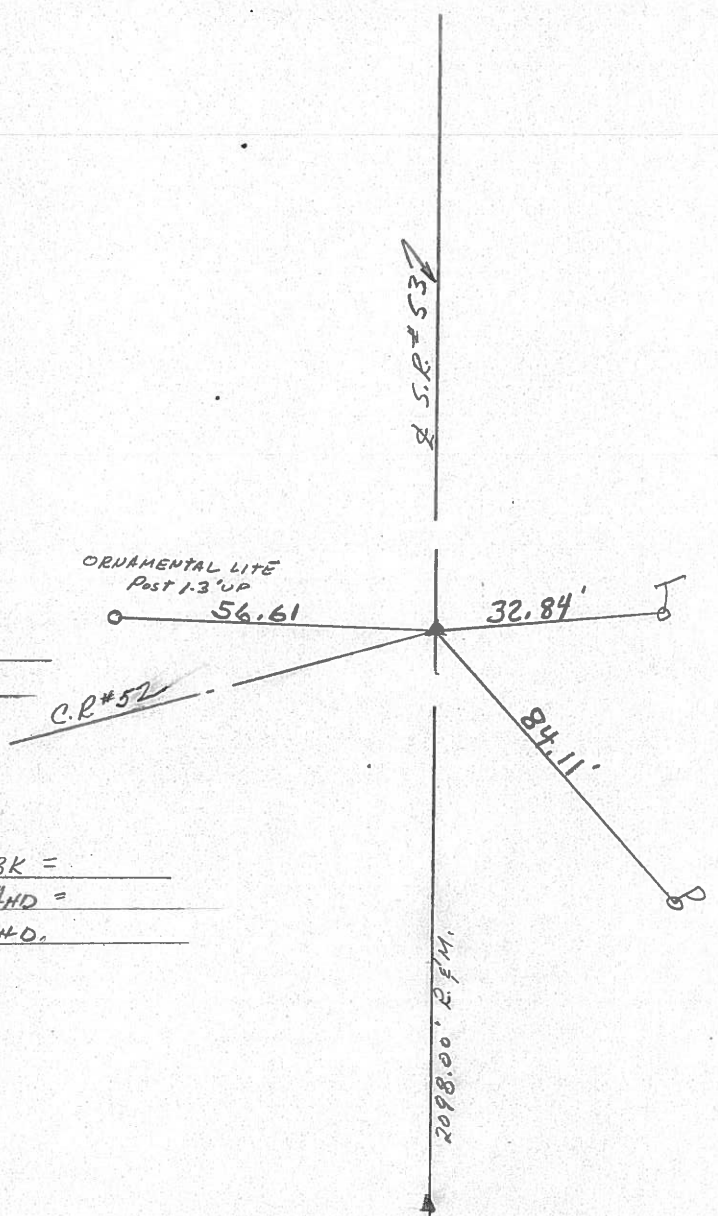
 TO EDGE PAVEMENT

S.L.M. 7.1551



A = 00°55' Lt. ☉
A = 00°52' Lt. PLANS
P.I.
86+98
P.K. Washer ATOP
BRONZE PLATE
6" below SURFACE

86+98 SEC. A-2 BK =
0 + 00 SEC. A-1 AND =
396+97 SEC. A-1 AND.



County Seneca S.R. 53

Township Hopewell

Section 36

T2N, R14E

Personnel Cronin

Ripple

Geyman

Mosser

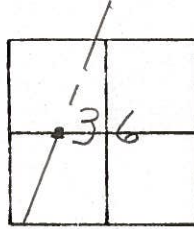
Barbour

#30

Date 8/10/82

Weather sunny

Temp. 60°



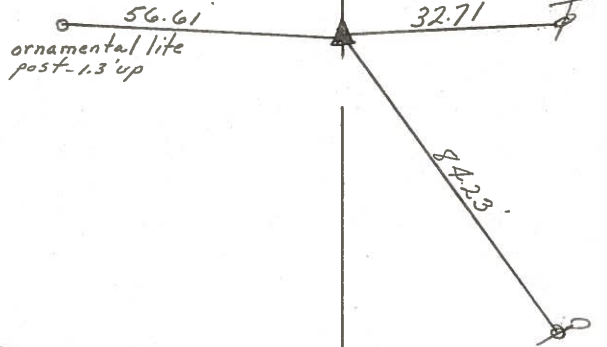
$\pm = 00^{\circ}55' Lt. ; \pm 00^{\circ}52' Lt. Plans$

P.I.

86+98

set P.K. & washer atop

bronze plate 5" below surface



86+98 Sec. A-2 Bk. =
0+00 Sec A-1 Ahd =
396+97 Sec. A-1 Ahd

E R/W S.R. 53
2098.00 Rec. & Meas.

PERSONNEL TITLE PERSONNEL TITLE
 Cronin _____ Schneider _____
 Ripple _____ Mosser _____
 Geyman _____ Barboor _____

COUNTY Seneca

DATE 1/6/76

S. R. # 53

WEATHER sunny - cold

SEC. I. C. H. # 266 A-2

TEMP. 24°

DESCRIPTION Ties for Control Points

JOB NO.

