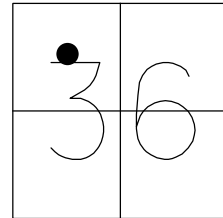


O.D.O.T. DISTRICT 2 SURVEY OFFICE (USE ONLY)

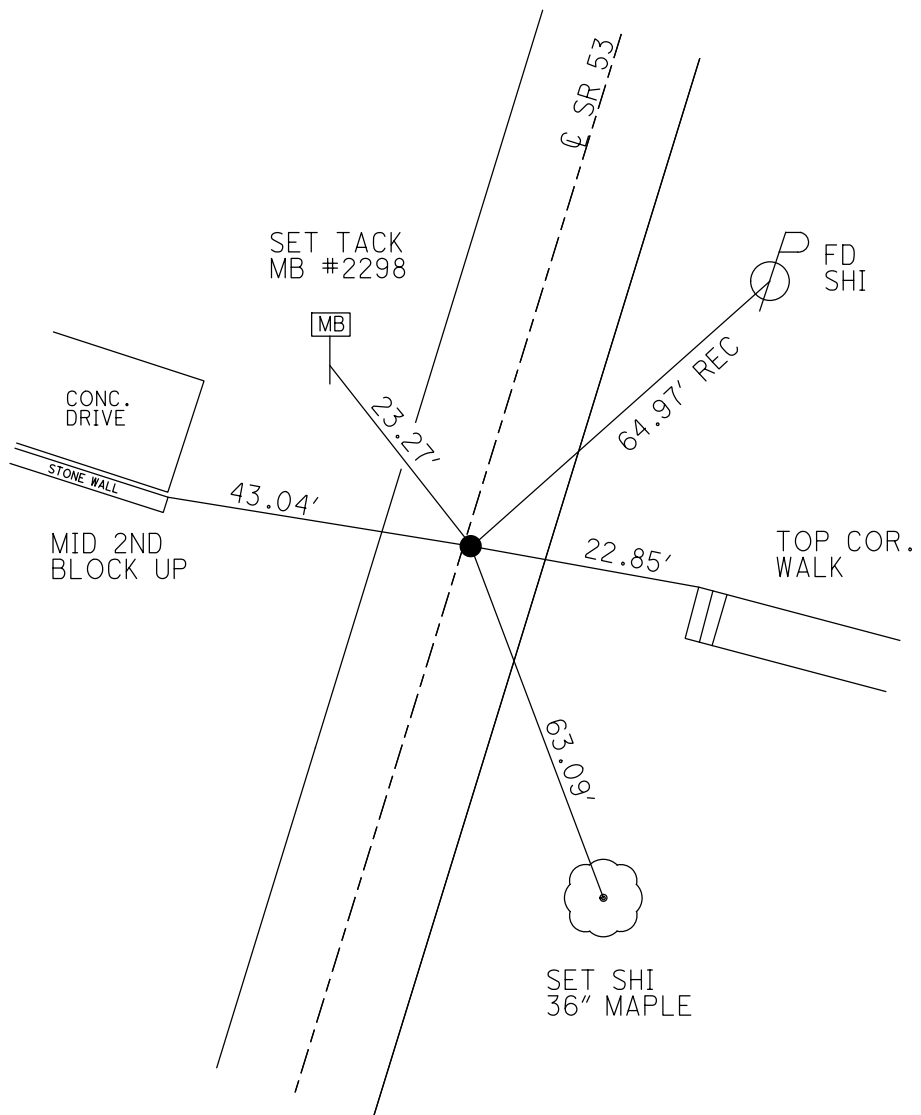
PERSONNEL _____ REFERENCE NO. 31 SHEET 36 OF 47
 NOTES ASTON DATE 9/8/23 ROUTE SR 53
 H.C. NIESE WEATHER DRIZZLE COUNTY SENECA
 R.C. RHOADES TEMP. 66° TOWNSHIP HOPEWELL
 _____ SECTION 36
 DWG BY RHOADES PID R/W T 2 N R 14 E

TYPE MONUMENT MAG/WASHER
 ON SURFACE - ~~BELOW~~ ON
 OFFSET 0.6' LT : RT
TO EDGE PAVEMENT
 STATION: 388+53.58



HORZ.DATUM: NAD83 2011 GEOID: NAVD88 2018
 GRID: NORTHING: 519436.073 EASTING: 1774515.475

RECORD: P.O.T.
 STA. 407+84±
 P.K./WASHER
 1 1/2" BELOW
 FD P.K./WASHER
 7/2/97, MC
 FD P.K./WASHER
 REF31
 4/29/16, JFO
 SET MAG/WASHER
 NEWREF31
 9/7/17, JFO
 FD MAG/WASHER
 REF31
 9/8/23, TDN



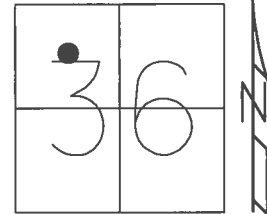
SENECA LPD:
 N: 288107.124
 E: 149219.475

O.D.O.T. DISTRICT 2 SURVEY OFFICE (USE ONLY)

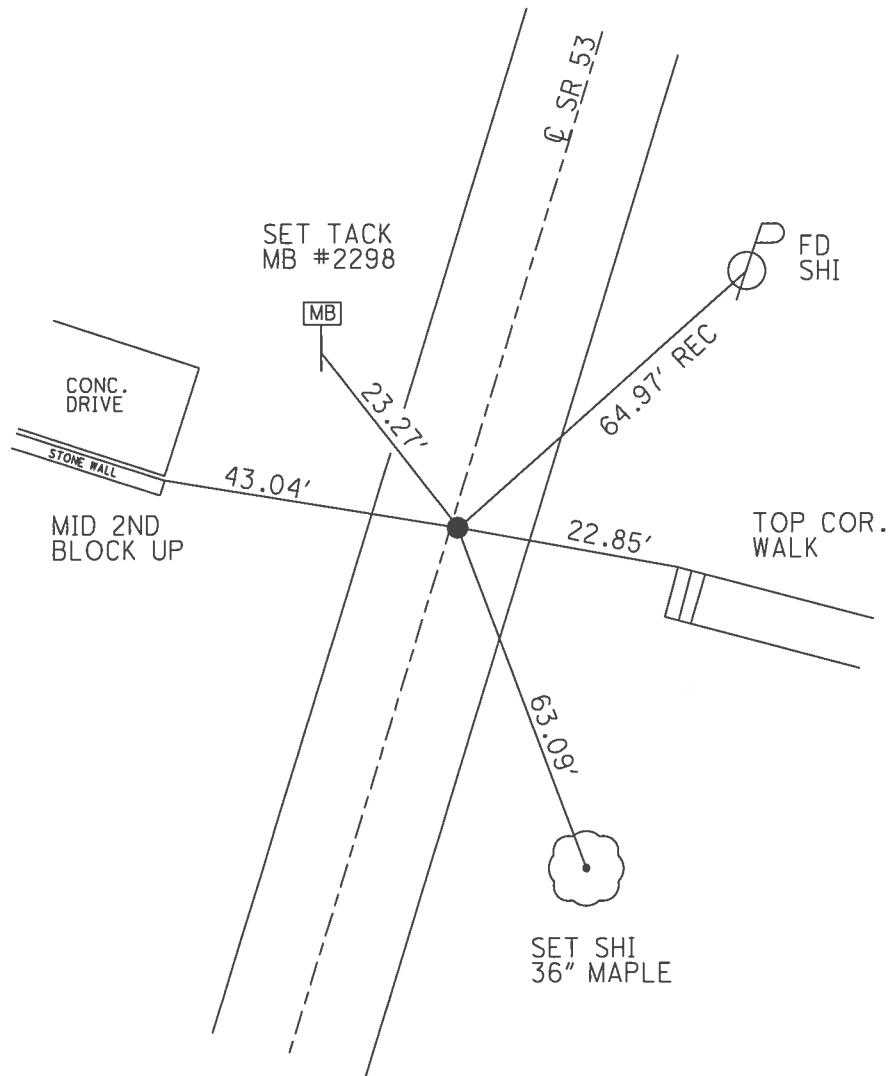
PERSONNEL _____ REFERENCE NO. 31 SHEET 36 OF 41
 NOTES RHOADES DATE 4/20/17 ROUTE SR 53
 H.C. O'DONNELL WEATHER WINDY COUNTY SENECA
 R.C. RHOADES TEMP. 71° TOWNSHIP HOPEWELL
 _____ SECTION 36
 _____ T 2 N R 14 E

TYPE MONUMENT P.K./WASHER
 ON SURFACE - ~~BELOW~~ ON _____
~~LEFT~~ - ℄ PAV'T - RIGHT 0.6'
 - TO - EDGE PAVEMENT
 S.L.M. 388+53.58

Grid: Northing: 519436.073 Easting: 1774515.475



RECORD: P.O.T.
 STA. 407+84±
 P.K./WASHER
 1 1/2" BELOW
 FD P.K./WASHER
 7/2/97, MC
 FD P.K./WASHER
 REF31
 4/29/16, JFO
 SET MAG/WASHER
 NEWREF31
 9/7/17, JFO



O.D.O.T. DISTRICT 2 SURVEY OFFICE

PERSONNEL _____

REFERENCE NO. 31

SHEET 31 OF 34

NOTES CANTONMENT

H.C. BALTIMORE

R.C. WASHER

DATE 7-2-97

WEATHER SUNNY

TEMP. 79°

ROUTE SR 53

COUNTY SEXIECA

TOWNSHIP HODEVELL

SECTION 36

T 2 N R 14 E

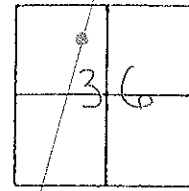
TYPE MONUMENT PK/WASHER

ON SURFACE - BELOW YES

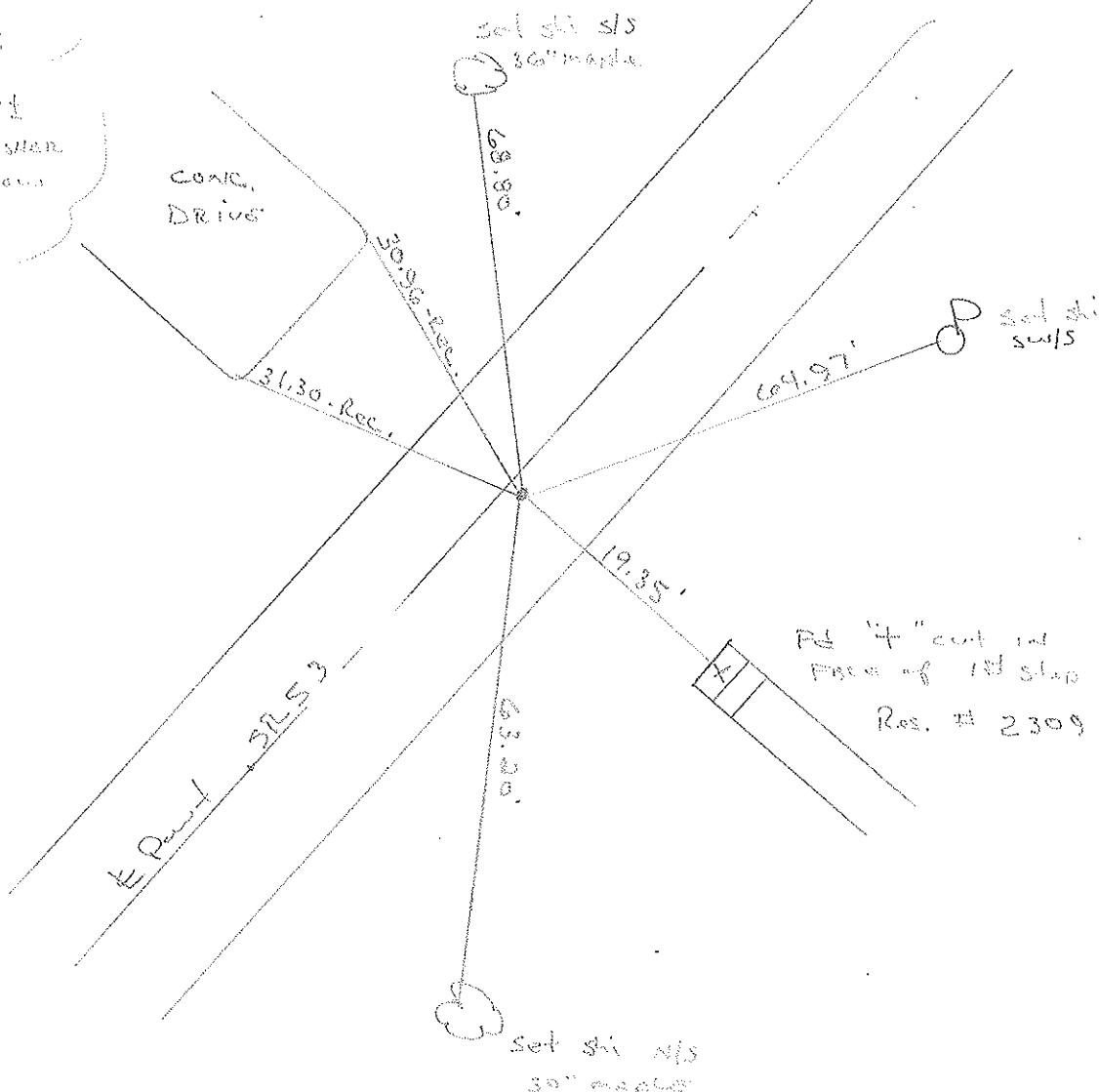
LEFT - 0 PAV'T. - RIGHT 0.6

TO EDGE PAVEMENT

S.L.M. 11 + 882.32



RECORD:
P.O.T.
4074841
P.K. WASHER
1 1/2' below



O.D.O.T. DISTRICT 2 SURVEY OFFICE

PERSONNEL

REFERENCE NO. 31

SHEET 31 OF

NOTES CANTERBURY

H.C. BARNHISEL

R.C. WEAVER

DATE 7/2/97

WEATHER SUN

TEMP. +79°

ROUTE #53

COUNTY SENECA

TOWNSHIP HOPEWELL

SECTION 36

T.Z. NR 14 E

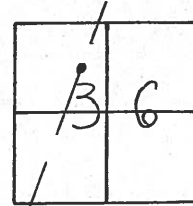
TYPE MONUMENT P.K. + WASHER

ON SURFACE - ~~BELOW~~ ON SURFACE

~~LEFT - C PAV'T.~~ - RIGHT O.6" RT ♀

9.8' TO RT EDGE PAVEMENT

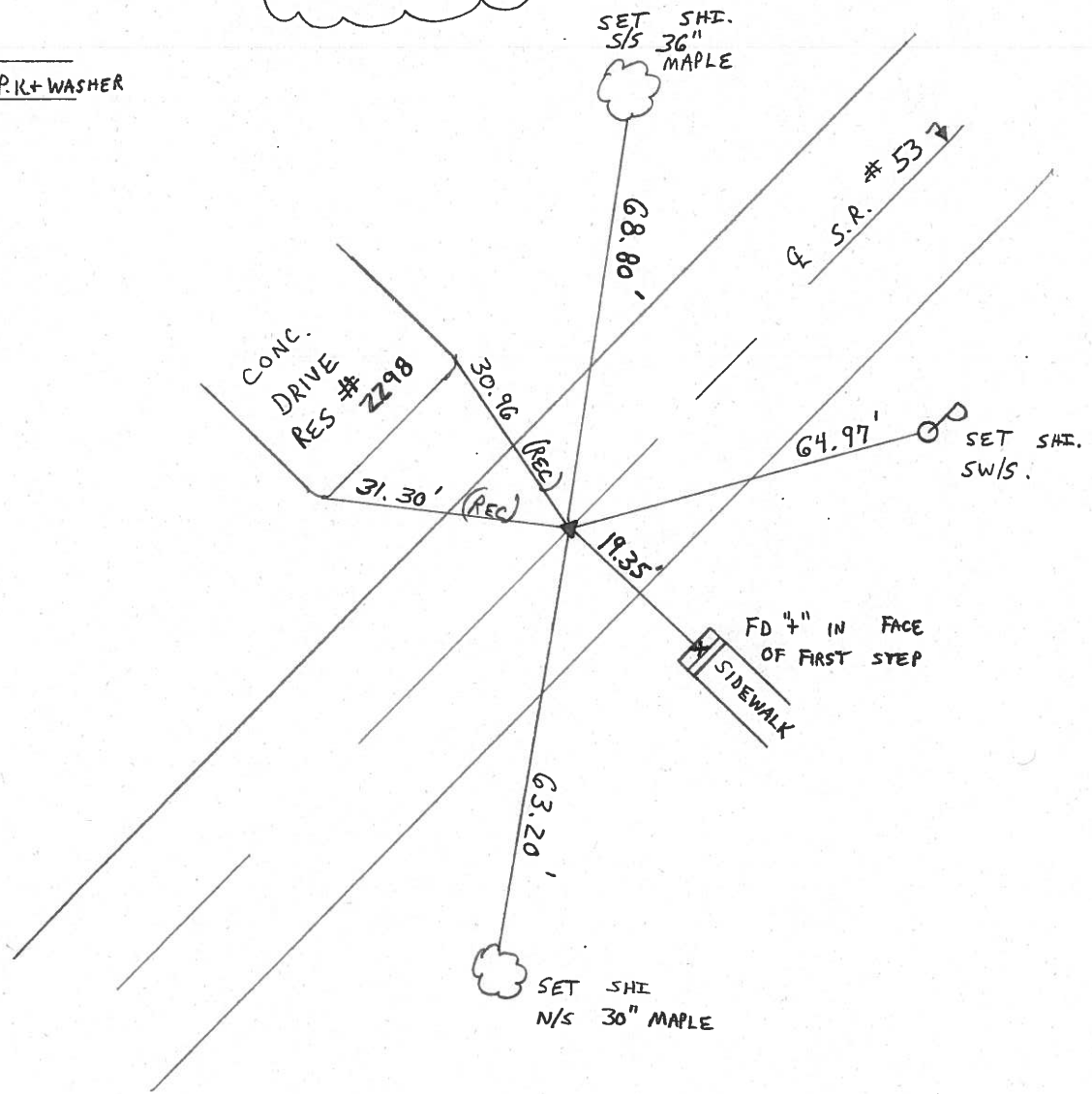
S.L.M. 11 + 882.32



RESET P.K. + WASHER
 10-17-97
 M.R.C.

RECORD: P.O.T

STA 407+84± P.K.+WASHER



O.D.O.T. DISTRICT 2 SURVEY OFFICE

PERSONNEL

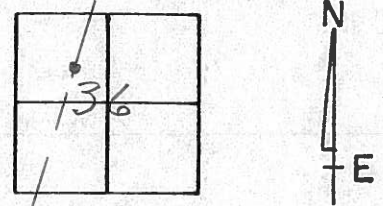
NOTES CROWIN (DRAW)
 H.C. RIPPLE
 R.C. BARBOUR WORK
GEYMAN

REFERENCE NO. 31
 DRAWN 11/09/89
 DATE 12-12-89
 WEATHER SUNNY
 TEMP. 22°

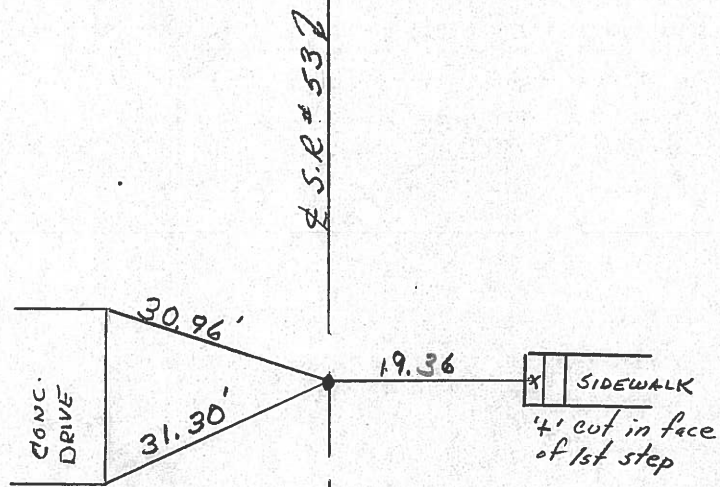
SHEET 31 OF

ROUTE # 53
 COUNTY SENECA
 TOWNSHIP HOPWELL
 SECTION 36
T 2 N R 14 E

TYPE MONUMENT P.K. Washer
 ON SURFACE - BELOW 1 1/2" below surface
 LEFT-☉ PAV'T. - RIGHT ☉
 TO EDGE PAVEMENT
 S.L.M. 7.7242



P.O.T
407+84±
P.K. Washer
1 1/2" Below Surface



O.D.O.T. DISTRICT 2 SURVEY OFFICE

SHEET

OF

County Seneca S.R. 53

Date 8/10/82

Township Hopewell

Weather sunny

Section 36

Temp. 65°

T2N, R14E

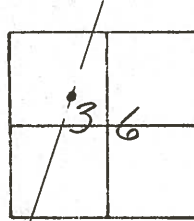
Personnel Cronin

Ripple

Geyman

Messer

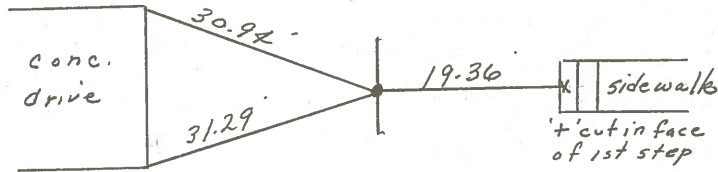
Barbour



#31



P.O.T
407+84t
set P.K., washer a top boat
spike, washer



PERSONNEL TITLE PERSONNEL TITLE

Cronin Schneider
Ripple Mosser
Geyman Barbour

COUNTY Seneca

DATE 1/6/76

S. R. #53

WEATHER sunny-cold

Field Bk. #103

SEC. I.C.H. 266 - A-1

TEMP. 26°

DESCRIPTION Ties for Control Points

JOB NO.

LEFT

CENTER LINE

RIGHT

Hopewell Township

Section 25

32

$\Delta = 09^{\circ}48'$ Pt. Plan

P.I.

425+52.87

Found bronze plate

3" below surface

7.0' \pm Lt. of pavement

'x' cut top
step of wing wall
to bridge

Bridge
Sen. 53
0768

'x' cut top & top
of wing wall to bridge

Section 25

Section 36

31

P.O.T.

407+84 \pm

set small square

spike & washer

conc
Drivc

'x' cut in face
of 1st step

Section 36