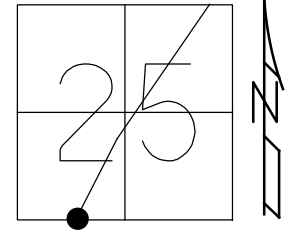


O.D.O.T. DISTRICT 2 SURVEY OFFICE (USE ONLY)

PERSONNEL _____ REFERENCE NO. 32 SHEET 38 OF 47
 NOTES ASTON DATE 9/8/23 ROUTE SR 53
 H.C. NIESE WEATHER DRIZZLE COUNTY SENECA
 R.C. RHOADES TEMP. 66° TOWNSHIP HOPEWELL
 DWG BY RHOADES PID R/W SECTION 25
 T 2 N R 14 E

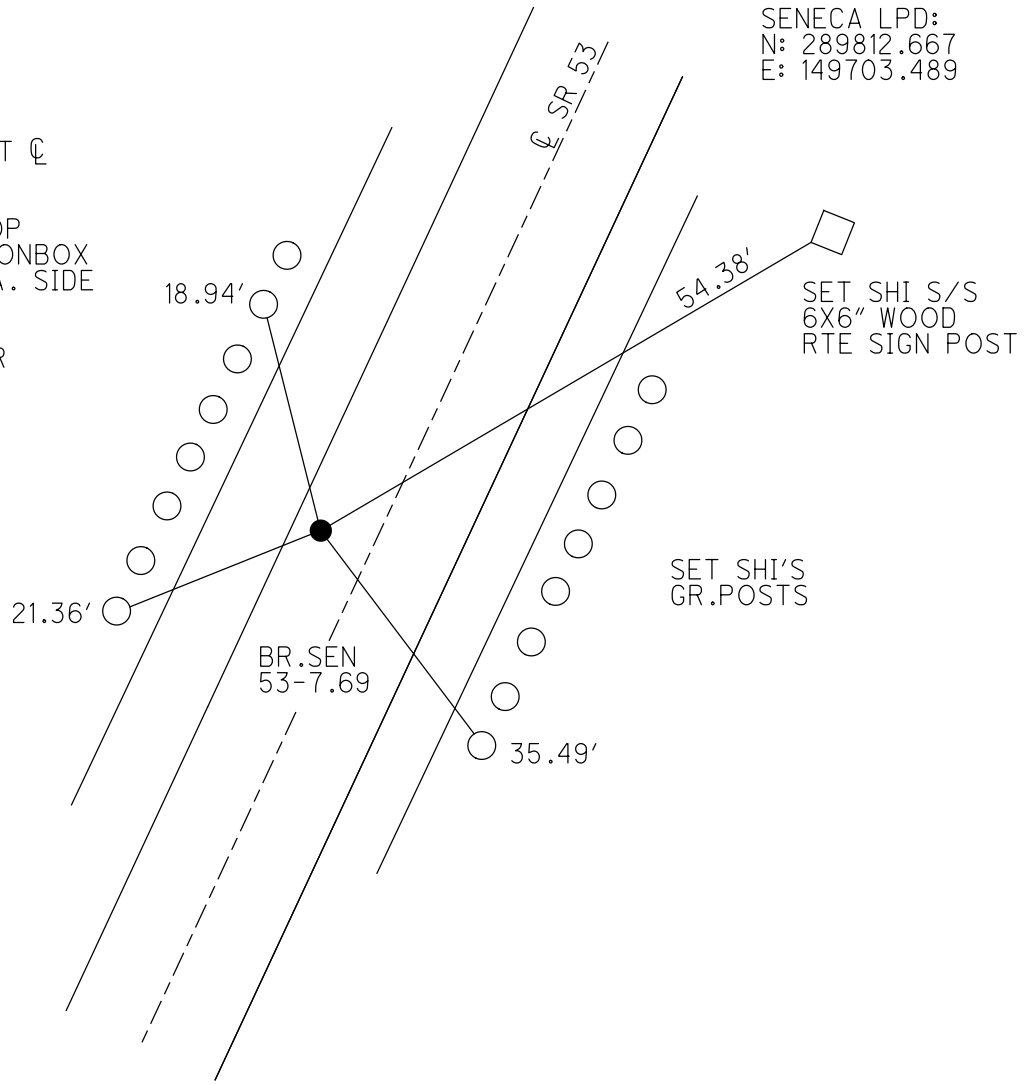
TYPE MONUMENT MAG/WASHER
 ON SURFACE - ~~BELOW~~ ON
 OFFSET ☉ PAVEMENT 7.9' LT : ~~RT~~
4.8' TO LT EDGE PAVEMENT
 STATION: 406+26.32



HORIZ.DATUM: NAD83 2011 GEOID: NAVD88 2018
 GRID: NORTHING: 521137.810 EASTING: 1775012.172

RECORD: P.I.
 Δ= 09°48' RT
 STA. 425+52.87
 MONBOX W/
 BRONZE PLATE
 IN CONC.@ 7'± LT ☉
 FD MONBOX
 7/2/97, MC
 FD P.K.NAIL ATOP
 MID POINT OF MONBOX
 W/STRATLERS EA. SIDE
 REF32
 5/3/16, JFO
 SET MAG/WASHER
 NEWREF32
 9/7/17, JFO
 FD MAG/WASHER
 REF32
 9/8/23, TDN

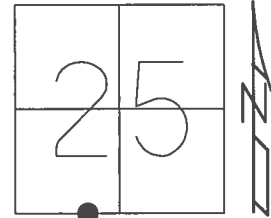
SENECA LPD:
 N: 289812.667
 E: 149703.489



O.D.O.T. DISTRICT 2 SURVEY OFFICE (USE ONLY)

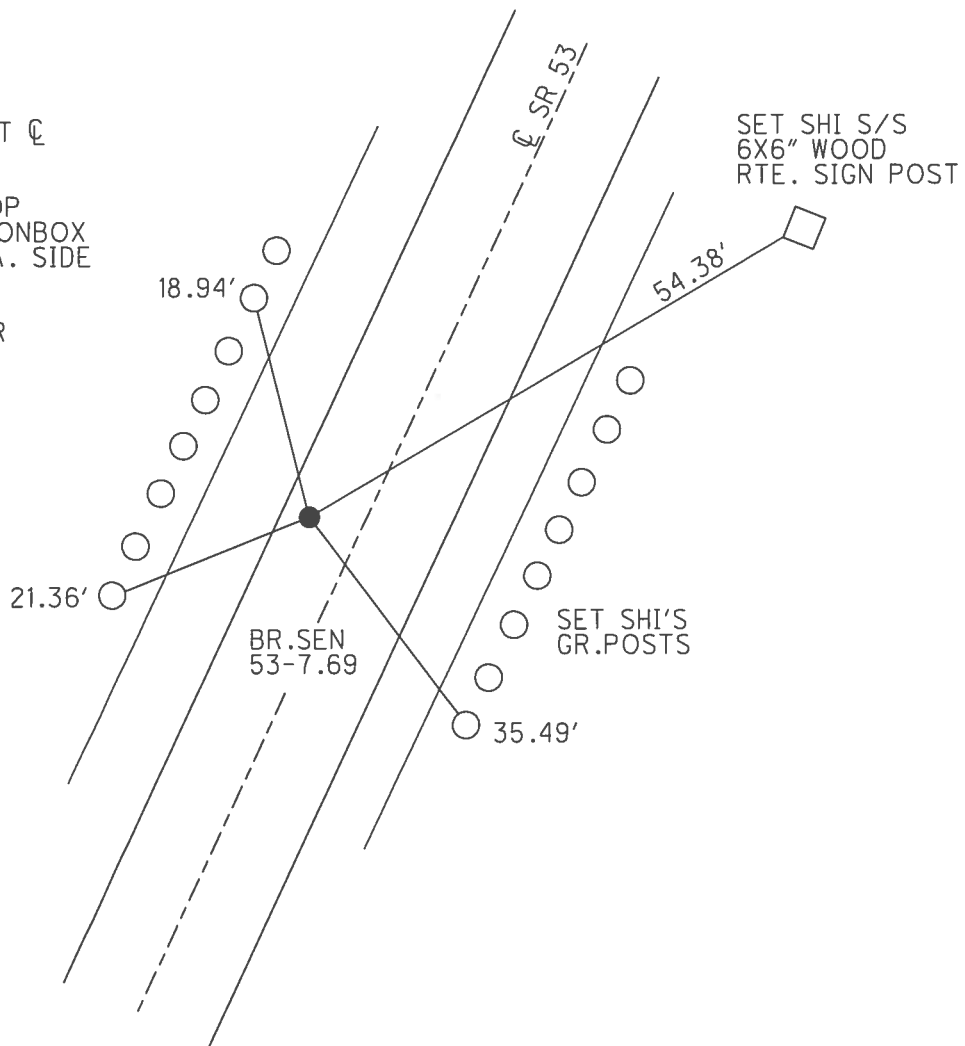
PERSONNEL _____ REFERENCE NO. 32 SHEET 37 OF 41
 NOTES RHOADES DATE 4/20/17 ROUTE SR 53
 H.C. O'DONNELL WEATHER WINDY COUNTY SENECA
 R.C. RHOADES TEMP. 71° TOWNSHIP HOPEWELL
 _____ SECTION 25
 _____ T 2 N R 14 E

TYPE MONUMENT P.K.NAIL
 ON SURFACE - ~~BELOW~~ ON _____
 LEFT - ☉ PAV'T - ~~RIGHT~~ 7.9'
4.8' TO LT EDGE PAVEMENT
 S.L.M. 406+26.32



Grid: Northing: 521137.810 Easting: 1775012.172

RECORD: P.I.
 $\Delta = 09^\circ 48' \text{ RT}$
 STA. 425+52.87
 MONBOX W/
 BRONZE PLATE
 IN CONC. @ 7'± LT ☉
 FD MONBOX
 7/2/97, MC
 FD P.K.NAIL ATOP
 MID POINT OF MONBOX
 W/STRATLERS EA. SIDE
 REF32
 5/3/16, JFO
 SET MAG/WASHER
 NEWREF32
 9/7/17, JFO



O.D.O.T. DISTRICT 2 SURVEY OFFICE

PERSONNEL _____

REFERENCE NO. 32

SHEET 32 OF 34

NOTES CANTERBURY

H.C. BARNHISEL

R.C. WEAVER

DATE 7/2/97

WEATHER SUN

TEMP. +79°

ROUTE #53

COUNTY SENECA

TOWNSHIP HOPEWELL

SECTION 25

T Z N R 14 E

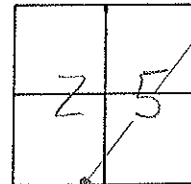
TYPE MONUMENT MON BOX

ON SURFACE - BELOW SURFACE

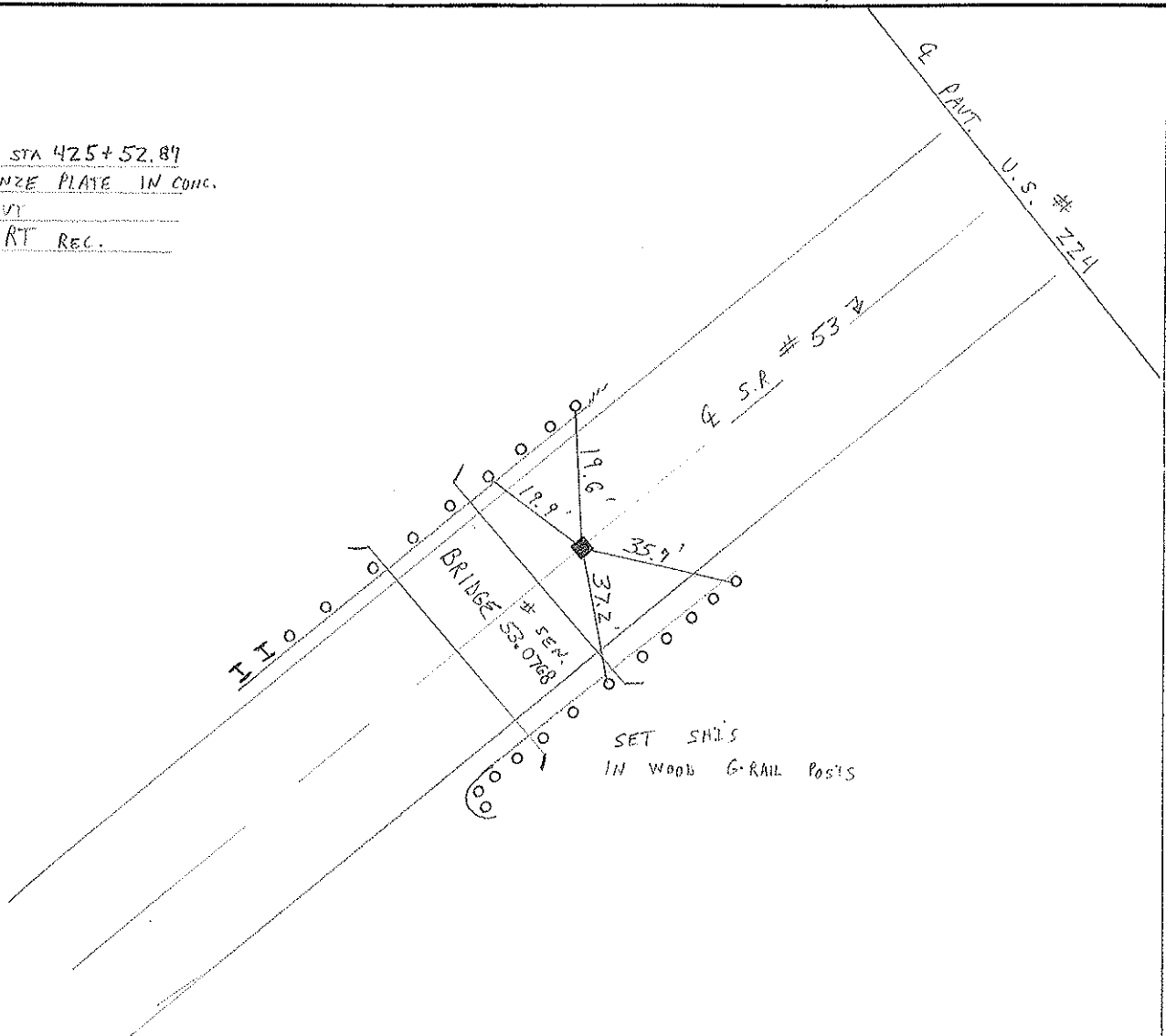
LEFT- & PAV'T. - RIGHT 7.9' LT &

4.8' TO LT EDGE PAVEMENT

S.L.M. 12 + 413.72



RECORD: P.I. STA 425+52.87
 MON BOX - BRONZE PLATE IN CONC.
 7'± LT & PAVT
 Δ = 09° 48' RT REC.



O.D.O.T. DISTRICT 2 SURVEY OFFICE

PERSONNEL

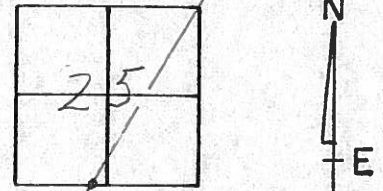
NOTES ORONIN (DRAW)
H.C. RYPPLE
R.C. BARBOUR
GEYMAN

REFERENCE NO. 32
DRAWN 11/09/89
DATE 12-12-89
WEATHER SUNNY
TEMP. 22°

SHEET 32 OF

ROUTE #53
COUNTY SENECA
TOWNSHIP HOPEWELL
SECTION 25
T 2 N R 14 E

TYPE MONUMENT MONUMENT BOX
ON SURFACE - BELOW SURFACE
LEFT - & PAV'T. - RIGHT 7' LT. &
 TO EDGE PAVEMENT
S.L.M. 8.0593



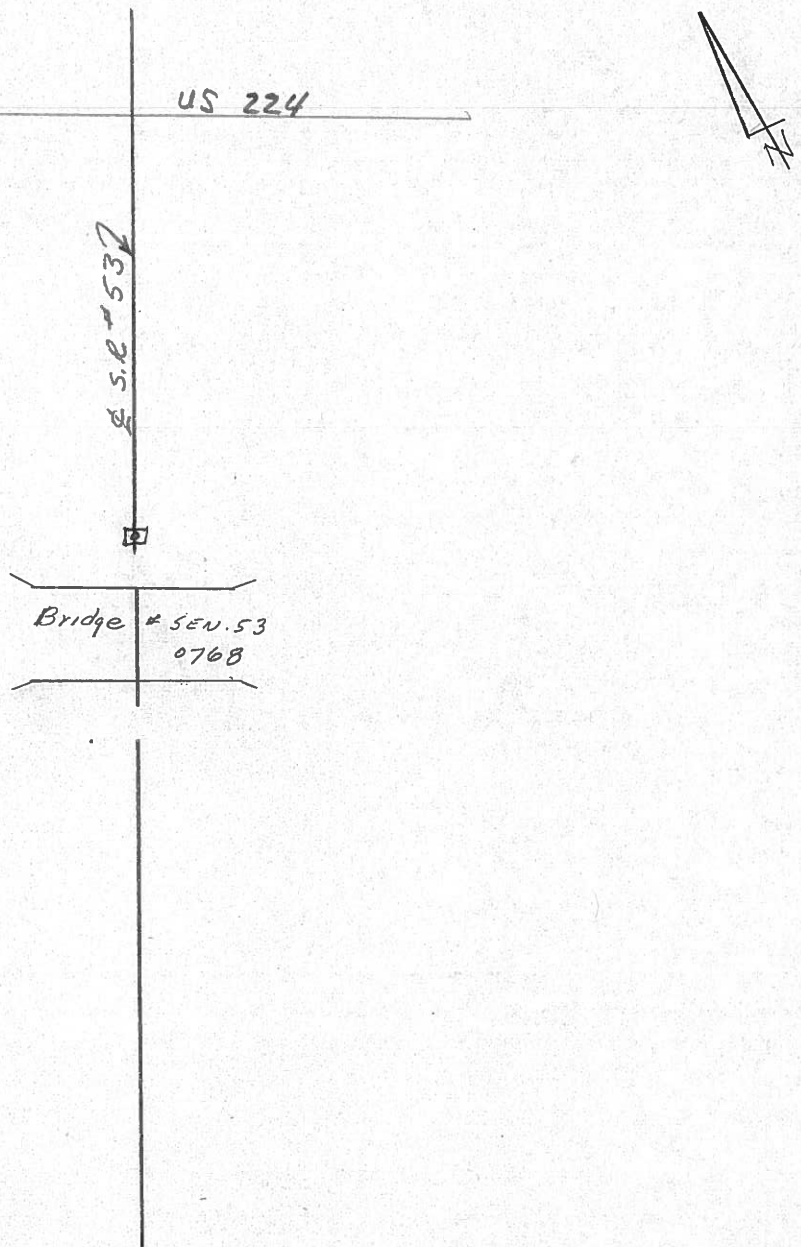
$\Delta = 09^{\circ}48'$ Rt. Rec.

P.I.

725+52.87

Mon. Box - BRONZE PLATE

IN CONC. 7' E LT. & P.V.T



± S.L.M. # 537

Bridge # SEN. 53
0768

O.D.O.T. DISTRICT 2 SURVEY OFFICE

SHEET

OF

County Seneca S.R. #53

Date 8/10/82

Township Hopewell

Weather sunny

Section 25

Temp. 65°

T2N, R14E

Personnel Cronin

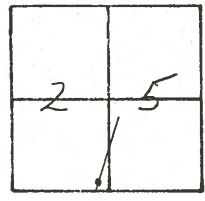
Ripple

Geyman

Mosser

Barbour

#32



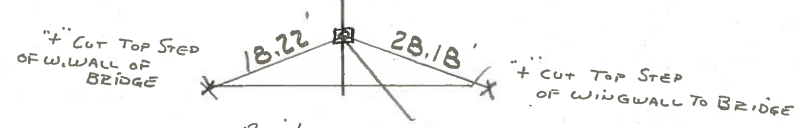
1=09°48' Rt. Plan

P.I.

425+52.87

Man. Box - Bronze Plate

7± Lt. & Pavement



Bridge Sen. 53
0768



R.P./W S.R. #53

PERSONNEL	TITLE	PERSONNEL	TITLE
Cronin		Schneider	
Ripple		Mosser	
Geyman		Barbour	

COUNTY Seneca

DATE 1/6/76

S. R. # 53

WEATHER sunny-cold

Field Bk. # 103

SEC. I.C.H. 266 - A-1

TEMP. 26°

DESCRIPTION Ties for Control Points

JOB NO.

