

O.D.O.T. DISTRICT 2 SURVEY OFFICE (USE ONLY)

PERSONNEL

REFERENCE NO. 33

SHEET 41 OF 47

NOTES ASTON

DATE 9/8/23

ROUTE SR 53

H.C. NIESE

WEATHER DRIZZLE

COUNTY SENECA

R.C. RHOADES

TEMP. 66°

TOWNSHIP HOPEWELL

SECTION 25

DWG BY RHOADES

PID R/W

T 2 N R 14 E

TYPE MONUMENT MAG/WASHER

ON SURFACE - ~~BELOW~~ ON

OFFSET  $\text{C}$  PAVEMENT 8.9' LT : ~~RT~~

2.5' TO LT EDGE PAVEMENT

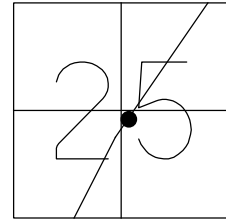
STATION: 422+73.95

HORZ.DATUM: NAD83 2011

GEOID: NAVD88 2018

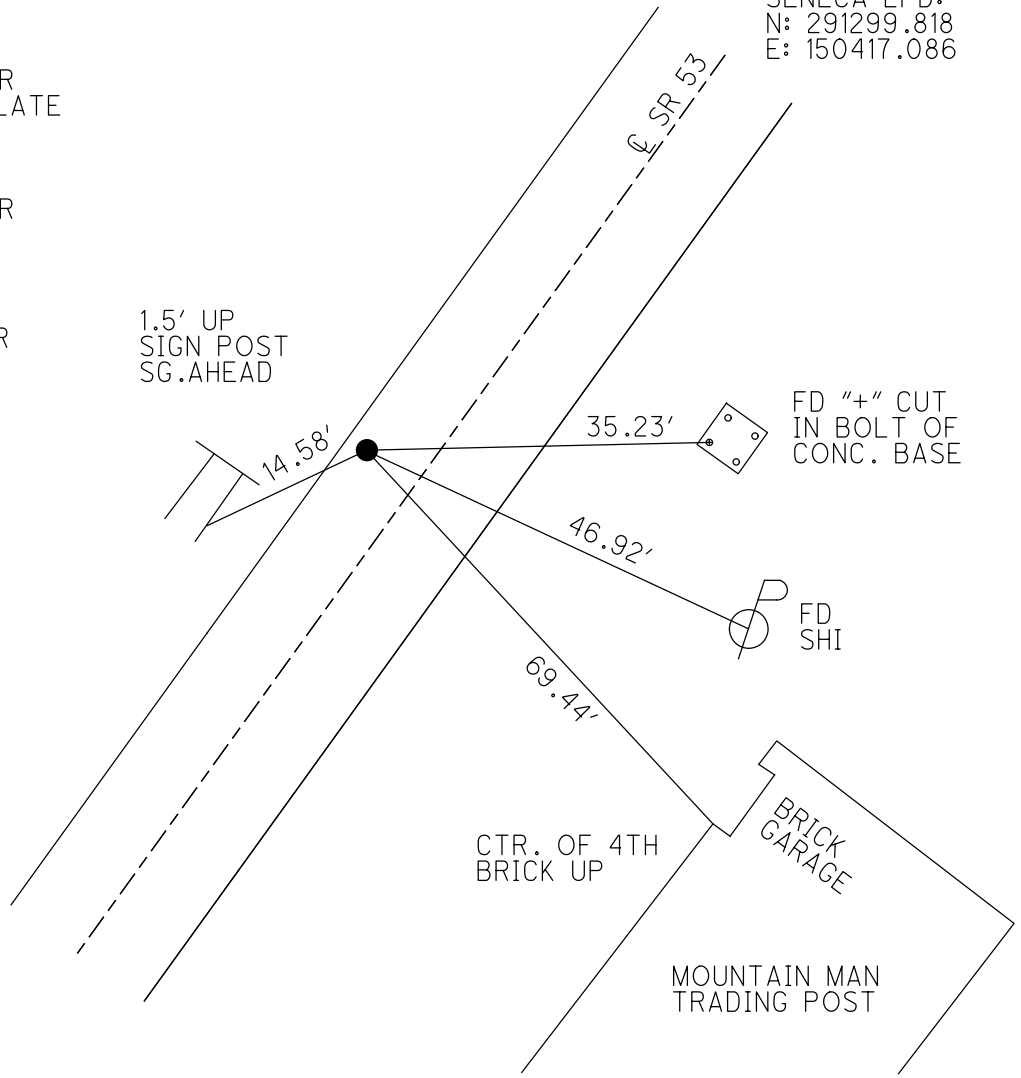
GRID: NORTHING: 522619.443

EASTING: 1775736.820



RECORD: P.I.  
 $\Delta = 08^\circ 49' \text{ RT}$   
 STA. 442+02.40  
 SET P.K./WASHER  
 ATOP BRONZE PLATE  
 5" DOWN  
 FD P.K./WASHER  
 7/2/97, MC  
 SET P.K./WASHER  
 10/17/97, KPM  
 FD P.K./WASHER  
 REF33  
 4/29/16, JFO  
 SET MAG/WASHER  
 NEWREF33  
 9/7/17, JFO  
 FD MAG/WASHER  
 CKREF33  
 4/17/19, JFO  
 FD MAG/WASHER  
 REF33  
 7/21/21, DSA  
 FD MAG/WASHER  
 REF33  
 9/8/23, TDN

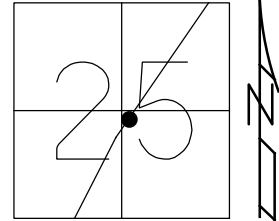
SENECA LPD:  
 N: 291299.818  
 E: 150417.086



O.D.O.T. DISTRICT 2 SURVEY OFFICE (USE ONLY)

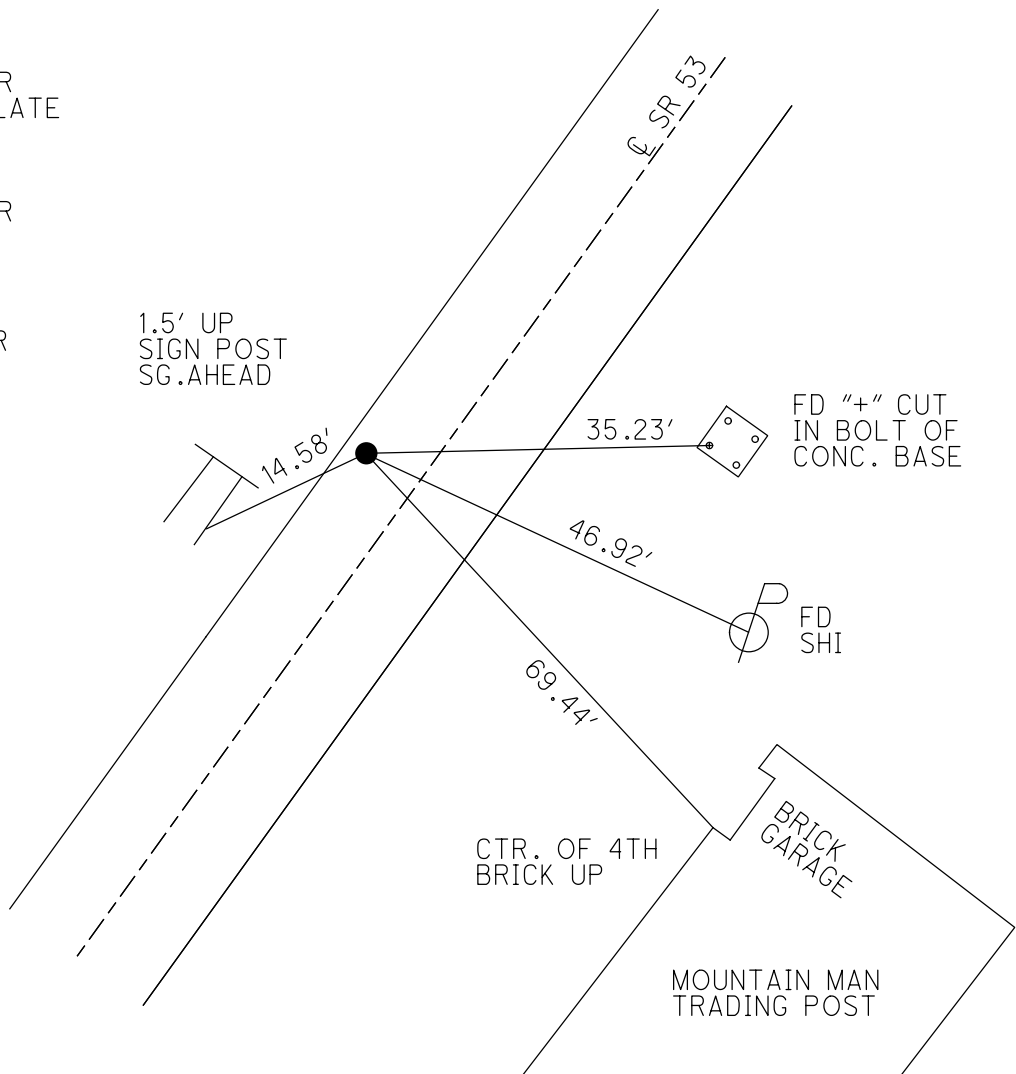
PERSONNEL \_\_\_\_\_ REFERENCE NO. 33 SHEET 39 OF 47  
 NOTES NIESE DATE 7/21/21 ROUTE SR 53  
 H.C. AUBLE WEATHER PTLY CLOUDY COUNTY SENECA  
 R.C. NIESE TEMP. 68° TOWNSHIP HOPEWELL  
 SECTION 25  
 DWG BY WHITAKER PID 95778 T 2 N R 14 E

TYPE MONUMENT MAG/WASHER  
 ON SURFACE - ~~BELOW~~ ON  
 OFFSET  $\text{\textcircled{C}}$  PAVEMENT 8.9' LT : ~~RT~~  
2.5' TO LT EDGE PAVEMENT  
 STATION: 422+73.95



HORZ.DATUM: NAD83(2011) GEOID: 2012A  
 GRID: NORTHING: 522619.443 EASTING: 1775736.820

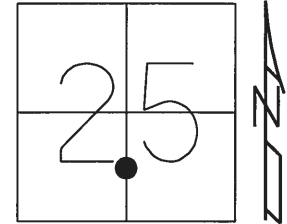
RECORD: P.I.  
 $\Delta = 08^\circ 49' \text{ RT}$   
 STA. 442+02.40  
 SET P.K./WASHER  
 ATOP BRONZE PLATE  
 5" DOWN  
 FD P.K./WASHER  
 7/2/97, MC  
 SET P.K./WASHER  
 10/17/97, KPM  
 FD P.K./WASHER  
 REF33  
 4/29/16, JFO  
 SET MAG/WASHER  
 NEWREF33  
 9/7/17, JFO  
 FD MAG/WASHER  
 CKREF33  
 4/17/19, JFO  
 FD MAG/WASHER  
 REF33  
 7/21/21, DSA



O.D.O.T. DISTRICT 2 SURVEY OFFICE (USE ONLY)

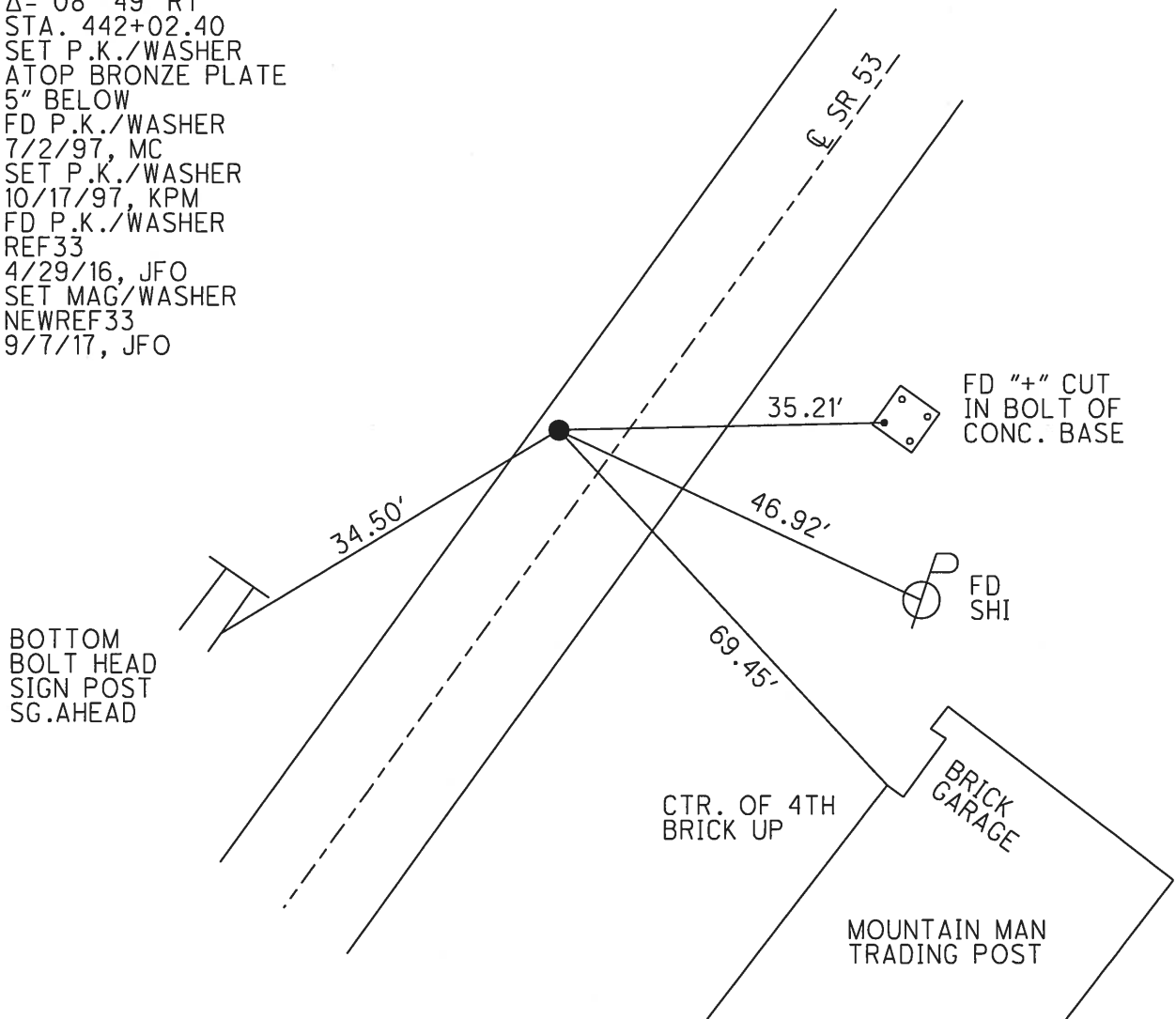
PERSONNEL \_\_\_\_\_ REFERENCE NO. 33 SHEET 39 OF 41  
 NOTES RHOADES DATE 4/20/17 ROUTE SR 53  
 H.C. O'DONNELL WEATHER WINDY COUNTY SENECA  
 R.C. RHOADES TEMP. 62° TOWNSHIP HOPEWELL  
 \_\_\_\_\_ SECTION 25  
 \_\_\_\_\_ T 2 N R 14 E

TYPE MONUMENT P.K./WASHER  
 ON SURFACE - ~~BELOW~~ ON \_\_\_\_\_  
 LEFT - ☉ PAV'T - ~~RIGHT~~ 8.9'  
2.5' TO LT EDGE PAVEMENT  
 S.L.M. 422+74.90



Grid: Northing: 522619.443 Easting: 1775736.820

RECORD: P.I.  
 $\Delta = 08^\circ 49' RT$   
 STA. 442+02.40  
 SET P.K./WASHER  
 ATOP BRONZE PLATE  
 5" BELOW  
 FD P.K./WASHER  
 7/2/97, MC  
 SET P.K./WASHER  
 10/17/97, KPM  
 FD P.K./WASHER  
 REF33  
 4/29/16, JFO  
 SET MAG/WASHER  
 NEWREF33  
 9/7/17, JFO



# O.D.O.T. DISTRICT 2 SURVEY OFFICE

PERSONNEL

REFERENCE NO. 33

SHEET 33 OF 34

NOTES Cartography

H.C. Barnwell

R.C. Wagner

DATE 7-2-97

WEATHER Sunny

TEMP. 82°

ROUTE #53

COUNTY SENECA

TOWNSHIP HOPEWELL

SECTION 25

T2 NR 14 E

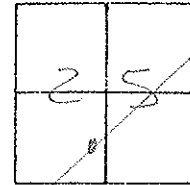
TYPE MONUMENT P.K./washer

ON SURFACE - BELOW yes

LEFT- & PAV'T. - RIGHT 8.9

4.1 TO LT. EDGE PAVEMENT

S.L.M. 12 + 925.31



Re-set P.K./washer  
10-17-97 CAM

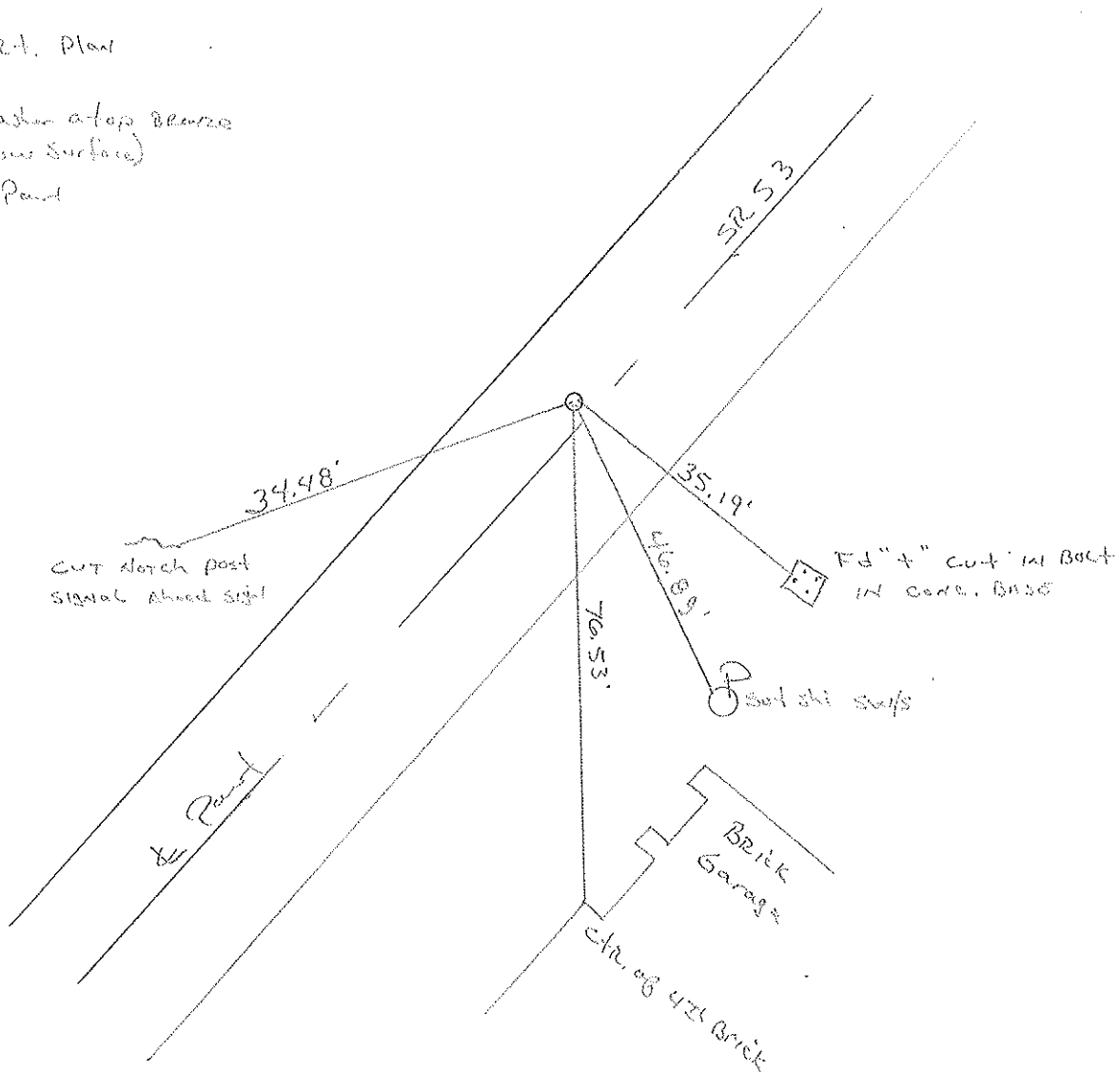
Records:

P.I. 8° 47' R+L Plan

4422 02.90

Set P.K. washer atop bronze  
plate (5" below surface)

8.5' Lt & Paint



# O.D.O.T. DISTRICT 2 SURVEY OFFICE

PERSONNEL

REFERENCE NO. 33

SHEET 33 OF     

NOTES CANTERBURY

H.C. BARNHISEL

R.C. WEAVER

DATE 7/2/97

WEATHER SUN

TEMP. +82°

ROUTE # 53

COUNTY SENECA

TOWNSHIP HOPEWELL

SECTION 25

T Z N R 14 E

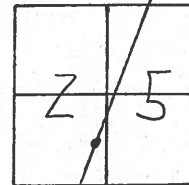
TYPE MONUMENT P.K. + WASHER

ON SURFACE - ~~BELOW~~ SURFACE

LEFT-~~☉~~ PAV'T. - ~~RIGHT~~ 8.9' LT ☉

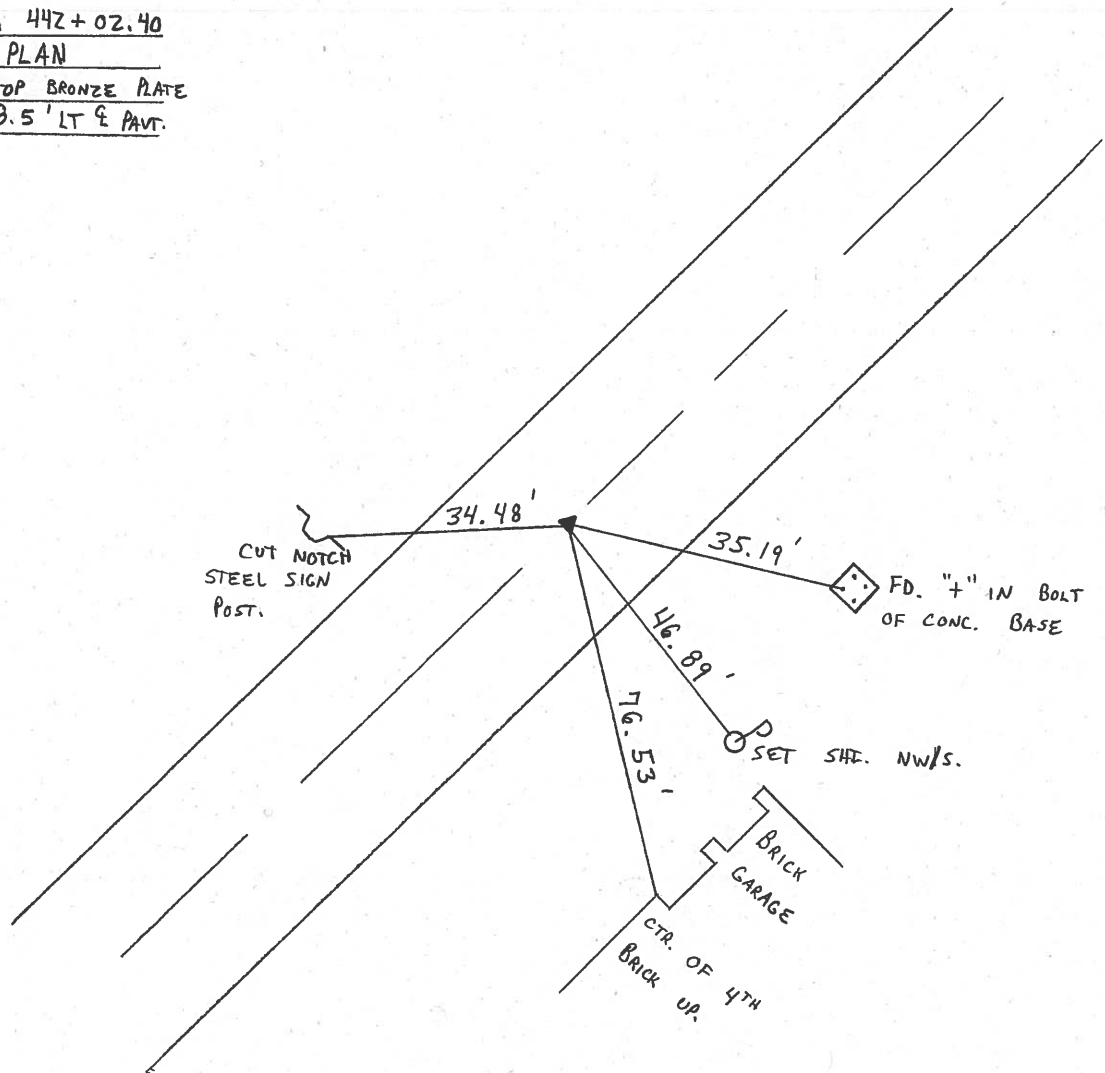
4.1' TO LT EDGE PAVEMENT

S.L.M. 12 + 925.31



RESET P.K. WASHER  
10/17/97  
M.R.C

RECORD: P.I. STA 442+02.40  
Δ = 08° 49' RT. - PLAN  
SET P.K. + WASHER ATOP BRONZE PLATE  
5" BELOW SURFACE, 8.5' LT ☉ PAVT.



County Seneca S.R. 53

Township Hopewell

Section 25

T2N, R1E

Personnel Cronin

Rippk

Geyman

Mosser

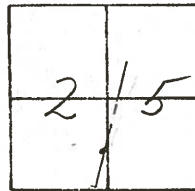
Barbour

#33

Date 8/12/82

Weather sunny - windy

Temp. 72°



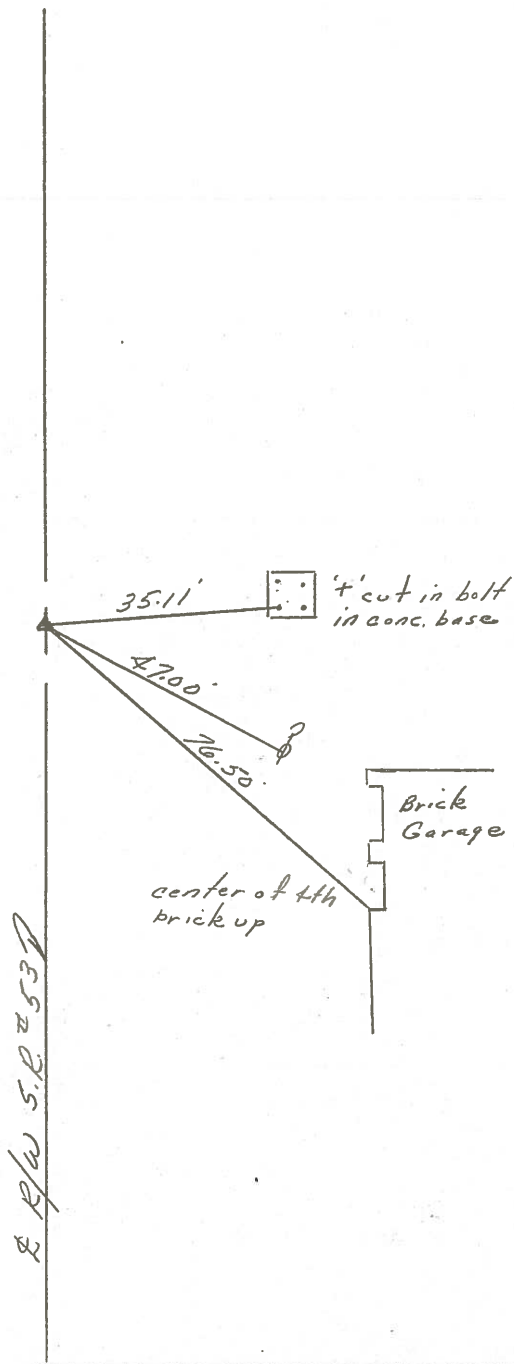
$\Delta = 08^{\circ}49'$  Pt. - Plan

P.I.

442+02.40

set P.K. & washer atop bronze plate (5" below surface)

8.5' ± Lt. & pavement

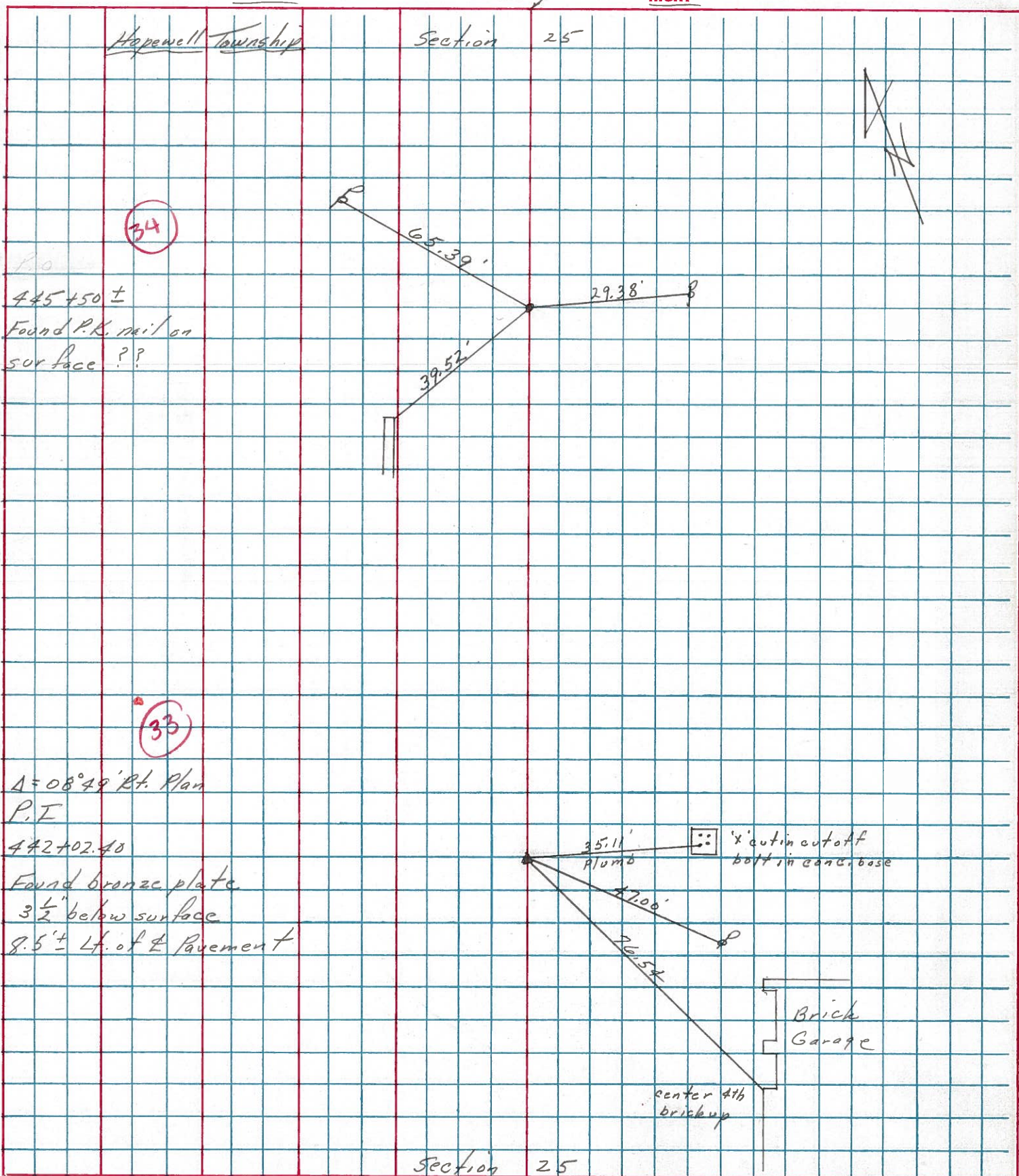


E R/W S.R. 53

PERSONNEL	TITLE	PERSONNEL	TITLE
Cronin		Schneider	
Lippke		Mosser	
Geyman		Barbour	

COUNTY Seneca DATE 1/6/76  
 S. R. # 53 WEATHER sunny - cold  
 Field Bk. # 103  
 SEC. I.C.H. #266 A-1 TEMP. 29°

DESCRIPTION Ties for Control Points JOB NO. \_\_\_\_\_



PERSONNEL TITLE PERSONNEL TITLE

Schneider  
Mosser  
Barbour  
Potts

COUNTY Seneca DATE 9-10-69

S. R. 53 WEATHER Fair

SEC. U.S. 229 to Old Corp. TEMP. 65°

DESCRIPTION Ties for Control Points

LEFT CENTER LINE RIGHT JOB NO.

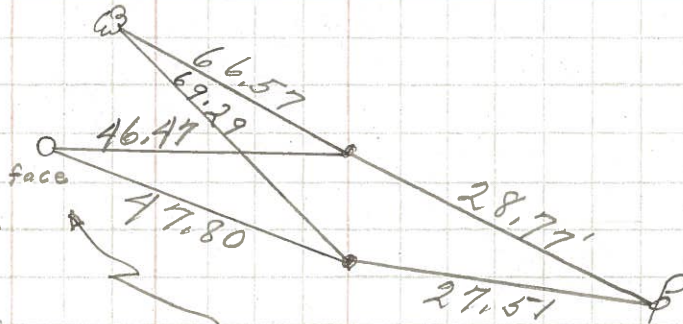
Hinge Nail

Brass Mon. 2" down  
P.K. Nail on top

Ella St. East

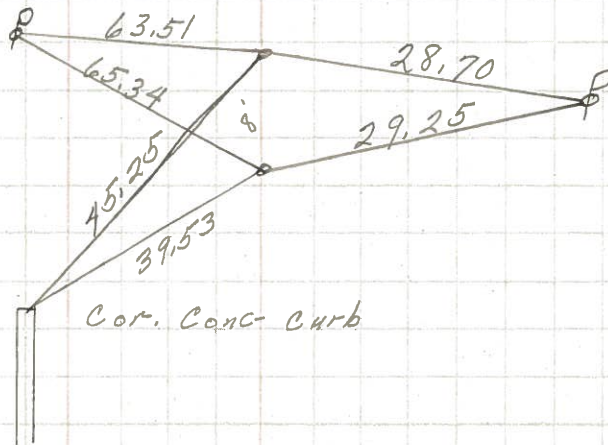
Water Meter M.H.

8356



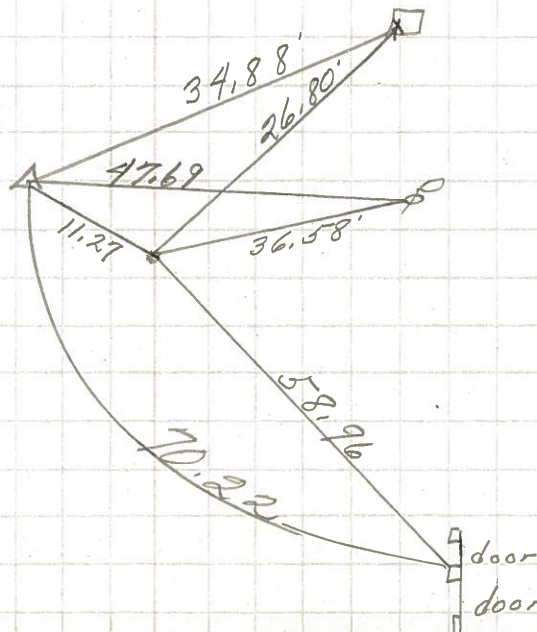
2 - P.K. Nails  
425 + 91.4

8355



2 - P.K. Nails  
422 + 46 S.L. M.

8354



34

33