

O.D.O.T. DISTRICT 2 SURVEY OFFICE (USE ONLY)

PERSONNEL

REFERENCE NO. 34

SHEET 40 OF 47

NOTES NIESE

DATE 7/21/21

ROUTE SR 53

H.C. AUBLE

WEATHER PTLY CLOUDY

COUNTY SENECA

R.C. NIESE

TEMP. 68°

TOWNSHIP HOPEWELL

SECTION 11

DWG BY WHITAKER

PID 95778

T 2 N R 14 E

TYPE MONUMENT P.K./WASHER

ON SURFACE - ~~BELOW~~ ON

OFFSET 0.3' LT : ~~RT~~

12.7' TO RT EDGE PAVEMENT

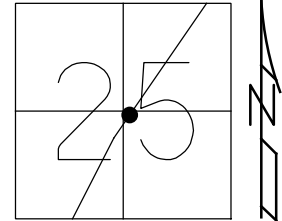
STATION: 426+20.54

HORZ.DATUM: NAD83(2011)

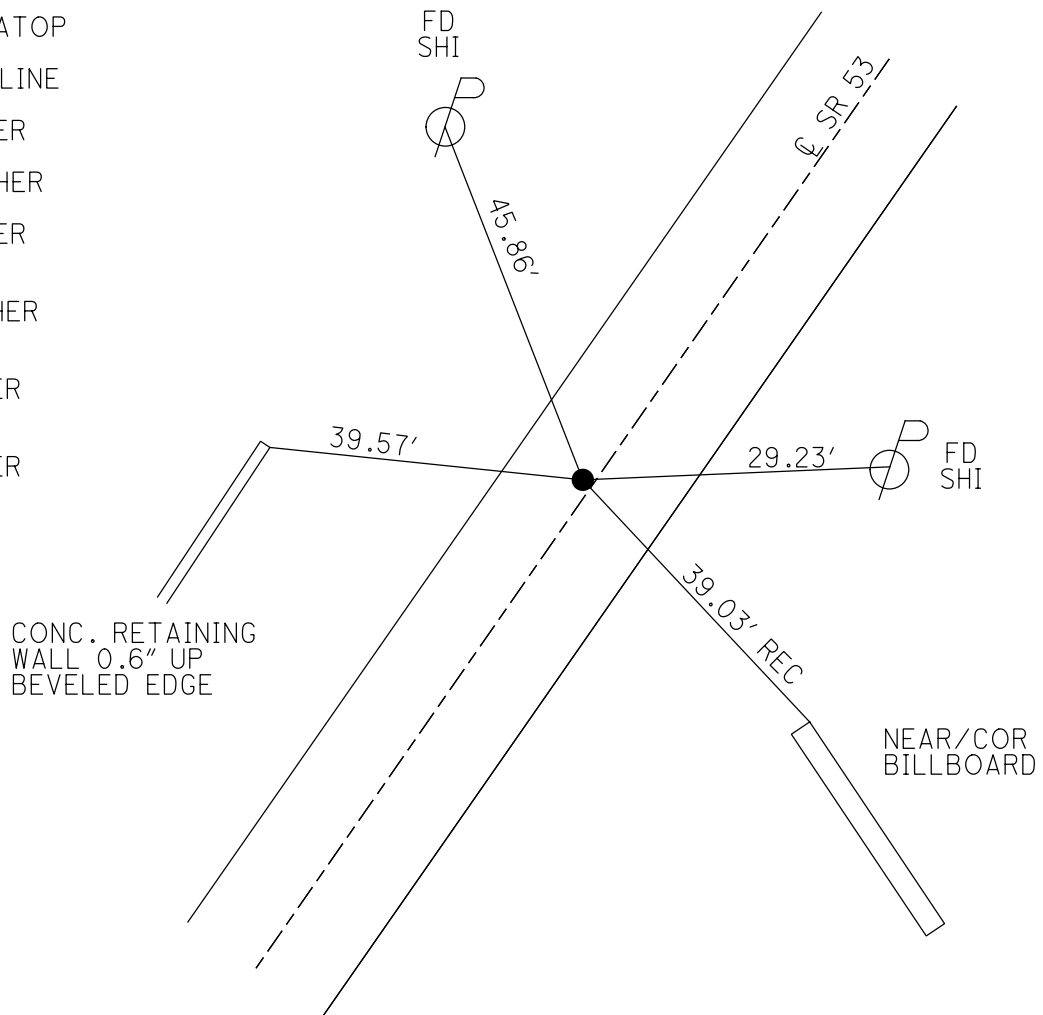
GEOID: 2012A

GRID: NORTHING: 522903.602

EASTING: 1775935.252



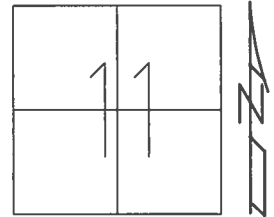
RECORD: P.O.T.  
 STA.445+50  
 P.K./WASHER ATOP  
 P.K./WASHER  
 MAY BE CORP.LINE  
 OR ON CL R/W  
 FD P.K./WASHER  
 7/2/97, MC  
 SET P.K./WASHER  
 10/17/97, MC  
 FD P.K./WASHER  
 REF34  
 4/29/16, JFO  
 SET MAG/WASHER  
 NEWREF34  
 9/7/17, JFO  
 FD MAG/WASHER  
 CKREF34  
 4/17/19, JFO  
 FD MAG/WASHER  
 REF34  
 7/21/21, DSA



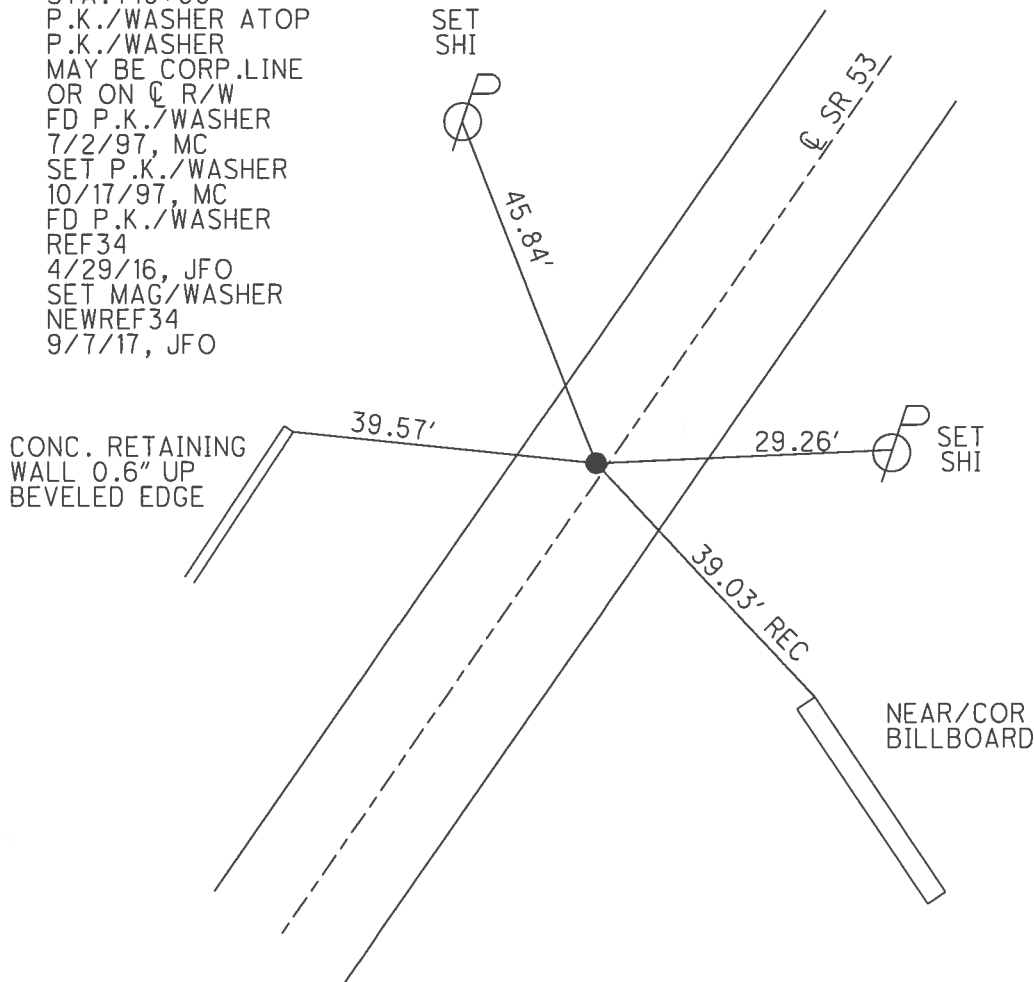
O.D.O.T. DISTRICT 2 SURVEY OFFICE (USE ONLY)

PERSONNEL \_\_\_\_\_ REFERENCE NO. 34 SHEET 40 OF 41  
 NOTES RHOADES DATE 4/20/17 ROUTE SR 53  
 H.C. O'DONNELL WEATHER WINDY COUNTY SENECA  
 R.C. RHOADES TEMP. 62° TOWNSHIP HOPEWELL  
 \_\_\_\_\_ SECTION 11  
 \_\_\_\_\_ T 2 N R 14 E

TYPE MONUMENT P.K./WASHER  
 ON SURFACE - ~~BELOW~~ ON \_\_\_\_\_  
 LEFT - ☐ PAV'T - ~~RIGHT~~ 0.3'  
12.7' TO RT EDGE PAVEMENT  
 S.L.M. 426+20.60  
 Grid: Northing: 522903.602 Easting: 1775935.252



RECORD: P.O.T.  
 STA.445+50  
 P.K./WASHER ATOP  
 P.K./WASHER  
 MAY BE CORP.LINE  
 OR ON ☐ R/W  
 FD P.K./WASHER  
 7/2/97, MC  
 SET P.K./WASHER  
 10/17/97, MC  
 FD P.K./WASHER  
 REF34  
 4/29/16, JFO  
 SET MAG/WASHER  
 NEWREF34  
 9/7/17, JFO



# O.D.O.T. DISTRICT 2 SURVEY OFFICE

PERSONNEL \_\_\_\_\_

REFERENCE NO. 34

SHEET 34 OF 34

NOTES CANTERBURY

H.C. BARNHISEL

R.C. WEAVER

DATE 7/2/97

WEATHER SUN

TEMP. +80° F

ROUTE # 53

COUNTY SENECA

TOWNSHIP HOPEWELL

SECTION 25

T. Z N. R 14 E.

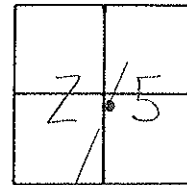
TYPE MONUMENT P.K. + WASHER

ON SURFACE - BELOW SURFACE

LEFT - 0 PAVT. - RIGHT 0.3' RT &

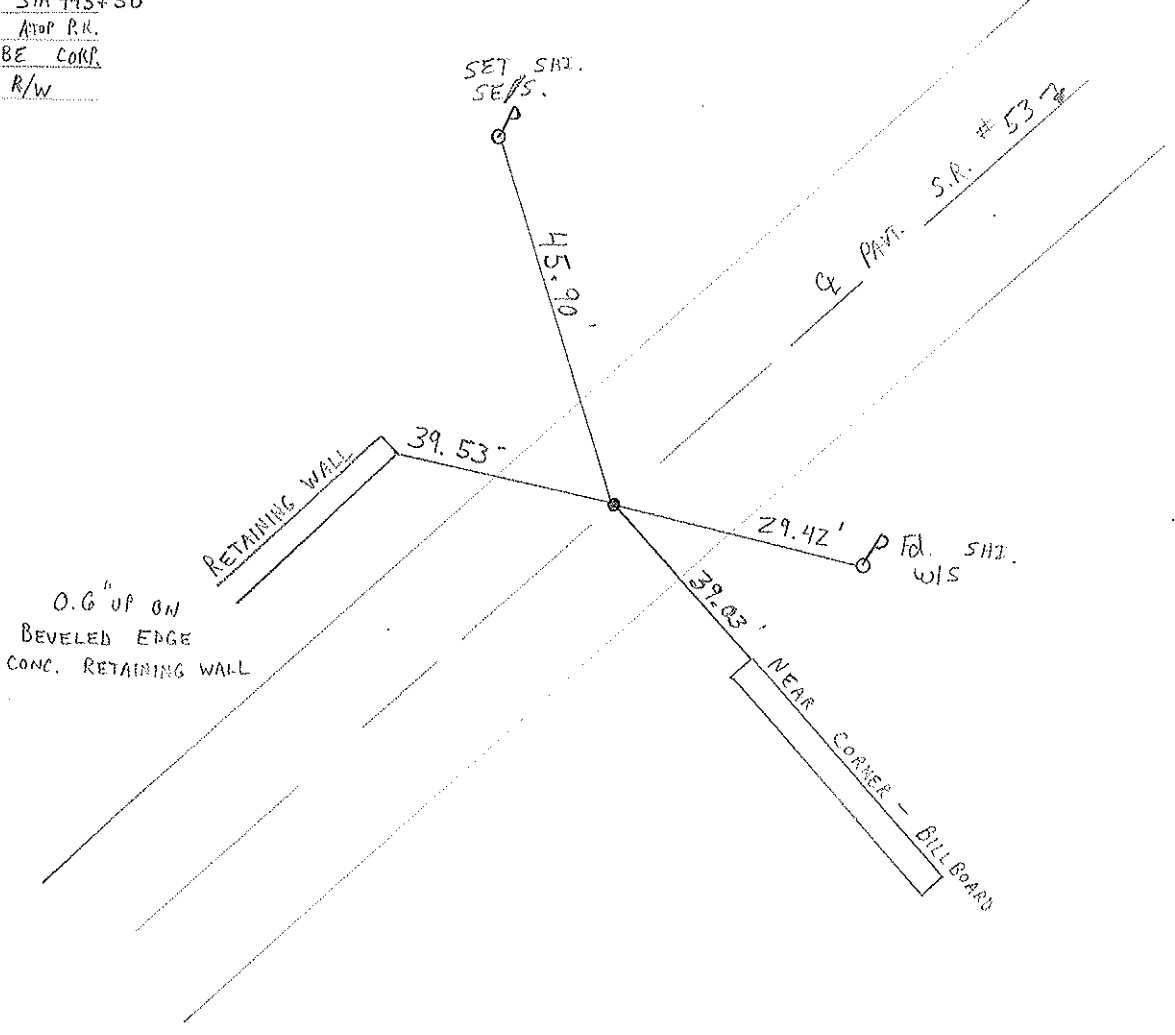
12.7 TO RT. EDGE PAVEMENT

S.L.M. 13 + 031.39



RESET P.K. + WASHER  
 10/17/97  
 M.R.C.

RECORD: P.O.T. STA 445+50  
 SET P.K. + WASHER AND P.K.  
 MAY OR MAY NOT BE CORP.  
 LINE & OR ON & R/W



18  
O.D.O.T. DISTRICT 2 SURVEY OFFICE

Sht. \_\_\_ of \_\_\_

County Seneca

Date 8/12/82

Township Hopewell

Weather sunny-windy

Section 25

Temp. 72°

T2N, R14E

Personnel Cronin

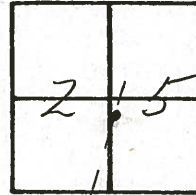
Ripple

Geyman

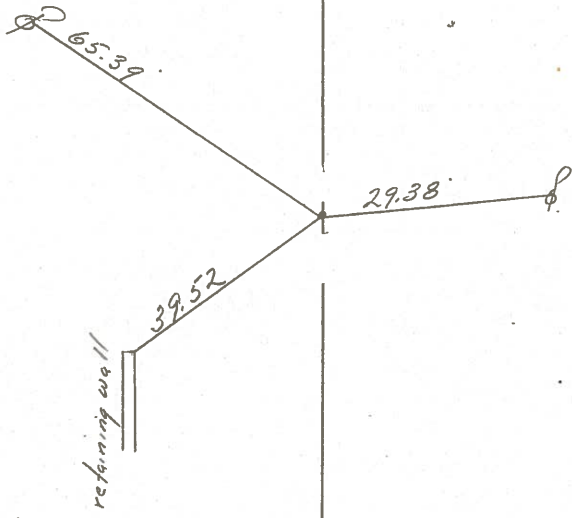
Hosser

Barbour

#34



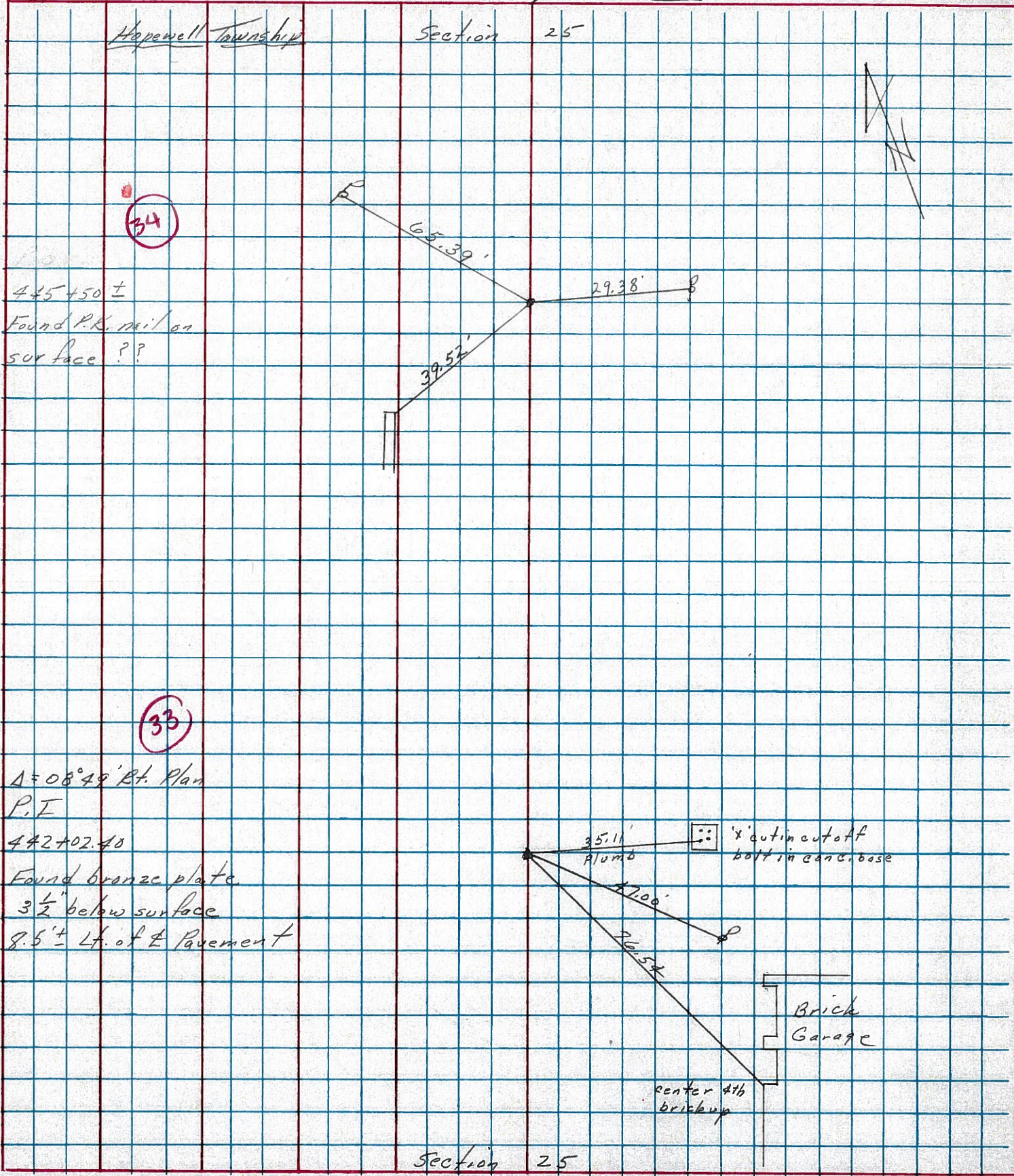
445+50±  
set P.K. & washer at top P.K.  
May or may not be corporation  
line & or on & R/W



PERSONNEL	TITLE	PERSONNEL	TITLE
Cronin		Schneider	
Gipke		Messer	
Geyman		Barbour	

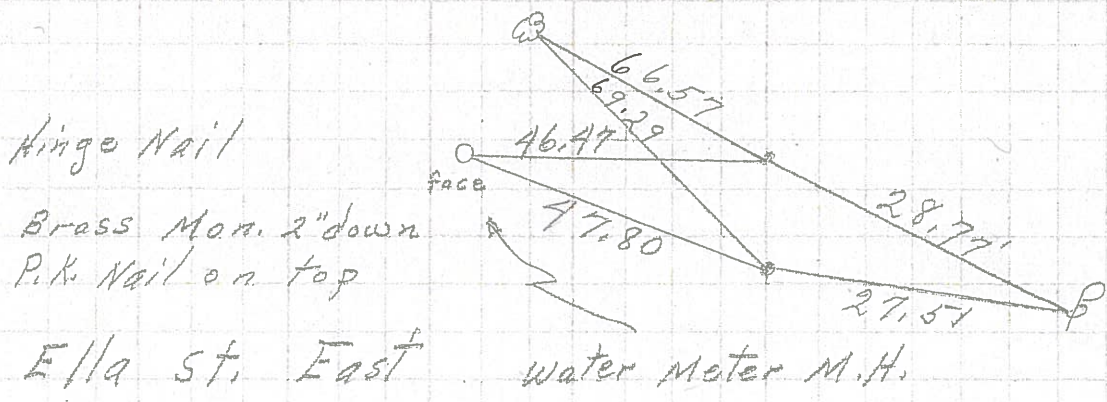
COUNTY Seneca DATE 11/6/76  
 S. R. # 53 WEATHER sunny - cold  
 Field Bk. # 103  
 SEC. I.C.H. #266 A-1 TEMP. 29°

DESCRIPTION Ties for Control Points JOB NO. \_\_\_\_\_  
 LEFT CENTER LINE RIGHT



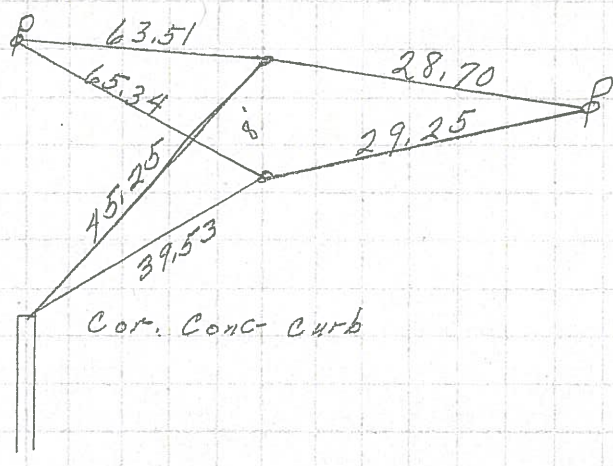
PERSONNEL	TITLE	PERSONNEL	TITLE	COUNTY	DATE
Schneider				Seneca	9-10-69
Mosser				S. R. 53	WEATHER Fair
Barbour				SEC. 11.5, 224 to Old Corp.	TEMP. 65°
Potts					

DESCRIPTION Ties for Control Points JOB NO. \_\_\_\_\_



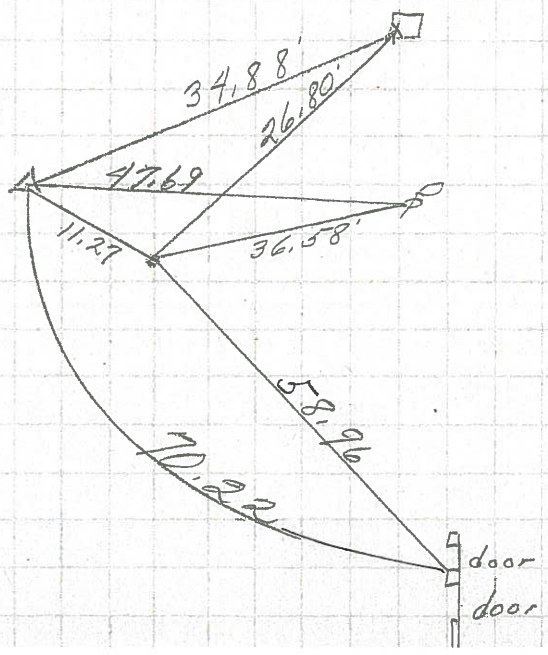
8356

2 - P.K. Nails  
 425 + 91.4



8355

2 - P.K. Nails  
 422 + 46 S.L. M.



8354

34

33