

| PERSONNEL | TITLE | PERSONNEL | TITLE | COUNTY | DATE | WEATHER |
|------------|-------|-----------|-------|-----------|--------|---------|
| E. Krabill | | | | SEYECG | 1-6-64 | |
| Kawalecki | | | | S. R. 5-3 | | |
| Gayman | | | | | | |

| DESCRIPTION | LEFT | CENTER LINE | RIGHT | SEC. | TEMP. | JOB NO. |
|-------------------------------|------|-------------|-------|------|-------|---------|
| Tiffin North to Sandusky Line | | | | | | |

Sta 536+448

50
51 A

Intersection of SR. 53 and Washington St
Man box with stone

Sta 546+89.70

51
51 B

Intersection of Second Ave and SR. 53
Man box with stone

Sta 568+39.44

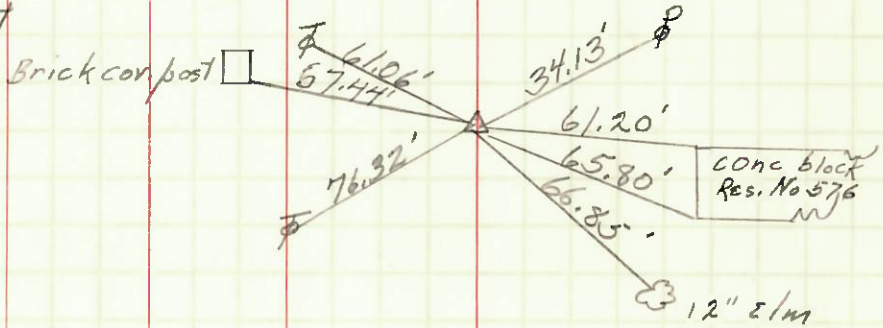
$\Delta = 0^{\circ} - 03' - 00''$ LT

P.K. Nail

Sta. 0+00
old Plan Sta.

52

Brick corner post



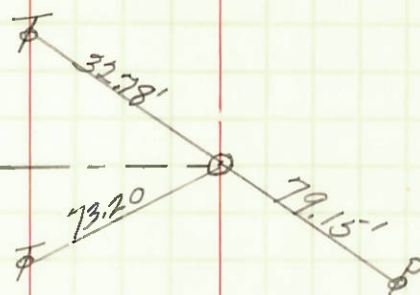
Sta 574+63.12

$\Delta = 0^{\circ} - 00' - 00''$

P.K. nail

53

Remus St



Sta 581+65.50

$\Delta = 0^{\circ} - 00' - 00''$

P.K. nail

54

