

O.D.O.T. DISTRICT 2 SURVEY OFFICE (USE ONLY)

PERSONNEL

REFERENCE NO. 54

SHEET 5 OF 5

NOTES MICKALAK

DATE 7/30/80

ROUTE SR 53

H.C. STONE

WEATHER WARM

COUNTY SENECA

R.C. CURTIS

TEMP. 76°

TOWNSHIP CLINTON

NEUSER

SECTION 18

DWG BY RHOADES PID \_\_\_\_\_

T 2 N R 15 E

TYPE MONUMENT P.K.NAIL

ON SURFACE - ~~BELOW~~ ON

OFFSET 0 PAVEMENT ON LT : RT

- TO - EDGE PAVEMENT

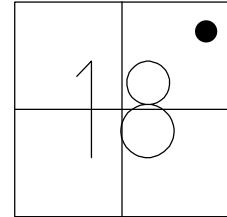
STATION: 581+65.50

HORZ.DATUM: \_\_\_\_\_

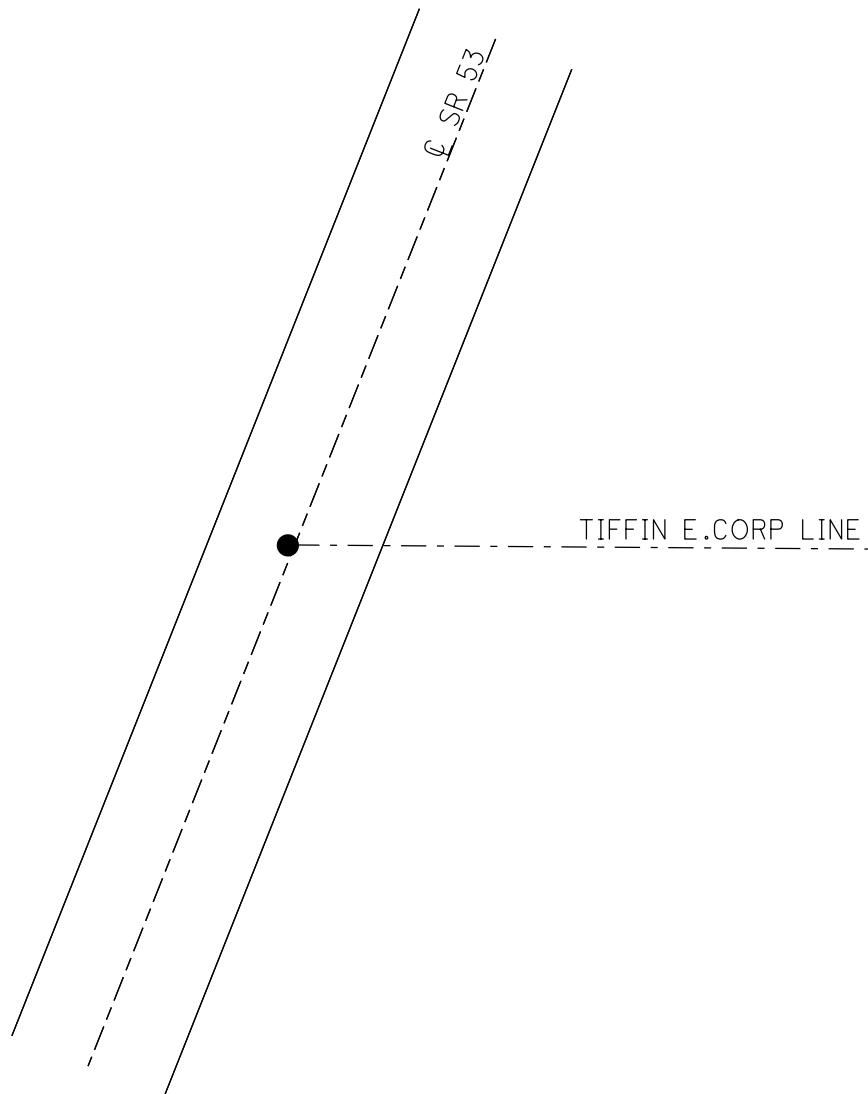
GEOID: \_\_\_\_\_

GRID: NORTHING: \_\_\_\_\_

EASTING: \_\_\_\_\_



RECORD: P.O.T.  
STA. 581+65.50  
FD P.K.NAIL  
1/6/64  
7/30/80, IRS



Q.D.O.T. DISTRICT 2 SURVEY OFFICE

Sht. \_\_\_ of \_\_\_

County Seneca S.R. 53

Date 30 July 80

Township Clinton

Weather Windy

Section Tiffin City Limits

Temp. 77°

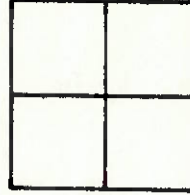
T    N, R    E

Personnel L. Stone

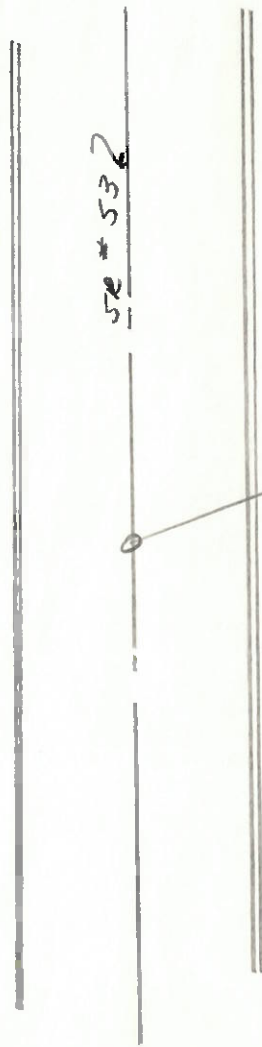
R. Michalak

D. Curtis

P. Newser



Ref. No. 54



Tiffin E. Loop - 4 mi

Sta. 581+65.50 = P.O.T.

PERSONNEL	TITLE	PERSONNEL	TITLE	COUNTY	DATE	WEATHER
E. Krabill				SEYECG	1-6-64	
Kawalecki				S. R. 5-3		
Gayman						

DESCRIPTION	LEFT	CENTER LINE	RIGHT	SEC.	TEMP.	JOB NO.
Tiffin North to Sandusky Line						

Sta 536+448

50  
51 A

Intersection of SR. 53 and Washington St  
Man box with stone

Sta 546+89.70

51  
51 B

Intersection of Second Ave and SR. 53  
Man box with stone

Sta 568+39.44

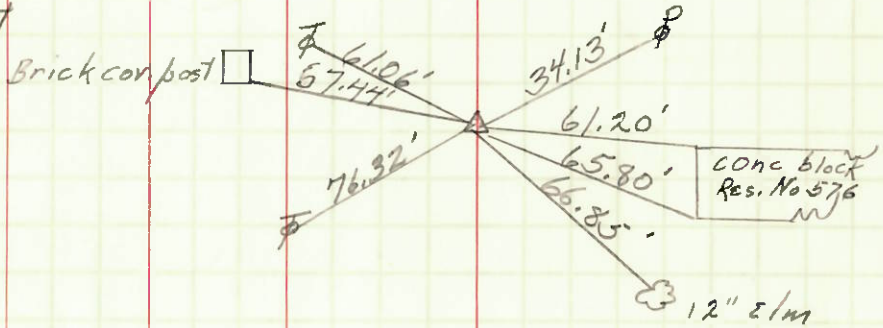
$\Delta = 0^{\circ} - 03' - 00''$  LT

P.K. Nail

Sta. 0+00  
old Plan Sta.

52

Brick corner post



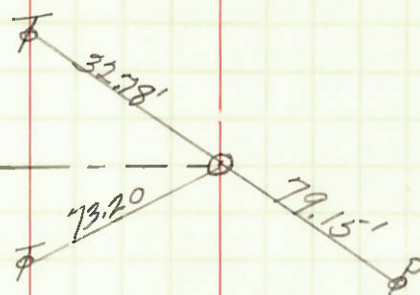
53

Sta 574+63.12

$\Delta = 0^{\circ} - 00' - 00''$

P.K. nail

Remus St



54

Sta 581+65.50

$\Delta = 0^{\circ} - 00' - 00''$

P.K. nail

