

O.D.O.T. DISTRICT 2 SURVEY OFFICE (USE ONLY)

PERSONNEL \_\_\_\_\_

REFERENCE NO. 55

SHEET 1 OF 27

NOTES CRONIN

DATE 6/30/88

ROUTE SR 53

H.C. BARBOUR

WEATHER SUNNY

COUNTY SENECA

R.C. GEYMAN

TEMP. 60°

TOWNSHIP CLINTON

SECTION 18

DWG BY NIESE

PID \_\_\_\_\_

T 2 N R 15 E

TYPE MONUMENT P.K.NAIL

ON SURFACE - ~~BELOW~~ ON

OFFSET ☉ PAVEMENT ON LT : RT

- TO - EDGE PAVEMENT

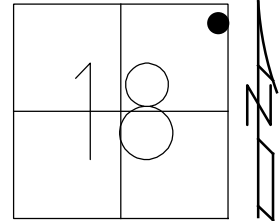
STATION: 585+25.88

HORZ.DATUM: \_\_\_\_\_

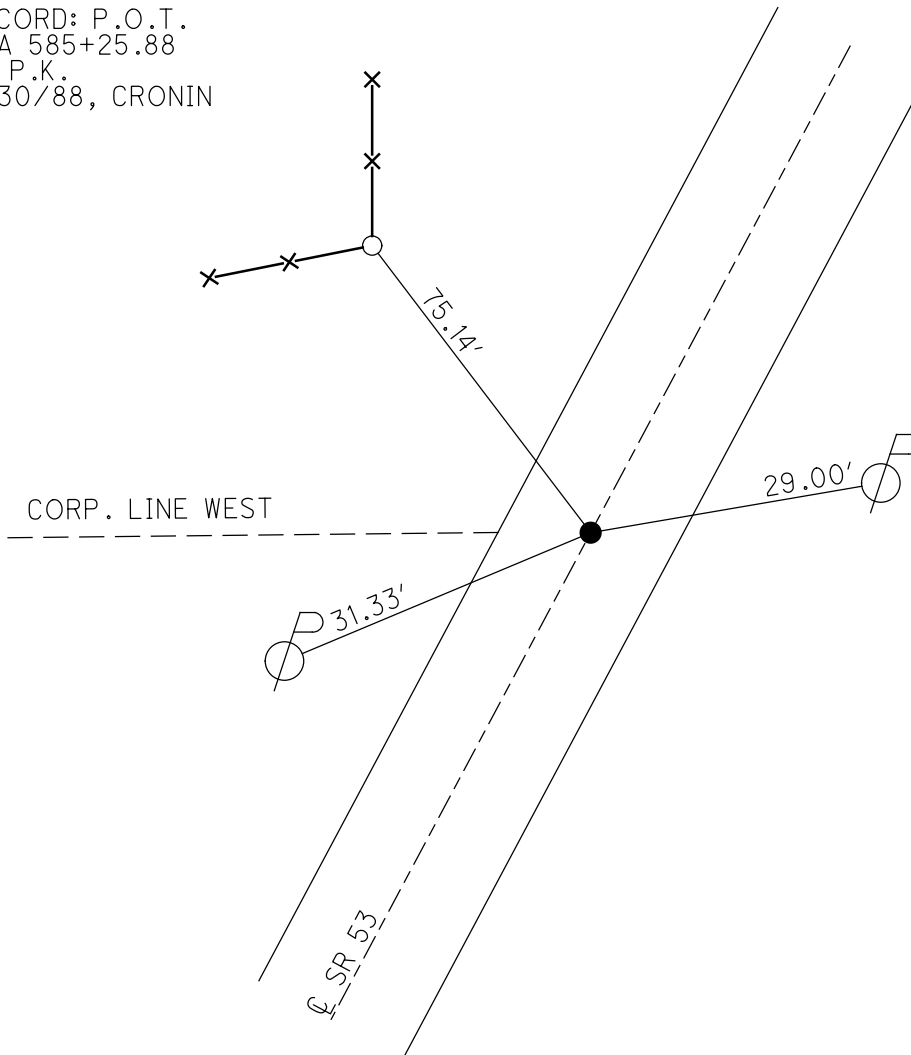
GEOID: \_\_\_\_\_

GRID: NORTHING: \_\_\_\_\_

EASTING: \_\_\_\_\_



RECORD: P.O.T.  
STA 585+25.88  
FD P.K.  
6/30/88, CRONIN



O.D.O.T. DISTRICT 2 SURVEY OFFICE

PERSONNEL

NOTES Craig  
H.C. Barbour  
R.C. Geyman

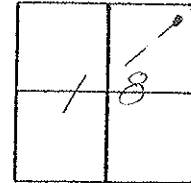
REFERENCE NO. 55

DRAWN 2/18/87  
DATE 6/30/88  
WEATHER sunny  
TEMP. 60°

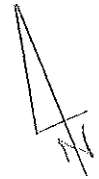
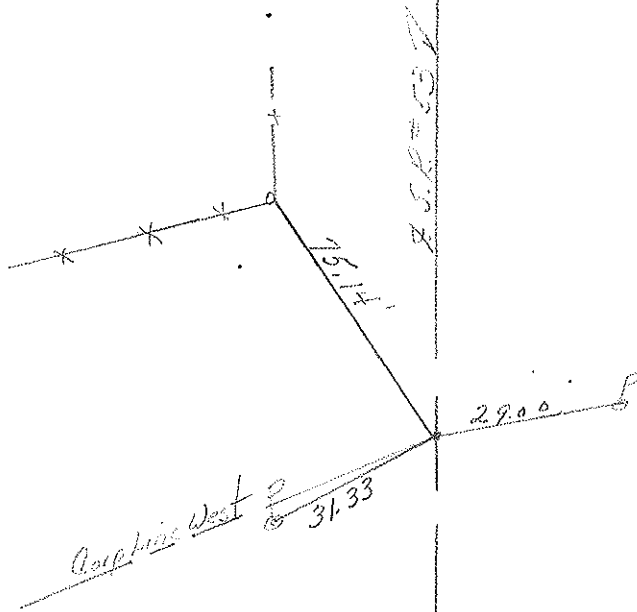
SHEET 1 OF 21

ROUTE #53  
COUNTY Seneca  
TOWNSHIP Clinton  
SECTION 18  
T. 2 N R. 15 E

TYPE MONUMENT P.K.  
ON SURFACE - BELOW \_\_\_\_\_  
LEFT - CL PAV'T. - RIGHT L. Pav't.  
\_\_\_\_\_ TO \_\_\_\_\_ EDGE PAVEMENT  
S.L.M. \_\_\_\_\_



P.O.T.  
585+25.88



County Snacco S.R. 53

Date 30 July 80

Township Clinton

Weather Warm

Section Tiffin City Limits

Temp. 77°

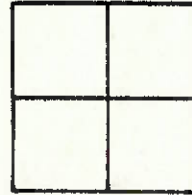
T    N, R    E

Personnel I. Stone

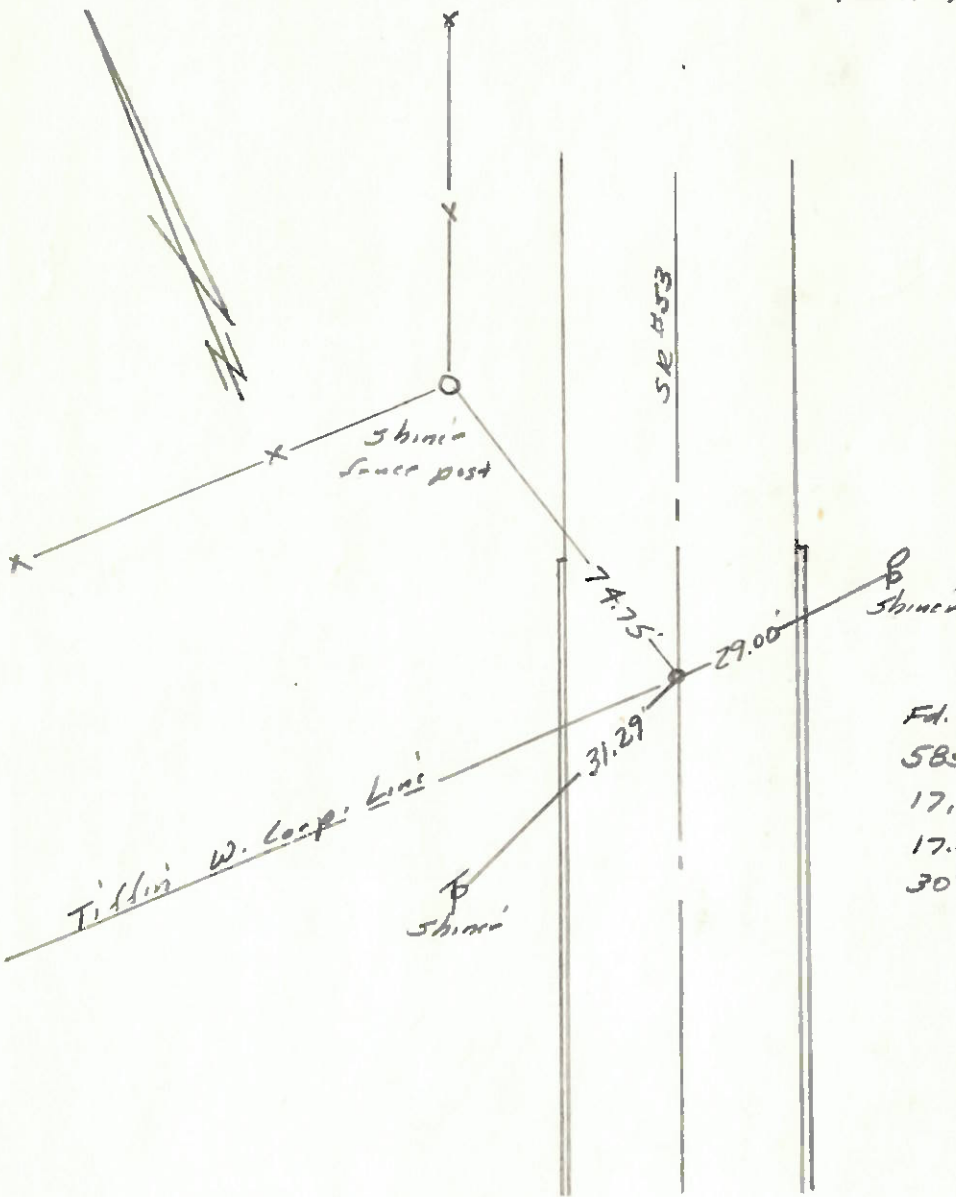
R. Michalak

D. Curtis

P. Neuser



Ref. No. 55



Fd. NK. Nail to surface  
 5854 25.88 = P.O.T.  
 17.0' to E. edge post  
 17.0' to W. edge post  
 30' ± N. to end curb

SET P.K.  
 8-2680  
 SMITH

PERSONNEL	TITLE	PERSONNEL	TITLE	COUNTY	DATE
Knabill				Seneca	
Kawaleski				S. R. 53	WEATHER
Geiman				SEC.	TEMP.

DESCRIPTION Tiffin North to Sandusky line JOB NO. \_\_\_\_\_

